

GENERAL SHEETS

No.	Sheet Number	Sheet Title
1	001 G	GENERAL NOTES AND SHEET INDEX
2	002 G	PLAN VIEW OVERALL PROJECT VICINITY MAP

TRANSPORTATION AREA (TA SERIES MAPS)

No.	Sheet Number	Sheet Title
3	TA- 300 G	PLAN VIEW TRANSPORTATION AREA INDEX MAP
4	TA- 301 A	PLAN VIEW ACCESS ROAD WETLANDS MAP
5	TA- 301 B	PLAN VIEW ACCESS ROAD ENGINEERING MAP
6	TA- 301 C	PLAN VIEW ACCESS ROAD ENGINEERING MAP - AERIAL
7	TA- 301 D1	JUNGJUK PORT LAYOUT AND DETAILS
8	TA- 302 D2	JUNGJUK TAIL WALL SECTIONS
9	TA- 303 D3	JUNGJUK PORT SECTIONS
10	TA- 301 D4	MATERIAL SITE 16 LAYOUT AND DETAILS
11	TA- 302 A	PLAN VIEW ACCESS ROAD WETLANDS MAP
12	TA- 302 B	PLAN VIEW ACCESS ROAD ENGINEERING MAP
13	TA- 302 C	PLAN VIEW ACCESS ROAD ENGINEERING MAP - AERIAL
14	TA- 302 D	MATERIAL SITE 13 LAYOUT AND DETAILS
15	TA- 303 A	PLAN VIEW ACCESS ROAD WETLANDS MAP
16	TA- 303 B	PLAN VIEW ACCESS ROAD ENGINEERING MAP
17	TA- 303 C	PLAN VIEW ACCESS ROAD ENGINEERING MAP - AERIAL
18	TA- 303 D	MATERIAL SITE 12 LAYOUT AND DETAILS
19	TA- 304 A	PLAN VIEW ACCESS ROAD WETLANDS MAP
20	TA- 304 B	PLAN VIEW ACCESS ROAD ENGINEERING MAP
21	TA- 304 C	PLAN VIEW ACCESS ROAD ENGINEERING MAP - AERIAL
22	TA- 304 D	MATERIAL SITE 10 LAYOUT AND DETAILS
23	TA- 305 A	PLAN VIEW ACCESS ROAD WETLANDS MAP
24	TA- 305 B	PLAN VIEW ACCESS ROAD ENGINEERING MAP
25	TA- 305 C	PLAN VIEW ACCESS ROAD ENGINEERING MAP - AERIAL
26	TA- 305 D	MATERIAL SITE 08 and SITE 09 LAYOUT AND DETAILS
27	TA- 306 A	PLAN VIEW ACCESS ROAD WETLANDS MAP
28	TA- 306 B	PLAN VIEW ACCESS ROAD ENGINEERING MAP
29	TA- 306 C	PLAN VIEW ACCESS ROAD ENGINEERING MAP - AERIAL
30	TA- 306 D	MATERIAL SITE 06 and 07 LAYOUT AND DETAILS
31	TA- 307 A	PLAN VIEW ACCESS ROAD WETLANDS MAP
32	TA- 307 B	PLAN VIEW ACCESS ROAD ENGINEERING MAP
33	TA- 307 C	PLAN VIEW ACCESS ROAD ENGINEERING MAP - AERIAL
34	TA- 307 D	MATERIAL SITE 04 AND 05 LAYOUT AND DETAILS
35	TA- 308 A	PLAN VIEW ACCESS ROAD WETLANDS MAP
36	TA- 308 B	PLAN VIEW ACCESS ROAD ENGINEERING MAP
37	TA- 308 C	PLAN VIEW ACCESS ROAD ENGINEERING MAP - AERIAL
38	TA- 308 D1	MATERIAL SITE 03 LAYOUT AND DETAILS
39	TA- 308 D2	JUNGJUK ROAD HILLCUT
40	TA- 309 A	PLAN VIEW ACCESS ROAD WETLANDS MAP
41	TA- 309 B	PLAN VIEW ACCESS ROAD ENGINEERING MAP
42	TA- 309 C	PLAN VIEW ACCESS ROAD ENGINEERING MAP - AERIAL
43	TA- 309 D	MATERIAL SITE 02 LAYOUT AND DETAILS
44	TA- 310 A	PLAN VIEW ACCESS ROAD WETLANDS MAP
45	TA- 310 B	PLAN VIEW ACCESS ROAD ENGINEERING MAP
46	TA- 310 C	PLAN VIEW ACCESS ROAD ENGINEERING MAP - AERIAL
47	TA- 310 D1	CROOKED CREEK BRIDGE PLAN AND DETAILS
48	TA- 310 D2	MATERIAL SITE 01 LAYOUT AND DETAILS
49	TA- 311 A	PLAN VIEW AIRSTRIP WETLANDS MAP
50	TA- 311 B	PLAN VIEW AIRSTRIP ENGINEERING MAP
51	TA- 311 C	PLAN VIEW AIRSTRIP ENGINEERING MAP - AERIAL
52	TA- 311 D	AIRSTRIP SECTIONS
53	TA- 312 T	JUNGJUK ACCESS ROAD TYPICAL SECTION
54	TA- 313 T	TYPICAL POWERPOLE CLEARING LIMITS
55	TA- 314 T	TYPICAL BRIDGE/STREAM CROSSING
56	TA- 316 T	TYPICAL CULVERT

MINE SITE AREA (MA SERIES MAPS)

No.	Sheet Number	Sheet Title
57	MA- 200 G	PLAN VIEW MINE AREA INDEX MAP
58	MA- 201 A	PLAN VIEW MINE AREA WETLANDS MAP
59	MA- 201 B	PLAN VIEW MINE AREA ENGINEERING MAP
60	MA- 201 C	PLAN VIEW MINE AREA ENGINEERING MAP - AERIAL
61	MA- 201 D1	LONG TERM ORE STOCKPILEDETAIL
62	MA- 201 D2	PRIMARY CRUSHER PAD DETAIL
63	MA- 201 D3	CONSTRUCTION LAYDOWN AREA 6 DETAIL
64	MA- 201 D4	TERRACE BORROW SITE 3 - NORTH TSF OVERBURDEN STOCKPILE
65	MA- 201 D5	MINE FLEET ASSEMBLY AREA DETAIL
66	MA- 202 A	PLAN VIEW MINE AREA WETLANDS MAP
67	MA- 202 B	PLAN VIEW MINE AREA ENGINEERING MAP
68	MA- 202 C	PLAN VIEW MINE AREA ENGINEERING MAP - AERIAL
69	MA- 202 D1	ULTIMATE PIT DETAIL
70	MA- 202 D2	NORTH OVERBURDEN STOCKPILE 2028 DETAIL
71	MA- 202 D3	ULTIMATE PIT - SAFETY BERM DETAIL
72	MA- 203 A	PLAN VIEW MINE AREA WETLANDS MAP
73	MA- 203 B	PLAN VIEW MINE AREA ENGINEERING MAP

MINE SITE AREA (MA SERIES MAPS)

No.	Sheet Number	Sheet Title
74	MA- 203 C	PLAN VIEW MINE AREA ENGINEERING MAP - AERIAL
75	MA- 203 D1	FSA MATERIAL SITE - SNOW GULCH DETAIL
76	MA- 203 D2	SNOW GULCH WATER DAM AND FRESHWATER RESERVOIR DETAIL
77	MA- 203 D3	MAGAZINE BOOSTER AREA PAD DETAIL
78	MA- 203 D4	AN STORAGE PAD DETAIL
79	MA- 203 D5	EMULSION PLANT PAD DETAIL
80	MA- 204 A	PLAN VIEW MINE AREA WETLANDS MAP
81	MA- 204 B	PLAN VIEW MINE AREA ENGINEERING MAP
82	MA- 204 C	PLAN VIEW MINE AREA ENGINEERING MAP - AERIAL
83	MA- 204 D1	TERRACE BORROW SITE 4 DETAIL
84	MA- 204 D2	TERRACE BORROW SITE 5 DETAIL
85	MA- 204 D3	SOUTH OVERBURDEN STOCKPILE 2019 DETAIL
86	MA- 204 D4	POTABLE WATER WELL PADS DETAIL
87	MA- 204 D5	TAILING STORAGE FACILITY STOCKPILE 1 DETAIL
88	MA- 204 D6	TAILING STORAGE FACILITY STOCKPILE 2 DETAIL
89	MA- 204 D7	TERRACE BORROW SITE 6 DETAIL
90	MA- 204 D8	CONSTRUCTION LAYDOWN AREA 1 DETAIL
91	MA- 204 D9	CONSTRUCTION LAYDOWN AREA 2 DETAIL
92	MA- 204 D10	CONSTRUCTION LAYDOWN AREA 3 DETAIL
93	MA- 204 D11	TSF CONSTRUCTION LAYDOWN AREA 4 DETAIL
94	MA- 204 D12	ROAD TRUCKSHOP PAD DETAIL
95	MA- 204 D13	TERRACE BORROW SITE 7 DETAIL
96	MA- 204 D14	SOUTH OVERBURDEN STOCKPILE 2033 DETAIL
97	MA- 205 A	PLAN VIEW MINE AREA WETLANDS MAP
98	MA- 205 B	PLAN VIEW MINE AREA ENGINEERING MAP
99	MA- 205 C	PLAN VIEW MINE AREA ENGINEERING MAP - AERIAL
100	MA- 205 D1	TSF YEAR 25 BOUNDARY DETAIL
101	MA- 205 D2	TSF CLOSURE SPILLWAY DETAIL
102	MA- 205 D3	TSF DRAINAGE - STORMWATER DIVERSION DETAIL
103	MA- 205 D4	TSF SEEPAGE RECOVERY SYSTEM POND DETAIL
104	MA- 206 A	PLAN VIEW MINE AREA WETLANDS MAP
105	MA- 206 B	PLAN VIEW MINE AREA ENGINEERING MAP
106	MA- 206 C	PLAN VIEW MINE AREA ENGINEERING MAP - AERIAL
107	MA- 206 D1	MILLSITE/PLANT SITE PAD AND CONSTRUCTION CAMP DETAIL
108	MA- 206 D2	FUEL FARM PAD DETAIL
109	MA- 206 D3	CORE STORAGE YARD DETAIL
110	MA- 207 A	PLAN VIEW MINE AREA WETLANDS MAP
111	MA- 207 B	PLAN VIEW MINE AREA ENGINEERING MAP
112	MA- 207 C	PLAN VIEW MINE AREA ENGINEERING MAP - AERIAL
113	MA- 207 D1	AMERICAN CREEK LOWER CONTACT WATER DAM AND POND DETAIL
114	MA- 207 D2	AMERICAN FRESHWATER DIVERSION DAM AND POND DETAIL
115	MA- 207 D3	AMERICAN CREEK UPPER CONTACT WATER DAM AND POND DETAIL
116	MA- 207 D4	FSA MATERIAL SITE UPPER AMERICAN CREEK DETAIL
117	MA- 207 D5	WASTE ROCK FACILITY DETAIL
118	MA- 207 D6	WASTE ROCK FACILITY DRAINAGE SYSTEM DETAIL
119	MA- 207 D7	FSA MATERIAL SITE - UPPER AMERICAN RIDGE DETAIL
120	MA- 210 T	ROAD TYPICAL DETAIL
121	MA- 211 T	HAUL AND CONSTRUCTION ROAD TYPICAL DETAIL

PIPELINE STUDY AREA (PA SERIES MAPS)

No.	Sheet Number	Sheet Title
122	PA- 100 G	PLAN VIEW PIPELINE INDEX MAP
123	PA- 101 A	PLAN VIEW PIPELINE WETLANDS MAP
124	PA- 101 B	PLAN VIEW PIPELINE ENGINEERING MAP
125	PA- 101 C	PLAN VIEW PIPELINE ENGINEERING MAP - AERIAL
126	PA- 102 A	PLAN VIEW PIPELINE WETLANDS MAP
127	PA- 102 B	PLAN VIEW PIPELINE ENGINEERING MAP
128	PA- 102 C	PLAN VIEW PIPELINE ENGINEERING MAP - AERIAL
129	PA- 103 A	PLAN VIEW PIPELINE WETLANDS MAP
130	PA- 103 B	PLAN VIEW PIPELINE ENGINEERING MAP
131	PA- 103 C	PLAN VIEW PIPELINE ENGINEERING MAP - AERIAL
132	PA- 104 A	PLAN VIEW PIPELINE WETLANDS MAP
133	PA- 104 B	PLAN VIEW PIPELINE ENGINEERING MAP
134	PA- 104 C	PLAN VIEW PIPELINE ENGINEERING MAP - AERIAL
135	PA- 105 A	PLAN VIEW PIPELINE WETLANDS MAP
136	PA- 105 B	PLAN VIEW PIPELINE ENGINEERING MAP
137	PA- 105 C	PLAN VIEW PIPELINE ENGINEERING MAP - AERIAL
138	PA- 106 A	PLAN VIEW PIPELINE WETLANDS MAP
139	PA- 106 B	PLAN VIEW PIPELINE ENGINEERING MAP
140	PA- 106 C	PLAN VIEW PIPELINE ENGINEERING MAP - AERIAL
141	PA- 107 A	PLAN VIEW PIPELINE WETLANDS MAP
142	PA- 107 B	PLAN VIEW PIPELINE ENGINEERING MAP
143	PA- 107 C	PLAN VIEW PIPELINE ENGINEERING MAP - AERIAL
144	PA- 108 A	PLAN VIEW PIPELINE WETLANDS MAP
145	PA- 108 B	PLAN VIEW PIPELINE ENGINEERING MAP
146	PA- 108 C	PLAN VIEW PIPELINE ENGINEERING MAP - AERIAL
147	PA- 109 A	PLAN VIEW PIPELINE WETLANDS MAP
148	PA- 109 B	PLAN VIEW PIPELINE ENGINEERING MAP
149	PA- 109 C	PLAN VIEW PIPELINE ENGINEERING MAP - AERIAL
150	PA- 110 A	PLAN VIEW PIPELINE WETLANDS MAP

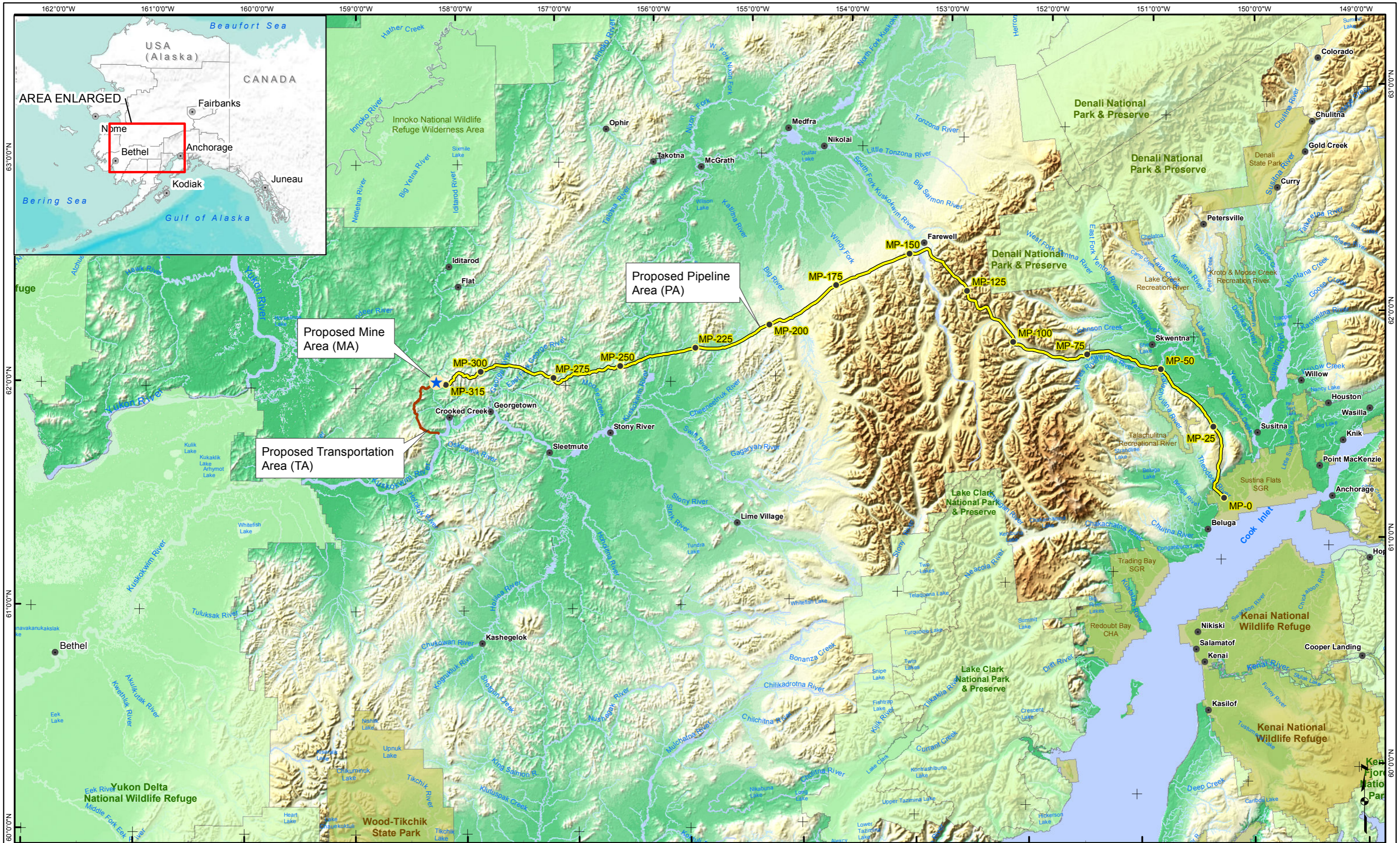
PIPELINE STUDY AREA (PA SERIES MAPS)

No.	Sheet Number	Sheet Title
151	PA- 110 B	PLAN VIEW PIPELINE ENGINEERING MAP
152	PA- 110 C	PLAN VIEW PIPELINE ENGINEERING MAP - AERIAL
153	PA- 111 A	PLAN VIEW PIPELINE WETLANDS MAP
154	PA- 111 B	PLAN VIEW PIPELINE ENGINEERING MAP
155	PA- 111 C	PLAN VIEW PIPELINE ENGINEERING MAP - AERIAL
156	PA- 112 A	PLAN VIEW PIPELINE WETLANDS MAP
157	PA- 112 B	PLAN VIEW PIPELINE ENGINEERING MAP
158	PA- 112 C	PLAN VIEW PIPELINE ENGINEERING MAP - AERIAL
159	PA- 113 A	PLAN VIEW PIPELINE WETLANDS MAP
160	PA- 113 B	PLAN VIEW PIPELINE ENGINEERING MAP
161	PA- 113 C	PLAN VIEW PIPELINE ENGINEERING MAP - AERIAL
162	PA- 130 T	TYPICAL PIPE STORAGE YARD
163	PA- 131 T	TYPICAL PIPE STOCKPILE
164	PA- 132 T	MAINLINE BLOCK VALVE ASSEMBLY
165	PA- 133 T	POWELINE
166	PA- 134 T	WINTER ROAD TYPICAL DETAIL
167	PA- 135 T	WINTER ROAD TYPICAL DETAIL
168	PA- 136 T	WINTER ROAD TURNAROUND
169	PA- 137 T	HDD ENTERY SITE EQUIPMENT LAYOUT
170	PA- 138 T	TYPICAL WATERBODY CROSSING HORIZONTAL BORE
171	PA- 139 T	TYPICAL PIG LAUNCHER 16" X 14"
172	PA- 140 T	TYPICAL PIG LAUNCHER 16" X 14"
173	PA- 141 T	SHOOFLY OR ACCESS ROAD DETAIL
174	PA- 142 T	SHOOFLY TYPICAL SECTION
175	PA- 143 T	TYPICAL FLEX-FLOAT AND ROCK FLUME BRIDGE DETAIL
176	PA- 144 T	TIMBER MAT BRIDGE AND PORTABLE WATERBODY BRIDGE DETAIL
177	PA- 145 T	TYPICAL WATERBODY CROSSING DETAIL
178	PA- 146 T	TYPICAL FLOWING WATERBODY CROSSING OPEN-CUT DETAIL
179	PA- 147 T	TYPICAL WATERBODY CROSSING OPEN-CUT
180	PA- 148 T	TYPICAL WATERBODY CROSSING DETAIL
181	PA- 149 T	TYPICAL SLOPE BREAKER WITH LONGITUDINAL CROSS SLOPES DETAIL
182	PA- 150 T	SIDE SLOPE SECTION – TWO TONED DETAIL
183	PA- 151 T	TYPICAL TRENCH BREAKER DETAIL
184	PA- 152 T	TYPICAL PIPELINE MARKER DETAIL
185	PA- 153 T	TYPICAL CATHODIC PROTECTION DETAIL
186	PA- 154 T	TYPICAL MLV FENCING DETAIL
187	PA- 155 T	RIGHT OF WAY PLAN, SUMMER GRADED R.O.W. MODE
188	PA- 156 T	RIGHT OF WAY PLAN, SUMMER GRADED R.O.W. MODE
189	PA- 157 T	CROSS SECTION, SUMMER GRADED R.O.W. MODE
190	PA- 158 T	RIGHT OF WAY PLAN, SUMMER PERMAFROST R.O.W. MODE
191	PA- 159 T	RIGHT OF WAY PLAN, SUMMER PERMAFROST R.O.W. MODE
192	PA- 160 T	CROSS SECTION, SUMMER PERMAFROST R.O.W. MODE
193	PA- 161 T	RIGHT OF WAY PLAN, SUMMER WETLANDS R.O.W. MODE
194	PA- 162 T	RIGHT OF WAY PLAN, SUMMER WETLANDS R.O.W. MODE
195	PA- 163 T	CROSS SECTION, SUMMER WETLANDS R.O.W. MODE
196	PA- 164 T	RIGHT OF WAY PLAN, WINTER GRADED R.O.W. MODE
197	PA- 165 T	RIGHT OF WAY PLAN, WINTER GRADED R.O.W. MODE
198	PA- 166 T	CROSS SECTION, WINTER GRADED R.O.W. MODE
199	PA- 167 T	RIGHT OF WAY PLAN, WINTER PERMAFROST R.O.W. MODE
200	PA- 168 T	RIGHT OF WAY PLAN, WINTER PERMAFROST R.O.W. MODE
201	PA- 169 T	CROSS SECTION, WINTER PERMAFROST R.O.W. MODE
202	PA- 170 T	RIGHT OF WAY PLAN, WINTER WETLANDS R.O.W. MODE
203	PA- 171 T	RIGHT OF WAY PLAN, WINTER WETLANDS R.O.W. MODE
204	PA- 172 T	CROSS SECTION, WINTER WETLANDS R.O.W. MODE
205	PA- 173 T	TYPICAL CAMP PLOT PLAN 100 TO 300 MAN CAMP DETAIL
206	PA- 174 T	BURIED PIPE WITH OVER-EXCAVATION IN ICE RICH SOILS

GENERAL NOTES

1. ALL PROPOSED DISTURBANCE IS INTENDED TO BE PERMANENT DISTURBANCE, UNLESS OTHERWISE SPECIFIED.
2. THE PROPOSED DISTURBANCE LIMIT OF SOME FACILITIES MAY EXTEND OUTSIDE OF THEIR DESIGNED FOOTPRINTS. WHILE THIS ADDITIONAL DISTURBANCE AREA MAY NOT BE DIRECTLY IMPACTED AS PART OF AN ACTIVITY, IT HAS BEEN ASSUMED AS PART OF THIS ANALYSIS AS A DIRECT IMPACT ASSOCIATED WITH POTENTIAL INCIDENTAL ACCESS, POTENTIAL VARIATION OR MODIFICATIONS UPON FINAL CONSTRUCTION DESIGN, CONSTRUCTION IMPLEMENTATION NEEDS, POTENTIAL STORAGE OF WASTE FROM VEGETATION CLEARING ACTIVITIES, POTENTIAL STORAGE OF SNOW FROM SNOW CLEARING ACTIVITIES, AND/OR BMP CONTROL MEASURES THAT MAY BE NEEDED.
3. SPECIFICATIONS OF FILL MATERIAL UTILIZED FOR CONSTRUCTION ACTIVITIES WILL BE DETERMINED AS ENGINEERING OF THE ASSOCIATED FACILITIES ADVANCES.
4. CUT AND FILL SLOPES ARE ASSUMED TO BE 2:1 (HORIZONTAL : VERTICAL) UNLESS OTHERWISE SPECIFIED. SLOPES MAY VARY PENDING SOIL OR ROCK TYPE ENCOUNTERED DURING EXCAVATION.
5. CROSS SECTIONS DEPICTING CUT BELOW EXISTING GROUND AND PROPOSED FILL, ASSUME EXCAVATION TO COMPETENT SOILS FOR CONSTRUCTION OF PADS OR STOCKPILES.
6. EROSION AND SEDIMENT CONTROL WILL BE PROVIDED DURING CONSTRUCTION AND OPERATIONS IN ACCORDANCE WITH THE STORMWATER POLLUTION PREVENTION PLAN.
7. RECLAMATION AND FINAL STABILIZATION OF DISTURBED AREAS WILL BE IN ACCORDANCE WITH THE RECLAMATION AND CLOSURE PLAN.

DONLIN GOLD PROJECT APPLICANT: Donlin Gold, LLC 4720 Business Park Blvd., Suite G-25 Anchorage, Alaska 99503		FIGURE NO: GENERAL NOTES AND SHEET INDEX	
		FIGURE NO. G001	FILE NO. POA-1995-120
		DATE: 10/27/2015	



Proposed Mine Area (MA)	Pipeline Area (PA)	Federal Administrative Boundary
Pipeline Milepost (MP)	Transportation Area (TA)	State Administrative Boundary
Populated Place	Water Body	

Associated Engineering Drawings

0 13.5 27 Miles

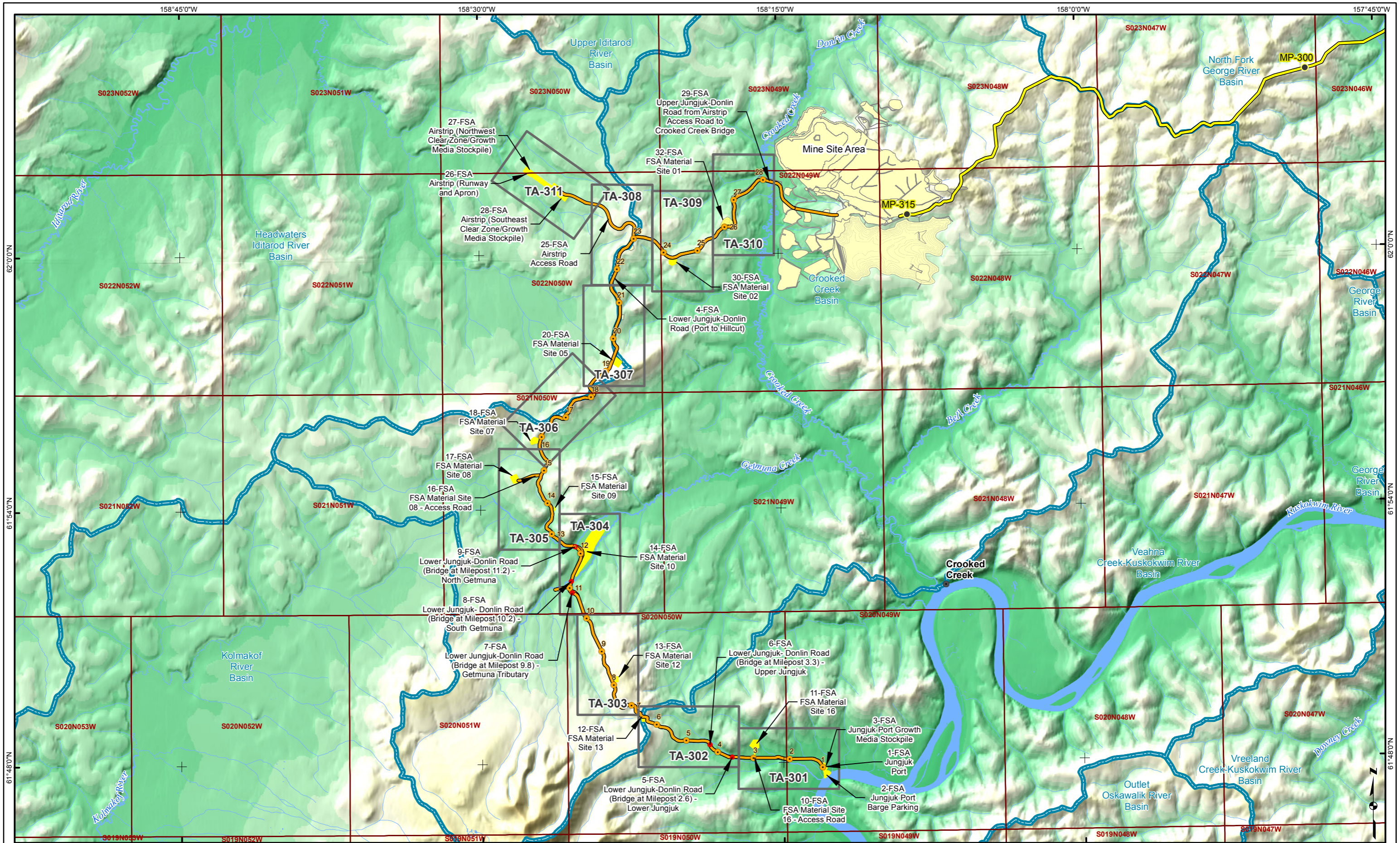
DONLIN GOLD PROJECT
 APPLICANT: Donlin Gold, LLC
 4720 Business Park Blvd., Suite G-25
 Anchorage, Alaska 99503

NAD 1983 UTM Zone 4N
 SCALE: 1 inch = 27 miles
 DATE: 10/2/2015

DRAWING TITLE: **PLAN VIEW OVERALL PROJECT VICINITY MAP**

FIGURE NO. **G002** FILE NO. **POA-1995-120**

Base map Source: USGS, NGA, NASA, CGIAR, Robinson, NCEAS, NLS, OS, NIMA, Geodatsyresen, GSA and the GIS User Community. Sources: Esri, USGS, NOAA



- Pipeline Milepost (MP)
- Road Milepost
- Populated Place
- Proposed Natural Gas Pipeline
- Proposed Jungjuk Road
- HUC 10 Basins (NRCS)
- Bridge
- Proposed Disturbance
- Proposed Mine Facility
- River/Stream
- Figure Page Index

Associated Engineering Drawings

ACAD-Donlin Jungjuk Alignment and toes.dxf (Recon)

A1-166549-80-13-006.dwg (AMEC)

0 1 2 Miles

DONLIN GOLD PROJECT

APPLICANT: Donlin Gold, LLC
4720 Business Park Blvd., Suite G-25
Anchorage, Alaska 99503

NAD 1983 UTM Zone 4N

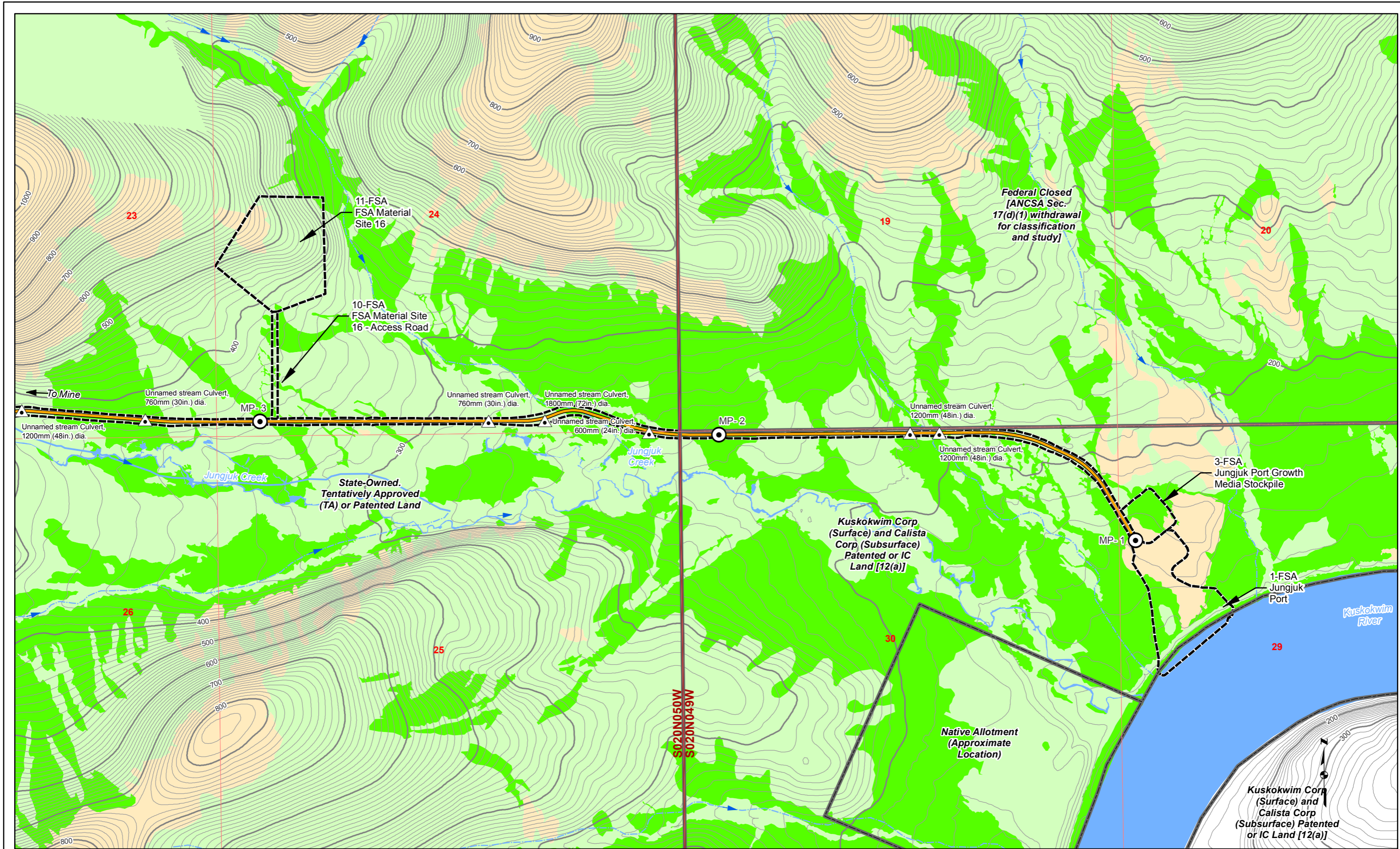
SCALE: 1 inch = 2 miles

DATE: 8/13/2015

DRAWING TITLE: **PLAN VIEW TRANSPORTATION AREA INDEX MAP**

FIGURE NO. **TA-300G**

FILE NO. **POA-1995-120**

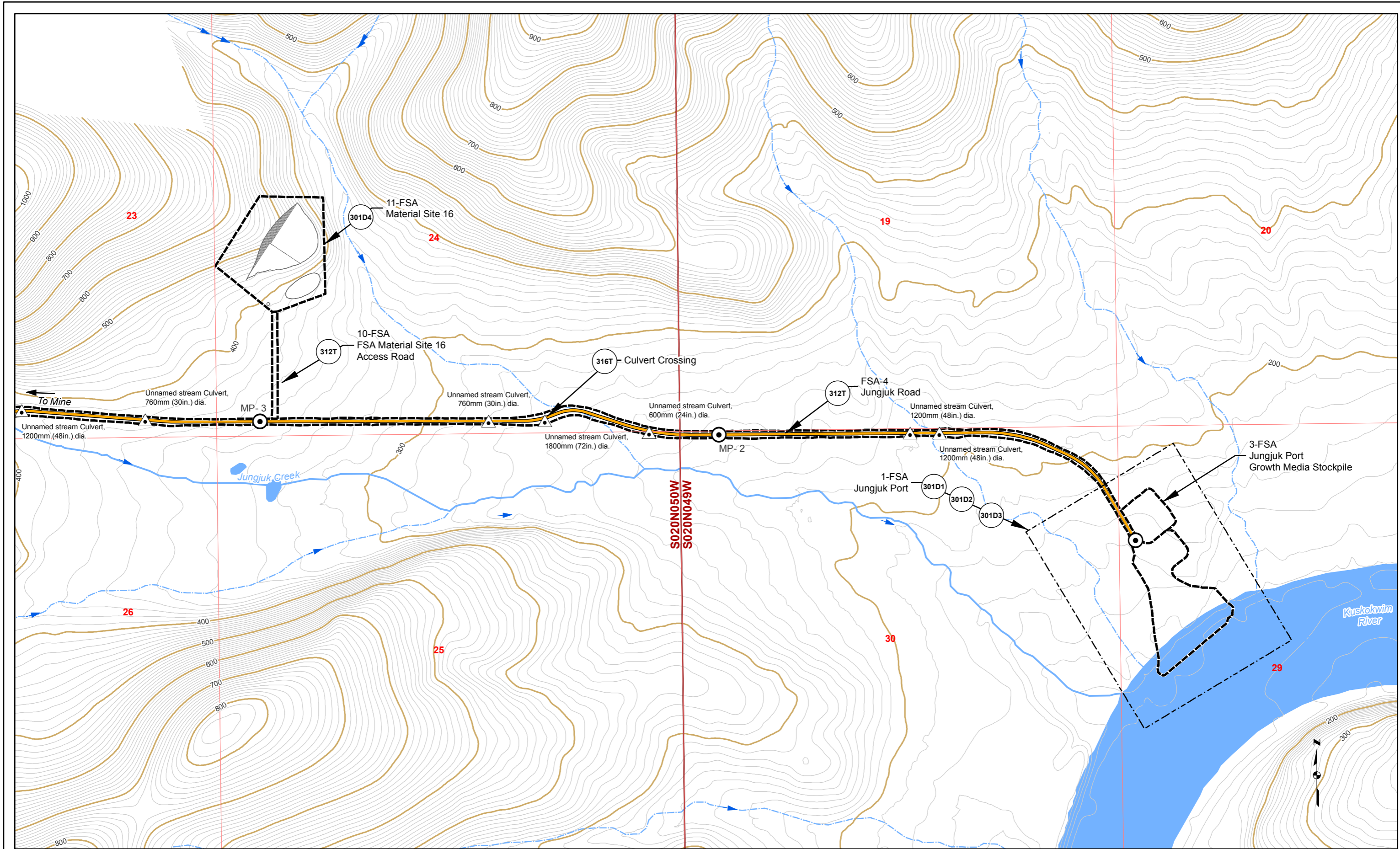


Land Status	Mosaic	Waters	Bridge	10' Contour	Proposed Jungjuk Road
Road Milepost	Upland	Wetlands	Project Disturbance Limit	100' Contour	Unnamed River/Stream
Powerline	Culvert	Stream Flow Direction	Named River/Stream		

Associated Engineering Drawings	
ACAD-Donlin Jungjuk Alignment and toes.dxf (Recon)	

DONLIN GOLD PROJECT	
APPLICANT: Donlin Gold, LLC	
4720 Business Park Blvd., Suite G-25	
Anchorage, Alaska 99503	
NAD 1983 UTM Zone 4N	
SCALE: 1 inch = 1,000 feet	DATE: 10/2/2015

DRAWING TITLE: PLAN VIEW ACCESS ROAD WETLANDS MAP	
FIGURE NO. TA-301A	FILE NO. POA-1995-120



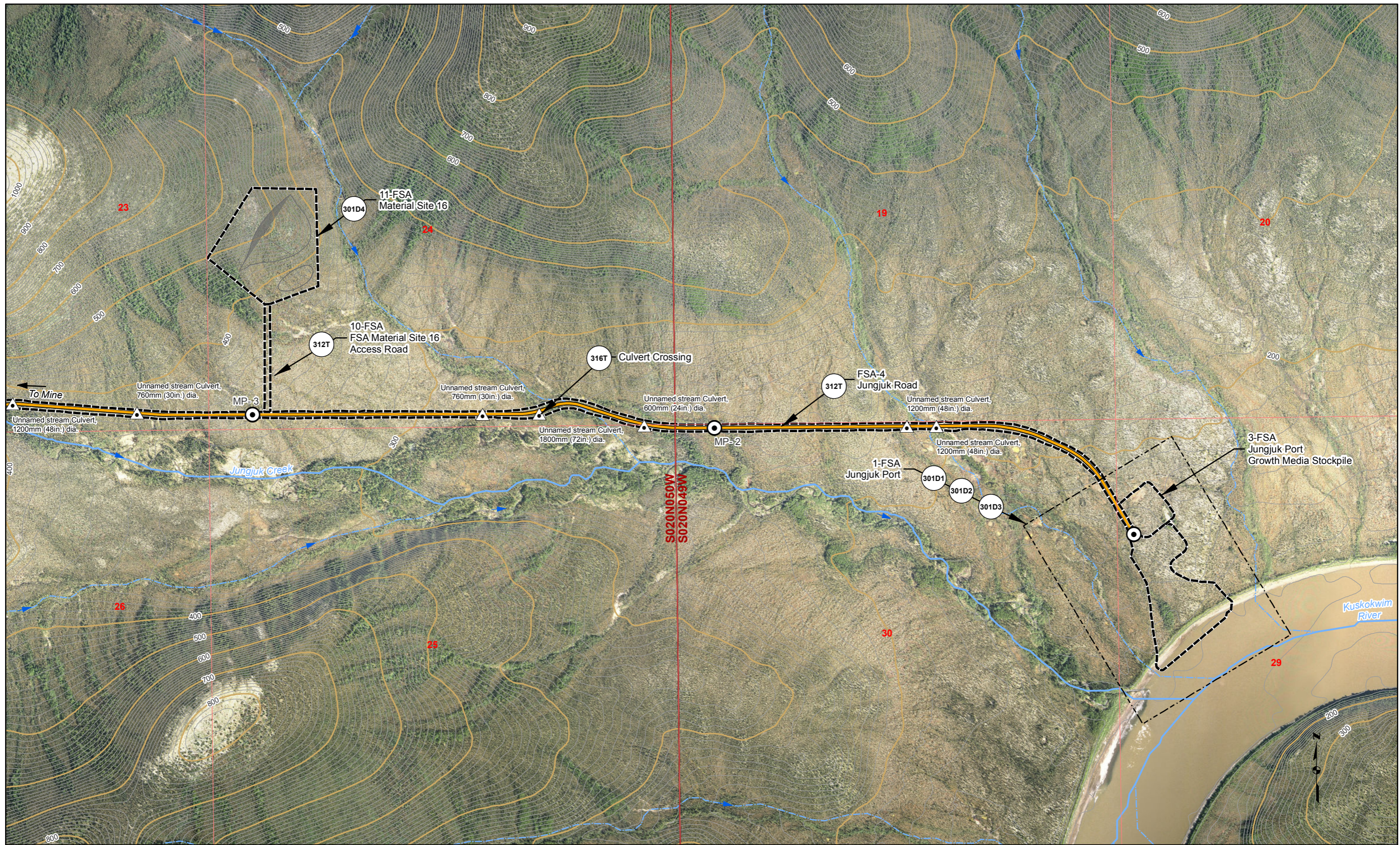
Road Milepost	Bridge	10' Contour	Cross Section	Unnamed River/Stream
Proposed Jungjuk Road	Project Disturbance Limit	100' Contour	Powerline	Named River/Stream
Culvert		Stream Flow Direction	Figure Detail Reference	

Associated Engineering Drawings	
ACAD-Donlin Jungjuk Alignment and toes.dxf (Recon); 01 Site Plan (PND)	
Donlin_Jungjuk_MaterialSites_Rev3_150202 (Recon)	

0 500 1,000 Feet

DONLIN GOLD PROJECT	
APPLICANT: Donlin Gold, LLC	
4720 Business Park Blvd., Suite G-25	
Anchorage, Alaska 99503	
NAD 1983 UTM Zone 4N	
SCALE: 1 inch = 1,000 feet	DATE: 10/27/2015

DRAWING TITLE: PLAN VIEW ACCESS ROAD ENGINEERING MAP	
FIGURE NO. TA-301B	FILE NO. POA-1995-120



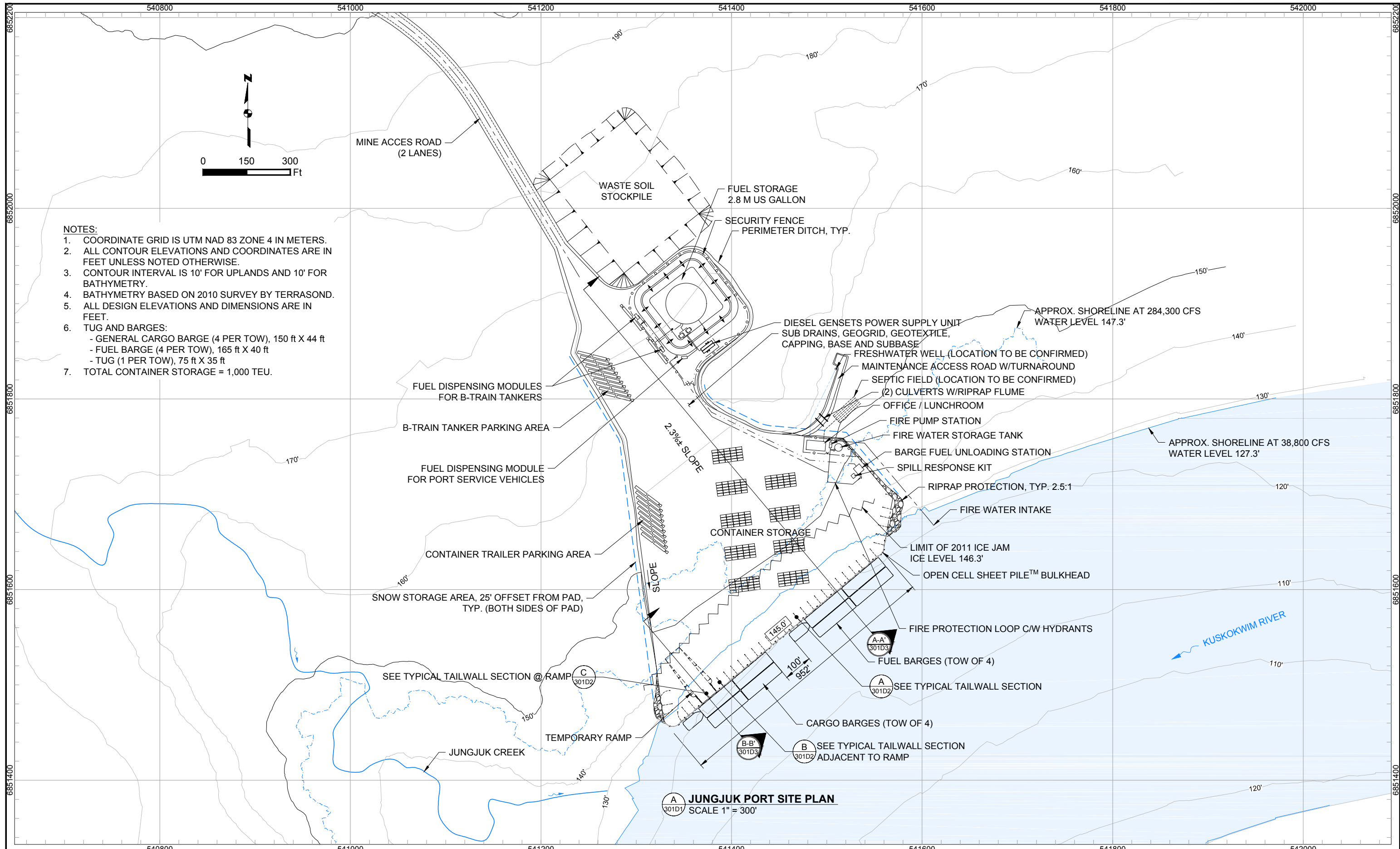
Road Milepost	Bridge	10' Contour	Cross Section	Unnamed River/Stream
Proposed Jungjuk Road	Project Disturbance Limit	100' Contour	Powerline	Named River/Stream
Culvert	Stream Flow Direction	Figure Detail Reference		

Associated Engineering Drawings	
ACAD-Donlin Jungjuk Alignment and toes.dxf (Recon); 01 Site Plan (PND)	
Donlin_Jungjuk_MaterialSites_Rev3_150202 (Recon)	

0 500 1,000 Feet

DONLIN GOLD PROJECT	
APPLICANT: Donlin Gold, LLC	
4720 Business Park Blvd., Suite G-25	
Anchorage, Alaska 99503	
NAD 1983 UTM Zone 4N	
SCALE: 1 inch = 1,000 feet	DATE: 10/27/2015

DRAWING TITLE: PLAN VIEW ACCESS ROAD ENGINEERING MAP	
FIGURE NO. TA-301C	FILE NO. POA-1995-120

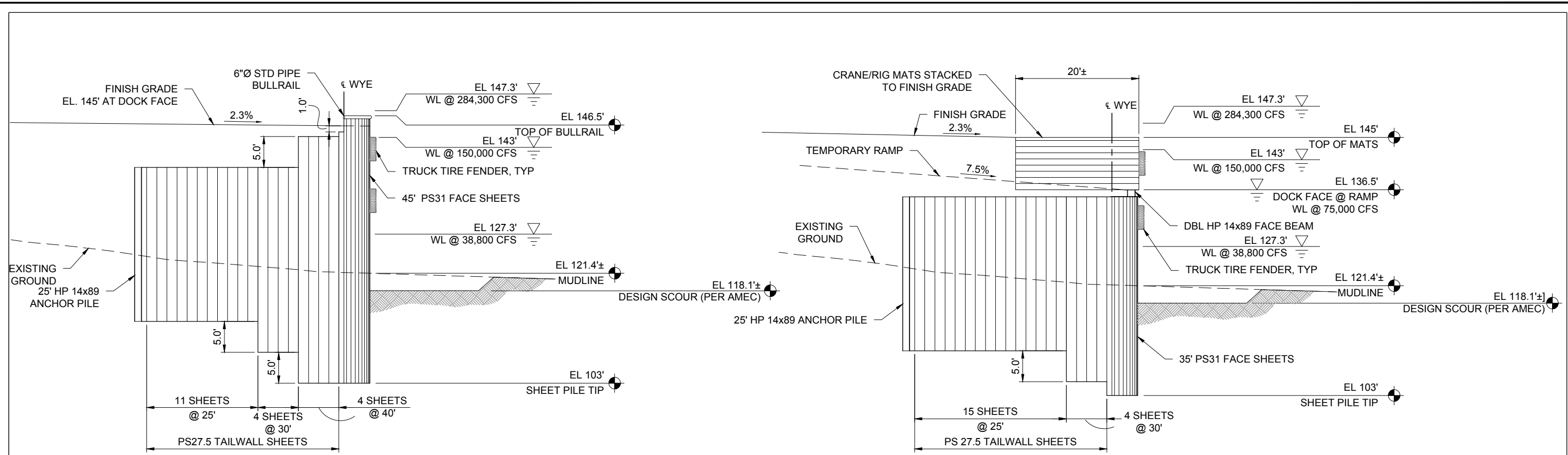


NOTES:

1. COORDINATE GRID IS UTM NAD 83 ZONE 4 IN METERS.
2. ALL CONTOUR ELEVATIONS AND COORDINATES ARE IN FEET UNLESS NOTED OTHERWISE.
3. CONTOUR INTERVAL IS 10' FOR UPLANDS AND 10' FOR BATHYMETRY.
4. BATHYMETRY BASED ON 2010 SURVEY BY TERRASOND.
5. ALL DESIGN ELEVATIONS AND DIMENSIONS ARE IN FEET.
6. TUG AND BARGES:
 - GENERAL CARGO BARGE (4 PER TOW), 150 ft X 44 ft
 - FUEL BARGE (4 PER TOW), 165 ft X 40 ft
 - TUG (1 PER TOW), 75 ft X 35 ft
7. TOTAL CONTAINER STORAGE = 1,000 TEU.

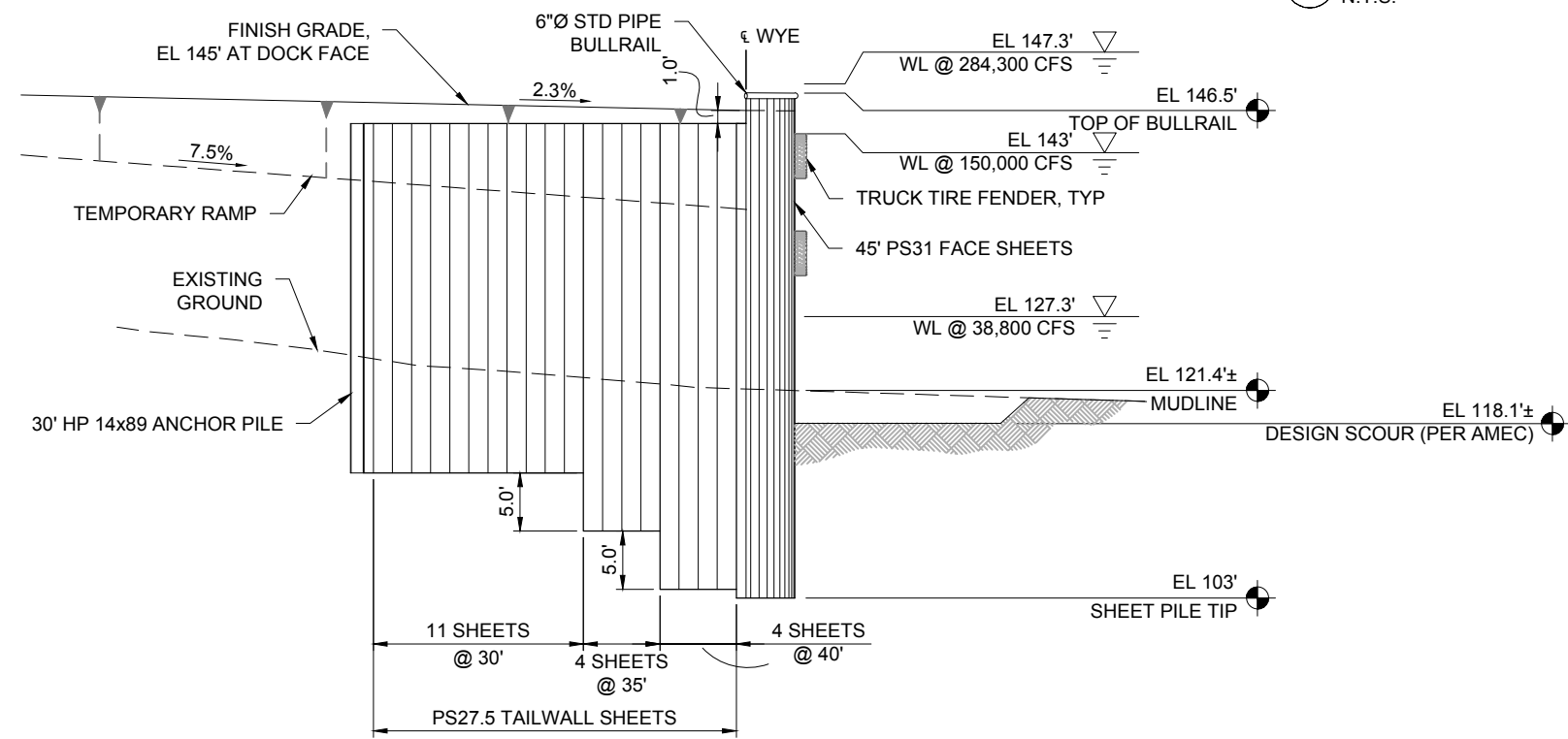
JUNGJUK PORT SITE PLAN
SCALE 1" = 300'

Associated Engineering Drawings 01 Site Plan.dwg (PND) JUL 2015		DONLIN GOLD PROJECT APPLICANT: Donlin Gold, LLC 4720 Business Park Blvd., Suite G-25 Anchorage, Alaska 99503		DRAWING TITLE: JUNGJUK PORT SITE PLAN	
NAD 1983 UTM Zone 4N		FIGURE NO. TA-301D1		FILE NO. POA-1995-120	
SCALE: AS SHOWN		DATE: 10/2/2015			



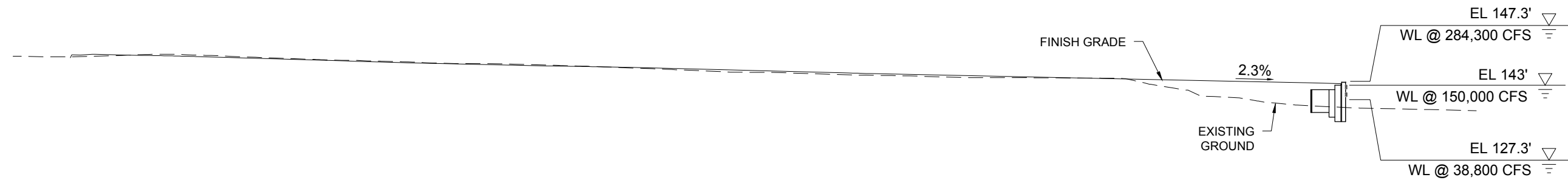
A TYPICAL TAILWALL SECTION
301D2 N.T.S.

C TAILWALL SECTION @ RAMP
301D2 N.T.S.

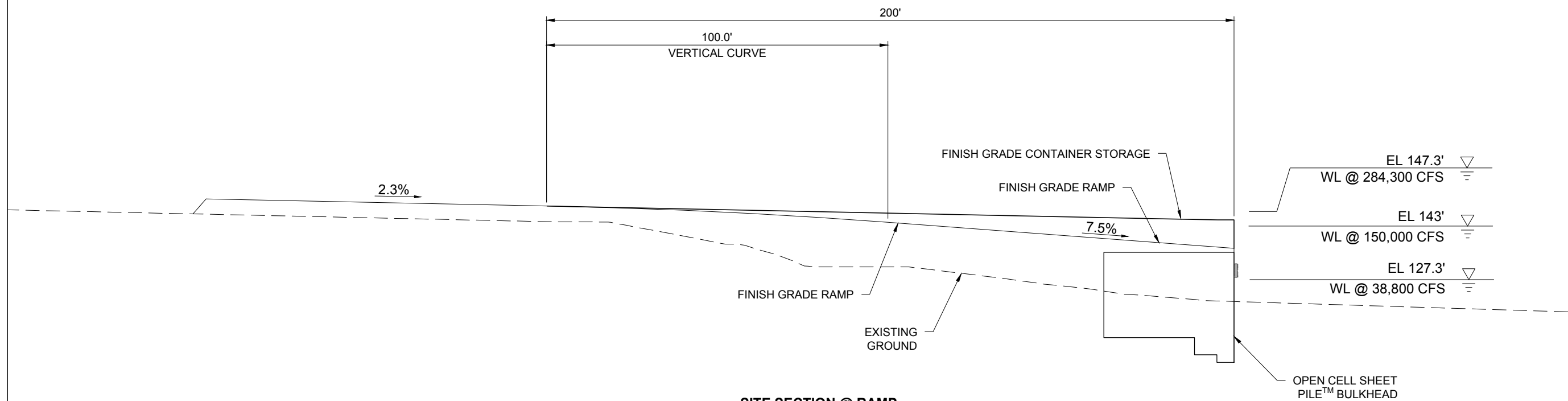


B TAILWALL SECTION ADJACENT TO RAMP
301D2 N.T.S.

Associated Engineering Drawings 03 Tailwall Sections.dwg (PND) JUL 2015	DONLIN GOLD PROJECT APPLICANT: Donlin Gold, LLC 4720 Business Park Blvd., Suite G-25 Anchorage, Alaska 99503		DRAWING TITLE: JUNGJUK PORT TAILWALL SECTIONS	
	NAD 1983 UTM Zone 4N		FIGURE NO. TA-301D2	FILE NO. POA-1995-120
SCALE: AS SHOWN	DATE: 8/11/2015			



A-A
301D3
SITE SECTION
N.T.S.



B-B
301D3
SITE SECTION @ RAMP
N.T.S.

Associated Engineering Drawings

04 Site Sections.dwg (PND) JUL 2015

DONLIN GOLD PROJECT
APPLICANT: Donlin Gold, LLC
4720 Business Park Blvd., Suite G-25
Anchorage, Alaska 99503

NAD 1983 UTM Zone 4N

SCALE: AS SHOWN

DATE: 8/11/2015

DRAWING TITLE:

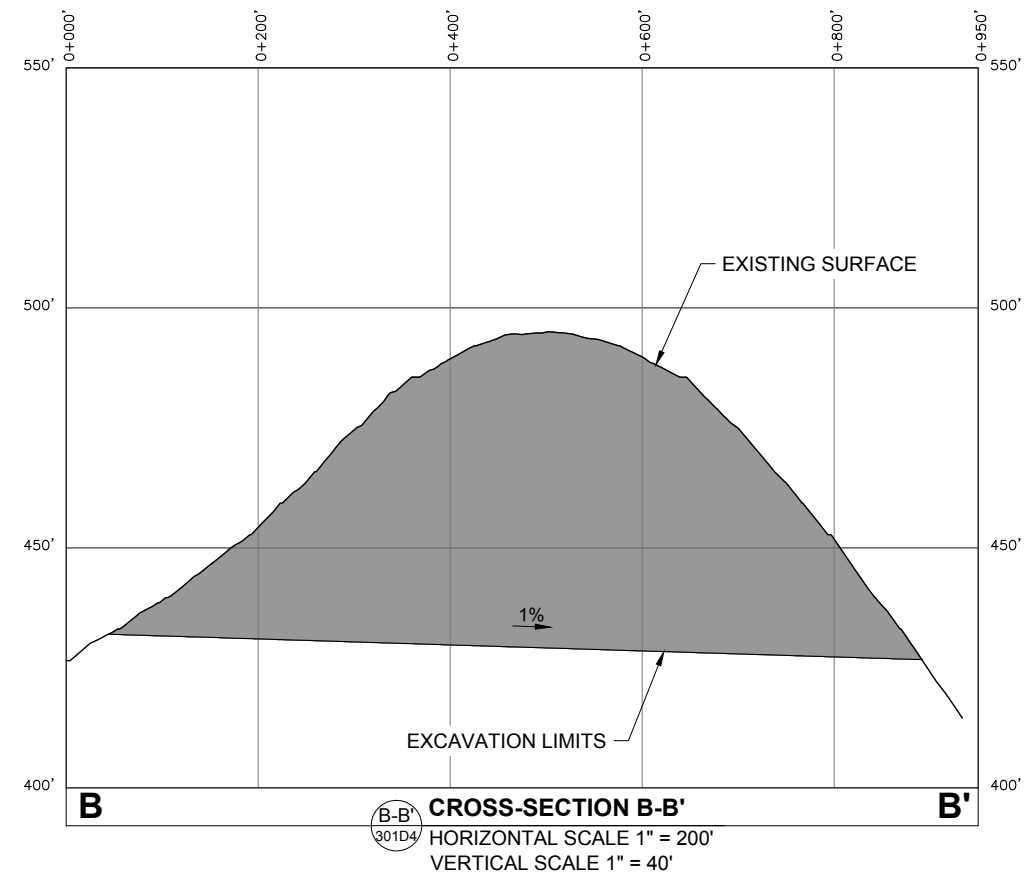
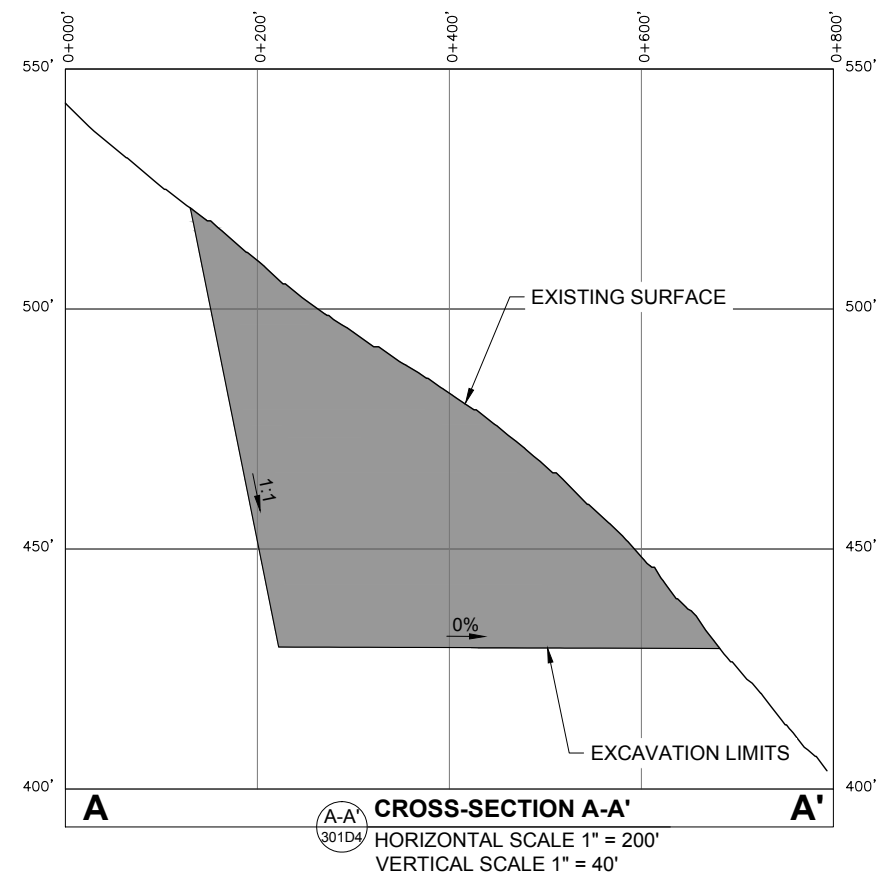
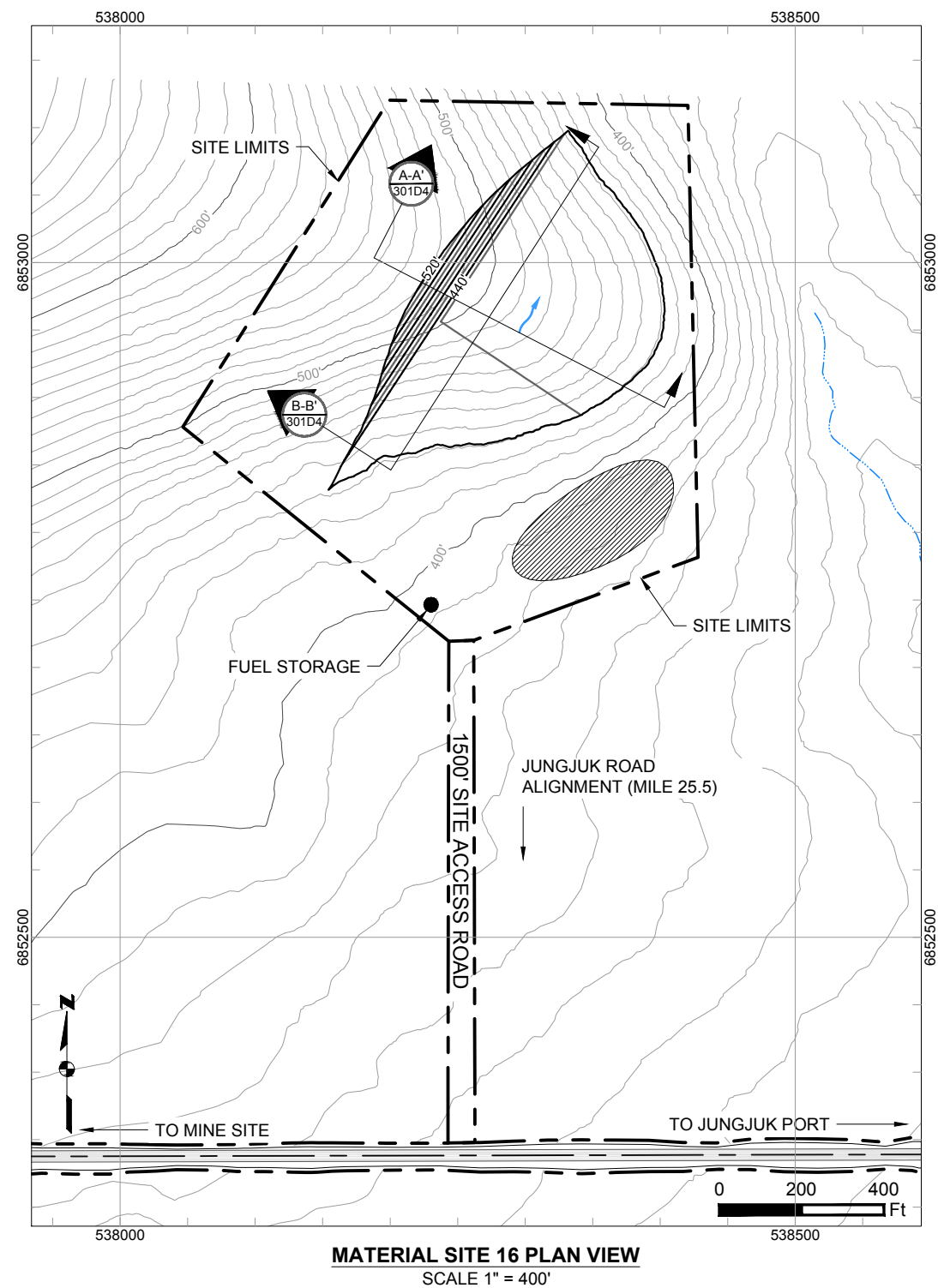
JUNGJUK PORT SITE SECTIONS

FIGURE NO.

TA-301D3

FILE NO.

POA-1995-120



- | | |
|------------------------------|---|
| — Existing 10' Contours | ■ Cut Area |
| —550'— Existing 50' Contours | — Proposed Drainage Direction |
| — Proposed 10' Contours | ▨ Overburden And Growth Media Stockpile |
| —550'— Proposed 20' Contours | ● Temporary Fuel Storage |

Associated Engineering Drawings

Donlin_Jungjuk_MaterialSites_Rev3_150202.dwg (RECON) FEB 2015

DONLIN GOLD PROJECT
APPLICANT: Donlin Gold, LLC
4720 Business Park Blvd., Suite G-25
Anchorage, Alaska 99503

NAD 1983 UTM Zone 4N

SCALE: AS SHOWN

DATE: 8/11/2015

DRAWING TITLE:

**MATERIAL SITE 16
LAYOUT AND SECTIONS**

FIGURE NO.

TA-301D4

FILE NO.

POA-1995-120