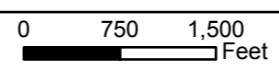


S022N049W
S022N048W

- Proposed Jungjuk Road
- 10' Contour
- Cross Section
- Unnamed River/Stream
- Road Milepost
- 100' Contour
- Project Disturbance This Sheet
- Named River/Stream
- ▶ Stream Flow Direction
- Proposed Disturbance (Other Sheets)
- Figure Detail Reference

Associated Engineering Drawings



DONLIN GOLD PROJECT
 APPLICANT: Donlin Gold, LLC
 4720 Business Park Blvd., Suite G-25
 Anchorage, Alaska 99503

NAD 1983 UTM Zone 4N

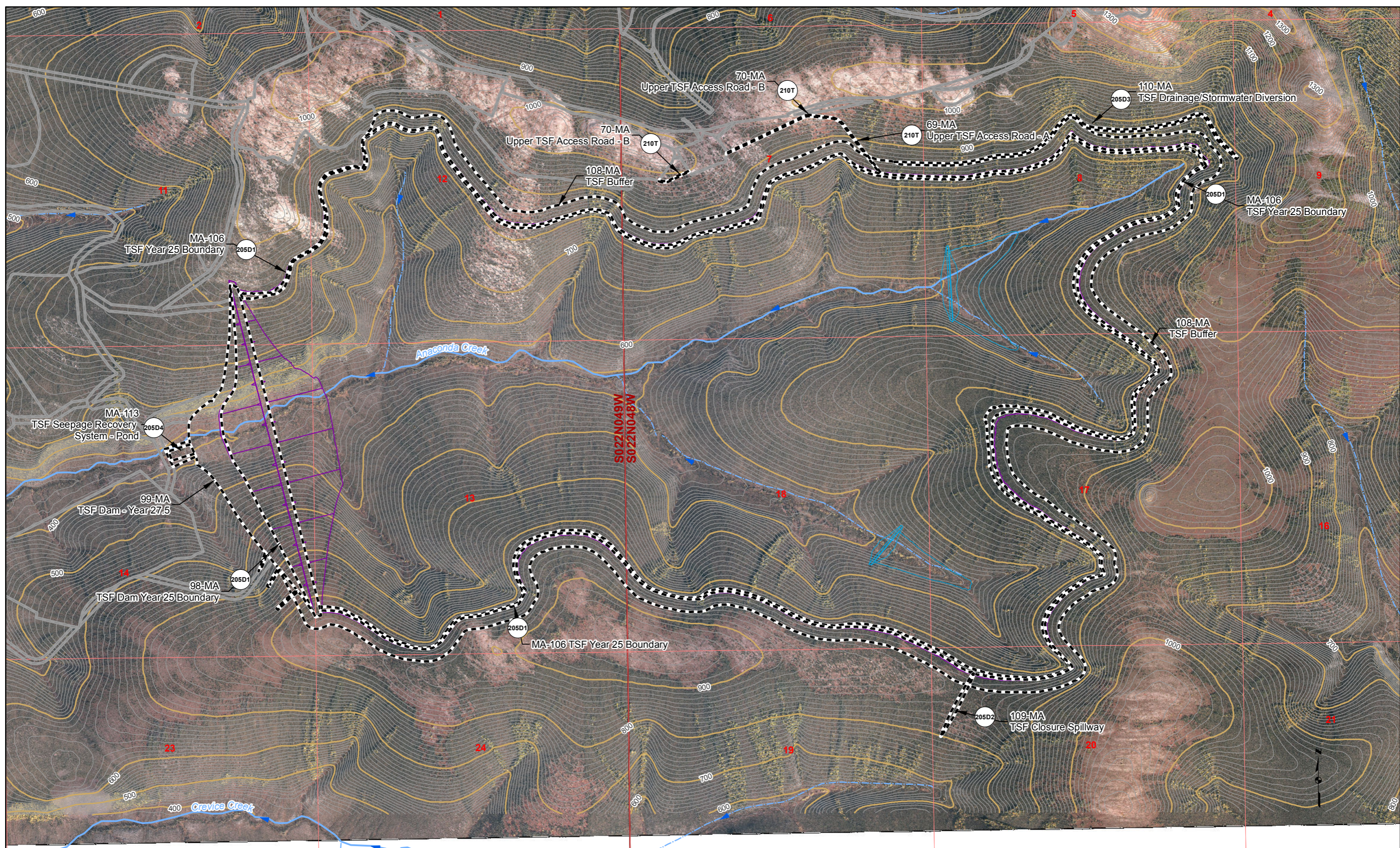
SCALE: 1 inch = 1,500 feet

DATE: 10/5/2015

DRAWING TITLE: **PLAN VIEW
MINE AREA
ENGINEERING MAP**

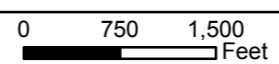
FIGURE NO. **MA-205B**

FILE NO. **POA-1995-120**



- Proposed Jungjuk Road
- 10' Contour
- Cross Section
- Unnamed River/Stream
- Road Milepost
- 100' Contour
- Project Disturbance This Sheet
- Named River/Stream
- Stream Flow Direction
- Proposed Disturbance (Other Sheets)
- Figure Detail Reference

Associated Engineering Drawings

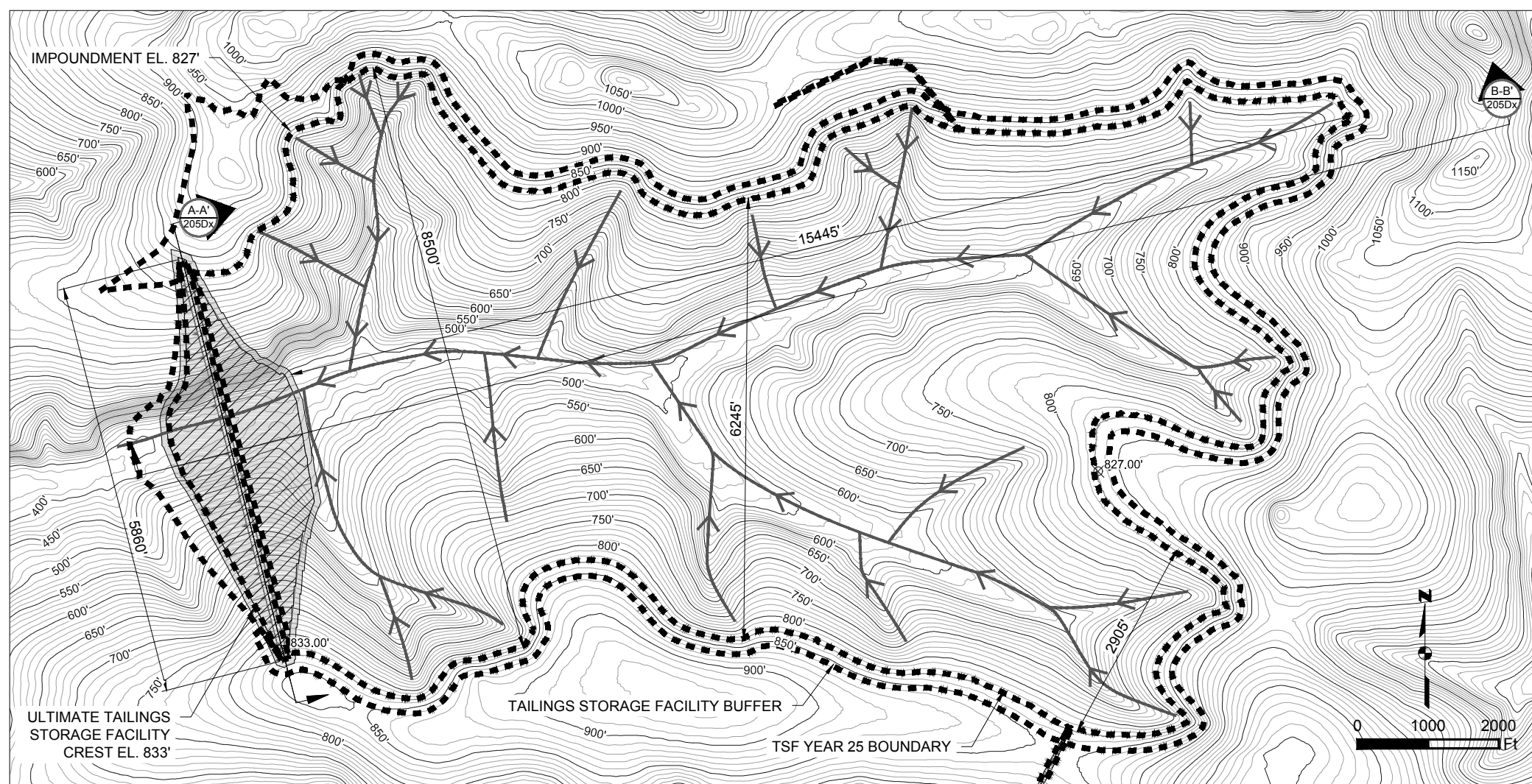


DONLIN GOLD PROJECT
 APPLICANT: Donlin Gold, LLC
 4720 Business Park Blvd., Suite G-25
 Anchorage, Alaska 99503

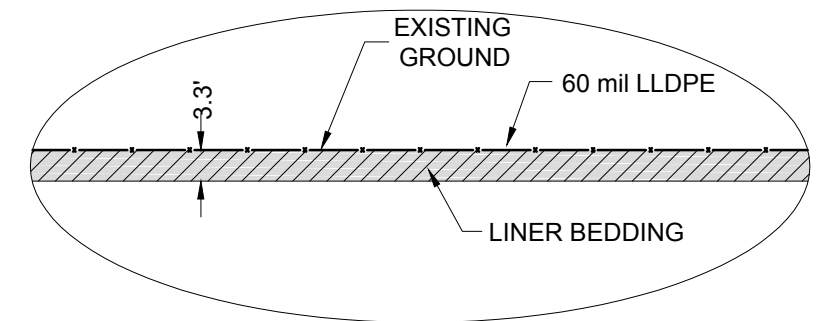
NAD 1983 UTM Zone 4N
 SCALE: 1 inch = 1,500 feet
 DATE: 10/5/2015

DRAWING TITLE: **PLAN VIEW
 MINE AREA
 ENGINEERING MAP**

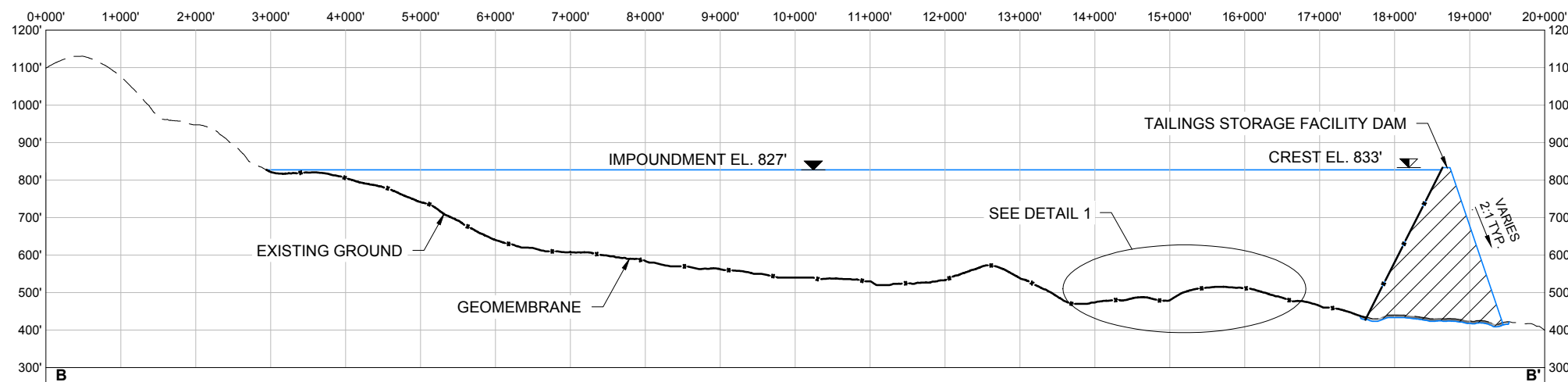
FIGURE NO. **MA-205C** FILE NO. **POA-1995-120**



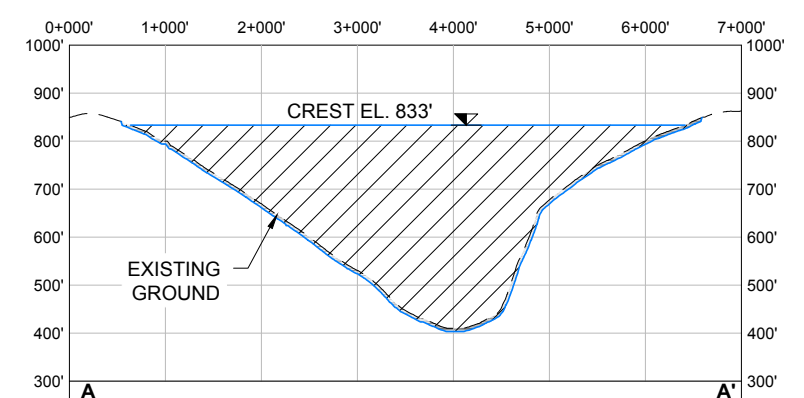
TSF YEAR 25 BOUNDARY PLAN
SCALE 1" = 2000'



TYPICAL DETAIL
N.T.S.



A-A TSF YEAR 25 BOUNDARY SECTION A-A'
HORIZONTAL SCALE 1" = 2000'
VERTICAL SCALE 1" = 400'



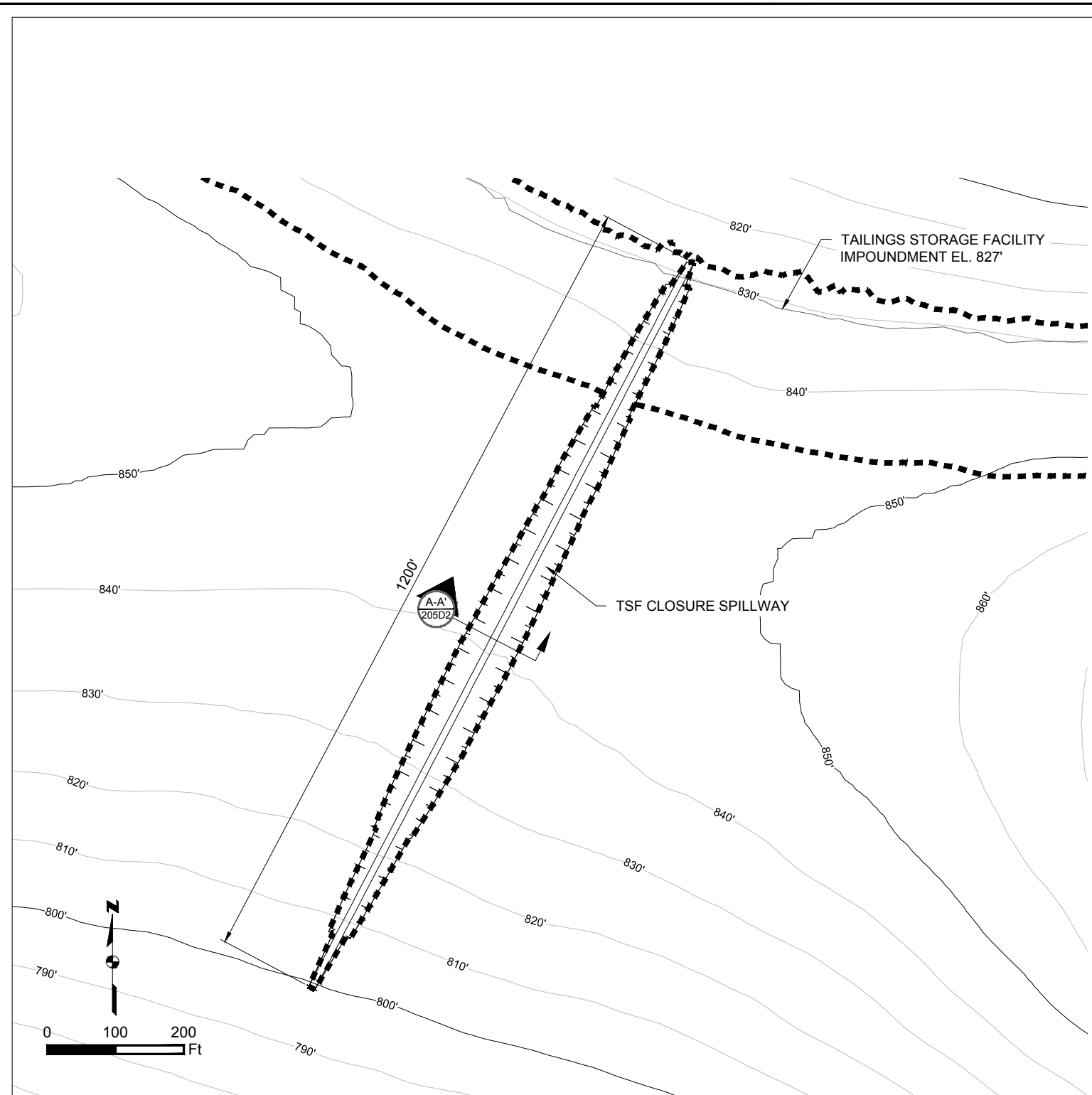
B-B TSF YEAR 25 BOUNDARY SECTION B-B'
HORIZONTAL SCALE 1" = 2000'
VERTICAL SCALE 1" = 400'

— Existing 10' Contours	▨ Fill Area	▣ Project Disturbance
— Existing 50' Contours	▩ Cut Area	— Geomembrane
— Existing Ground	— Diversion Channel	
— Proposed Grade		

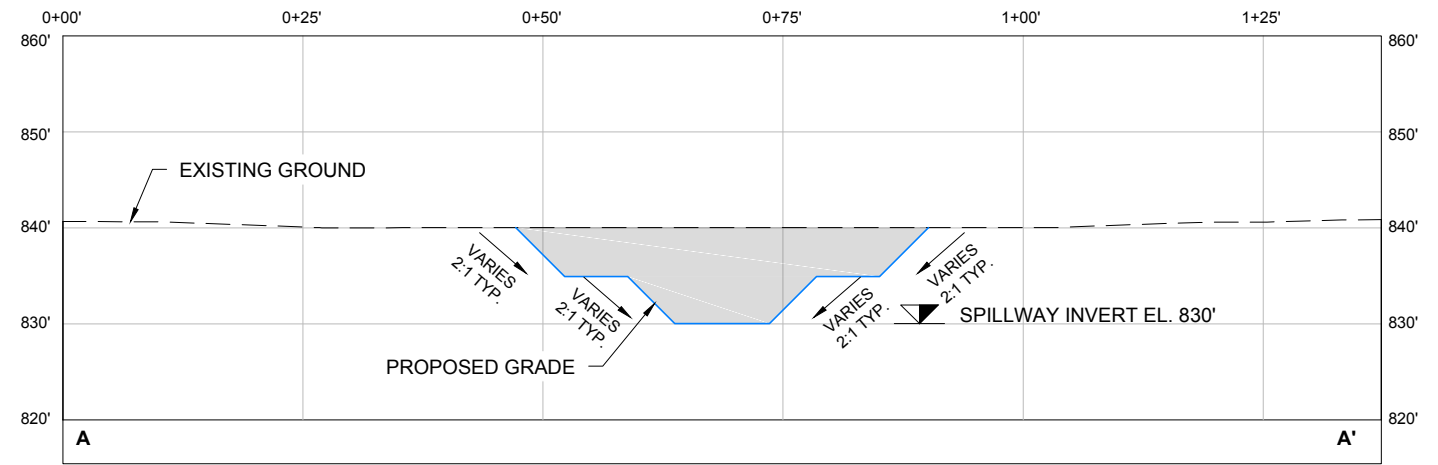
Associated Engineering Drawings	
ULTIMATE_TAILINGS_STORAGE_FACILITY.dwg (BGC) JUN 2012	

DONLIN GOLD PROJECT	
APPLICANT: Donlin Gold, LLC 4720 Business Park Blvd., Suite G-25 Anchorage, Alaska 99503	
NAD 1983 UTM Zone 4N	
SCALE: AS SHOWN	DATE: 9/11/2015

DRAWING TITLE:	
TSF YEAR 25 BOUNDARY DETAIL	
FIGURE NO.	FILE NO.
MA-205D1	POA-1995-120



TSF CLOSURE SPILLWAY PLAN
SCALE 1" = 200'



TSF CLOSURE SPILLWAY SECTION A-A'
HORIZONTAL SCALE 1" = 20'
VERTICAL SCALE 1" = 20'

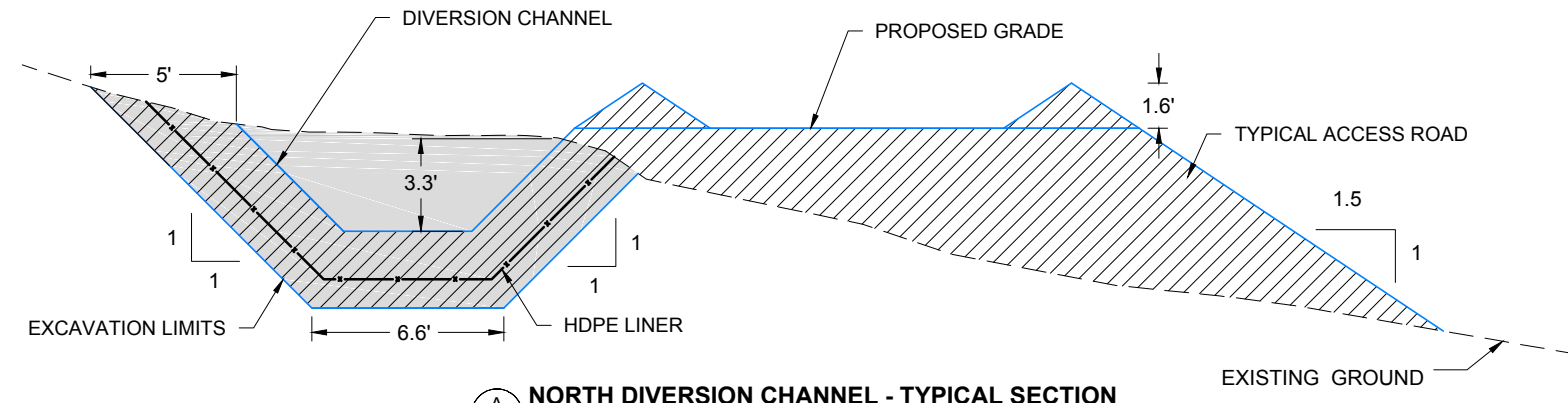
— Existing 10' Contours	▨ Fill Area	■ Project Disturbance
— Existing 50' Contours	■ Cut Area	
— Existing Ground	— Existing Ground	
— Proposed Grade		

Associated Engineering Drawings
CLOSURE_SPILLWAY.dwg (BGC) JUN 2012

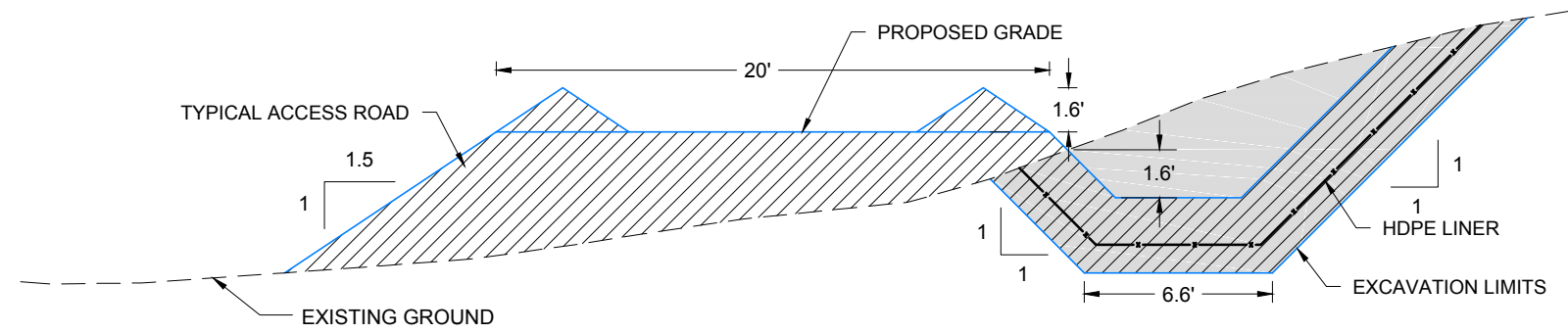
DONLIN GOLD PROJECT	
APPLICANT: Donlin Gold, LLC	
4720 Business Park Blvd., Suite G-25	
Anchorage, Alaska 99503	
NAD 1983 UTM Zone 4N	
SCALE: AS SHOWN	DATE: 9/11/2015

DRAWING TITLE:	
TSF CLOSURE SPILLWAY	
DETAIL	
FIGURE NO.	FILE NO.
MA-205D2	POA-1995-120






PATH: C:\Users\mtegniewicz\Dropbox\Donlin\181202_010_mapping_404_support\revision_a\MA_TSFClosure_Spillway.dwg



A NORTH DIVERSION CHANNEL - TYPICAL SECTION
 205D3 N.T.S.



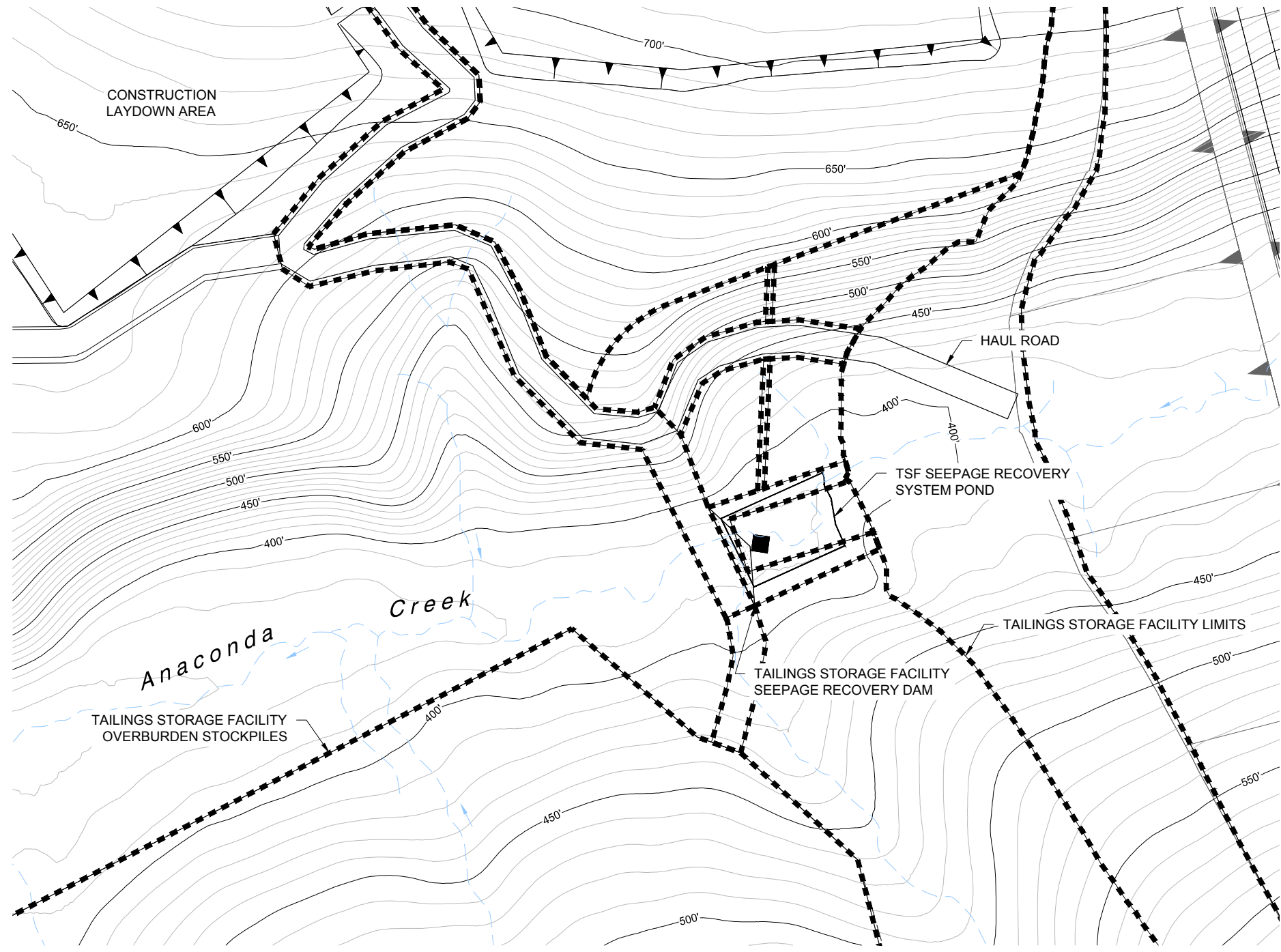
B SOUTH DIVERSION CHANNEL - TYPICAL SECTION
 205D3 N.T.S.

-  Fill Area
-  Cut Area
-  Existing Ground
-  Proposed Grade
-  HDPE Liner (40mil)

Associated Engineering Drawings	
TAILINGS_STORAGE_FACILITY_DIVERSION_CHANNELS.dwg (BGC) JUN 2012	

DONLIN GOLD PROJECT APPLICANT: Donlin Gold, LLC 4720 Business Park Blvd., Suite G-25 Anchorage, Alaska 99503	
SCALE: AS SHOWN	DATE: 9/11/2015

DRAWING TITLE: TSF DRAINAGE - STORMWATER DIVERSION DETAIL	
FIGURE NO. TA-205D3	FILE NO. POA-1995-120



TSF SEEPAGE RECOVERY SYSTEM POND PLAN
SCALE 1" = 400'

Existing 10' Contours Existing 50' Contours	Project Disturbance	Associated Engineering Drawings M19C-SP-SE_01.dwg (BAKER) SEP 2014		DONLIN GOLD PROJECT APPLICANT: Donlin Gold, LLC 4720 Business Park Blvd., Suite G-25 Anchorage, Alaska 99503		DRAWING TITLE: TSF SEEPAGE RECOVERY SYSTEM POND DETAIL	
				NAD 1983 UTM Zone 4N SCALE: AS SHOWN		FIGURE NO. MA-205D4 DATE: 9/28/2015 FILE NO. POA-1995-120	

PATH: C:\Users\mlengiewicz\Dropbox\Donlin\181202_010_mapping_404_support\revision_a\MA_TSFSseepage_Recovery_System.dwg