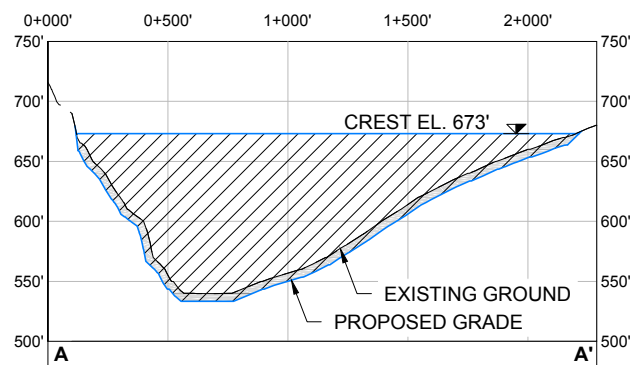
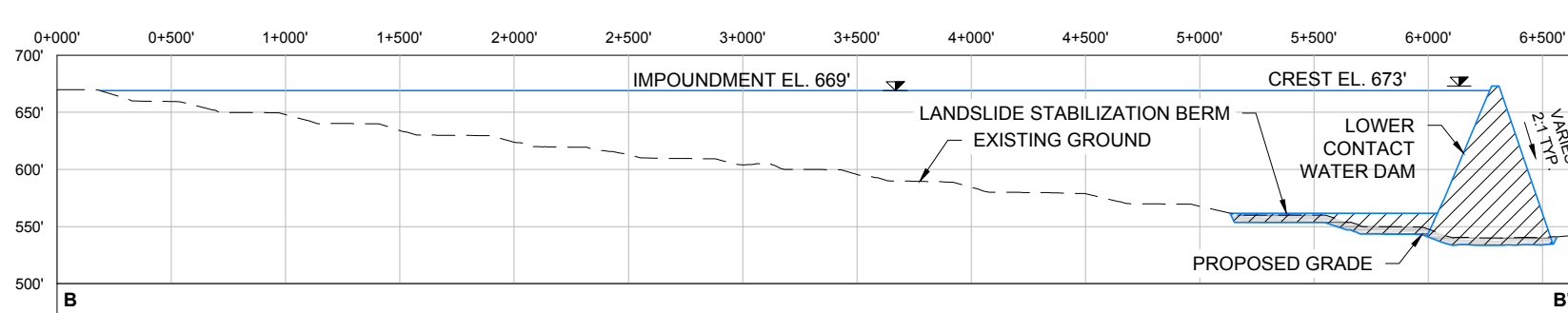


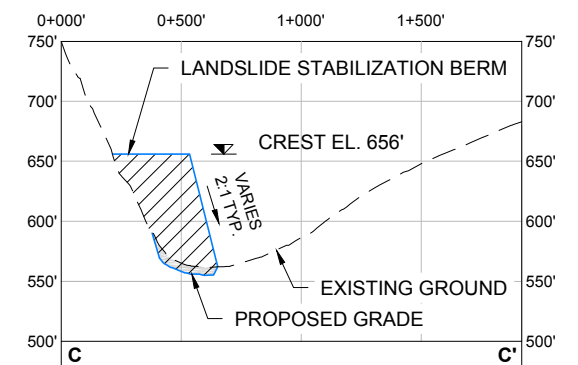
AMERICAN CREEK LOWER CONTACT WATER DAM AND POND PLAN
SCALE 1" = 800'



AMERICAN CREEK LOWER CONTACT WATER DAM AND POND SECTION A-A'
HORIZONTAL SCALE 1" = 800'
VERTICAL SCALE 1" = 160'



AMERICAN CREEK LOWER CONTACT WATER DAM AND POND SECTION B-B'
HORIZONTAL SCALE 1" = 800'
VERTICAL SCALE 1" = 160'



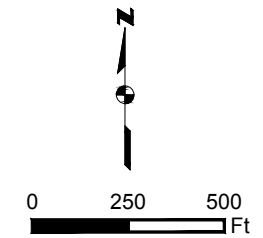
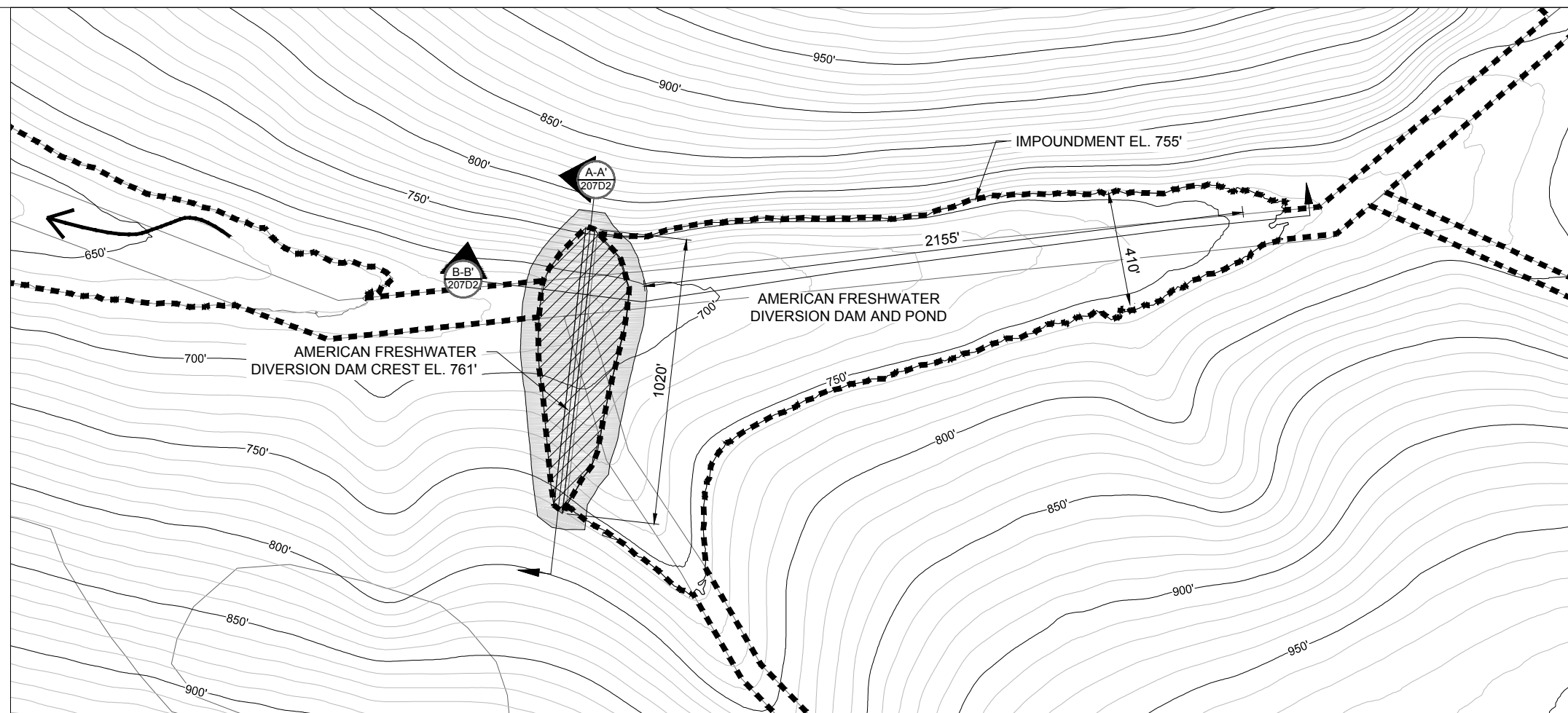
AMERICAN CREEK LOWER CONTACT WATER DAM AND POND SECTION C-C'
HORIZONTAL SCALE 1" = 800'
VERTICAL SCALE 1" = 160'

— Existing 10' Contours	▨ Fill Area	▣ Project Disturbance
— Existing 50' Contours	▩ Cut Area	← American Creek Drainage
--- Existing Ground	— Proposed Grade	

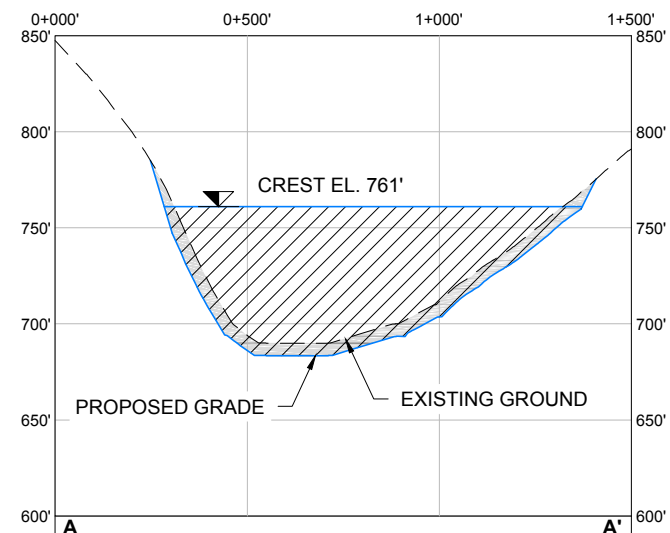
Associated Engineering Drawings	
LOWER_CONTACT_WATER_DAM_AND_IMPOUNDMENT.dwg	
(BGC) JUNE 2012	

DONLIN GOLD PROJECT	
APPLICANT: Donlin Gold, LLC	
4720 Business Park Blvd., Suite G-25	
Anchorage, Alaska 99503	
NAD 1983 UTM Zone 4N	
SCALE: AS SHOWN	DATE: 9/7/2015

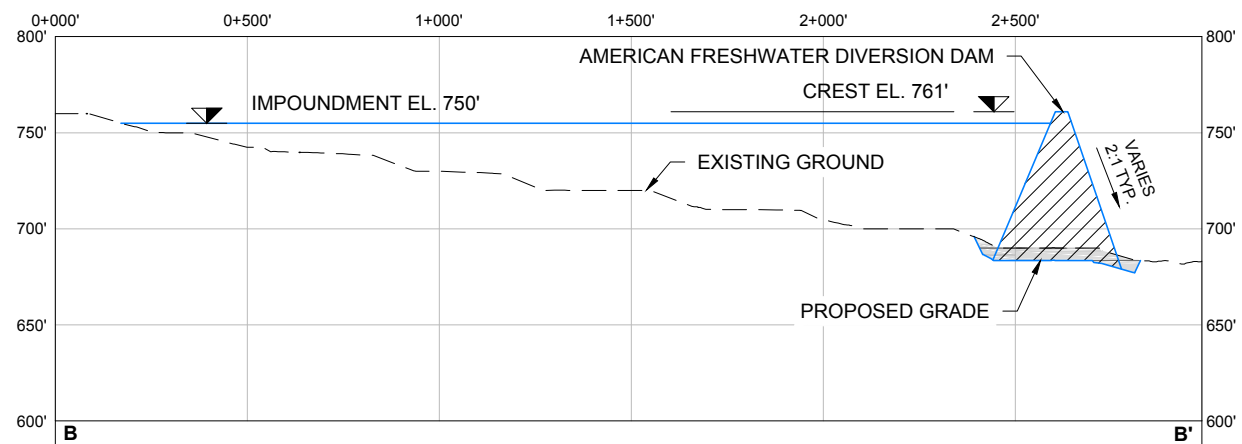
DRAWING TITLE:	
AMERICAN CREEK LOWER CONTACT WATER DAM AND POND DETAIL	
FIGURE NO.	FILE NO.
MA-207D1	POA-1995-120



AMERICAN FRESHWATER DIVERSION DAM AND POND PLAN
SCALE 1" = 500'



A-A'
207D2
AMERICAN FRESHWATER DIVERSION DAM AND POND SECTION A-A'
HORIZONTAL SCALE 1" = 500'
VERTICAL SCALE 1" = 100'



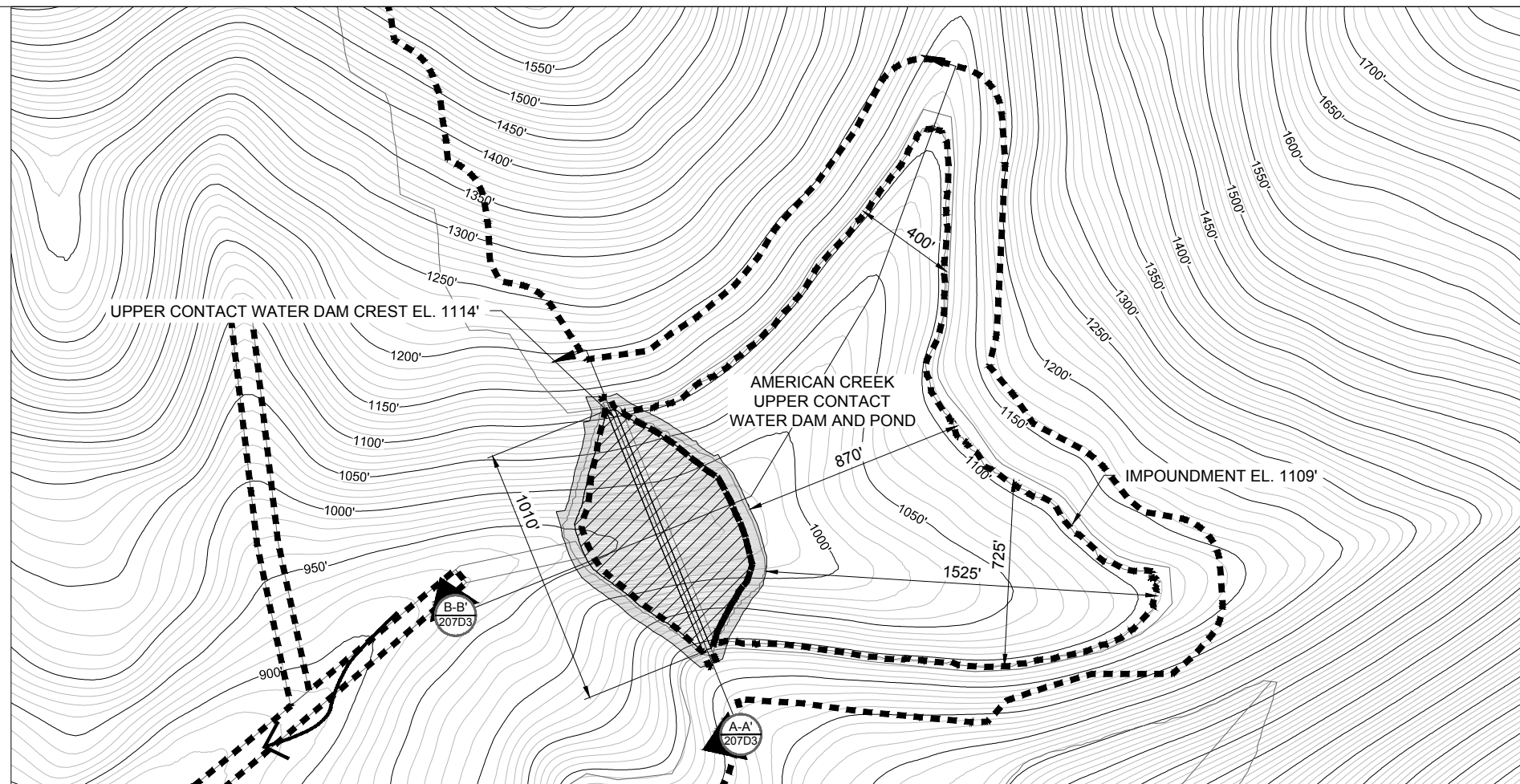
B-B'
207D2
AMERICAN FRESHWATER DIVERSION DAM AND POND SECTION B-B'
HORIZONTAL SCALE 1" = 500'
VERTICAL SCALE 1" = 100'

— Existing 10' Contours	▨ Fill Area	▣ Project Disturbance
— Existing 50' Contours	▩ Cut Area	← American Creek Drainage
- - - Existing Ground	— Proposed Grade	

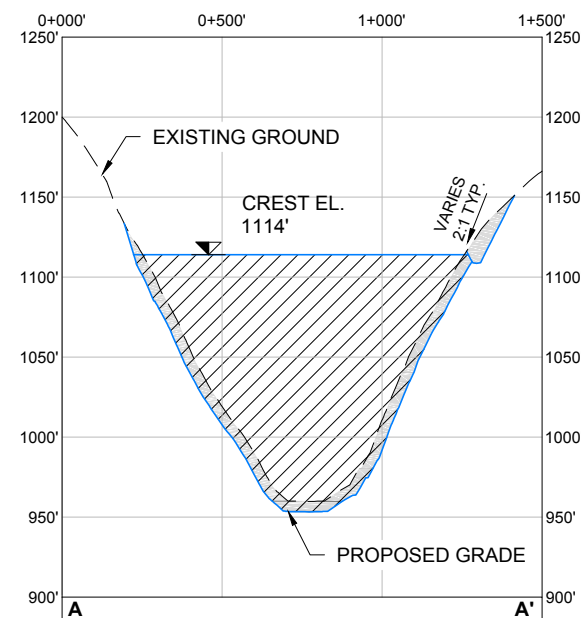
Associated Engineering Drawings	
AMERICAN FRESHWATER DIVERSION DAM AND IMPOUNDMENT.dwg (BGC) JUNE 2012	

DONLIN GOLD PROJECT	
APPLICANT: Donlin Gold, LLC 4720 Business Park Blvd., Suite G-25 Anchorage, Alaska 99503	
NAD 1983 UTM Zone 4N	
SCALE: AS SHOWN	DATE: 9/11/2015

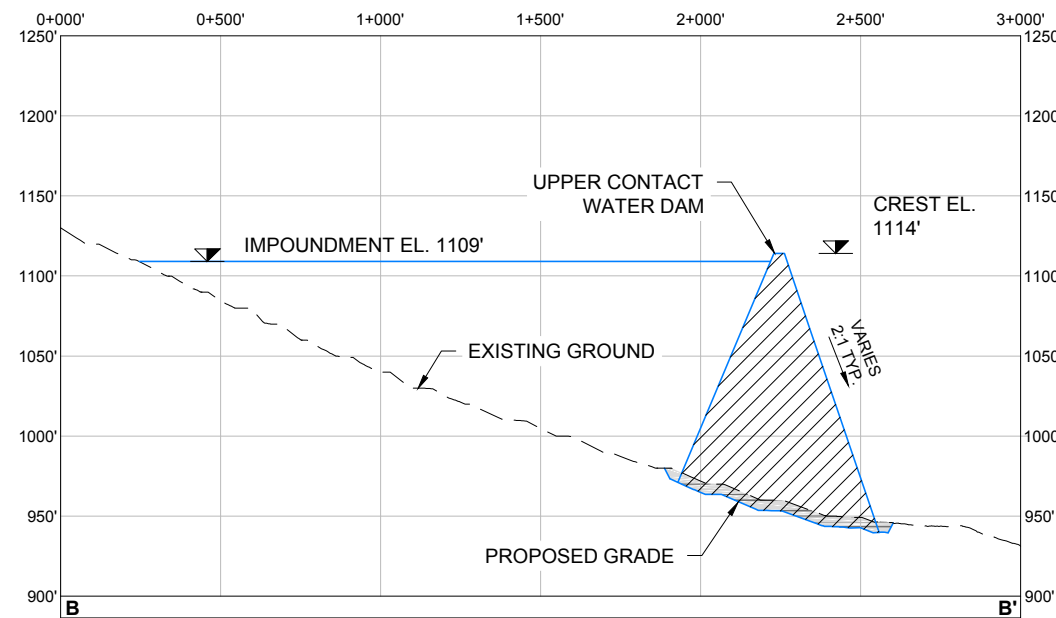
DRAWING TITLE: AMERICAN FRESHWATER DIVERSION DAM AND POND DETAIL	
FIGURE NO. MA-207D2	FILE NO. POA-1995-120



AMERICAN CREEK UPPER CONTACT WATER DAM AND POND PLAN
SCALE 1" = 600'



AMERICAN CREEK UPPER CONTACT WATER DAM AND POND SECTION A-A'
HORIZONTAL SCALE 1" = 600'
VERTICAL SCALE 1" = 120'



AMERICAN CREEK UPPER CONTACT WATER DAM AND POND SECTION B-B'
HORIZONTAL SCALE 1" = 600'
VERTICAL SCALE 1" = 120'

- Existing 10' Contours
- Existing 50' Contours
- ▨ Fill Area
- ▩ Cut Area
- - - Existing Ground
- Proposed Grade
- ▣ Project Disturbance
- ← American Creek Drainage

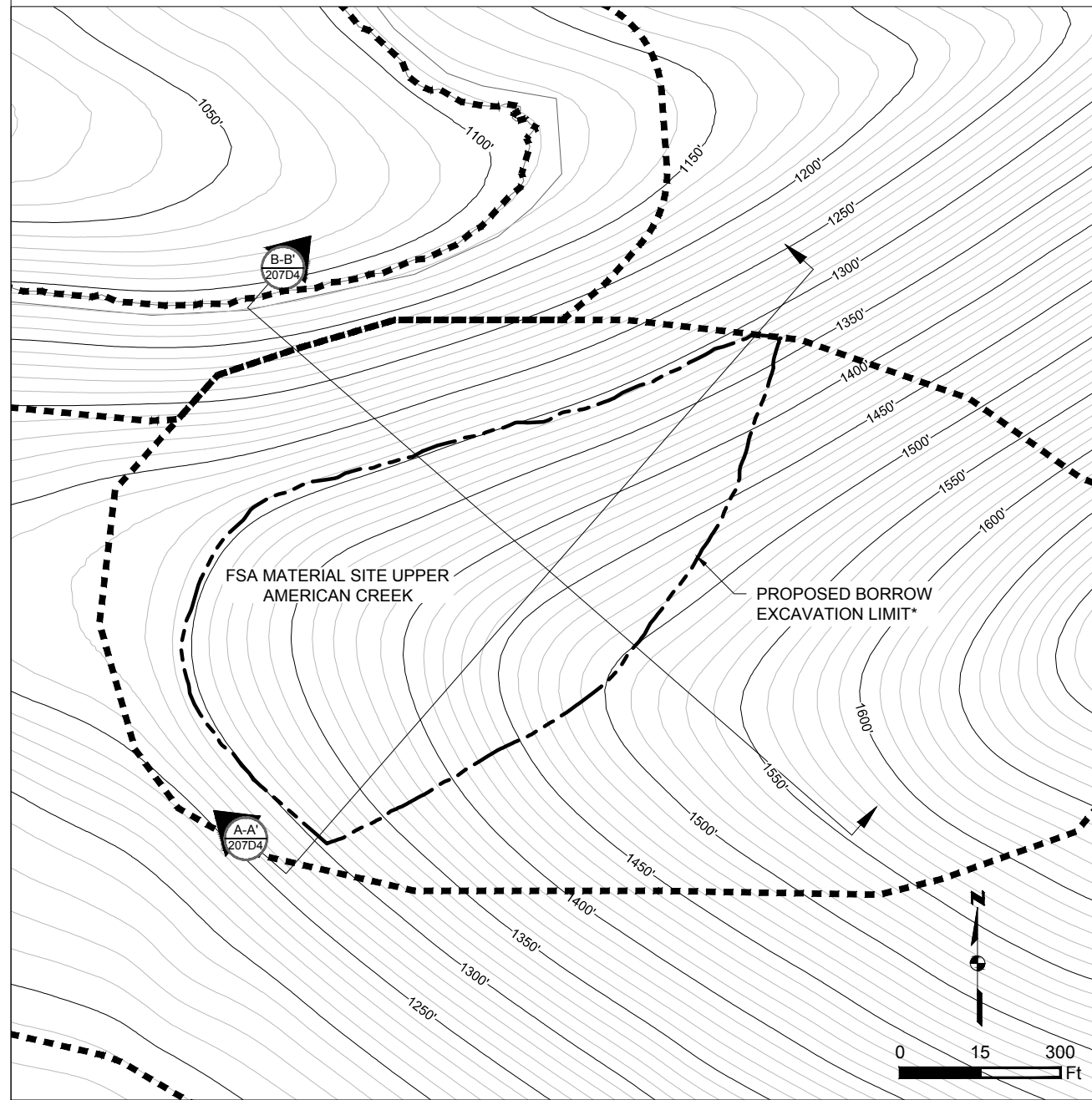
Associated Engineering Drawings
UPPER_CONTACT_WATER_DAM_AND_IMPONDMENT.dwg (BGC)
JUNE 2012

DONLIN GOLD PROJECT
APPLICANT: Donlin Gold, LLC
4720 Business Park Blvd., Suite G-25
Anchorage, Alaska 99503

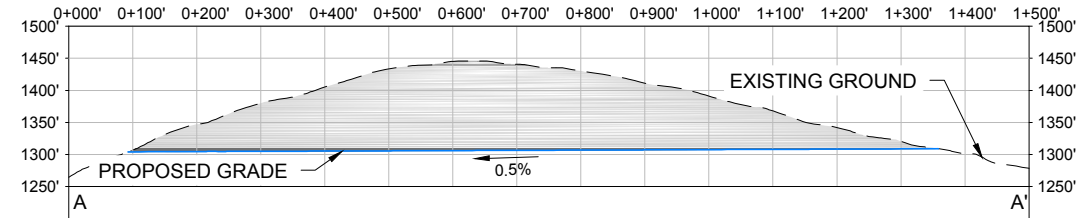
DRAWING TITLE:
AMERICAN CREEK UPPER CONTACT WATER DAM AND POND DETAIL

NAD 1983 UTM Zone 4N
SCALE: AS SHOWN DATE: 9/11/2015

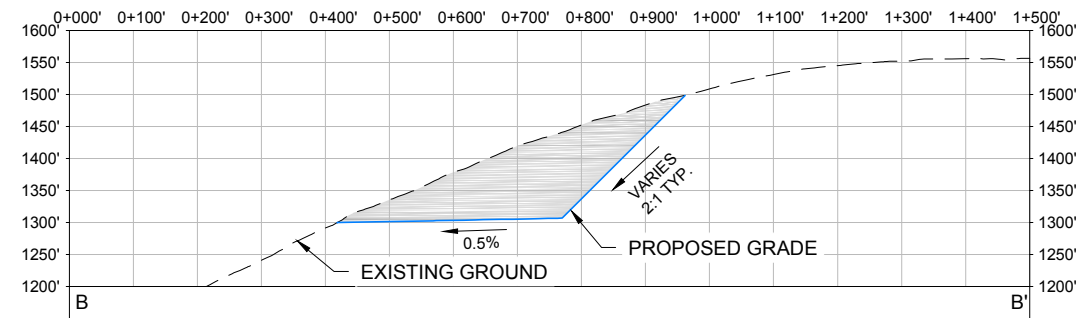
FIGURE NO. **MA-207D3** FILE NO. **POA-1995-120**



FSA MATERIAL SITE UPPER AMERICAN CREEK PLAN
SCALE 1" = 300'



(A-A') FSA MATERIAL SITE UPPER AMERICAN CREEK SECTION A-A'
HORIZONTAL SCALE 1" = 300'
VERTICAL SCALE 1" = 60'



(B-B') FSA MATERIAL SITE UPPER AMERICAN CREEK SECTION B-B'
HORIZONTAL SCALE 1" = 300'
VERTICAL SCALE 1" = 60'

— Existing 10' Contours	▨ Fill Area	■ Project Disturbance
— Existing 50' Contours	■ Cut Area	--- Borrow Excavation Limit*
--- Existing Ground	— Proposed Grade	

NOTE:
* BORROW LIMIT SUBJECT TO CHANGE PENDING FURTHER GEOTECHNICAL INVESTIGATION

Associated Engineering Drawings
UPPER_CONTACT_WATER_DAM_QUARRY.dwg (BGC) JUNE 2012

DONLIN GOLD PROJECT
APPLICANT: Donlin Gold, LLC 4720 Business Park Blvd., Suite G-25 Anchorage, Alaska 99503
NAD 1983 UTM Zone 4N
SCALE: AS SHOWN DATE: 9/28/2015

DRAWING TITLE:	FSA MATERIAL SITE UPPER AMERICAN CREEK DETAIL
FIGURE NO.	MA-207D4
FILE NO.	POA-1995-120