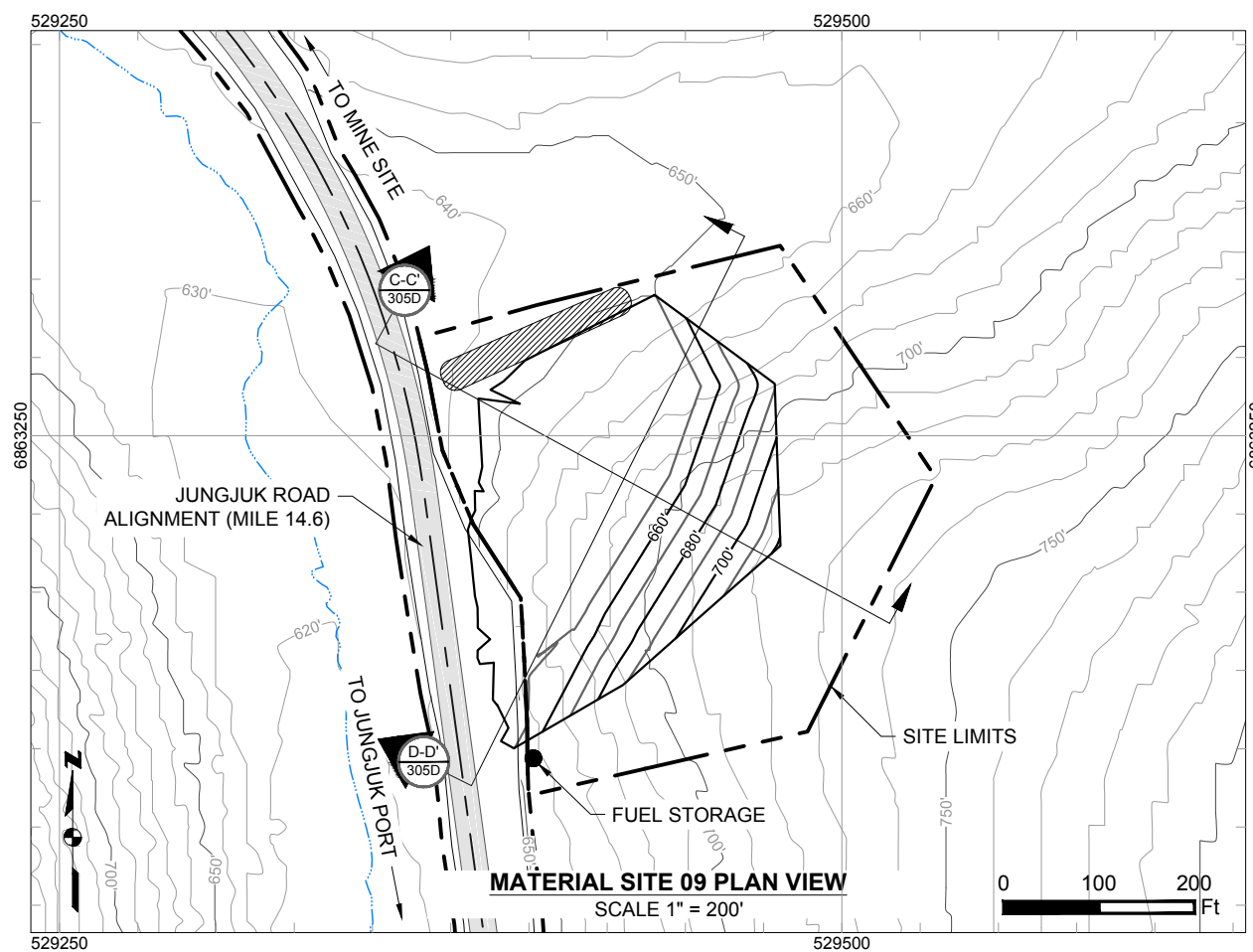
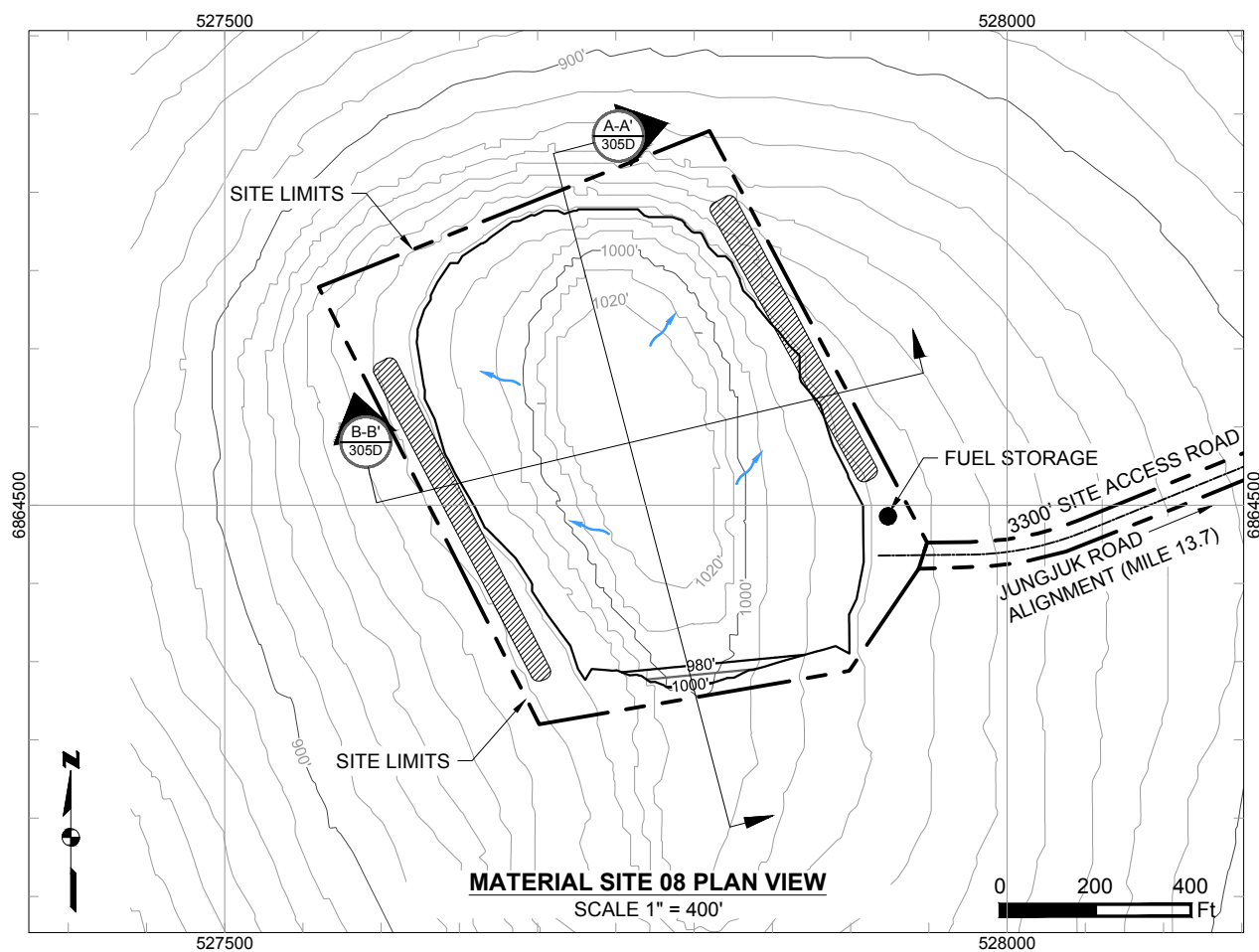
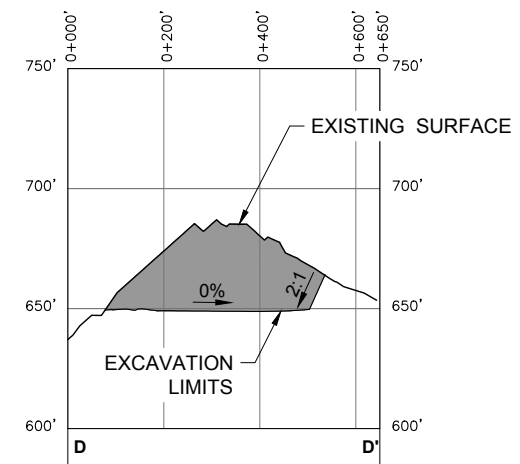
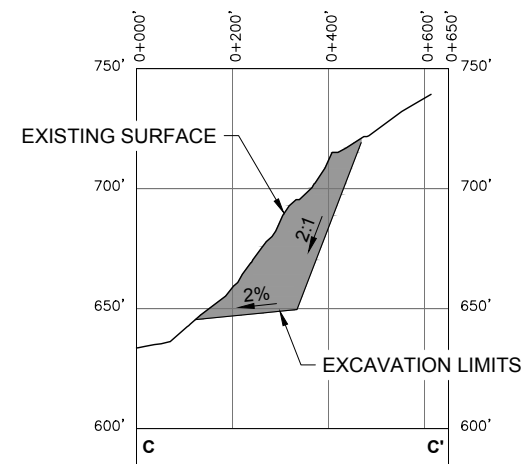
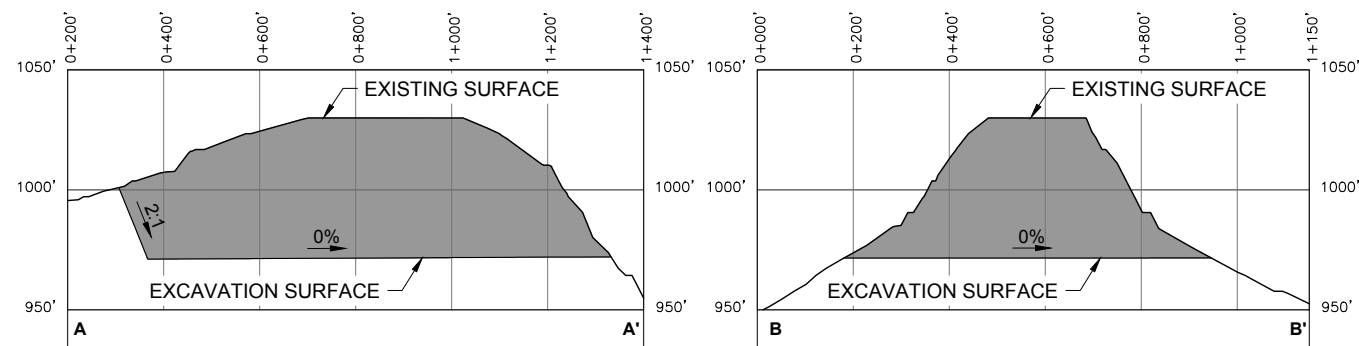


- Road Milepost
- Proposed Jungjuk Road
- Bridge
- Project Disturbance Limit
- Culvert
- 10' Contour
- 100' Contour
- Stream Flow Direction
- Cross Section
- Powerline
- Unnamed River/Stream
- Named River/Stream
- Figure Detail Reference

Associated Engineering Drawings	
ACAD-Donlin Jungjuk Alignment and toes.dxf (Recon);	
Donlin_Jungjuk_MaterialSites_Rev3_150202 (Recon)	

DONLIN GOLD PROJECT	
APPLICANT: Donlin Gold, LLC	
4720 Business Park Blvd., Suite G-25	
Anchorage, Alaska 99503	
NAD 1983 UTM Zone 4N	
SCALE: 1 inch = 1,000 feet	DATE: 8/12/2015

DRAWING TITLE: <b>PLAN VIEW ACCESS ROAD ENGINEERING MAP</b>	
FIGURE NO. <b>TA-305C</b>	FILE NO. <b>POA-1995-120</b>



- Existing 10' Contours
- Existing 50' Contours
- Proposed 10' Contours
- Proposed 20' Contours
- Cut Area
- Proposed Drainage Direction
- Overburden And Growth Media Stockpile
- Temporary Fuel Storage

**Associated Engineering Drawings**

Donlin\_Jungjuk\_MaterialSites\_Rev3\_150202.dwg (RECON) FEB 2015

**DONLIN GOLD PROJECT**  
 APPLICANT: Donlin Gold, LLC  
 4720 Business Park Blvd., Suite G-25  
 Anchorage, Alaska 99503

NAD 1983 UTM Zone 4N

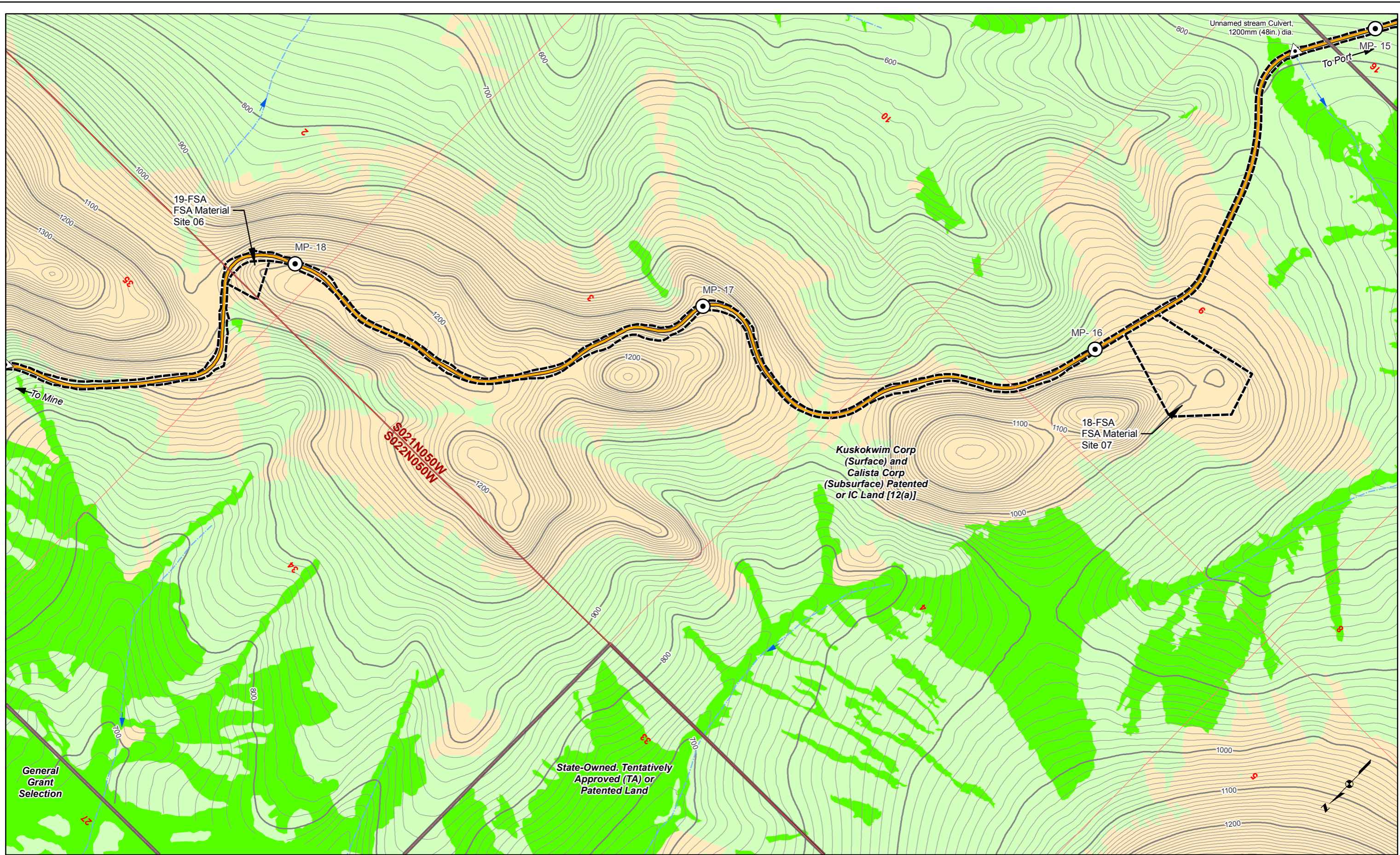
SCALE: AS SHOWN

DATE: 8/11/2015

DRAWING TITLE:  
**MATERIAL SITES 08 & 09 LAYOUTS AND SECTIONS**

FIGURE NO.:  
**TA-305D**

FILE NO.:  
**POA-1995-120**

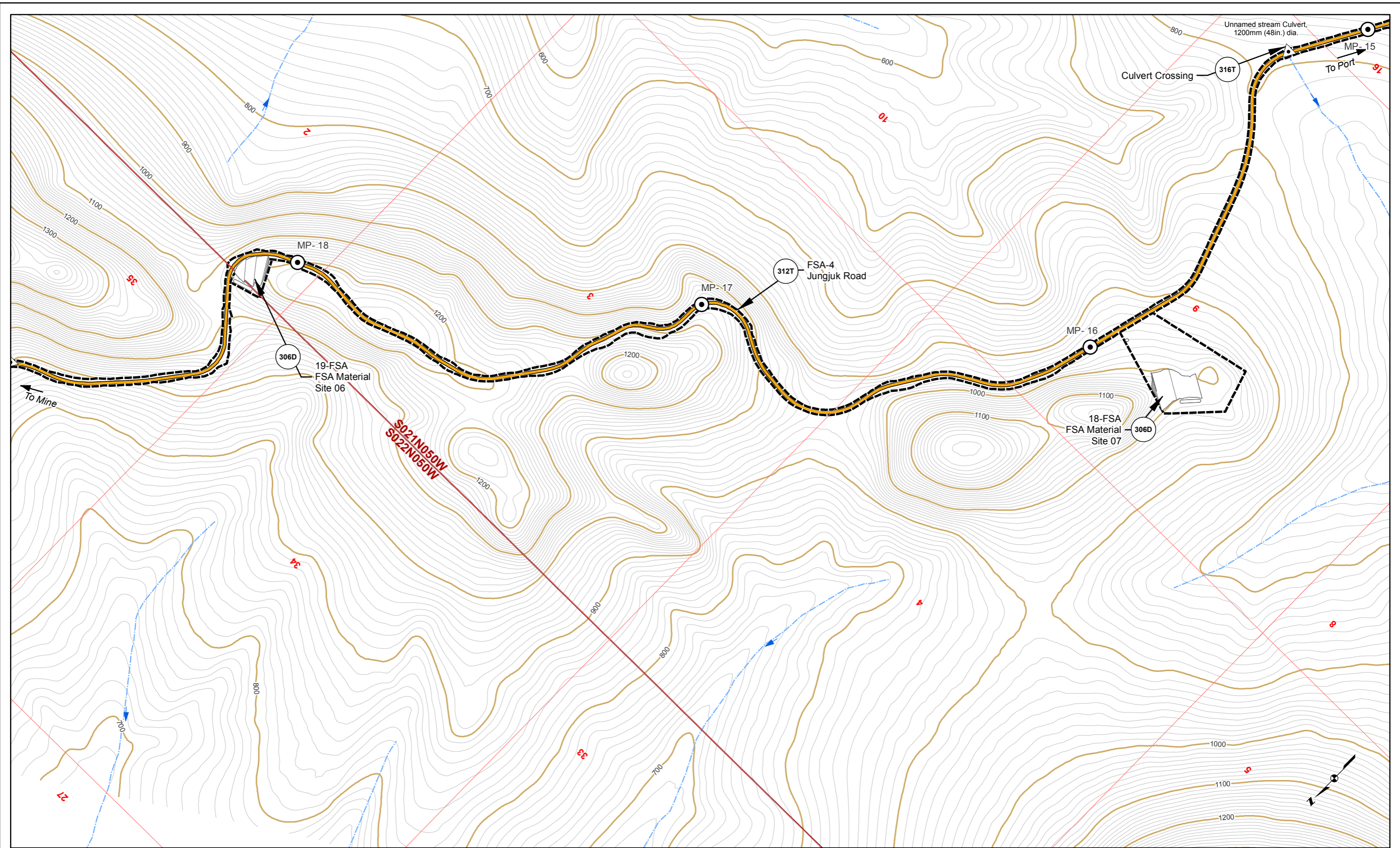


Land Status	Mosaic	Waters	Bridge	10' Contour	Proposed Jungjuk Road
Road Milepost	Upland	Wetlands	Project Disturbance Limit	100' Contour	Unnamed River/Stream
Powerline	Culvert	Stream Flow Direction	Named River/Stream		

Associated Engineering Drawings	
ACAD-Donlin Jungjuk Alignment and toes.dxf (Recon)	

DONLIN GOLD PROJECT	
APPLICANT: Donlin Gold, LLC	
4720 Business Park Blvd., Suite G-25	
Anchorage, Alaska 99503	
NAD 1983 UTM Zone 4N	
SCALE: 1 inch = 1,000 feet	DATE: 8/12/2015

DRAWING TITLE: <b>PLAN VIEW ACCESS ROAD WETLANDS MAP</b>	
FIGURE NO. <b>TA-306A</b>	FILE NO. <b>POA-1995-120</b>

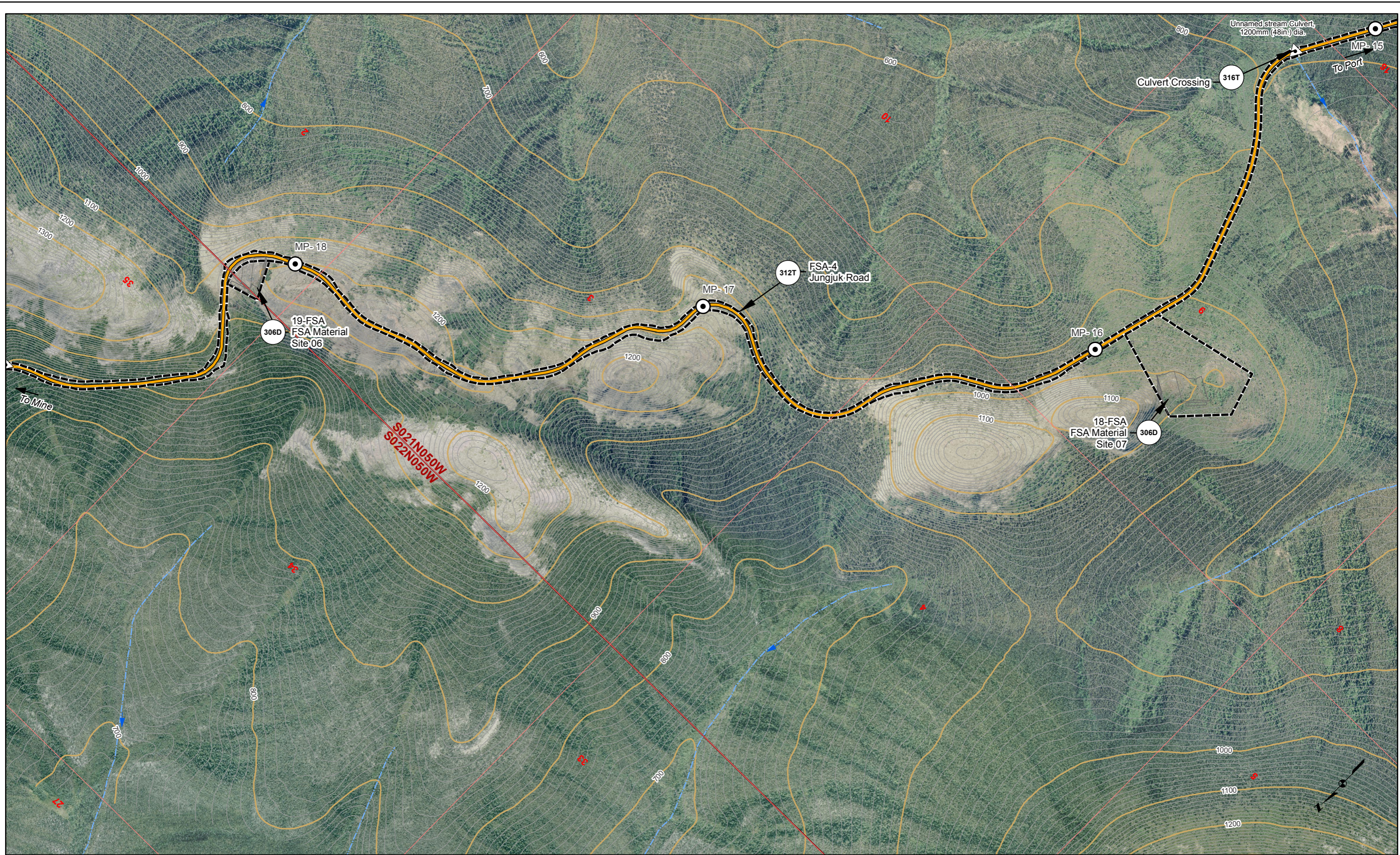


Road Milepost	Bridge	10' Contour	Cross Section	Unnamed River/Stream
Proposed Jungjuk Road	Project Disturbance Limit	100' Contour	Powerline	Named River/Stream
Culvert		Stream Flow Direction	Figure Detail Reference	

Associated Engineering Drawings	
ACAD-Donlin Jungjuk Alignment and toes.dxf (Recon);	
Donlin_Jungjuk_MaterialSites_Rev3_150202 (Recon)	

DONLIN GOLD PROJECT	
APPLICANT: Donlin Gold, LLC	
4720 Business Park Blvd., Suite G-25	
Anchorage, Alaska 99503	
NAD 1983 UTM Zone 4N	
SCALE: 1 inch = 1,000 feet	DATE: 10/27/2015

DRAWING TITLE: <b>PLAN VIEW ACCESS ROAD ENGINEERING MAP</b>
FIGURE NO. <b>TA-306B</b>
FILE NO. <b>POA-1995-120</b>



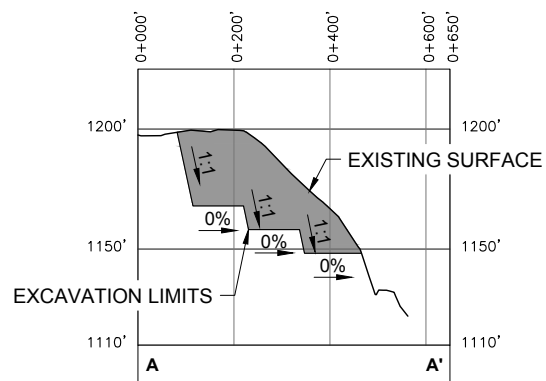
Road Milepost	Bridge	10' Contour	Cross Section	Unnamed River/Stream
Proposed Jungjuk Road	Project Disturbance Limit	100' Contour	Powerline	Named River/Stream
Culvert		Stream Flow Direction	Figure Detail Reference	

Associated Engineering Drawings	
ACAD-Donlin Jungjuk Alignment and toes.dxf (Recon);	
Donlin_Jungjuk_MaterialSites_Rev3_150202 (Recon)	

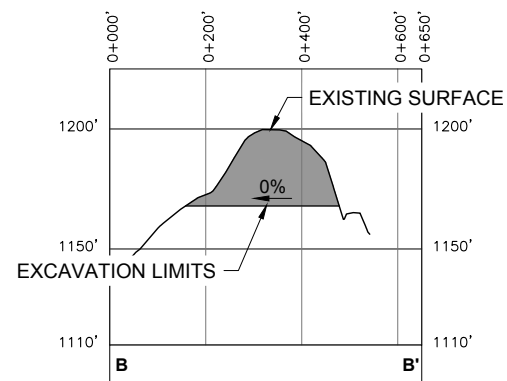
0 500 1,000 Feet

DONLIN GOLD PROJECT	
APPLICANT: Donlin Gold, LLC	
4720 Business Park Blvd., Suite G-25	
Anchorage, Alaska 99503	
NAD 1983 UTM Zone 4N	
SCALE: 1 inch = 1,000 feet	DATE: 10/27/2015

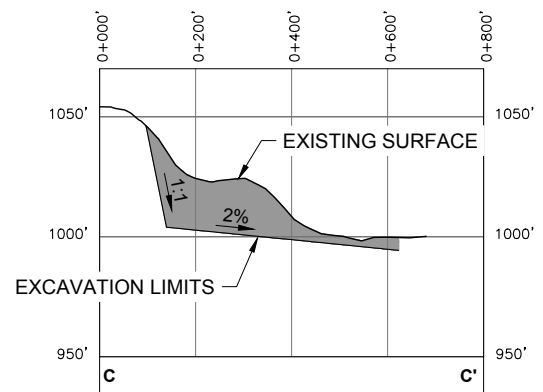
DRAWING TITLE: <b>PLAN VIEW ACCESS ROAD ENGINEERING MAP</b>	
FIGURE NO. <b>TA-306C</b>	FILE NO. <b>POA-1995-120</b>



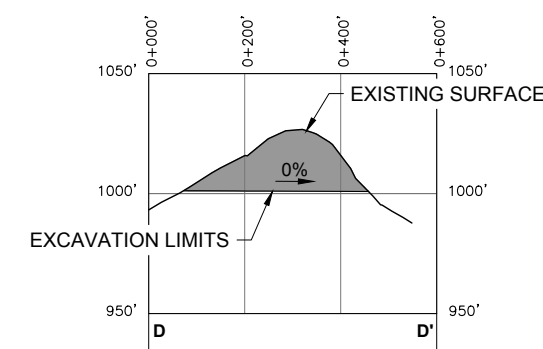
**A-A'**  
306D **CROSS-SECTION A-A'**  
HORIZONTAL SCALE 1" = 400'  
VERTICAL SCALE 1" = 80'



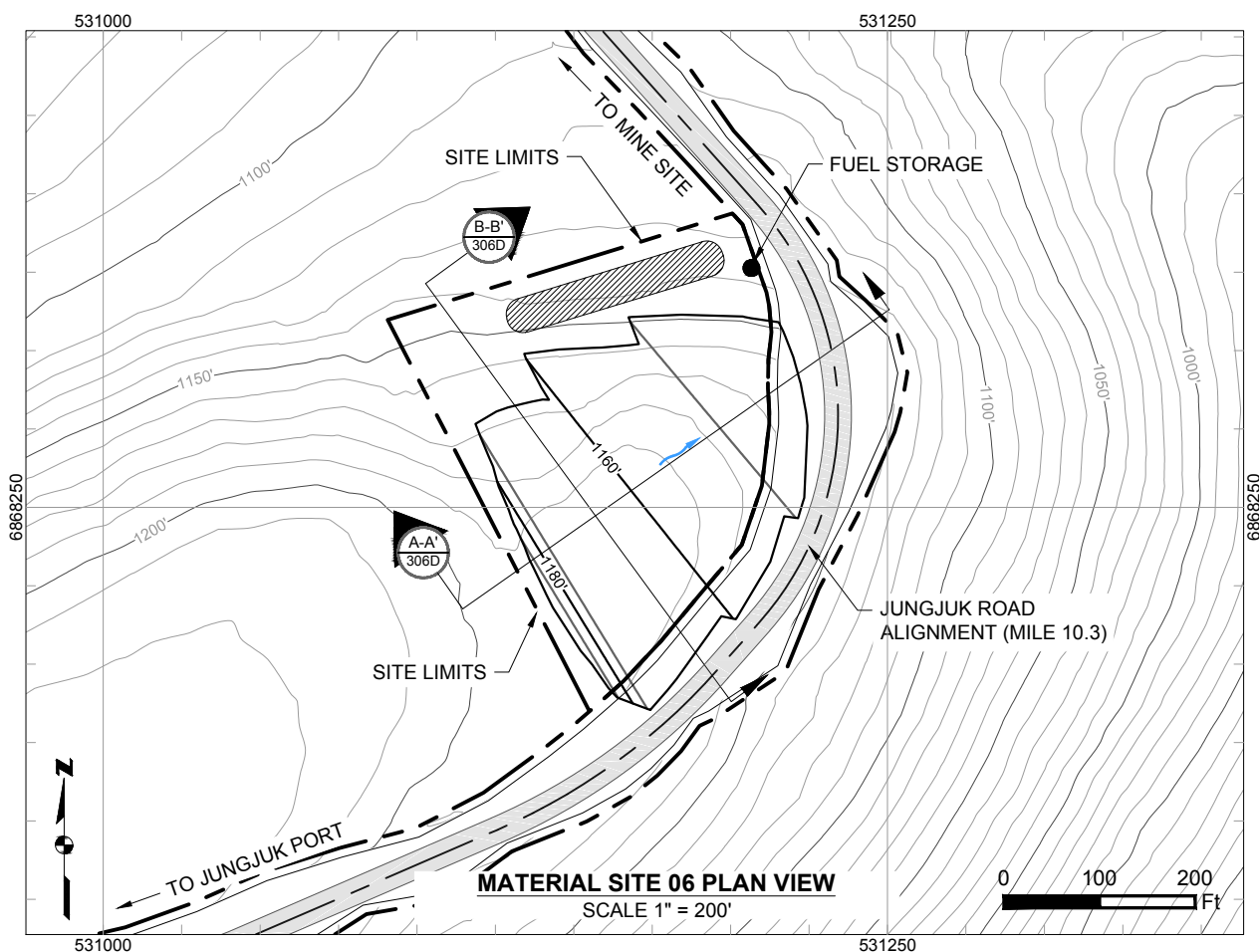
**B-B'**  
306D **CROSS-SECTION B-B'**  
HORIZONTAL SCALE 1" = 400'  
VERTICAL SCALE 1" = 80'



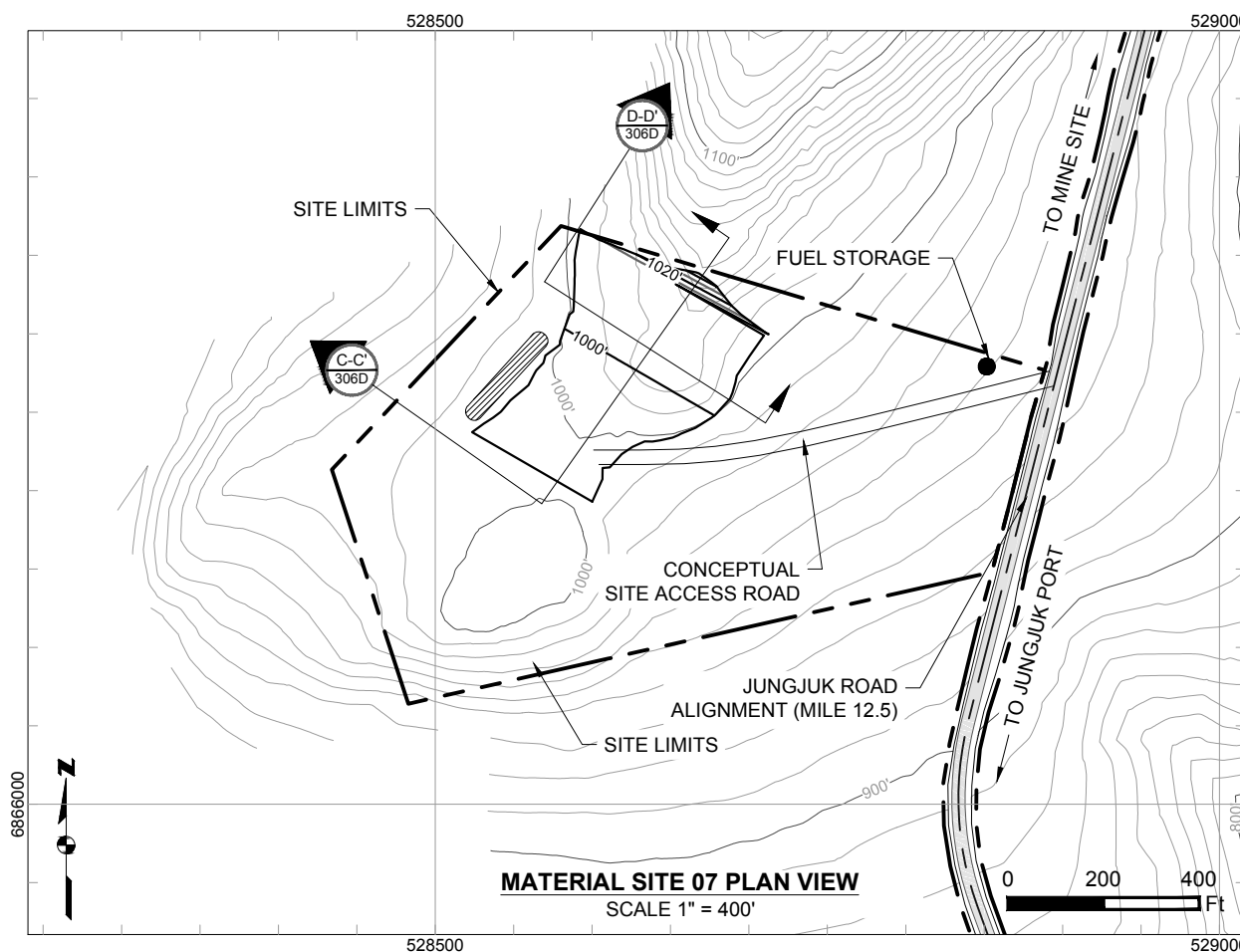
**C-C'**  
306D **CROSS-SECTION C-C'**  
HORIZONTAL SCALE 1" = 400'  
VERTICAL SCALE 1" = 80'



**D-D'**  
306D **CROSS-SECTION D-D'**  
HORIZONTAL SCALE 1" = 400'  
VERTICAL SCALE 1" = 80'



**MATERIAL SITE 06 PLAN VIEW**  
SCALE 1" = 200'



**MATERIAL SITE 07 PLAN VIEW**  
SCALE 1" = 400'

- Existing 10' Contours
- Existing 50' Contours
- Proposed 10' Contours
- Proposed 20' Contours
- Cut Area
- Proposed Drainage Direction
- ▨ Overburden And Growth Media Stockpile
- Temporary Fuel Storage

**Associated Engineering Drawings**

Donlin\_Jungjuk\_MaterialSites\_Rev3\_150202.dwg (RECON) FEB 2015

**DONLIN GOLD PROJECT**  
APPLICANT: Donlin Gold, LLC  
4720 Business Park Blvd., Suite G-25  
Anchorage, Alaska 99503

NAD 1983 UTM Zone 4N

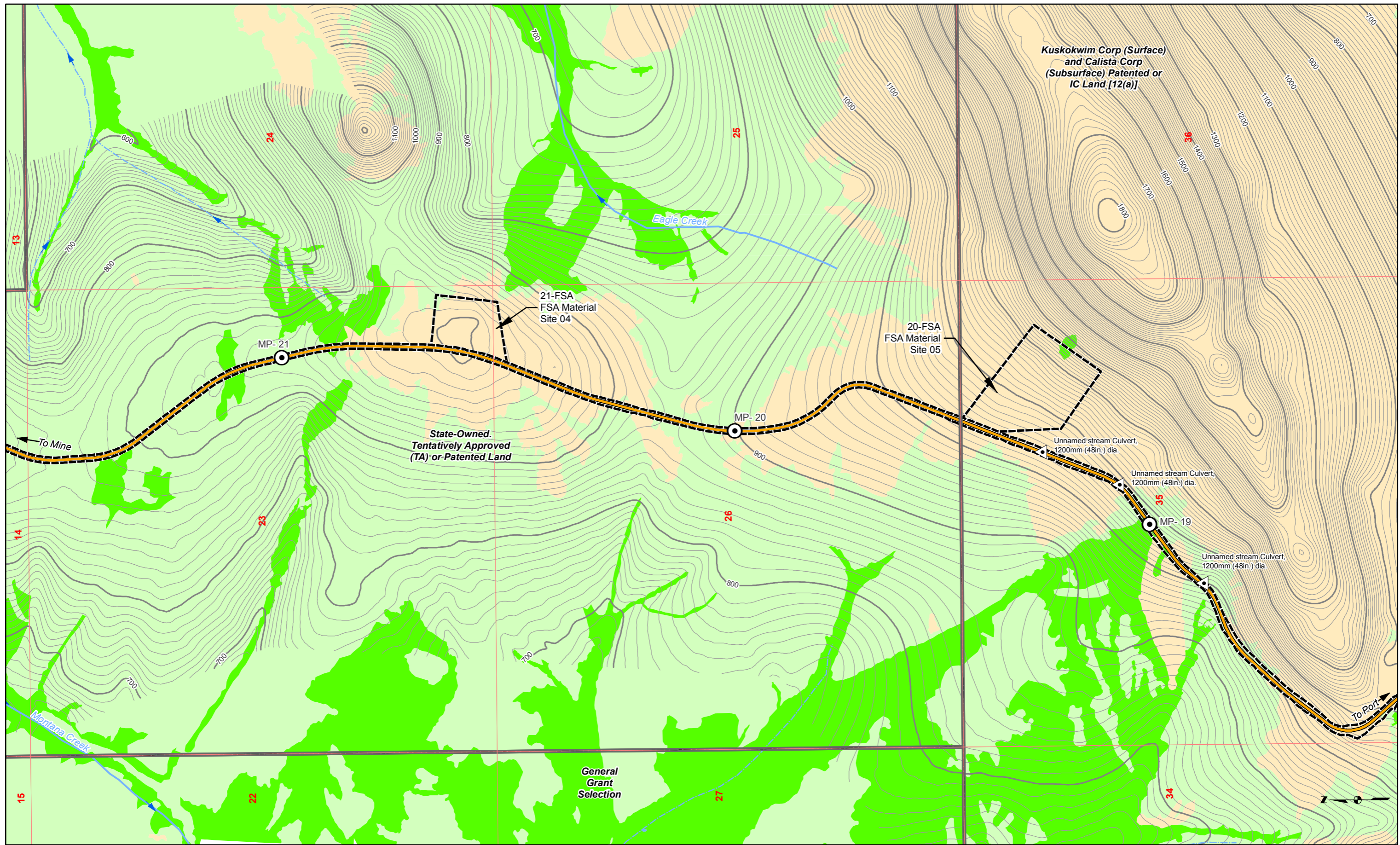
SCALE: AS SHOWN

DATE: 8/11/2015

DRAWING TITLE:  
**MATERIAL SITES 06 & 07**  
**LAYOUTS AND SECTIONS**

FIGURE NO.:  
**TA-306D**

FILE NO.:  
**POA-1995-120**



Kuskokwim Corp (Surface)  
and Calista Corp  
(Subsurface) Patented or  
IC Land [12(a)]

State-Owned  
Tentatively Approved  
(TA) or Patented Land

General  
Grant  
Selection

13

25

MP-20

26

27

MP-21

35

34

14

15

- Land Status
- Mosaic
- Waters
- Bridge
- 10' Contour
- Proposed Jungjuk Road
- 100' Contour
- Unnamed River/Stream
- Named River/Stream
- Road Milepost
- Upland
- Wetlands
- Project Disturbance Limit
- Culvert
- Powerline
- Stream Flow Direction

**Associated Engineering Drawings**

ACAD-Donlin Jungjuk Alignment and toes.dxf (Recon)

0 500 1,000 Feet

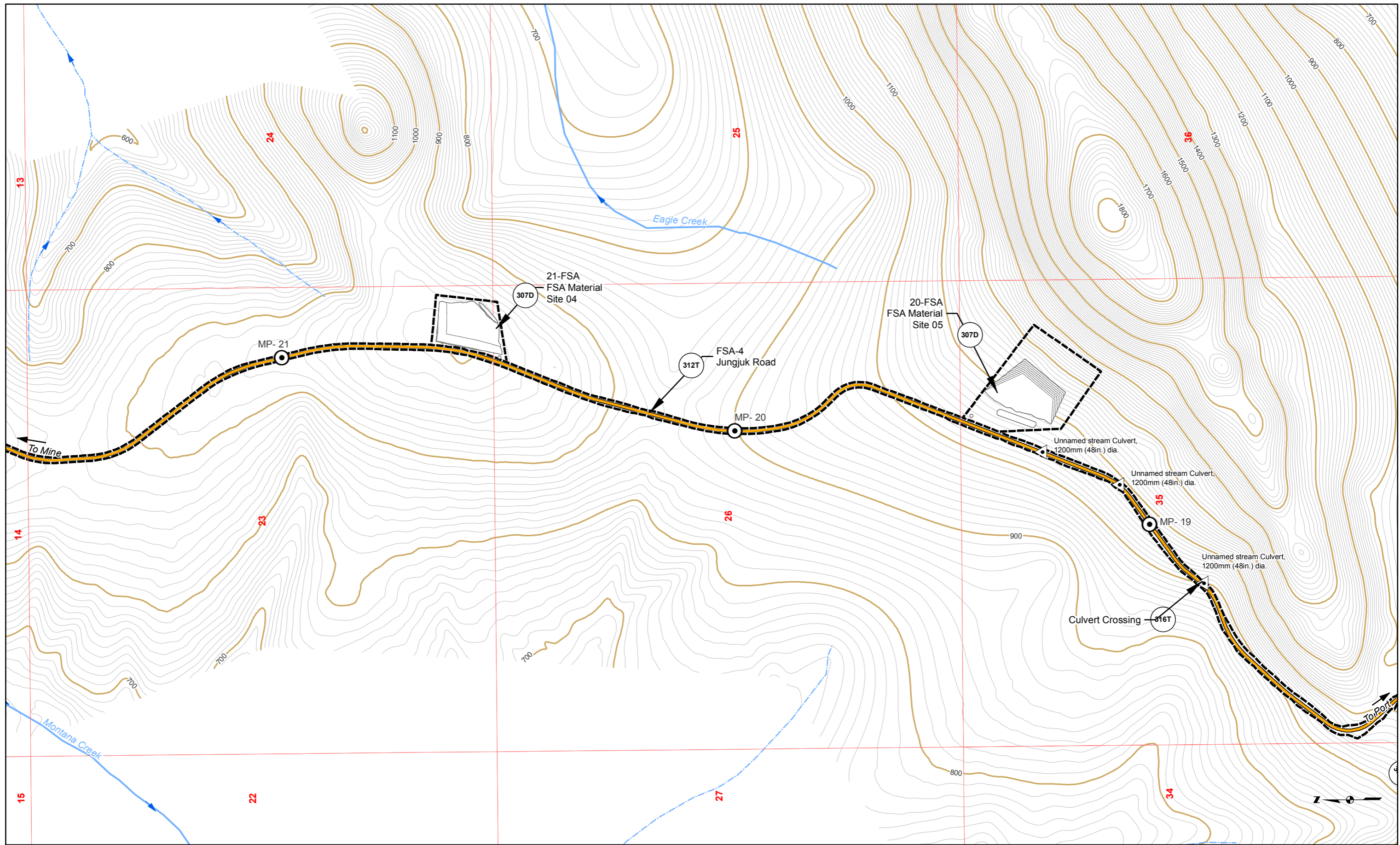
**DONLIN GOLD PROJECT**  
 APPLICANT: Donlin Gold, LLC  
 4720 Business Park Blvd., Suite G-25  
 Anchorage, Alaska 99503

NAD 1983 UTM Zone 4N

SCALE: 1 inch = 1,000 feet DATE: 8/12/2015

DRAWING TITLE: **PLAN VIEW ACCESS ROAD WETLANDS MAP**

FIGURE NO. **TA-307A** FILE NO. **POA-1995-120**



- Road Milepost
- Proposed Jungjuk Road
- Bridge
- Project Disturbance Limit
- Culvert
- 10' Contour
- 100' Contour
- Stream Flow Direction
- Cross Section
- Powerline
- Figure Detail Reference
- Unnamed River/Stream
- Named River/Stream

Associated Engineering Drawings	
ACAD-Donlin Jungjuk Alignment and toes.dxf (Recon);	
Donlin_Jungjuk_MaterialSites_Rev3_150202 (Recon)	

DONLIN GOLD PROJECT	
APPLICANT: Donlin Gold, LLC	
4720 Business Park Blvd., Suite G-25	
Anchorage, Alaska 99503	
NAD 1983 UTM Zone 4N	
SCALE: 1 inch = 1,000 feet	DATE: 8/12/2015

DRAWING TITLE: <b>PLAN VIEW ACCESS ROAD ENGINEERING MAP</b>	
FIGURE NO. <b>TA-307B</b>	FILE NO. <b>POA-1995-120</b>