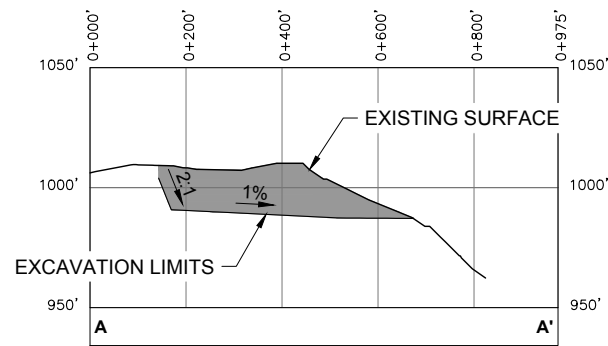


Road Milepost	Bridge	10' Contour	Cross Section	Unnamed River/Stream
Proposed Jungjuk Road	Project Disturbance Limit	100' Contour	Powerline	Named River/Stream
Culvert		Stream Flow Direction	Figure Detail Reference	

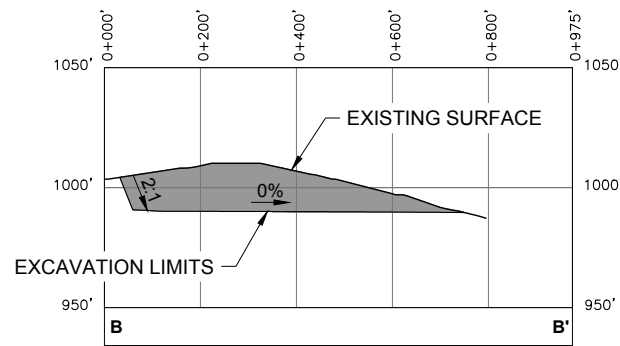
Associated Engineering Drawings	
ACAD-Donlin Jungjuk Alignment and toes.dxf (Recon);	
Donlin_Jungjuk_MaterialSites_Rev3_150202 (Recon)	

DONLIN GOLD PROJECT	
APPLICANT: Donlin Gold, LLC 4720 Business Park Blvd., Suite G-25 Anchorage, Alaska 99503	
NAD 1983 UTM Zone 4N	
SCALE: 1 inch = 1,000 feet	DATE: 8/12/2015

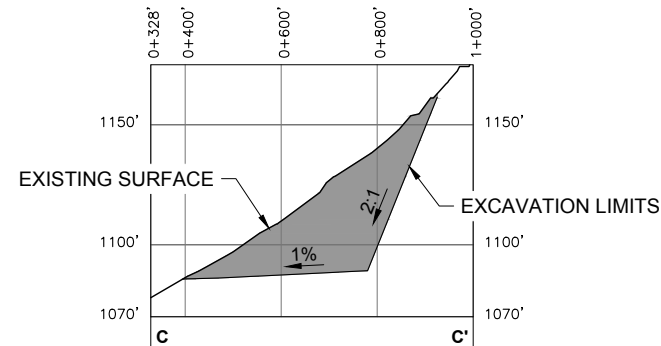
DRAWING TITLE: PLAN VIEW ACCESS ROAD ENGINEERING MAP	
FIGURE NO. TA-307C	FILE NO. POA-1995-120



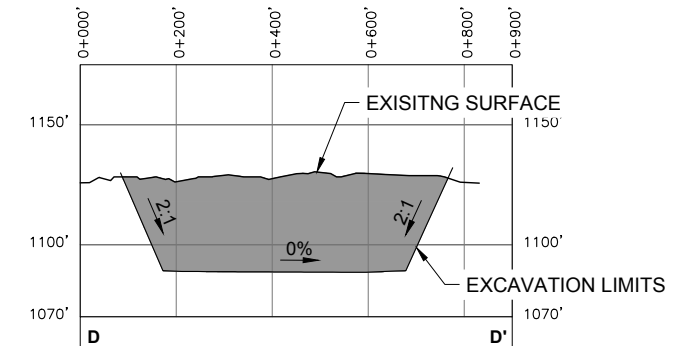
A-A'
307D **CROSS-SECTION A-A'**
HORIZONTAL SCALE 1" = 400'
VERTICAL SCALE 1" = 80'



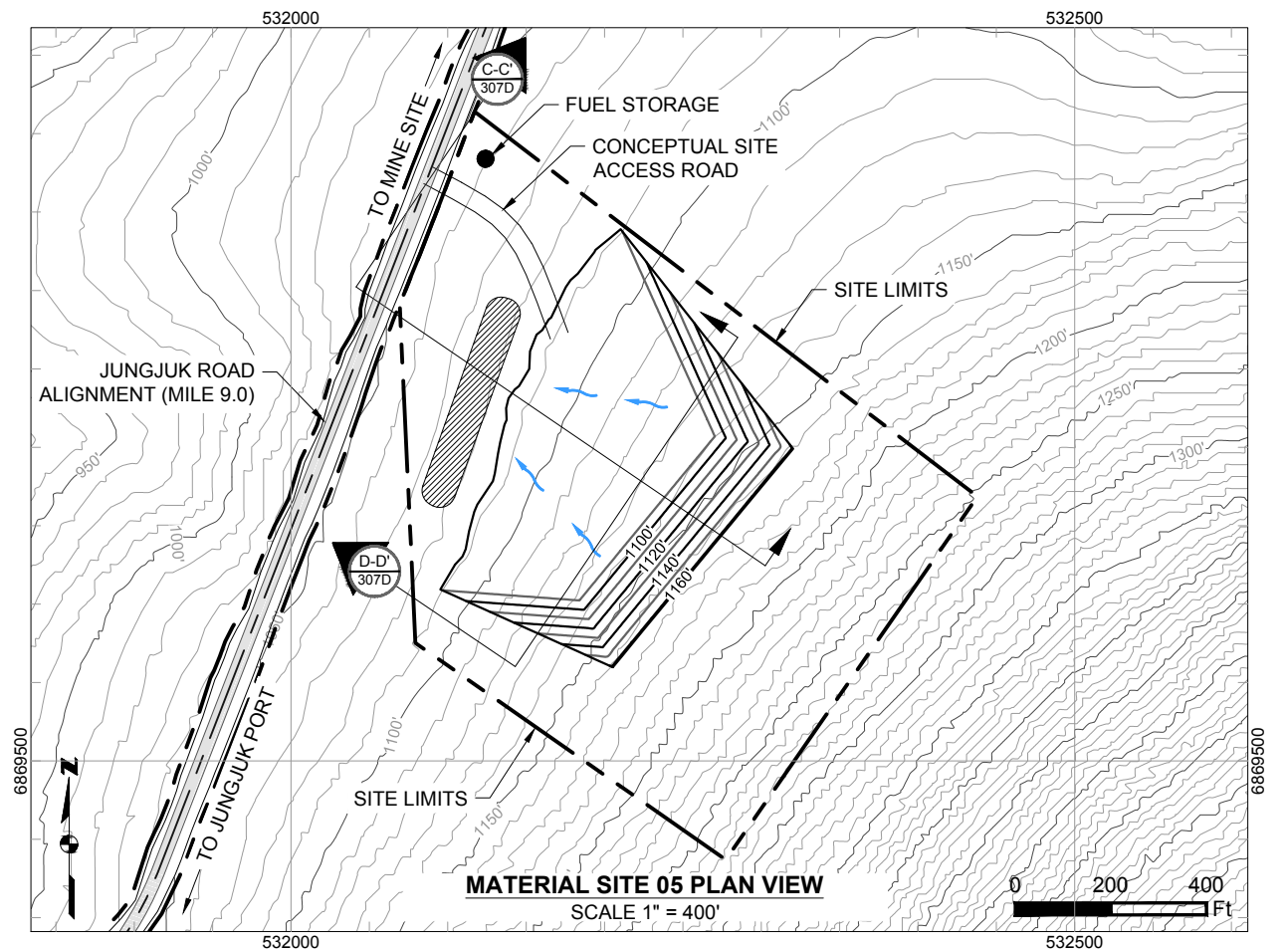
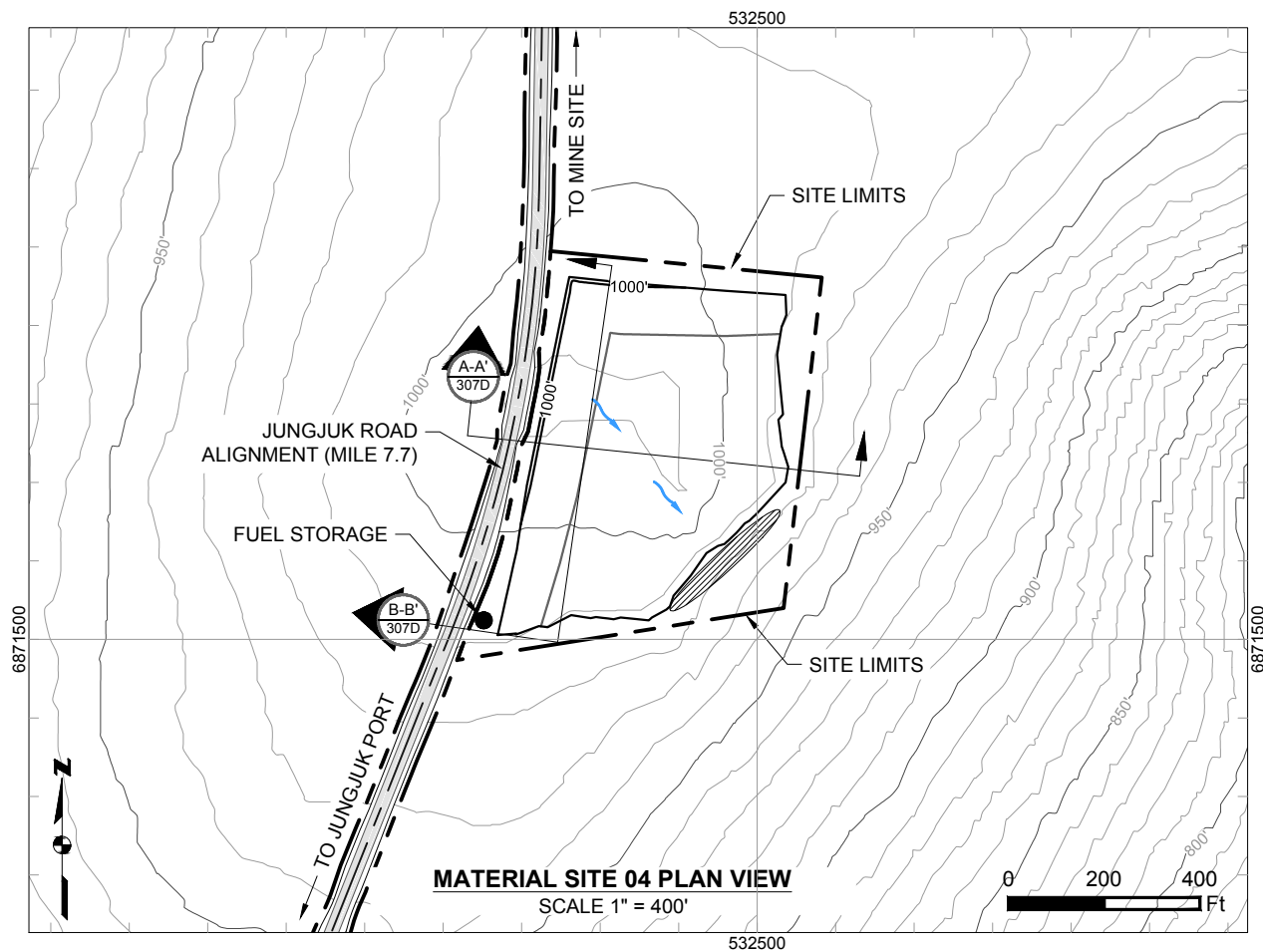
B-B'
307D **CROSS-SECTION B-B'**
HORIZONTAL SCALE 1" = 400'
VERTICAL SCALE 1" = 80'



C-C'
307D **CROSS-SECTION C-C'**
HORIZONTAL SCALE 1" = 400'
VERTICAL SCALE 1" = 80'



D-D'
307D **CROSS-SECTION D-D'**
HORIZONTAL SCALE 1" = 400'
VERTICAL SCALE 1" = 80'



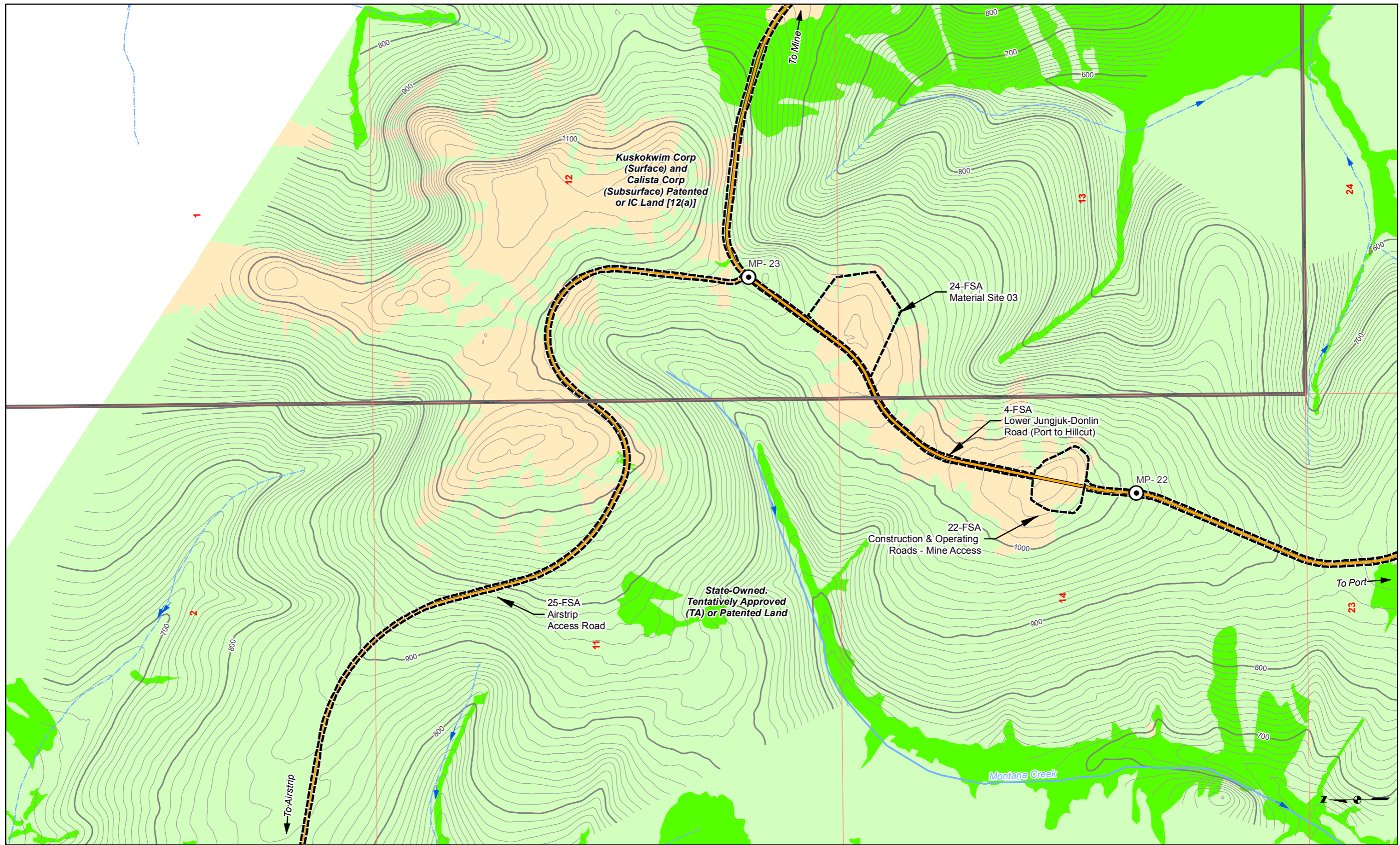
- Existing 10' Contours
- Existing 50' Contours
- Proposed 10' Contours
- Proposed 20' Contours
- Cut Area
- Proposed Drainage Direction
- ▨ Overburden And Growth Media Stockpile
- Temporary Fuel Storage

Associated Engineering Drawings
Donlin_Jungjuk_MaterialSites_Rev3_150202.dwg (RECON) FEB 2015

DONLIN GOLD PROJECT
APPLICANT: Donlin Gold, LLC
4720 Business Park Blvd., Suite G-25
Anchorage, Alaska 99503

NAD 1983 UTM Zone 4N
SCALE: AS SHOWN DATE: 8/11/2015

DRAWING TITLE:
MATERIAL SITES 04 & 05 LAYOUTS AND SECTIONS
FIGURE NO.: TA-307D FILE NO.: POA-1995-120

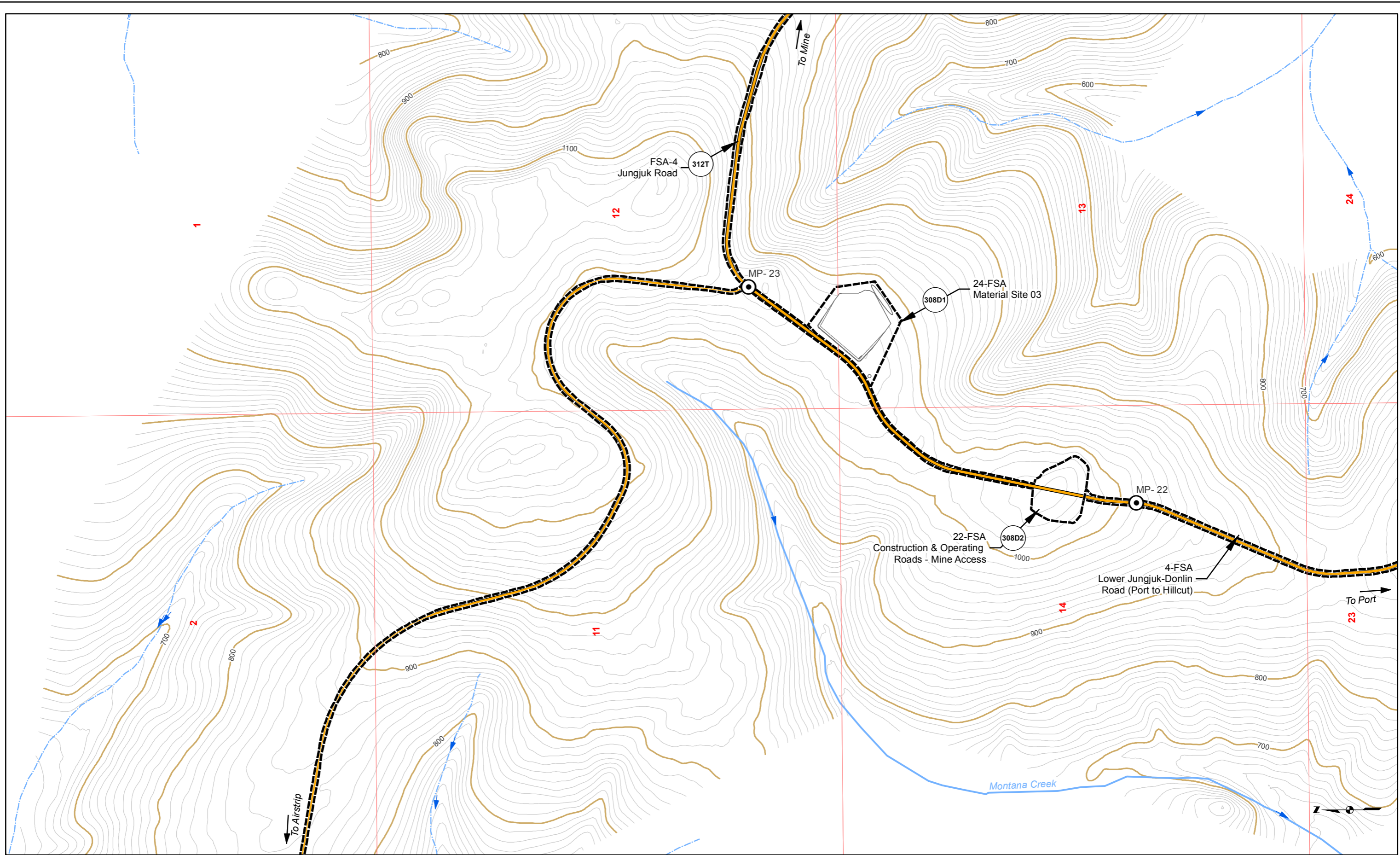


Land Status	Mosaic	Waters	Bridge	10' Contour	Proposed Jungjuk Road
Road Milepost	Upland	Wetlands	Project Disturbance Limit	100' Contour	Unnamed River/Stream
Powerline	Culvert	Stream Flow Direction	Named River/Stream		

Associated Engineering Drawings	
ACAD-Donlin Jungjuk Alignment and toes.dxf (Recon)	
A1-166549-80-13-006.dwg (AMEC)	

DONLIN GOLD PROJECT	
APPLICANT: Donlin Gold, LLC 4720 Business Park Blvd., Suite G-25 Anchorage, Alaska 99503	
NAD 1983 UTM Zone 4N	
SCALE: 1 inch = 1,000 feet	DATE: 10/2/2015

DRAWING TITLE: PLAN VIEW ACCESS ROAD WETLANDS MAP	
FIGURE NO. TA-308A	FILE NO. POA-1995-120

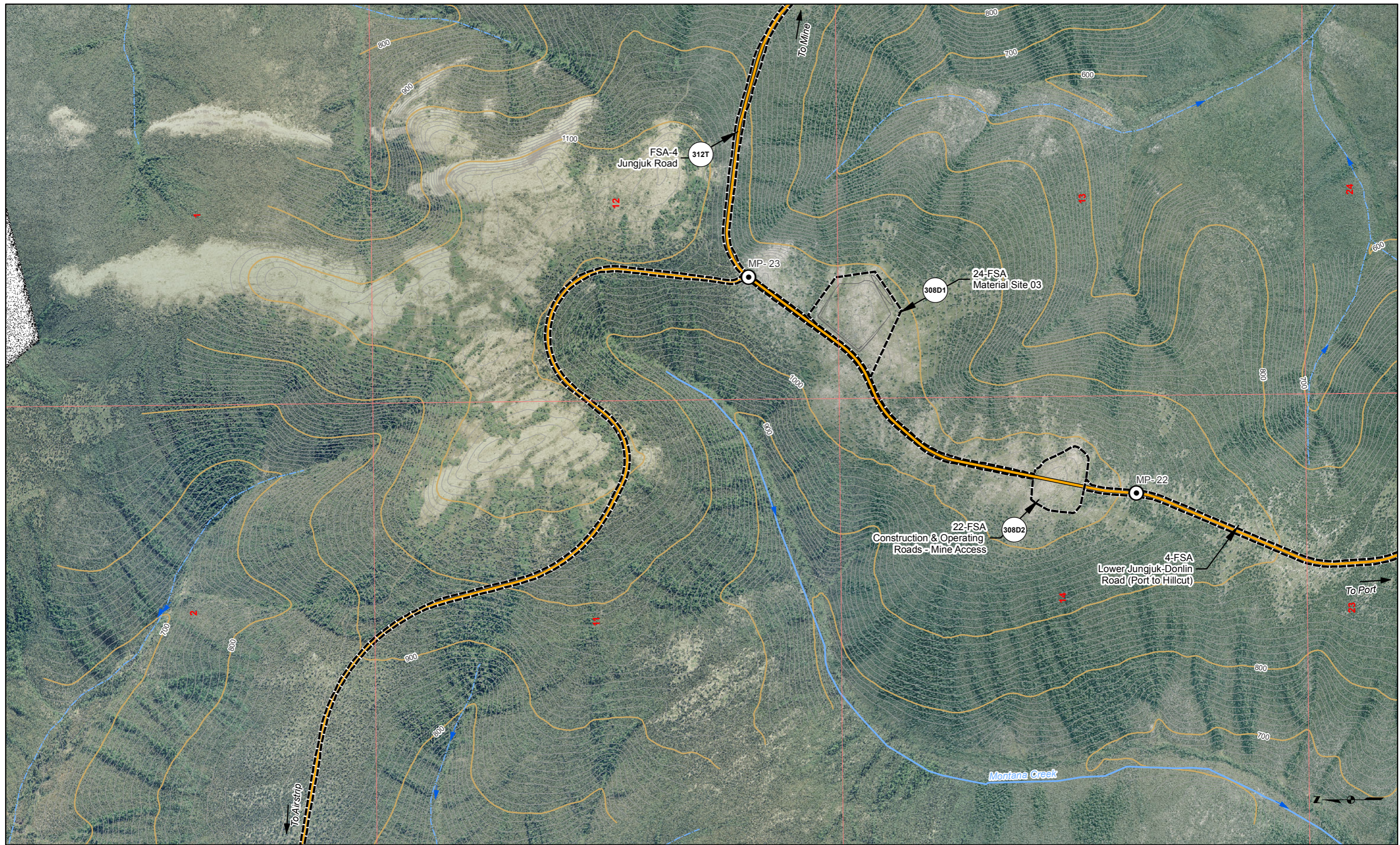


Road Milepost	Bridge	10' Contour	Cross Section	Unnamed River/Stream
Proposed Jungjuk Road	Project Disturbance Limit	100' Contour	Powerline	Named River/Stream
Culvert	Stream Flow Direction	Figure Detail Reference		

Associated Engineering Drawings	
ACAD-Donlin Jungjuk Alignment and toes.dxf (Recon);	
Donlin_Jungjuk_MaterialSites_Rev3_150202 (Recon);A1-166549-80-13-006.dwg (AMEC)	

DONLIN GOLD PROJECT	
APPLICANT: Donlin Gold, LLC	
4720 Business Park Blvd., Suite G-25	
Anchorage, Alaska 99503	
NAD 1983 UTM Zone 4N	
SCALE: 1 inch = 1,000 feet	DATE: 10/27/2015

DRAWING TITLE: PLAN VIEW ACCESS ROAD ENGINEERING MAP	
FIGURE NO. TA-308B	FILE NO. POA-1995-120



- Road Milepost
- 🚧 Bridge
- 🚧 Project Disturbance Limit
- △ Culvert
- 10' Contour
- 100' Contour
- ➡ Stream Flow Direction
- Cross Section
- P— Powerline
- 🌊 Unnamed River/Stream
- 🌊 Named River/Stream
- ⊙ Figure Detail Reference

Associated Engineering Drawings	
ACAD-Donlin Jungjuk Alignment and toes.dxf (Recon);	
Donlin_Jungjuk_MaterialSites_Rev3_150202 (Recon);A1-166549-80-13-006.dwg (AMEC)	

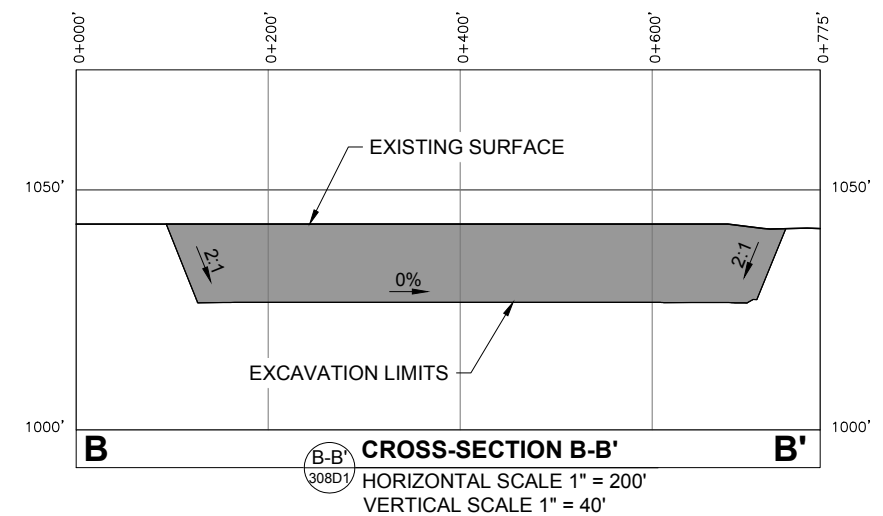
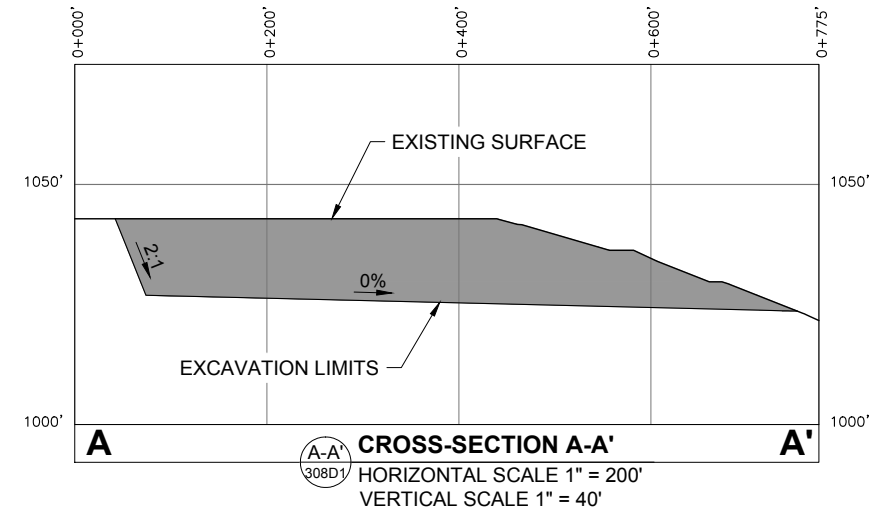
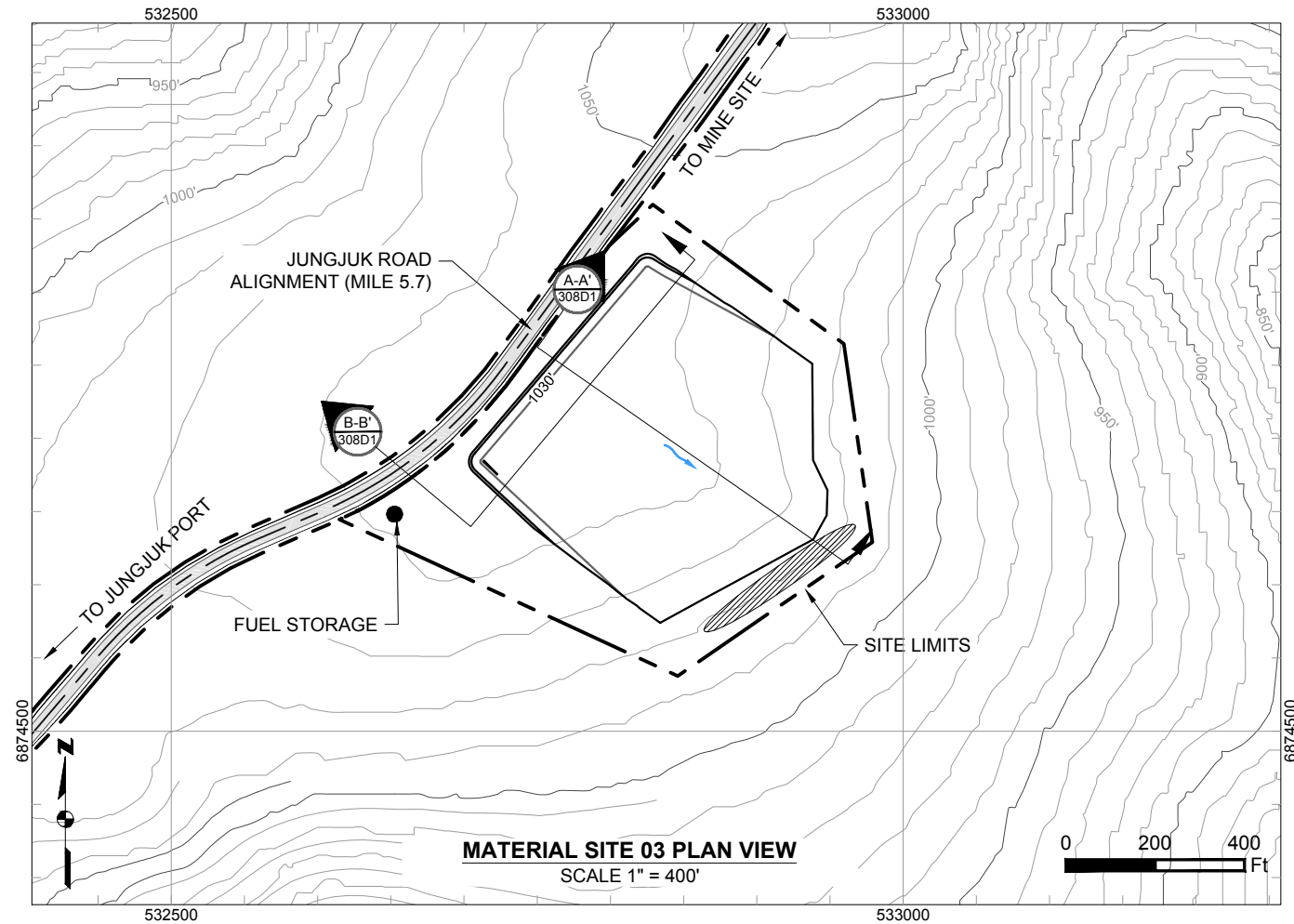
DONLIN GOLD PROJECT
 APPLICANT: Donlin Gold, LLC
 4720 Business Park Blvd., Suite G-25
 Anchorage, Alaska 99503

NAD 1983 UTM Zone 4N

SCALE: 1 inch = 1,000 feet DATE: 10/27/2015

DRAWING TITLE: **PLAN VIEW ACCESS ROAD ENGINEERING MAP**

FIGURE NO. **TA-308C** FILE NO. **POA-1995-120**



- | | |
|-----------------------------|---|
| — Existing 10' Contours | ■ Cut Area |
| —550— Existing 50' Contours | — Proposed Drainage Direction |
| — Proposed 10' Contours | ▨ Overburden And Growth Media Stockpile |
| —550— Proposed 20' Contours | ● Temporary Fuel Storage |

Associated Engineering Drawings

Donlin_Jungjuk_MaterialSites_Rev3_150202.dwg (RECON) FEB 2015

DONLIN GOLD PROJECT
APPLICANT: Donlin Gold, LLC
4720 Business Park Blvd., Suite G-25
Anchorage, Alaska 99503

NAD 1983 UTM Zone 4N
SCALE: AS SHOWN

DATE: 8/11/2015

DRAWING TITLE:

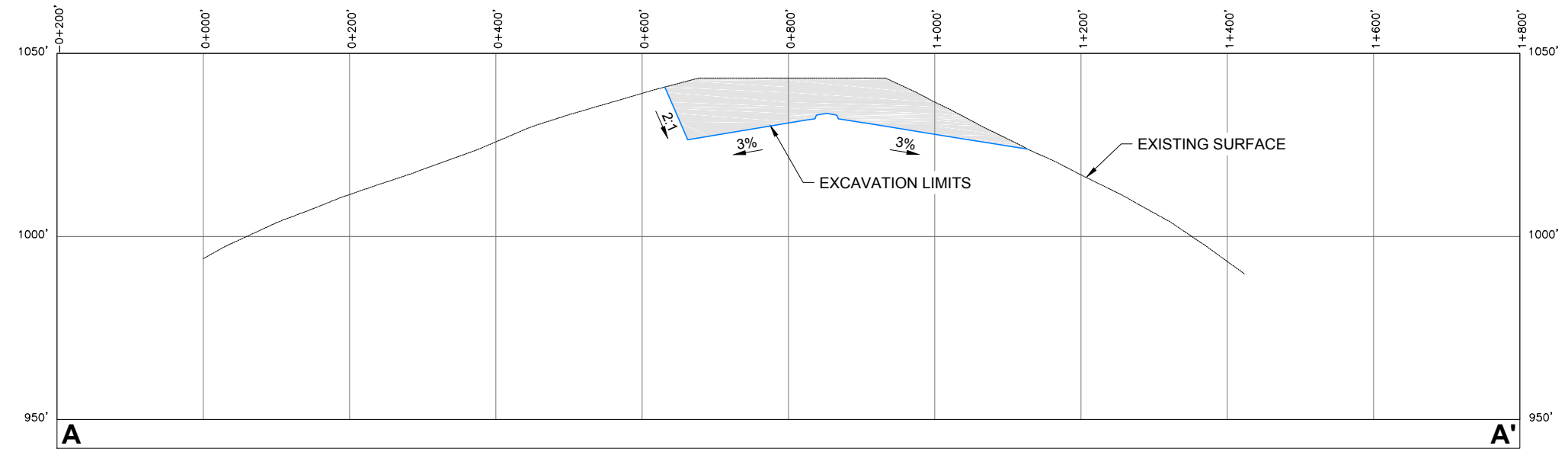
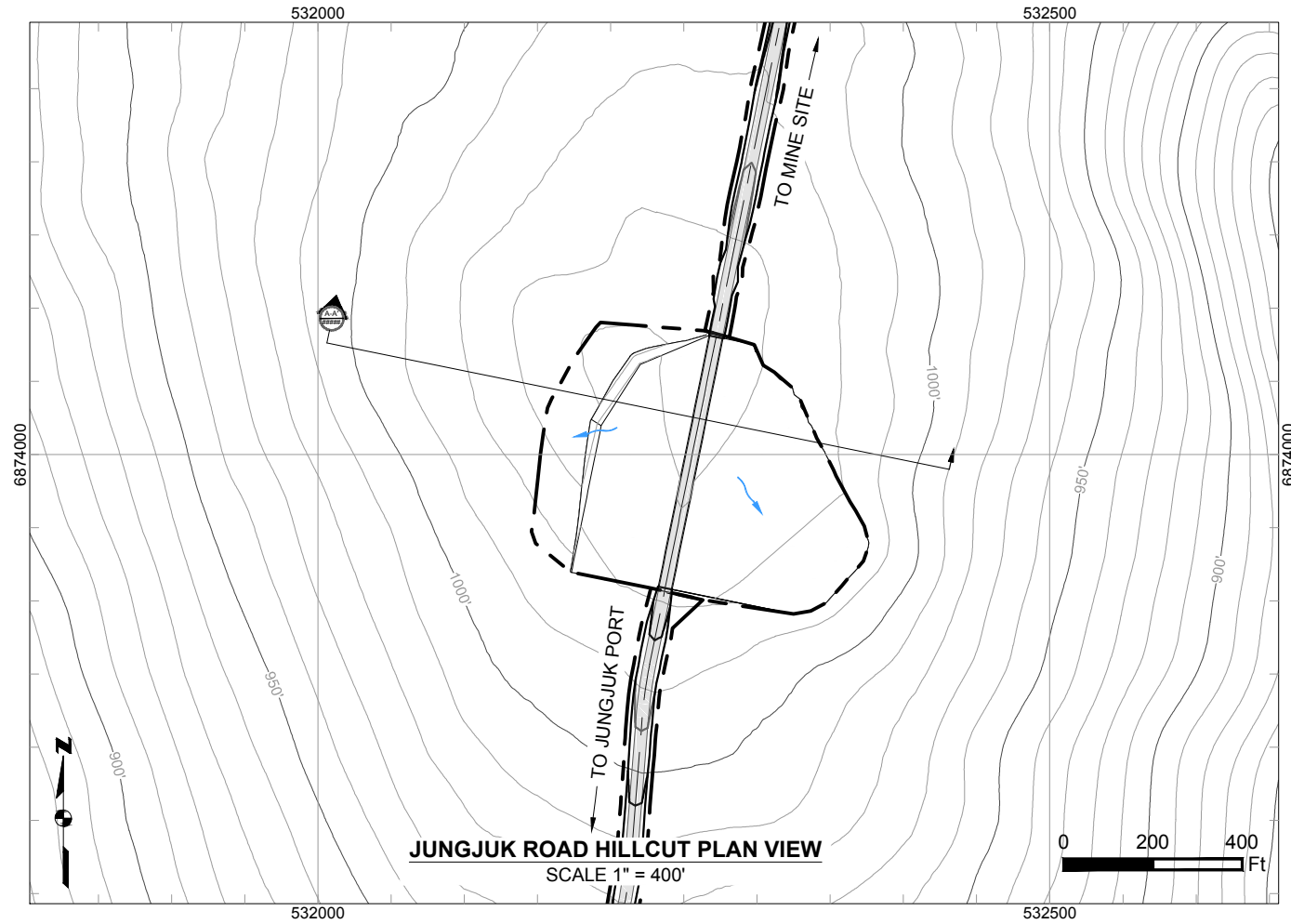
**MATERIAL SITE 03
LAYOUT AND SECTIONS**

FIGURE NO.

TA-308D1

FILE NO.

POA-1995-120



CROSS-SECTION A-A'
 HORIZONTAL SCALE 1" = 200'
 VERTICAL SCALE 1" = 40'

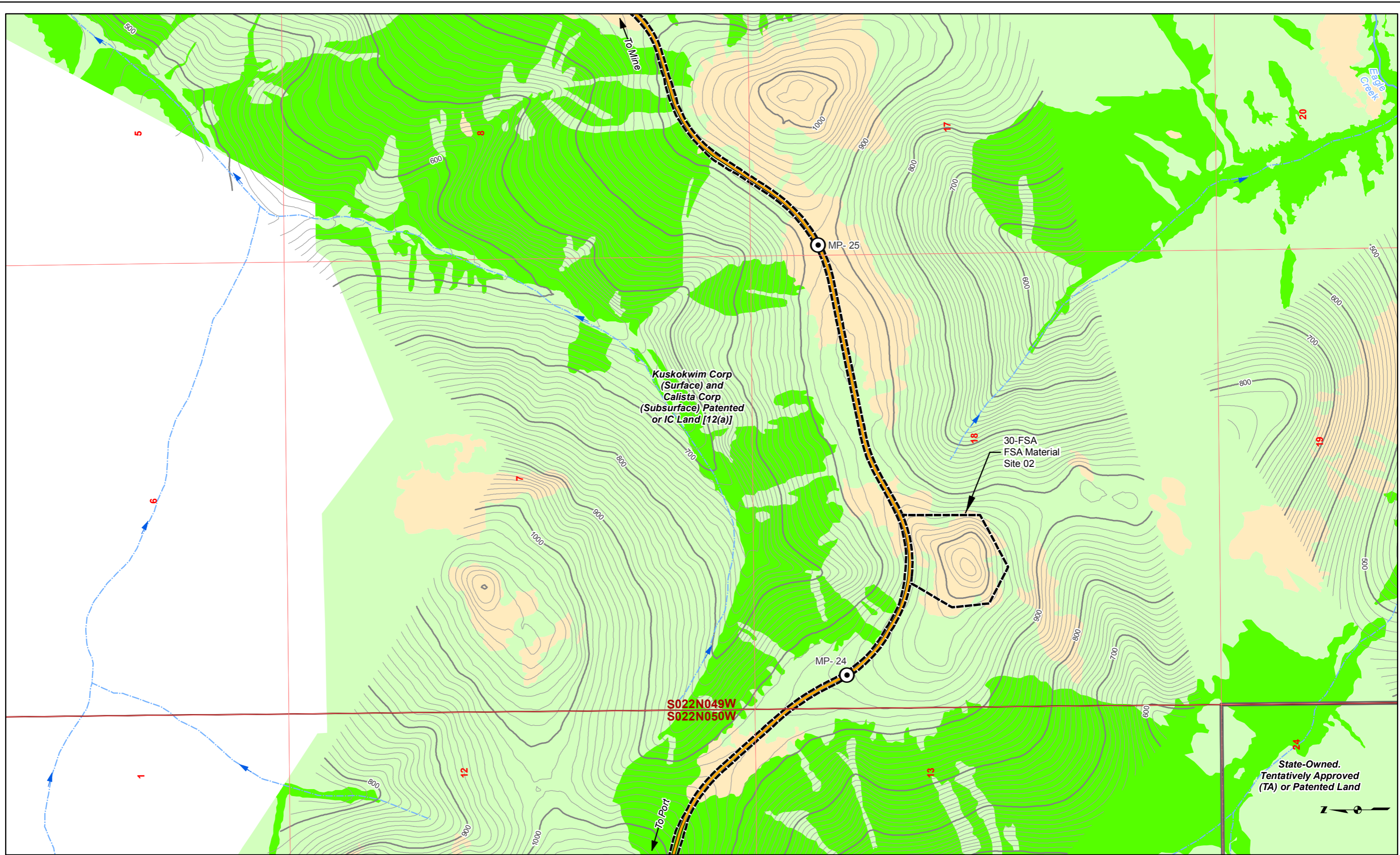
- Existing 10' Contours
- Existing 50' Contours
- Proposed 10' Contours
- Proposed 20' Contours
- Cut Area
- Proposed Drainage Direction

Associated Engineering Drawings

DONLIN GOLD PROJECT
 APPLICANT: Donlin Gold, LLC
 4720 Business Park Blvd., Suite G-25
 Anchorage, Alaska 99503
 NAD 1983 UTM Zone 4N
 SCALE: AS SHOWN DATE: 8/18/2015

DRAWING TITLE:
JUNGJUK ROAD HILLCUT
 FIGURE NO. **TA-308D2** FILE NO. **POA-1995-120**

PATH: C:\Users\mlengiewicz\Dropbox\Donlin\181202_010_mapping_404_support\revision_a\TA_Material_sites.dwg

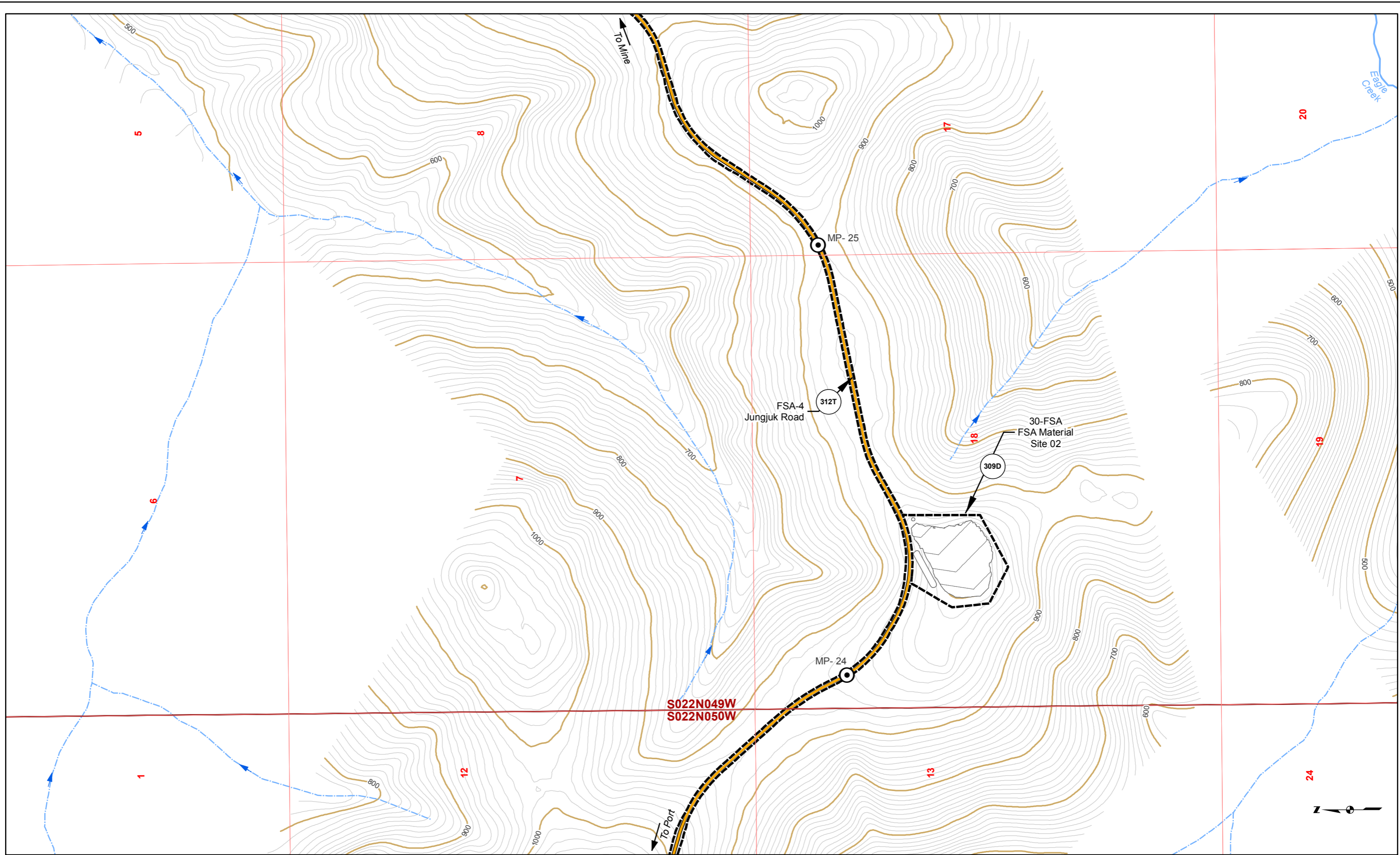


Land Status	Mosaic	Waters	Bridge	10' Contour	Proposed Jungjuk Road
Road Milepost	Upland	Wetlands	Project Disturbance Limit	100' Contour	Unnamed River/Stream
Powerline	Culvert	Stream Flow Direction	Named River/Stream		

Associated Engineering Drawings	
ACAD-Donlin Jungjuk Alignment and toes.dxf (Recon)	

DONLIN GOLD PROJECT	
APPLICANT: Donlin Gold, LLC 4720 Business Park Blvd., Suite G-25 Anchorage, Alaska 99503	
NAD 1983 UTM Zone 4N	
SCALE: 1 inch = 1,000 feet	DATE: 8/12/2015

DRAWING TITLE: PLAN VIEW ACCESS ROAD WETLANDS MAP	
FIGURE NO. TA-309A	FILE NO. POA-1995-120



- Road Milepost
- Proposed Jungjuk Road
- Bridge
- Project Disturbance Limit
- Culvert
- 10' Contour
- 100' Contour
- Stream Flow Direction
- Cross Section
- Powerline
- Figure Detail Reference
- Unnamed River/Stream
- Named River/Stream

Associated Engineering Drawings	
ACAD-Donlin Jungjuk Alignment and toes.dxf (Recon);	
Donlin_Jungjuk_MaterialSites_Rev3_150202 (Recon)	

DONLIN GOLD PROJECT	
APPLICANT: Donlin Gold, LLC	
4720 Business Park Blvd., Suite G-25	
Anchorage, Alaska 99503	
NAD 1983 UTM Zone 4N	
SCALE: 1 inch = 1,000 feet	DATE: 8/12/2015

DRAWING TITLE: PLAN VIEW ACCESS ROAD ENGINEERING MAP	
FIGURE NO. TA-309B	FILE NO. POA-1995-120