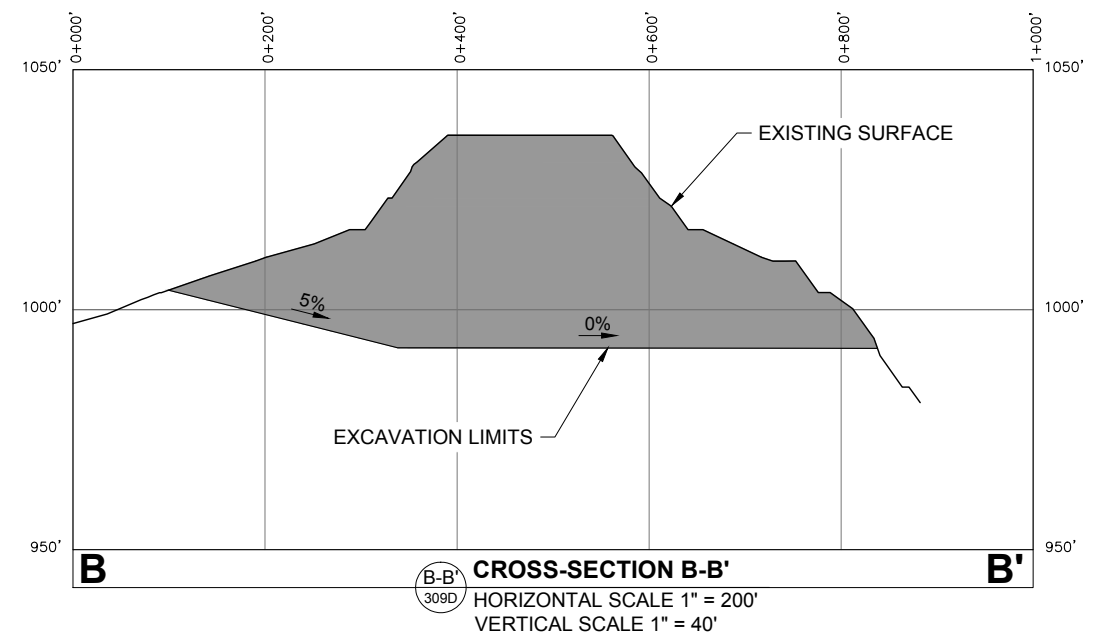
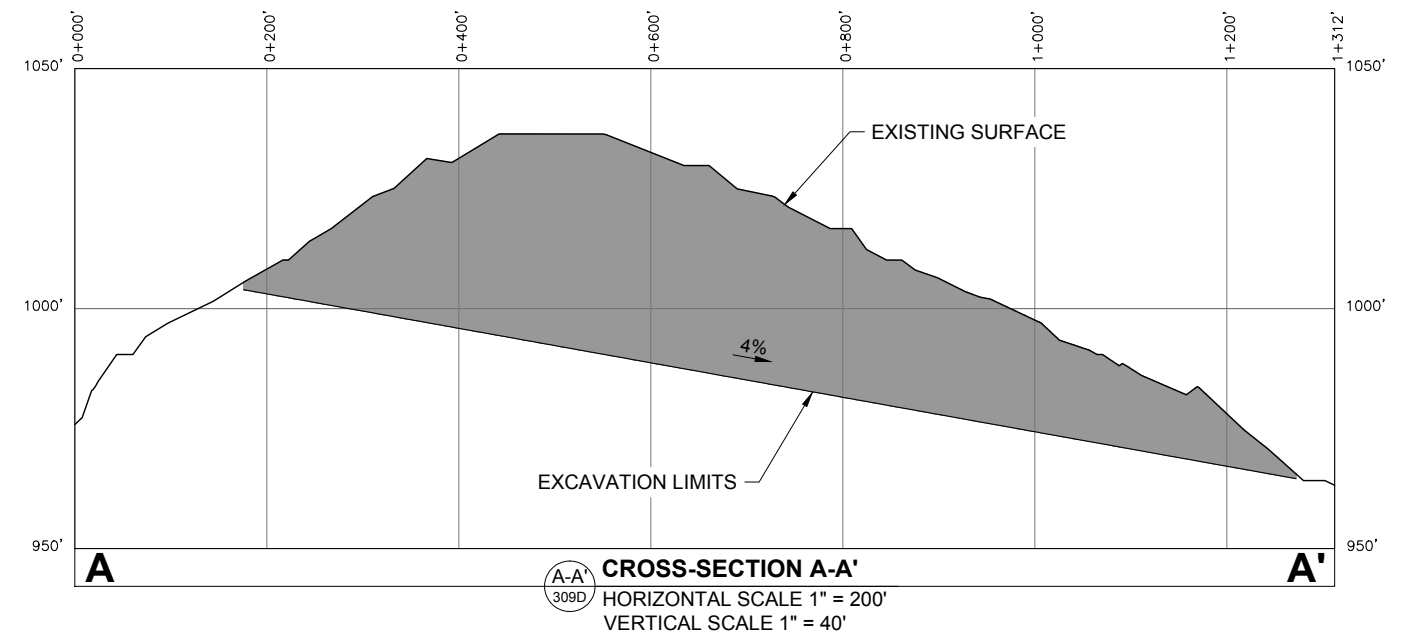
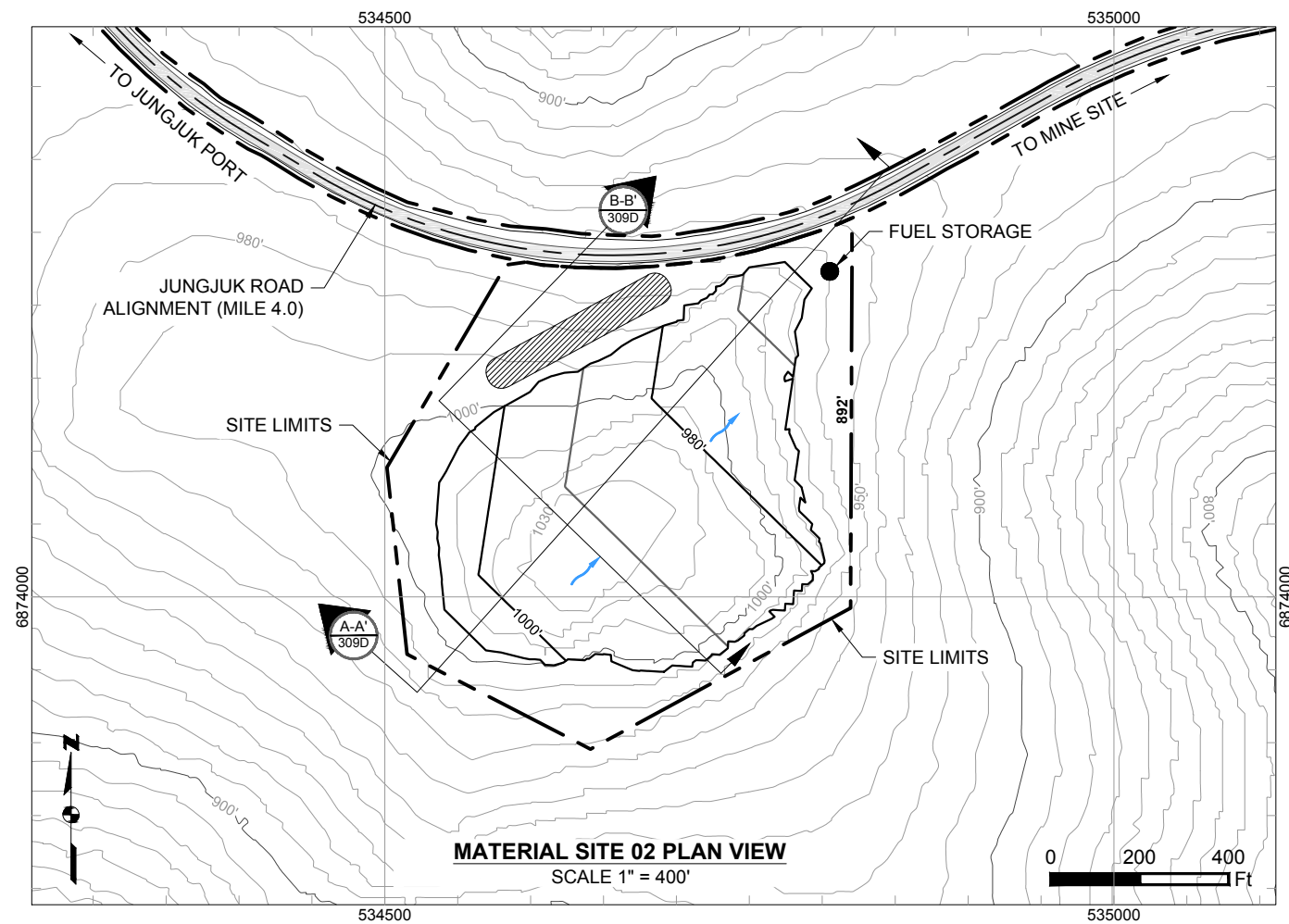


- Road Milepost
- Proposed Jungjuk Road
- Bridge
- Project Disturbance Limit
- Culvert
- 10' Contour
- 100' Contour
- Stream Flow Direction
- Cross Section
- Powerline
- Figure Detail Reference
- Unnamed River/Stream
- Named River/Stream

Associated Engineering Drawings	
ACAD-Donlin Jungjuk Alignment and toes.dxf (Recon);	
Donlin_Jungjuk_MaterialSites_Rev3_150202 (Recon)	

DONLIN GOLD PROJECT	
APPLICANT: Donlin Gold, LLC	
4720 Business Park Blvd., Suite G-25	
Anchorage, Alaska 99503	
NAD 1983 UTM Zone 4N	
SCALE: 1 inch = 1,000 feet	DATE: 8/12/2015

DRAWING TITLE: PLAN VIEW ACCESS ROAD ENGINEERING MAP	
FIGURE NO. TA-309C	FILE NO. POA-1995-120



- | | |
|------------------------------|---|
| — Existing 10' Contours | ■ Cut Area |
| —550'— Existing 50' Contours | — Proposed Drainage Direction |
| — Proposed 10' Contours | ▨ Overburden And Growth Media Stockpile |
| —550'— Proposed 20' Contours | ● Temporary Fuel Storage |

Associated Engineering Drawings

Donlin_Jungjuk_MaterialSites_Rev3_150202.dwg (RECON) FEB 2015

DONLIN GOLD PROJECT
 APPLICANT: Donlin Gold, LLC
 4720 Business Park Blvd., Suite G-25
 Anchorage, Alaska 99503

NAD 1983 UTM Zone 4N

SCALE: AS SHOWN

DATE: 8/11/2015

DRAWING TITLE:

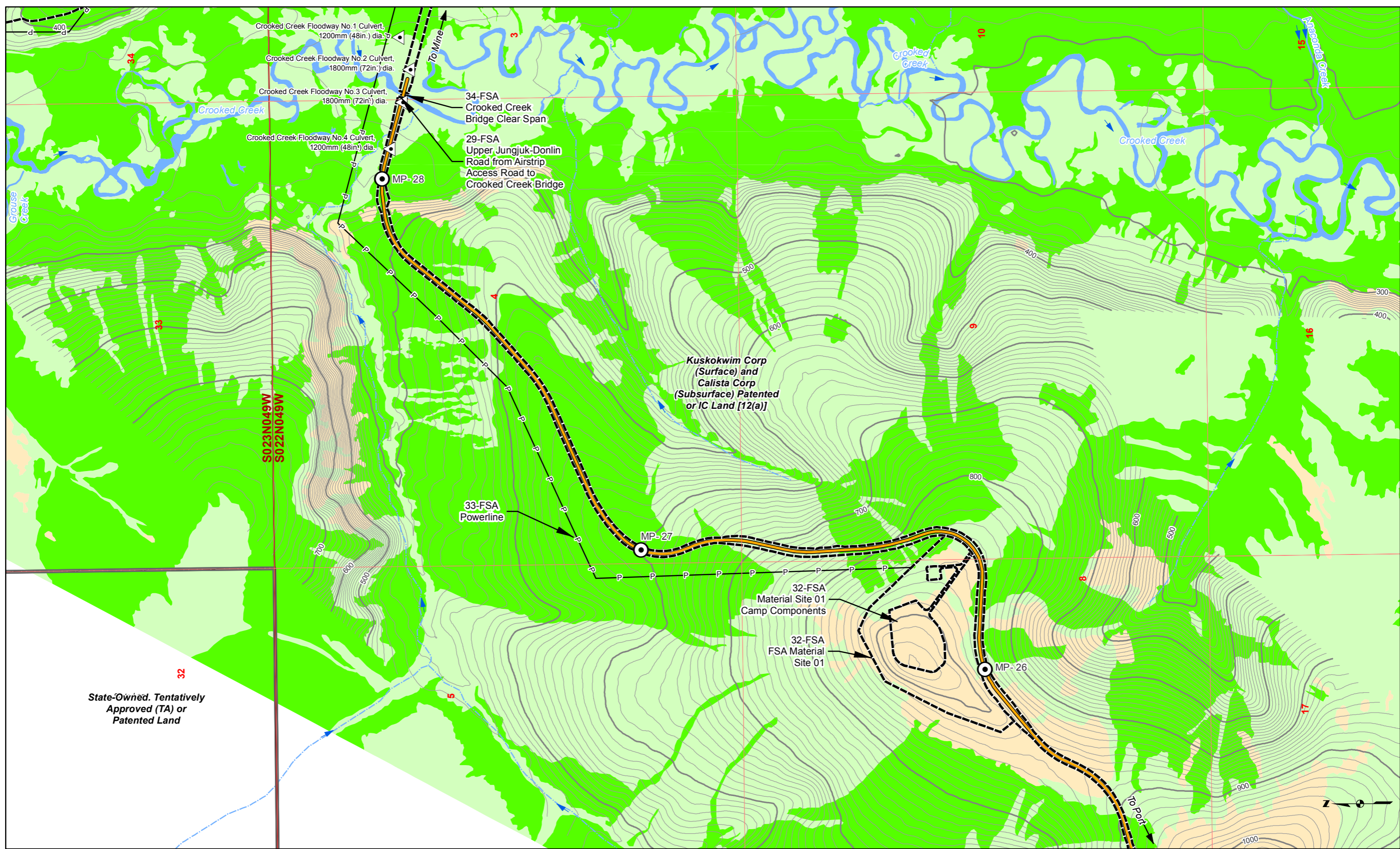
**MATERIAL SITE 02
 LAYOUT AND SECTIONS**

FIGURE NO.

TA-309D

FILE NO.

POA-1995-120



- | | | | | | |
|---------------|---------------|----------|---------------------------|-----------------------|-----------------------|
| Land Status | Mosaic | Waters | Bridge | 10' Contour | Proposed Jungjuk Road |
| Road Milepost | Upland | Wetlands | Project Disturbance Limit | 100' Contour | Unnamed River/Stream |
| | -P- Powerline | Culvert | | Stream Flow Direction | Named River/Stream |

Associated Engineering Drawings

ACAD-Donlin Jungjuk Alignment and toes.dxf (Recon)

0 500 1,000 Feet

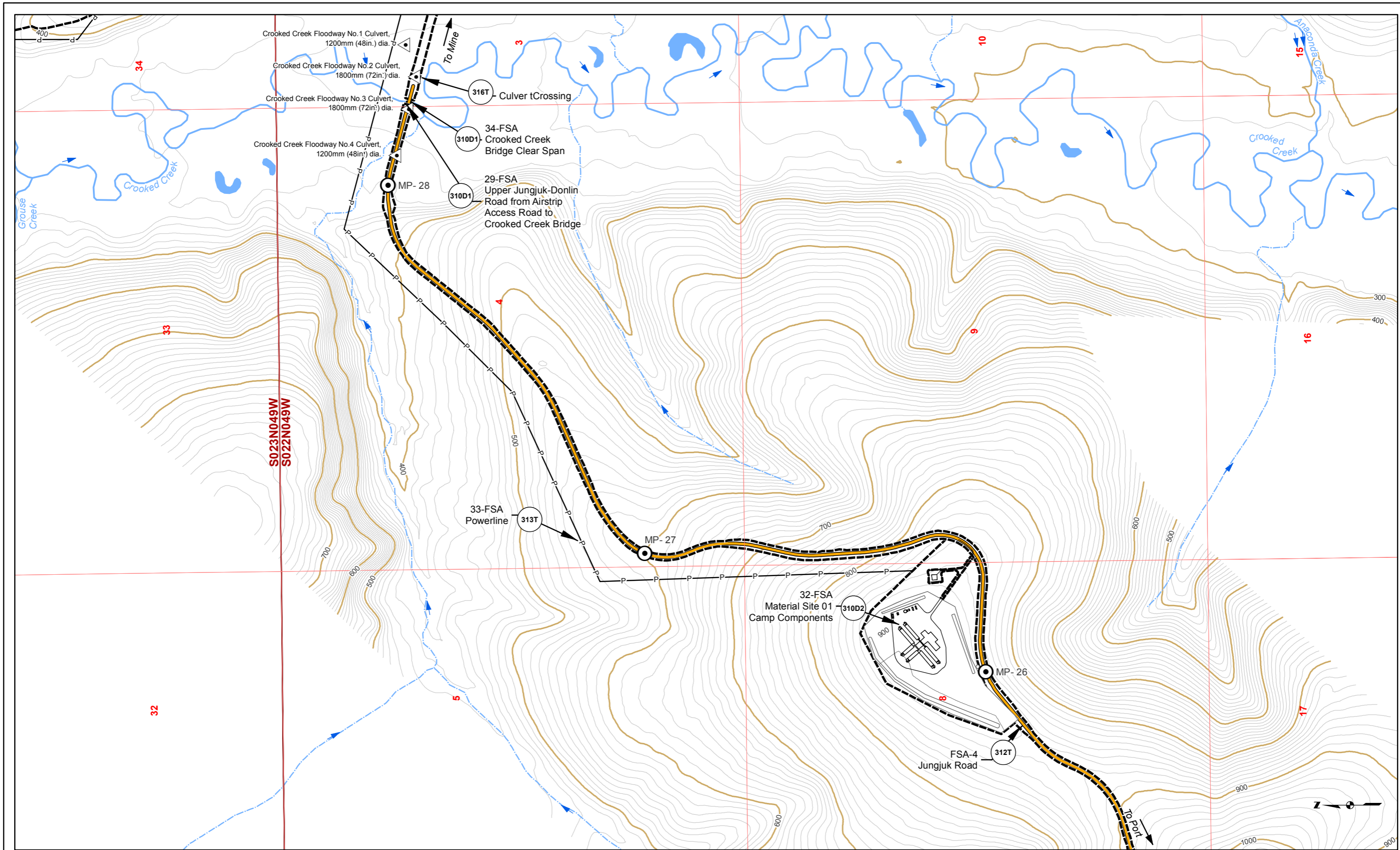
DONLIN GOLD PROJECT
 APPLICANT: Donlin Gold, LLC
 4720 Business Park Blvd., Suite G-25
 Anchorage, Alaska 99503

NAD 1983 UTM Zone 4N

SCALE: 1 inch = 1,000 feet DATE: 10/5/2015

DRAWING TITLE: **PLAN VIEW ACCESS ROAD WETLANDS MAP**

FIGURE NO. **TA-310A** FILE NO. **POA-1995-120**



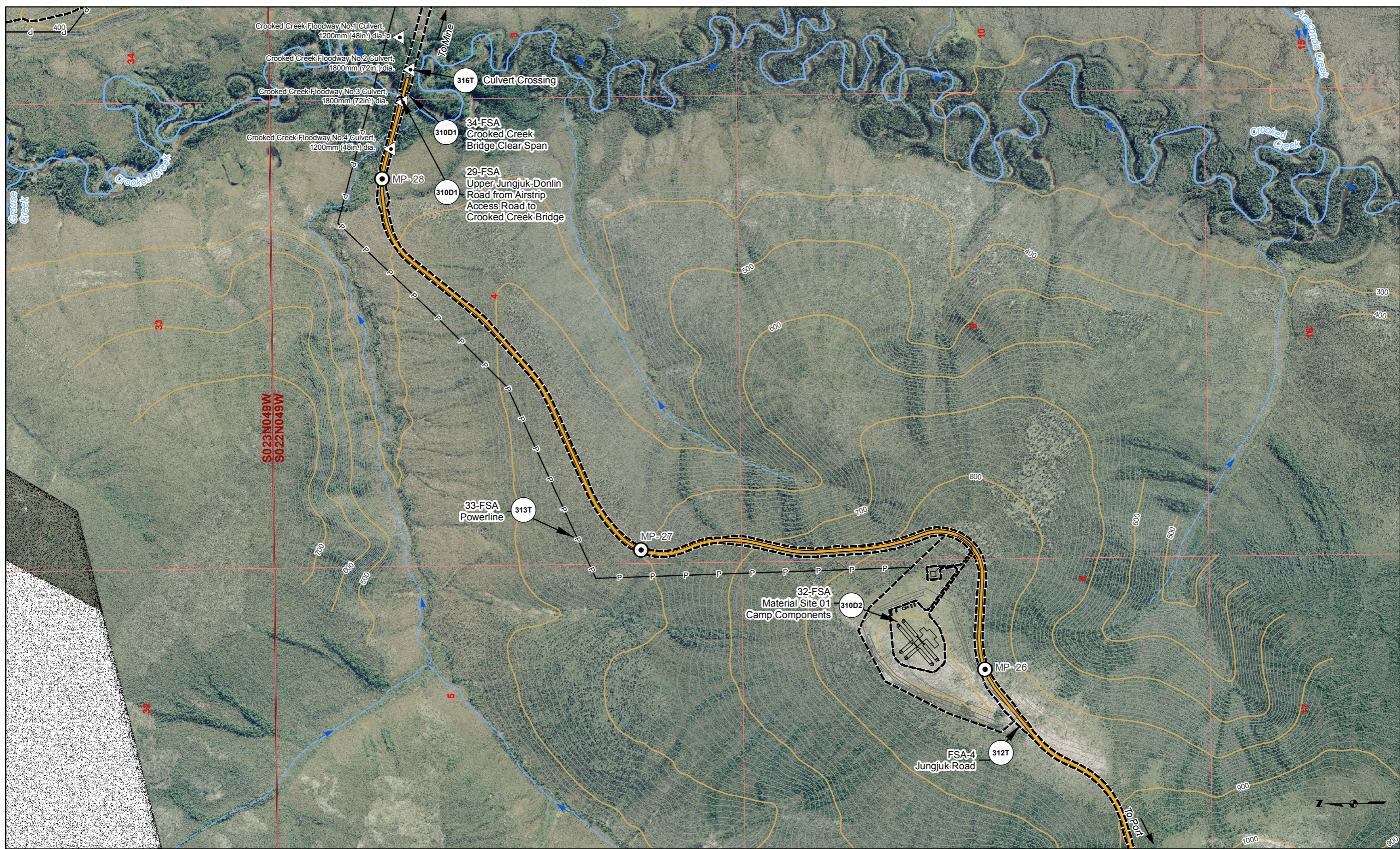
Road Milepost	Bridge	10' Contour	Cross Section	Unnamed River/Stream
Proposed Jungjuk Road	Project Disturbance Limit	100' Contour	Powerline	Named River/Stream
Culvert	Stream Flow Direction	Figure Detail Reference		

Associated Engineering Drawings	
ACAD-Donlin Jungjuk Alignment and toes.dxf (Recon);	
Donlin_Jungjuk_MaterialSites_Rev3_150202 (Recon)	

0 500 1,000 Feet

DONLIN GOLD PROJECT	
APPLICANT: Donlin Gold, LLC	
4720 Business Park Blvd., Suite G-25	
Anchorage, Alaska 99503	
NAD 1983 UTM Zone 4N	
SCALE: 1 inch = 1,000 feet	DATE: 10/5/2015

DRAWING TITLE: PLAN VIEW ACCESS ROAD ENGINEERING MAP	
FIGURE NO. TA-310B	FILE NO. POA-1995-120



- ⊙ Road Milepost
- 🔴 Bridge
- 10' Contour
- Cross Section
- 🌊 Unnamed River/Stream
- 👉 Proposed Jungjuk Road
- 🚧 Project Disturbance Limit
- 100' Contour
- P- Powerline
- 🌊 Named River/Stream
- ⚠️ Culvert
- ➡️ Stream Flow Direction
- ⊖ Figure Detail Reference

Associated Engineering Drawings	
ACAD-Donlin Jungjuk Alignment and toes.dxf (Recon);	
Donlin_Jungjuk_MaterialSites_Rev3_150202 (Recon)	

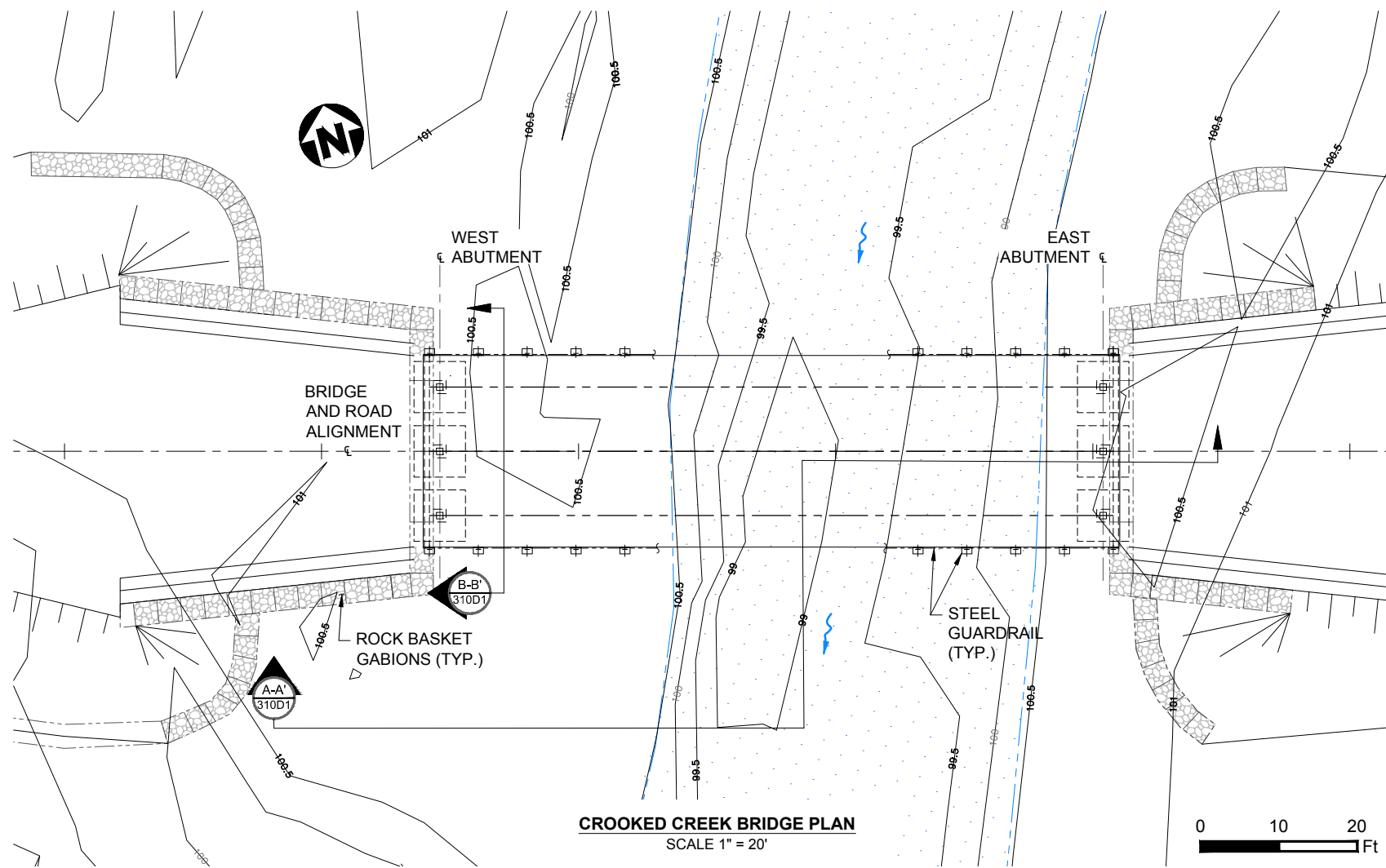
0 500 1,000
Feet

DONLIN GOLD PROJECT
 APPLICANT: Donlin Gold, LLC
 4720 Business Park Blvd., Suite G-25
 Anchorage, Alaska 99503

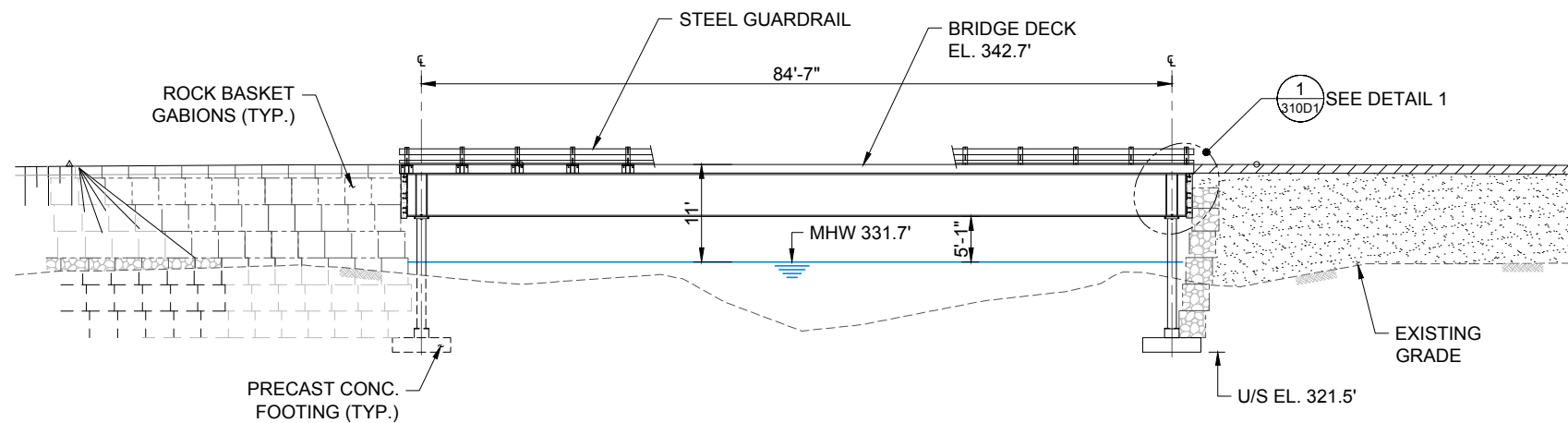
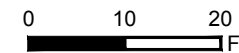
NAD 1983 UTM Zone 4N
 SCALE: 1 inch = 1,000 feet DATE: 10/5/2015

DRAWING TITLE: **PLAN VIEW
ACCESS ROAD
ENGINEERING MAP**

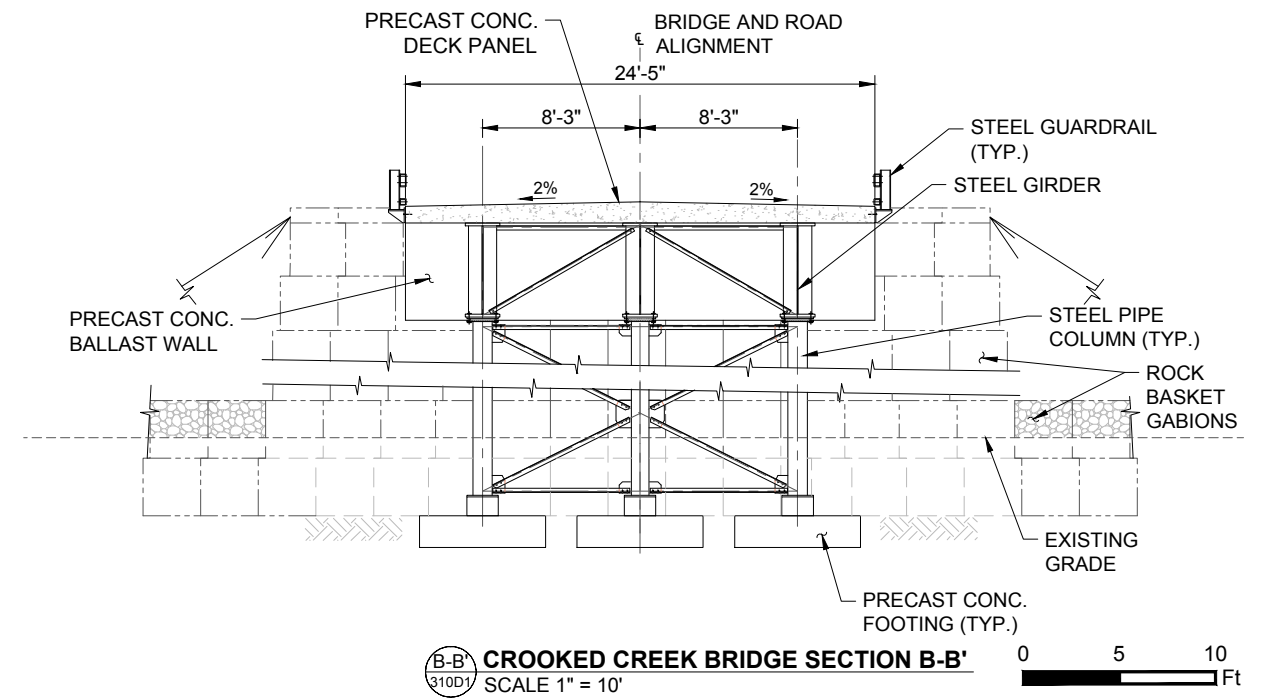
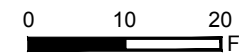
FIGURE NO. **TA-310C** FILE NO. **POA-1995-120**



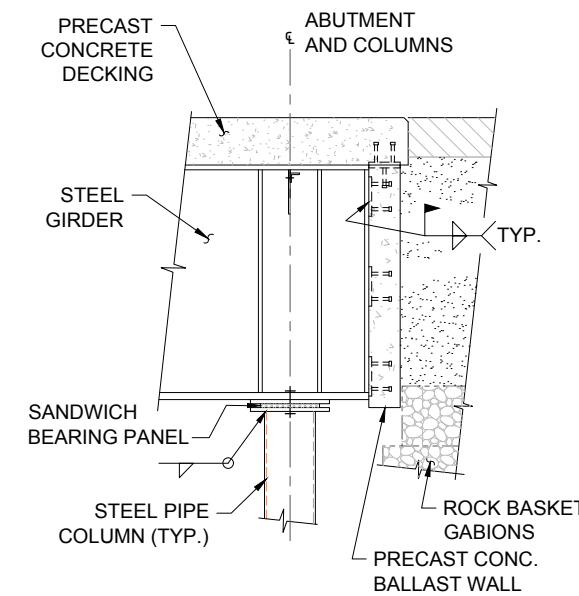
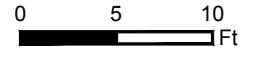
CROOKED CREEK BRIDGE PLAN
SCALE 1" = 20'



CROOKED CREEK BRIDGE SECTION A-A'
SCALE 1" = 20'



CROOKED CREEK BRIDGE SECTION B-B'
SCALE 1" = 10'



DETAIL 1
SCALE 1" = 4'

DESIGN TRUCKS:

- AUTOCLAVE VESSEL TRANSPORTER:
- DOUBLE 18-LINE INTERCOMBI SCHEUERLE TRAILERS
- 785C MINING TRUCK (EMPTY)
- L-100 OFF HIGHWAY TRUCK
- AUTOCLAVE TRAILER AND 785C TRUCK SHALL TRAVEL ON CENTERLINE OF BRIDGE WITH MAXIMUM SPEED OF 10 km/h TO REDUCE THE DYNAMIC IMPACT ON THE BRIDGE STRUCTURE.

NOTES:

1. DESIGN LIFE: 25 YEARS
2. HYDROLOGY STUDY REQUIRED.
3. ENVIRONMENTAL SITE INVESTIGATION REQUIRED.
4. CONTOUR ELEVATIONS ARE IN METERS.
5. ALLOWABLE PRESSURE OF SOIL = 10,400 psf [500 kPa]
6. GUARDRAIL WILL INCLUDE SPLASH GUARD SKIRT.
7. DIMENSIONS ARE SUBJECT TO CHANGE / NOT FOR CONSTRUCTION.

Associated Engineering Drawings

A1-166549-10-13-301 (AMEC) 04/05/2011

DONLIN GOLD PROJECT
APPLICANT: Donlin Gold, LLC
4720 Business Park Blvd., Suite G-25
Anchorage, Alaska 99503

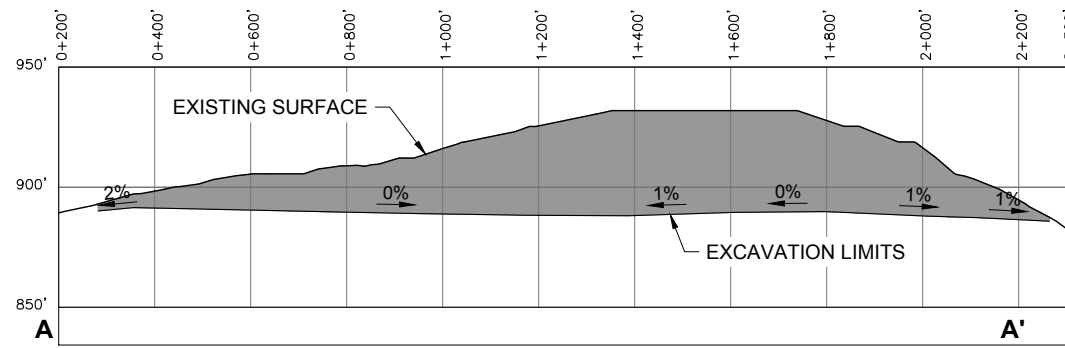
DRAWING TITLE:
**CROOKED CREEK BRIDGE
PLAN AND DETAILS**

SCALE: AS SHOWN

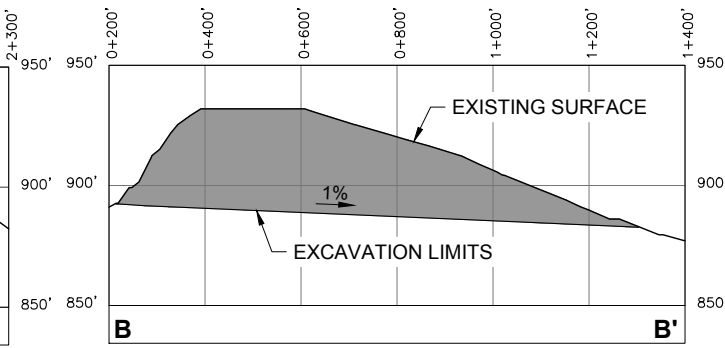
DATE: 8/11/2015

FIGURE NO.
TA-310D1

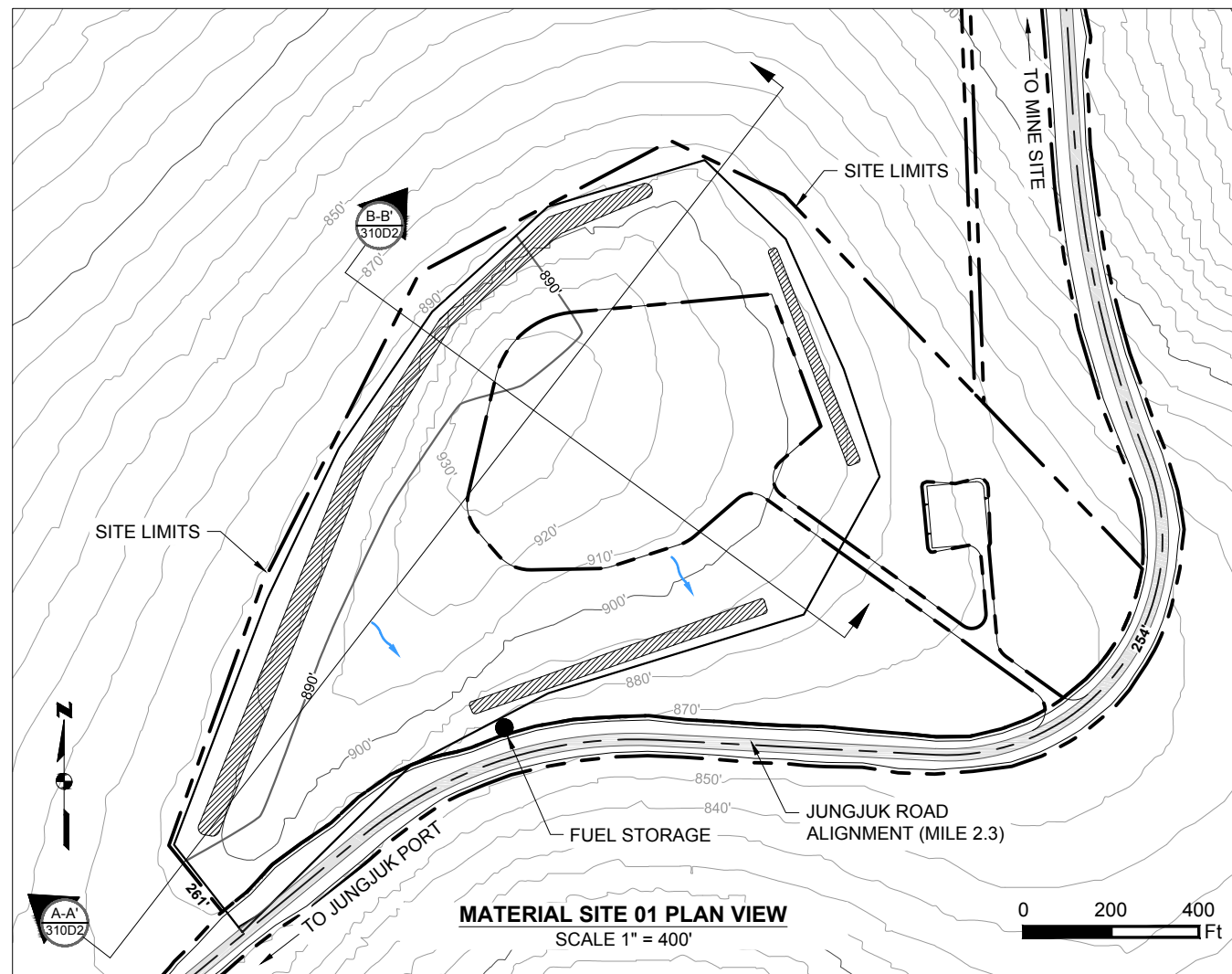
FILE NO.
POA-1995-120



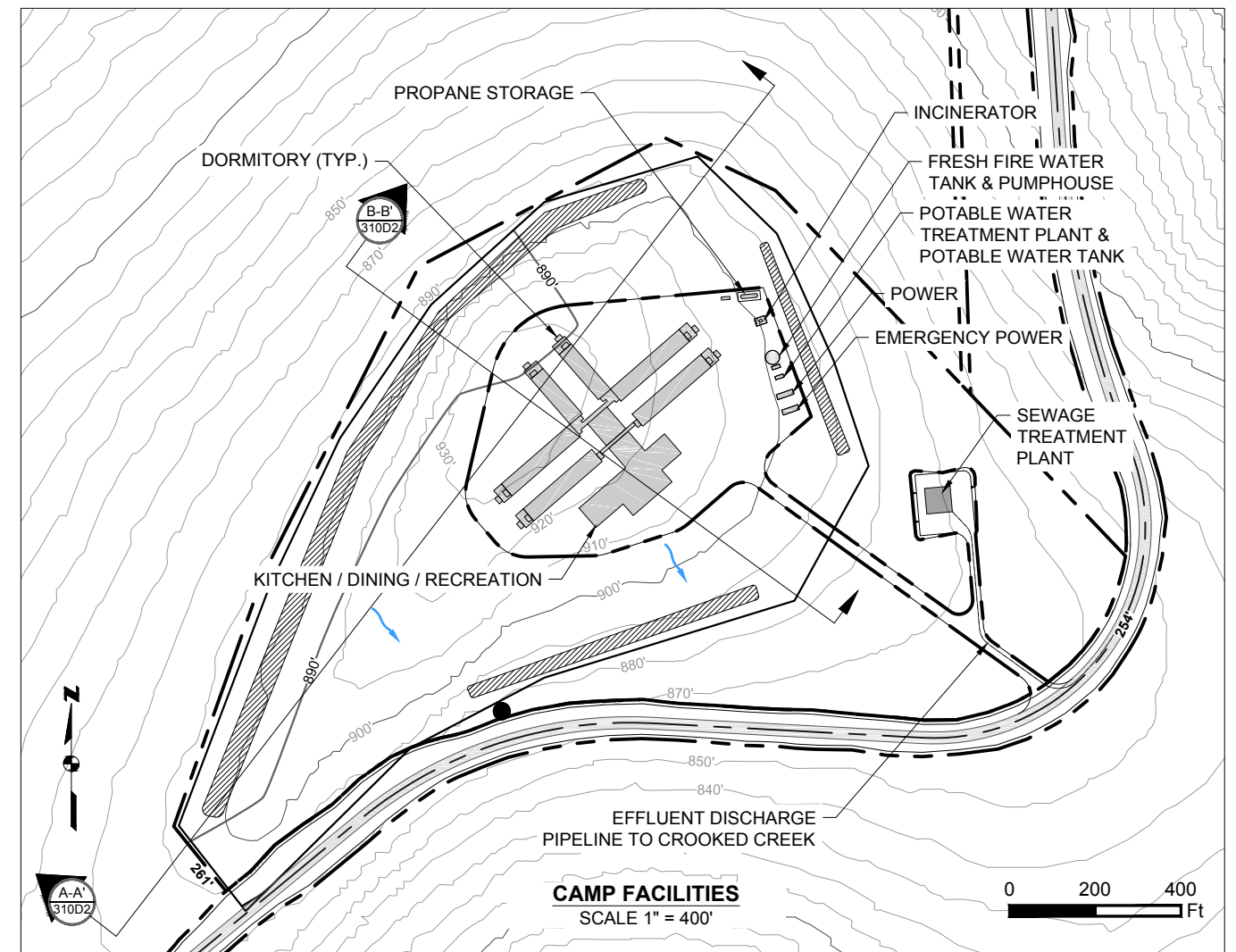
(A-A)
310D2 **CROSS-SECTION A-A'**
HORIZONTAL SCALE 1" = 400'
VERTICAL SCALE 1" = 80'



(B-B)
310D2 **CROSS-SECTION B-B'**
HORIZONTAL SCALE 1" = 400'
VERTICAL SCALE 1" = 80'



(A-A)
310D2 **MATERIAL SITE 01 PLAN VIEW**
SCALE 1" = 400'



(B-B)
310D2 **CAMP FACILITIES**
SCALE 1" = 400'

- Existing 10' Contours
- 550'— Existing 50' Contours
- Proposed 10' Contours
- 550'— Proposed 20' Contours
- Cut Area
- Proposed Drainage Direction
- ▨ Overburden And Growth Media Stockpile
- Temporary Fuel Storage

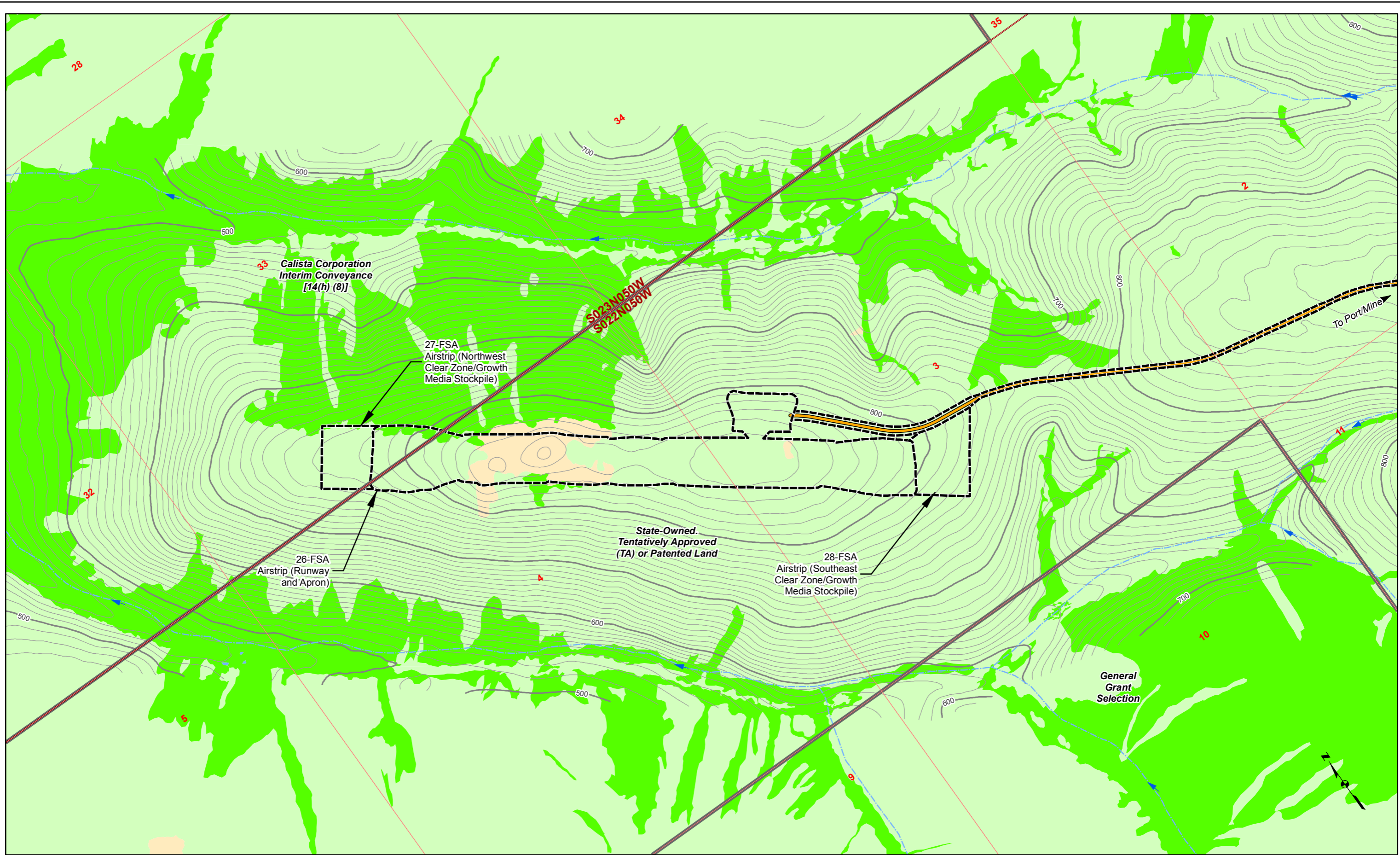
Associated Engineering Drawings

Donlin_Jungjuk_MaterialSites_Rev3_150202.dwg (RECON) FEB 2015;
A1-166549-10-13-008 vrm.dwg (AMEC) AUG 2011

DONLIN GOLD PROJECT
APPLICANT: Donlin Gold, LLC
4720 Business Park Blvd., Suite G-25
Anchorage, Alaska 99503

NAD 1983 UTM Zone 4N
SCALE: AS SHOWN DATE: 8/11/2015

DRAWING TITLE:
**MATERIAL SITE 01
LAYOUT AND SECTIONS**
FIGURE NO.: TA-310D2 FILE NO.: POA-1995-120



S023N050W
S022N050W

Calista Corporation
Interim Conveyance
[14(h) (8)]

27-FSA
Airstrip (Northwest
Clear Zone/Growth
Media Stockpile)

State-Owned.
Tentatively Approved
(TA) or Patented Land

26-FSA
Airstrip (Runway
and Apron)

28-FSA
Airstrip (Southeast
Clear Zone/Growth
Media Stockpile)

General
Grant
Selection

To Port/Mine

- | | | | | | |
|---------------|---------|-----------------------|---------------------------|--------------|-----------------------|
| Land Status | Mosaic | Waters | Bridge | 10' Contour | Proposed Jungjuk Road |
| Road Milepost | Upland | Wetlands | Project Disturbance Limit | 100' Contour | Unnamed River/Stream |
| Powerline | Culvert | Stream Flow Direction | Named River/Stream | | |

Associated Engineering Drawings
A1-166549-80-13-006.dwg (AMEC)

0 500 1,000 Feet

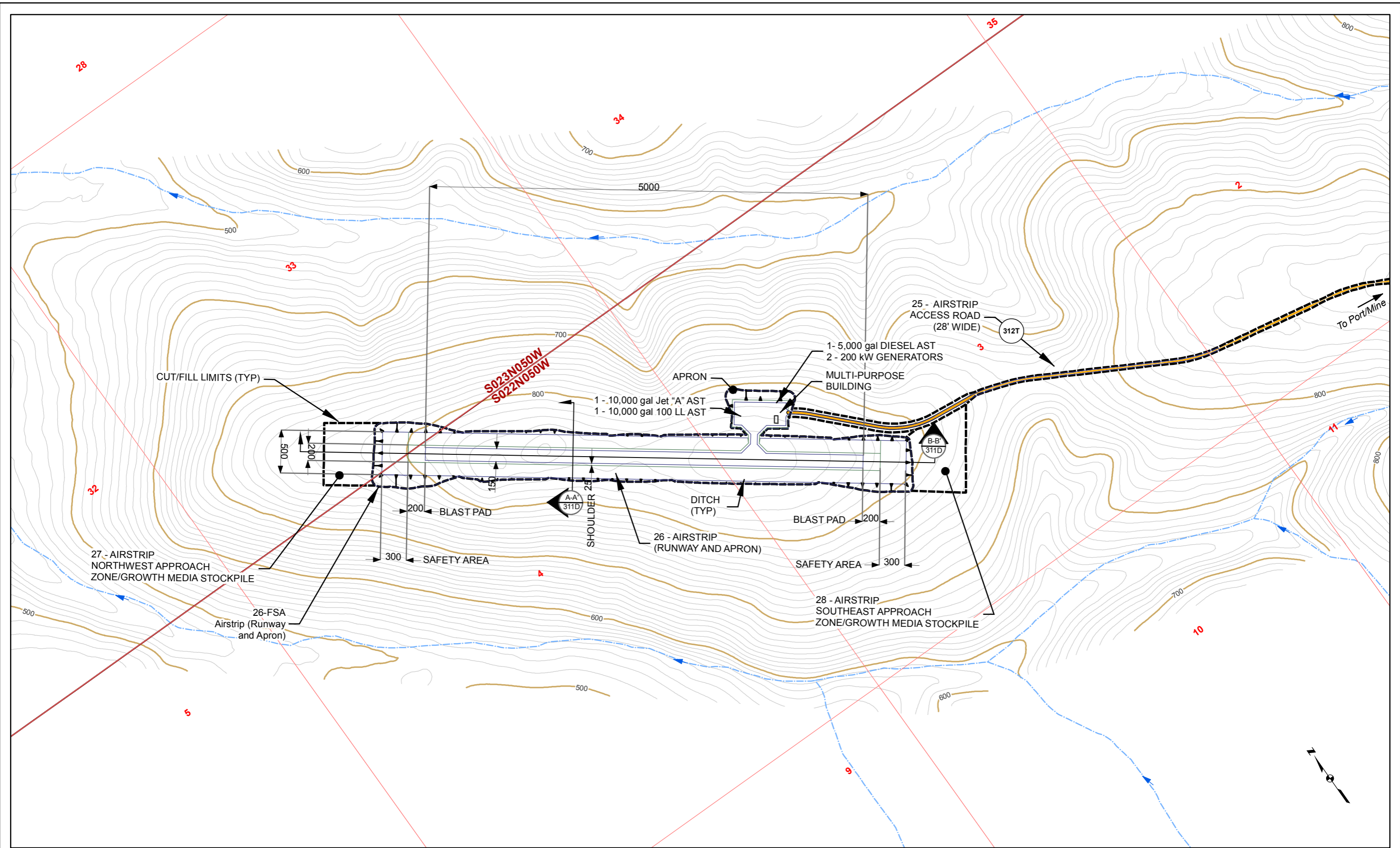
DONLIN GOLD PROJECT
APPLICANT: Donlin Gold, LLC
4720 Business Park Blvd., Suite G-25
Anchorage, Alaska 99503

NAD 1983 UTM Zone 4N

SCALE: 1 inch = 1,000 feet DATE: 8/13/2015

DRAWING TITLE: **PLAN VIEW
AIRSTRIIP & ACCESS ROAD
WETLANDS MAP**

FIGURE NO. **TA-311A** FILE NO. **POA-1995-120**



Road Milepost	Bridge	10' Contour	Cross Section	Unnamed River/Stream
Proposed Jungjuk Road	Project Disturbance Limit	100' Contour	Powerline	Named River/Stream
Culvert		Stream Flow Direction	Figure Detail Reference	

Associated Engineering Drawings	
A1-166549-80-13-020.dwg (AMEC);	
A1-166549-80-13-006.dwg (AMEC)	

0 500 1,000 Feet

DONLIN GOLD PROJECT	
APPLICANT: Donlin Gold, LLC	
4720 Business Park Blvd., Suite G-25	
Anchorage, Alaska 99503	
NAD 1983 UTM Zone 4N	
SCALE: 1 inch = 1,000 feet	DATE: 8/12/2015

DRAWING TITLE: PLAN VIEW	
AIRSTRIP & ACCESS ROAD	
ENGINEERING MAP	
FIGURE NO. TA-311B	FILE NO. POA-1995-120