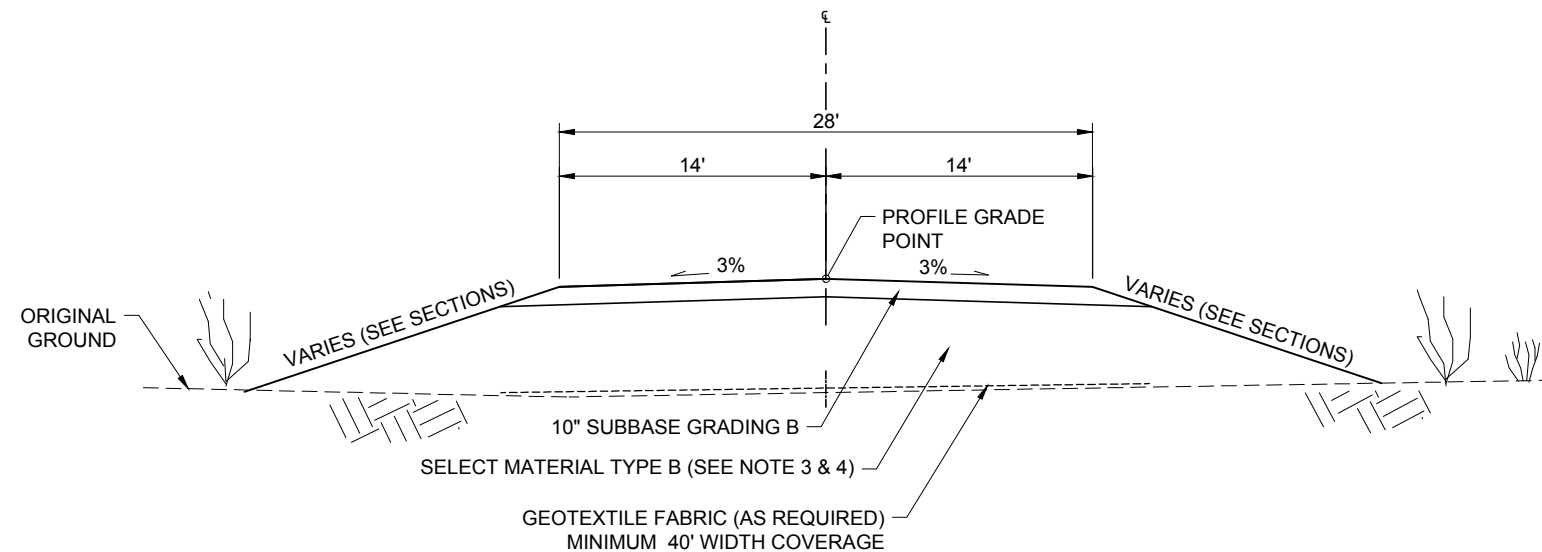


	Associated Engineering Drawings		DONLIN GOLD PROJECT		DRAWING TITLE:	
	A1-166549-80-13-020 (AMEC) 04/05/2011; A1-166549-80-13-021 (AMEC) 04/05/2011		APPLICANT: Donlin Gold, LLC 4720 Business Park Blvd., Suite G-25 Anchorage, Alaska 99503		AIRSTrip SECTIONS	
	SCALE: AS SHOWN		DATE: 8/11/2015		FIGURE NO. TA-311D	FILE NO. POA-1995-120

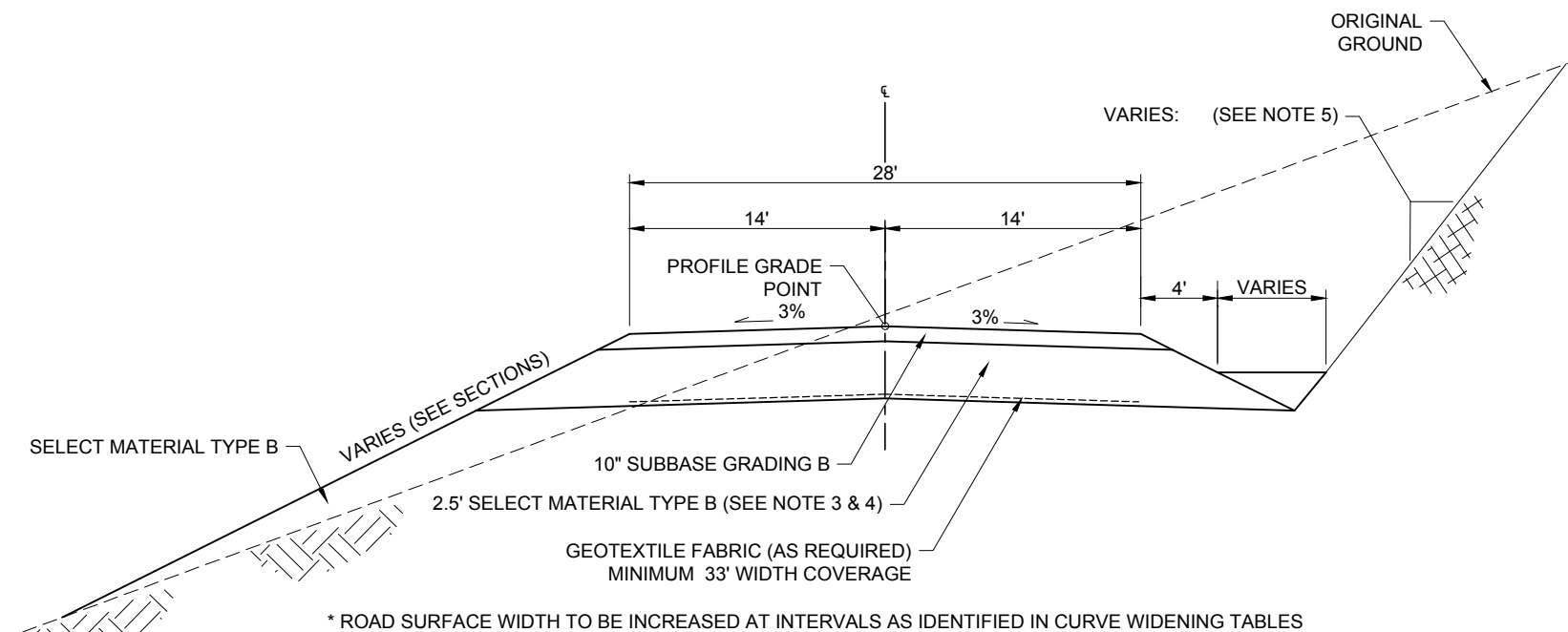


SECTION TYPICAL FOR WETLAND AND PERMAFROST INTERVALS IN MOSTLY LEVEL TERRAIN.

A-A'
312T
ROAD TYPICAL SECTION FOR WETLAND OR PERMAFROST AREAS
SCALE 1" = 10'
0 5 10
Ft

NOTES:

1. CLEARING LIMITS ARE TOE OF FILL.
2. SUBBASE GRADING B; TO CONSIST OF 3" MINUS, WELL GRADED, GRANULAR MATERIAL WITH 6 TO 10% PASSING THE 200 SIEVE. MATERIAL TO BE DURABLE
3. SELECT MATERIAL TYPE B; TO CONSIST OF COARSE ROCK OR GRAVEL. NON-FROST-SUSCEPTIBLE.
4. DEPTH OF FILL WILL VARY DEPENDING ON SOIL TYPE AND CONDITION. 6' TOTAL EMBANKMENT DEPTH WILL TYPICALLY BE THE MINIMUM.
5. TO THE EXTENT POSSIBLE, NATIVE VEGETATION AND GROUND SURFACE TO BE LEFT INPLACE.



* ROAD SURFACE WIDTH TO BE INCREASED AT INTERVALS AS IDENTIFIED IN CURVE WIDENING TABLES

B-B'
312T
ROAD TYPICAL SECTION FOR AREAS WITH GOOD SOILS OR ROCK
SCALE 1" = 10'
0 5 10
Ft

NOTES:

1. CLEARING LIMITS MIN. 3.3' BEYOND TOP OF CUT OR TOE OF FILL.
2. SUBBASE GRADING B; TO CONSIST OF 3" MINUS, WELL GRADED, GRANULAR MATERIAL WITH 6 TO 10% PASSING THE 200 SIEVE. MATERIAL TO BE DURABLE
3. SELECT MATERIAL TYPE B; TO CONSIST OF COARSE ROCK OR GRAVEL. NON-FROST-SUSCEPTIBLE.
4. DEPTH OF FILL WILL VARY DEPENDING ON SOIL TYPE AND CONDITION. 3.3' TOTAL EMBANKMENT DEPTH WILL TYPICALLY BE THE MINIMUM.
5. BACKSLOPES WILL VARY DEPENDENT UPON SOIL TYPES OR ROCK CHARACTERISTICS.
TYPICAL:
3.0 : 1 FOR WET SILTY COLLUVIAL SOIL
2.0 : 1 FOR WELL DRAINED SILT AND SILTY GRAVEL
1.5 : 1 FOR WELL DRAINED SILT AND SILTY GRAVEL UP TO 1.0 : 1 FOR ROCK
6. ACCOMODATE EXCESS EXCAVATION AND WASTE DISPOSAL BY FLATTENING AND/OR EXTENDING INSLOPE. EXTENT TO BE DETERMINED BY FIELD ENGINEER.

Associated Engineering Drawings

A1-166549-4100-C-0097 (RECON/AMEC) MAR 2012;
A1-166549-4100-S-101 (RECON/AMEC) MAR 2012

DONLIN GOLD PROJECT
APPLICANT: Donlin Gold, LLC
4720 Business Park Blvd., Suite G-25
Anchorage, Alaska 99503

DRAWING TITLE:

ROAD TYPICAL SECTIONS

SCALE: AS SHOWN

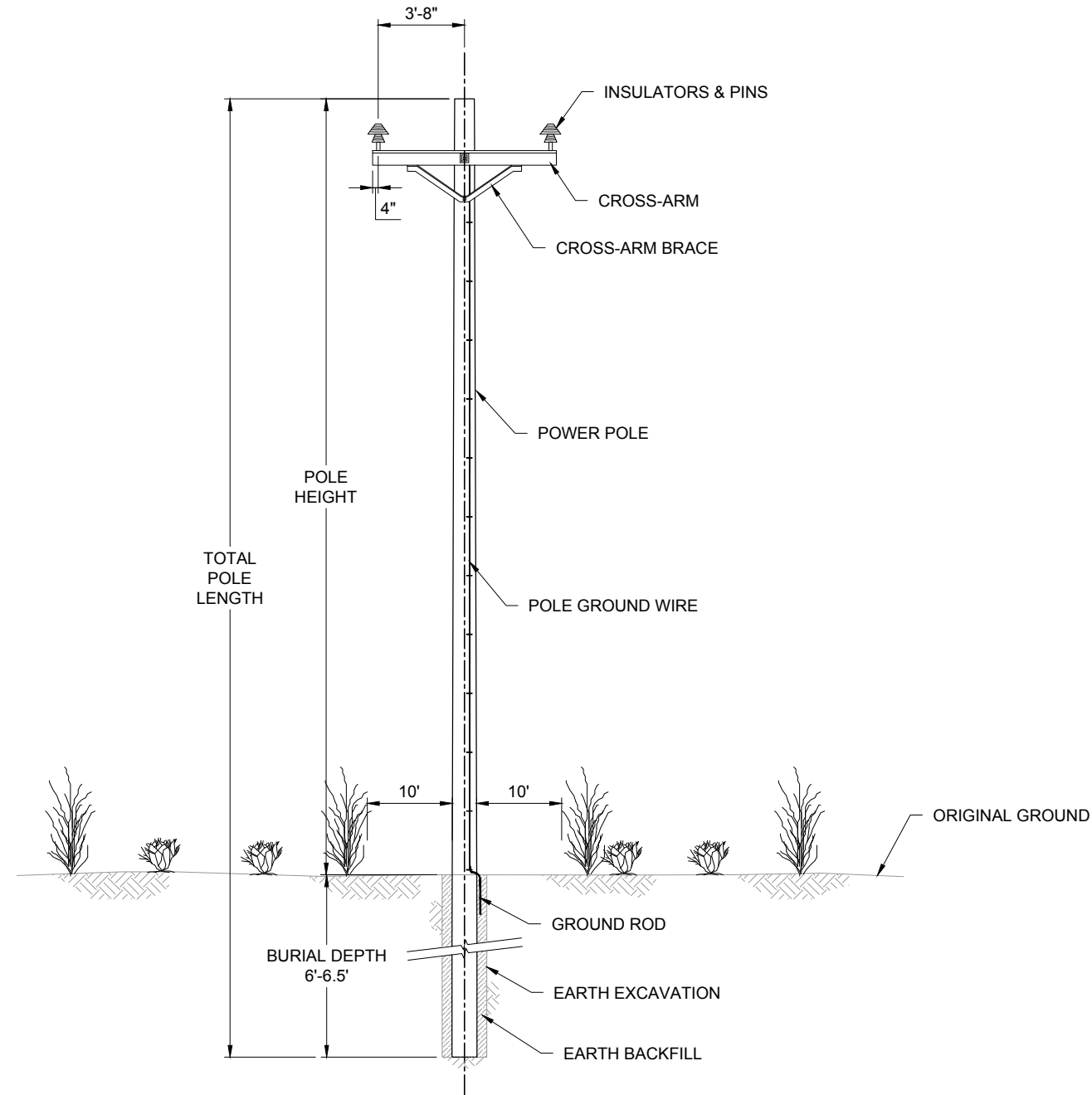
DATE: 8/11/2015

FIGURE NO.

TA-312T

FILE NO.

POA-1995-120

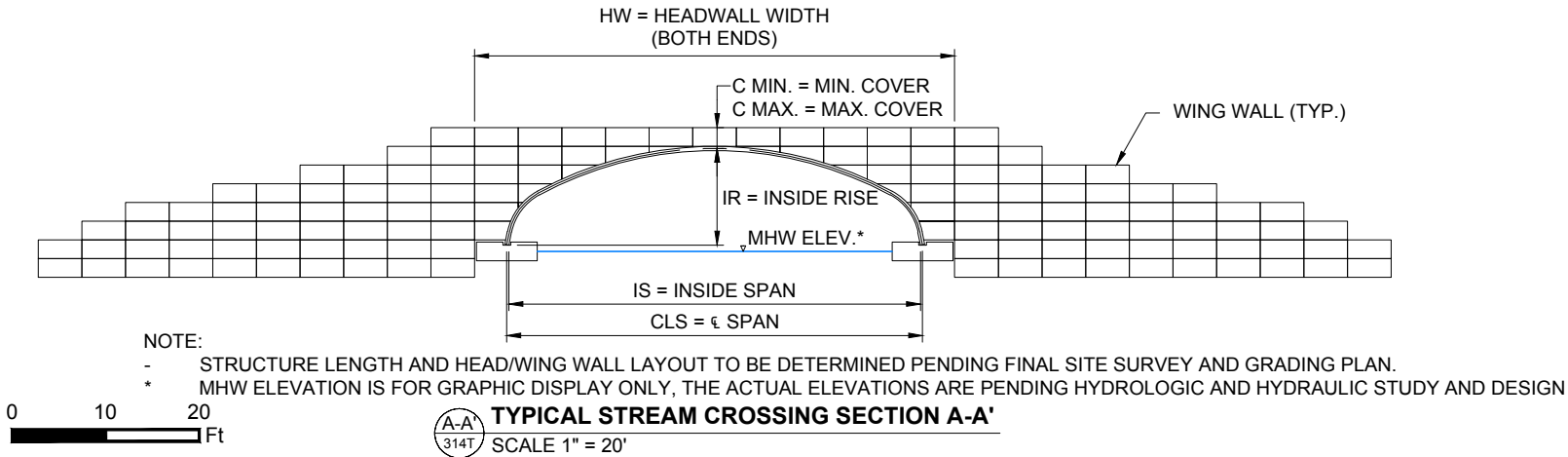
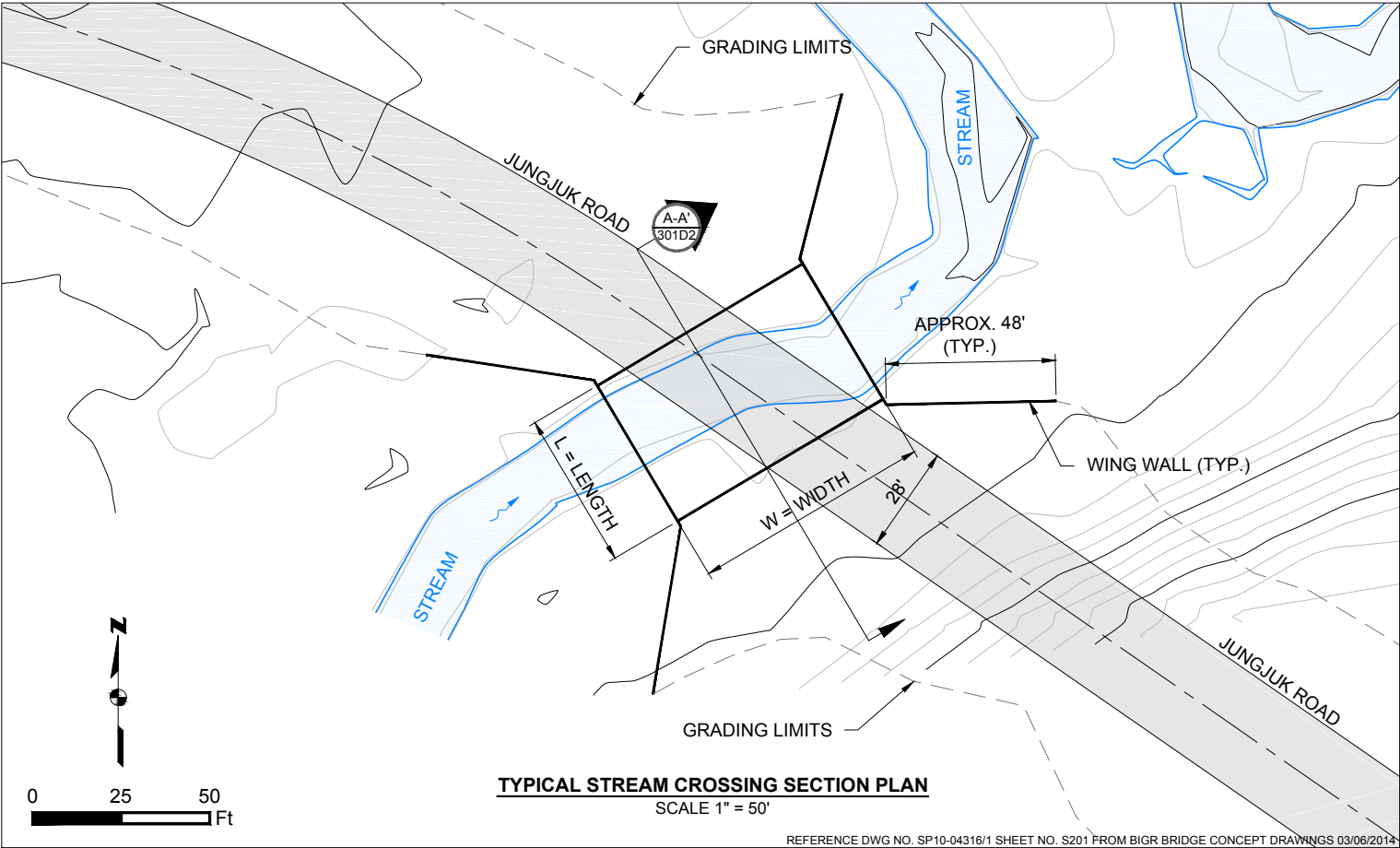


NOTES:

1. CLEARING LIMITS TO BE MIN. 10' EACH SIDE OF POWER POLE.
2. MULCH AND ORGANIC DEBRIS FROM CLEARING TO REMAIN ON GROUND SURFACE.
3. SOIL NOT TO BE DISTURBED EXCEPT AT SPECIFIC LOCATIONS AS PERMITTED.
4. DIMENSIONS ARE APPROXIMATE.

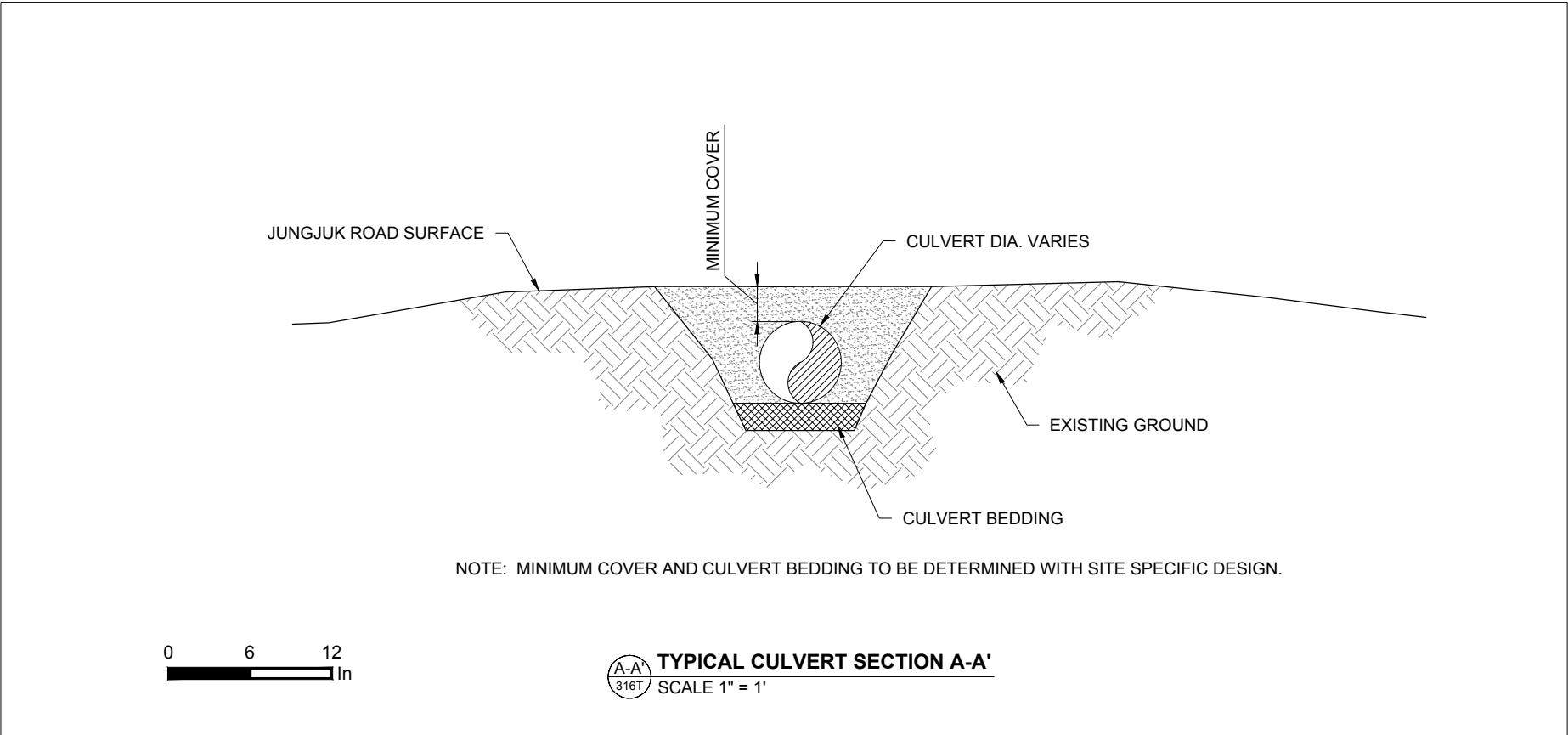
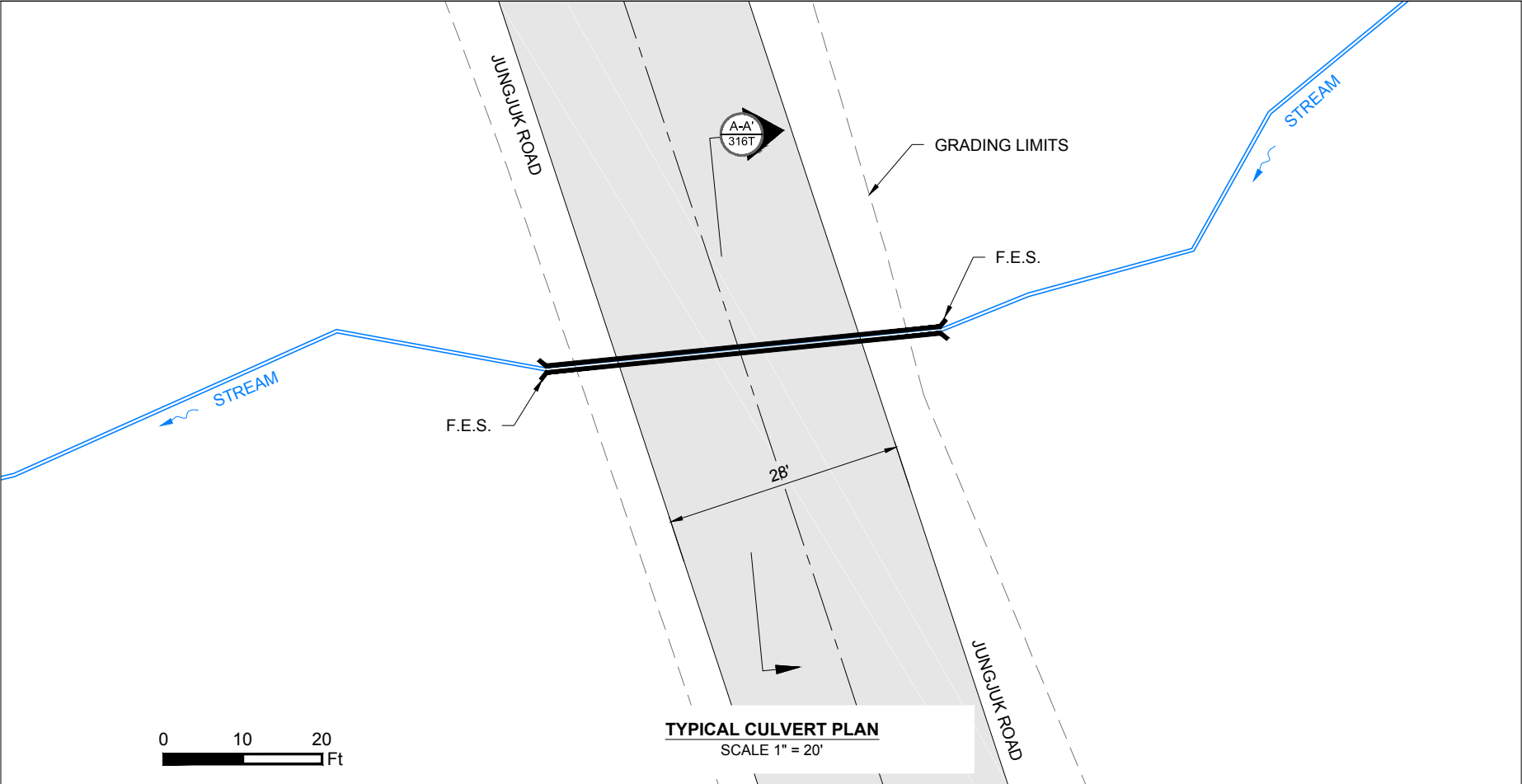
A POWERPOLE SECTION
313T N.T.S.

	Associated Engineering Drawings		DONLIN GOLD PROJECT		DRAWING TITLE:	
	M21E-DT-EE_01.dwg (BAKER) SEP 2014		APPLICANT: Donlin Gold, LLC 4720 Business Park Blvd., Suite G-25 Anchorage, Alaska 99503		TYPICAL POWERPOLE CLEARING LIMITS DETAILS	
			NAD 1983 UTM Zone 4N		FIGURE NO.	FILE NO.
			SCALE: AS SHOWN	DATE: 8/11/2015	TA-313T	POA-1995-120



CREEK CROSSING DIMENSIONS								
	W	L	HW	IR	C MIN.	C MAX.	IS	CLS
NORTH FORK GETMUNA CREEK	67'-6"	44'-5 1/2"	48'	10'-1 1/8"	2'	3'	44'-0 3/16"	44'-5 9/16"
SOUTH FORK GETMUNA CREEK	70'	44'-5 1/2"	48'	10'-1 1/8"	2'	3'	44'-0 3/16"	44'-5 9/16"
GETMUNA TRIBUTARY CREEK	70'	30'-10 1/2"	40'	9'-11 1/4"	3'	4'	30'-5 1/16"	30'-10 9/16"
UPPER JUNGJUK CREEK	50'	29'-11 3/4"	32'	10'-10 3/4"	3'	4'	29'-6 3/8"	29'-11 7/8"
LOWER JUNGJUK CREEK	40'-7 3/4"	67'-6"	44'	14'-10 3/16"	3'	4'	40'-2 3/16"	40'-7 11/16"

DIMENSIONS BASED ON REFERENCE DRAWINGS SP10-04316/1 S101, S201, S102, S202, S103, S203, S104, S204, S105, S205 FROM BGR BRIDGE CONCEPT DRAWINGS.



	Associated Engineering Drawings		DONLIN GOLD PROJECT APPLICANT: Donlin Gold, LLC 4720 Business Park Blvd., Suite G-25 Anchorage, Alaska 99503		DRAWING TITLE: TYPICAL CULVERT			
			NAD 1983 UTM Zone 4N		FIGURE NO.		FILE NO.	
					TA-316T		POA-1995-120	
			SCALE: AS SHOWN		DATE: 8/11/2015			

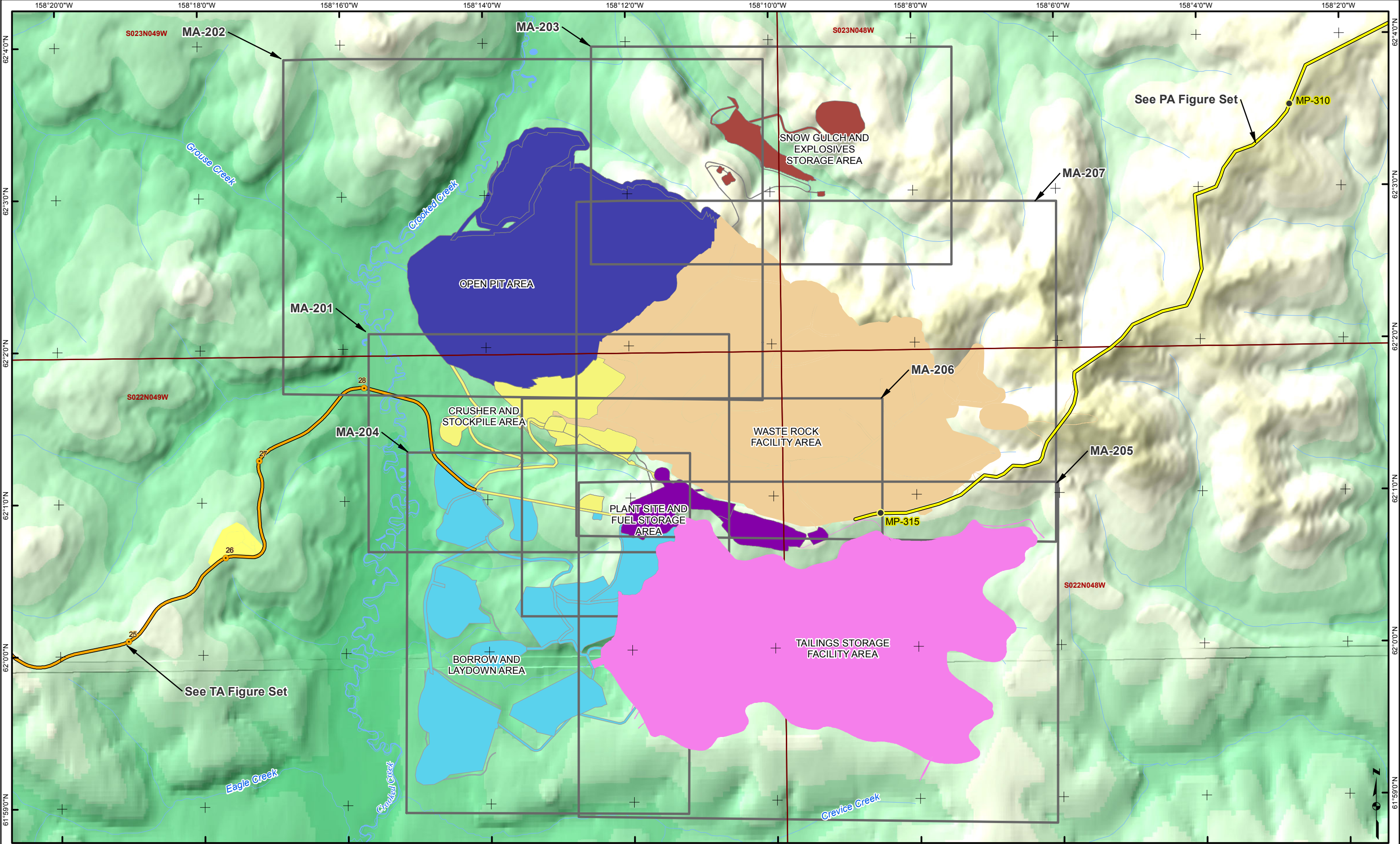
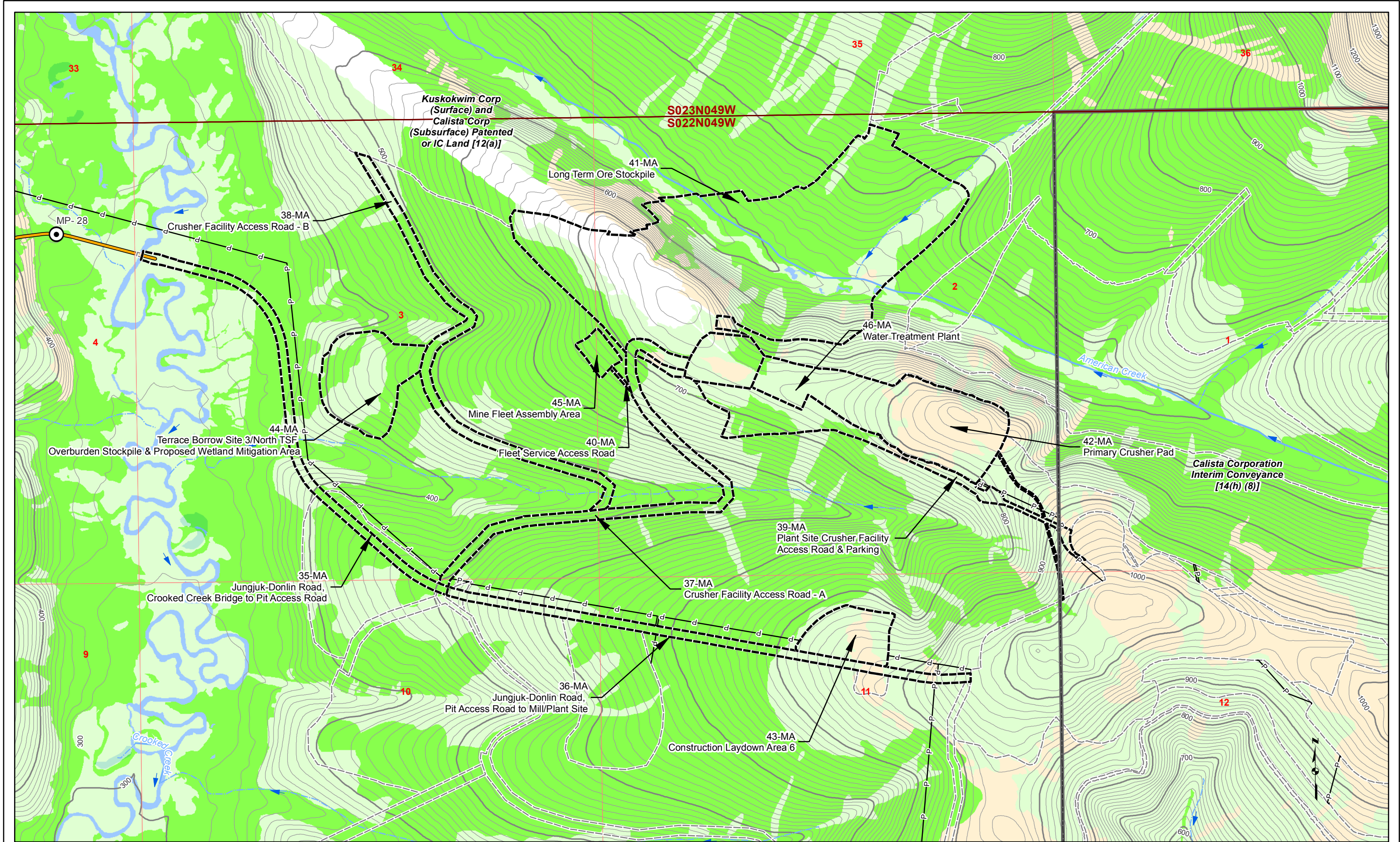
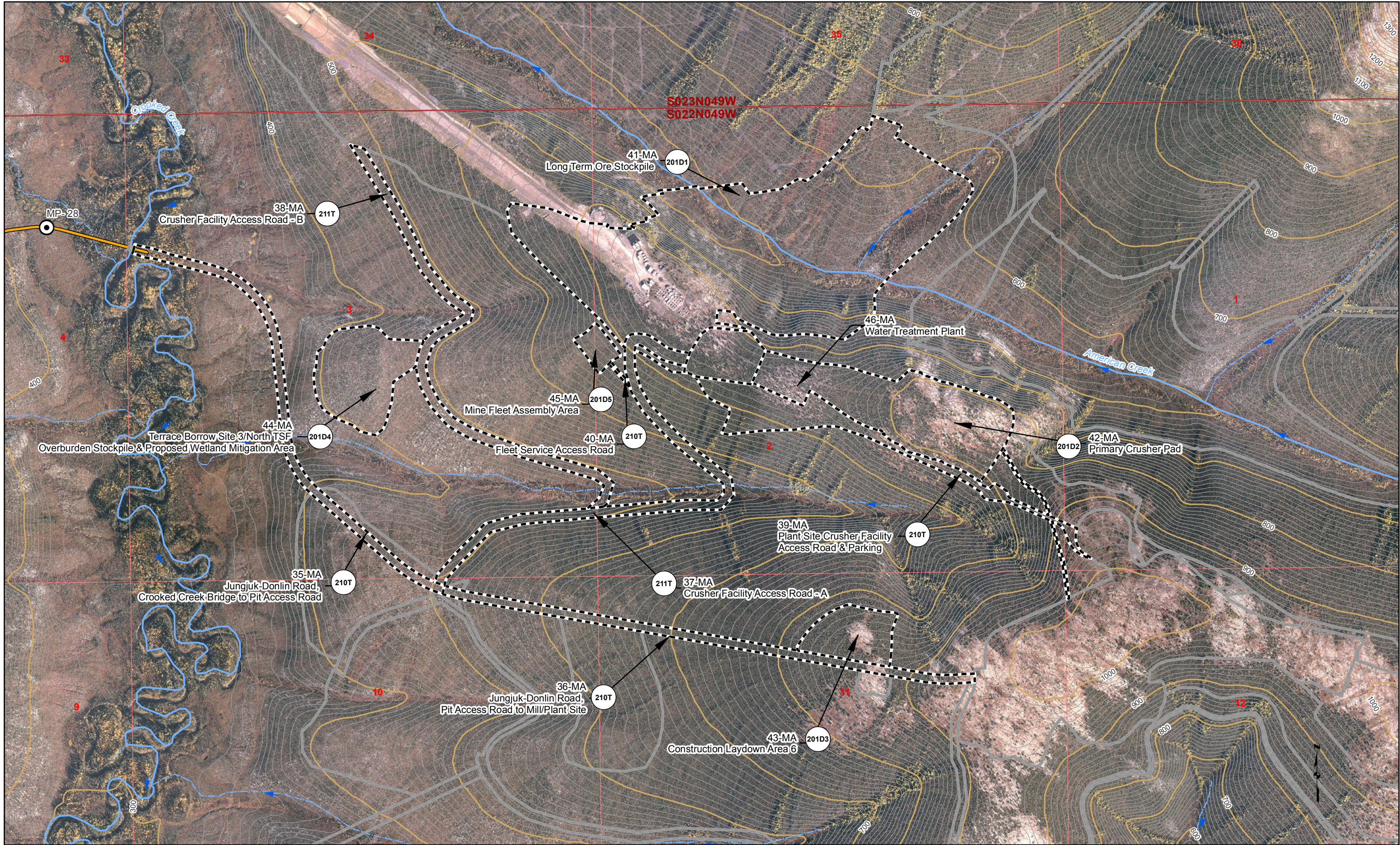


Figure Set		Associated Engineering Drawings		DONLIN GOLD PROJECT APPLICANT: Donlin Gold, LLC 4720 Business Park Blvd., Suite G-25 Anchorage, Alaska 99503		DRAWING TITLE: PLAN VIEW MINE AREA INDEX MAP	
● Pipeline Milepost (MP)		● Proposed Natural Gas Pipeline		● MA-206		● MA-203	
● Road Milepost		● Proposed Jungjuk Road		● MA-205		● MA-202	
● River/Stream		● MA-204		● MA-201			
				● MA-207			
				● MA-206			
				● MA-205			
				● MA-204			
				● MA-203			
				● MA-202			
				● MA-201			
				● MA-207			
				● MA-206			
				● MA-205			
				● MA-204			
				● MA-203			
				● MA-202			
				● MA-201			
				● MA-207			
				● MA-206			
				● MA-205			
				● MA-204			
				● MA-203			
				● MA-202			
				● MA-201			
				● MA-207			
				● MA-206			
				● MA-205			
				● MA-204			
				● MA-203			
				● MA-202			
				● MA-201			
				● MA-207			
				● MA-206			
				● MA-205			
				● MA-204			
				● MA-203			
				● MA-202			
				● MA-201			
				● MA-207			
				● MA-206			
				● MA-205			
				● MA-204			
				● MA-203			
				● MA-202			
				● MA-201			
				● MA-207			
				● MA-206			
				● MA-205			
				● MA-204			
				● MA-203			
				● MA-202			
				● MA-201			
				● MA-207			
				● MA-206			
				● MA-205			
				● MA-204			
				● MA-203			
				● MA-202			
				● MA-201			
				● MA-207			
				● MA-206			
				● MA-205			
				● MA-204			
				● MA-203			
				● MA-202			
				● MA-201			
				● MA-207			
				● MA-206			
				● MA-205			
				● MA-204			
				● MA-203			
				● MA-202			
				● MA-201			
				● MA-207			
				● MA-206			
				● MA-205			
				● MA-204			
				● MA-203			
				● MA-202			
				● MA-201			
				● MA-207			
				● MA-206			
				● MA-205			
				● MA-204			
				● MA-203			
				● MA-202			
				● MA-201			
				● MA-207			
				● MA-206			
				● MA-205			
				● MA-204			
				● MA-203			
				● MA-202			
				● MA-201			
				● MA-207			
				● MA-206			
				● MA-205			
				● MA-204			
				● MA-203			
				● MA-202			
				● MA-201			
				● MA-207			
				● MA-206			
				● MA-205			
				● MA-204			
				● MA-203			
				● MA-202			
				● MA-201			
				● MA-207			
				● MA-206			
				● MA-205			
				● MA-204			
				● MA-203			
				● MA-202			
				● MA-201			
				● MA-207			
				● MA-206			
				● MA-205			
				● MA-204			
				● MA-203			
				● MA-202			
				● MA-201			
				● MA-207			
				● MA-206			
				● MA-205			
				● MA-204			
				● MA-203			
				● MA-202			
				● MA-201			
				● MA-207			
				● MA-206			
				● MA-205			
				● MA-204			
				● MA-203			
				● MA-202			
				● MA-201			
				● MA-207			
				● MA-206			
				● MA-205			
				● MA-204			
				● MA-203			
				● MA-202			
				● MA-201			
				● MA-207			
				● MA-206			
				● MA-205			
				● MA-204			
				● MA-203			
				● MA-202			
				● MA-201			
				● MA-207			
				● MA-206			
				● MA-205			
				● MA-204			
				● MA-203			
				● MA-202			
				● MA-201			
				● MA-207			
				● MA-206			
				● MA-205			
				● MA-204			
				● MA-203			
				● MA-202			
				● MA-201			
				● MA-207			
				● MA-206			
				● MA-205			
				● MA-204			
				● MA-203			
				● MA-202			
				● MA-201			
				● MA-207			
				● MA-206			
				● MA-205			
				● MA-204			
				● MA-203			
				● MA-202			
				● MA-201			
				● MA-207			
				● MA-206			
				● MA-205			
				● MA-204			
				● MA-203			
				● MA-202			
				● MA-201			
				● MA-207			
				● MA-206			
				● MA-205			
				● MA-204			
				● MA-203			
				● MA-202			
				● MA-201			
				● MA-207			
				● MA-206			
				● MA-205			
				● MA-204			
				● MA-203			
				● MA-202			
				● MA-201			
				● MA-207			
				● MA-206			
				● MA-205			
				● MA-204			
				● MA-203			
				● MA-202			
				● MA-201			
				● MA-207			
				● MA-206			
				● MA-205			
				● MA-204			
				● MA-203			
				● MA-202			
				● MA-201			
				● MA-207			
				● MA-206			
				● MA-205			
				● MA-204			
				● MA-203			
				● MA-202			
				● MA-201			
				● MA-207			
				● MA-206			
				● MA-205			
				● MA-204			
				● MA-203			
				● MA-202			
				● MA-201			
				● MA-207			
				● MA-206			
				● MA-205			
				● MA-204			
				● MA-203			
				● MA-202			
				● MA-201			
				● MA-207			
				● MA-206			
				● MA-205			
				● MA-204			
				● MA-203			
				● MA-202			
				● MA-201			
				● MA-207			
				● MA-206			
				● MA-205			
				● MA-204			
				● MA-203			
				● MA-202			
				● MA-201			
				● MA-207			
				● MA-206			
				● MA-205			
				● MA-204			
				● MA-203			
				● MA-202			
				● MA-201			
				● MA-207			
				● MA-206			
				● MA-205			
				● MA-204			
				● MA-203			
				● MA-202			
				● MA-201			
				● MA-207			
				● MA-206			
				● MA-205			
				● MA-204			
				● MA-203			
				● MA-202			
				● MA-201			
				● MA-207			
				● MA-206			
				● MA-205			
				● MA-204			
				● MA-203			
				● MA-202			
				● MA-201			
				● MA-207			
				● MA-206			
				● MA-205			
				● MA-204			
				● MA-203			
				● MA-202			
				● MA-201			
				● MA-207			
				● MA-206			
				● MA-205			
				● MA-204			
				● MA-203			
				● MA-202			
				● MA-201			
				● MA-207			
				● MA-206			
				● MA-205			
				● MA-204			
				● MA-203			
				● MA-202			
				● MA-201			
				● MA-207			
				● MA-206			
				● MA-205			
				● MA-204			
				● MA-203			
				● MA-202			
				● MA-201			
				● MA-207			
				● MA-206			
				● MA-205			
				● MA-204			
				● MA-203			
				● MA-202			
				● MA-201			



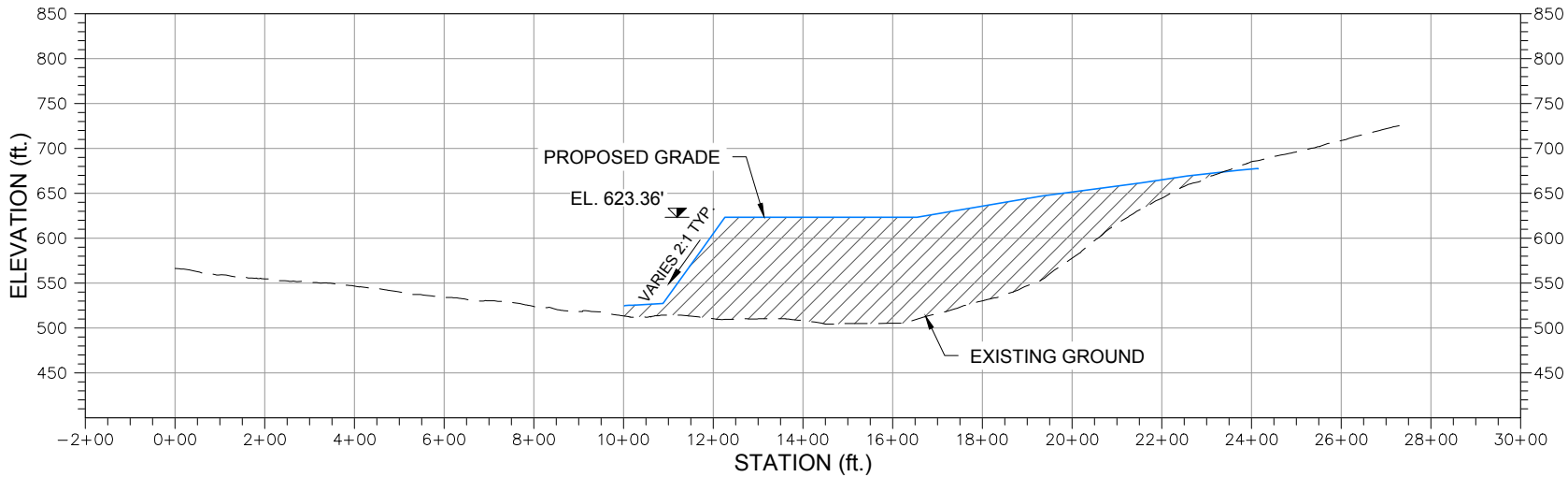
Land Status Road Milepost Project Disturbance Limit	Mosaic Upland Wetlands	100' Contour 10' Contour Powerline Stream Flow Direction	Proposed Jungjuk Road Unnamed River/Stream Named River/Stream	Associated Engineering Drawings 0 500 1,000 Feet	DONLIN GOLD PROJECT APPLICANT: Donlin Gold, LLC 4720 Business Park Blvd., Suite G-25 Anchorage, Alaska 99503 NAD 1983 UTM Zone 4N SCALE: 1 inch = 1,000 feet DATE: 10/5/2015	DRAWING TITLE: PLAN VIEW MINE AREA WETLANDS MAP FIGURE NO. MA-201A FILE NO. POA-1995-120
--	-------------------------------------	--	--	--	---	---



 Proposed Jungjuk Road  Road Milepost	 10' Contour  100' Contour  Stream Flow Direction	 Cross Section  Project Disturbance This Sheet  Proposed Disturbance (Other Sheets)	 Unnamed River/Stream  Named River/Stream  Figure Detail Reference	Associated Engineering Drawings		DONLIN GOLD PROJECT APPLICANT: Donlin Gold, LLC 4720 Business Park Blvd., Suite G-25 Anchorage, Alaska 99503		DRAWING TITLE: PLAN VIEW MINE AREA ENGINEERING MAP	
				 0 500 1,000 Feet		NAD 1983 UTM Zone 4N		FIGURE NO. MA-201C	FILE NO. POA-1995-120
				SCALE: 1 inch = 1,000 feet		DATE: 10/5/2015			



LONG TERM ORE STOCKPILE PLAN
SCALE 1" = 500'



LONG TERM ORE STOCKPILE SECTION A-A'
HORIZONTAL SCALE 1" = 400'
VERTICAL SCALE 1" = 200'

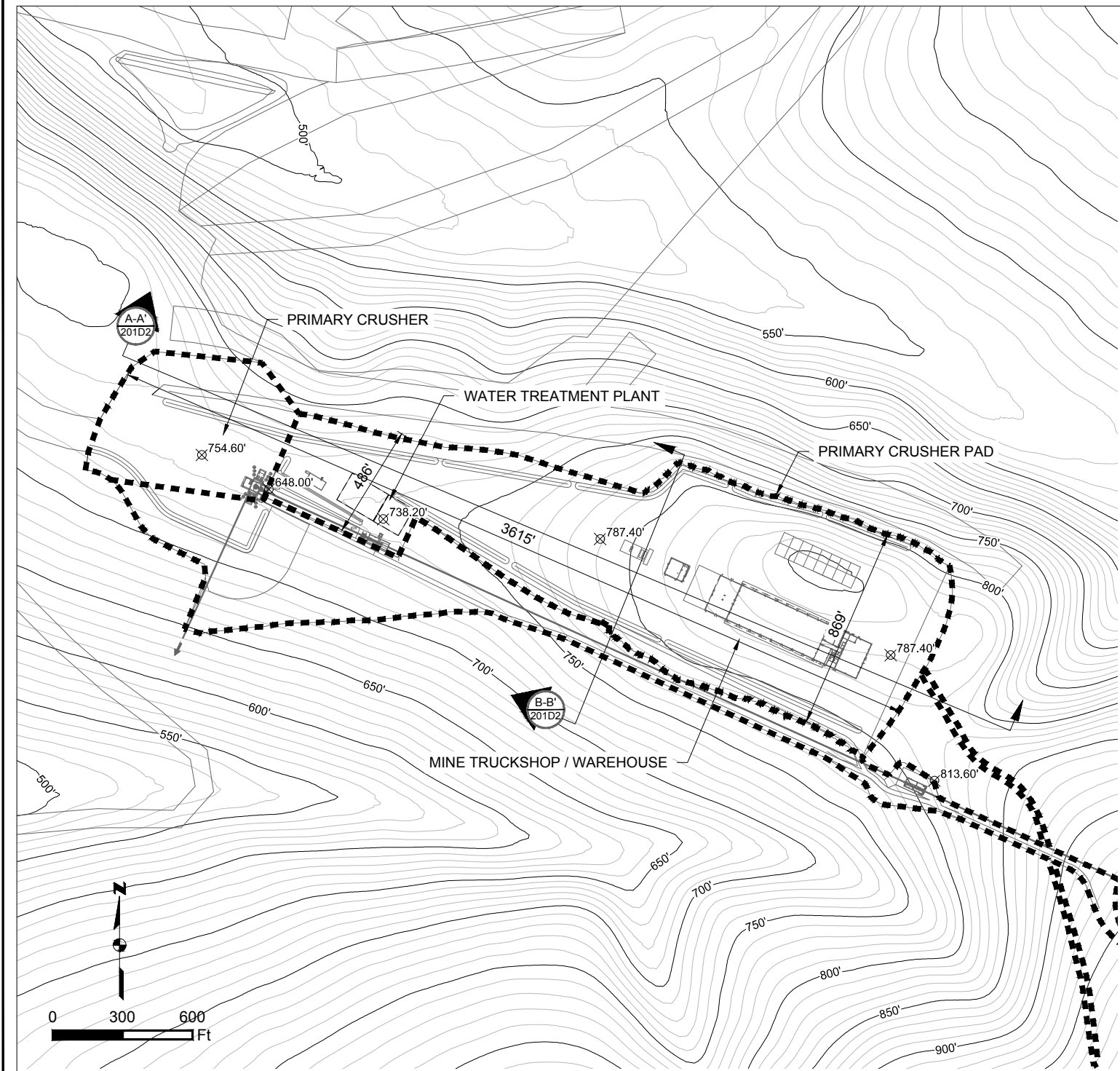
	Existing 10' Contours		Fill Area		Project Disturbance
	Existing 50' Contours		Existing Ground		
	Proposed 10' Contours		Proposed Grade		
	Proposed 50' Contours				

NOTE:
STOCKPILE WILL VARY IN SIZE AND SHAPE THROUGHOUT THE MINE LIFE. AT THE END OF MINE LIFE, ALL STOCKPILED ORE WILL BE FED TO THE PLANT AND THE STOCKPILE WILL NO LONGER EXIST.

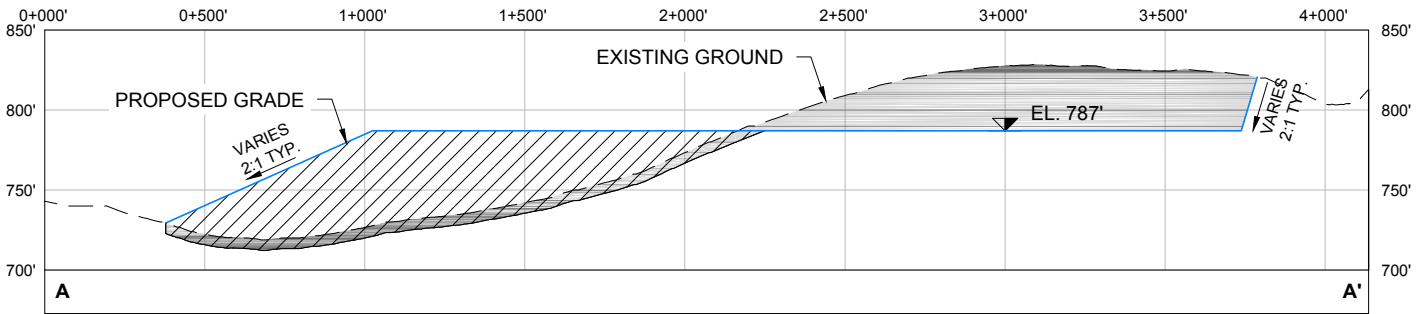
Associated Engineering Drawings
ORE_STOCKPILE_BERM_AND_SUMP.dwg (BGC) JUNE 2012

DONLIN GOLD PROJECT	
APPLICANT: Donlin Gold, LLC	
4720 Business Park Blvd., Suite G-25	
Anchorage, Alaska 99503	
NAD 1983 UTM Zone 4N	
SCALE: AS SHOWN	DATE: 9/11/2015

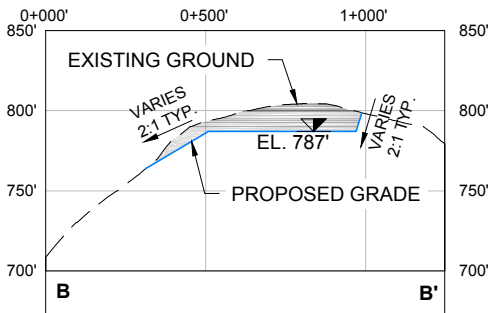
DRAWING TITLE:	
LONG TERM ORE STOCKPILE DETAIL	
FIGURE NO.	FILE NO.
MA-201D1	POA-1995-120



PRIMARY CRUSHER PAD PLAN
SCALE 1" = 600'



PRIMARY CRUSHER PAD SECTION A-A'
HORIZONTAL SCALE 1" = 600'
VERTICAL SCALE 1" = 120'



PRIMARY CRUSHER PAD SECTION B-B'
HORIZONTAL SCALE 1" = 600'
VERTICAL SCALE 1" = 120'

Existing 10' Contours	Fill Area	Project Disturbance
Existing 50' Contours	Cut Area	
	Existing Ground	
	Proposed Grade	

Associated Engineering Drawings
PRIMARY_CRUSHER_WATER_TREATMENT_PLANT_AND_MINE_TRUCKSHOP.dwg (BGC) JUN 2012; ExToCad_Water Treatment_polys.DWG (NovaGold) AUG 2015

DONLIN GOLD PROJECT APPLICANT: Donlin Gold, LLC 4720 Business Park Blvd., Suite G-25 Anchorage, Alaska 99503	
NAD 1983 UTM Zone 4N	
SCALE: AS SHOWN	DATE: 9/28/2015

DRAWING TITLE: PRIMARY CRUSHER PAD DETAIL	
FIGURE NO. MA-201D2	FILE NO. POA-1995-120