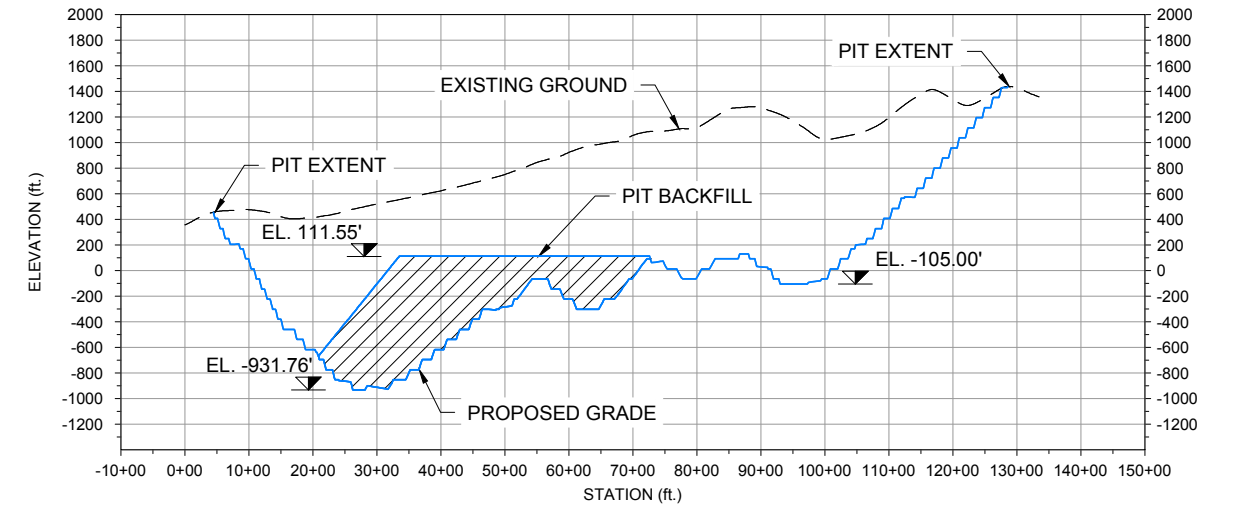
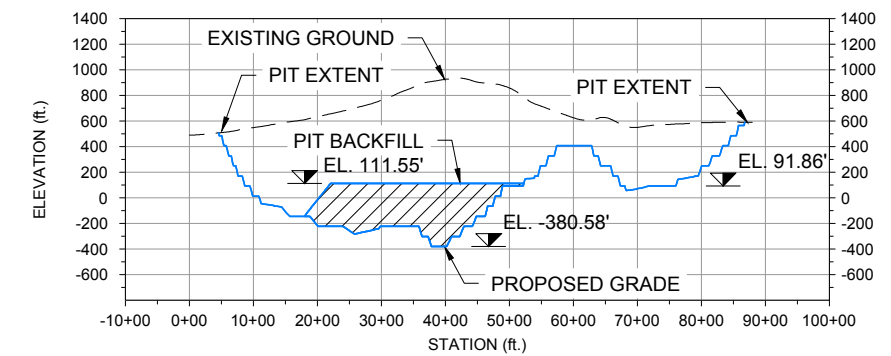


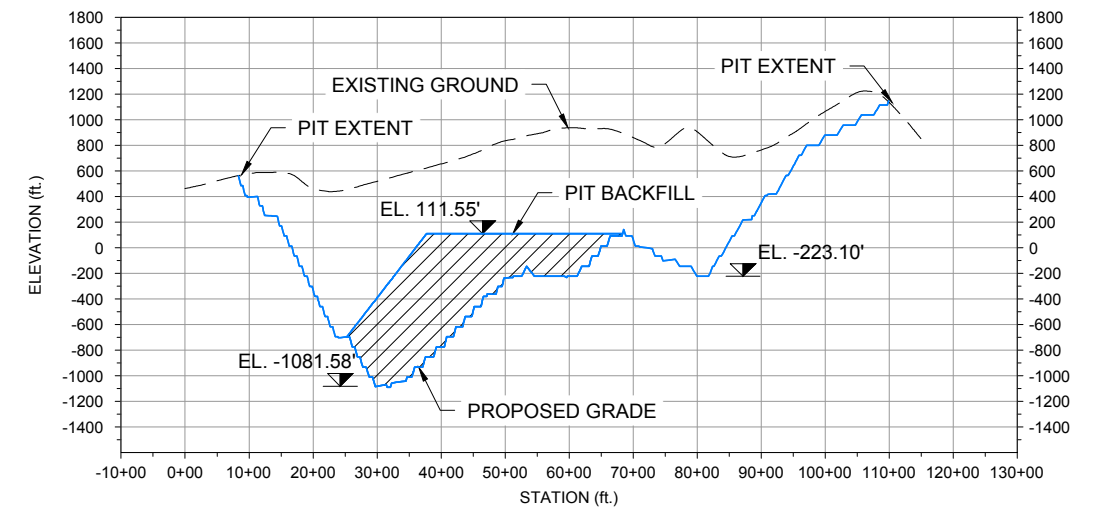
ULTIMATE PIT PLAN
SCALE 1" = 2000'



A-A'
202D1
ULTIMATE PIT SECTION A-A'
HORIZONTAL SCALE 1" = 3000'
VERTICAL SCALE 1" = 1500'



B-B'
202D1
ULTIMATE PIT SECTION B-B'
HORIZONTAL SCALE 1" = 3000'
VERTICAL SCALE 1" = 1500'



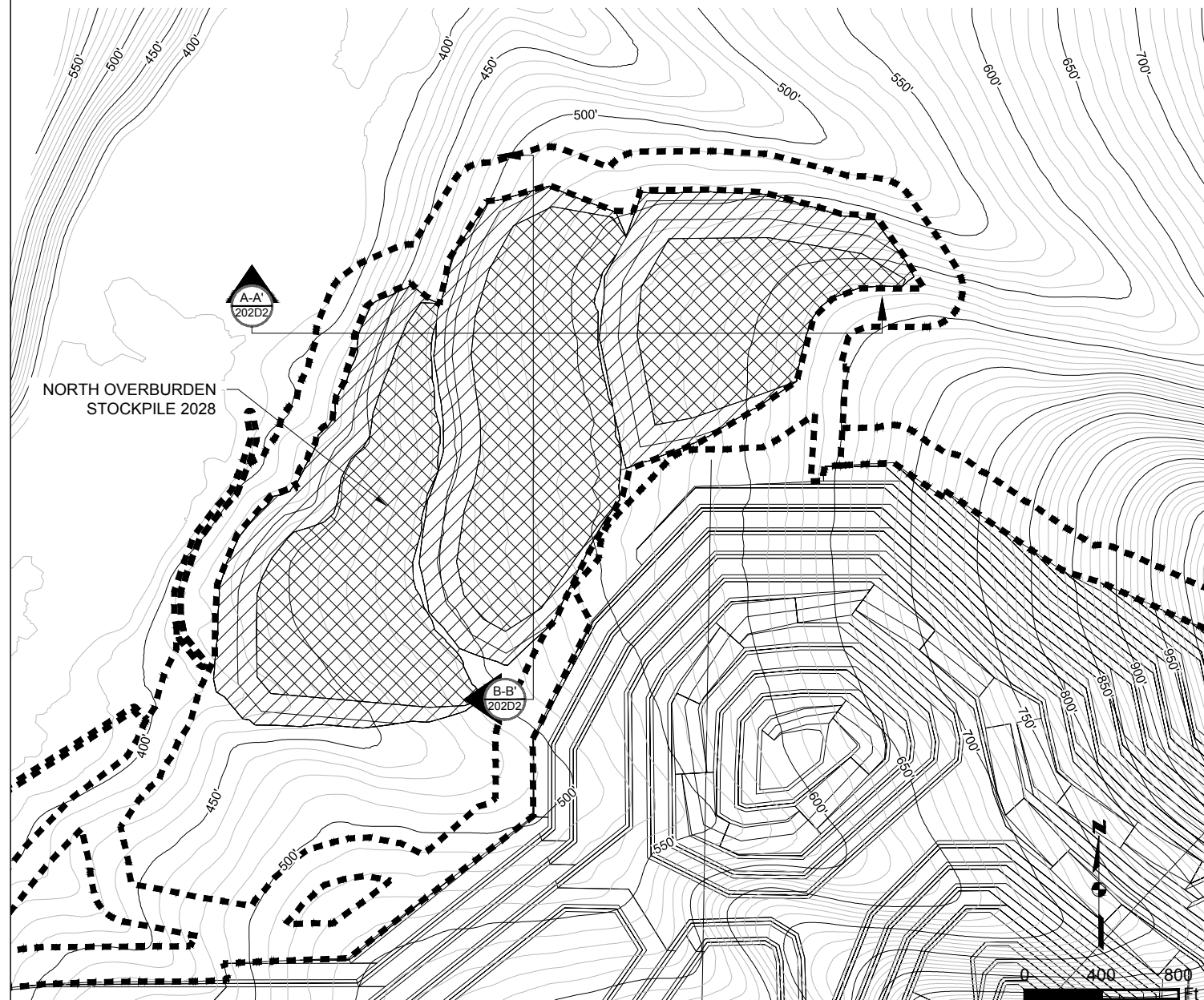
C-C'
202D1
ULTIMATE PIT SECTION C-C'
HORIZONTAL SCALE 1" = 3000'
VERTICAL SCALE 1" = 1500'

— Existing 10' Contours	▨ Fill Area	▣ Project Disturbance
— Existing 50' Contours	▩ Cut Area	
— Proposed 10' Contours	- - - Existing Ground	
— Proposed 50' Contours	— Proposed Grade	

Associated Engineering Drawings	
EOP_2036SP_6ft_Project.shp (ARCADIS) JUN 2012	

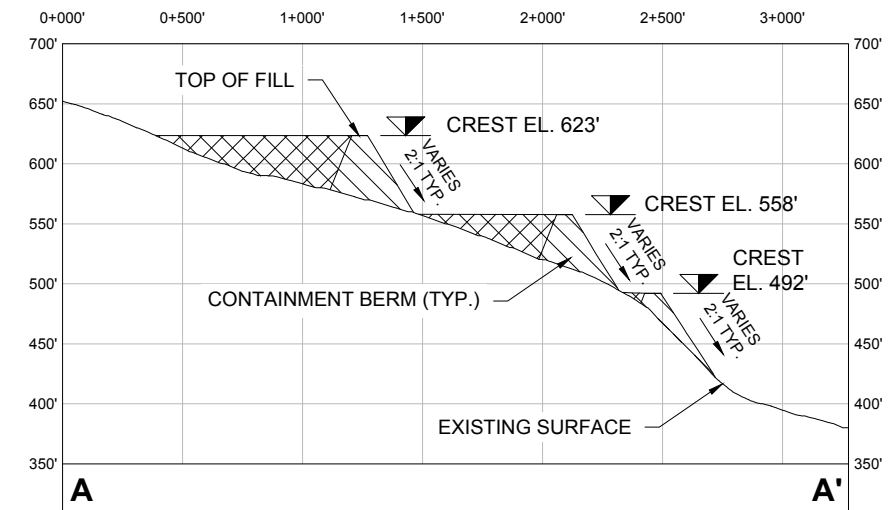
DONLIN GOLD PROJECT	
APPLICANT: Donlin Gold, LLC	
4720 Business Park Blvd., Suite G-25	
Anchorage, Alaska 99503	
NAD 1983 UTM Zone 4N	
SCALE: AS SHOWN	DATE: 9/11/2015

DRAWING TITLE:	
ULTIMATE PIT DETAIL	
FIGURE NO.	FILE NO.
MA-202D1	POA-1995-120

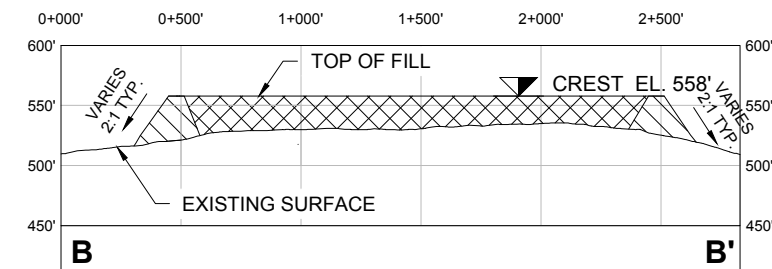


NORTH OVERBURDEN STOCKPILE 2028 PLAN
SCALE 1" = 800'

NOTE:
DRAINAGE AND EROSION CONTROLS
WILL BE DEVELOPED WITHIN THE
DISTURBANCE FOOTPRINT.



A-A NORTH OVERBURDEN STOCKPILE 2028 SECTION A-A'
HORIZONTAL SCALE 1" = 800'
VERTICAL SCALE 1" = 160'



B-B NORTH OVERBURDEN STOCKPILE 2028 SECTION B-B'
HORIZONTAL SCALE 1" = 800'
VERTICAL SCALE 1" = 160'

- Existing 10' Contours
- Existing 50' Contours
- Project Disturbance
- ⊗ Berm Fill
- ▨ Overburden Storage

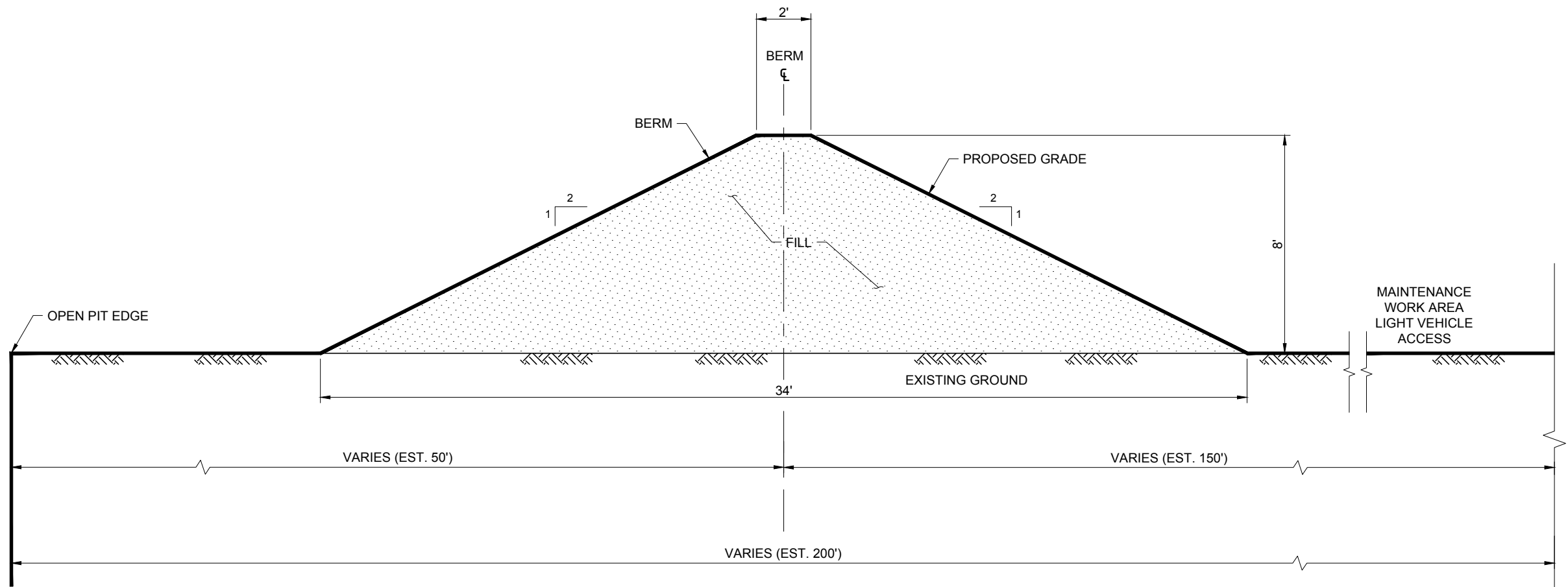
Associated Engineering Drawings
NOB_STOCKPILE.dwg (BGC) JUNE 2012

DONLIN GOLD PROJECT
APPLICANT: Donlin Gold, LLC
4720 Business Park Blvd., Suite G-25
Anchorage, Alaska 99503

DRAWING TITLE:
**NORTH OVERBURDEN
STOCKPILE 2028 DETAIL**

NAD 1983 UTM Zone 4N
SCALE: AS SHOWN DATE: 9/4/2015

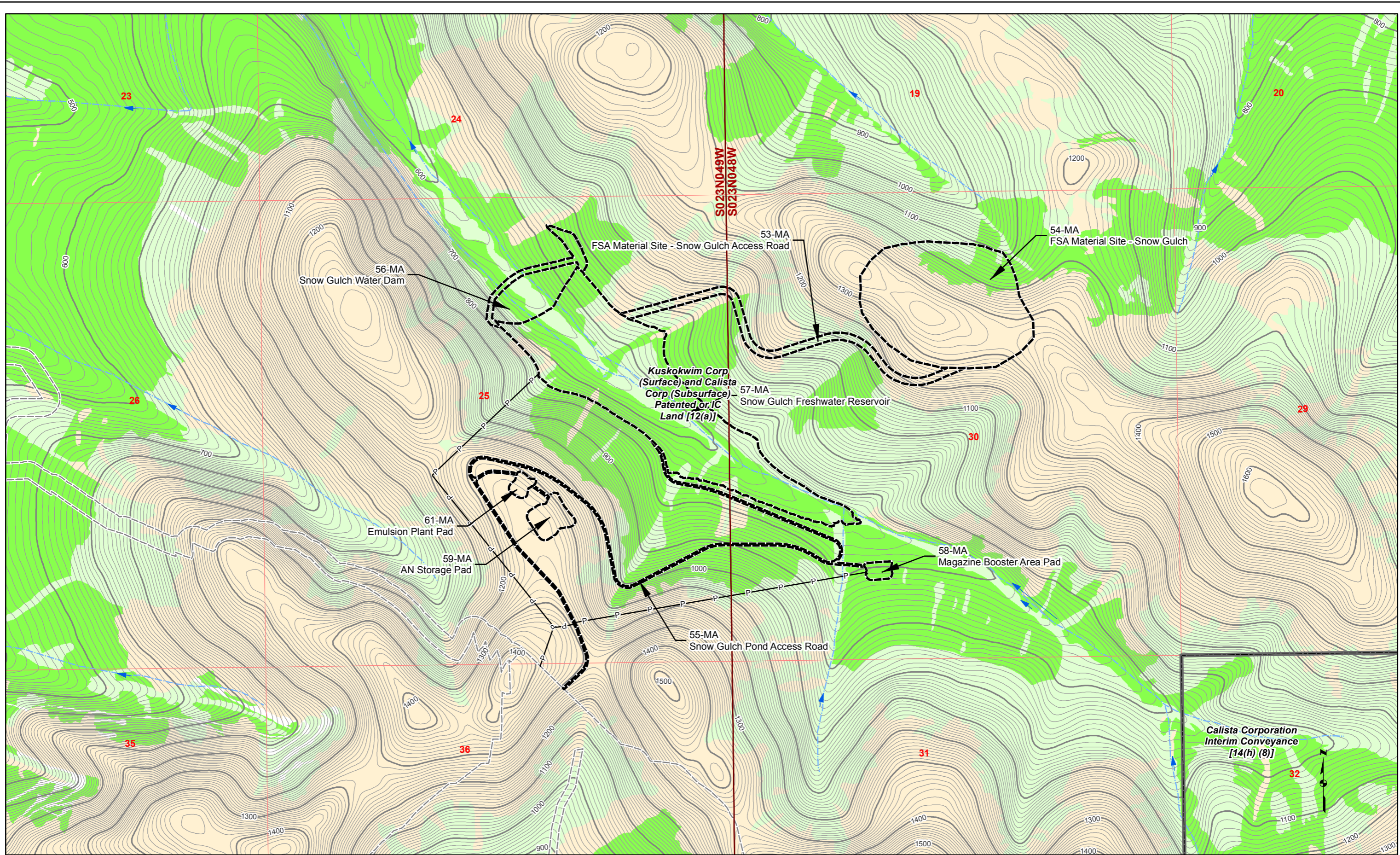
FIGURE NO. **MA-202D2** FILE NO. **POA-1995-120**



ULTIMATE PIT - SAFETY BERM TYPICAL SECTION
 A-A' 202D3 N.T.S.

- NOTES:
 1. ALL EXISTING ELEVATIONS ARE IN FEET UNLESS NOTED OTHERWISE.
 2. ALL PROPOSED ELEVATIONS AND DIMENSIONS ARE IN FEET UNLESS NOTED OTHERWISE.

Associated Engineering Drawings M01C-SC-BE_01.dwg (BAKER) OCT 2014		DONLIN GOLD PROJECT APPLICANT: Donlin Gold, LLC 4720 Business Park Blvd., Suite G-25 Anchorage, Alaska 99503		DRAWING TITLE: ULTIMATE PIT - SAFETY BERM DETAIL	
		SCALE: AS SHOWN	DATE: 9/30/2015	FIGURE NO. MA-202D3	FILE NO. POA-1995-120



- | | | | | |
|---------------------------|--------|----------|-----------------------|-----------------------|
| Land Status | Mosaic | Waters | 100' Contour | Proposed Jungjuk Road |
| Road Milepost | Upland | Wetlands | 10' Contour | Unnamed River/Stream |
| Project Disturbance Limit | | | -P- Powerline | Named River/Stream |
| | | | Stream Flow Direction | |

Associated Engineering Drawings

0 750 1,500 Feet

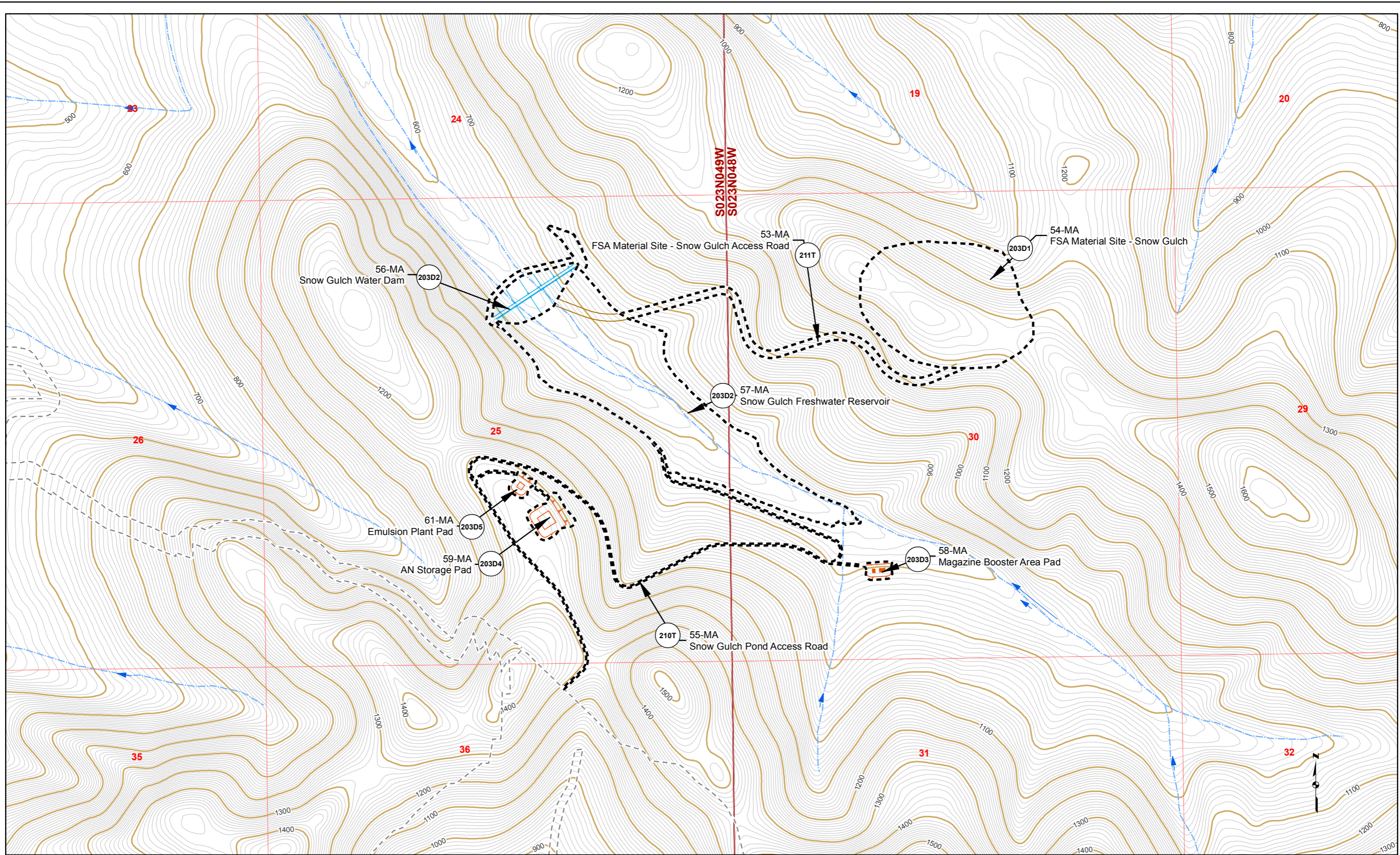
DONLIN GOLD PROJECT
 APPLICANT: Donlin Gold, LLC
 4720 Business Park Blvd., Suite G-25
 Anchorage, Alaska 99503

NAD 1983 UTM Zone 4N

SCALE: 1 inch = 1,000 feet DATE: 10/5/2015

DRAWING TITLE: **PLAN VIEW MINE AREA WETLANDS MAP**

FIGURE NO. **MA-203A** FILE NO. **POA-1995-120**



- Proposed Jungjuk Road
- Road Milepost
- 10' Contour
- 100' Contour
- Stream Flow Direction
- Cross Section
- Project Disturbance This Sheet
- Proposed Disturbance (Other Sheets)
- Unnamed River/Stream
- Named River/Stream
- Figure Detail Reference

Associated Engineering Drawings

0 500 1,000
 Feet

DONLIN GOLD PROJECT
 APPLICANT: Donlin Gold, LLC
 4720 Business Park Blvd., Suite G-25
 Anchorage, Alaska 99503

NAD 1983 UTM Zone 4N

SCALE: 1 inch = 1,000 feet DATE: 10/5/2015

DRAWING TITLE: **PLAN VIEW MINE AREA ENGINEERING MAP**

FIGURE NO. **MA-203B** FILE NO. **POA-1995-120**