

VICINITY MAP

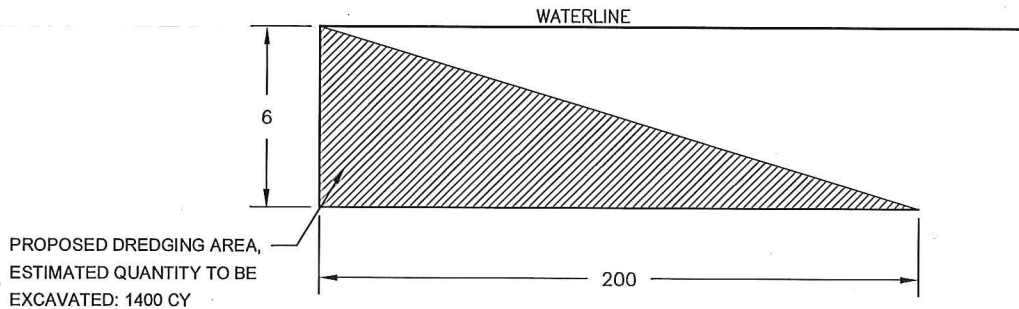
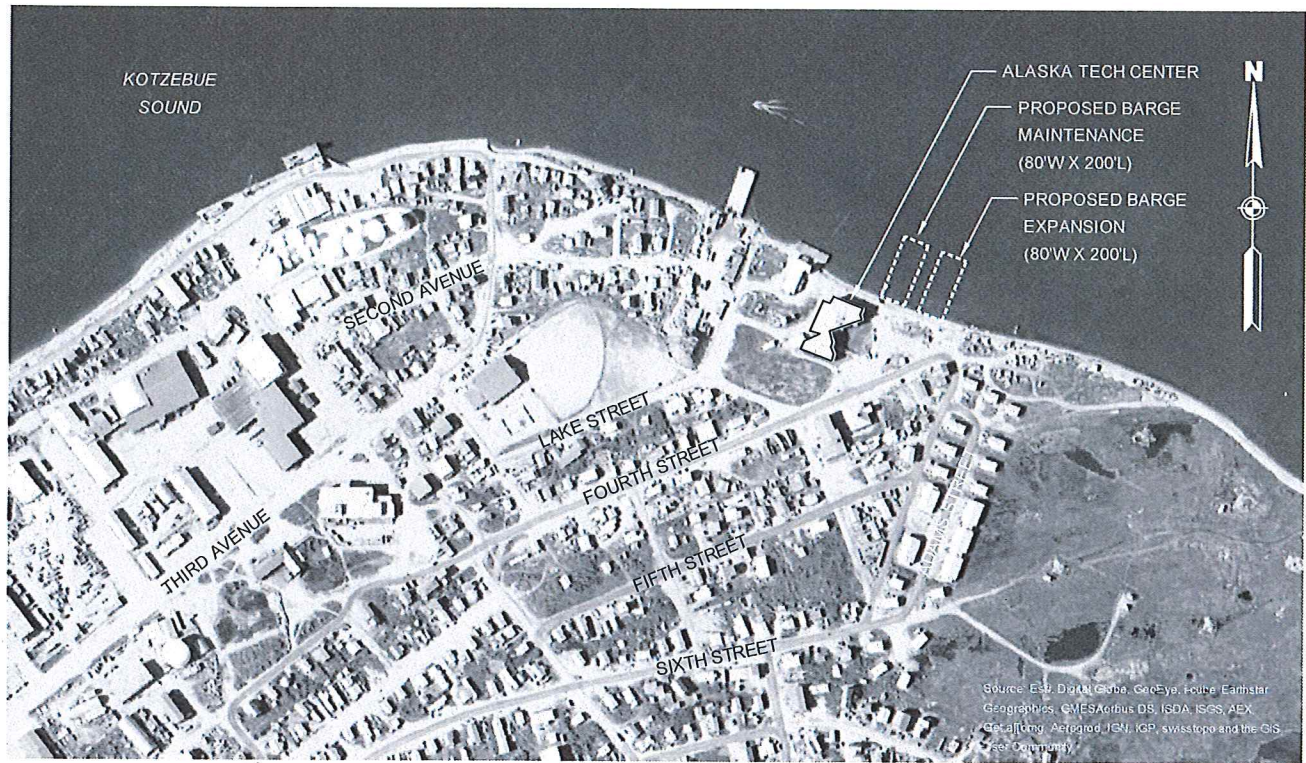
Source: USGS Map KOTZEBUE (D-2)
 Located Within T.17N., R.18W., K.R.M., AK.
 Kotzebue Recording District

Project: Kotzebue Barge Landing Improvements
 Permit No.: POA-2006-2003 (MOD)

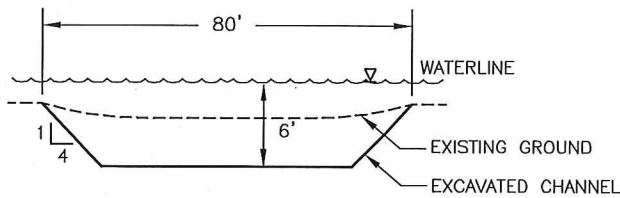
LOCATION & VICINITY MAP

Application by: Kikitagruk Inupiat Corporation
 Location: Kotzebue, Alaska
 Section: 2, T17N, R18W
 Kateel River Meridian
 Lat: 66.9034°N, Long: 162.5699°W
 USGS: Kotzebue (D-2), AK
 Water Body: Kotzebue Sound
 DATE: April 2015 (MOD) SHEET 1 OF 3

U:\2047046000\drawing\Envir\Figures\ACOE-Mod\2047046000_ACOE_FIG-01_LocVicMap.dwg



1 KOTZEBUE TECH CENTER LANDING PROFILE
 2 NOT TO SCALE, VERTICAL EXAGGERATION (x10)



2 PROPOSED BARGE LANDING EXPANSION - TYPICAL SECTION
 2 NOT TO SCALE

Project: Kotzebue Barge Landing Improvements
 Permit No.: POA-2006-2003 (MOD)

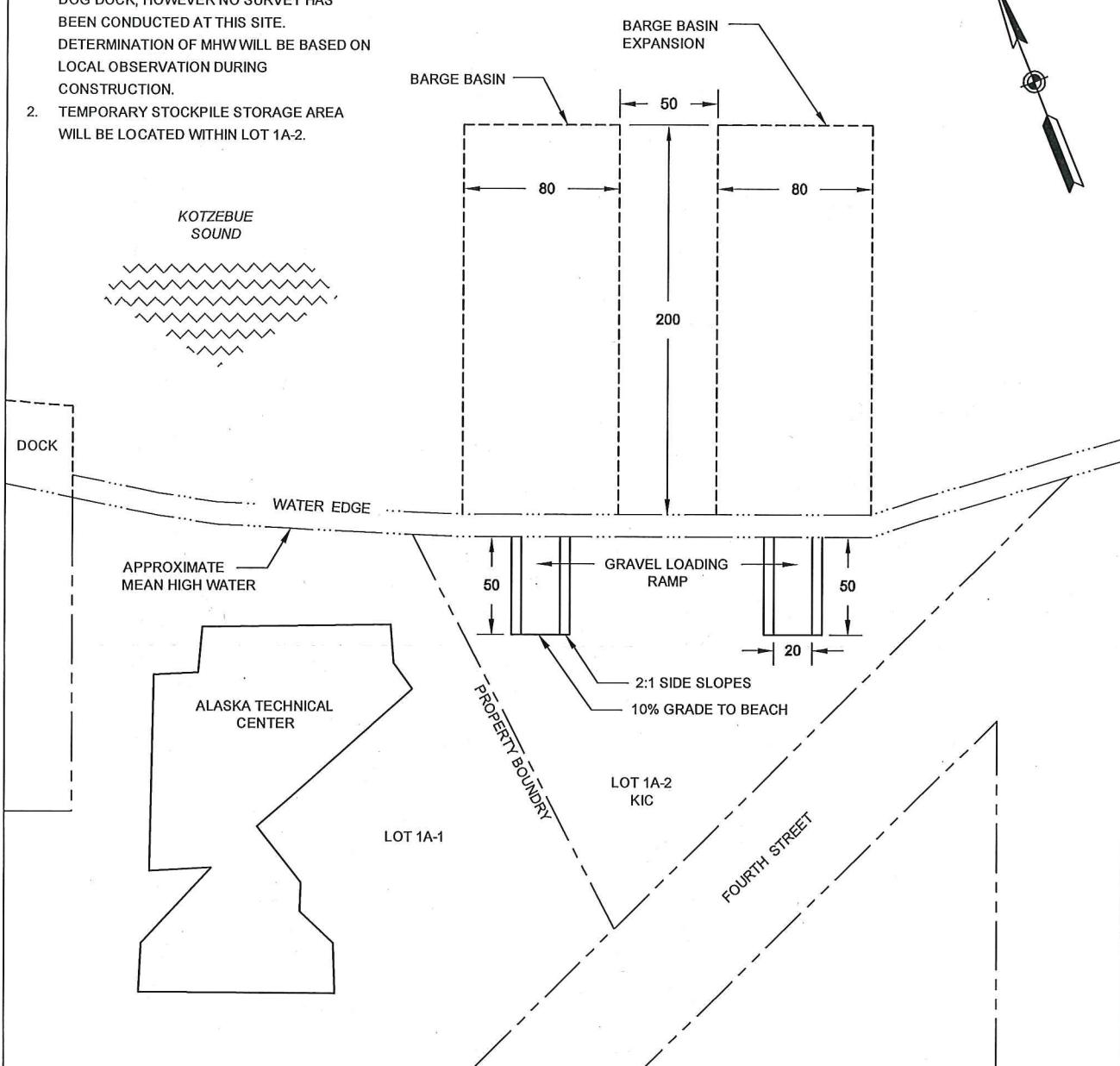
SITE PLAN & TYPICAL SECTIONS

Application by: Kikiktagruk Inupiat Corporation
 Location: Kotzebue, Alaska
 Section: 2, T17N, R18W
 Kateel River Meridian
 Lat: 66.9034°N, Long: 162.5699°W
 USGS: Kotzebue (D-2), AK
 Water Body: Kotzebue Sound
 DATE: April 2015 (MOD) SHEET 2 OF X

U:\2047046000\drawing\Envir\Figures\ACOE-Mod\2047046000_ACOE_FIG-02_SitePlan.dwg

NOTES

1. MEAN HIGH WATER IS ESTIMATED AT .79 FEET BASED ON TIDAL DATUM AT THE RED DOG DOCK, HOWEVER NO SURVEY HAS BEEN CONDUCTED AT THIS SITE. DETERMINATION OF MHW WILL BE BASED ON LOCAL OBSERVATION DURING CONSTRUCTION.
2. TEMPORARY STOCKPILE STORAGE AREA WILL BE LOCATED WITHIN LOT 1A-2.



U:\2047046000\drawing\Envir\Figures\ACOE-Mod\2047046000_ACOE_FIG-03_Schematic.dwg

1 **TECH CENTER BARGE LANDING EXPANSION SCHEMATIC**
 3 NOT TO SCALE

Project: Kotzebue Barge Landing Improvements
 Permit No.: POA-2006-2003 (MOD)
**TECH CENTER BARGE LANDING
 EXPANSION SITE PLAN SCHEMATIC**
 Application by: Kikiktagruk Inupiat Corporation
 Location: Kotzebue, Alaska
 Section: 2, T17N, R18W
 Kateel River Meridian
 Lat: 66.9034°N, Long: 162.5699°W
 USGS: Kotzebue (D-2), AK
 Water Body: Kotzebue Sound
 DATE: April 2015 (MOD) SHEET 3 OF 3