



**U.S. ARMY CORPS OF ENGINEERS
REGULATORY PROGRAM
APPROVED JURISDICTIONAL DETERMINATION FORM (INTERIM)
NAVIGABLE WATERS PROTECTION RULE**

I. ADMINISTRATIVE INFORMATION

Completion Date of Approved Jurisdictional Determination (AJD): 9/9/2020

ORM Number: POA-1996-00211

Associated JDs: N/A

Review Area Location¹: State/Territory: Alaska City: Delta Junction County/Parish/Borough: Enter.

Center Coordinates of Review Area: Latitude 64.4508 N Longitude 144.9413 W; Latitude 64.4492 N Longitude 144.9408 W; Latitude 64.4584 N Longitude 144.9149 W; Latitude 64.4488 N Longitude 144.9380 W

II. FINDINGS

A. Summary: Check all that apply. At least one box from the following list MUST be selected. Complete the corresponding sections/tables and summarize data sources.

- The review area is comprised entirely of dry land (i.e., there are no waters or water features, including wetlands, of any kind in the entire review area). Rationale: N/A or describe rationale.
- There are “navigable waters of the United States” within Rivers and Harbors Act jurisdiction within the review area (complete table in Section II.B).
- There are “waters of the United States” within Clean Water Act jurisdiction within the review area (complete appropriate tables in Section II.C).
- There are waters or water features excluded from Clean Water Act jurisdiction within the review area (complete table in Section II.D).

B. Rivers and Harbors Act of 1899 Section 10 (§ 10)²

§ 10 Name	§ 10 Size	§ 10 Criteria	Rationale for § 10 Determination
N/A.	N/A.	N/A.	N/A.

C. Clean Water Act Section 404

Territorial Seas and Traditional Navigable Waters ((a)(1) waters): ³			
(a)(1) Name	(a)(1) Size	(a)(1) Criteria	Rationale for (a)(1) Determination
N/A.	N/A.	N/A.	N/A.

Tributaries ((a)(2) waters):			
(a)(2) Name	(a)(2) Size	(a)(2) Criteria	Rationale for (a)(2) Determination
N/A.	N/A.	N/A.	N/A.

Lakes and ponds, and impoundments of jurisdictional waters ((a)(3) waters):			
(a)(3) Name	(a)(3) Size	(a)(3) Criteria	Rationale for (a)(3) Determination
N/A.	N/A.	N/A.	N/A.

Adjacent wetlands ((a)(4) waters):			
(a)(4) Name	(a)(4) Size	(a)(4) Criteria	Rationale for (a)(4) Determination
N/A.	N/A.	N/A.	N/A.

¹ Map(s)/figure(s) are attached to the AJD provided to the requestor.

² If the navigable water is not subject to the ebb and flow of the tide or included on the District’s list of Rivers and Harbors Act Section 10 navigable waters list, do NOT use this document to make the determination. The District must continue to follow the procedure outlined in 33 CFR part 329.14 to make a Rivers and Harbors Act Section 10 navigability determination.

³ A stand-alone TNW determination is completed independently of a request for an AJD. A stand-alone TNW determination is conducted for a specific segment of river or stream or other type of waterbody, such as a lake, where upstream or downstream limits or lake borders are established. A stand-alone TNW determination should be completed following applicable guidance and should NOT be documented on the AJD Form.



**U.S. ARMY CORPS OF ENGINEERS
REGULATORY PROGRAM
APPROVED JURISDICTIONAL DETERMINATION FORM (INTERIM)
NAVIGABLE WATERS PROTECTION RULE**

D. Excluded Waters or Features

Excluded waters ((b)(1) – (b)(12)): ⁴				
Exclusion Name	Exclusion Size		Exclusion ⁵	Rationale for Exclusion Determination
Non-adjacent wetland	11.0	acre(s)	(b)(1) Non-adjacent wetland.	These four areas at Pogo Mine listed as; Pond 1, Pond 2, Blue Tube Bench Expansion, and Exploration Laydown 2, are not connected to Goodpaster River and do not contribute surface water to the river. Access roads sever hydrological connectivity to other wetlands and rivers.

III. SUPPORTING INFORMATION

A. Select/enter all resources that were used to aid in this determination and attach data/maps to this document and/or references/citations in the administrative record, as appropriate.

Information submitted by, or on behalf of, the applicant/consultant: [Applicant provided aerial imagery \(May 18, 2020\)](#)

This information **is** sufficient for purposes of this AJD.

Rationale: [N/A](#)

Data sheets prepared by the Corps: [Title\(s\) and/or date\(s\)](#).

Photographs: [Aerial: Google Earth Pro 2010 Imagery; Digital Globe 2020 Imagery](#)

Corps site visit(s) conducted on: [Date\(s\)](#).

Previous Jurisdictional Determinations (AJDs or PJDs): [ORM Number\(s\) and date\(s\)](#).

Antecedent Precipitation Tool: [provide detailed discussion in Section III.B.](#)

USDA NRCS Soil Survey: [Not available](#)

USFWS NWI maps: [Not available](#)

USGS topographic maps: [Big Delta B-2 1:63360](#)

Other data sources used to aid in this determination:

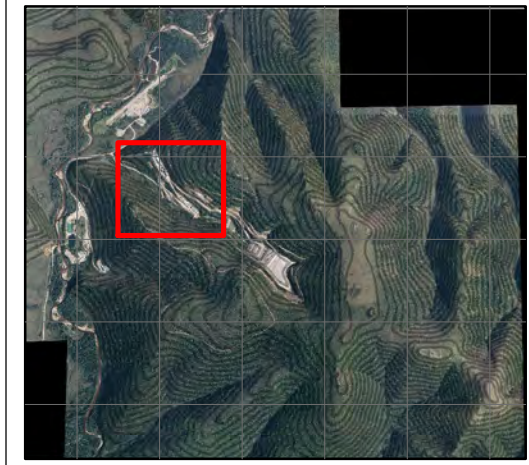
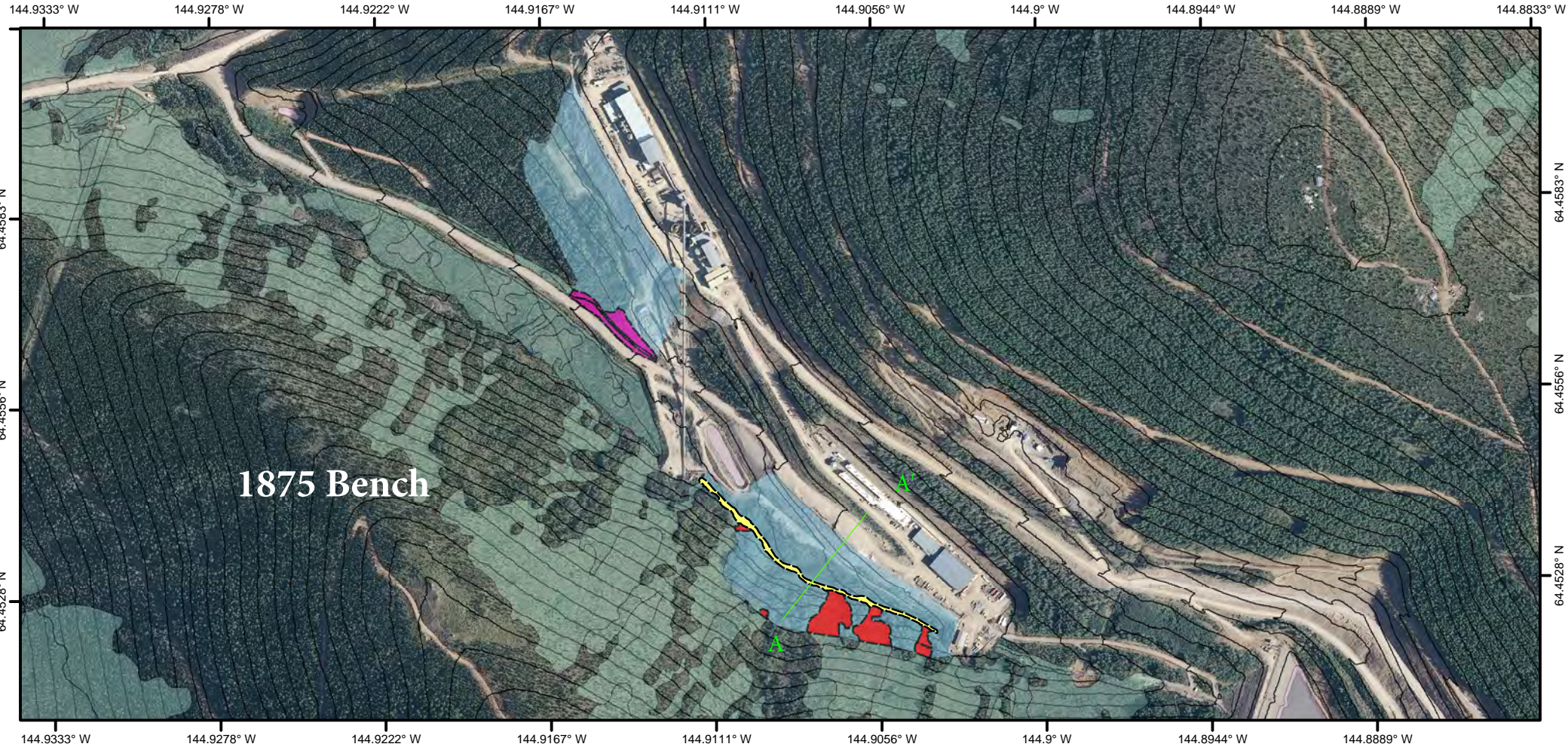
Data Source (select)	Name and/or date and other relevant information
USGS Sources	N/A.
USDA Sources	N/A.
NOAA Sources	N/A.
USACE Sources	N/A.
State/Local/Tribal Sources	N/A.
Other Sources	Wetland Determination conducted in 2014 ; DGGS Elevation Dataset 60m

B. Typical year assessment(s): [N/A](#)

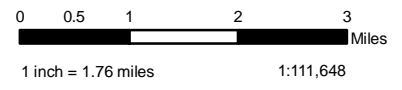
C. Additional comments to support AJD: [N/A](#)

⁴ Some excluded waters, such as (b)(2) and (b)(4), may not be specifically identified on the AJD form unless a requestor specifically asks a Corps district to do so. Corps districts may, in case-by-case instances, choose to identify some or all of these waters within the review area.

⁵ Because of the broad nature of the (b)(1) exclusion and in an effort to collect data on specific types of waters that would be covered by the (b)(1) exclusion, four sub-categories of (b)(1) exclusions were administratively created for the purposes of the AJD Form. These four sub-categories are not new exclusions, but are simply administrative distinctions and remain (b)(1) exclusions as defined by the NWPR.



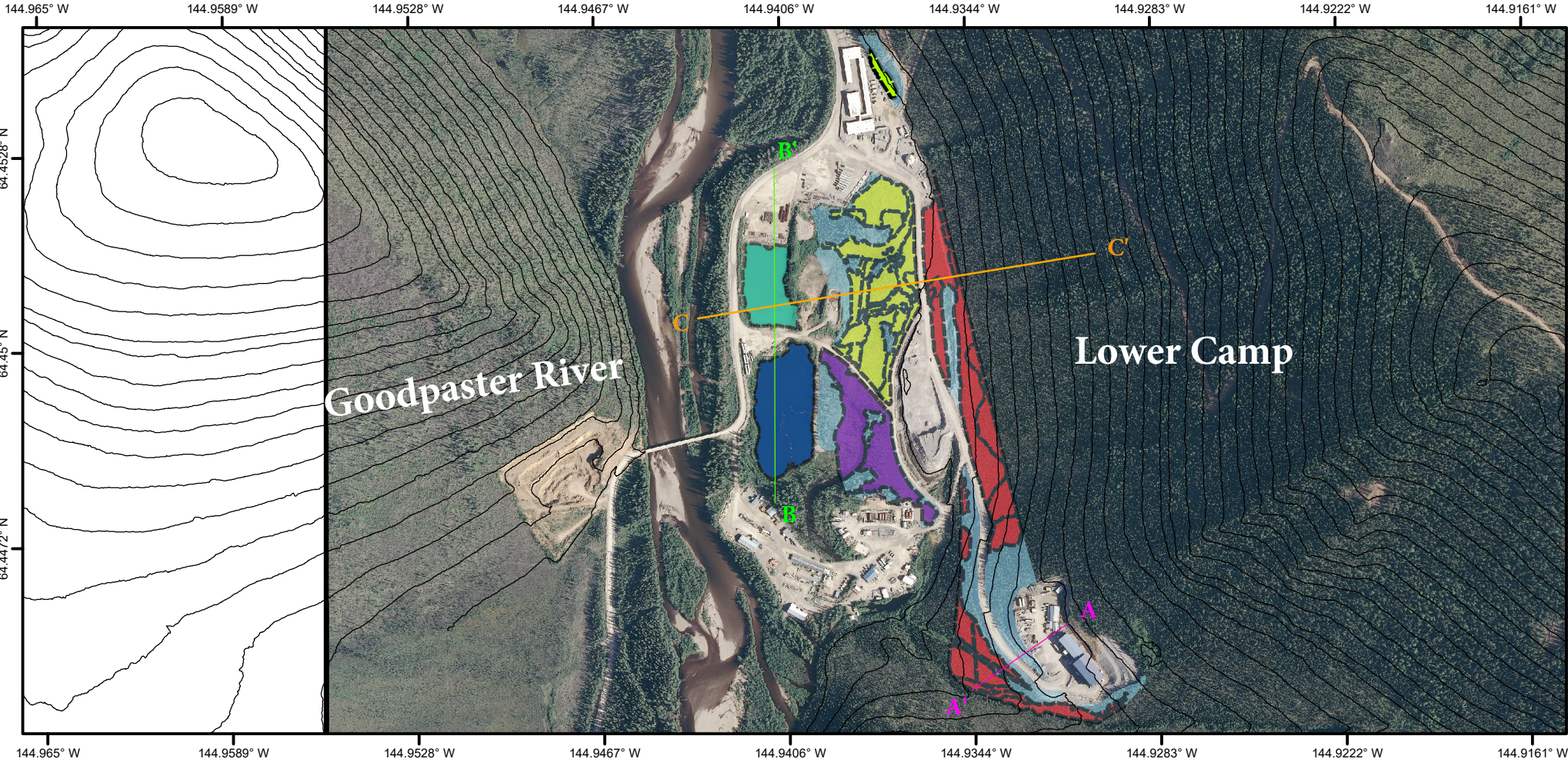
- Cut Area
- Liese Creek Culvert Mitigation Area
- Liese Valley Wetland Disturbance Area
- Mill Bench Extension Wetland Disturbance Area
- Mill Bench Upland Disturbance Area
- 1875 Upland Disturbance
- Ponds
- Relatively Permanent Water
- Wetland



1875 Bench

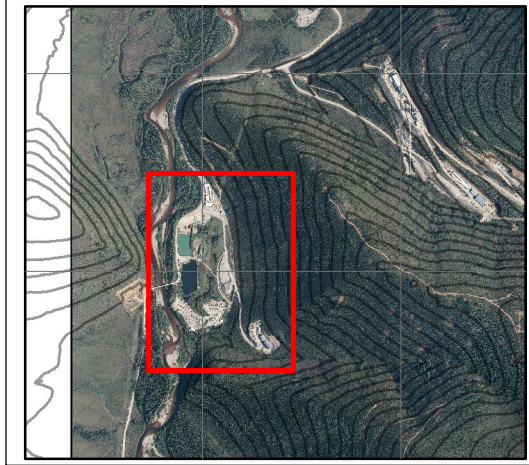
Applicant: Nothern Star (Pogo) LLC
 3204 International Street
 Fairbanks, AK 99701

POA-1996-00211
Northern Star (Pogo) LLC
Goodpaster River
May 18, 2020
Sheet 4 of 10



Goodpaster River

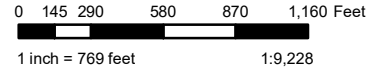
Lower Camp



- Cut A
- Cut B
- Cut C
- Exploration Dept Laydown Yard
- Warehouse Laydown Yard Disturbance
- Road 8 Disturbance
- Gravel Pond 1 Disturbance
- Gravel Pond 2 Disturbance
- D Wing Wetland Pad Disturbance
- D Wing Upland Disturbance
- Road 8 Upland Disturbance
- Laydown Extension 1 Upland Disturbance
- Laydown Extension 2 Upland Disturbance



NORTHERN STAR
RESOURCES LIMITED



Lower Camp

Applicant: Northern Star (Pogo) LLC
3204 International Street
Fairbanks, AK 99701

POA-1996-00211
Northern Star (Pogo) LLC
Goodpaster River
May 18, 2020
Sheet 8 of 10