

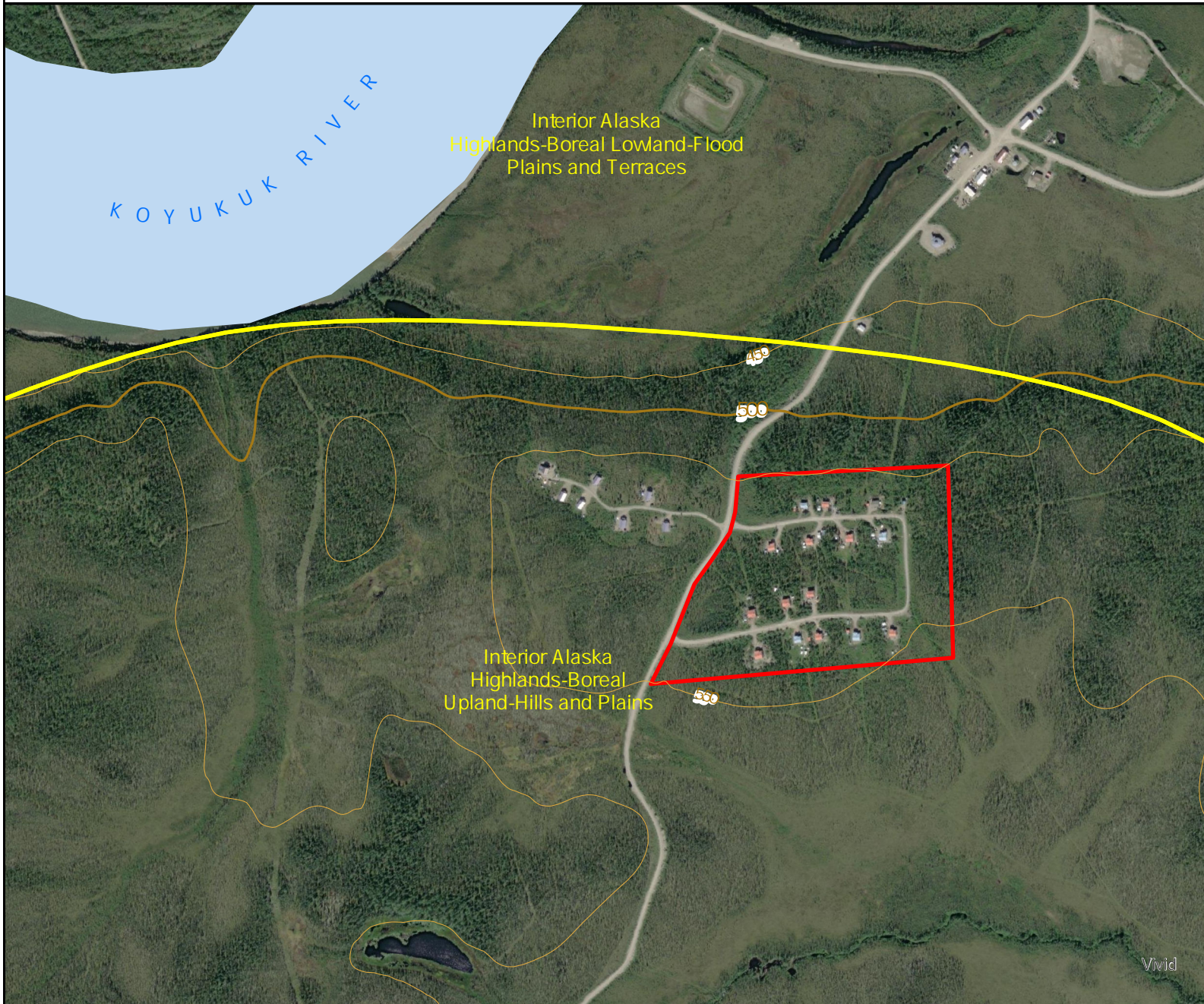
The review area includes Block 1 Lots 1-4, Block 3 Lots 1-11, and Block 3 Lots 1-6 of the New Allakaket Subdivision Phase I. The property consists of spruce (*Picea spp.*) forest on a south-aspect bluff, approximately 150 feet higher in elevation than the Koyukuk River. Aerial imagery, viewed over multiple years and multiple seasons, shows no signs of surface water or hydrology patterns in the review area. NHD shows no waterbodies. There's also a clear contrast between the upland forest signature and the surrounding wetlands that slope to the river. The review area is at least 30 feet higher in elevation than the nearest obvious wetland signature. With a south aspect slope, it's unlikely the soils contain permafrost to perch water. Additionally, the Allakaket Community Map shows that the review area falls outside of the record flood elevation of 497 feet which is documented in the USACE report "Alaska Communities Flood Hazard Data 2007". Therefore, based on the available data, the subject property does not appear to contain waters of the U.S., including wetlands, under the Corps of Engineers (Corps) regulatory jurisdiction.






Gwen Jacobson
Regulatory Specialist
North Central Section

October 19, 2022

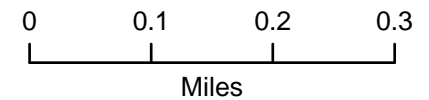
Date



MAP FEATURES

-  Review Area
-  USDA STATSGO
-  NHD Waterbody

Lat: 66.539841
 Long: -152.654485
 Scale: 1:10,000



Last updated 10/19/2022