



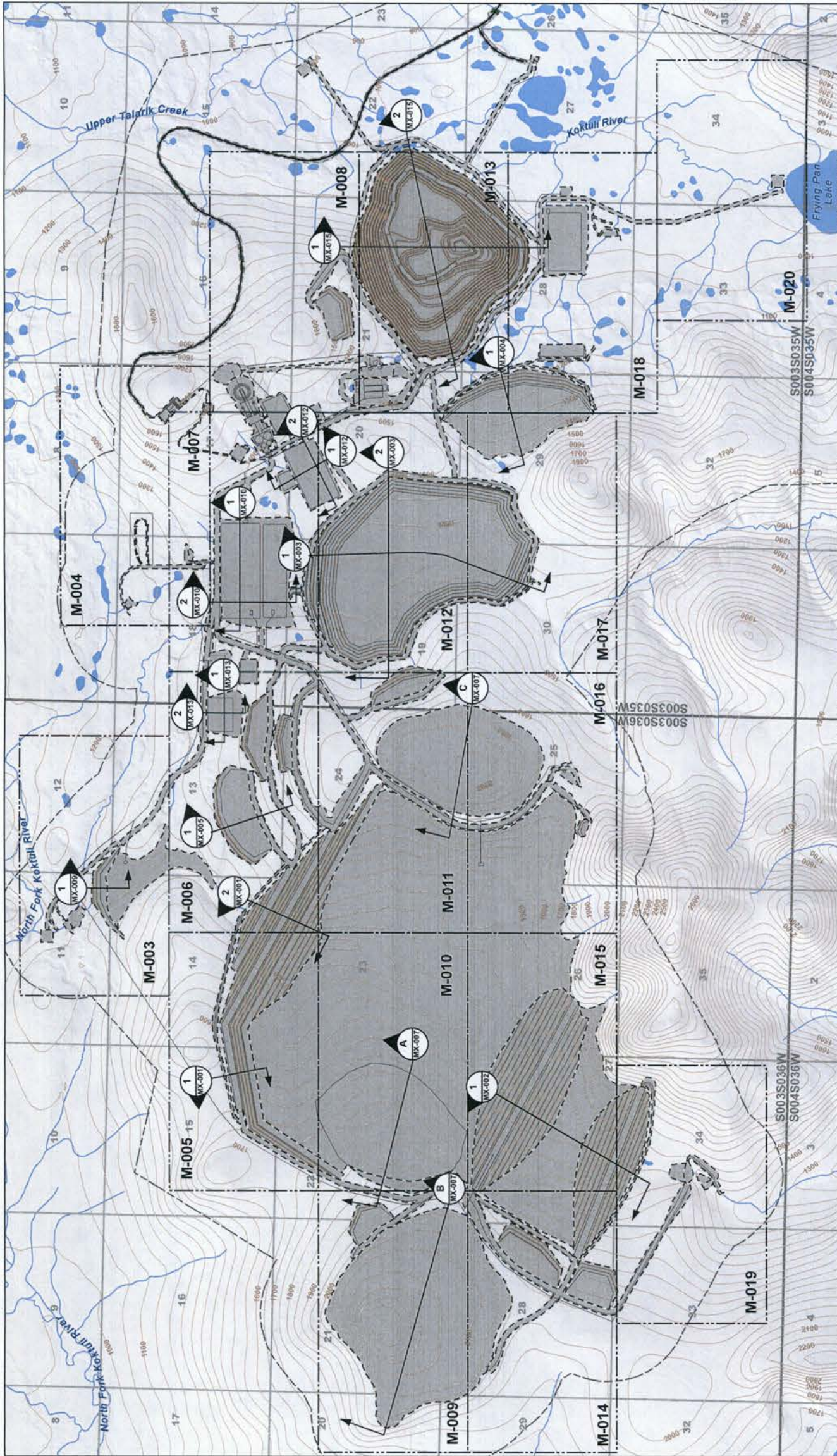
- NOTES:**
- COORDINATE GRID IS UTM NAD83, ALASKA STATE PLAINS, ZONE 5.
 - CONTOUR INTERVAL IS 25 FEET.
 - DIMENSIONS AND ELEVATIONS ARE IN FEET, UNLESS NOTED OTHERWISE.
 - OPEN PIT OUTLINE PROVIDED BY P.F.P. SEPT. 28, 2017.
 - TAILINGS STORAGE FACILITY SIZED FOR ESTIMATED VOLUME OF TAILINGS MATERIAL WITH ALLOWANCE FOR PROBABLE MAXIMUM FLOOD PLUS 20 FT OF ADDITIONAL CONTAINMENT.
 - ACCESS ROAD PROVIDED BY RECON, L.C. ROAD CONNECTION TO MILL SITE COMPLETED BY AUSSENCO.
 - MILL SITE AND ANCILLARY FACILITIES PROVIDED BY AUSSENCO ON SEPT. 22, 2017.
 - HAUL, SERVICE AND ACCESS ROAD CUT AND FILL EXTENTS SHOWN INCLUDE ALLOWANCE FOR BERM, DITCHES AND POWER POLES, AS REQUIRED.
 - POWER POLE SPACING TO BE ASSUMED AT 300 FT AND WILL FOLLOW ROAD ALIGNMENT, UNLESS SHOWN OTHERWISE.

DISCLAIMER - THIS DRAWING WAS PREPARED BY KNIGHT RIDING LTD. FOR THE ACCOUNT OF THE CLIENT LISTED ON THE DRAWING. KNIGHT RIDING LTD. HAS CONDUCTED VISUAL INSPECTIONS AND VERIFIED THE BEST AVAILABLE INFORMATION AT THE TIME OF PREPARATION. ANY USE, WHICH IS THIRD PARTY, IS AT THE USER'S RISK. KNIGHT RIDING LTD. DOES NOT WARRANT, REPRESENT OR GUARANTEE THE ACCURACY OF THE INFORMATION PROVIDED HEREON. KNIGHT RIDING LTD. ACCEPTS NO RESPONSIBILITY FOR ANY ERRORS OR OMISSIONS IN THIS DRAWING. ANY ERRORS OR OMISSIONS IN THIS DRAWING COULD BE THE RESULT OF INADEQUATE INFORMATION PROVIDED TO KNIGHT RIDING LTD. OR THE DRAWING COULD BE UNCONTROLLED AND MAY NOT BE THE MOST RECENT VERSION OF THIS DRAWING.

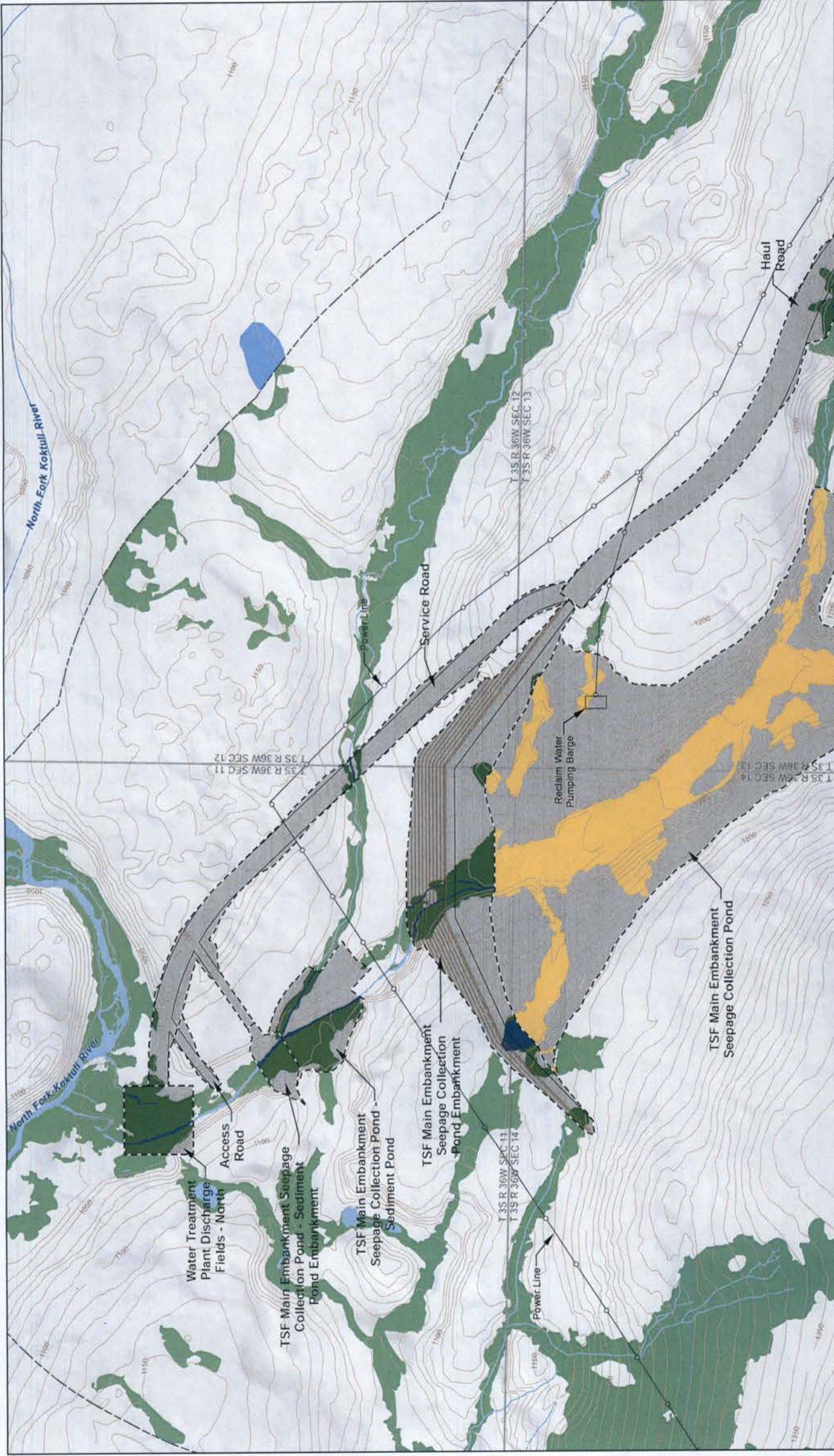


PEBBLE PROJECT	
APPLICANT: PEBBLE LIMITED PARTNERSHIP	
DRAWING TITLE: PLAN VIEW MINE AREA GENERAL ARRANGEMENT	
LAT. LONG. OF MINE 69°55'12.9" N 156°18'23.3" W	PROPOSED ACTIVITY: MINERAL DEVELOPMENT
WATERWAY: KOKTULI RIVER	FILE NO. POA-2017-271
DATE: DECEMBER 2017	FIGURE NO. M-001

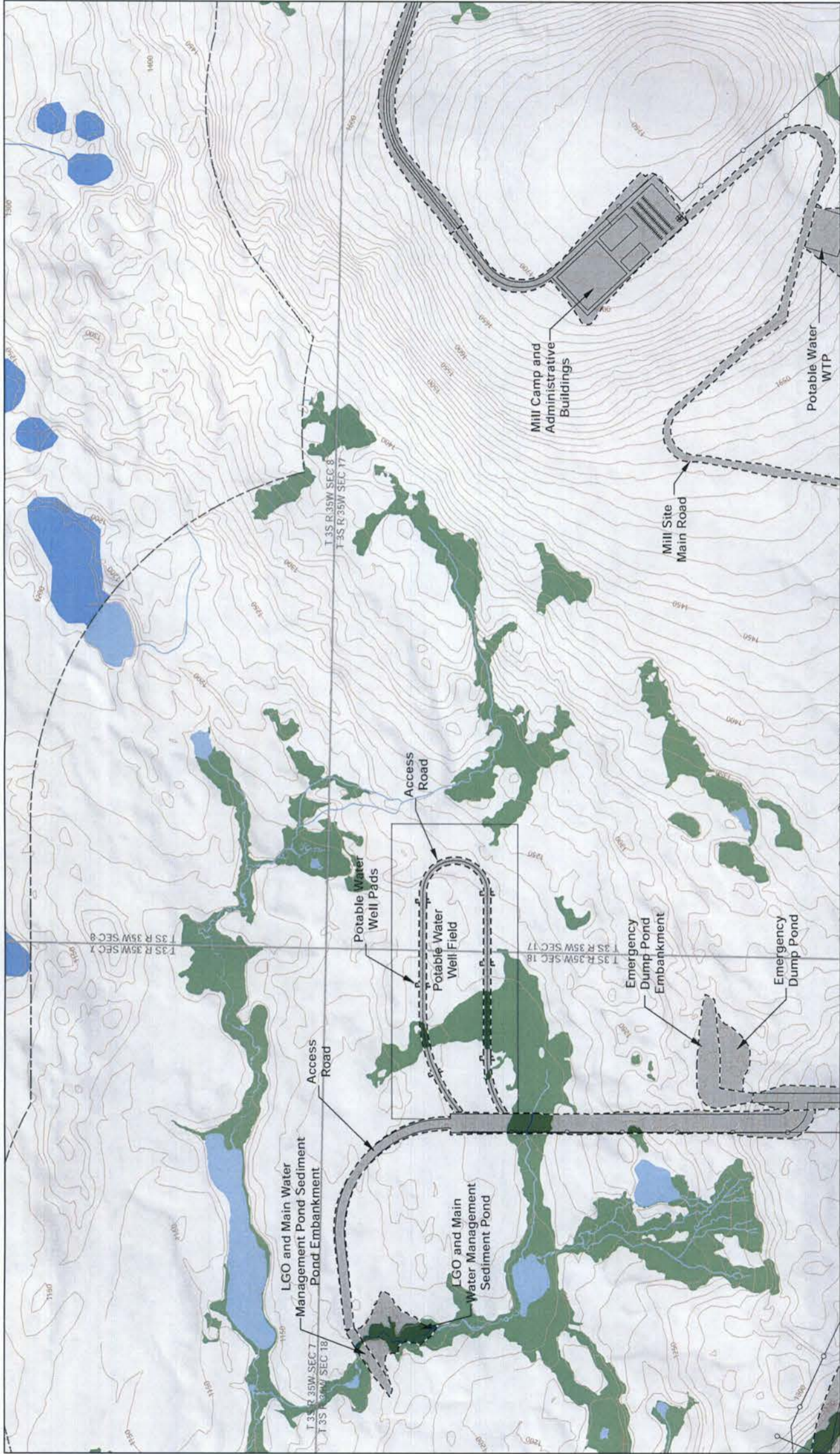
	OPEN PIT		HAUL ROAD		WATER QUALITY MONITORING POINT
	LOW GRADE ORE LAGO		SERVICE ROAD (WITH PAVING)		PORTLINE NOTE IN
	BLACK TAILINGS		ACCESS ROAD		AUSENCO FEATURE
	OVERBURDEN STOCKPILE		WATER TREATMENT PLANT		WTP POTABLE WATER PIPELINE
	GROWTH MEDIUM STOCKPILE		OPEN PIT PUMPING WELLS		STORAGE PIPELINE
	EMBANKMENT FILL		WTP DISCHARGE POINT		NATURAL GAS PIPELINE (10 inch DIAMETER)
	POND		WTP DISCHARGE PIPELINE		
	MINERAL CLOSING ORDER				
	DRAINAGE DITCH				
	RECLAIM PIPELINE				
	RECLAIM WATER PUMPING RANGE				
	BLACK TAILINGS PIPELINE				
	BLACK TAILINGS DISCHARGE				
	PYRITIC TAILINGS PIPELINE				
	PYRITIC TAILINGS DISCHARGE				



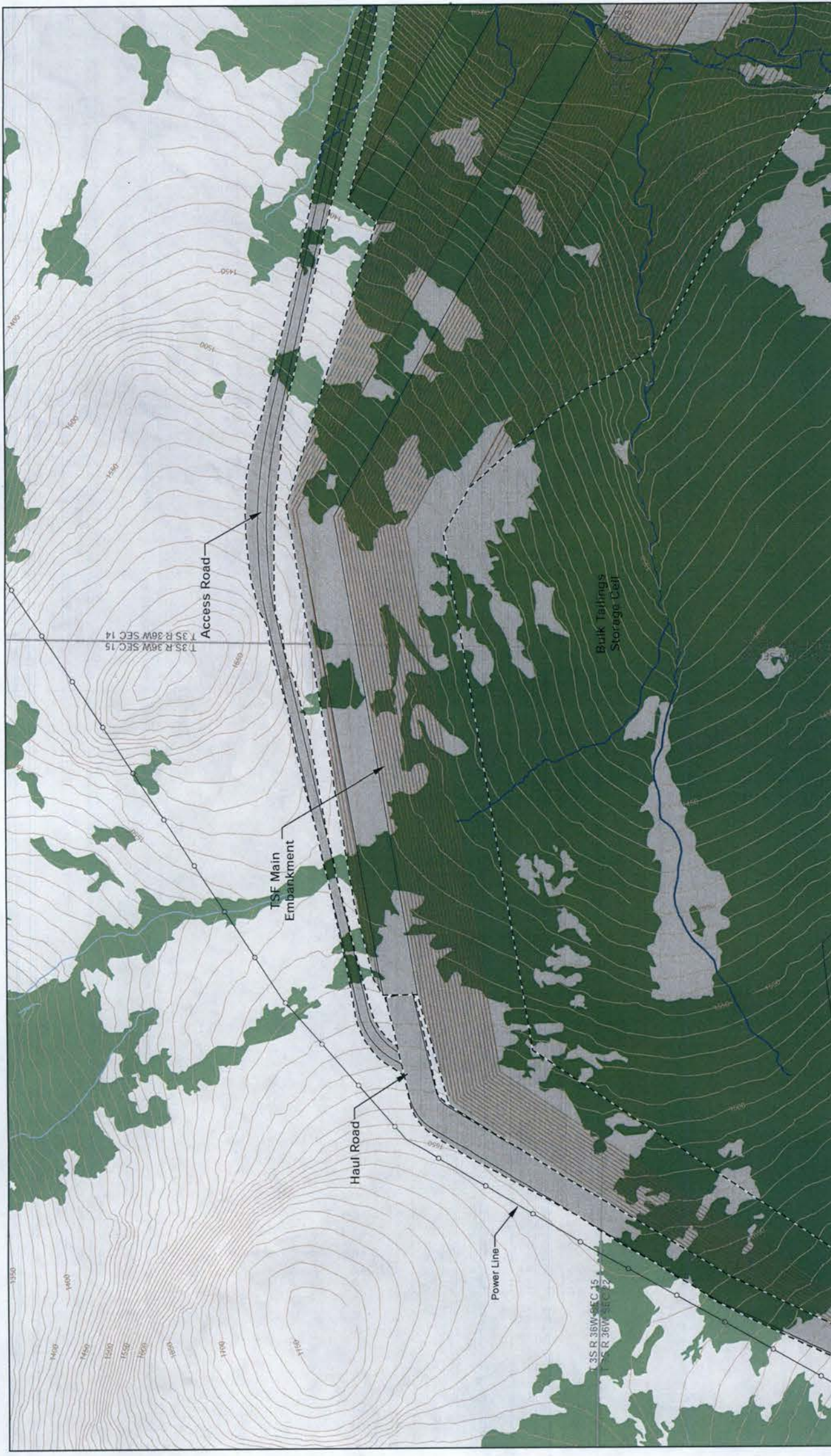
<p>PROJECT DISTURBANCE LIMIT</p> <p>PROJECT DESIGN DETAIL FEATURE</p> <p>WELAND MAPPING LIMIT</p> <p>MAPPED WELANDS</p>		<p>MAPPED WATERS</p> <p>Discharge Area in Wetlands</p> <p>Discharge Area in Waters</p> <p>Mapped Stream Centerlines</p> <p>Discharge in Streams</p>		<p>USGS WATERBODY</p> <p>USGS Stream</p> <p>Section Boundary</p> <p>Township Boundary</p> <p>50' Contour (Existing)</p>		<p>PROJECT DESIGN</p> <p>Grading Contours</p> <p>Other Figure Extent</p>		<p>PID TILE CROSS REFERENCE</p> <p>No PJD Tile Reference</p> <p>NOTES</p>		<p>SCALE</p> <p>0 1,400 2,800 4,200 Feet</p> <p>1 inch = 2,800 feet</p> <p>NAD 1983 StatePlane Alaska 5 FIPS 5006 Feet</p>		<p>PEBBLE PROJECT</p> <p>APPLICANT: PEBBLE LIMITED PARTNERSHIP</p> <p>PROPOSED ACTIVITY: MINERAL DEVELOPMENT</p> <p>FILE NO.: POA-2017-271</p>		<p>PLAN VIEW</p> <p>MINE AREA</p> <p>OVERVIEW</p>		<p>DRAWING TITLE:</p> <p>DATE: DECEMBER 2017</p> <p>FIGURE NO.: M-002</p>	
---	--	--	--	--	--	---	--	--	--	---	--	---	--	--	--	--	--



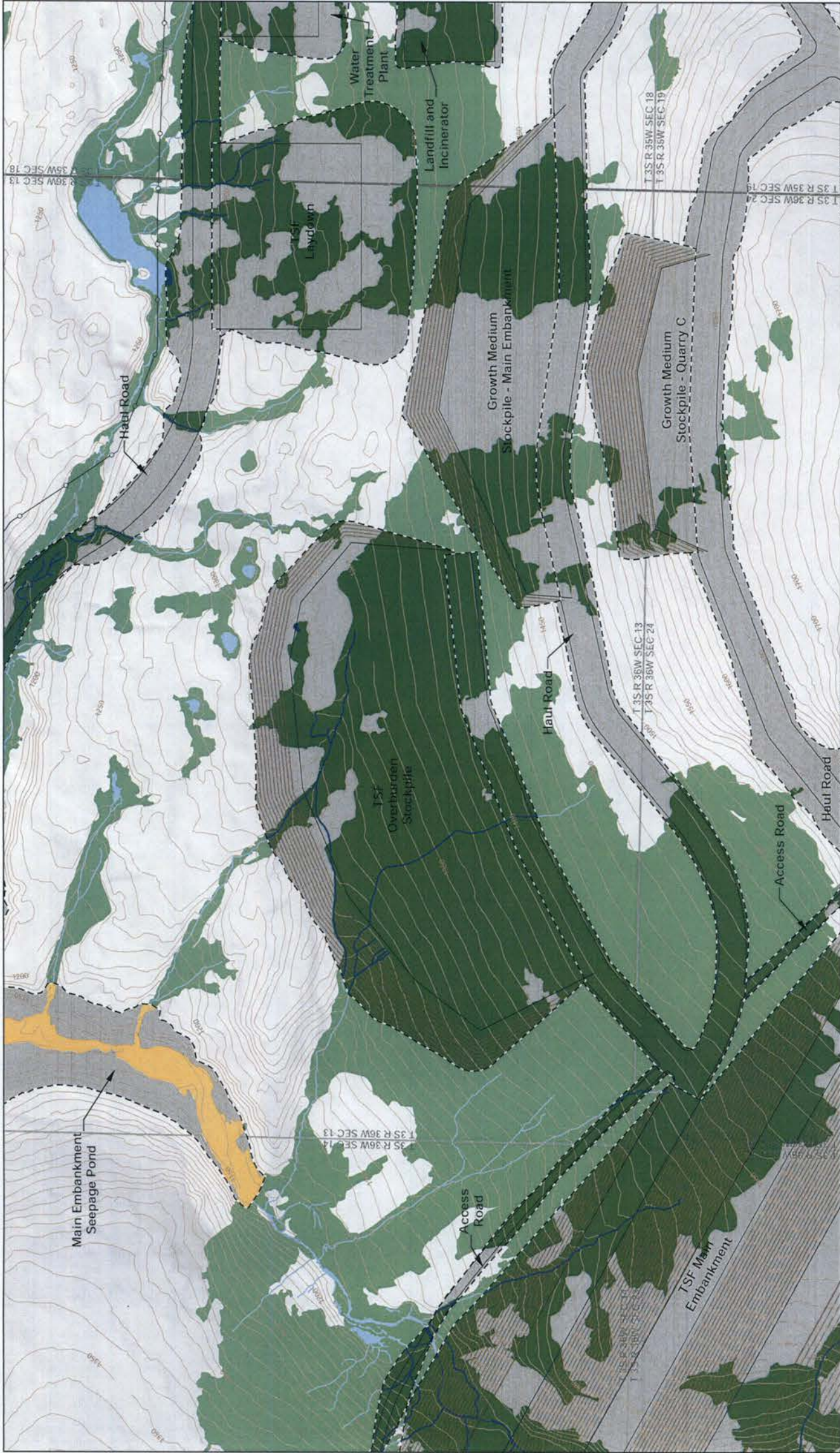
PROJECT DISTURBANCE LIMIT PROJECT DESIGN DETAIL FEATURE POWER LINE WETLAND MAPPING LIMIT MAPPED WETLANDS		MAPPED WATERS DISCHARGE AREA IN WETLANDS DISCHARGE AREA IN WATERS INUNDATED WETLANDS AND WATERS MAPPED STREAM CENTERLINES		10' CONTOURS (EXISTING) PROJECT DESIGN GRADING CONTOURS DISCHARGE IN STREAMS USGS WATERBODY USGS STREAM SECTION BOUNDARY TOWNSHIP BOUNDARY		FID TILE CROSS REFERENCE A6,B6,B7,C7		NOTES		NAD 1983 StatePlane Alaska 5 FIPS 5005 Feet 1 inch = 500 feet		APPLICANT: PEBBLE LIMITED PARTNERSHIP PROPOSED ACTIVITY: MINERAL DEVELOPMENT FILE NO. POA-2017-271		DRAWING TITLE: PLAN VIEW MINE AREA	
0 250 500 750 Feet		L.A.T. LONG. OF MINE 59°33'31.29" N 150°18'2.83" W		WATERWAY: KOKTULI RIVER		DATE: DECEMBER 2017		FIGURE NO. M-003		T 35 R 36W SEC 11 T 35 R 36W SEC 12 T 35 R 36W SEC 13 T 35 R 36W SEC 14		Haul Road Service Road Access Road Power Line Reclaim Water Pumping Barge Water Treatment Plant Discharge Fields - North TSF Main Embankment Seepage Collection Pond - Sediment Pond Embankment TSF Main Embankment Seepage Collection Pond TSF Main Embankment Seepage Collection Pond Embankment TSF Main Embankment Seepage Collection Pond TSF Main Embankment Seepage Collection Pond Embankment North Fork Koktuli River North Fork Koktuli River North Fork Koktuli River			



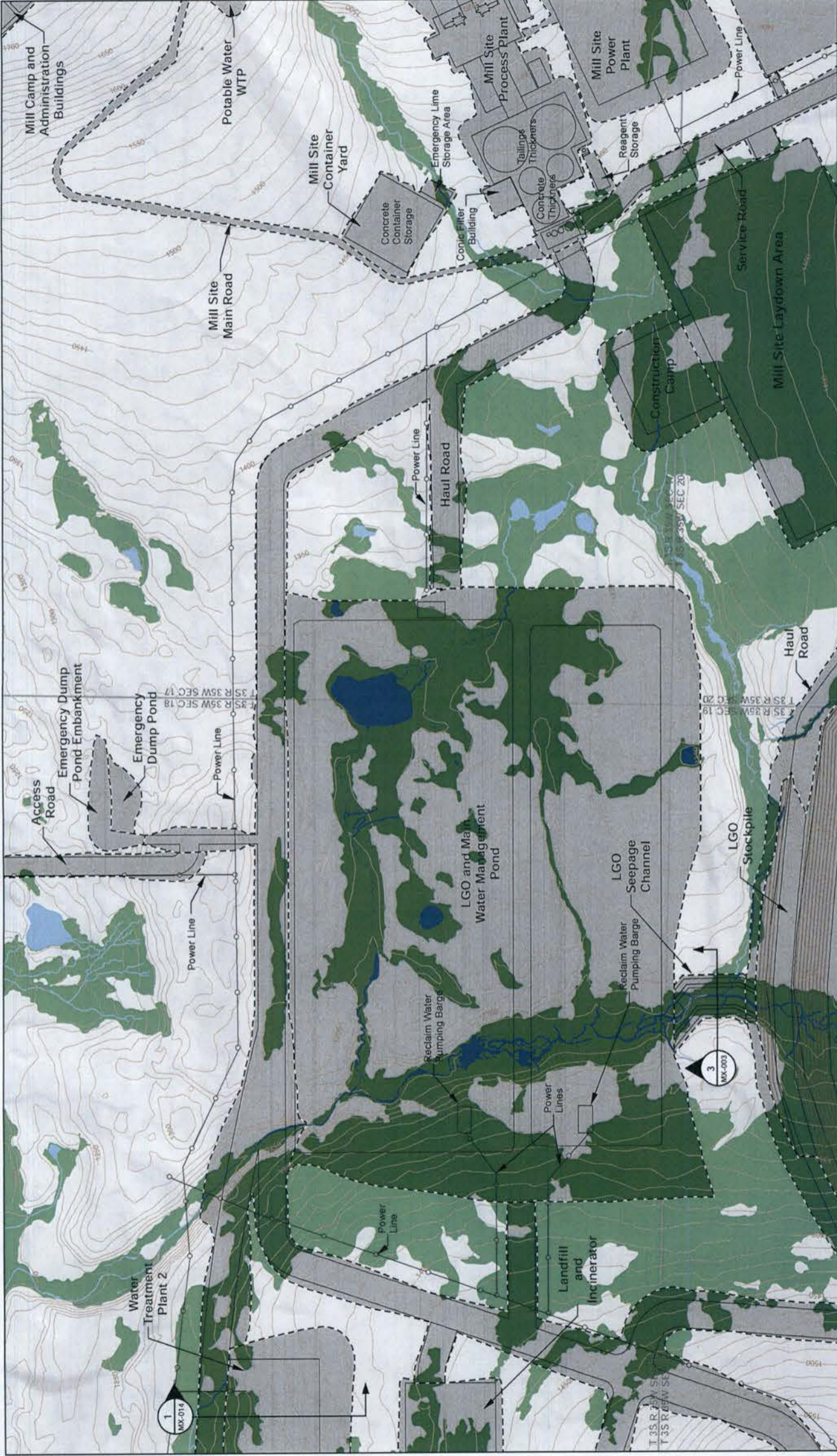
<p>PROJECT DISTURBANCE LIMIT</p> <p>PROJECT DESIGN DETAIL FEATURE</p> <p>POWER LINE</p> <p>WETLAND MAPPING LIMIT</p> <p>MAPPED WETLANDS</p>		<p>MAPPED WATERS</p> <p>DISCHARGE AREA IN WETLANDS</p> <p>DISCHARGE AREA IN WATERS</p> <p>MAPPED STREAM CENTERLINES</p>		<p>DISCHARGE IN STREAMS</p> <p>USGS WATERBODY</p> <p>USGS STREAM</p> <p>SECTION BOUNDARY</p> <p>TOWNSHIP BOUNDARY</p>		<p>10' CONTOURS (EXISTING)</p> <p>PROJECT DESIGN</p> <p>GRADING CONTOURS</p>		<p>NOTES</p>		<p>PROJ FILE CROSS REFERENCE</p> <p>B9,C9,C10</p>		<p>SCALE</p> <p>0 250 500 750 Feet</p> <p>1 inch = 500 feet</p> <p>NAD 1983 StatePlane Alaska 5 FIPS 5005 Feet</p>		<p>APPLICANT: PEBBLE LIMITED PARTNERSHIP</p> <p>PROPOSED ACTIVITY: MINERAL DEVELOPMENT</p> <p>FILE NO.: POA-2017-271</p>		<p>DATE: DECEMBER 2017</p> <p>FIGURE NO.: M-004</p>	
<p>DRAWING TITLE: PLAN VIEW MINE AREA</p>																	



DRAWING TITLE: PLAN VIEW MINE AREA	
PEBBLE PROJECT APPLICANT: PEBBLE LIMITED PARTNERSHIP	PROPOSED ACTIVITY: MINERAL DEVELOPMENT FILE NO: POA-2017-271
LAT. LONG. OF MINE 59°53'51.29" N 158°18'2.83" W WATERWAY: KOKTULI RIVER	DATE: DECEMBER 2017 FIGURE NO: M-005
PDD TILE CROSS REFERENCE C4,D4,D5,D6, E5,E6	NOTES:
0 250 500 750 Feet 1 inch = 500 feet NAD 1983 StatePlane Alaska 5 FIPS 5005 Feet	10' Contours (Existing) Project Design Grading Contours Discharge in Streams USGS Waterbody USGS Stream Section Boundary Township Boundary Mapped Waters Discharge Area in Wetlands Discharge Area in Waters Mapped Stream Centerlines Project Disturbance Limit Project Design Detail Feature Power Line Wetland Mapping Limit Mapped Wetlands



		PAD FILE CROSS REFERENCE C6,C7,C8,C9, D6,D7,D8,D9, E6,E7	SCALE 0 250 500 750 Feet 1 inch = 500 feet NAD 1983 StatePlane Alaska 5 FIPS 5005 Feet	APPLICANT: PEBBLE LIMITED PARTNERSHIP PROPOSED ACTIVITY: MINERAL DEVELOPMENT FILE NO.: POA-2017-271	DRAWING TITLE: PLAN VIEW MINE AREA
NOTES See MX-006 for Growth Stockpile Cross Sections		DATE: DECEMBER 2017 FIGURE NO.: M-006			



PROJECT DISTURBANCE LIMIT PROJECT DESIGN DETAIL FEATURE POWER LINE WETLAND MAPPING LIMIT MAPPED WETLANDS	MAPPED WATERS DISCHARGE AREA IN WETLANDS DISCHARGE AREA IN WATERS MAPPED STREAM CENTERLINES	DISCHARGE IN STREAMS USGS WATERBODY USGS STREAM	10' CONTOURS (EXISTING) PROJECT DESIGN GRADING CONTOURS	SECTION BOUNDARY TOWNSHIP BOUNDARY	PEBBLE PROJECT APPLICANT: PEBBLE LIMITED PARTNERSHIP PROPOSED ACTIVITY: MINERAL DEVELOPMENT FILE NO: POA-2017-271	DRAWING TITLE: PLAN VIEW MINE AREA



PROJECT DISTURBANCE LIMIT PROJECT DESIGN DETAIL FEATURE POWER LINE WETLAND MAPPING LIMIT MAPPED WETLANDS		10' CONTOURS (EXISTING) DISCHARGE IN STREAMS MAPPED WATERS DISCHARGE AREA IN WETLANDS DISCHARGE AREA IN WATERS MAPPED STREAM CENTERLINES		USGS WATERBODY USGS STREAM SECTION BOUNDARY TOWNSHIP BOUNDARY		PAID FILE CROSS REFERENCE C13.D11.D12.D13. E11.E12.E14		NOTES See MX-006 for Growth Stockpile Cross Section		SCALE 0 250 500 750 Feet 1 inch = 500 feet NAD 1983 StatePlane Alaska 5 FIPS 5005 Feet		PEBBLE PROJECT APPLICANT: PEBBLE LIMITED PARTNERSHIP PROPOSED ACTIVITY: MINERAL DEVELOPMENT FILE NO.: POA-2017-271		DRAWING TITLE: PLAN VIEW MINE AREA	
										DATE: DECEMBER 2017		FIGURE NO.: M-008			



DRAWING TITLE: PLAN VIEW MINE AREA	
PEBBLE PROJECT APPLICANT: PEBBLE LIMITED PARTNERSHIP	
PROJECT DISTURBANCE LIMIT PROJECT DESIGN DETAIL FEATURE POWER LINE WETLAND MAPPING LIMIT MAPPED WETLANDS	10' Contours (Existing) Discharge in Streams Mapped Waters Discharge Area in Wetlands Discharge Area in Waters Mapped Stream Centerlines
USGS Waterbody USGS Stream Section Boundary Township Boundary	PROJECT DESIGN GRADING CONTOURS NOTES: See MX-006 for Growth Stockpile Cross Section
PJD FILE CROSS REFERENCE E2, E3, F1, F2, F3	LAT. LONG. OF MINE 59°53'51.29" N 155°18'23.83" W WATERWAY: KOKTULI RIVER
0 250 500 750 Feet 1 inch = 500 feet NAD 1983 StatePlane Alaska 5 FIPS 5005 Feet	PROPOSED ACTIVITY: MINERAL DEVELOPMENT FILE NO. POA-2017-271
DATE: DECEMBER 2017	FIGURE NO. M-009



<p>PROJECT DISTURBANCE LIMIT</p> <p>PROJECT DESIGN DETAIL FEATURE</p> <p>POWER LINE</p> <p>WETLAND MAPPING LIMIT</p> <p>MAPPED WETLANDS</p>		<p>MAPPED WATERS</p> <p>DISCHARGE AREA IN WETLANDS</p> <p>DISCHARGE AREA IN WATERS</p> <p>MAPPED STREAM CENTERLINES</p>		<p>10' CONTOURS (EXISTING)</p> <p>PROJECT DESIGN GRADING CONTOURS</p>		<p>DISCHARGE IN STREAMS</p> <p>USGS WATERBODY</p> <p>USGS STREAM</p> <p>SECTION BOUNDARY</p> <p>TOWNSHIP BOUNDARY</p>		<p>PEBBLE PROJECT</p> <p>APPLICANT: PEBBLE LIMITED PARTNERSHIP</p> <p>PROPOSED ACTIVITY: MINERAL DEVELOPMENT</p> <p>FILE NO. POA-2017-271</p>		<p>PLAN VIEW MINE AREA</p>	
<p>NOTES</p> <p>See MX-007 for Quarry Cross Section</p>		<p>GRID FILE CROSS REFERENCE</p> <p>D4, E3, E4, E5, E6, F3, F4, F5, F6, G5, G6</p>		<p>SCALE</p> <p>0 250 500 750 Feet</p> <p>1 inch = 500 feet</p> <p>NAD 1983 StatePlane Alaska 5 FIPS 5005 Feet</p>		<p>DATE: DECEMBER 2017</p>		<p>FIGURE NO. M-010</p>			



PROJECT DISTURBANCE LIMIT 		PROJECT DESIGN DETAIL FEATURE 		POWER LINE 		WETLAND MAPPING LIMIT 		MAPPED WETLANDS 	
MAPPED WATERS 		DISCHARGE AREA IN WETLANDS 		DISCHARGE AREA IN WATERS 		MAPPED STREAM CENTERLINES 		10' CONTOURS (EXISTING) 	
DISCHARGE IN STREAMS 		USGS WATERBODY 		USGS STREAM 		SECTION BOUNDARY 		TOWNSHIP BOUNDARY 	
PROJECT DESIGN GRADING CONTOURS 		PROJECT DISTURBANCE LIMIT 		PROJECT DESIGN DETAIL FEATURE 		POWER LINE 		WETLAND MAPPING LIMIT 	
WETLAND MAPPING LIMIT 		WETLAND MAPPING LIMIT 		WETLAND MAPPING LIMIT 		WETLAND MAPPING LIMIT 		WETLAND MAPPING LIMIT 	

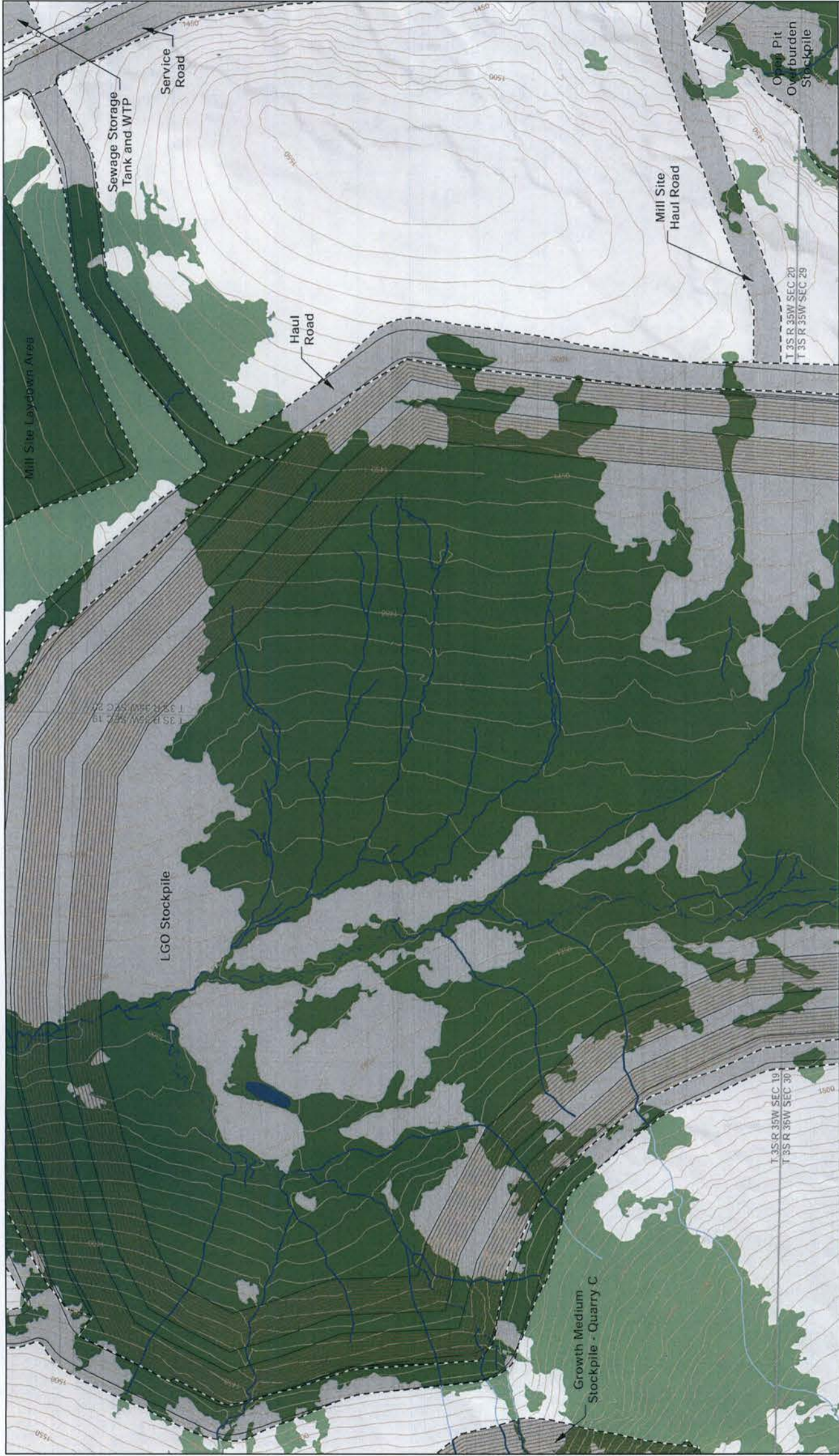
PJD TITLE CROSS REFERENCE
 E6, E7, E8, F6, F7, F8, F9, G6, G7, G8

NOTES
 See MX-006 for Growth Stockpile Cross Section and MX-007 for Quarry Cross Section

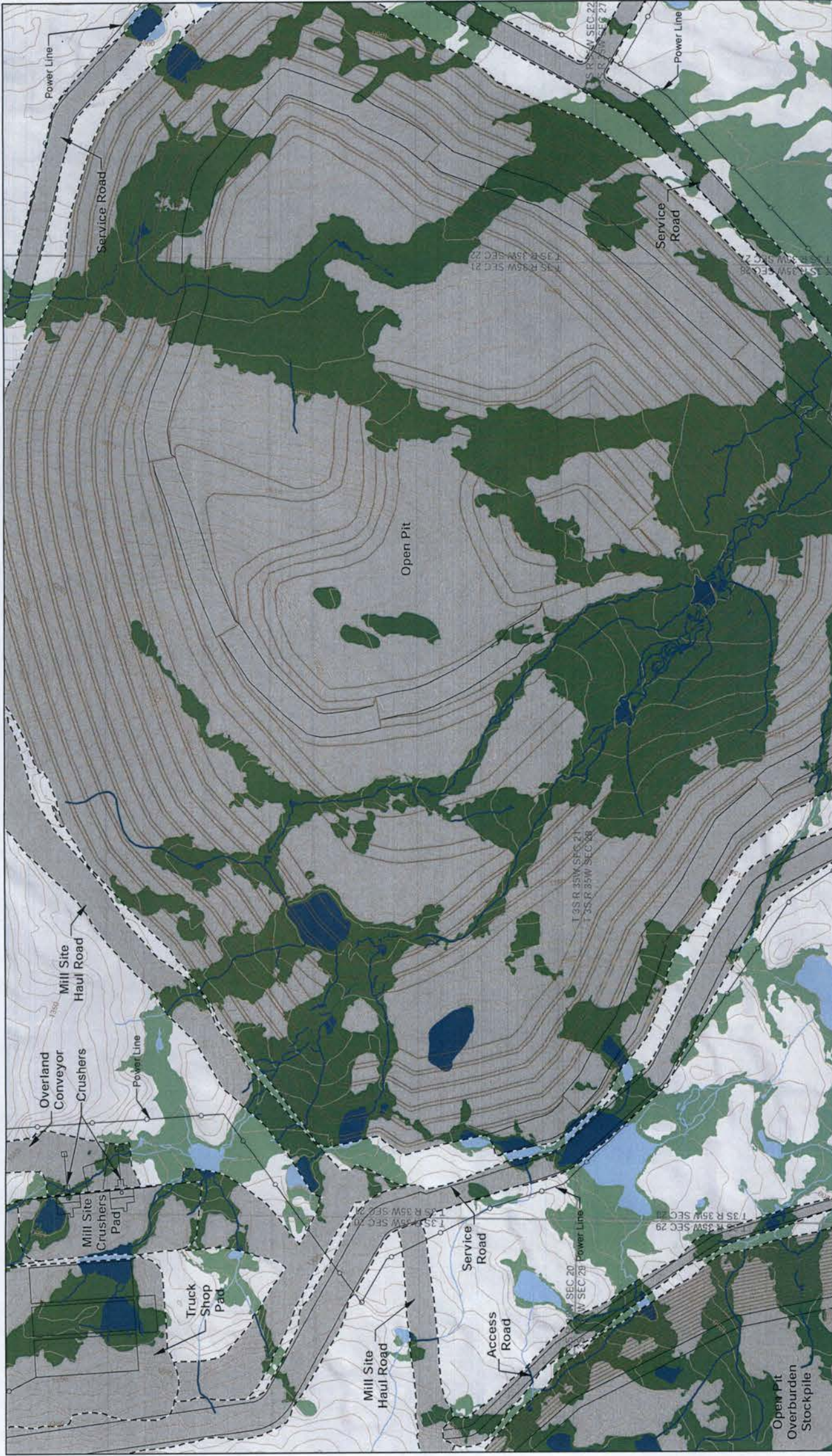
SCALE: 1 inch = 500 feet
 NAD 1983 StatePlane Alaska 5 FIPS 5005 Feet

LAT. LONG. OF MINE: 59°53'51.29" N 155°19'23.83" W
 WATERWAY: KOKTULI RIVER
 PROPOSED ACTIVITY: MINERAL DEVELOPMENT
 FILE NO.: POA-2017-271

DRAWING TITLE: PLAN VIEW MINE AREA
 DATE: DECEMBER 2017
 FIGURE NO.: M-011



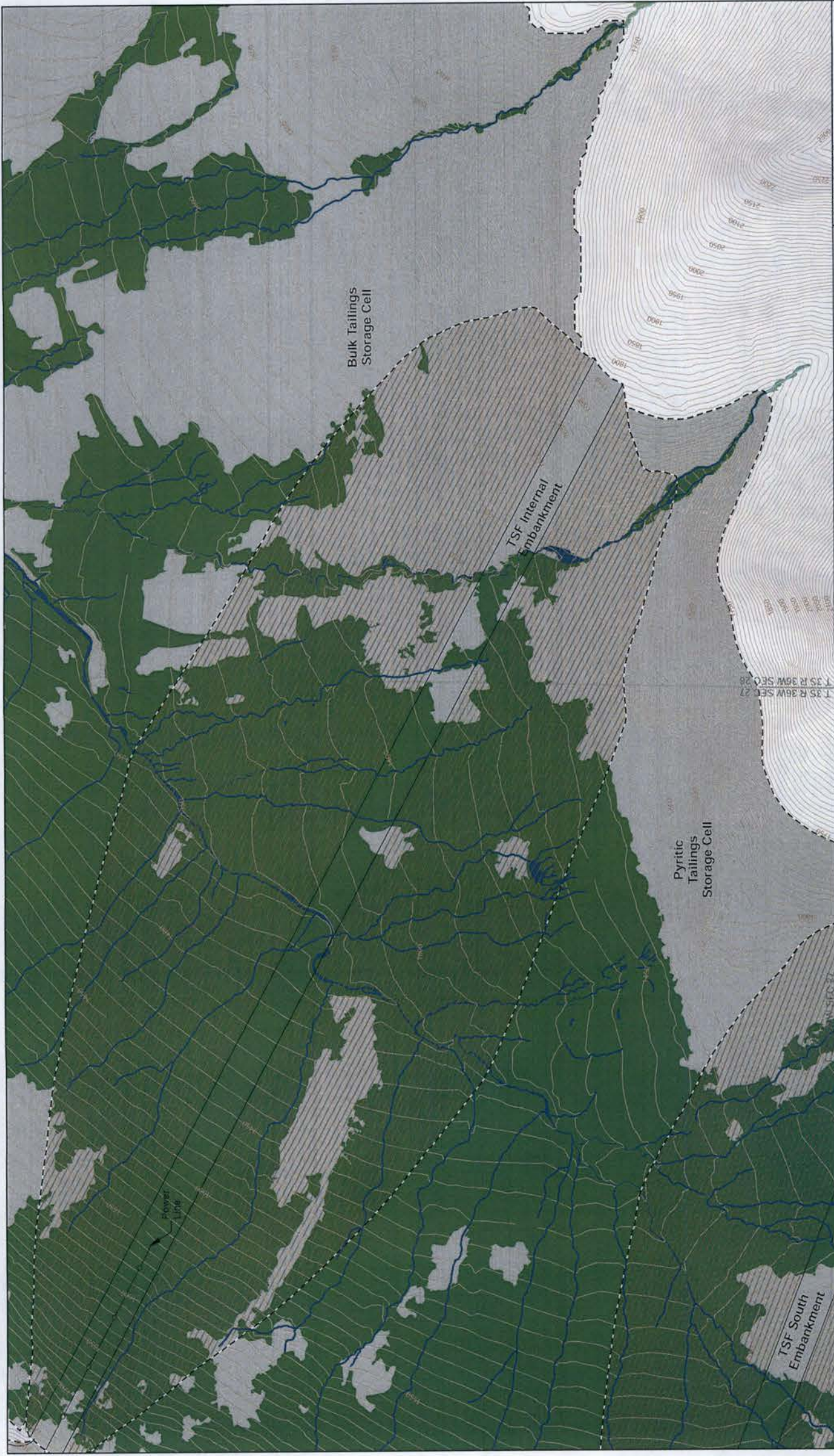
<p>PEBBLE PROJECT</p> <p>APPLICANT: PEBBLE LIMITED PARTNERSHIP</p> <p>PROPOSED ACTIVITY: MINERAL DEVELOPMENT</p> <p>FILE NO. POA-2017-271</p>		<p>DRAWING TITLE:</p> <p>PLAN VIEW MINE AREA</p>	
<p>PLAN FILE CROSS REFERENCE</p> <p>E9,E10,E11,F9, F10,F11,G9,G10, G11</p> <p>NOTES</p>		<p>DATE: DECEMBER 2017</p> <p>FIGURE NO. M-012</p>	
<p>PROJECT DISTURBANCE LIMIT</p> <p>PROJECT DESIGN DETAIL FEATURE</p> <p>POWER LINE</p> <p>WETLAND MAPPING LIMIT</p> <p>MAPPED WETLANDS</p>		<p>10' CONTOURS (EXISTING)</p> <p>PROJECT DESIGN GRADING CONTOURS</p> <p>DISCHARGE IN STREAMS</p> <p>USGS WATERBODY</p> <p>USGS STREAM</p> <p>SECTION BOUNDARY</p> <p>TOWNSHIP BOUNDARY</p>	
<p>MAPPED WATERS</p> <p>DISCHARGE AREA IN WETLANDS</p> <p>DISCHARGE AREA IN WATERS</p> <p>MAPPED STREAM CENTERLINES</p>		<p>SCALE</p> <p>0 250 500 750 Feet</p> <p>1 inch = 500 feet</p> <p>NAD 1983 StatePlane Alaska 5 FIPS 5005 Feet</p>	



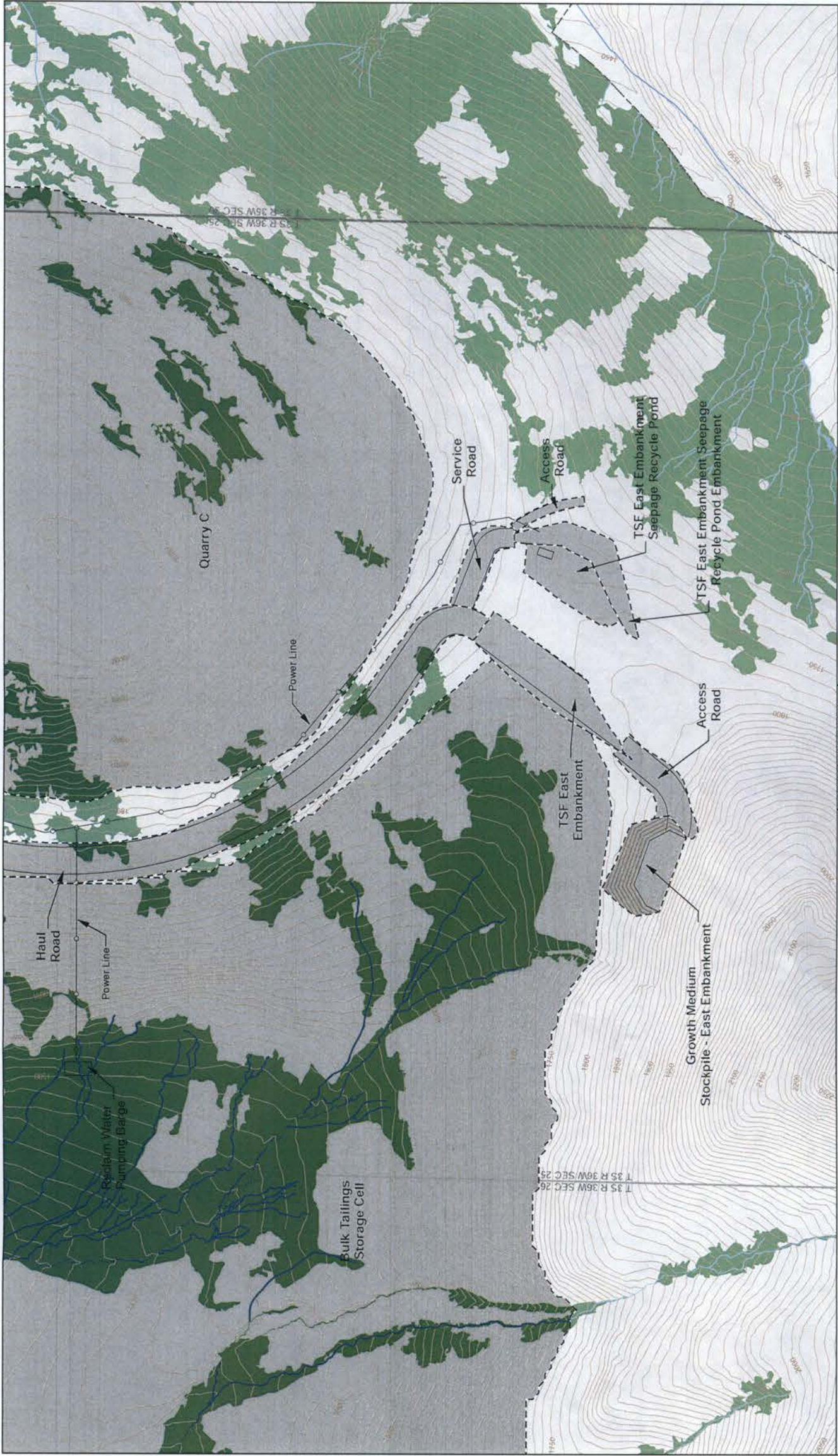
<p>PROJECT DISTURBANCE LIMIT</p> <p>PROJECT DESIGN DETAIL FEATURE</p> <p>POWER LINE</p> <p>WETLAND MAPPING LIMIT</p> <p>MAPPED WETLANDS</p>	<p>MAPPED WATERS</p> <p>DISCHARGE AREA IN WETLANDS</p> <p>DISCHARGE AREA IN WATERS</p> <p>MAPPED STREAM CENTERLINES</p>	<p>10' CONTOURS (EXISTING)</p> <p>PROJECT DESIGN GRADING CONTOURS</p>	<p>DISCHARGE IN STREAMS</p> <p>USGS WATERBODY</p> <p>USGS STREAM</p> <p>SECTION BOUNDARY</p> <p>TOWNSHIP BOUNDARY</p>	<p>30' TILE CROSS REFERENCE</p> <p>E11, E12, E13, F11, F12, F13, F14, G11, G12, G13, G14</p>	<p>PEBBLE PROJECT</p> <p>APPLICANT: PEBBLE LIMITED PARTNERSHIP</p>	<p>DRAWING TITLE:</p> <p>PLAN VIEW</p> <p>MINE AREA</p>
<p>1 inch = 500 feet</p> <p>0 250 500 750 Feet</p>		<p>PROPOSED ACTIVITY: MINERAL DEVELOPMENT</p> <p>FILE NO. POA-2017-271</p>		<p>LAT., LONG. OF MINE: 59°53'51.20" N 155°18'23.83" W</p> <p>WATERWAY: KOKTUULU RIVER</p>		



PROJECT DISTURBANCE LIMIT PROJECT DESIGN DETAIL FEATURE POWER LINE WETLAND MAPPING LIMIT MAPPED WETLANDS		10' CONTOURS (EXISTING) PROJECT DESIGN GRADING CONTOURS		DISCHARGE IN STREAMS USGS WATERBODY USGS STREAM SECTION BOUNDARY TOWNSHIP BOUNDARY		MAPPED WATERS DISCHARGE AREA IN WETLANDS DISCHARGE AREA IN WATERS MAPPED STREAM CENTERLINES		PIEDMONT CROSS REFERENCE F2, G2, G3, H2, H3 NOTES See MX-006 for Growth Stockpile Cross Sections		SCALE 0 250 500 750 Feet 1 inch = 500 feet NAD 1983 StatePlane Alaska 5 FIPS 5005 Feet		APPLICANT: PEBBLE LIMITED PARTNERSHIP PROJECT ACTION: MINERAL DEVELOPMENT FILE NO.: POA-2017-271		DRAWING TITLE: PLAN VIEW MINE AREA	
LAT. LONG. OF MINE: 69°39'29" N 158°19'23" W WATERWAY: KOKTUULI RIVER		DATE: DECEMBER 2017		FIGURE NO.: M-014											



<p>PROJECT DISTURBANCE LIMIT</p> <p>PROJECT DESIGN DETAIL FEATURE</p> <p>POWER LINE</p> <p>WETLAND MAPPING LIMIT</p> <p>WETLANDS</p> <p>MAPPED WATERS</p> <p>DISCHARGE AREA IN WETLANDS</p> <p>DISCHARGE AREA IN WATERS</p> <p>MAPPED STREAM CENTERLINES</p>		<p>DISCHARGE IN STREAMS</p> <p>USGS WATERBODY</p> <p>USGS STREAM</p> <p>SECTION BOUNDARY</p> <p>TOWNSHIP BOUNDARY</p>		<p>10' CONTOURS (EXISTING)</p> <p>PROJECT DESIGN</p> <p>GRADING CONTOURS</p>		<p>PROJECT TITLE:</p> <p>PLAN VIEW</p> <p>MINE AREA</p>	
<p>PROJECT DISTURBANCE LIMIT</p> <p>PROJECT DESIGN DETAIL FEATURE</p> <p>POWER LINE</p> <p>WETLAND MAPPING LIMIT</p> <p>WETLANDS</p> <p>MAPPED WATERS</p> <p>DISCHARGE AREA IN WETLANDS</p> <p>DISCHARGE AREA IN WATERS</p> <p>MAPPED STREAM CENTERLINES</p>		<p>DISCHARGE IN STREAMS</p> <p>USGS WATERBODY</p> <p>USGS STREAM</p> <p>SECTION BOUNDARY</p> <p>TOWNSHIP BOUNDARY</p>		<p>10' CONTOURS (EXISTING)</p> <p>PROJECT DESIGN</p> <p>GRADING CONTOURS</p>			<p>PEBBLE PROJECT</p> <p>APPLICANT: PEBBLE LIMITED PARTNERSHIP</p> <p>PROPOSED ACTIVITY: MINERAL DEVELOPMENT</p> <p>FILE NO: POA-2017-271</p>
<p>PROJECT DISTURBANCE LIMIT</p> <p>PROJECT DESIGN DETAIL FEATURE</p> <p>POWER LINE</p> <p>WETLAND MAPPING LIMIT</p> <p>WETLANDS</p> <p>MAPPED WATERS</p> <p>DISCHARGE AREA IN WETLANDS</p> <p>DISCHARGE AREA IN WATERS</p> <p>MAPPED STREAM CENTERLINES</p>		<p>DISCHARGE IN STREAMS</p> <p>USGS WATERBODY</p> <p>USGS STREAM</p> <p>SECTION BOUNDARY</p> <p>TOWNSHIP BOUNDARY</p>		<p>10' CONTOURS (EXISTING)</p> <p>PROJECT DESIGN</p> <p>GRADING CONTOURS</p>			<p>DATE: DECEMBER 2017</p> <p>FIGURE NO. M-015</p>
<p>PROJECT DISTURBANCE LIMIT</p> <p>PROJECT DESIGN DETAIL FEATURE</p> <p>POWER LINE</p> <p>WETLAND MAPPING LIMIT</p> <p>WETLANDS</p> <p>MAPPED WATERS</p> <p>DISCHARGE AREA IN WETLANDS</p> <p>DISCHARGE AREA IN WATERS</p> <p>MAPPED STREAM CENTERLINES</p>		<p>DISCHARGE IN STREAMS</p> <p>USGS WATERBODY</p> <p>USGS STREAM</p> <p>SECTION BOUNDARY</p> <p>TOWNSHIP BOUNDARY</p>		<p>10' CONTOURS (EXISTING)</p> <p>PROJECT DESIGN</p> <p>GRADING CONTOURS</p>		<p>SCALE</p> <p>0 250 500 750 Feet</p> <p>1 inch = 500 feet</p> <p>NAD 1983 StatePlane-Alaska 5 FIPS 5005 Feet</p>	
<p>PROJECT DISTURBANCE LIMIT</p> <p>PROJECT DESIGN DETAIL FEATURE</p> <p>POWER LINE</p> <p>WETLAND MAPPING LIMIT</p> <p>WETLANDS</p> <p>MAPPED WATERS</p> <p>DISCHARGE AREA IN WETLANDS</p> <p>DISCHARGE AREA IN WATERS</p> <p>MAPPED STREAM CENTERLINES</p>		<p>DISCHARGE IN STREAMS</p> <p>USGS WATERBODY</p> <p>USGS STREAM</p> <p>SECTION BOUNDARY</p> <p>TOWNSHIP BOUNDARY</p>		<p>10' CONTOURS (EXISTING)</p> <p>PROJECT DESIGN</p> <p>GRADING CONTOURS</p>		<p>SECTION CROSS REFERENCE</p> <p>F4, G3, G4, G5, G6, H3, H4, H5, H6, I5</p> <p>NOTES</p> <p>T. 35 R. 36 W. SEC. 27</p> <p>T. 35 R. 36 W. SEC. 28</p>	



	PROJECT DISTURBANCE LIMIT Project Design Detail Feature Power Line Wetland Mapping Limit Mapped Wetlands	MAPPED WATERS Discharge Area in Wetlands Discharge Area in Waters Mapped Stream Centerlines	DISCHARGE IN STREAMS (EXISTING) USGS Waterbody USGS Stream Section Boundary Township Boundary	10' CONTOURS (EXISTING) Project Design Grading Contours	PLOT FILE CROSS REFERENCE G6 G7, G8, H6, H7 NOTES See MX-006 for Growth Stockpile Cross Section	SCALE 0 250 500 750 Feet 1 inch = 500 feet NAD 1983 StatePlane Alaska 5 FIPS 5005 Feet	PEBBLE PROJECT APPLICANT: PEBBLE LIMITED PARTNERSHIP PROPOSED ACTIVITY: MINERAL DEVELOPMENT FILE NO.: POA-2017-271	DRAWING TITLE: PLAN VIEW MINE AREA	DATE: DECEMBER 2017	FIGURE NO.: M-016
--	---	---	--	---	--	--	--	---	-------------------------------	-----------------------------



<p>PROJECT DISTURBANCE LIMIT</p> <p>PROJECT DESIGN DETAIL FEATURE</p> <p>WETLAND MAPPING LIMIT</p> <p>MAPPED WETLANDS</p>	<p>MAPPED WATERS</p> <p>DISCHARGE AREA IN WETLANDS</p> <p>WETLAND CENTERLINES</p>	<p>DISCHARGE IN STREAMS</p> <p>USGS WATERBODY</p> <p>USGS STREAM</p>	<p>10' CONTOURS (EXISTING)</p> <p>PROJECT DESIGN GRADING CONTOURS</p>	<p>PEBBLE PROJECT</p> <p>APPLICANT: PEBBLE LIMITED PARTNERSHIP</p>		<p>DRAWING TITLE:</p> <p>PLAN VIEW MINE AREA</p>	
				<p>NOTES</p> <p>PROJECT DISTURBANCE LIMIT: G9, G10, G11, H10, H11</p> <p>PROJECT DESIGN DETAIL FEATURE: T3S, R35W, SFC, 30</p> <p>WETLAND MAPPING LIMIT: T3S, R35W, SFC, 30</p>		<p>PROPOSED ACTIVITY: MINERAL DEVELOPMENT</p> <p>FILE NO. POA-2017-271</p>	
<p>LEGEND</p> <p>Project Disturbance Limit</p> <p>Project Design Detail Feature</p> <p>Wetland Mapping Limit</p> <p>Mapped Wetlands</p> <p>Mapped Waters</p> <p>Discharge Area in Wetlands</p> <p>Wetland Centerlines</p> <p>Discharge in Streams</p> <p>USGS Waterbody</p> <p>USGS Stream</p> <p>Section Boundary</p> <p>Township Boundary</p>				<p>SCALE</p> <p>1 inch = 500 feet</p> <p>NAD 1983 StatePlane Alaska 5 FIPS 5005 Feet</p>		<p>GRAPHIC SCALE</p> <p>0 250 500 750 Feet</p>	



<p>PROJECT DISTURBANCE LIMIT</p> <p>PROJECT DESIGN DETAIL FEATURE</p> <p>POWER LINE</p> <p>WETLAND MAPPING LIMIT</p> <p>MAPPED WETLANDS</p> <p>MAPPED WATERS</p> <p>DISCHARGE AREA IN WETLANDS</p> <p>DISCHARGE AREA IN WATERS</p> <p>MAPPED STREAM CENTERLINES</p> <p>10' CONTOURS (EXISTING)</p> <p>PROJECT DESIGN GRADING CONTOURS</p> <p>USGS WATERBODY</p> <p>USGS STREAM</p> <p>SECTION BOUNDARY</p> <p>TOWNSHIP BOUNDARY</p>	<p>PROJECT CROSS REFERENCE</p> <p>G11, G12, G13, H11, H12, H13, I13</p> <p>NOTES</p>	<p>SCALE</p> <p>0 250 500 750 Feet</p> <p>1 inch = 500 feet</p> <p>NAD 1983 StatePlane Alaska 5 FIPS 5005 Feet</p>	<p>PEBBLE PROJECT</p> <p>APPLICANT: PEBBLE LIMITED PARTNERSHIP</p> <p>FILE NO. POA-2017-271</p> <p>PROPOSED ACTIVITY: MINERAL DEVELOPMENT</p> <p>WATERWAY: KOOKNUH RIVER</p> <p>DRAWING TITLE: PLAN VIEW MINE AREA</p> <p>DATE: DECEMBER 2017</p> <p>FIGURE NO. M-018</p>
---	--	--	---



<p>PROJECT DISTURBANCE LIMIT</p> <p>PROJECT DESIGN DETAIL FEATURE</p> <p>POWER LINE</p> <p>WETLAND MAPPING LIMIT</p> <p>MAPPED WETLANDS</p>	<p>MAPPED WATERS</p> <p>DISCHARGE AREA IN WETLANDS</p> <p>DISCHARGE AREA IN WATERS</p> <p>INUNDATED WETLANDS AND WATERS</p> <p>MAPPED STREAM CENTERLINES</p>	<p>10' CONTOURS (EXISTING)</p> <p>PROJECT DESIGN GRADING CONTOURS</p>	<p>POD FILE CROSS REFERENCE</p> <p>H2, H3, H4, J3, J4, J3</p> <p>NOTES</p>	<p>0 250 500 750 Feet</p> <p>1 inch = 500 feet</p> <p>NAD 1983 StatePlane Alaska 5 FIPS 5005 Feet</p>	<p>PEBBLE PROJECT</p> <p>APPLICANT: PEBBLE LIMITED PARTNERSHIP</p> <p>LAT. LONG. OF MINE: 59°53'31.29" N 155°18'27.83" W</p> <p>WATERWAY: KOKTUJU RIVER</p> <p>FILE NO.: POA-2017-271</p>	<p>DRAWING TITLE:</p> <p>PLAN VIEW</p> <p>MINE AREA</p>
					<p>DATE: DECEMBER 2017</p> <p>FIGURE NO. M-019</p>	



PROJECT DISTURBANCE LIMIT PROJECT DESIGN DETAIL FEATURE WETLAND MAPPING LIMIT MAPPED WETLANDS		MAPPED WATERS DISCHARGE AREA IN WETLANDS DISCHARGE AREA IN WATERS MAPPED STREAM CENTERLINES		10' CONTOURS (EXISTING) PROJECT DESIGN GRADING CONTOURS		DISCHARGE IN STREAMS USGS WATERBODY USGS STREAM SECTION BOUNDARY TOWNSHIP BOUNDARY		PLOT TILE CROSS REFERENCE 113, J14, K13		NOTES NAD 1983 StatePlane Alaska 5 FIPS 5005 Feet		SCALE 0 250 500 750 Feet 1 inch = 500 feet		DRAWING TITLE: PLAN VIEW MINE AREA	
APPLICANT: PEBBLE LIMITED PARTNERSHIP PROPOSED ACTIVITY: MINERAL DEVELOPMENT FILE NO.: POA-2017-271				LAT. LONG. OF MINE 60°53'51.20" N 155°17'2.83" W COORDINATE SYSTEM: NAD 1983 ALASKA MOKTULU RIVER				DATE: DECEMBER 2017		FIGURE NO. M-020					