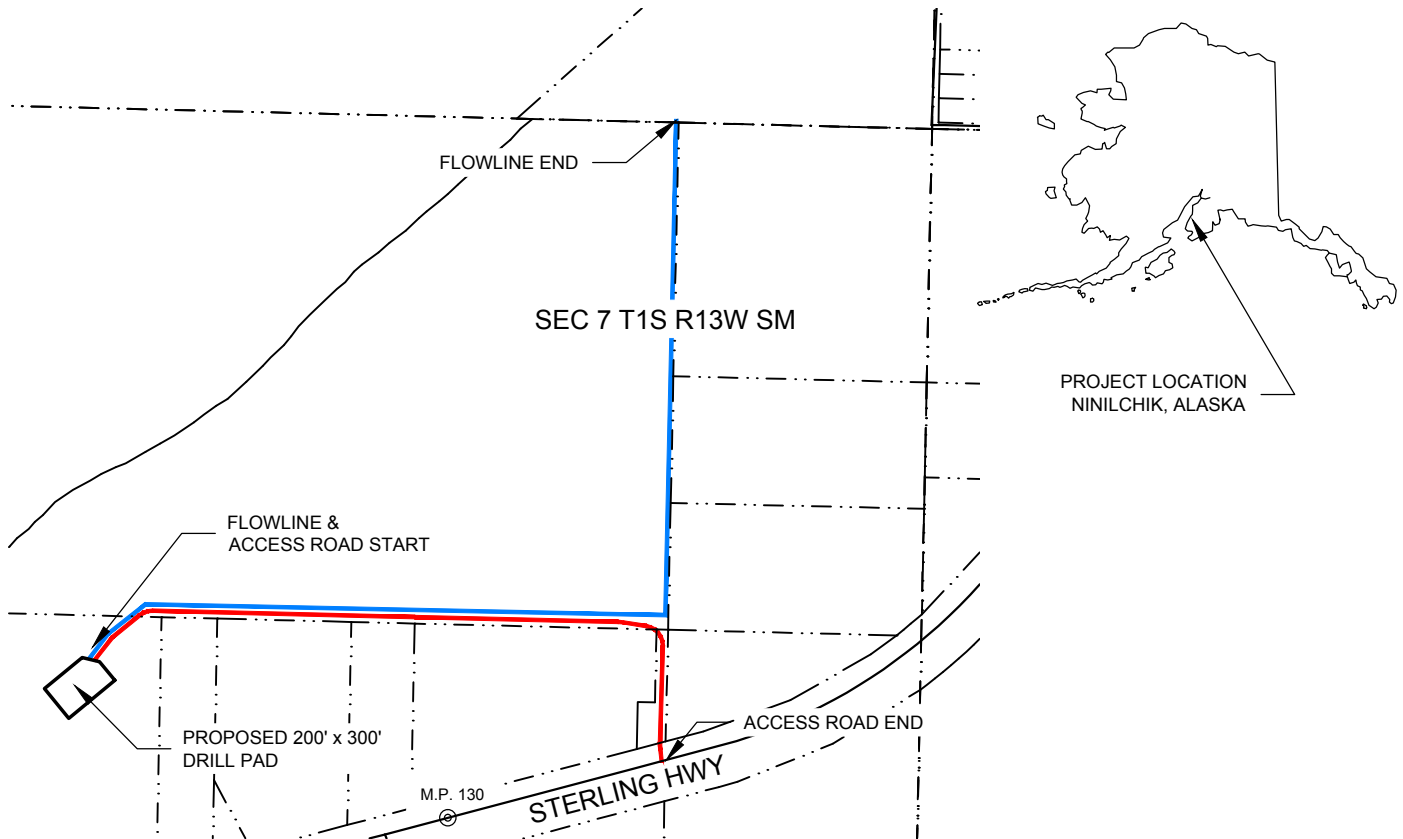
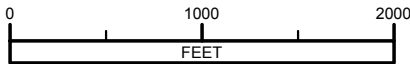


HILCORP ALASKA, LLC KALOTSA PAD ACCESS ROAD, PAD & FLOWLINE



SCALE



VICINITY MAP

INDEX OF SHEETS

SHEET NO.	DESCRIPTION
1	COVER
2-6	TYPICAL SECTIONS
7	DITCH FILL PLAN
8	PAD PLAN VIEW
9-16	PROJECT PLAN VIEWS
17-18	TABLES



Consulting Inc

ENGINEERING - TESTING
SURVEYING - MAPPING
P.O. BOX 468
SOLDOTNA, AK. 99669
VOICE: (907) 283-4218
FAX: (907) 283-3265
WWW.MCLANECG.COM

LOCATION

SECTION 7, T1S, R13W, S.M., AK

PROJECT

KALOTSA PAD
ACCESS ROAD, PAD, & FLOWLINE

APPLICANTS

HILCORP ALASKA

3800 CENTERPOINT DRIVE, STE. 100, ANCHORAGE, AK 99503



Hilcorp Alaska, LLC

REVISION: 3

DATE: 3/13/15

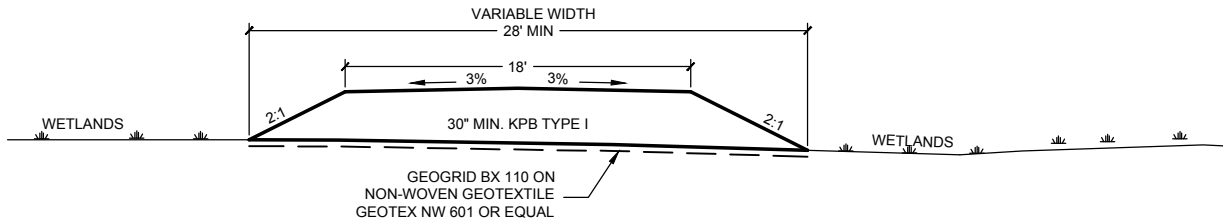
DRAWN BY: BGB

SCALE: 1"=1000'

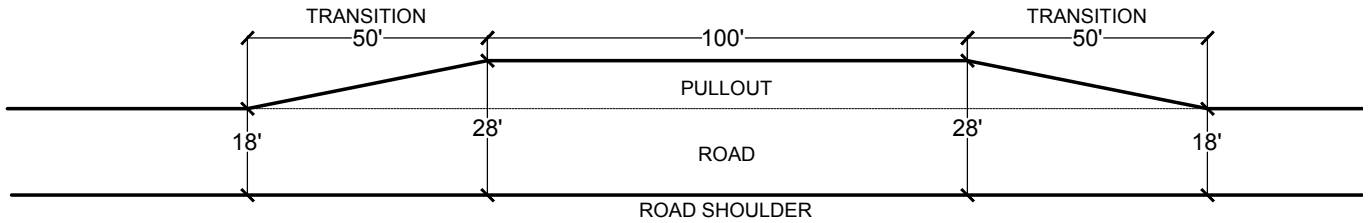
PROJECT NO. 143123

SHEET

1 OF 18



A 18' WIDE ROAD TYPICAL SECTION - WETLANDS
 2 SCALE: 1" = 10' - STA 0+00 - 22+70



- NOTES:
1. ADDITIONAL PULLOUTS WILL BE CONSTRUCTED WHERE HILLY TERRAIN AND LIMITED SITE DISTANCE ARE PREVALENT TO ASSIST TRANSPORTATION NEEDS.
 2. GRAVEL FILL SHALL BE PLACED IN NO GREATER THAN 12" LIFTS AND COMPACTED.
 3. GRAVEL FILL SHALL BE UNDERLAIN WITH GEOTEXTILE.

B 18' WIDE ROAD W/ 10' PULLOUT
 2 SCALE: 1" = 40'



Consulting Inc

ENGINEERING - TESTING
 SURVEYING - MAPPING
 P.O. BOX 468
 SOLDOTNA, AK. 99669
 VOICE: (907) 283-4218
 FAX: (907) 283-3265
 WWW.MCLANECG.COM

LOCATION

SECTION 7, T1S, R13W, S.M., AK

PROJECT

KALOTSA PAD
 ACCESS ROAD, PAD, & FLOWLINE

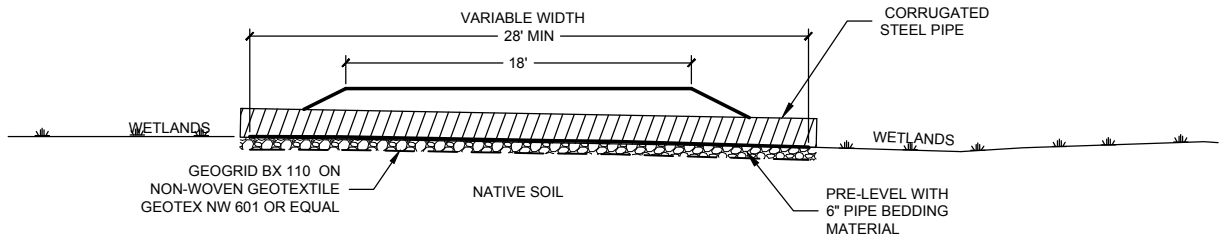
APPLICANTS

HILCORP ALASKA
 3800 CENTERPOINT DRIVE, STE. 100, ANCHORAGE, AK 99503



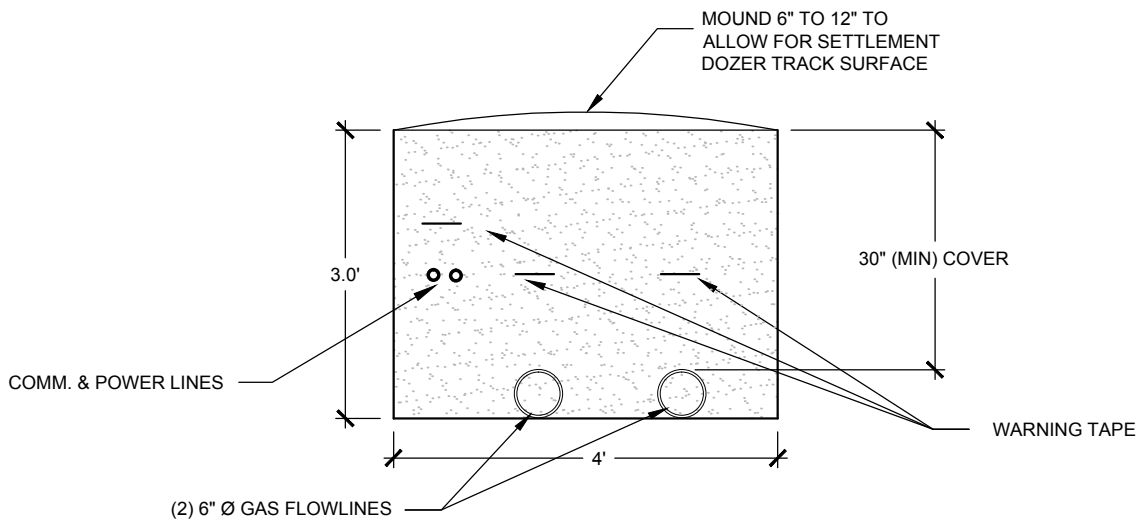
REVISION: 3
DATE: 3/13/15
DRAWN BY: BGB
SCALE: VARIES
PROJECT NO. 143123
SHEET

2 OF 18



1. ALL CULVERTS SHALL BE CORRUGATED STEEL.
2. PRE-LEVEL WITH 6" OF PIPE BEDDING MATERIAL.
3. CROSS CULVERTS IN UPLANDS SHALL BE INSTALLED WITH AN ENLARGED (BELL HOLE) DITCH SECTION ON THE INLET END. FILL TO 6" DEPTH WITH DITCH LINER MATERIAL.
4. CULVERT PLACEMENT FILL IS 2.3 CUBIC YARDS PER CULVERT.

A
3 18' WIDE ROAD-WETLAND W/ CROSS CULVERT TYPICAL SECTION
SCALE: 1" = 10'



B
3 TRENCH TYPICAL SECTION
SCALE: 1" = 2'



ENGINEERING - TESTING
SURVEYING - MAPPING
P.O. BOX 468
SOLDOTNA, AK. 99669
VOICE: (907) 283-4218
FAX: (907) 283-3265
WWW.MCLANECG.COM

LOCATION

SECTION 7, T1S, R13W, S.M., AK

PROJECT

KALOTSA PAD
ACCESS ROAD, PAD, & FLOWLINE

APPLICANTS

HILCORP ALASKA

3800 CENTERPOINT DRIVE, STE. 100, ANCHORAGE, AK 99503



REVISION: 3

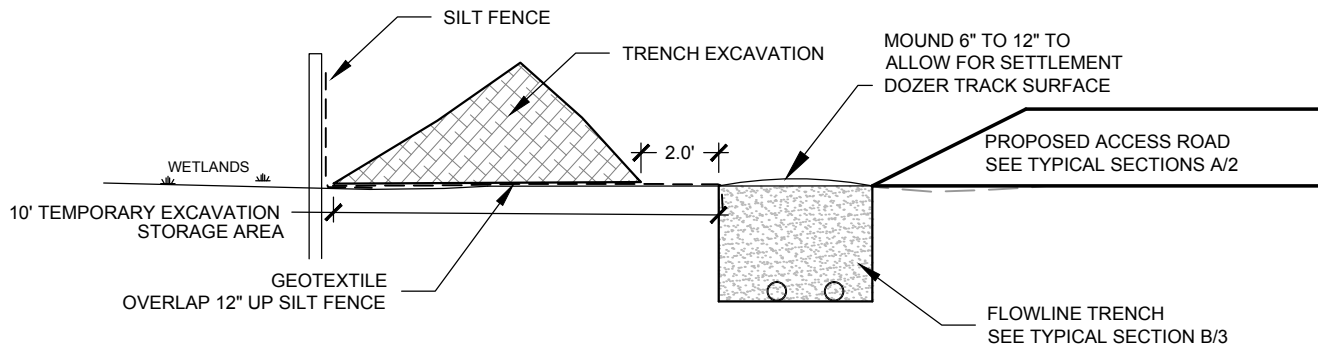
DATE: 3/13/15

DRAWN BY: BGB

SCALE: 1" = 10'

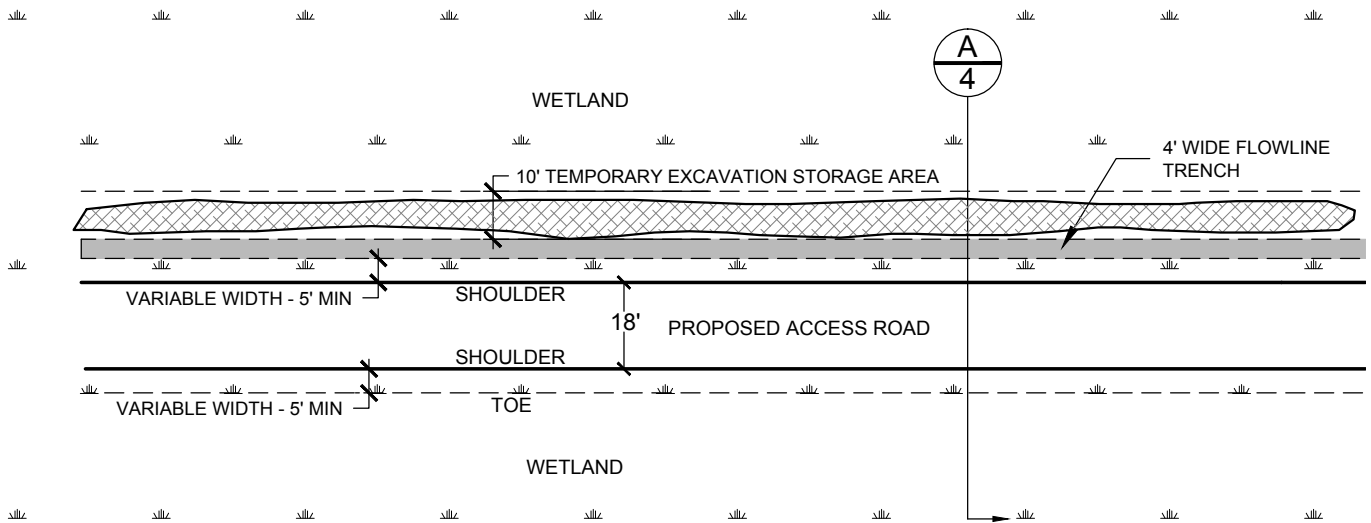
PROJECT NO. 143123

SHEET
3 OF 18



TRENCH EXCAVATION & TEMPORARY EXCAVATION STORAGE TYPICAL SECTION

A
4 SCALE: 1" = 5' - STA FL0+00 - FL19+70



TYPICAL ROAD, TRENCH, & TEMPORARY EXCAVATION STORAGE PLAN

B
4 SCALE: 1" = 40'



Consulting Inc

ENGINEERING - TESTING
SURVEYING - MAPPING
P.O. BOX 468
SOLDOTNA, AK. 99669
VOICE: (907) 283-4218
FAX: (907) 283-3265
WWW.MCLANECG.COM

LOCATION

SECTION 7, T1S, R13W, S.M., AK

PROJECT

KALOTSA PAD
ACCESS ROAD, PAD, & FLOWLINE

APPLICANTS

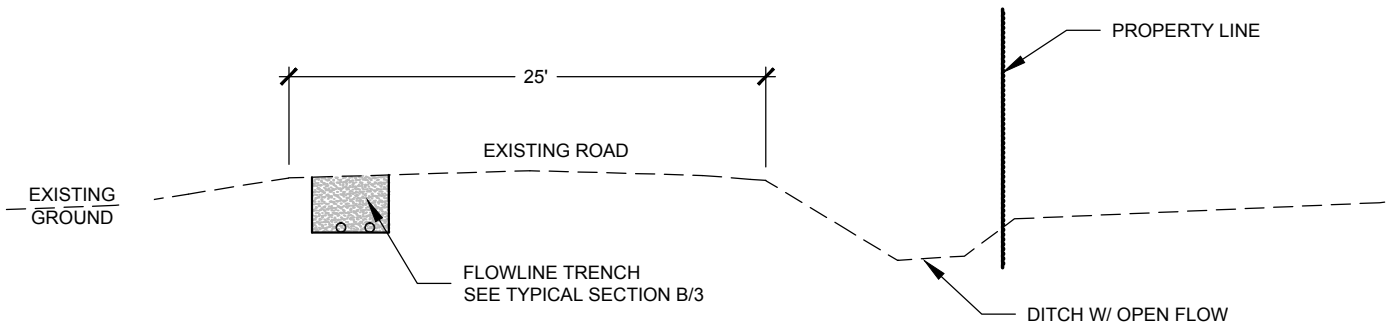
HILCORP ALASKA

3800 CENTERPOINT DRIVE, STE. 100, ANCHORAGE, AK 99503



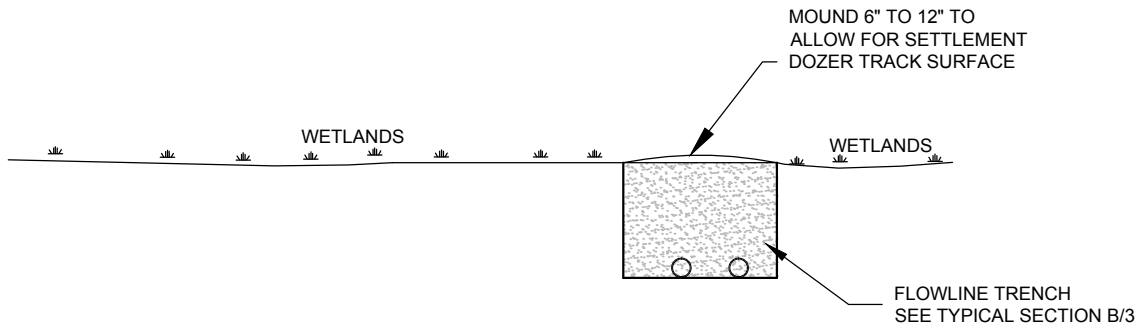
REVISION: 3
DATE: 3/13/15
DRAWN BY: BGB
SCALE: 1" = 5'
PROJECT NO. 143123
SHEET

4 OF 18



NOTE: ALL TRENCH EXCAVATION FROM STATION FL30+10 TO THE SUSAN DIONNE PAD (STA FL58+20) WILL BE STORED IN AN UPLAND AREA ONSITE. SEE SHEET 13.

A TRENCH EXCAVATION TYPICAL SECTION - EXISTING ROAD
5 SCALE: 1" = 10' - FL30+10 - FL56+95



NOTE: ALL TRENCH EXCAVATION FROM STATION 28+65 - 55+45 WILL BE STORED IN AN UPLAND AREA ONSITE.

B TYPICAL TRENCH EXCAVATION TYPICAL - WETLANDS
5 SCALE: 1" = 5' - STA FL56+95 - FL57+82



Consulting Inc

ENGINEERING - TESTING
 SURVEYING - MAPPING
 P.O. BOX 468
 SOLDOTNA, AK. 99669
 VOICE: (907) 283-4218
 FAX: (907) 283-3265
 WWW.MCLANECG.COM

LOCATION

SECTION 7, T1S, R13W, S.M., AK

PROJECT

KALOTSA PAD
 ACCESS ROAD, PAD, & FLOWLINE

APPLICANTS

HILCORP ALASKA

3800 CENTERPOINT DRIVE, STE. 100, ANCHORAGE, AK 99503



REVISION: 3

DATE: 3/13/15

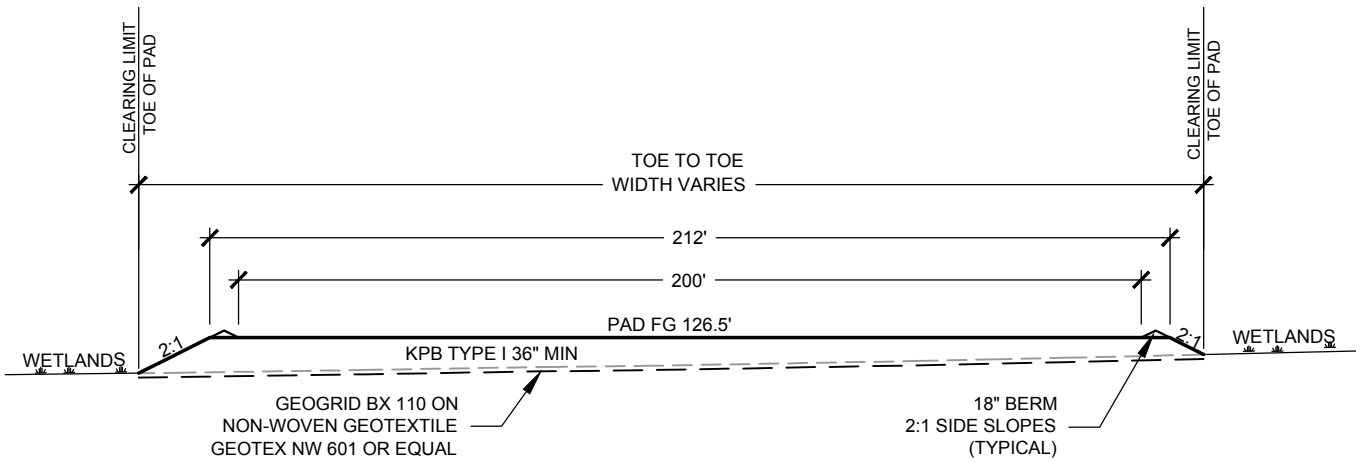
DRAWN BY: BGB

SCALE: VARIES

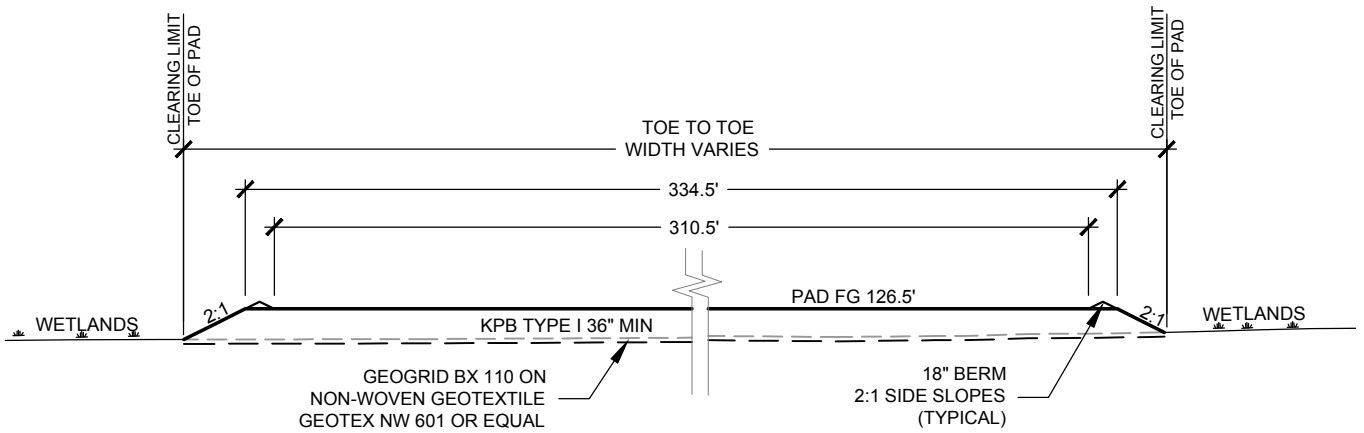
PROJECT NO. 143123

SHEET

5 OF 18



A PAD TYPICAL SECTION
 6 SCALE: 1" = 40' - FACING NORTHEAST



B PAD TYPICAL SECTION
 6 SCALE: 1" = 40' - FACING NORTHWEST



McLANE Consulting Inc

ENGINEERING - TESTING
 SURVEYING - MAPPING
 P.O. BOX 468
 SOLDOTNA, AK. 99669
 VOICE: (907) 283-4218
 FAX: (907) 283-3265
 WWW.MCLANECG.COM

LOCATION

SECTION 7, T1S, R13W, S.M., AK

PROJECT

KALOTSA PAD
 ACCESS ROAD, PAD, & FLOWLINE

APPLICANTS

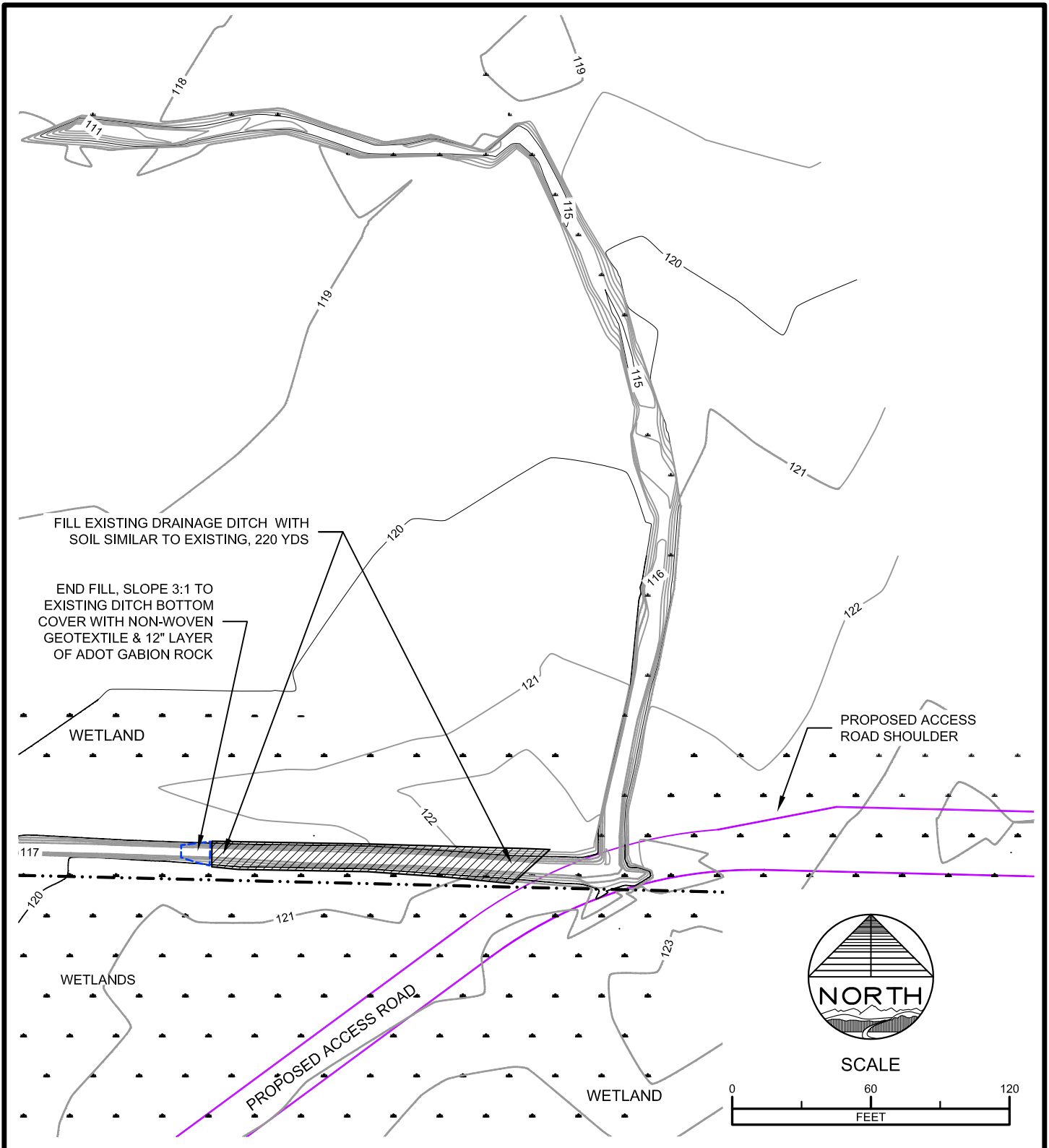
HILCORP ALASKA

3800 CENTERPOINT DRIVE, STE. 100, ANCHORAGE, AK 99503



REVISION: 3
 DATE: 3/13/15
 DRAWN BY: BGB
 SCALE: VARIES
 PROJECT NO. 143123
 SHEET

6 OF 18



Consulting Inc

ENGINEERING - TESTING
SURVEYING - MAPPING
P.O. BOX 468
SOLDOTNA, AK. 99669
VOICE: (907) 283-4218
FAX: (907) 283-3265
WWW.MCLANECG.COM

LOCATION

SECTION 7, T1S, R13W, S.M., AK

PROJECT

KALOTSA PAD
ACCESS ROAD, PAD, & FLOWLINE

APPLICANTS

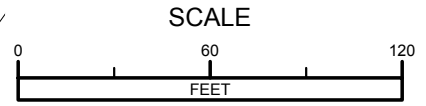
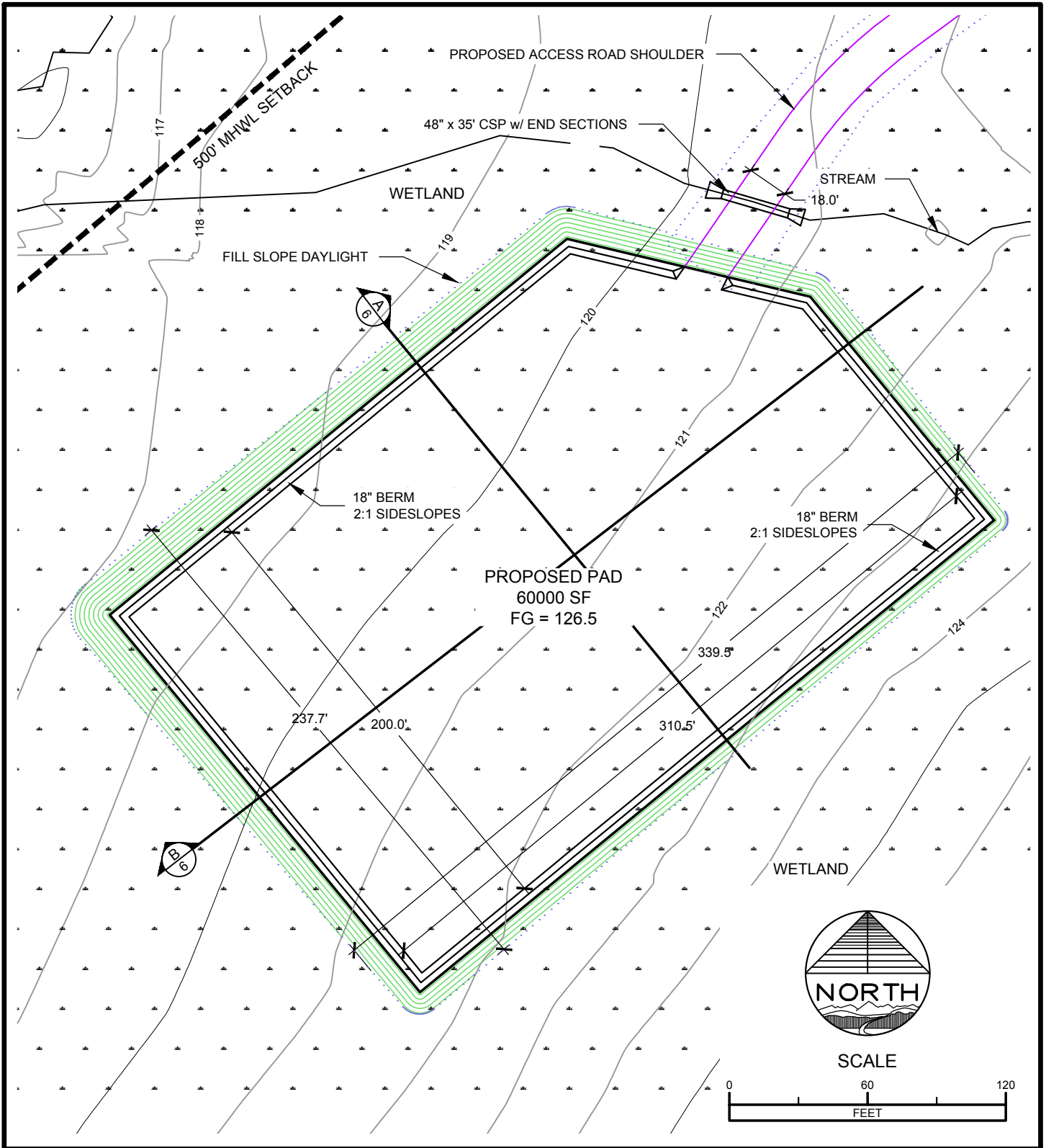
HILCORP ALASKA

3800 CENTERPOINT DRIVE, STE. 100, ANCHORAGE, AK 99503



REVISION: 3
DATE: 3/13/15
DRAWN BY: BGB
SCALE: 1"=60'
PROJECT NO. 143123
SHEET

7 OF 18

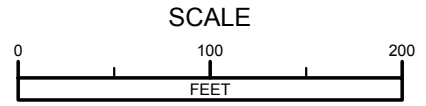
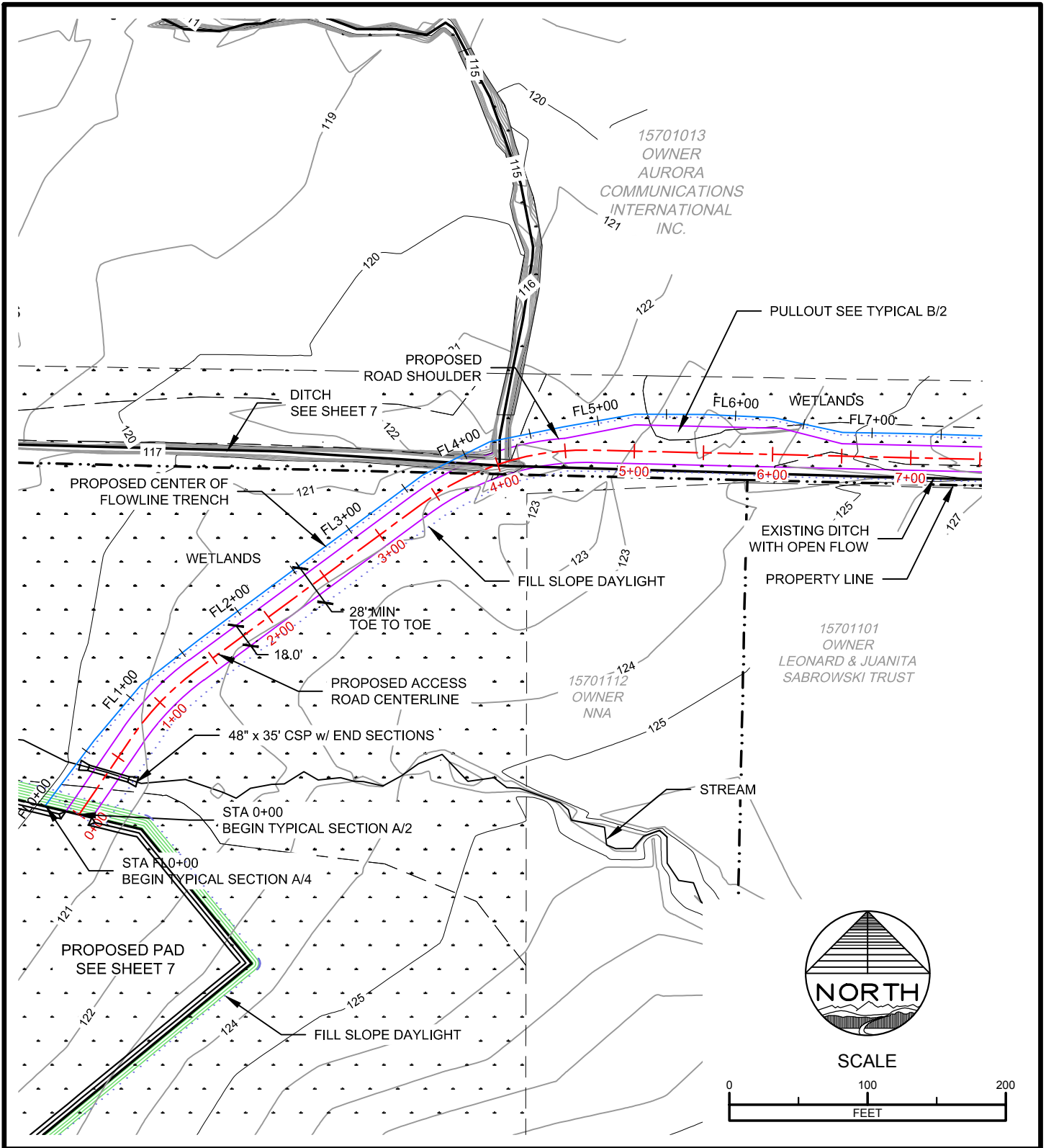



ENGINEERING - TESTING
 SURVEYING - MAPPING
 P.O. BOX 468
 SOLDOTNA, AK. 99669
 VOICE: (907) 283-4218
 FAX: (907) 283-3265
 WWW.MCLANECG.COM

LOCATION	SECTION 7, T1S, R13W, S.M., AK
PROJECT	KALOTSA PAD ACCESS ROAD, PAD, & FLOWLINE
APPLICANTS	HILCORP ALASKA 3800 CENTERPOINT DRIVE, STE. 100, ANCHORAGE, AK 99503



REVISION: 3
DATE: 3/13/15
DRAWN BY: BGB
SCALE: 1"=60'
PROJECT NO. 143123
SHEET 8 OF 18



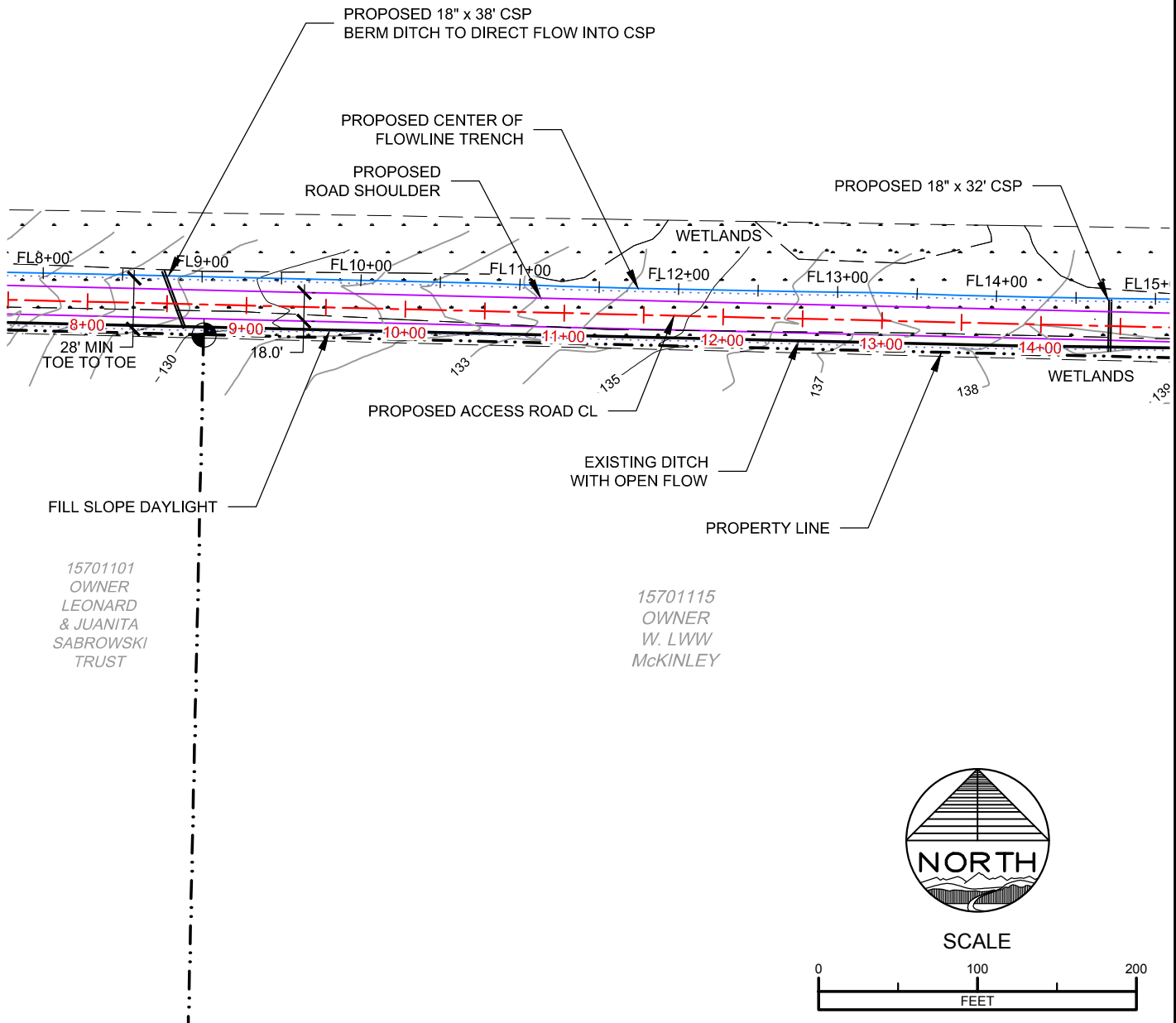
ENGINEERING - TESTING
SURVEYING - MAPPING
P.O. BOX 468
SOLDOTNA, AK. 99669
VOICE: (907) 283-4218
FAX: (907) 283-3265
WWW.MCLANECG.COM

LOCATION	SECTION 7, T1S, R13W, S.M., AK
PROJECT	KALOTSA PAD ACCESS ROAD, PAD, & FLOWLINE
APPLICANTS	HILCORP ALASKA 3800 CENTERPOINT DRIVE, STE. 100, ANCHORAGE, AK 99503



REVISION: 3
DATE: 3/13/15
DRAWN BY: BGB
SCALE: 1"=100'
PROJECT NO. 143123
SHEET 9 OF 18

15701013
 OWNER
 AURORA
 COMMUNICATIONS
 INTERNATIONAL
 INC.

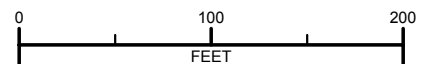


15701101
 OWNER
 LEONARD
 & JUANITA
 SABROWSKI
 TRUST

15701115
 OWNER
 W. LWW
 MCKINLEY



SCALE



Consulting Inc

ENGINEERING - TESTING
 SURVEYING - MAPPING
 P.O. BOX 468
 SOLDOTNA, AK. 99669
 VOICE: (907) 283-4218
 FAX: (907) 283-3265
 WWW.MCLANECG.COM

LOCATION

SECTION 7, T1S, R13W, S.M., AK

PROJECT

KALOTSA PAD
 ACCESS ROAD, PAD, & FLOWLINE

APPLICANTS

HILCORP ALASKA

3800 CENTERPOINT DRIVE, STE. 100, ANCHORAGE, AK 99503



REVISION: 3

DATE: 3/13/15

DRAWN BY: BGB

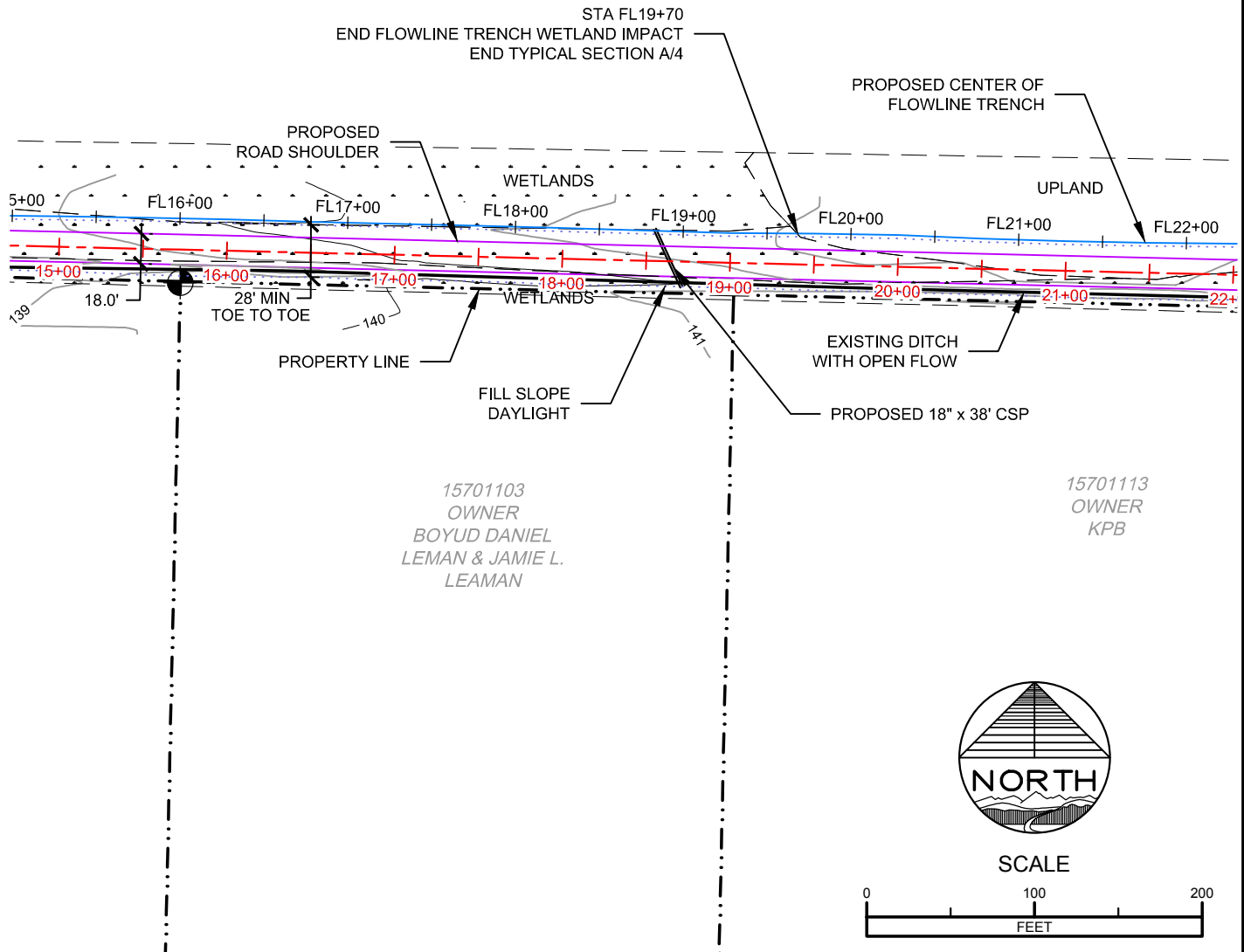
SCALE: 1"=100'

PROJECT NO. 143123

SHEET

10 OF 18

15701013
 OWNER
 AURORA
 COMMUNICATIONS
 INTERNATIONAL
 INC.

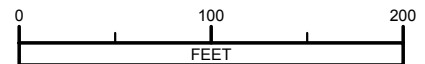


15701103
 OWNER
 BOYUD DANIEL
 LEMAN & JAMIE L.
 LEAMAN

15701113
 OWNER
 KPB



SCALE



Consulting Inc

ENGINEERING - TESTING
 SURVEYING - MAPPING
 P.O. BOX 468
 SOLDOTNA, AK. 99669
 VOICE: (907) 283-4218
 FAX: (907) 283-3265
 WWW.MCLANECG.COM

LOCATION

SECTION 7, T1S, R13W, S.M., AK

PROJECT

KALOTSA PAD
 ACCESS ROAD, PAD, & FLOWLINE

APPLICANTS

HILCORP ALASKA

3800 CENTERPOINT DRIVE, STE. 100, ANCHORAGE, AK 99503



Hilcorp Alaska, LLC

REVISION: 3

DATE: 3/13/15

DRAWN BY: BGB

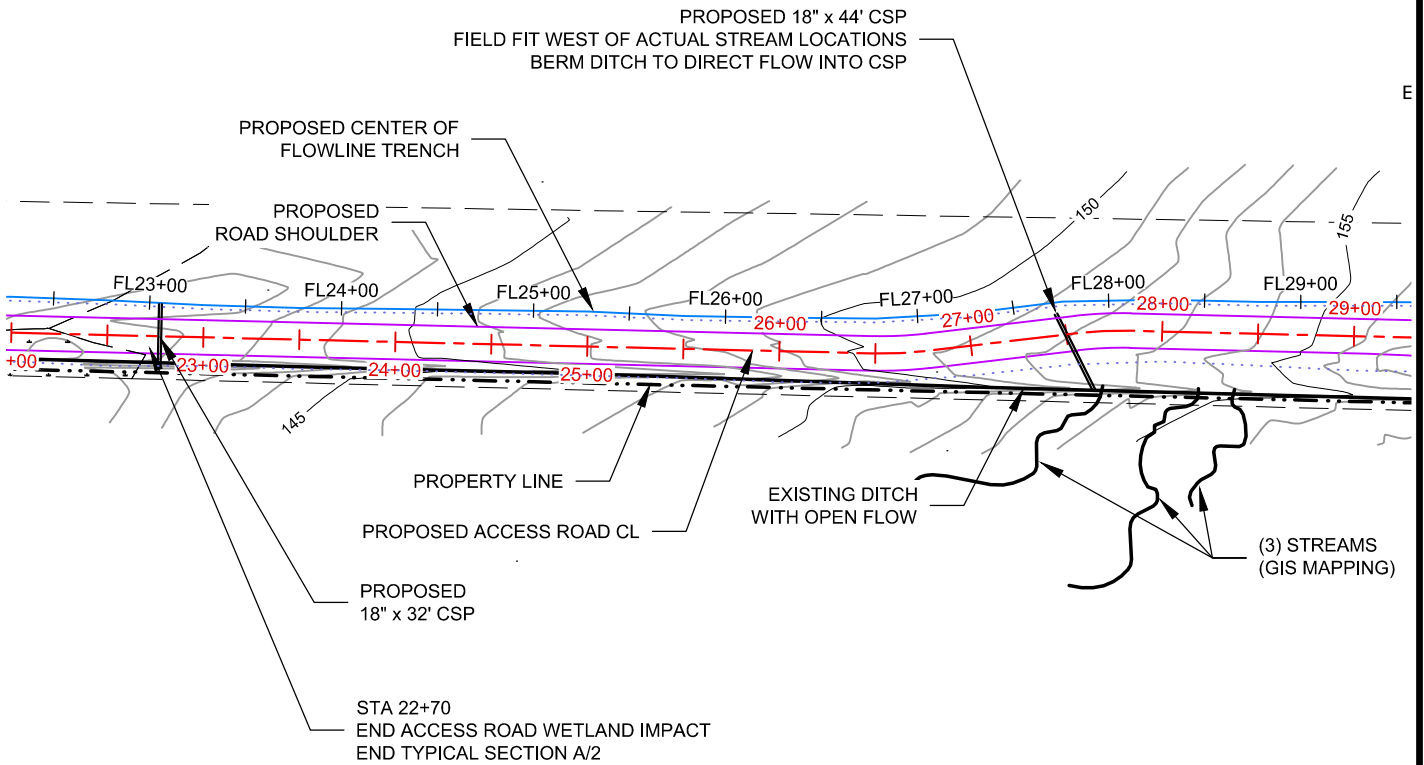
SCALE: 1"=100'

PROJECT NO. 143123

SHEET

11 OF 18

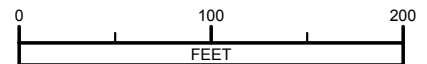
15701013
 OWNER
 AURORA
 COMMUNICATIONS
 INTERNATIONAL
 INC.



15701113
 OWNER
 KPB



SCALE



Consulting Inc

ENGINEERING - TESTING
 SURVEYING - MAPPING
 P.O. BOX 468
 SOLDOTNA, AK. 99669
 VOICE: (907) 283-4218
 FAX: (907) 283-3265
 WWW.MCLANECG.COM

LOCATION

SECTION 7, T1S, R13W, S.M., AK

PROJECT

KALOTSA PAD
 ACCESS ROAD, PAD, & FLOWLINE

APPLICANTS

HILCORP ALASKA

3800 CENTERPOINT DRIVE, STE. 100, ANCHORAGE, AK 99503



REVISION: 3

DATE: 3/13/15

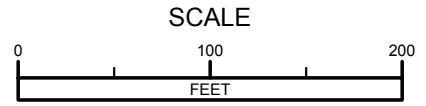
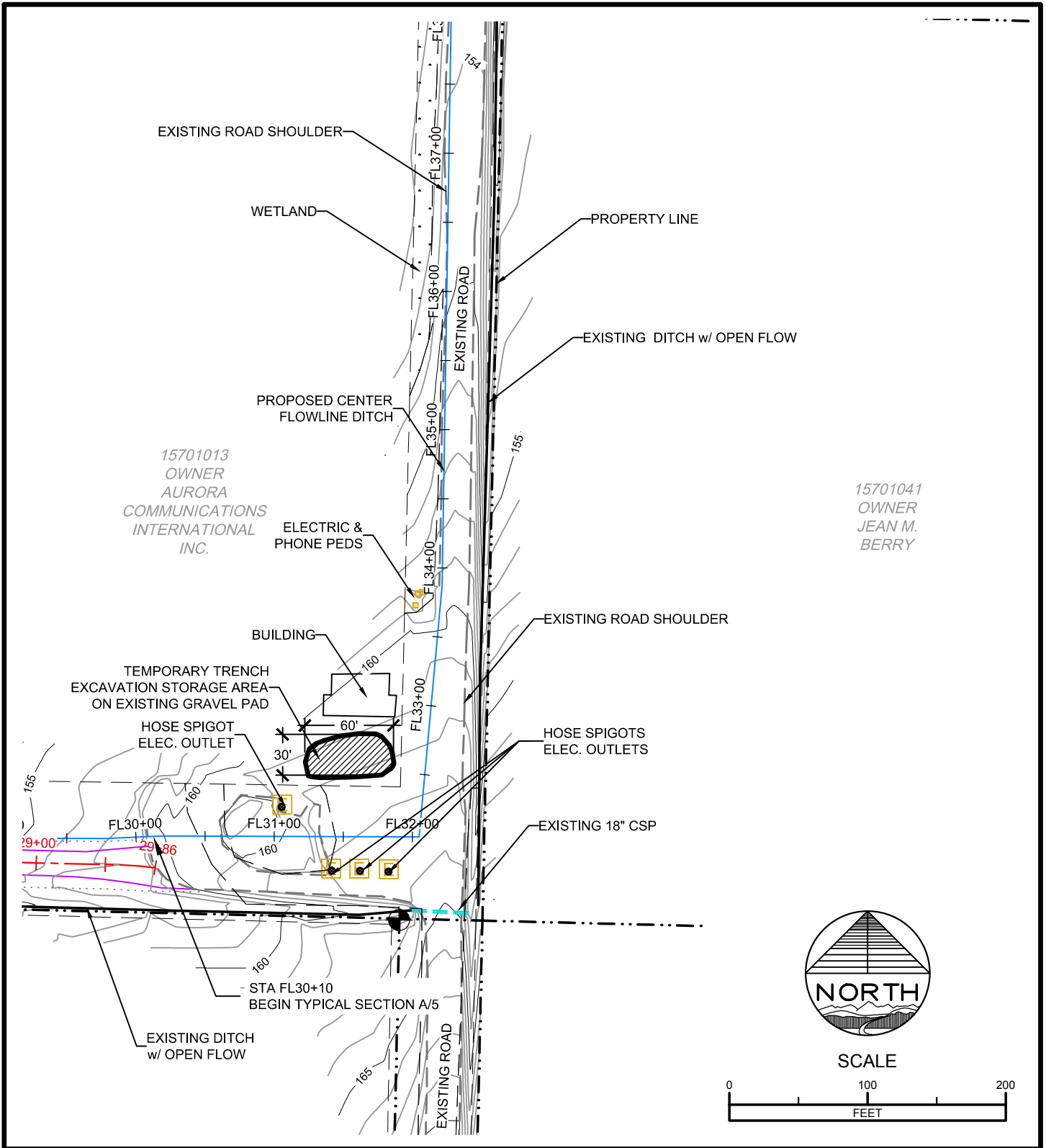
DRAWN BY: BGB

SCALE: 1"=100'

PROJECT NO. 143123

SHEET

12 OF 18



ENGINEERING - TESTING
 SURVEYING - MAPPING
 P.O. BOX 468
 SOLDOTNA, AK. 99669
 VOICE: (907) 283-4218
 FAX: (907) 283-3265
 WWW.MCLANECG.COM

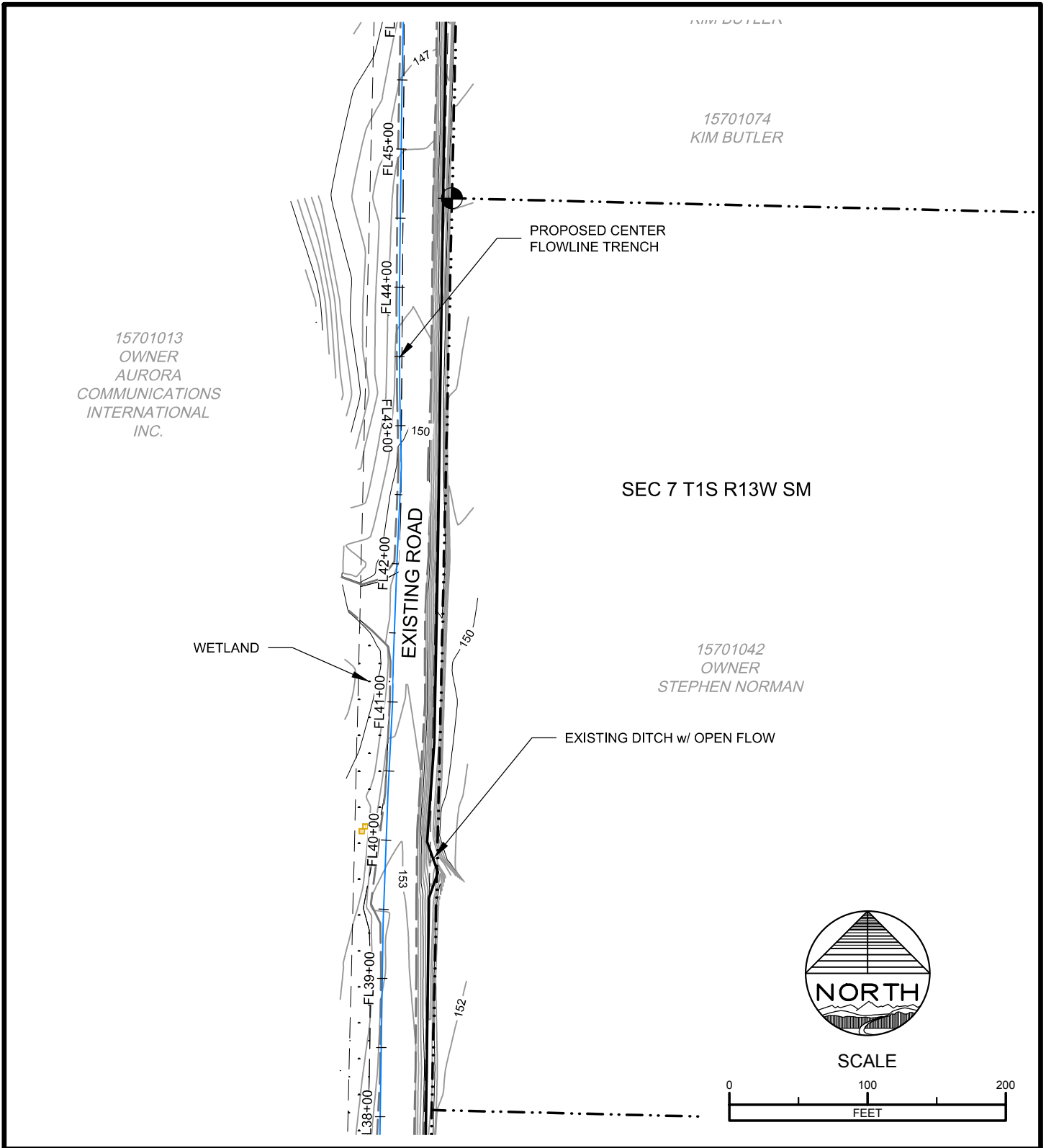
LOCATION
SECTION 7, T1S, R13W, S.M., AK

PROJECT
**KALOTSA PAD
 ACCESS ROAD, PAD, & FLOWLINE**

APPLICANTS
HILCORP ALASKA
 3800 CENTERPOINT DRIVE, STE. 100, ANCHORAGE, AK 99503



REVISION: 3
 DATE: 3/13/15
 DRAWN BY: BGB
 SCALE: 1"=100'
 PROJECT NO. 143123
 SHEET
13 OF 18



Consulting Inc

ENGINEERING - TESTING
SURVEYING - MAPPING
P.O. BOX 468
SOLDOTNA, AK. 99669
VOICE: (907) 283-4218
FAX: (907) 283-3265
WWW.MCLANECG.COM

LOCATION

SECTION 7, T1S, R13W, S.M., AK

PROJECT

KALOTSA PAD
ACCESS ROAD, PAD, & FLOWLINE

APPLICANTS

HILCORP ALASKA

3800 CENTERPOINT DRIVE, STE. 100, ANCHORAGE, AK 99503



REVISION: 3

DATE: 3/13/15

DRAWN BY: BGB

SCALE: 1"=100'

PROJECT NO. 143123

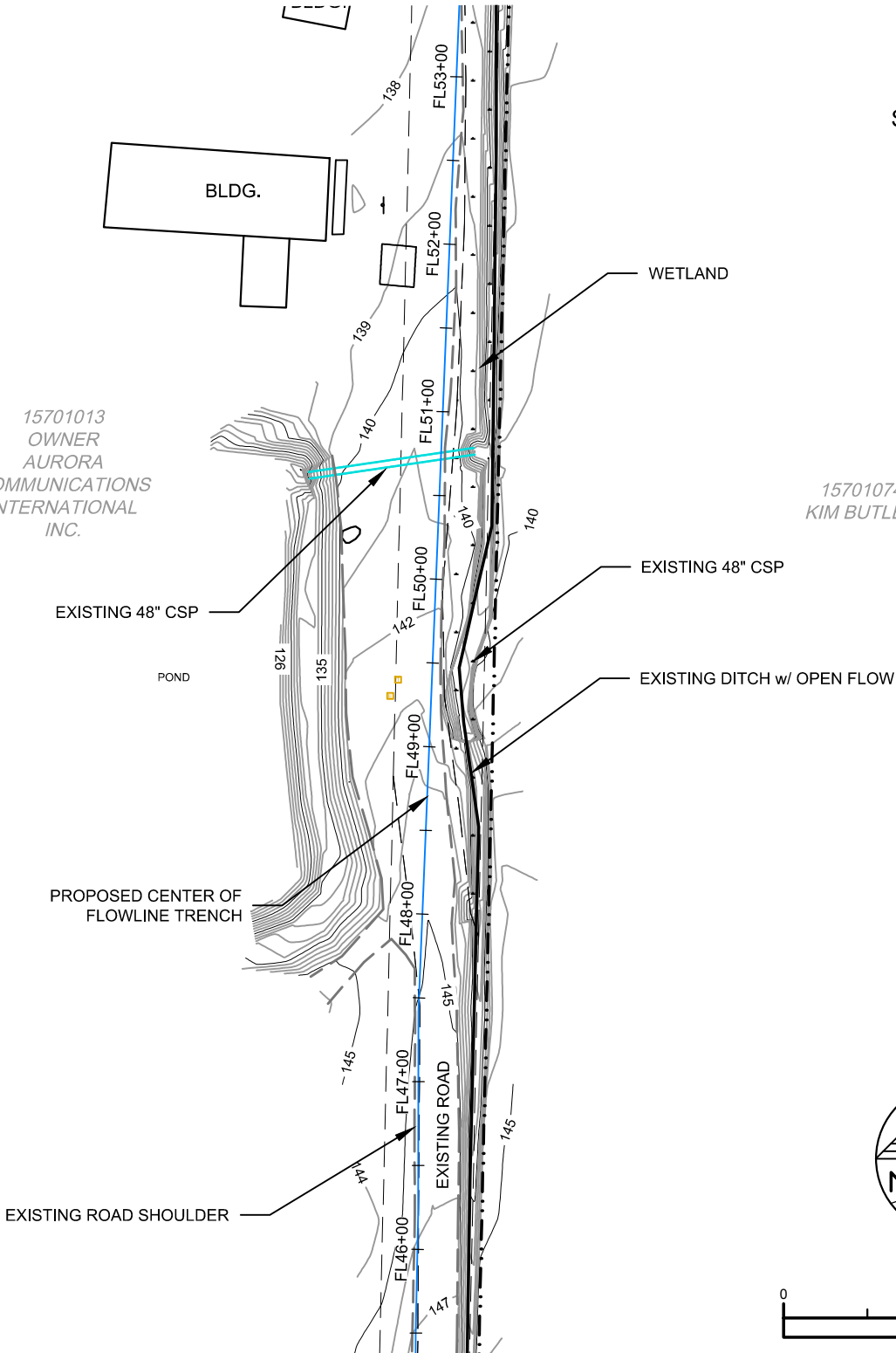
SHEET

14 OF 18

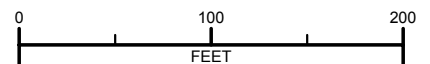
SEC 7 T1S R13W SM

15701013
OWNER
AURORA
COMMUNICATIONS
INTERNATIONAL
INC.

15701074
KIM BUTLER



SCALE



Consulting Inc

ENGINEERING - TESTING
SURVEYING - MAPPING
P.O. BOX 468
SOLDOTNA, AK. 99669
VOICE: (907) 283-4218
FAX: (907) 283-3265
WWW.MCLANECG.COM

LOCATION

SECTION 7, T1S, R13W, S.M., AK

PROJECT

KALOTSA PAD
ACCESS ROAD, PAD, & FLOWLINE

APPLICANTS

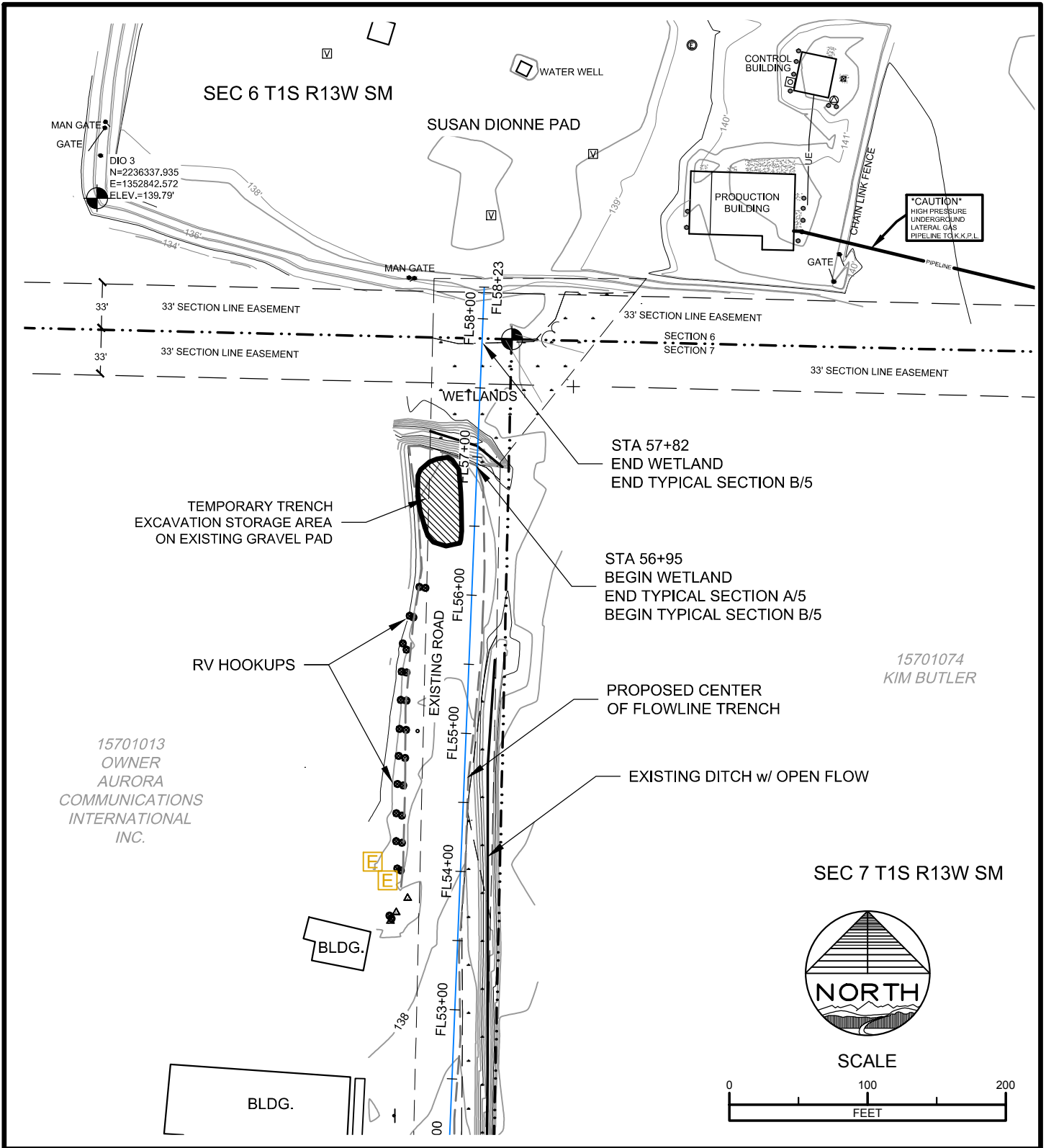
HILCORP ALASKA

3800 CENTERPOINT DRIVE, STE. 100, ANCHORAGE, AK 99503



REVISION: 3
DATE: 3/13/15
DRAWN BY: BGB
SCALE: 1"=100'
PROJECT NO. 143123
SHEET

15 OF 18



ENGINEERING - TESTING
 SURVEYING - MAPPING
 P.O. BOX 468
 SOLDOTNA, AK. 99669
 VOICE: (907) 283-4218
 FAX: (907) 283-3265
 WWW.MCLANECG.COM

LOCATION
 SECTION 7, T1S, R13W, S.M., AK

PROJECT
 KALOTSA PAD
 ACCESS ROAD, PAD, & FLOWLINE

APPLICANTS
 HILCORP ALASKA
 3800 CENTERPOINT DRIVE, STE. 100, ANCHORAGE, AK 99503



REVISION: 3
 DATE: 3/13/15
 DRAWN BY: BGB
 SCALE: 1"=100'
 PROJECT NO. 143123
 SHEET
 16 OF 18

PAD DATA

TOTAL FOOTPRINT		IMPACTED WETLAND AREA		TOTAL EXCAVATION		WETLAND EXCAVATION		TOTAL FILL		WETLAND FILL	
77464	SF	77464	SF	0	CF	0	CF	409381	CF	409381	CF
1.78	AC	1.78	AC	0	CY	0	CY	15162	CY	15162	CY

ACCESS ROAD DATA

TOTAL FOOTPRINT		IMPACTED WETLAND AREA		TOTAL EXCAVATION		WETLAND EXCAVATION		TOTAL FILL		WETLAND FILL	
94476	SF	67091	SF	7182	CF	0	CF	199229	CF	154216	CF
2.17	AC	1.54	AC	266	CY	0	CY	7379	CY	5712	CY

ACCESS ROAD DATA: TOTAL LENGTH = 2986.2 LF (2270 LF WETLAND); MIN. WIDTH = 28'; MIN. FILL DEPTH 2.5'

FLOWLINE TRENCH DATA

TOTAL FOOTPRINT		IMPACTED WETLAND AREA		TOTAL EXCAVATION		WETLAND EXCAVATION		TOTAL FILL		WETLAND FILL	
23292	SF	8228	SF	69876	CF	24684	CF	0	CF	0	CF
0.53	AC	0.19	AC	2588	CY	914	CY	0	CY	0	CY

FLOWLINE TRENCH DATA: TOTAL LENGTH = 5823 LF (2057 LF WETLAND); TRENCH AREA = 12 SF, TRENCH WIDTH = 4'



ENGINEERING - TESTING
SURVEYING - MAPPING
P.O. BOX 468
SOLDOTNA, AK. 99669
VOICE: (907) 283-4218
FAX: (907) 283-3265
WWW.MCLANECG.COM

LOCATION

SECTION 7, T1S, R13W, S.M., AK

PROJECT

KALOTSA PAD
ACCESS ROAD, PAD, & FLOWLINE

APPLICANTS

HILCORP ALASKA

3800 CENTERPOINT DRIVE, STE. 100, ANCHORAGE, AK 99503



REVISION: 3

DATE: 3/13/15

DRAWN BY: BGB

SCALE: N/A

PROJECT NO. 143123

SHEET

17 OF 18

FLOWLINE TEMPORARY EXCAVATION STORAGE DATA

TOTAL FOOTPRINT		IMPACTED WETLAND AREA		TOTAL EXCAVATION		WETLAND EXCAVATION		TOTAL FILL		WETLAND FILL	
30100	SF	19700	SF	0	CF	0	CF	36120	CF	23640	CF
0.69	AC	0.45	AC	0	CY	0	CY	1338	CY	876	CY

NOTE: FILL QUANTITY IS TEMPORARY STORAGE OF EXCAVATED TRENCH MATERIAL. MATERIAL WILL BE PLACED ON GEOTEXTILE FABRIC IN WETLAND AREAS. TOTAL LENGTH = 3010 LF (1970 LF WETLAND); WIDTH = 10'; AREA = 12 SF

EXISTING DRAINAGE FILL

TOTAL FOOTPRINT		IMPACTED WETLAND AREA		TOTAL EXCAVATION		WETLAND EXCAVATION		TOTAL FILL		WETLAND FILL	
1766	SF	1766	SF	0	CF	0	CF	6156	CF	6156	CF
0.04	AC	0.04	AC	0	CY	0	CY	228	CY	228	CY

NOTE: TOTAL FILL = 228CY (220 CY PEAT & 8 CY GABION ROCK)

TOTAL QUANTITIES

TOTAL FOOTPRINT		IMPACTED WETLAND AREA		TOTAL EXCAVATION		WETLAND EXCAVATION		TOTAL FILL		TOTAL WETLAND FILL	
227098	SF	174249	SF	77058	CF	24684	CF	650887	CF	593393	CF
5.21	AC	4.00	AC	2854	CY	914	CY	24107	CY	21985	CY

NOTE: AN ADDITIONAL 7.3 CY (2.3 CY 18" CSP * 5.0 CY 48" CSP) OF BEDDING FOR WETLAND CULVERTS (CSP) IN WETLAND.



ENGINEERING - TESTING
SURVEYING - MAPPING
P.O. BOX 468
SOLDOTNA, AK. 99669
VOICE: (907) 283-4218
FAX: (907) 283-3265
WWW.MCLANECG.COM

LOCATION

SECTION 7, T1S, R13W, S.M., AK

PROJECT

KALOTSA PAD
ACCESS ROAD, PAD, & FLOWLINE

APPLICANTS

HILCORP ALASKA

3800 CENTERPOINT DRIVE, STE. 100, ANCHORAGE, AK 99503



REVISION: 3
DATE: 3/13/15
DRAWN BY: BGB
SCALE: N/A
PROJECT NO. 143123
SHEET

18

OF 18