



US Army Corps
of Engineers
Alaska District

Special Public Notice

Regulatory Division (1145)
CEPOA-RD
Post Office Box 6898
JBER, Alaska 99506-0898

ISSUANCE DATE: September 27, 2022

REFERENCE NUMBER: POA-2010-00309

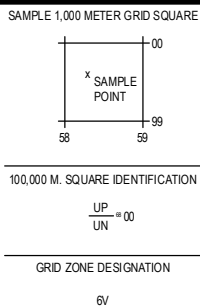
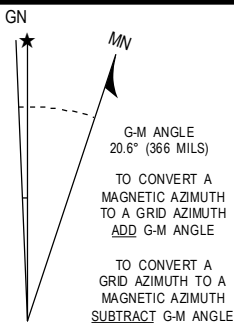
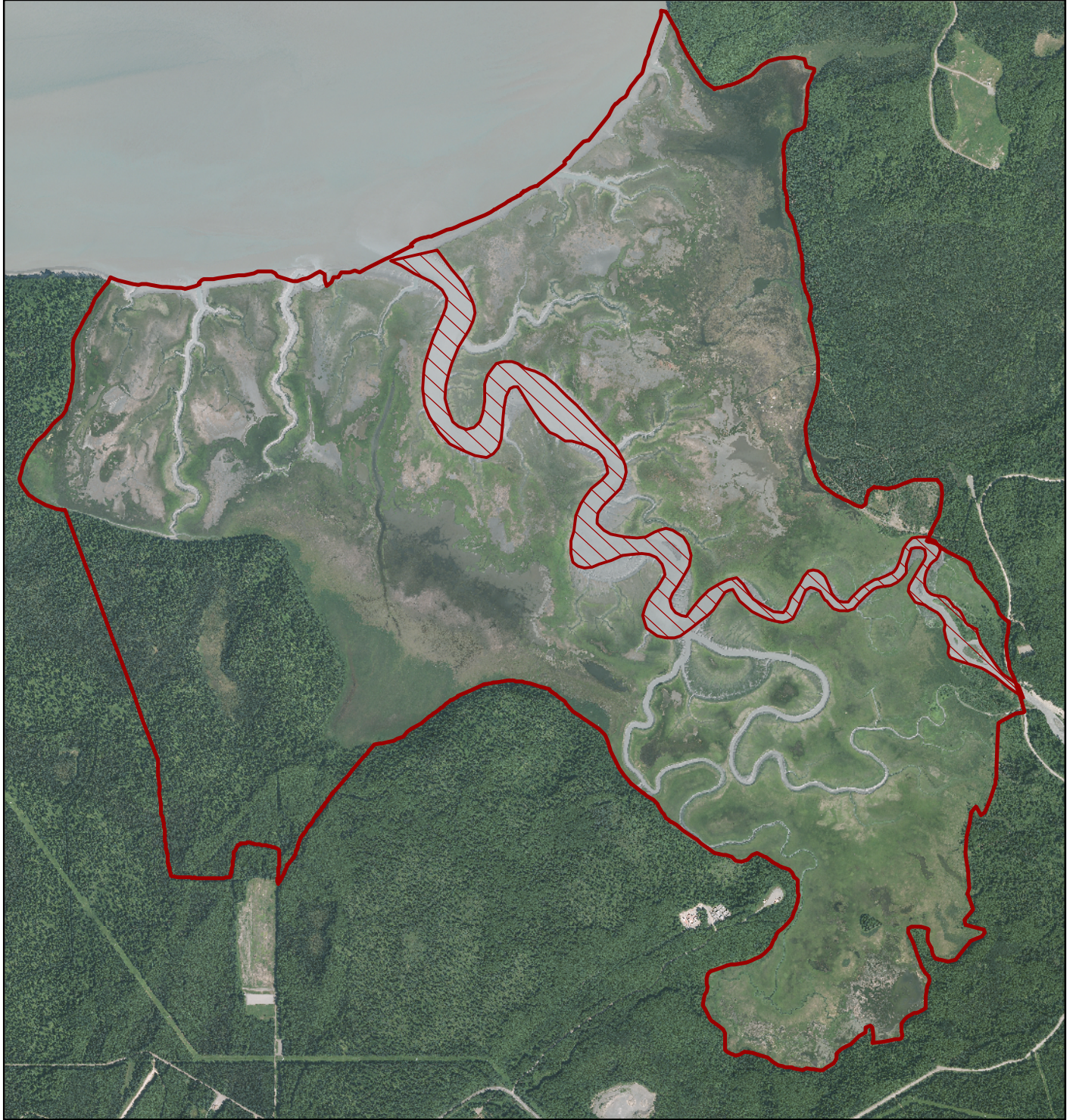
Interested parties are hereby notified that in response to a request by the United States Army – Alaska (USARAK) and pursuant to the U.S. Army Corps of Engineers (Corps) authority in Section 7 of the Rivers and Harbors Act of 1917 (40 Stat 266; 33 U.S.C. 1) and Chapter XIX of the Army Appropriations Act of 1919 (40 Stat 892; 33 U.S.C. 3), the Corps is amending its danger zone regulations to establish a permanent restricted area at the mouth of Eagle River on Joint Base Elmendorf – Richardson (JBER), Alaska.

The restricted area will be added at 33 CFR 334.1305 and becomes effective on September 27, 2022. The restricted area is located in navigable waters extending from the span of Bravo Bridge across Eagle River to the mouth of Eagle River at Knik Arm (Eagle River channel). Establishment of the restricted area will prohibit all watercraft navigations and individuals from entering an active military range munitions impact area at all times, except for authorized vessels and individuals engaged in support of military training and management activities. The restricted area's establishment is for the purpose of public safety. The restricted area will be enforced under USARAK 350-2, Range Safety, or other regulations as the USARAK Commander may designate.

District Commander
U.S. Army, Corps of Engineers

Enclosure

Restricted Area Eagle River Impact Area



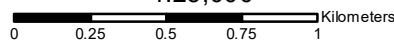
Military Elements

- Restricted Area
- Impact Area
- Training Area
- Installation Boundary

Map Elements

- Stream
- Intermittent Water
- Permanent Water
- Wetland
- Forest
- Open Woodland
- Scrub

1:25,000



ELLIPSOID WORLD GEODETIC SYSTEM 1984
 GRID 1,000 METER UTM ZONE 6
 PROJECTION TRANSVERSE MERCATOR
 VERTICAL DATUM MEAN SEA LEVEL
 HORIZONTAL DATUM WORLD GEODETIC SYSTEM 1984