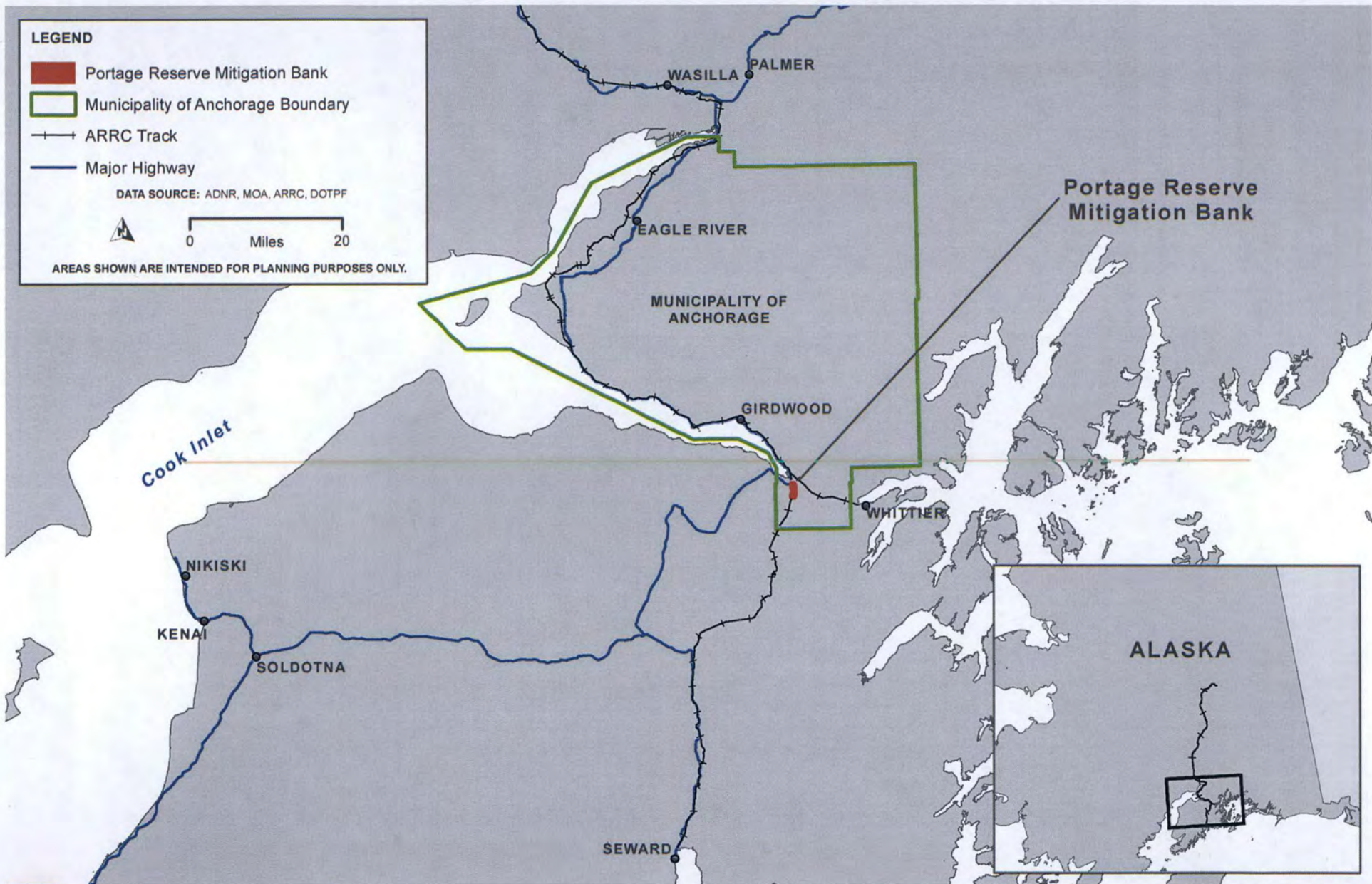
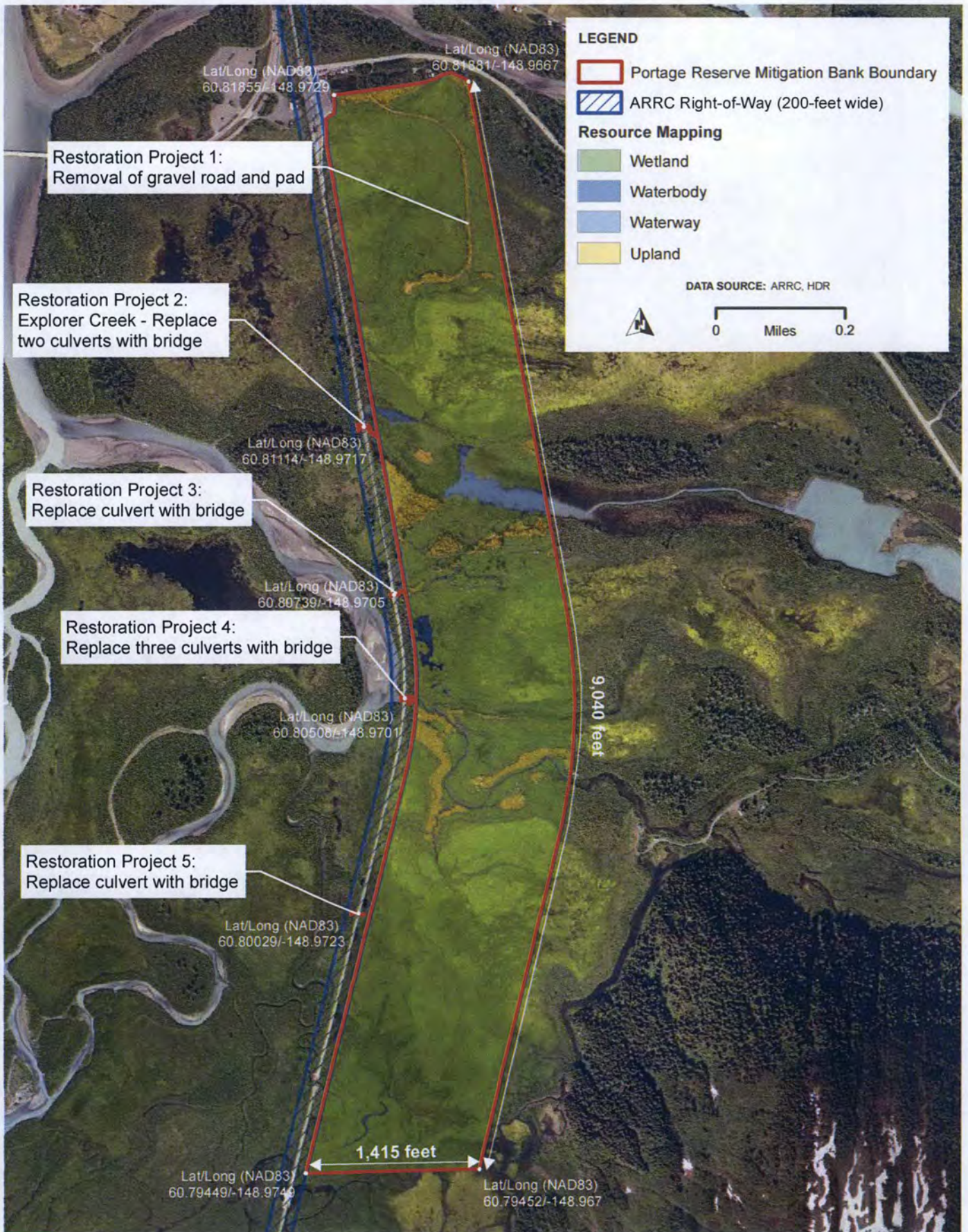


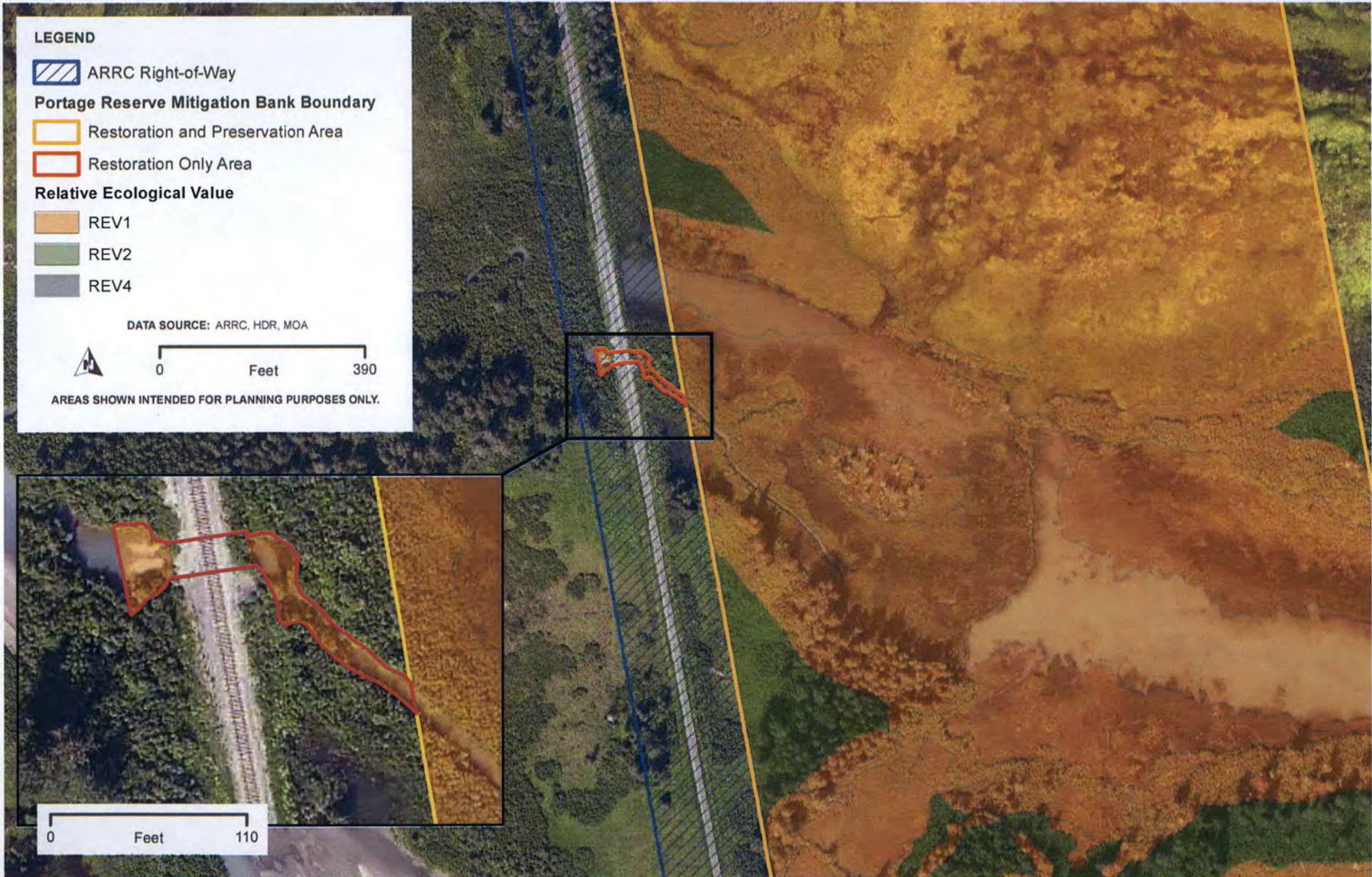
Figures

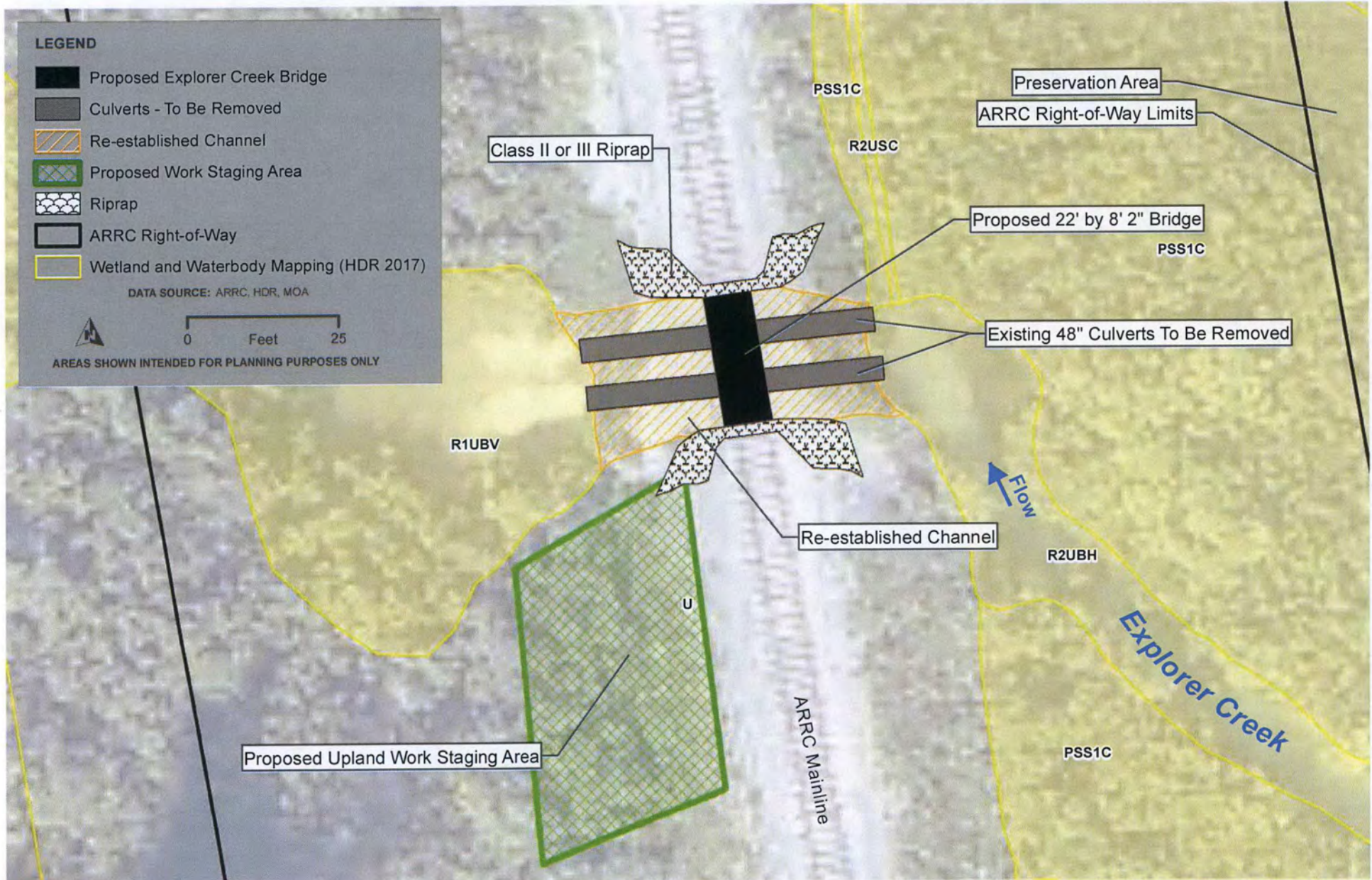




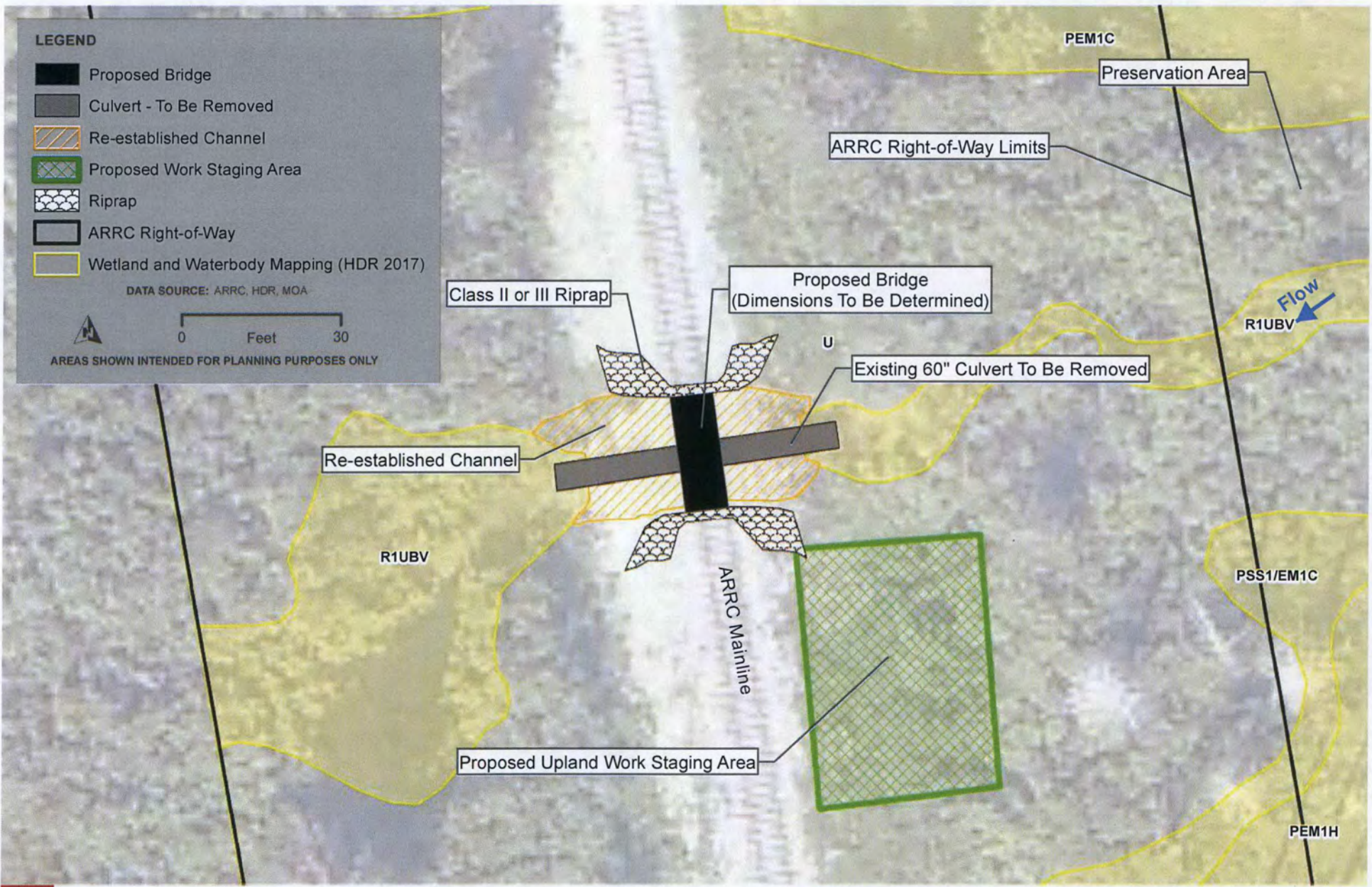








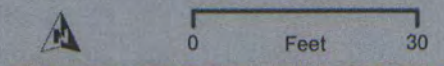




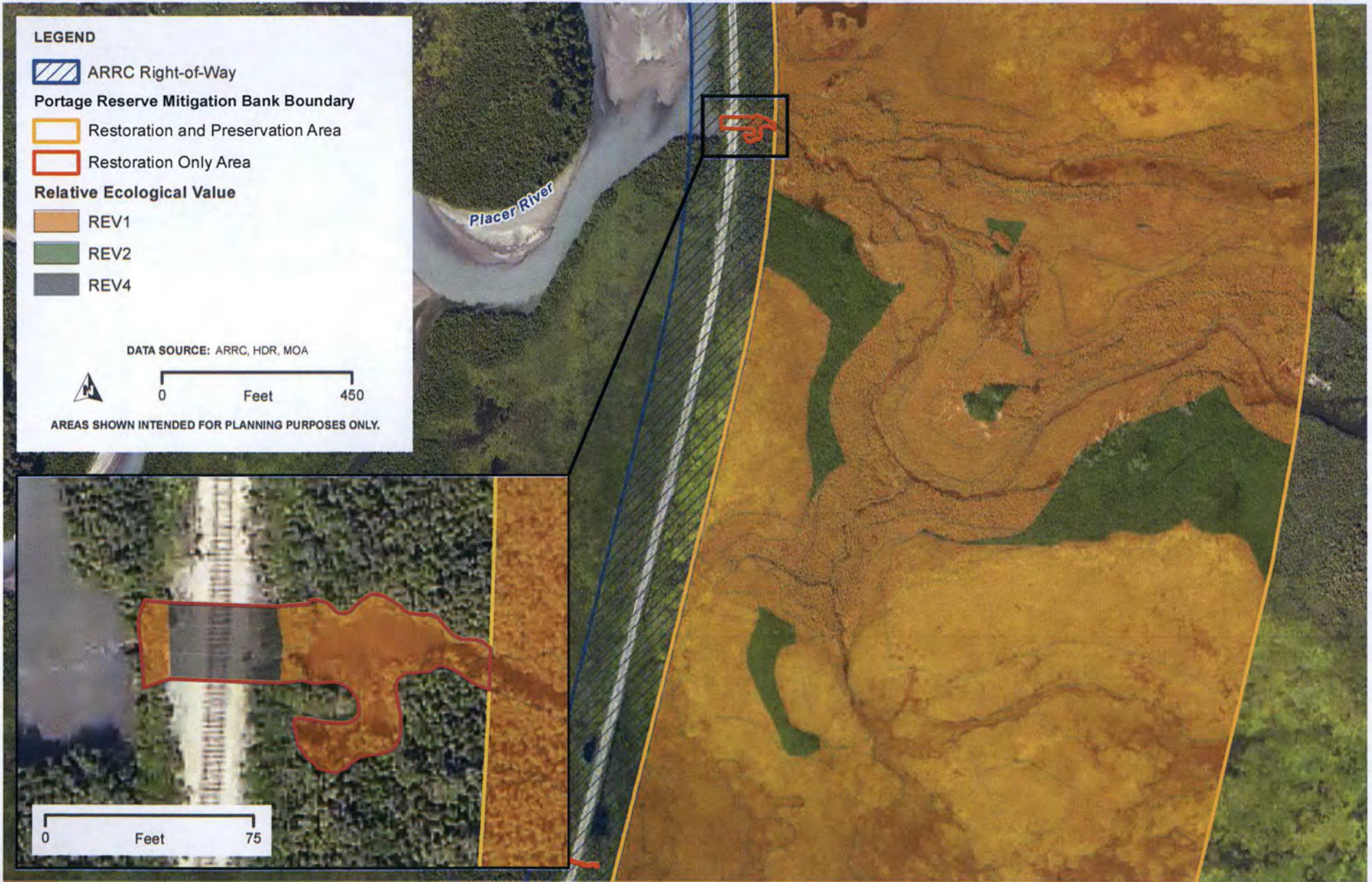
LEGEND

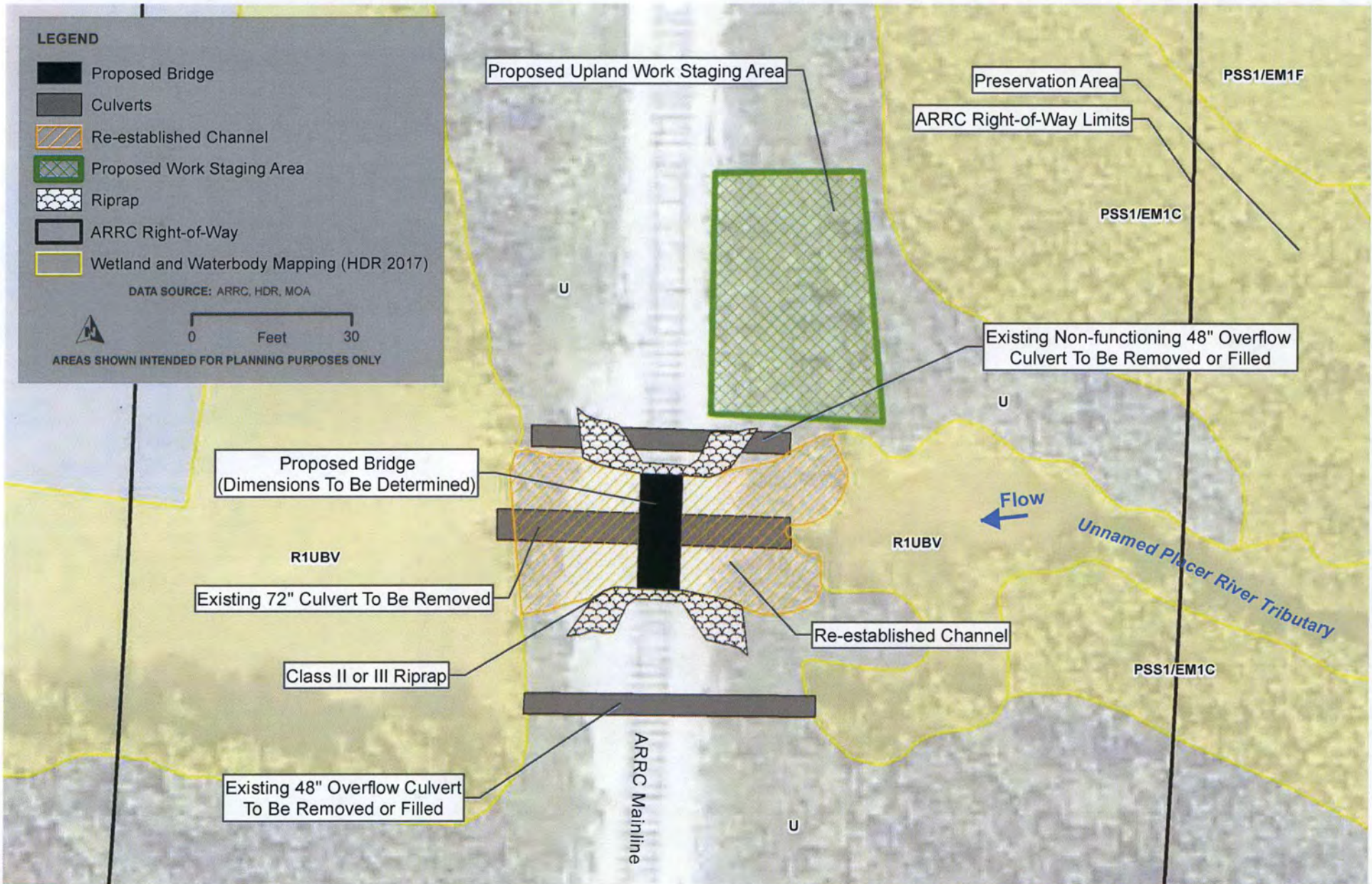
- Proposed Bridge
- Culvert - To Be Removed
- Re-established Channel
- Proposed Work Staging Area
- Riprap
- ARRC Right-of-Way
- Wetland and Waterbody Mapping (HDR 2017)

DATA SOURCE: ARRC, HDR, MOA

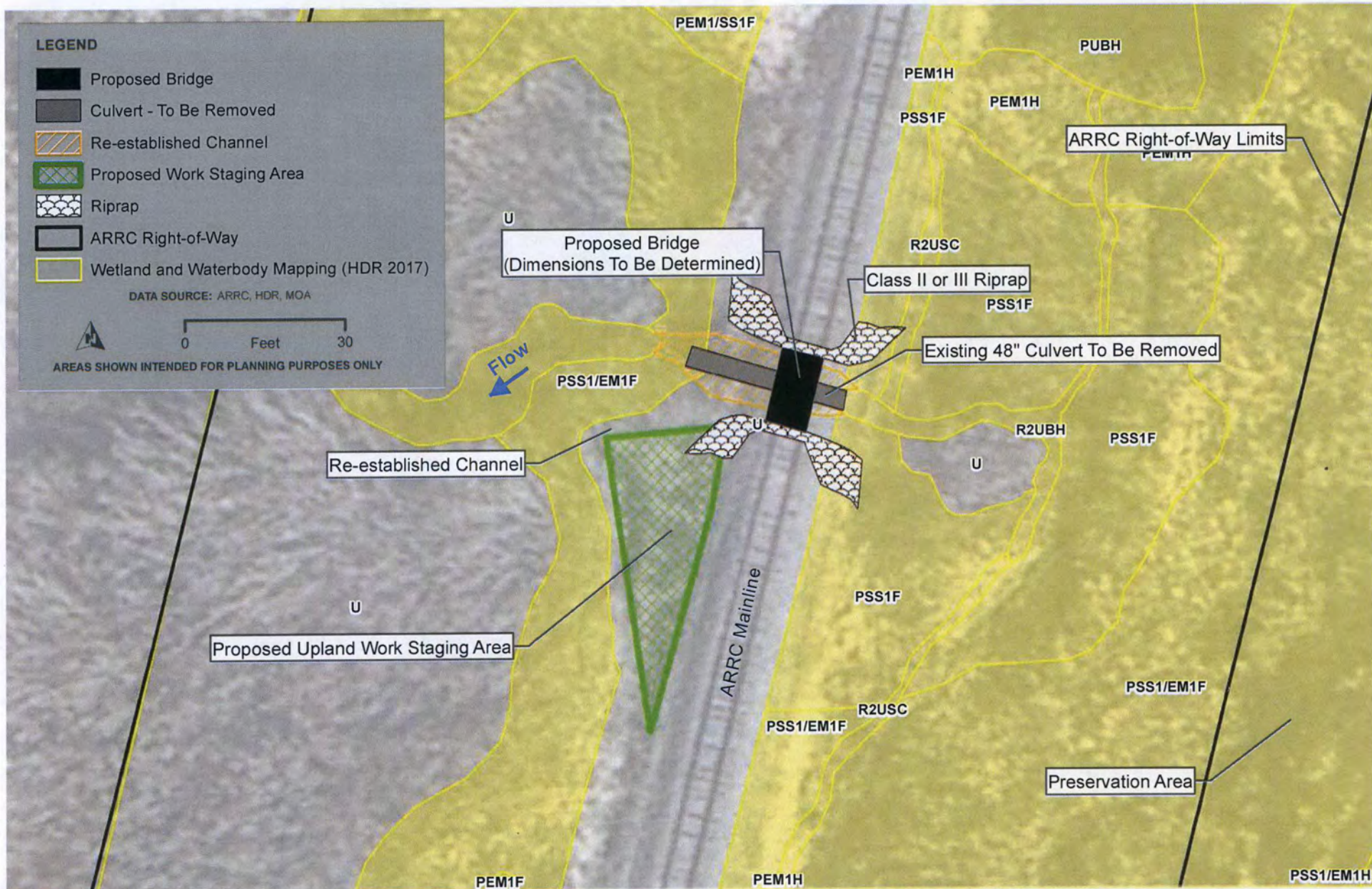


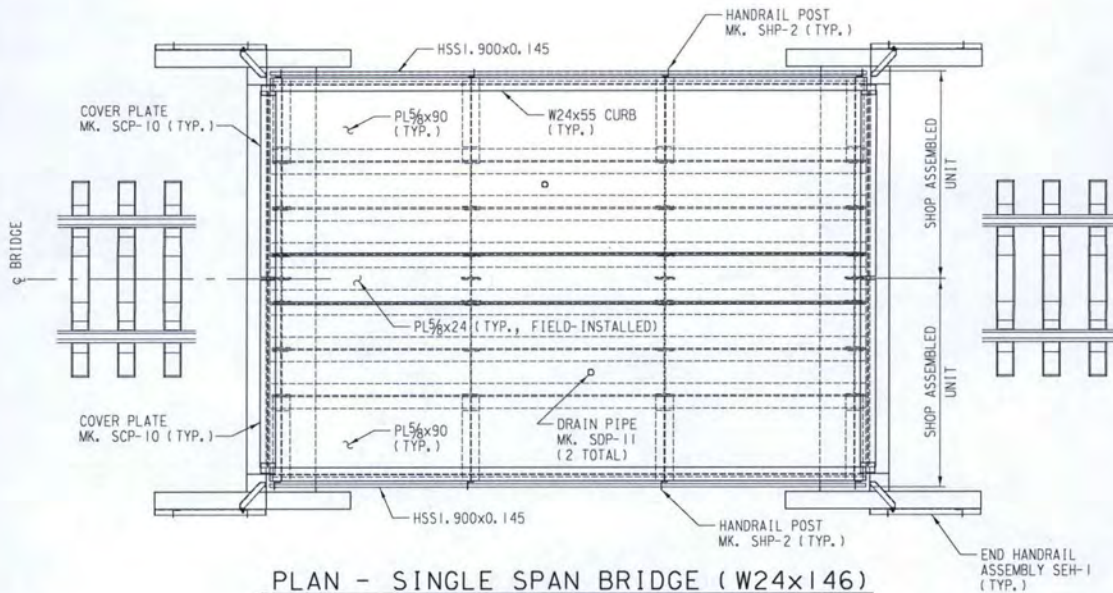
AREAS SHOWN INTENDED FOR PLANNING PURPOSES ONLY



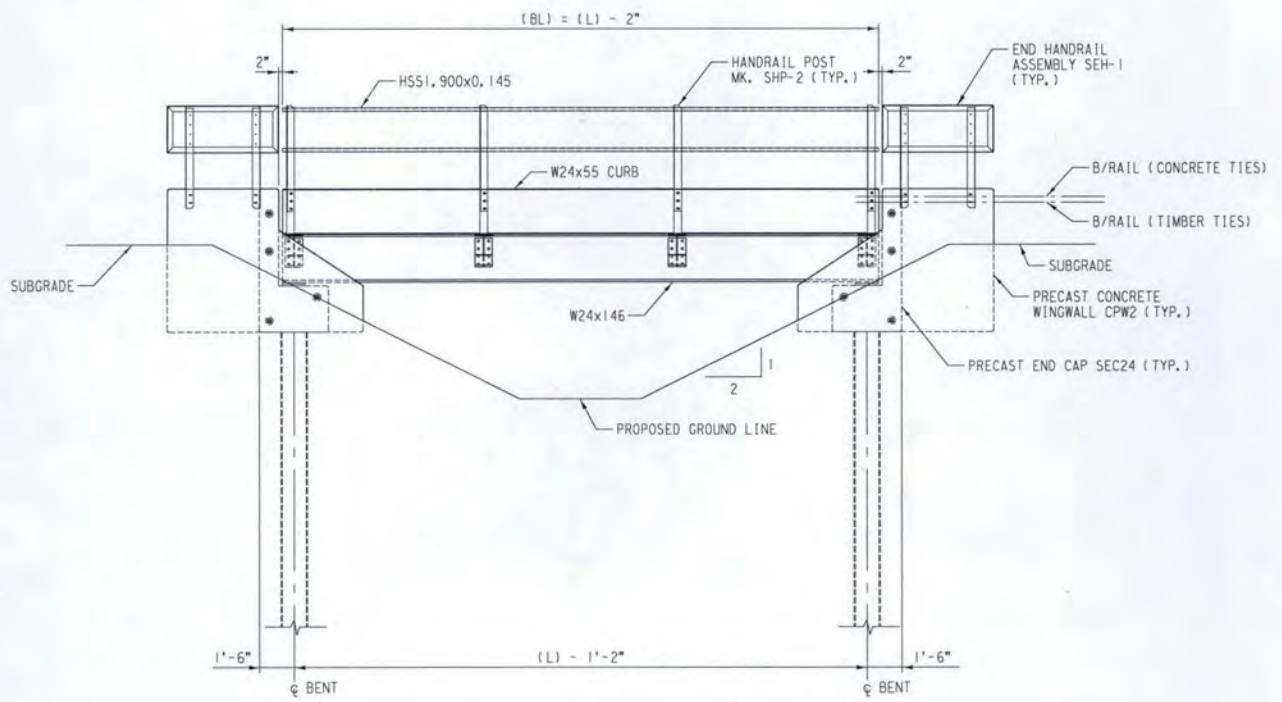




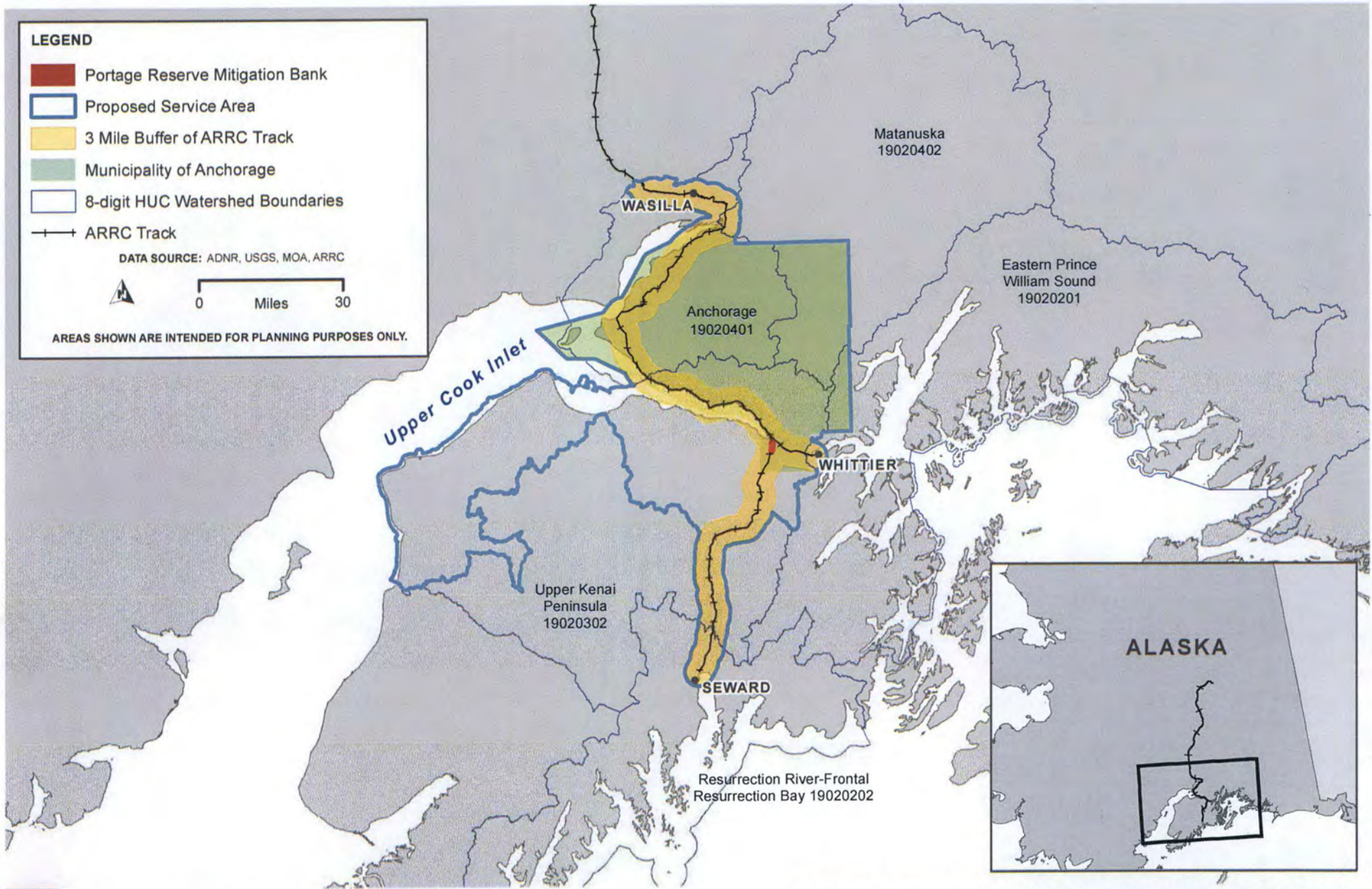


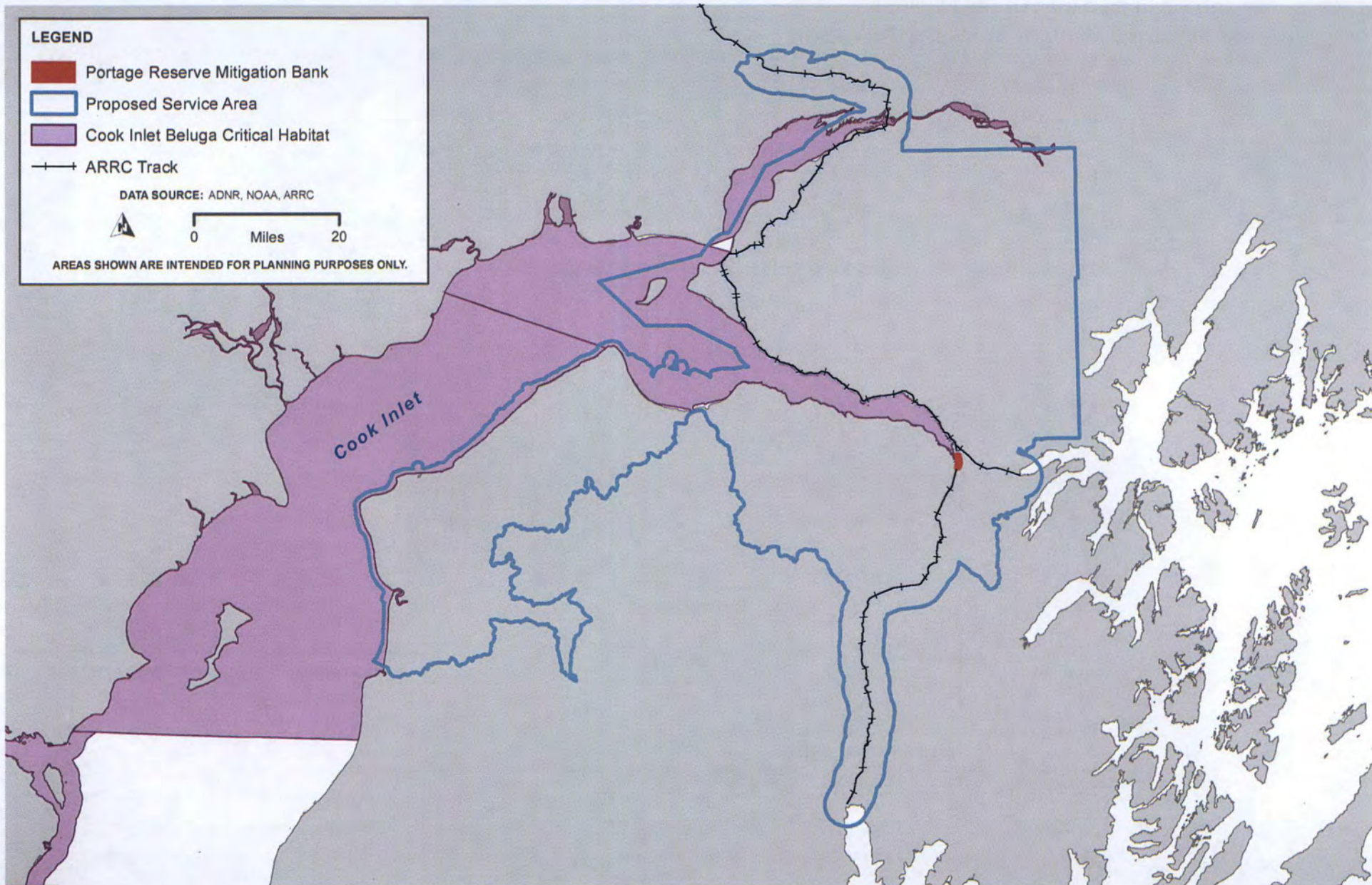


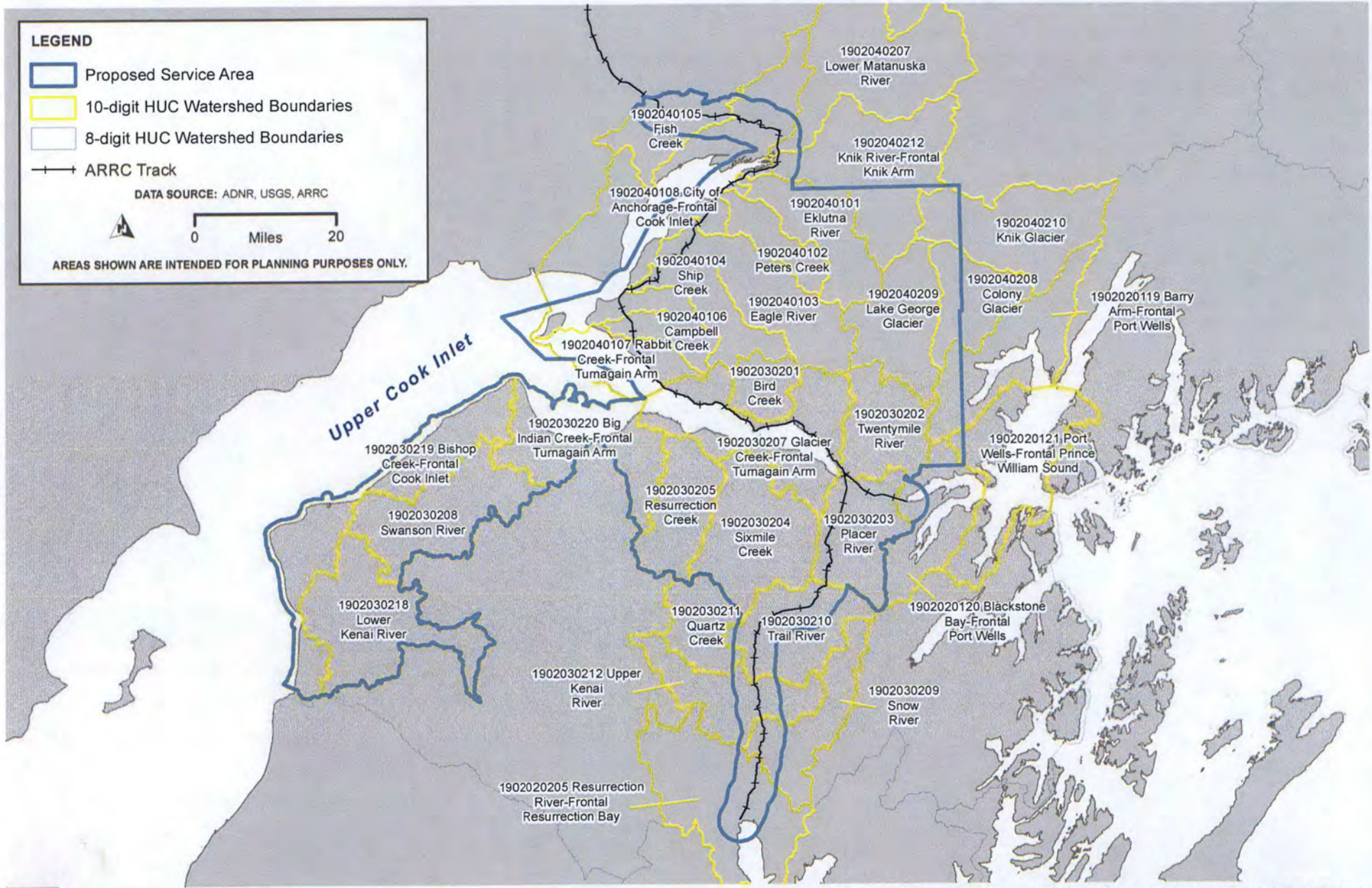
Bridge length varies between 14' and 34'



Bridge length varies between 14' and 34'







LEGEND

- Proposed Service Area
- 10-digit HUC Watershed Boundaries
- 8-digit HUC Watershed Boundaries
- + + ARRC Track








DATA SOURCE: ADNR, USGS, ARRC



0 Miles 20






AREAS SHOWN ARE INTENDED FOR PLANNING PURPOSES ONLY.

LEGEND

-  Proposed Service Area
-  ARRC Track
-  Road
-  Anadromous Stream
-  2016 - 2019 STIP Project Points
-  2016 - 2019 STIP Project Lines
-  Future ARRC and Other Projects

USACE-Permits Issued Requiring Mitigation (2013-2016)

Credits Required

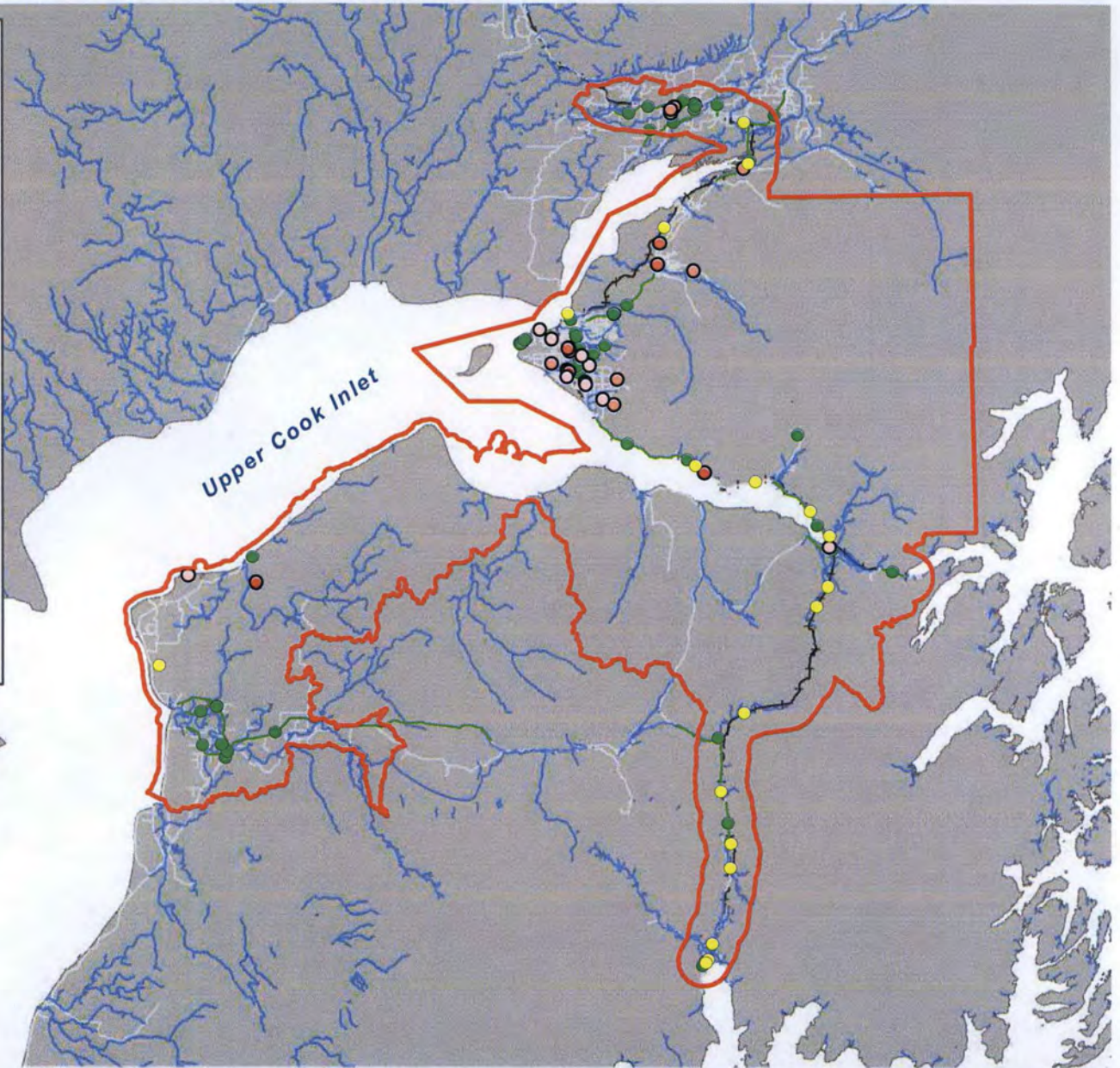
-  < 0.5
-  0.5 - 1.0
-  1.0 - 3.0
-  3.0 - 12.0
-  > 12.0

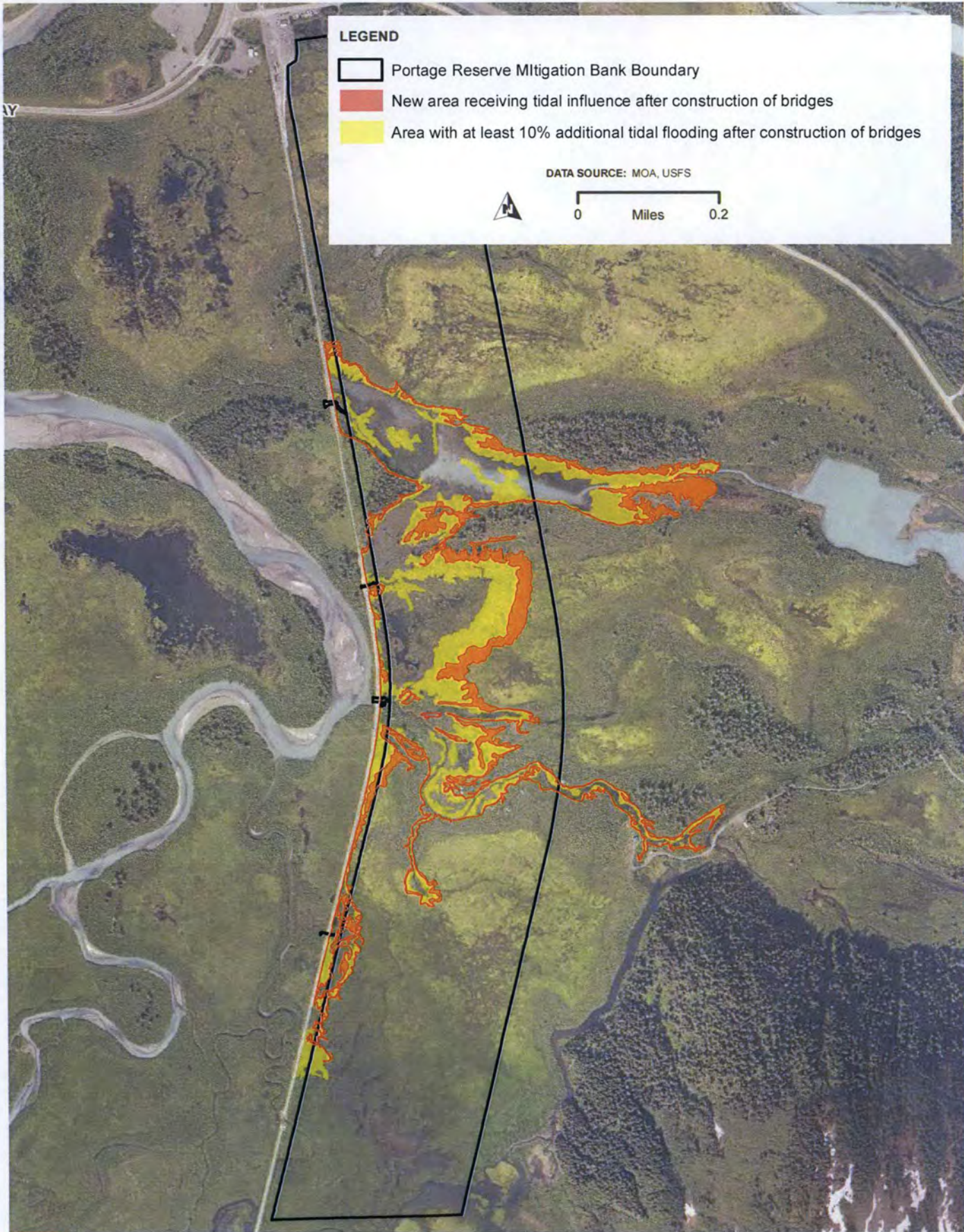
DATA SOURCE: ADNIR, USGS, ARRC

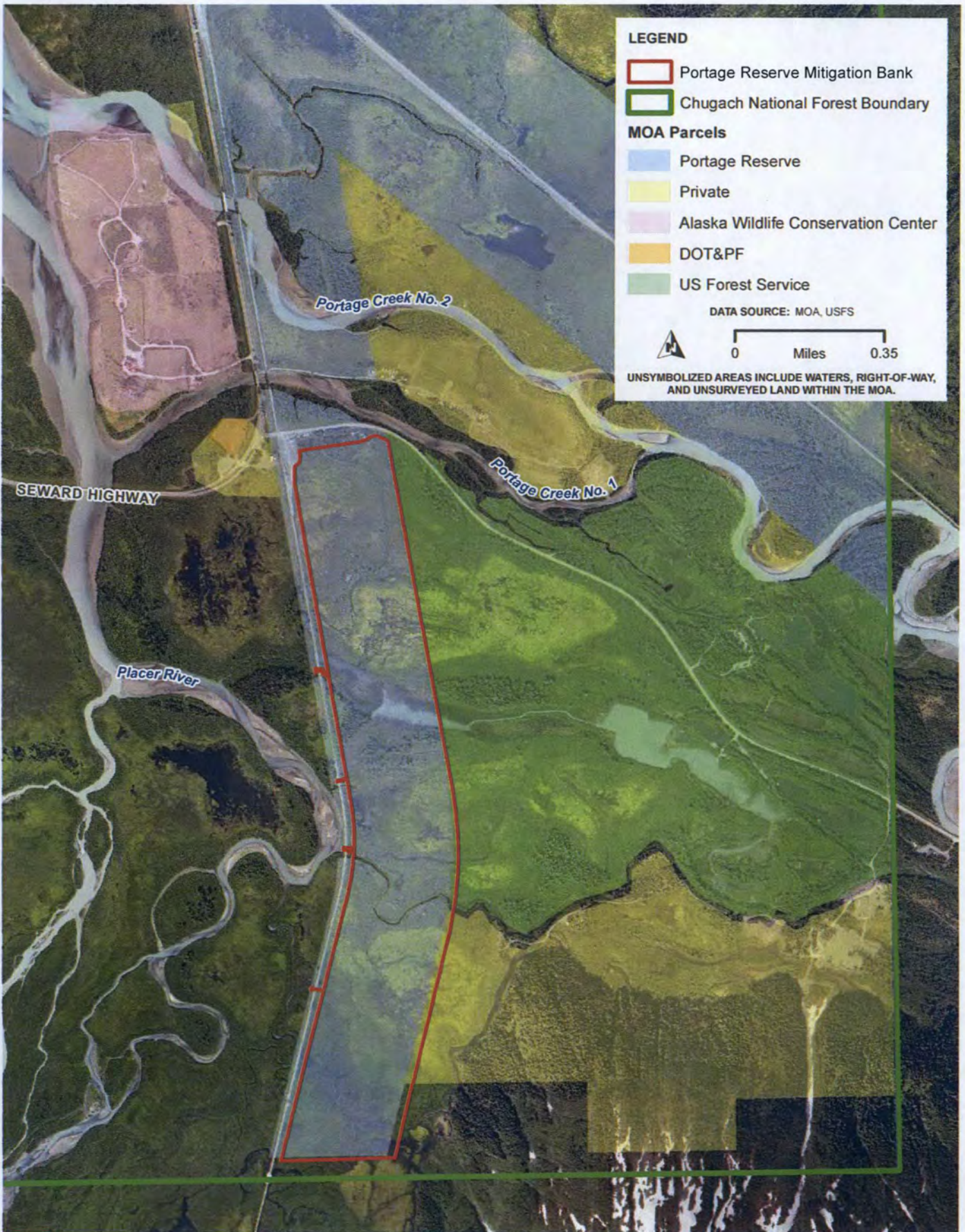


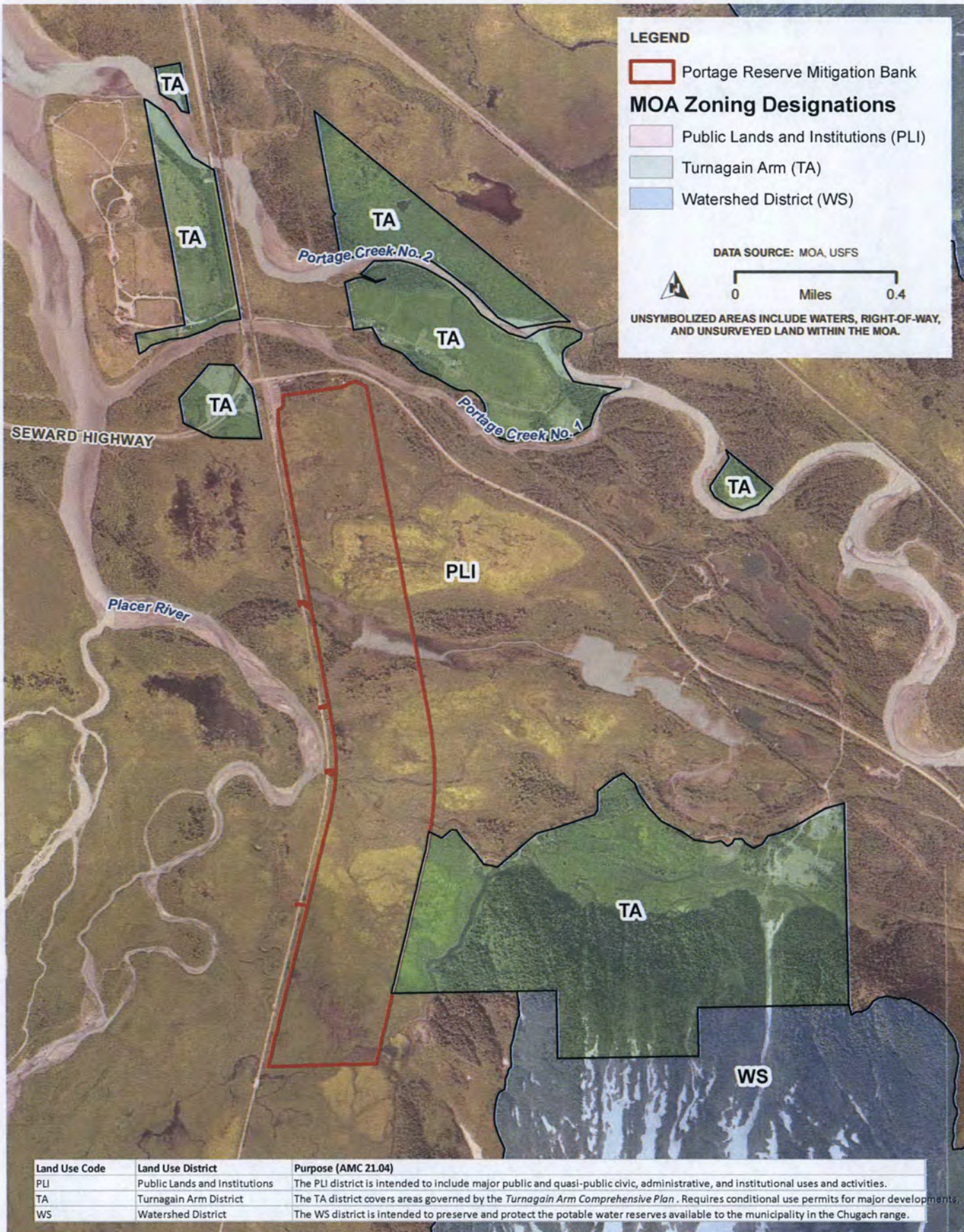
0 Miles 20

AREAS SHOWN ARE INTENDED FOR PLANNING PURPOSES ONLY.









Land Use Code	Land Use District	Purpose (AMC 21.04)
PLI	Public Lands and Institutions	The PLI district is intended to include major public and quasi-public civic, administrative, and institutional uses and activities.
TA	Turnagain Arm District	The TA district covers areas governed by the <i>Turnagain Arm Comprehensive Plan</i> . Requires conditional use permits for major developments.
WS	Watershed District	The WS district is intended to preserve and protect the potable water reserves available to the municipality in the Chugach range.