

POA# 2014-37

DEPARTMENT OF TRANSPORTATION  
FEDERAL AVIATION ADMINISTRATION

BIORKA ISLAND DOCK REPLACEMENT  
WATERBODY: SYMONDS BAY  
BIORKA ISLAND, SITKA, ALASKA

T58S, R62E, SEC 8  
COPPER RIVER MERIDIAN  
USGS QUADRANGLE PORT ALEXANDER D-5

**LOCATION AND VICINITY MAP**

AUGUST 2017

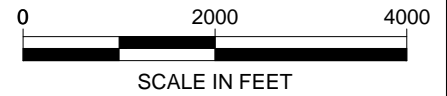
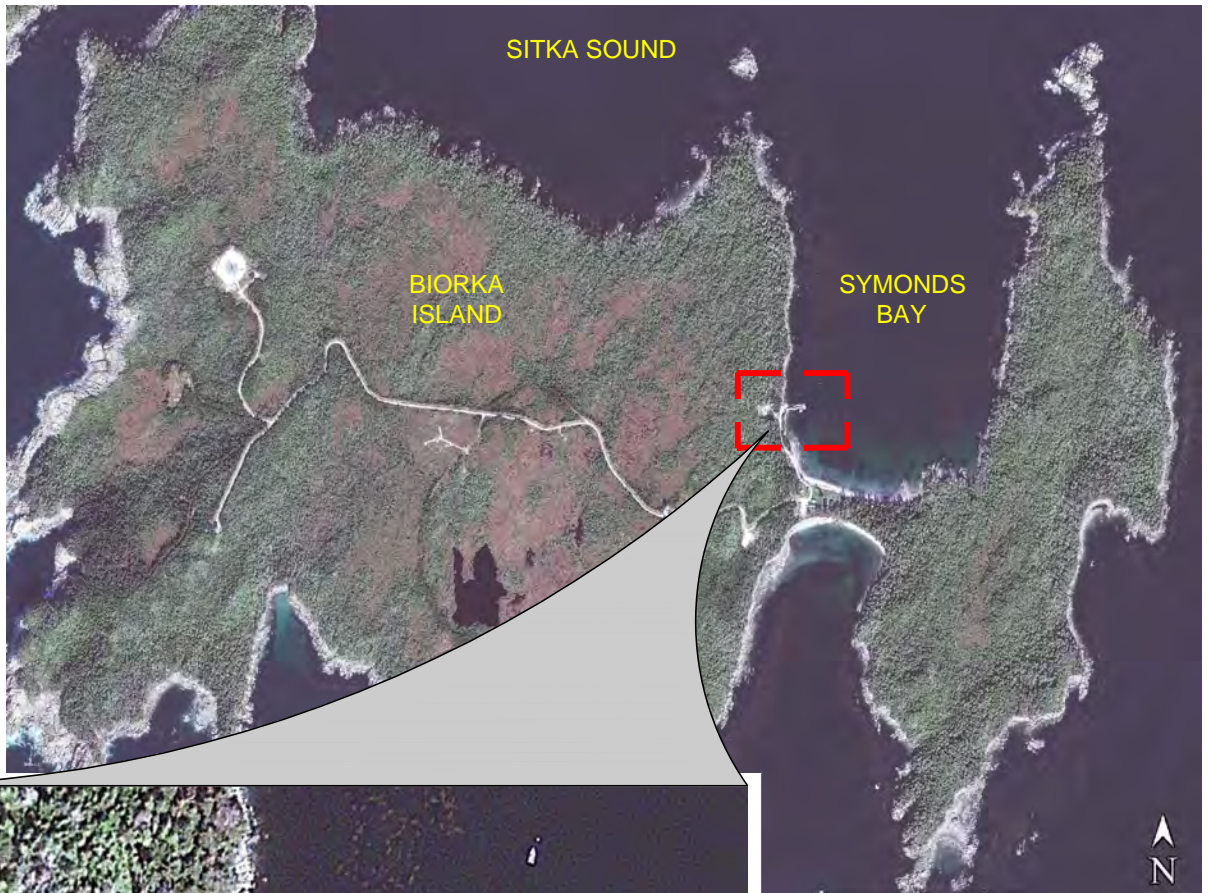
FIGURE 1 OF 7



SCALE IN MILES

Z:\project\2299.01 PTSI FAA Biorka Island Dock Replacement\Earth\Environmental\ACAD\USACE - IP\2299.01 - Figure 2.dwg

Plotted 8/16/2017 9:29 AM by Jean Cumlat



EXISTING BIORKA ISLAND DOCK



POA# 2014-37

DEPARTMENT OF TRANSPORTATION  
FEDERAL AVIATION ADMINISTRATION

BIORKA ISLAND DOCK REPLACEMENT  
WATERBODY: SYMONDS BAY  
BIORKA ISLAND, SITKA, ALASKA

T58S, R62E, SEC 8  
COPPER RIVER MERIDIAN  
USGS QUADRANGLE PORT ALEXANDER D-5

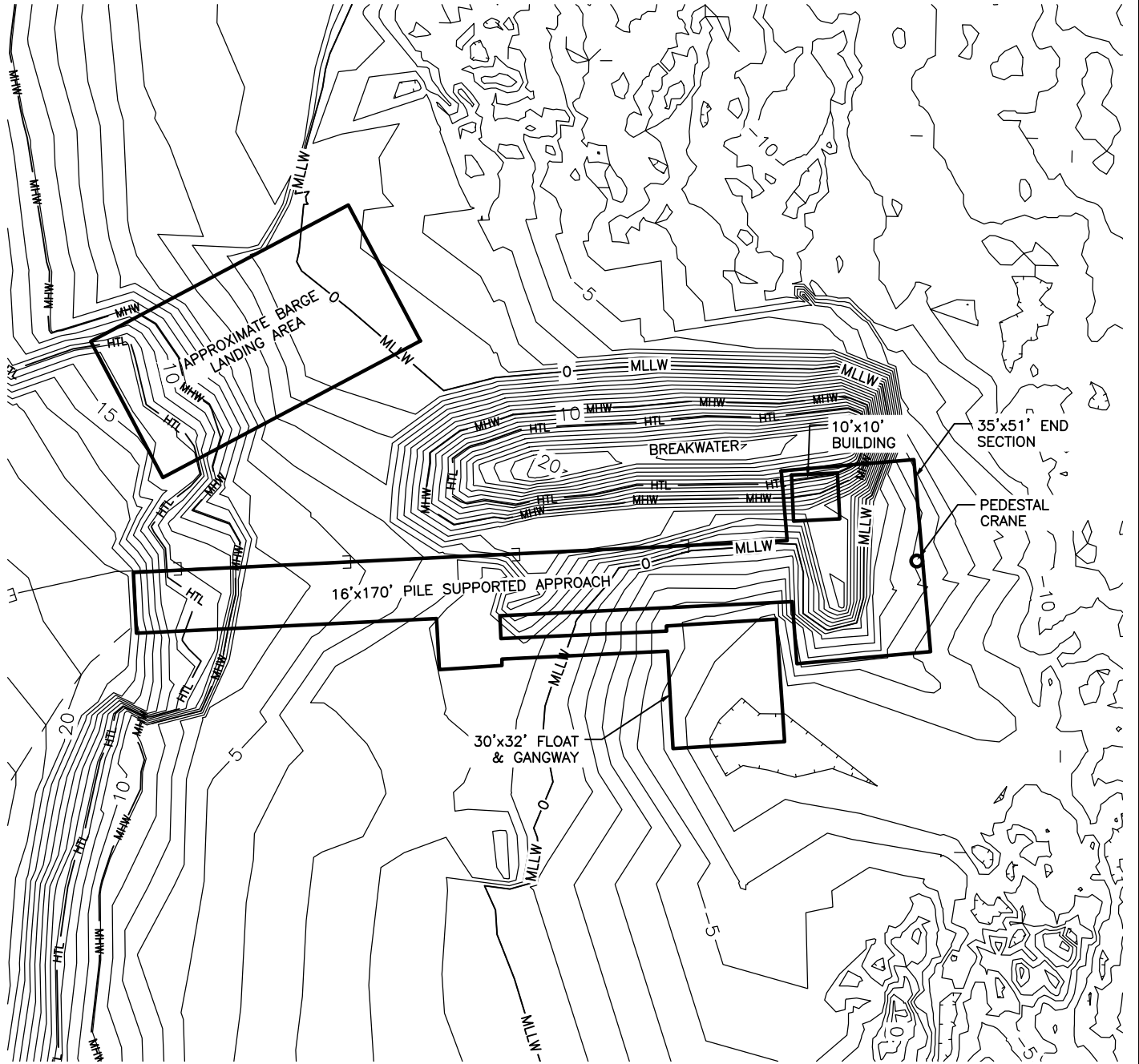
**PROJECT AREA**

AUGUST 2017

FIGURE 2 OF 7

\\rm.rmet\z\project\2299.01\_PTSI FAA Biorka Island Dock Replacement\Earth\Environmental\ACAD\USACE - P\2299.01 - Figure 3.dwg

Plotted 8/22/2017 1:58 PM by Jean Cumlat



POA# 2014-37

HTL = 12.7'  
MHW = 9.1'  
MLLW = 0'

**NOTE:**  
HTL AND MHW ELEVATIONS REFERENCED TO MEAN LOWER LOW WATER (I.E. MLLW = 0.0') BASED ON SITKA DATUM.



SCALE IN FEET

DEPARTMENT OF TRANSPORTATION  
FEDERAL AVIATION ADMINISTRATION

BIORKA ISLAND DOCK REPLACEMENT  
WATERBODY: SYMONDS BAY  
BIORKA ISLAND, SITKA, ALASKA

T58S, R62E, SEC 8  
COPPER RIVER MERIDIAN  
USGS QUADRANGLE PORT ALEXANDER D-5

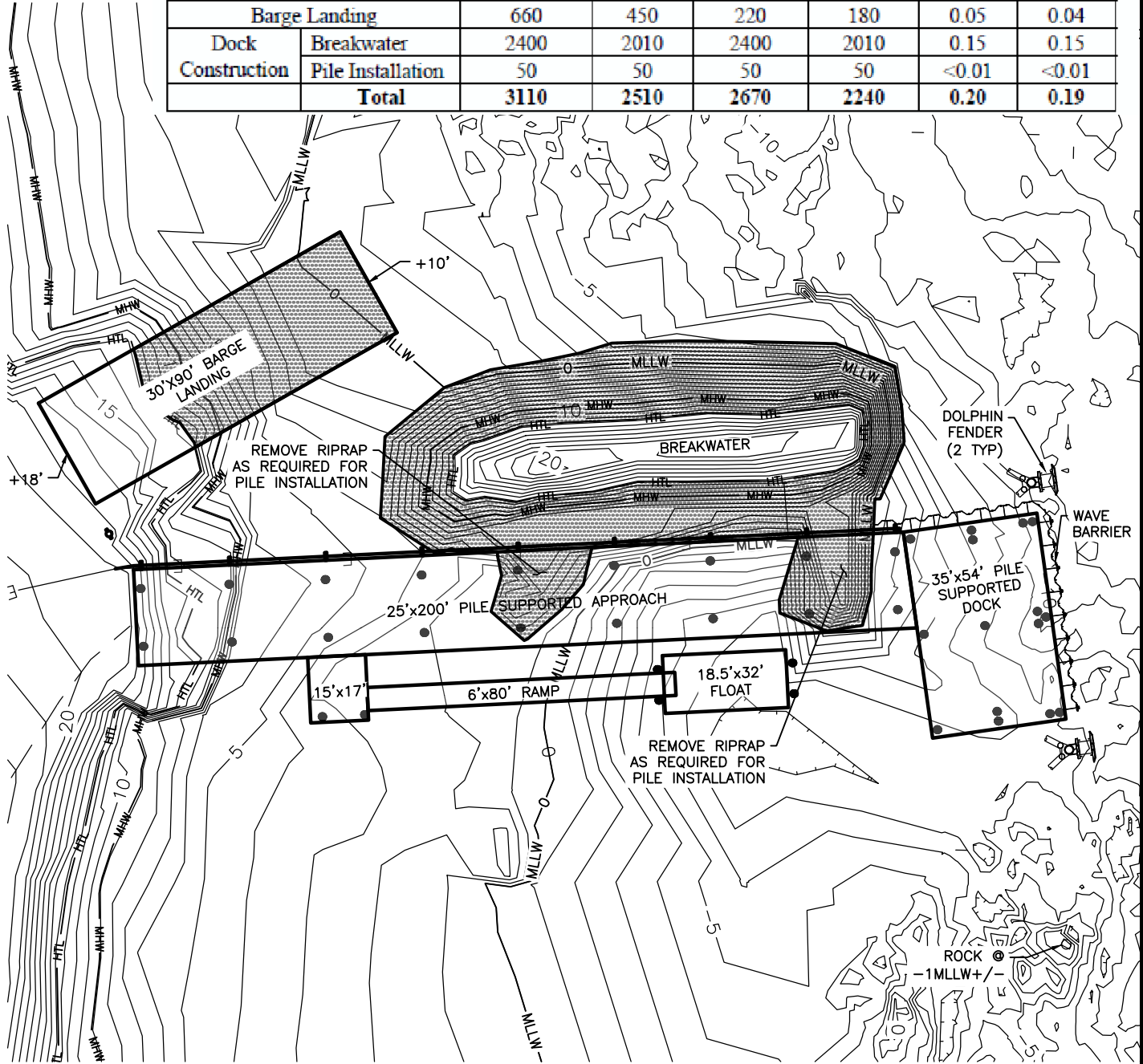
**EXISTING DOCK**

AUGUST 2017

FIGURE 3 OF 7

Jurisdictional Impact Summary Table

		Fill Volume (CY)		Dredging Volume (CY)		Impact Area (acres)	
		Below HTL	Below MHW	Below HTL	Below MHW	Below HTL	Below MHW
Barge Landing		660	450	220	180	0.05	0.04
Dock Construction	Breakwater	2400	2010	2400	2010	0.15	0.15
	Pile Installation	50	50	50	50	<0.01	<0.01
<b>Total</b>		<b>3110</b>	<b>2510</b>	<b>2670</b>	<b>2240</b>	<b>0.20</b>	<b>0.19</b>

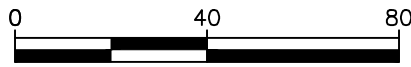


POTENTIAL IMPACT AREA

HTL = 12.7'  
MHW = 9.1'  
MLLW = 0'

**NOTES:**

1. UP TO ONE CY OF MINOR DREDGING IN THE FORM OF ROCK REMOVAL MAY BE REQUIRED FOR PILE INSTALLATION.
2. HTL AND MHW ELEVATIONS REFERENCED TO MEAN LOWER LOW WATER (I.E. MLLW = 0.0') BASED ON SITKA DATUM.



SCALE IN FEET

POA# 2014-37

DEPARTMENT OF TRANSPORTATION  
FEDERAL AVIATION ADMINISTRATION

BIORKA ISLAND DOCK REPLACEMENT  
WATERBODY: SYMONDS BAY  
BIORKA ISLAND, SITKA, ALASKA

T58S, R62E, SEC 8  
COPPER RIVER MERIDIAN  
USGS QUADRANGLE PORT ALEXANDER D-5

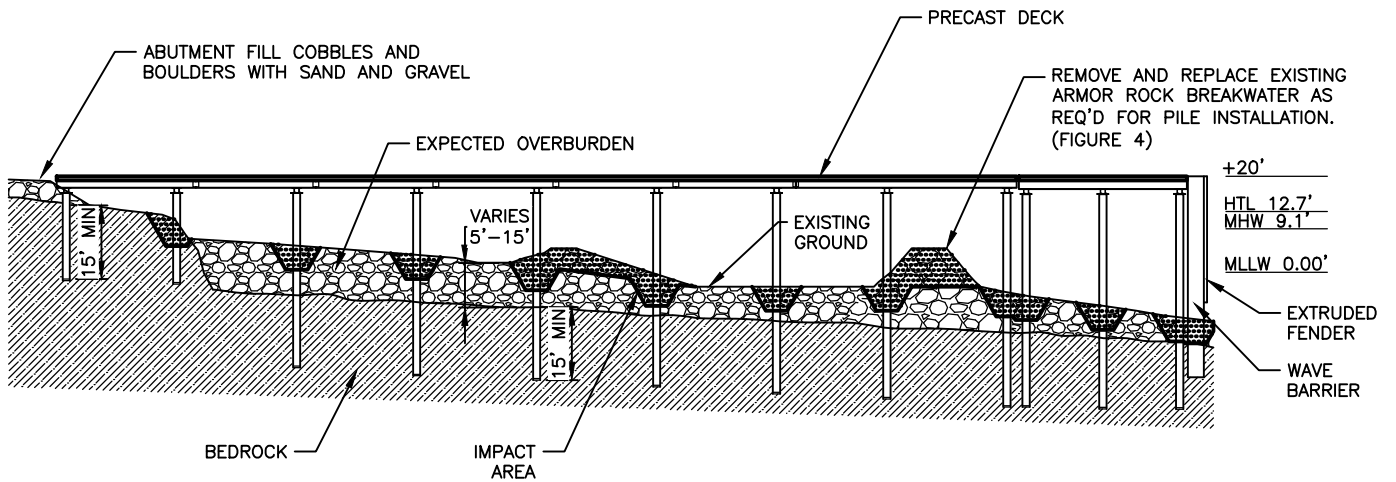
**SITE PLAN**

AUGUST 2017

FIGURE 4 OF 7

Z:\project\2299.01 PTSI FAA Biorka Island Dock Replacement\Earth\Environmental\ACAD\USACE - IP\2299.01 - Figure 5.dwg

Plotted 8/16/2017 9:30 AM by Jean Cumlat



 IMPACT AREA

**NOTES:**

1. BULLRAIL, GUARD RAILS, BOLLARDS, PEDESTAL CRANE & BUILDING NOT SHOWN.
2. UP TO ONE CY OF MINOR DREDGING IN THE FORM OF ROCK REMOVAL MAY BE REQUIRED FOR PILE INSTALLATION.
3. HTL AND MHW ELEVATIONS REFERENCED TO MEAN LOWER LOW WATER (I.E. MLLW = 0.0') BASED ON SITKA DATUM.

POA# 2014-37

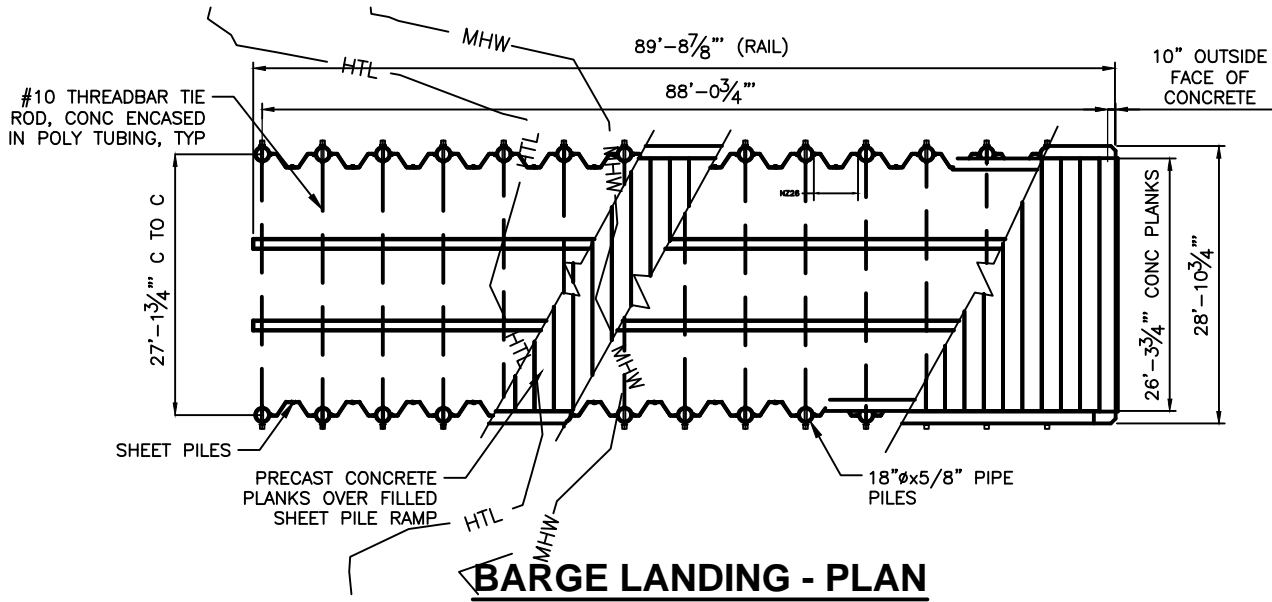
DEPARTMENT OF TRANSPORTATION  
FEDERAL AVIATION ADMINISTRATION

BIORKA ISLAND DOCK REPLACEMENT  
WATERBODY: SYMONDS BAY  
BIORKA ISLAND, SITKA, ALASKA

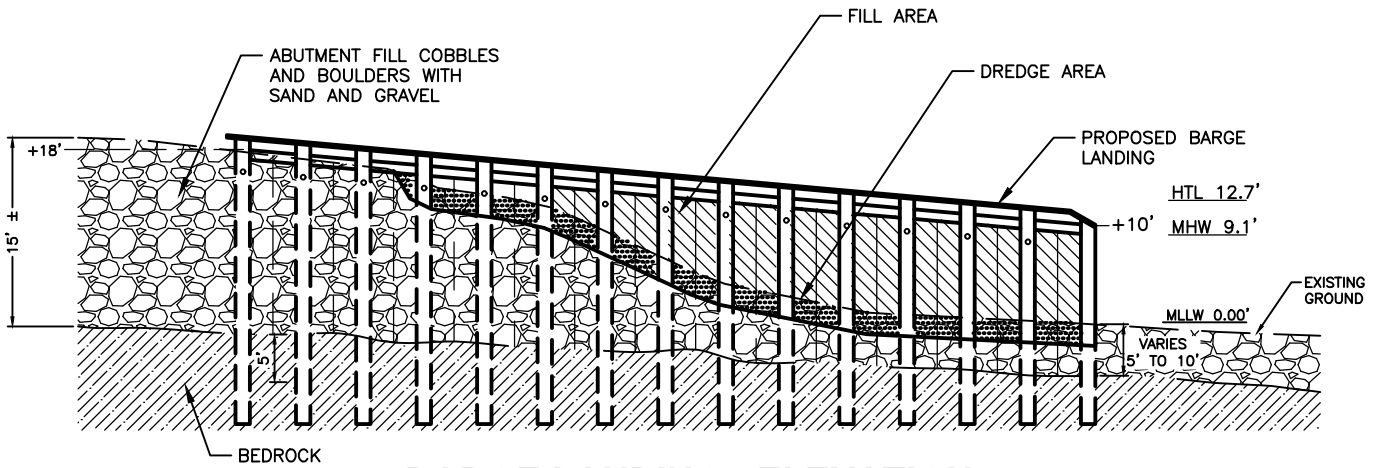
T58S, R62E, SEC 8  
COPPER RIVER MERIDIAN  
USGS QUADRANGLE PORT ALEXANDER D-5

**PROPOSED DOCK  
LONGITUDINAL SECTION VIEW**  
AUGUST 2017 FIGURE 5 OF 7

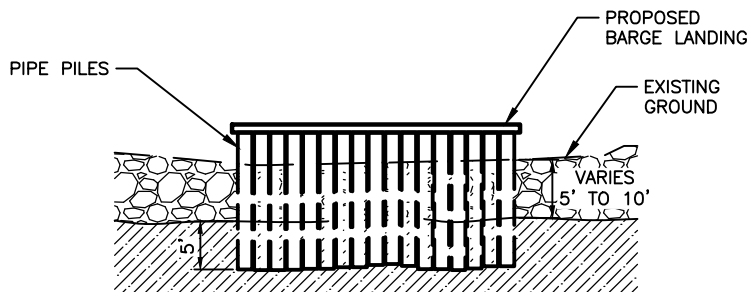
Z:\project\2299.01 PTSI FAA Biorka Island Dock Replacement\Earth\Environmental\ACAD\USACE - IP\2299.01 - Figure 6.dwg  
 Plotted 8/16/2017 9:30 AM by Jean Cumlat



**BARGE LANDING - PLAN**



**BARGE LANDING - ELEVATION**



**BARGE LANDING - END VIEW**

**NOTES:**

1. HTL AND MHW ELEVATIONS REFERENCED TO MEAN LOWER LOW WATER (I.E. MLLW = 0.0') BASED ON SITKA DATUM.
2. SEE FIGURE 4 FOR IMPACT SUMMARY.

POA# 2014-37

DEPARTMENT OF TRANSPORTATION  
 FEDERAL AVIATION ADMINISTRATION

BIORKA ISLAND DOCK REPLACEMENT  
 WATERBODY: SYMONDS BAY  
 BIORKA ISLAND, SITKA, ALASKA

T58S, R62E, SEC 8  
 COPPER RIVER MERIDIAN  
 USGS QUADRANGLE PORT ALEXANDER D-5

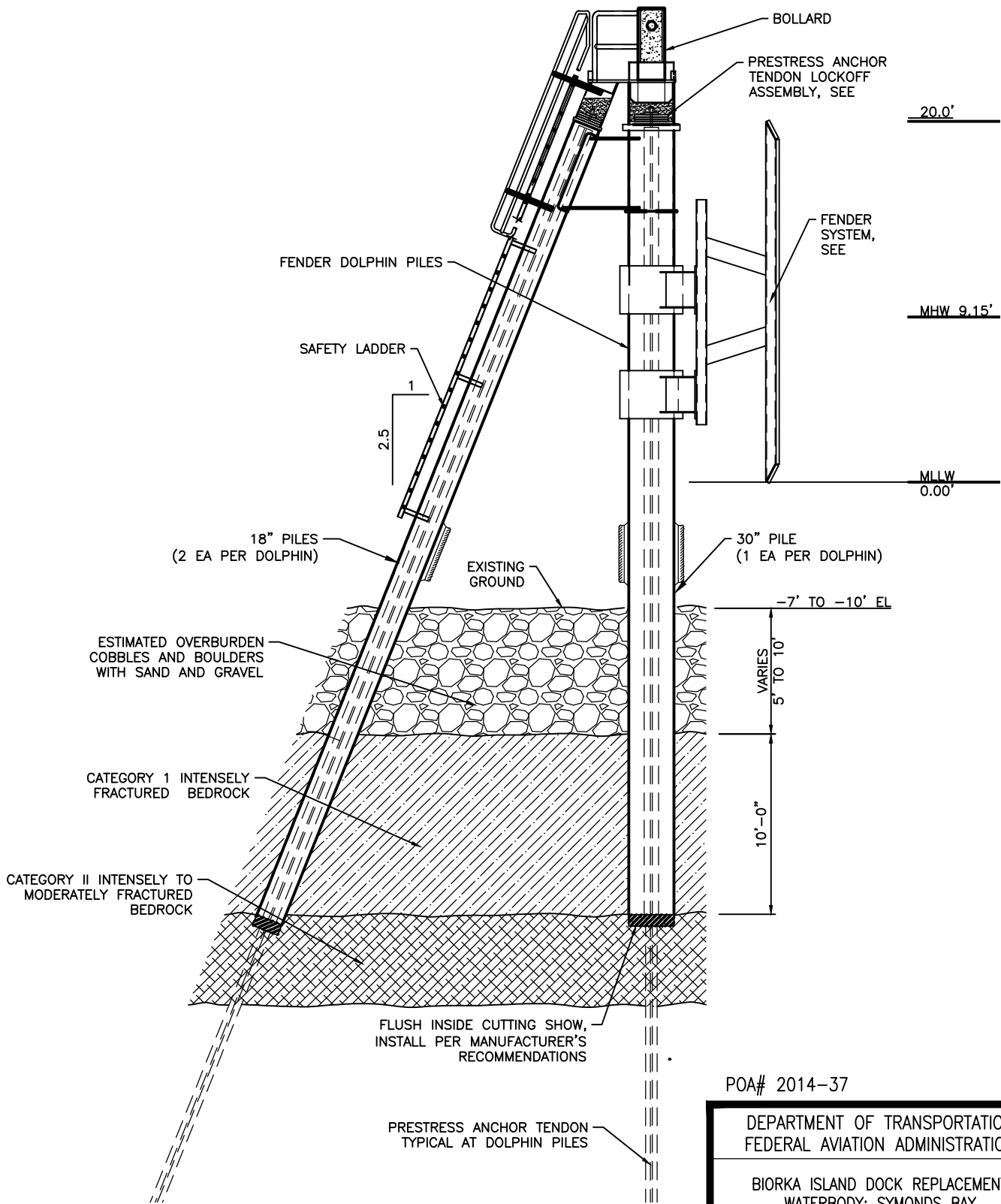
**BARGE LANDING**

AUGUST 2017

FIGURE 6 OF 7

Z:\project\2299.01 PTSI FAA Biorka Island Dock Replacement\Earth\Environmental\ACAD\USACE - IP\2299.01 - Figure 7.dwg

Plotted 8/16/2017 9:31 AM by Jean Cumlat



**NOTE:**  
HTL AND MHW ELEVATIONS REFERENCED TO MEAN LOWER LOW WATER (I.E. MLLW = 0.0') BASED ON SITKA DATUM.

POA# 2014-37

DEPARTMENT OF TRANSPORTATION  
FEDERAL AVIATION ADMINISTRATION

BIORKA ISLAND DOCK REPLACEMENT  
WATERBODY: SYMONDS BAY  
BIORKA ISLAND, SITKA, ALASKA

T58S, R62E, SEC 8  
COPPER RIVER MERIDIAN  
USGS QUADRANGLE PORT ALEXANDER D-5

**DOLPHIN SECTION**

AUGUST 2017

FIGURE 7 OF 7