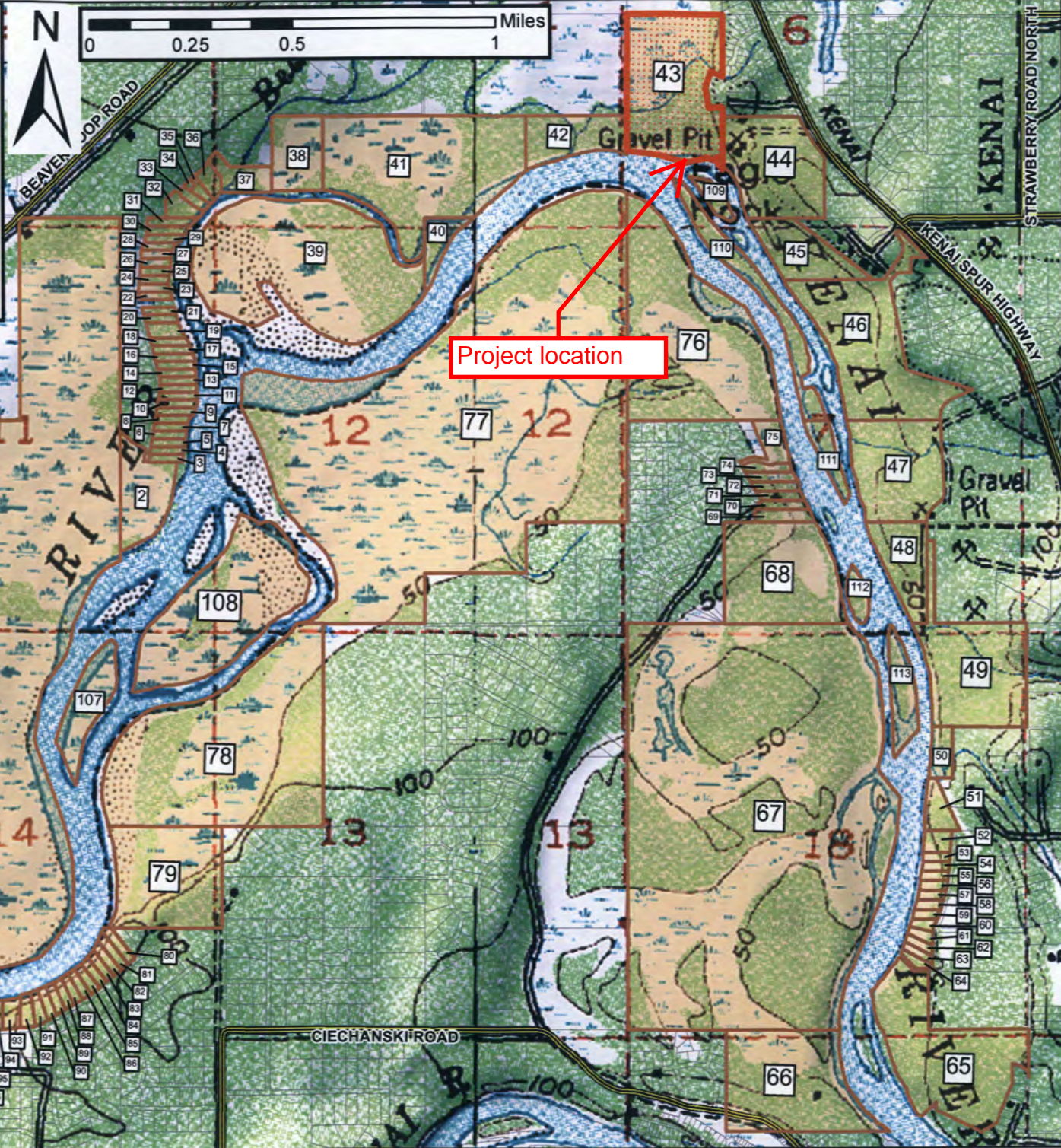
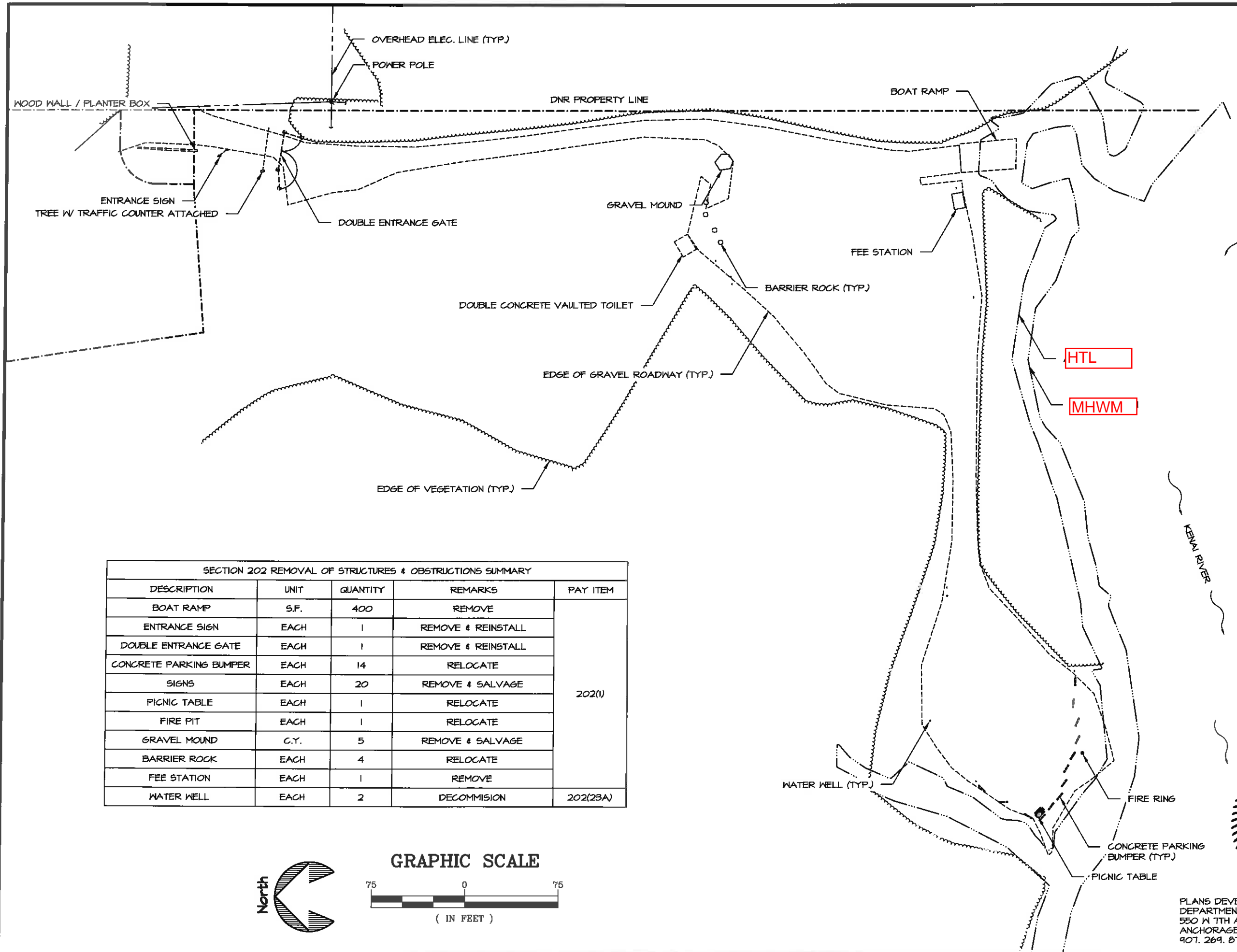
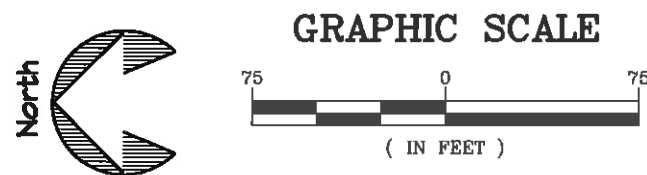


Name: ADNRP-DPDR DC
Project: Alaska State Parks Eagle Rock (KRSMA)
Location: Section 6, Township 5 North, Range 10 West, Seward Meridian, USGS QUAD Kenai C-3
Waterbody: Kenai River
Sheet: 4 of 24
Date: 6/27/2017
Property Owner Map





SECTION 202 REMOVAL OF STRUCTURES & OBSTRUCTIONS SUMMARY				
DESCRIPTION	UNIT	QUANTITY	REMARKS	PAY ITEM
BOAT RAMP	S.F.	400	REMOVE	202(1)
ENTRANCE SIGN	EACH	1	REMOVE & REINSTALL	
DOUBLE ENTRANCE GATE	EACH	1	REMOVE & REINSTALL	
CONCRETE PARKING BUMPER	EACH	14	RELOCATE	
SIGNS	EACH	20	REMOVE & SALVAGE	
PICNIC TABLE	EACH	1	RELOCATE	
FIRE PIT	EACH	1	RELOCATE	
GRAVEL MOUND	C.Y.	5	REMOVE & SALVAGE	
BARRIER ROCK	EACH	4	RELOCATE	
FEE STATION	EACH	1	REMOVE	202(23A)
WATER WELL	EACH	2	DECOMMISSION	



PLANS DEVELOPED BY:
DEPARTMENT OF NATURAL RESOURCES
550 W 7TH AVE SUITE 1340
ANCHORAGE, AK 99501
907. 269. 8731

STATE OF ALASKA DEPARTMENT OF NATURAL RESOURCES

EAGLE ROCK KRSMA

FACILITY IMPROVEMENTS

PROJECT NO. 78036-3

EXISTING CONDITIONS & REMOVAL OF STRUCTURES & OBSTRUCTIONS SUMMARY

ALASKA STATE PARKS

PREPARED: EAT

DRAWN: EAT

REVIEWED: JS6

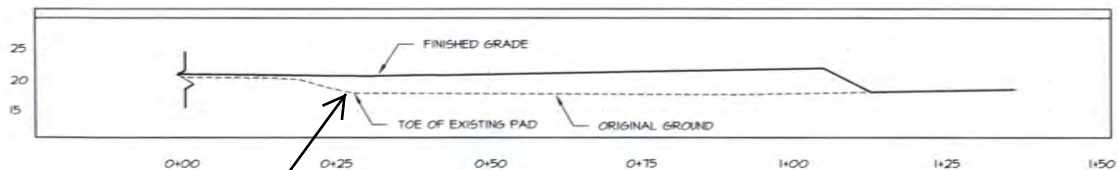
DATE: 06/02/2017

SHEET

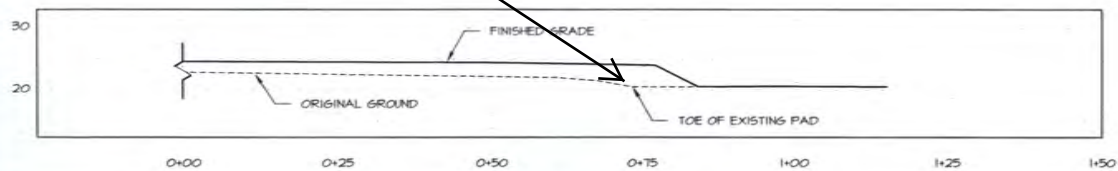
5

OF 30 SHEETS

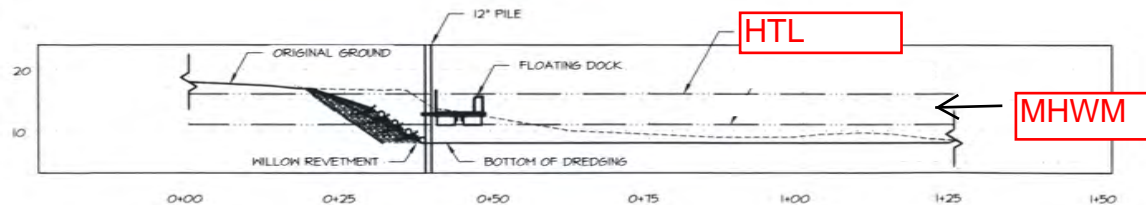
POA-1981-376, Kenai River Sheet 3 of 18 July 3, 2017



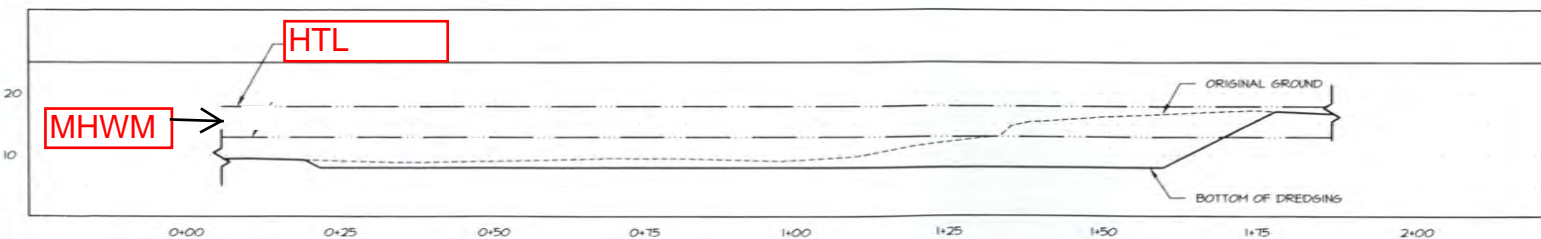
① CAMP HOST
② CROSS SECTION



② PARKING LOT
② CROSS SECTION



③ DREDGING
② CROSS SECTION



④ DREDGING
② CROSS SECTION



PLANS DEVELOPED BY:
DEPARTMENT OF NATURAL RESOURCES
550 N 7TH AVE SUITE 1340
ANCHORAGE, AK 99501
907. 269. 8131

STATE OF ALASKA DEPARTMENT OF NATURAL RESOURCES

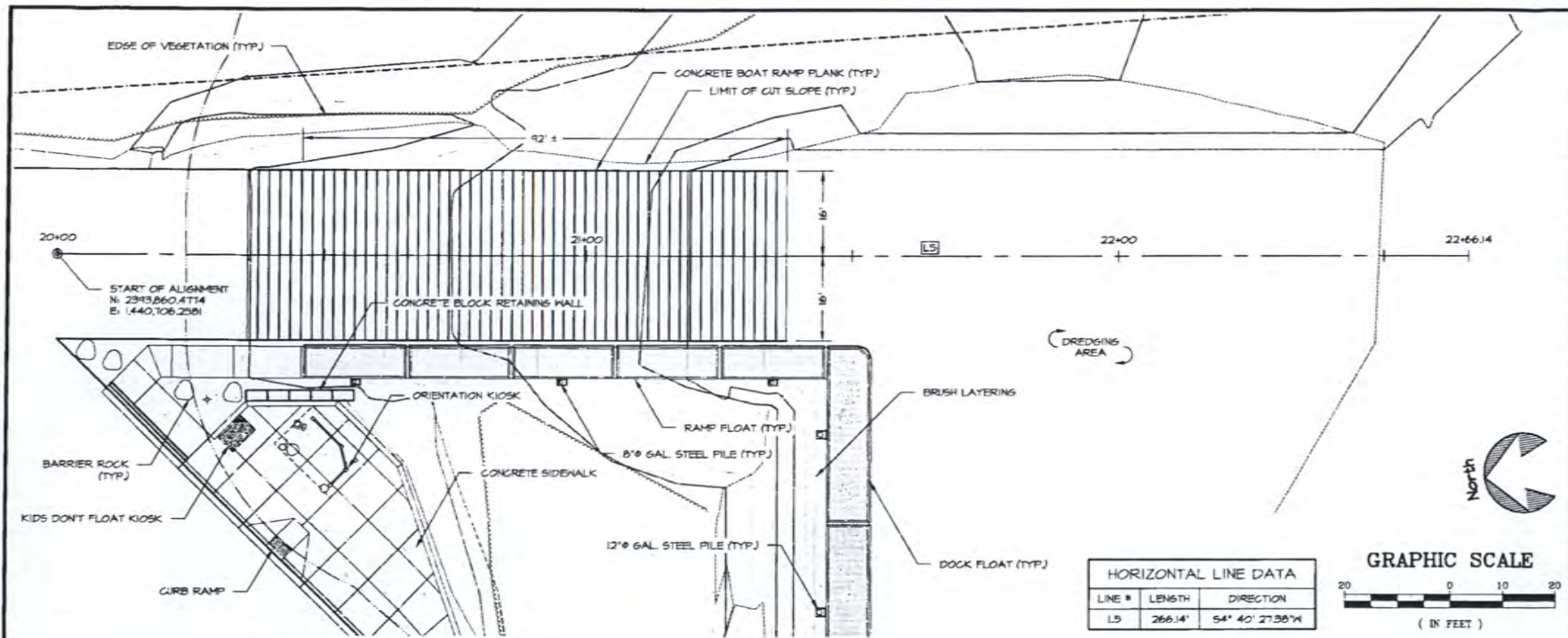
FILL & DREDGING
CROSS SECTIONS

EAGLE ROCK KRMA
FACILITY IMPROVEMENTS
PROJECT NO. 78036-B

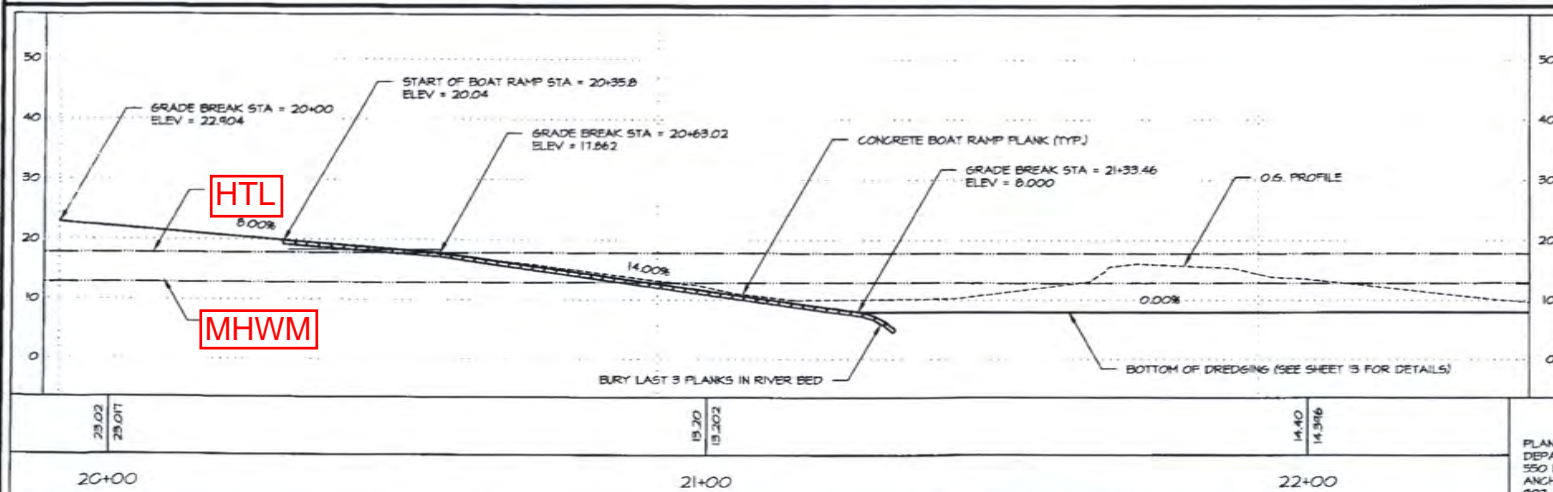


PREPARED: EAT
DRAWN: EAT
REVIEWED: JSG
DATE: 06/04/2017

SHEET
9
OF 24 SHEETS



HORIZONTAL LINE DATA		
LINE #	LENGTH	DIRECTION
L5	266.14'	S4° 40' 27.38"W



STATE OF ALASKA DEPARTMENT OF NATURAL RESOURCES

EAGLE ROCK KRMA
FACILITY IMPROVEMENTS
PROJECT NO. 78056-5

BOAT RAMP

PREPARED BY: EAT
DRAWN BY: EAT
REVIEWED BY: JSC
DATE: 06/04/2017
SHEET
10
OF 24 SHEETS

PLANS DEVELOPED BY:
DEPARTMENT OF NATURAL RESOURCES
550 W 11TH AVE SUITE 1340
ANCHORAGE, AK 99501
907.269.8791



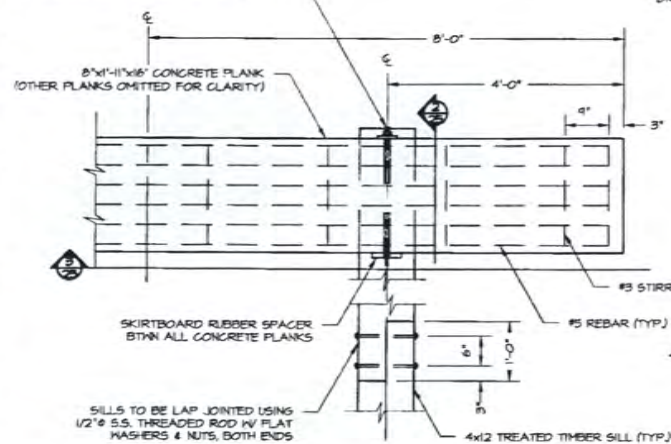
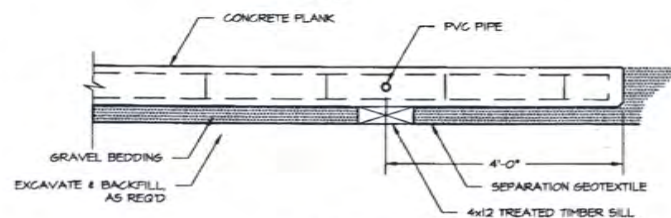
PREPARED BY: EAT
DRAWN BY: EAT
REVIEWED BY: J56
DATE: 06/09/2017

SHEET

11

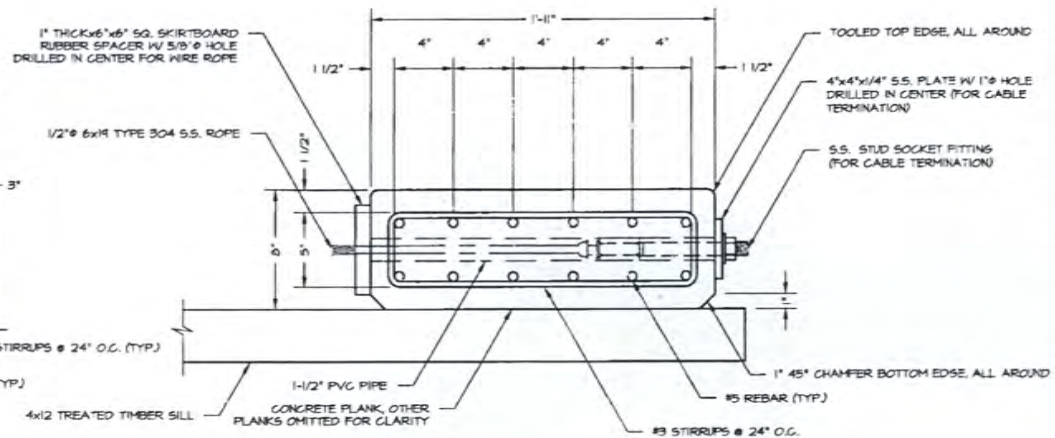
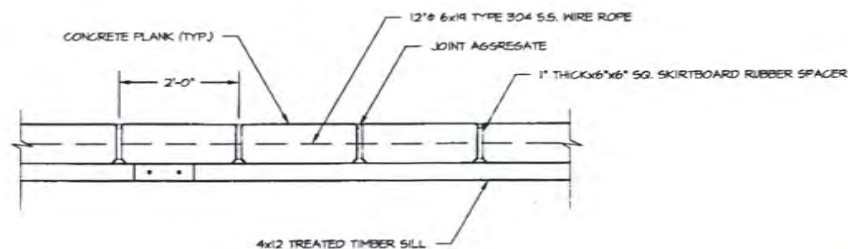
OF 24 SHEETS

CABLE TERMINATING HARDWARE FOR FIRST
& LAST CONCRETE PLANK SEE DETAIL 2/4

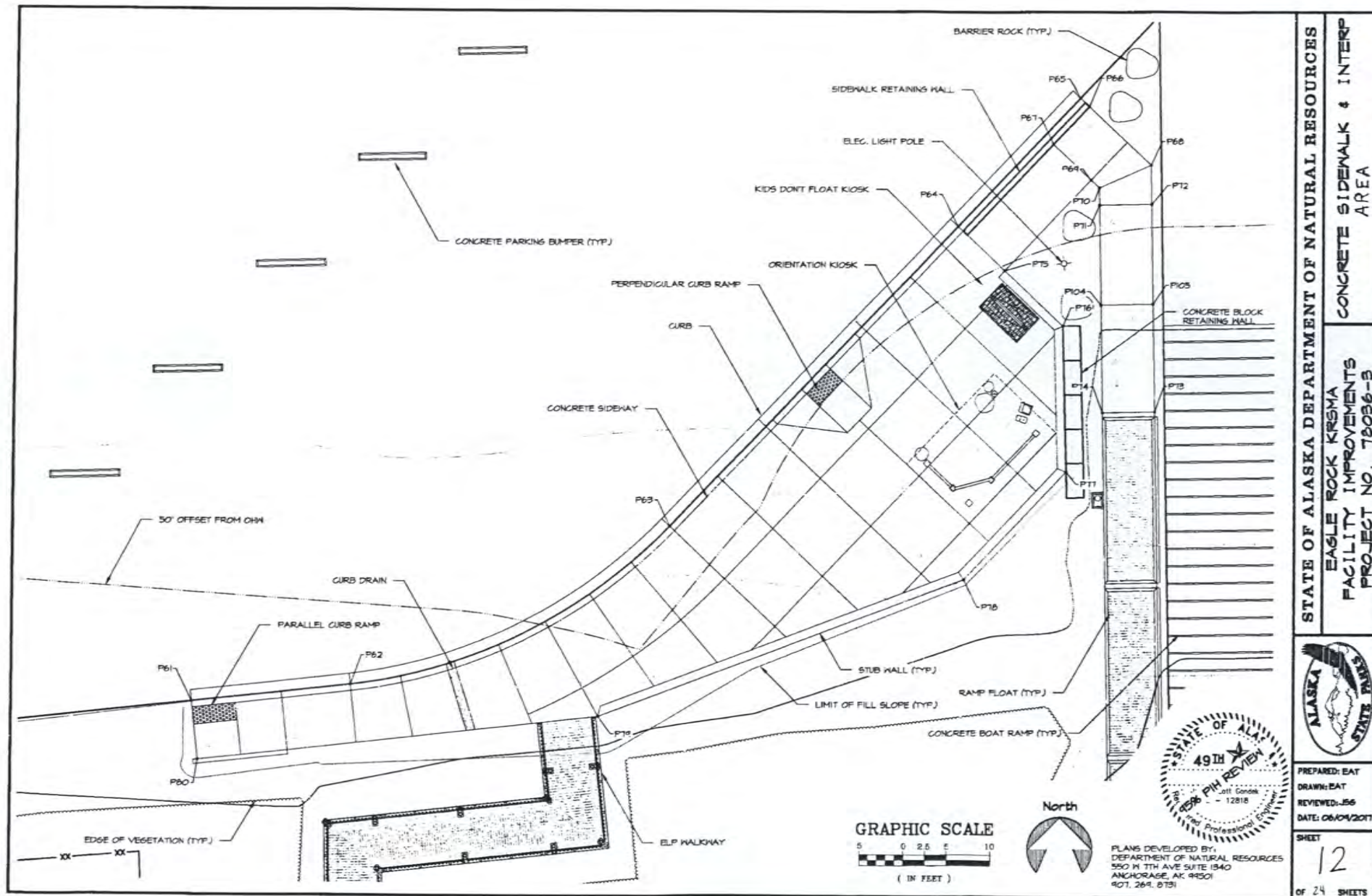
1 PLAN
253 SECTION
25

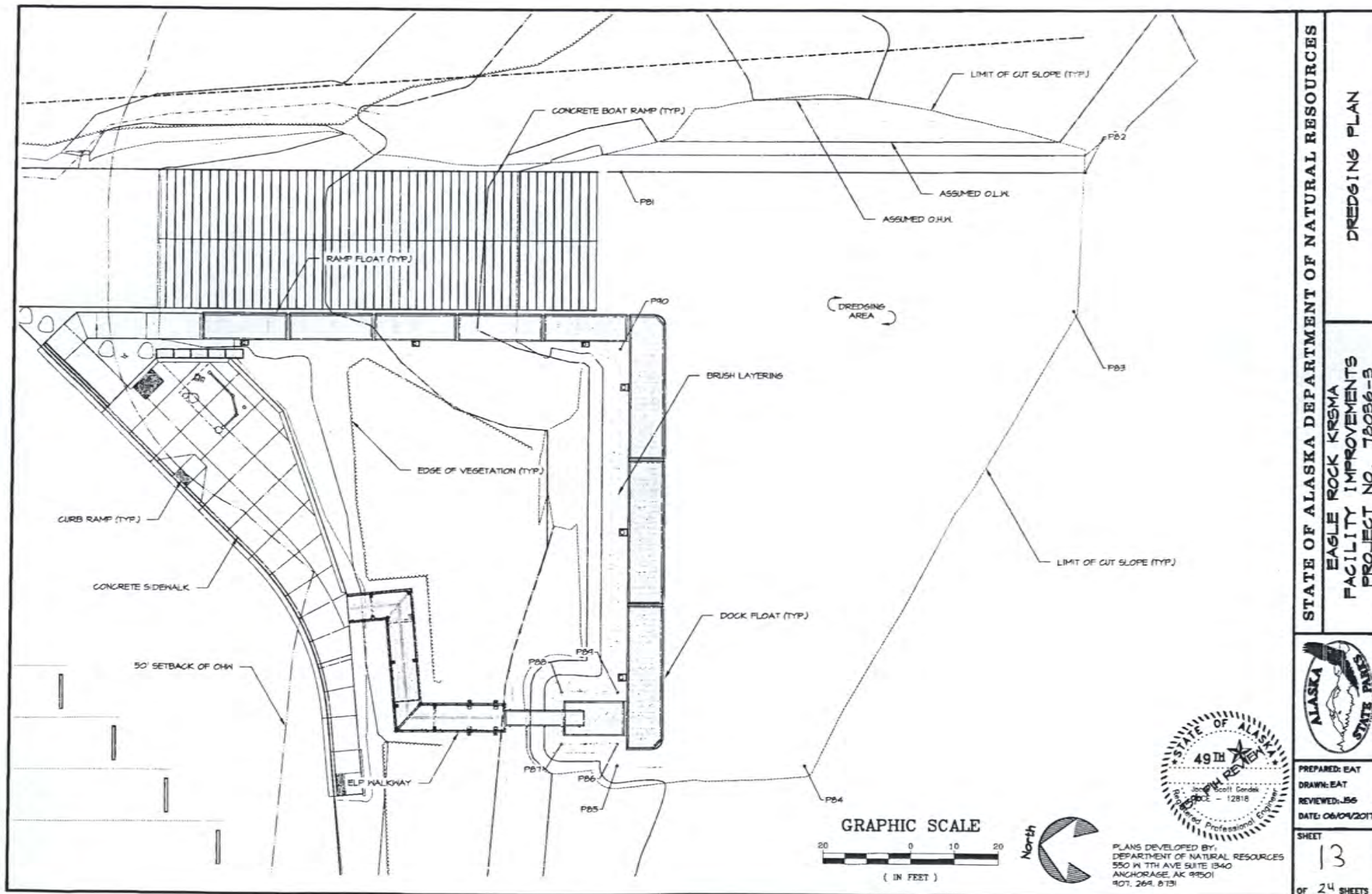
NOTES:

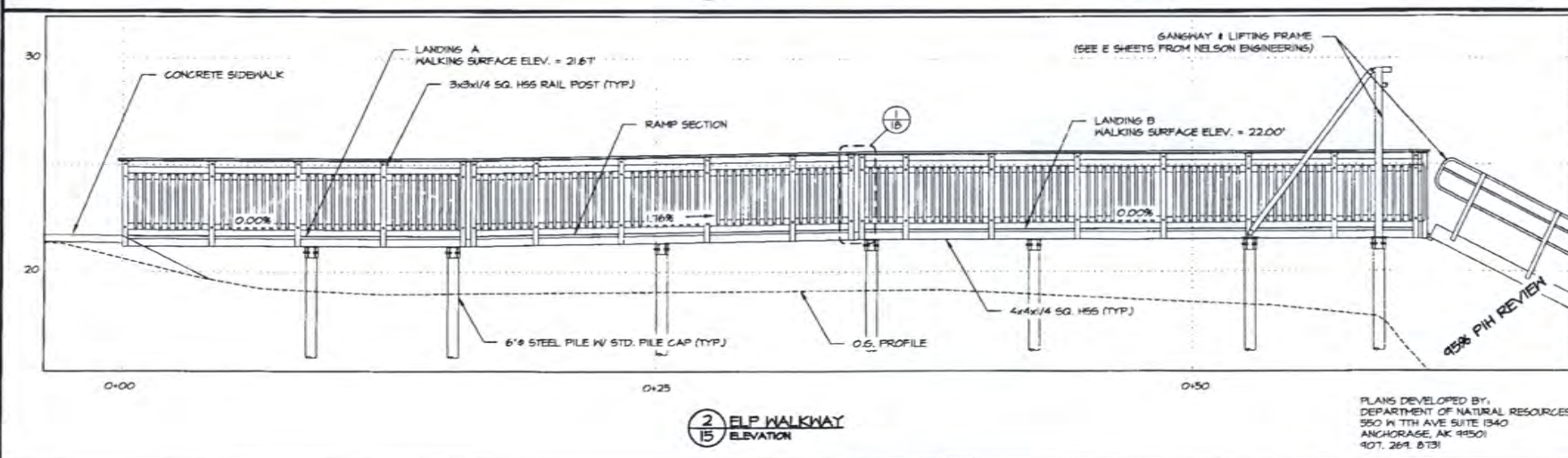
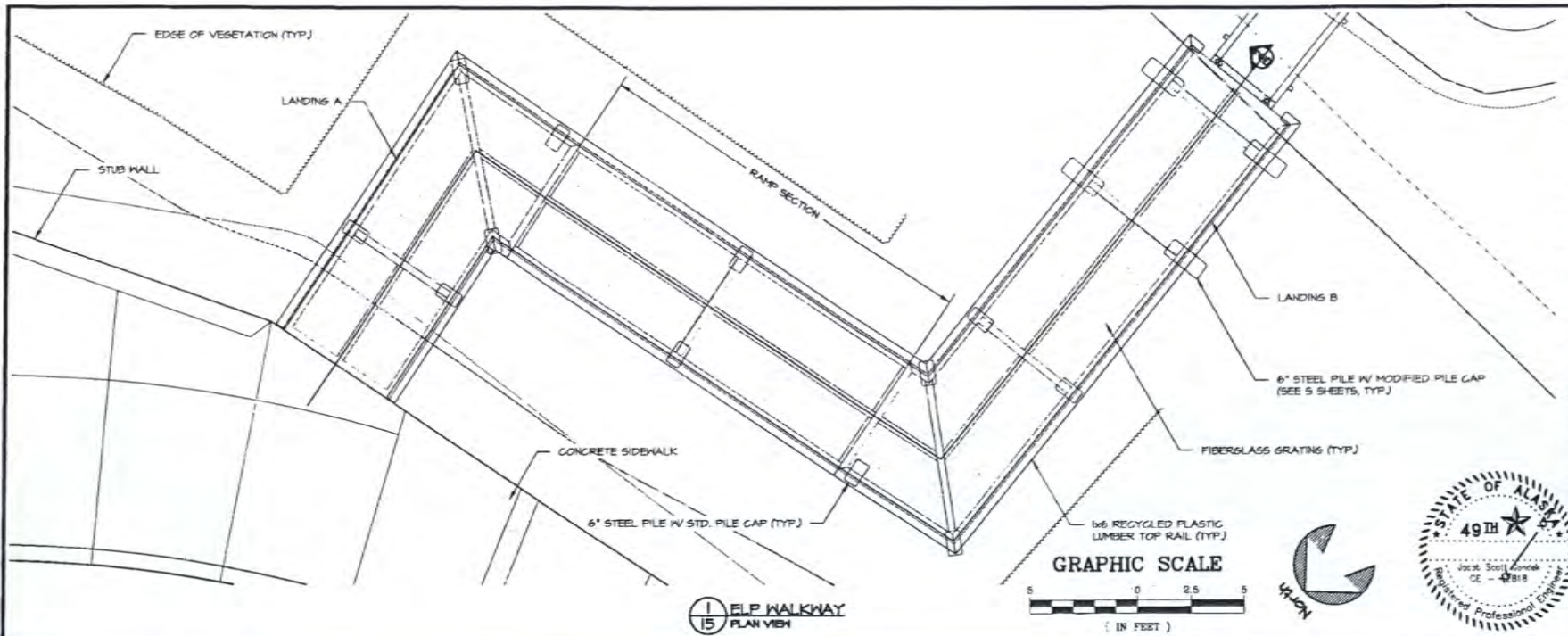
1. REBAR SHALL BE WIRED TIED TO STIRRUPS
2. THERE SHALL BE NO LESS THAN 1-1/2" OF CONCRETE COVER OVER REINFORCING STEEL.
3. TOP SIDE OF CONCRETE PLANKS SHALL RECEIVE A HEAVY BROOM FINISH PERPENDICULAR DIRECTION OF TRAVEL.
4. 4"x12 TREATED TIMBER SILLS SHALL BE PROCURED IN 12' MIN. SILL LENGTHS, IF BOAT RAMP DESIGN PERMITS.
5. SEPARATION GEOTEXTILE SHALL BE PLACED BEFORE INSTALLING TREATED TIMBER SILLS.
6. ALL SPACES BTWN CONCRETE PLANKS SHALL BE FILLED W/ JOINT AGGREGATE.

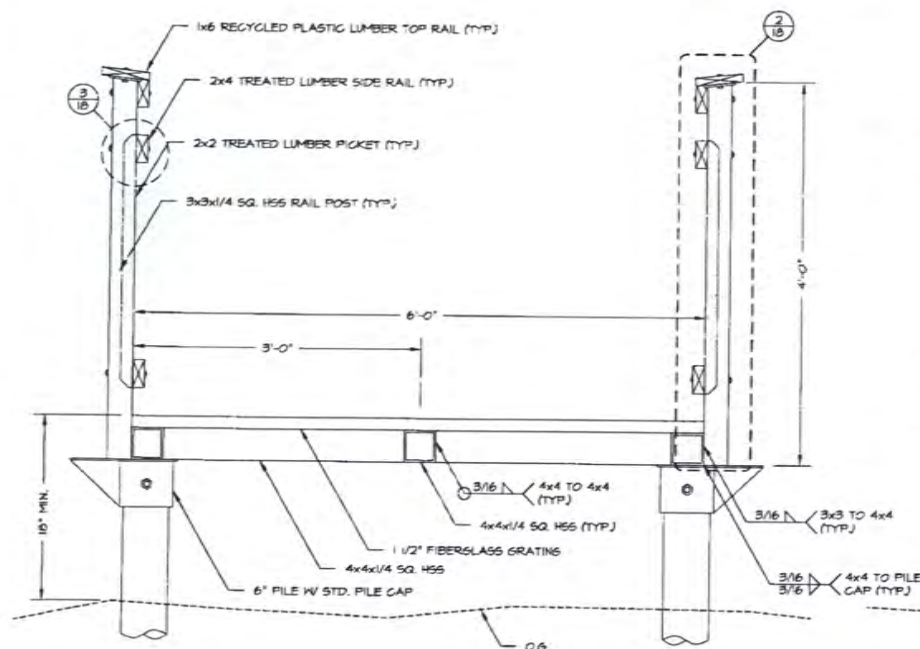
2 SECTION
254 DETAIL
25

PLANS DEVELOPED BY:
DEPARTMENT OF NATURAL RESOURCES
550 W 7TH AVE SUITE 1540
ANCHORAGE, AK 99501
907. 269. 8731

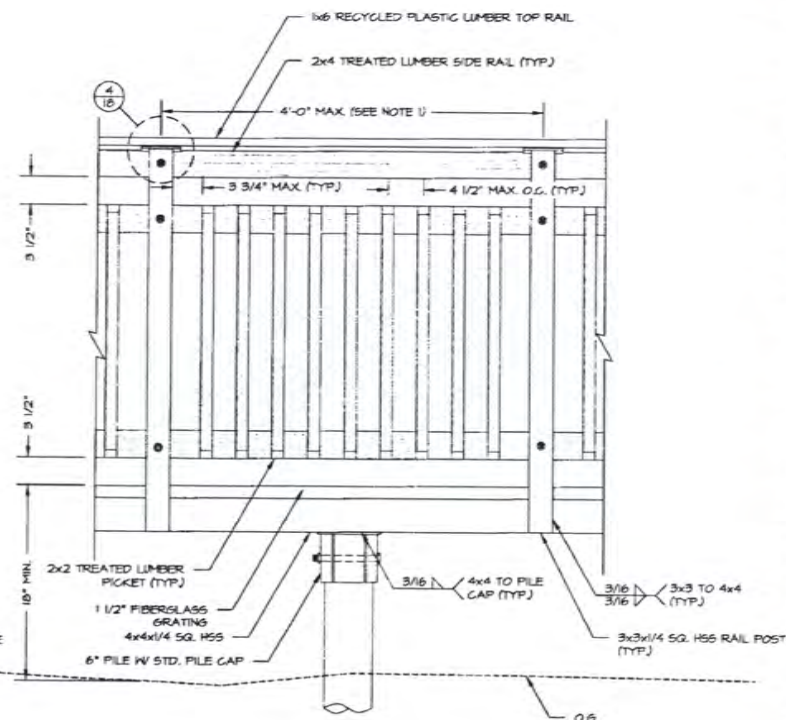








1
17 TYPICAL SECTION



2
17 ELEVATION DETAIL



PLANS DEVELOPED BY:
DEPARTMENT OF NATURAL RESOURCES
550 W 11TH AVE SUITE 1340
ANCHORAGE, AK 99501
907.269.8731

STATE OF ALASKA DEPARTMENT OF NATURAL RESOURCES

ELP WALKWAY DETAIL

EAGLE ROCK KRMA
FACILITY IMPROVEMENTS
PROJECT NO. 78036-B



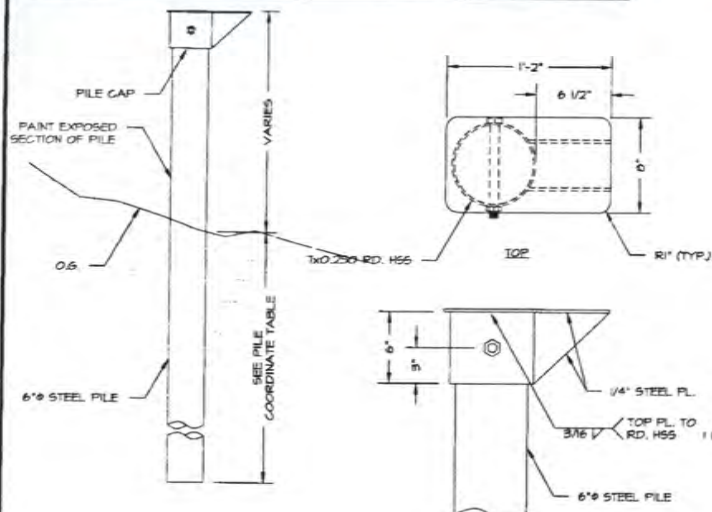
PREPARED BY: EAT
DRAWN BY: EAT
REVIEWED BY: JSC
DATE: 06/04/2017

SHEET

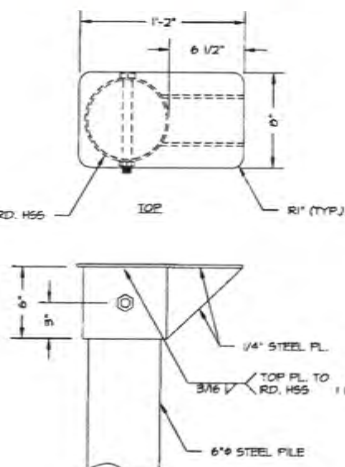
15

OF 24 SHEETS

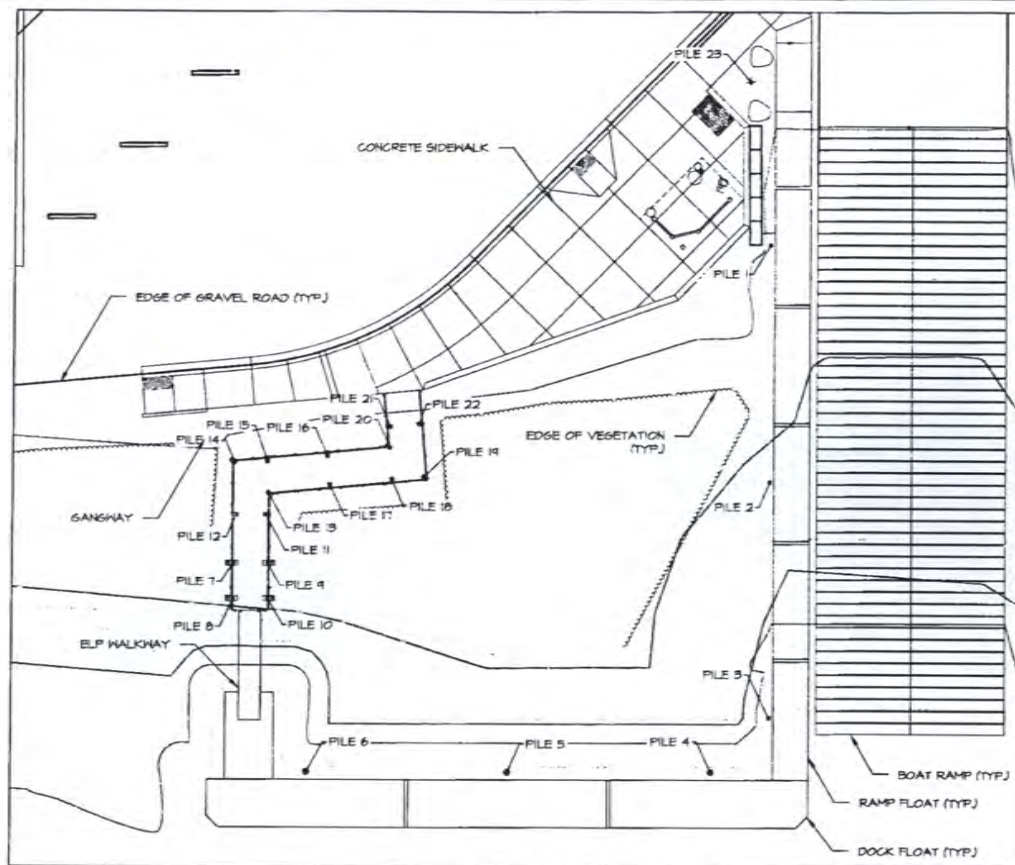
PILE COORDINATE TABLE					
POINT #	NORTHINGS	EASTINGS	CUT OFF ELEV.	EMBED. DEPTH	DESCRIPTION
PILE 1	2343806.87	1440671.96	25.00'	25'	8" GAL - RAMP FLOAT
PILE 2	2343767.38	1440674.73	25.00'	25'	8" GAL - RAMP FLOAT
PILE 3	2343727.84	1440671.50	25.00'	25'	8" GAL - RAMP FLOAT
PILE 4	2343719.61	1440660.96	25.00'	25'	12" GAL - DOCK FLOAT
PILE 5	2343722.35	1440627.51	25.00'	25'	12" GAL - DOCK FLOAT
PILE 6	2343725.08	1440594.06	25.00'	25'	12" GAL - DOCK FLOAT
PILE 7	2343760.95	1440584.62	21.52'	18'	6" - LIFTING FRAME
PILE 8	2343734.91	1440584.13	21.52'	18'	6" - LIFTING FRAME
PILE 9	2343760.48	1440540.26	21.52'	18'	6" - LIFTING FRAME
PILE 10	2343754.50	1440584.71	21.52'	18'	6" - LIFTING FRAME
PILE 11	2343768.64	1440540.52	21.52'	15'	6" - ELP WALKWAY
PILE 12	2343769.08	1440585.64	21.52'	15'	6" - ELP WALKWAY
PILE 13	2343712.30	1440541.24	21.52'	15'	6" - ELP WALKWAY
PILE 14	2343771.88	1440586.05	21.52'	15'	6" - ELP WALKWAY
PILE 15	2343771.51	1440541.44	21.52'	15'	6" - ELP WALKWAY
PILE 16	2343771.68	1440601.51	21.36'	15'	6" - ELP WALKWAY
PILE 17	2343712.84	1440601.63	21.36'	15'	6" - ELP WALKWAY
PILE 18	2343712.93	1440611.93	21.14'	15'	6" - ELP WALKWAY
PILE 19	2343712.93	1440617.40	21.14'	15'	6" - ELP WALKWAY
PILE 20	2343718.26	1440611.96	21.14'	15'	6" - ELP WALKWAY
PILE 21	2343781.70	1440612.36	21.14'	15'	6" - ELP WALKWAY
PILE 22	2343781.76	1440617.20	21.14'	15'	6" - ELP WALKWAY
PILE 23	2343834.41	1440676.86			8" - ELEG. LIGHT POLE



2 ELP WALKWAY PILE
ELEVATION



3 STD. PILE CAP
DETAIL



19 PILE PLAN

NOTES:

1. PILES SHALL BE INSTALLED TO ENSURE THAT THERE IS SUFFICIENT CLEARANCE FOR THE GRADE BREAKS IN THE ELP WALKWAY.
2. ELP WALKWAY, DOCK FLOATS, & RAMP FLOATS PARTIALLY OMITTED FOR CLARITY.

PLANS DEVELOPED BY:
DEPARTMENT OF NATURAL RESOURCES
350 W 11TH AVE SUITE 1340
ANCHORAGE, AK 99501
407. 269. 8731



STATE OF ALASKA DEPARTMENT OF NATURAL RESOURCES

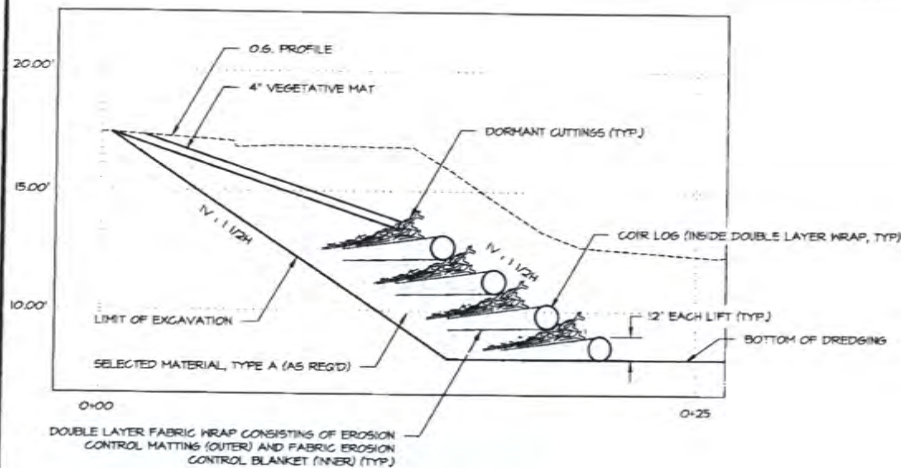
EAGLE ROCK KRMA
FACILITY IMPROVEMENTS
PROJECT NO. 78036-3

PILE PLAN

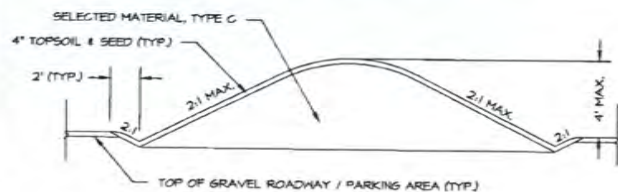


PREPARED: EAT
DRAWN: EAT
REVIEWED: JSG
DATE: 06/04/2017

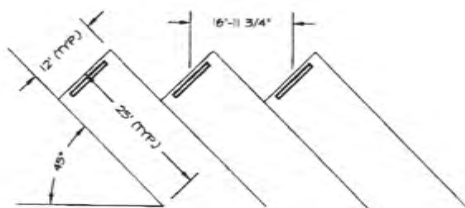
SHEET
16
OF 24 SHEETS



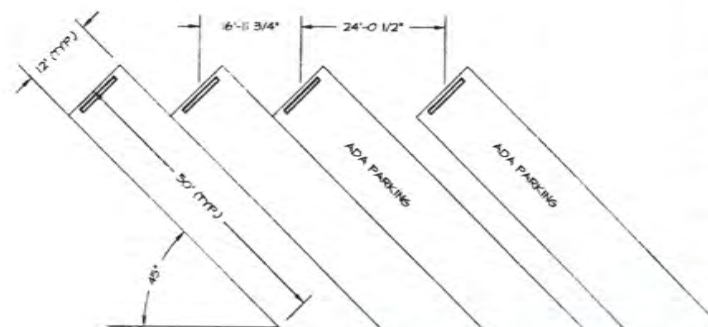
1 BRUSH LAYERING
30 TYPICAL SECTION



3 EARTH MOUND
30 TYPICAL SECTION



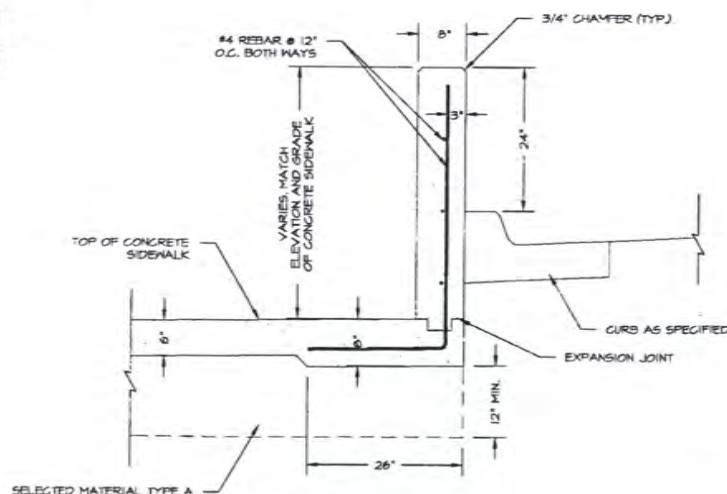
4 ANGLED VEHICLE PARKING
30 DETAIL



2 ANGLED VEHICLE & TRAILER PARKING
30 DETAIL

NOTES:

1. HEIGHT OF SIDEWALK RETAINING WALL DEPENDANT ON CONCRETE SIDE WALK GRADING PLAN.



5 SIDEWALK RETAINING WALL
30 DETAIL



PLANS DEVELOPED BY:
DEPARTMENT OF NATURAL RESOURCES
550 W 11TH AVE SUITE 1340
ANCHORAGE, AK 99501
907.269.8131

STATE OF ALASKA DEPARTMENT OF NATURAL RESOURCES

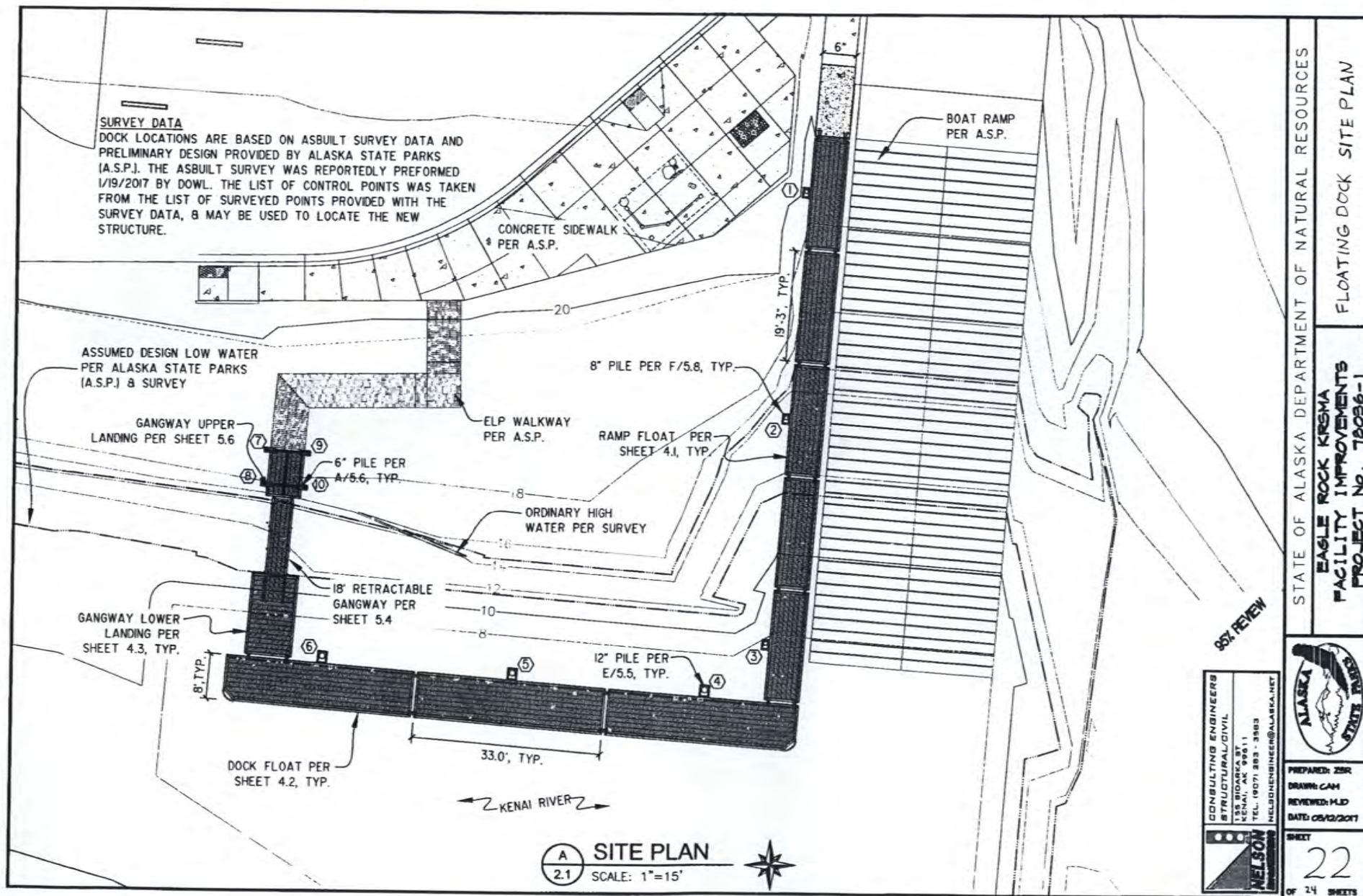


PREPARED: EAT
DRAWN: EAT
REVIEWED: JSS
DATE: 06/04/2017

SHEET
21
OF 24 SHEETS

MISCELLANEOUS DETAILS

EAGLE ROCK KRMA
FACILITY IMPROVEMENTS
PROJECT NO. 78036-B



STATE OF ALASKA DEPARTMENT OF NATURAL RESOURCES

EAGLE ROCK KRMA
FACILITY IMPROVEMENTS
PROJECT No. 78036-1



PREPARED: ZBR
DRAWN: CAN
REVIEWED: HLD
DATE: 05/12/2017

SHEET
22
OF 24 SHEETS

CONSULTING ENGINEERS
STRUCTURAL/CIVIL
135 BIDARCA ST.
KENAI, AK 99511
TEL: (907) 283-3883
NELSONENGINEERS@ALASKA.NET

NOTE:

1) USE WINCH ONLY FOR RAISING GANGWAY. INSTALL SAFETY CHAINS TO RETAIN GANGWAY IN UPRIGHT POSITION DURING OFF-SEASON. RELEASE TENSION ON WINCH CABLE. DO NOT USE WINCH FOR LONG-TERM SUSPENSION OF GANGWAY. REMOVE WINCH WHEN NOT IN USE TO AVOID UNAUTHORIZED USE.

2) FLOAT & GANGWAY IN DOWN POSITION ARE NOT DESIGNED FOR WINTER CONDITIONS. RAISE GANGWAY & REMOVE FLOAT EACH FALL PRIOR TO LOW WATER REACHING THE DESIGN LOW WATER LEVEL.

3/4" GRADE 80 NON-GALVANIZED
CHAIN W/ HOOK AT EACH END,
BOTH SIDES OF GANGWAY

SPREADER BAR
PER DETAIL G/5.4

45°
WINTER
POSITION

LIFTING FRAME
PER SHEET 5.6

UPPER GANGWAY
LANDING PER
SHEET 5.6

DESIGN HIGH WATER (DHL)
LEVEL 20.7'

18" MIN

6" SCH. 40 PILE @
UPPER LANDING, TYP.

MEAN HIGH WATER (MHW)
LEVEL 14.6'

DESIGN LOW WATER
LEVEL 11.5'

MEAN LOWER LOW WATER
(MLLW) (NOT SHOWN)

FINISH GRADE
PER SITE PLAN

GANGWAY PER SHEET 5.4

LANDING RAMP
PER SHEET F/5.4

LOWER LANDING FLOAT
PER SHEET 4.3

80% REVIEW

CONSULTING ENGINEERS
STRUCTURAL/CIVIL
155 BROADWAY
KENAI, AK 99501
TEL: (907) 383-3553
HEL@ENGINEER@ALASKA.NET



STATE OF ALASKA DEPARTMENT OF NATURAL RESOURCES

EAGLE ROCK KREMA
FACILITY IMPROVEMENTS
PROJECT No. 78096-1

GANGWAY PROFILE



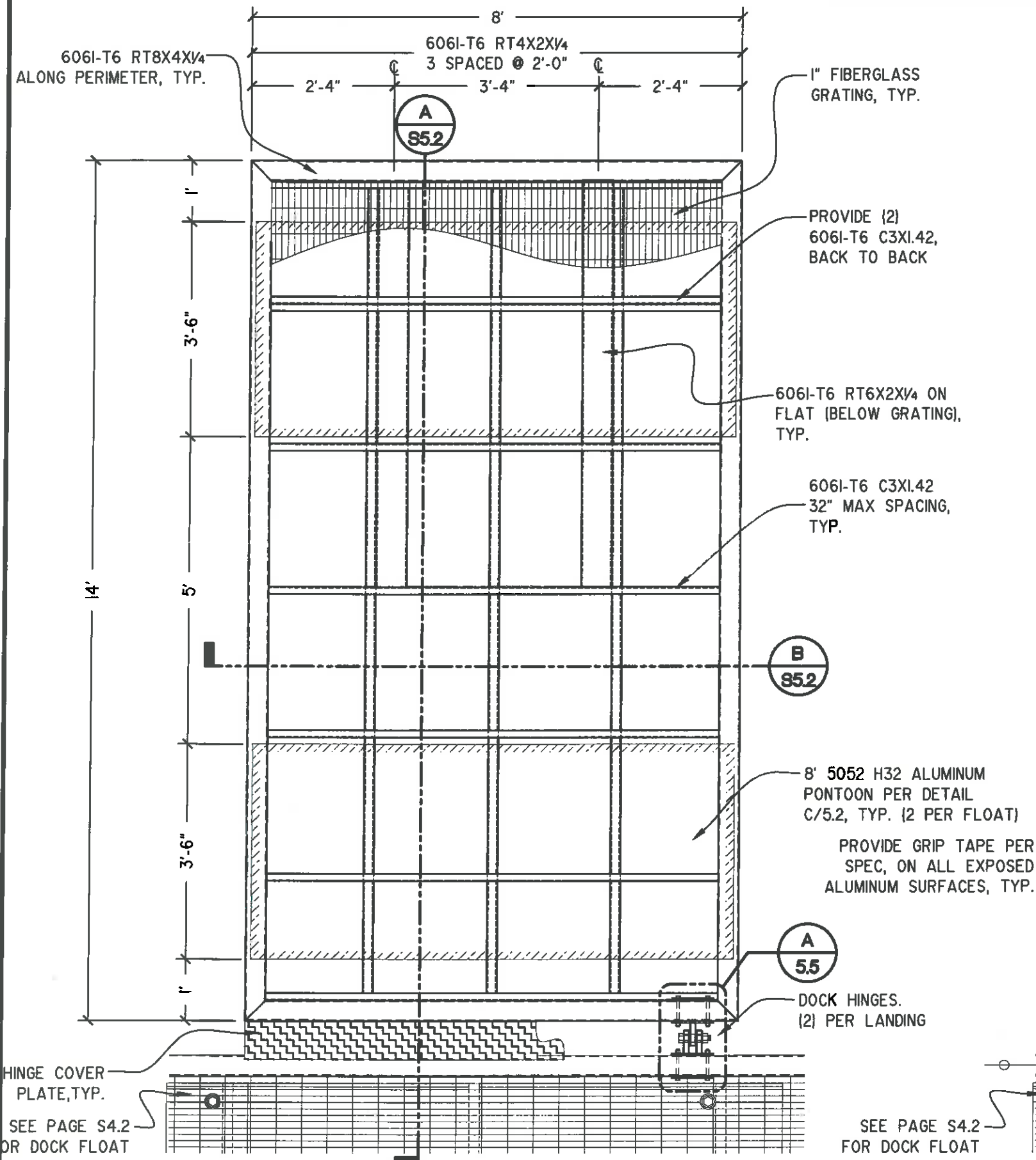
PREPARED: ZBR
DRAWN: CAM
REVIEWED: MLD
DATE: 05/12/2017

SHEET
23
OF 24 SHEETS

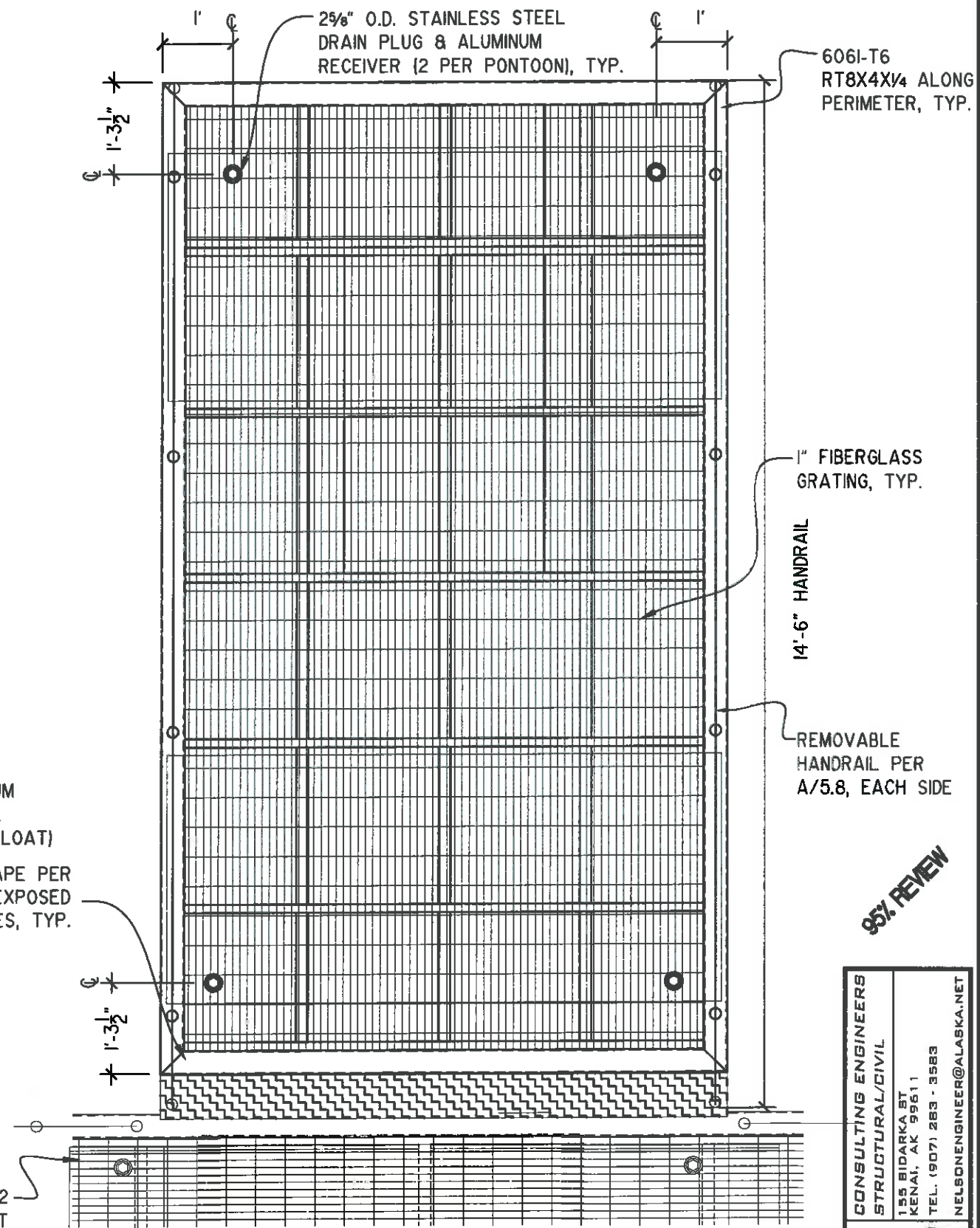
A
3.1

GANGWAY PROFILE - WEST

SCALE: 3/8" = 1'-0"



A
4.3
LOWER LANDING DOCK PLAN
SCALE: 1/2"=1'-0"



B
4.3
LOWER LANDING DOCK LAYOUT
SCALE: 1/2"=1'-0"

95% REVIEW

CONSULTING ENGINEERS
STRUCTURAL/CIVIL
155 BIDARCA ST.
KENAI, AK 99611
TEL. (907) 283 - 3583
NELSONENGINEER@ALASKA.NET

NELSON



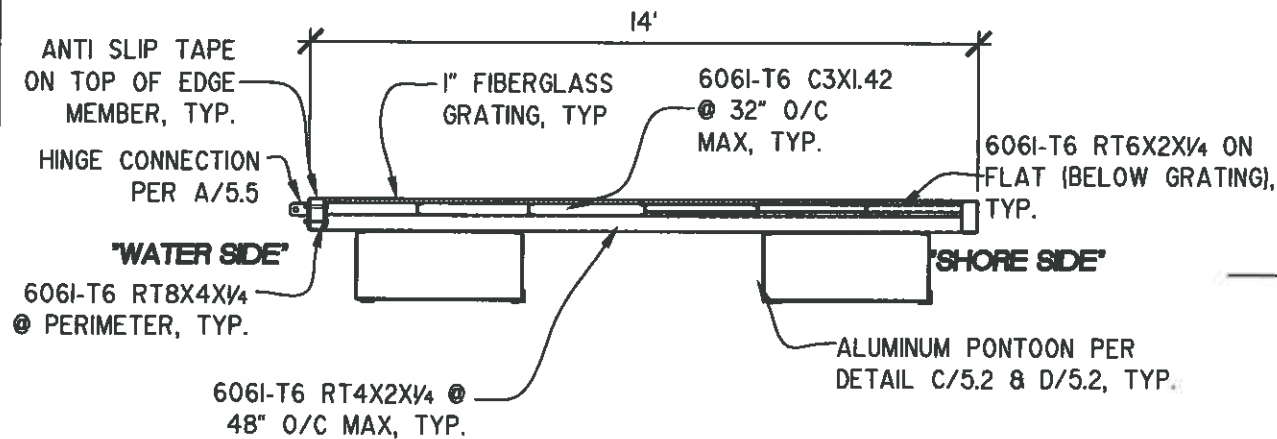
PREPARED: ZSR
DRAWN: CAM
REVIEWED: MJD
DATE: 03/12/2017

SHEET
4.3
OF 14 SHEETS

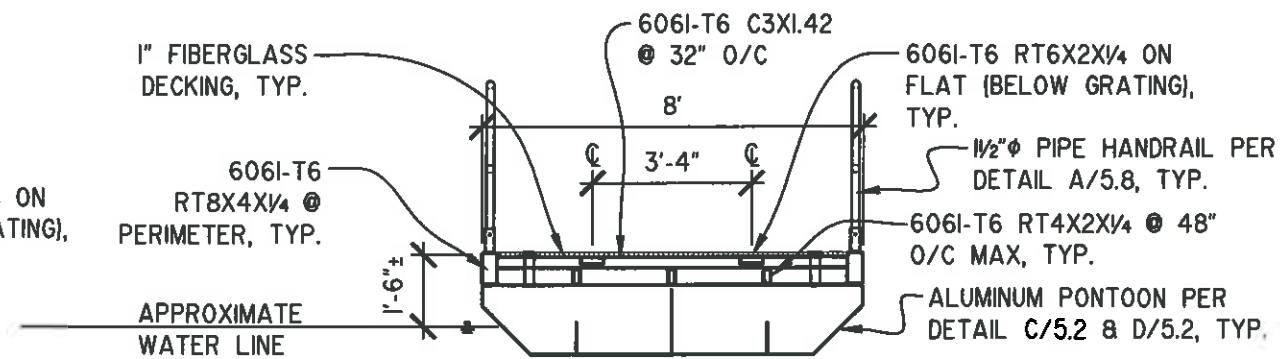
STATE OF ALASKA DEPARTMENT OF NATURAL RESOURCES

**EAGLE ROCK KRSMA
FACILITY IMPROVEMENTS
PROJECT No. 78086-1**

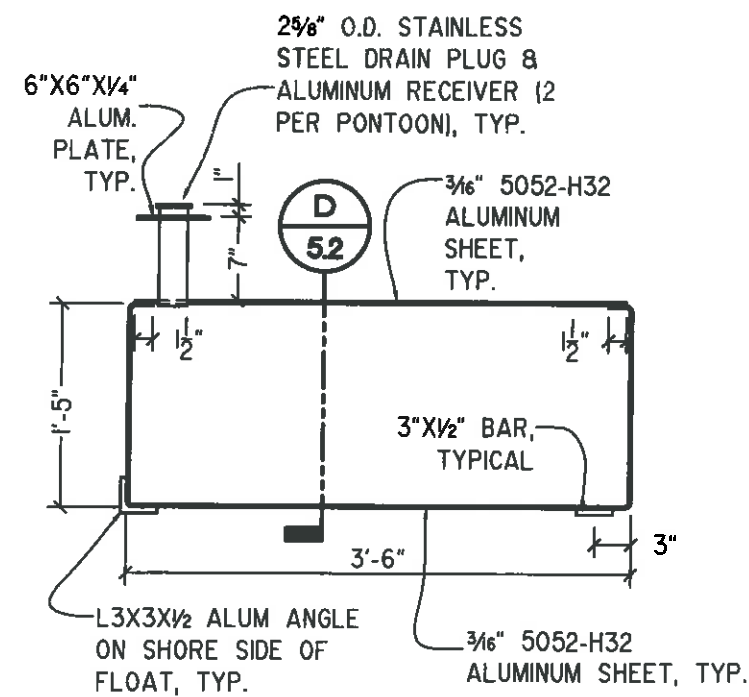
LOWER LANDING PLAN



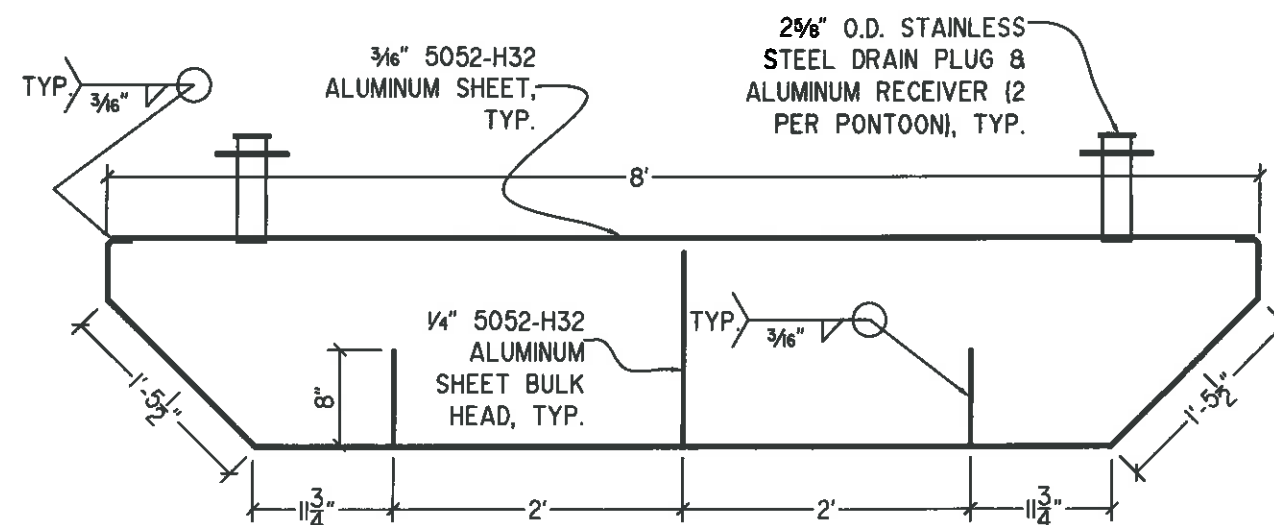
A LOWER LANDING FLOAT SECTION
5.2 SCALE: 1/4"=1'-0"



B LOWER LANDING FLOAT SECTION
5.2 SCALE: 1/4"=1'-0"



C LANDING PONTOON SECTION
5.2 SCALE: 3/4"=1'-0"



D LANDING PONTOON SECTION
5.2 SCALE: 3/4"=1'-0"

NOTE:
LOCATE STEEL DRAIN PLUGS
PER PLAN ON SHEET S4.3

95% REVIEW

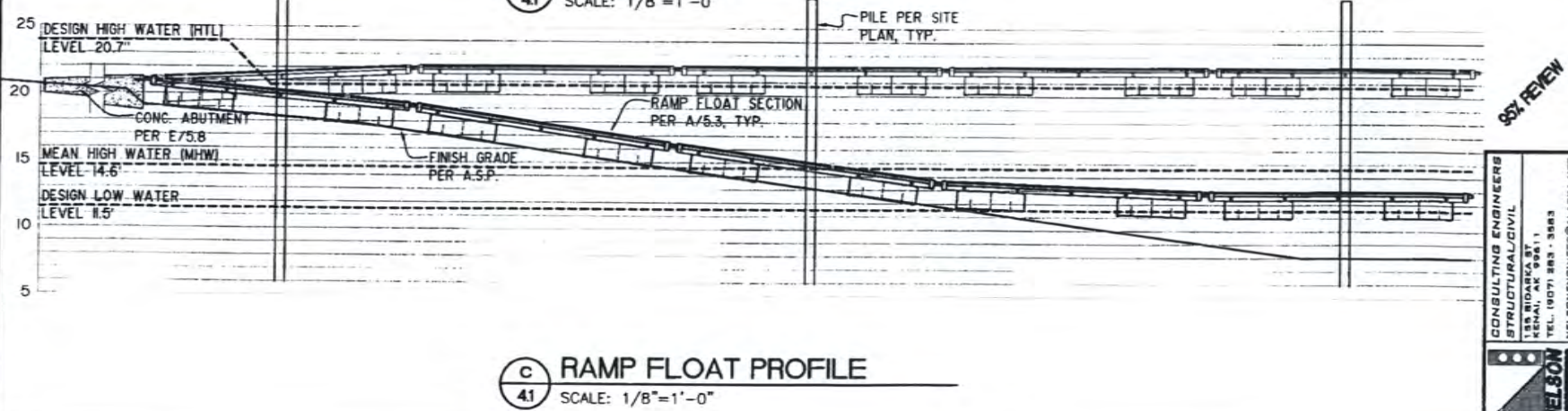
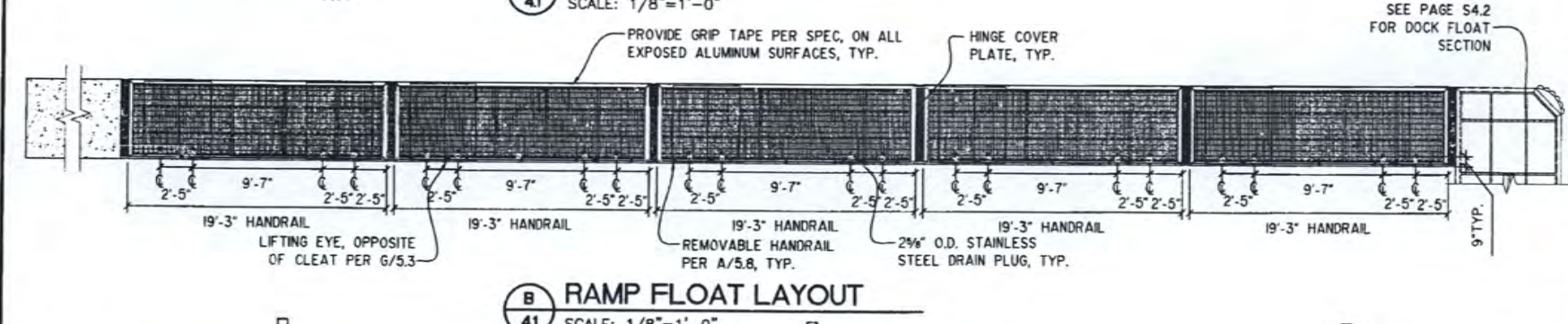
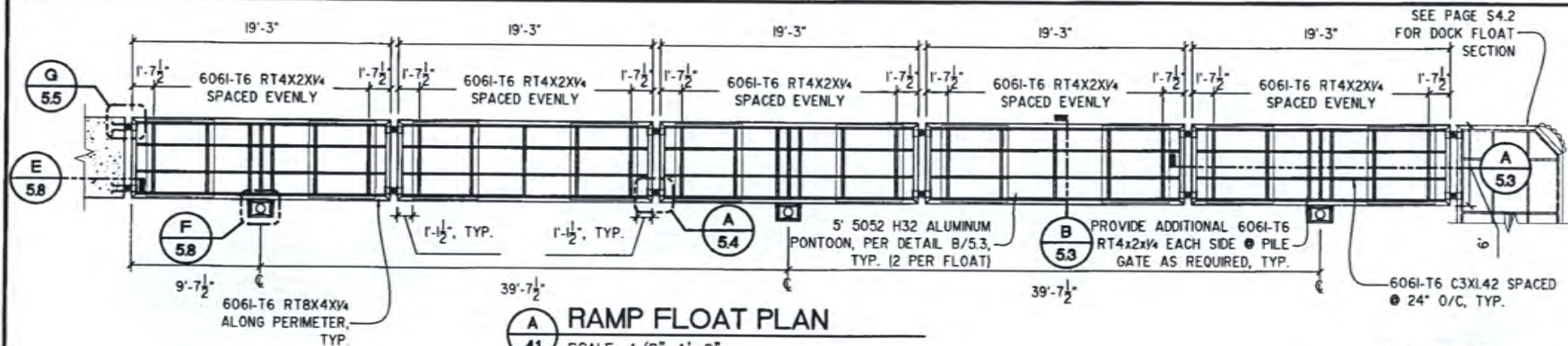
CONSULTING ENGINEERS
STRUCTURAL/CIVIL
155 BIDARCA ST.
KENAI, AK 99611
TEL. (907) 283-3583
NELSONENGINEER@ALASKA.NET



PREPARED: ZSR
DRAWN: CAM
REVIEWED: MLD
DATE: 05/12/2017

SHEET
5.2
OF 14 SHEETS

STATE OF ALASKA DEPARTMENT OF NATURAL RESOURCES
EAGLE ROCK KRMA
FACILITY IMPROVEMENTS
PROJECT No. 78096-1
LOWER LANDING FLOAT SECTION



STATE OF ALASKA DEPARTMENT OF NATURAL RESOURCES

EAGLE ROCK KRSMA FACILITY IMPROVEMENTS PROJECT No. 78096-1

ALASKA STATE ENGINEERS

CONSULTING ENGINEERS
STRUCTURAL/CIVIL
155 MIDLAND ST.
ANCHORAGE, ALASKA 99501
TEL. (907) 583-3883
HELLO@ENGINEERS@ALASKA.NET

PREPARED: ZSR
DRAWN: CAM
REVIEWED: MJD
DATE: 05/12/2017

SHEET
24
OF 24 SHEETS