



**US Army Corps
of Engineers ®**
Alaska District

Operations Branch

Public Notice of Section 408 Request

Public Notice Date June 26, 2024
Expiration Date July 26, 2024
Identification No. 408-POA-2022-0012

Please refer to the identification number when replying.

Knik Bethel Yard Dock Construction Kuskokwim River, Bethel, Alaska

The U. S. Army Corps of Engineers (USACE), Alaska District has received a request pursuant to Section 14 of the Rivers and Harbors Act of 1899 (33 U.S.C. 408), hereafter referred to as Section 408, from PND Engineers Inc on behalf of Knik Construction Company, for actions that will alter/occupy the Federal navigation limits within the bank stabilization along the Kuskokwim River, in Bethel, Alaska. Bethel bank stabilization was authorized for construction in 1986 and constructed in 1996 – 1998, and then authorized for an extension in FY2001 with construction occurring in 2007. The project's main Federal features include riprap consisting of 8,200 feet and a riprap extension consisting of 1,200 feet.

Section 408 authorizes the Secretary of the Army, on the recommendation of the Chief of Engineers of the USACE, to grant permission for the alteration, occupation, or use of a USACE Civil Works project if the Secretary determines the activity will not be injurious to the public interest and will not impair the usefulness of the Federal project.

The requester's proposed project, submitted by PND Engineers Inc, on behalf of the Knik Construction Company, is to construct a sheet pile wall oriented parallel to the bank with increased uplands infrastructure capacity above it, and riprap installed at the downstream end and upstream end to tie the wall into the existing USACE bank stabilization infrastructure. The proposed project consists of the following:

- Approximately 1,100 foot long sheet pile dock. This dock will be set at a minimum elevation of -15 feet mean lower low water at the face.
- No dredging is proposed.
- Approximately 50,000 cubic yards of sand and gravel fill, and 5,000 cubic yards of riprap would be placed into 3.2 acres below the high tide line.
- A single 48 inch diameter culvert will be installed in the bulkhead to facilitate uplands drainage.

Drawings showing the requestor's selected design alternative are enclosed. A copy of this public notice can also be found under the Documents Available for Review (Operations and Maintenance) portion of the following webpage:

<https://www.poa.usace.army.mil/Library/Reports-and-Studies/>

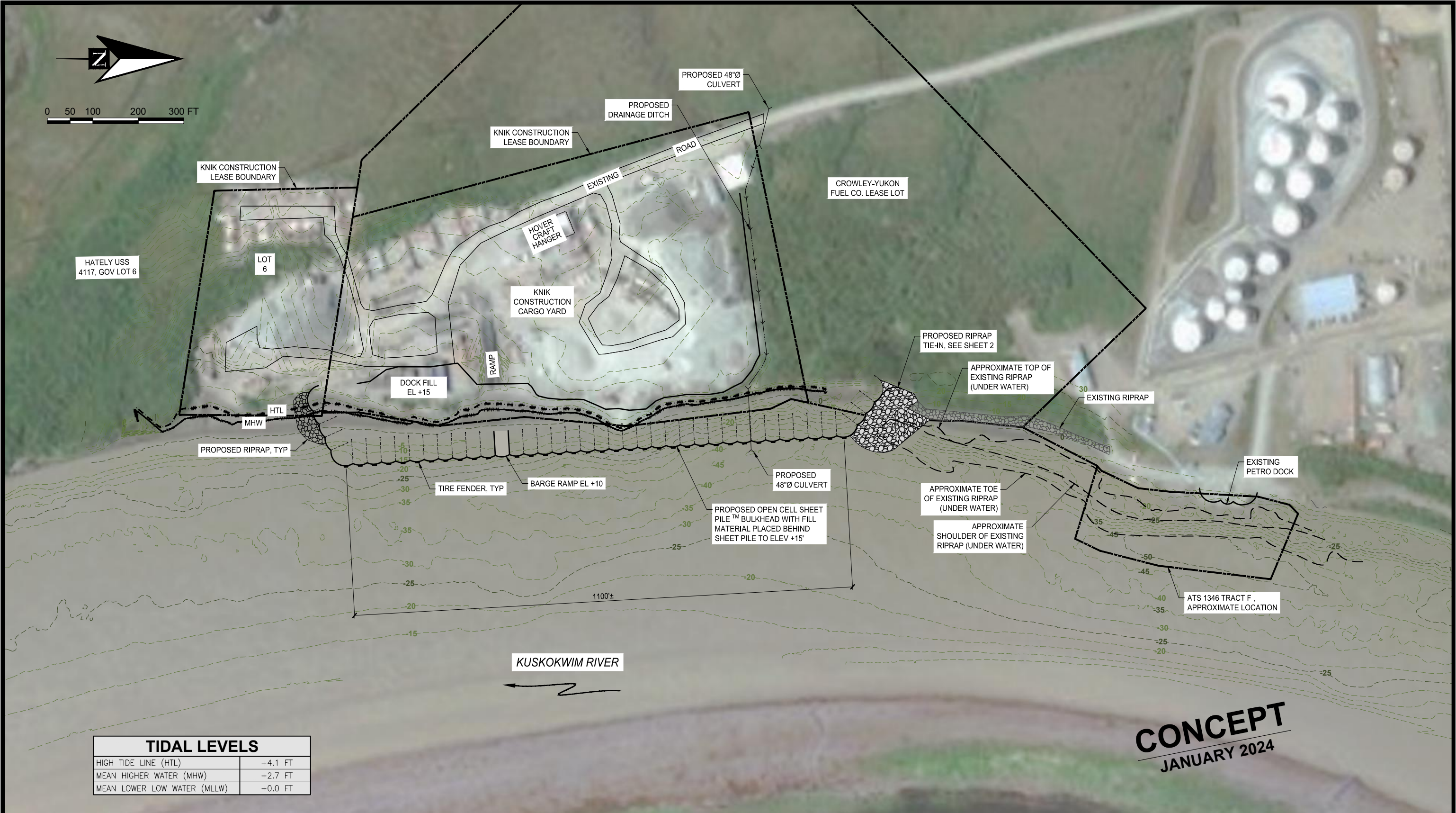
In accordance with Engineering Circular (EC) 1165-2-220, the USACE Alaska District is seeking public input as part of the decision-making process for this Section 408 request to alter/occupy the Federal navigation limits along the Kuskokwim River, Bethel, Alaska. The USACE Section 408 review is limited to the potential impacts to the usefulness of the Federal project, the public interest, and the environment that may be caused by the alteration in-place. Potential environmental impacts will also be evaluated under a Department of the Army nationwide permit process managed by the USACE, Alaska District Regulatory Division. The actual construction of the proposed work is the requestor's action.

Please submit comments regarding the proposed alteration/occupation of the Federal navigation limits for this Section 408 request to Monica.J.Velasco@usace.army.mil or to the address below:

U.S. Army Corps of Engineers, Alaska District
ATTN: CEPOA-COO (Velasco)
P.O. Box 6898
JBER, Alaska 99506-0898

No public meeting is scheduled for this action. If you believe a meeting should be held, then please send a written request to the above address during the 30-day review period explaining why you believe a meeting is necessary. For additional information about the proposed project, please contact Monica Velasco of the Operations Branch at (907) 952-1977, at the above email, or USACE Alaska District postal address.

Julie L. Anderson, P.E.
Chief, Operations Branch



TIDAL LEVELS	
HIGH TIDE LINE (HTL)	+4.1 FT
MEAN HIGHER WATER (MHW)	+2.7 FT
MEAN LOWER LOW WATER (MLLW)	+0.0 FT

NOTE:
BATHYMETRY SURVEY PERFORMED MAY 2015 & MAY 2022

PND Engineers, Inc. is not responsible for safety programs, methods or procedures of operation, or the construction of the design shown on these drawings. Where specifications are general or not called out, the specifications shall conform to standards of industry. Drawings are for use on this project only and are not intended for reuse without written approval from PND. Drawings are also not to be used in any manner that would constitute a detriment directly or indirectly to PND.

REV	DATE	DESCRIPTION

DATE: _____

1506 West 36th Avenue
Anchorage, Alaska 99503
Phone: 907.561.1011
www.pndengineers.com
AK. LIC# AECC250

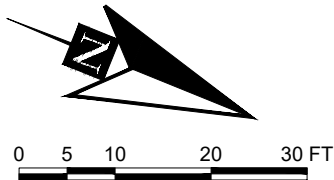


**KNIK CONSTRUCTION
BETHEL YARD DOCK**

SITE PLAN

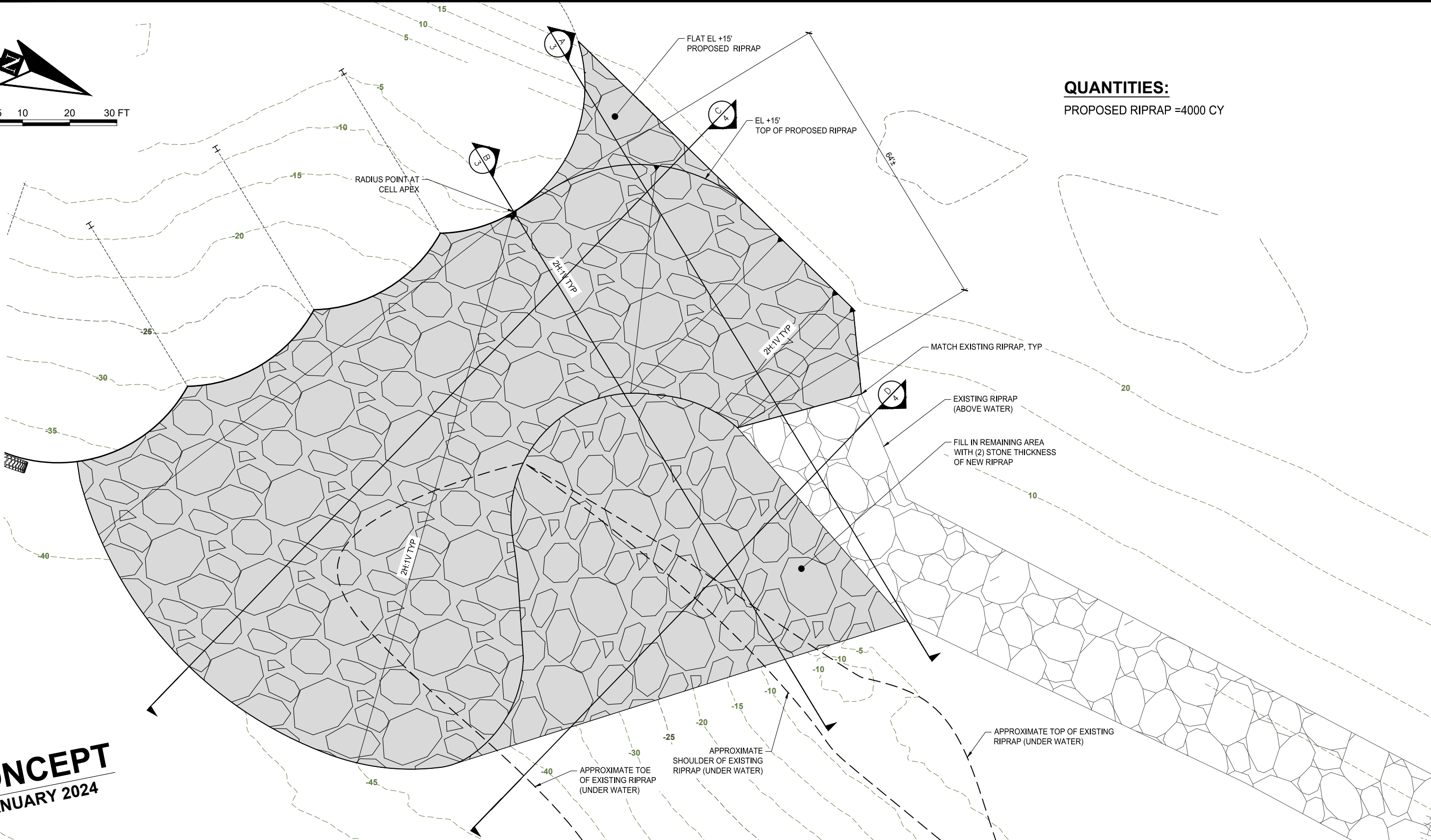
DESIGNED BY:	EP/DDH	DATE:	JANUARY 2024
CHECKED BY:	DST	PROJECT NO:	131093

SHEET NO: **1** OF 4



QUANTITIES:
PROPOSED RIPRAP =4000 CY

CONCEPT
JANUARY 2024



PND Engineers, Inc. is not responsible for safety programs, methods or procedures of operation, or the construction of the design shown on these drawings. Where specifications are general or not called out, the specifications shall conform to standards of industry. Drawings are for use on this project only and are not intended for reuse without written approval from PND. Drawings are also not to be used in any manner that would constitute a detriment directly or indirectly to PND.

REV	DATE	DESCRIPTION

DATE: _____

1506 West 36th Avenue
Anchorage, Alaska 99503
Phone: 907.561.1011
www.pndengineers.com
AK. LIC# AECC250

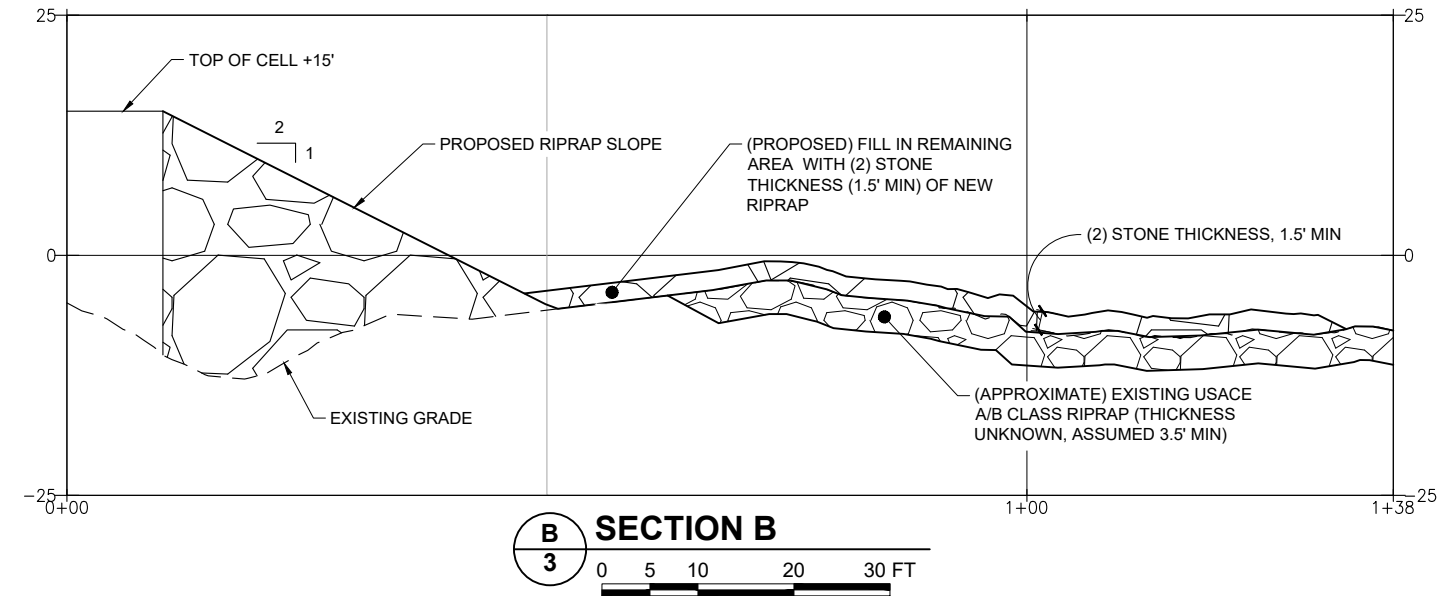
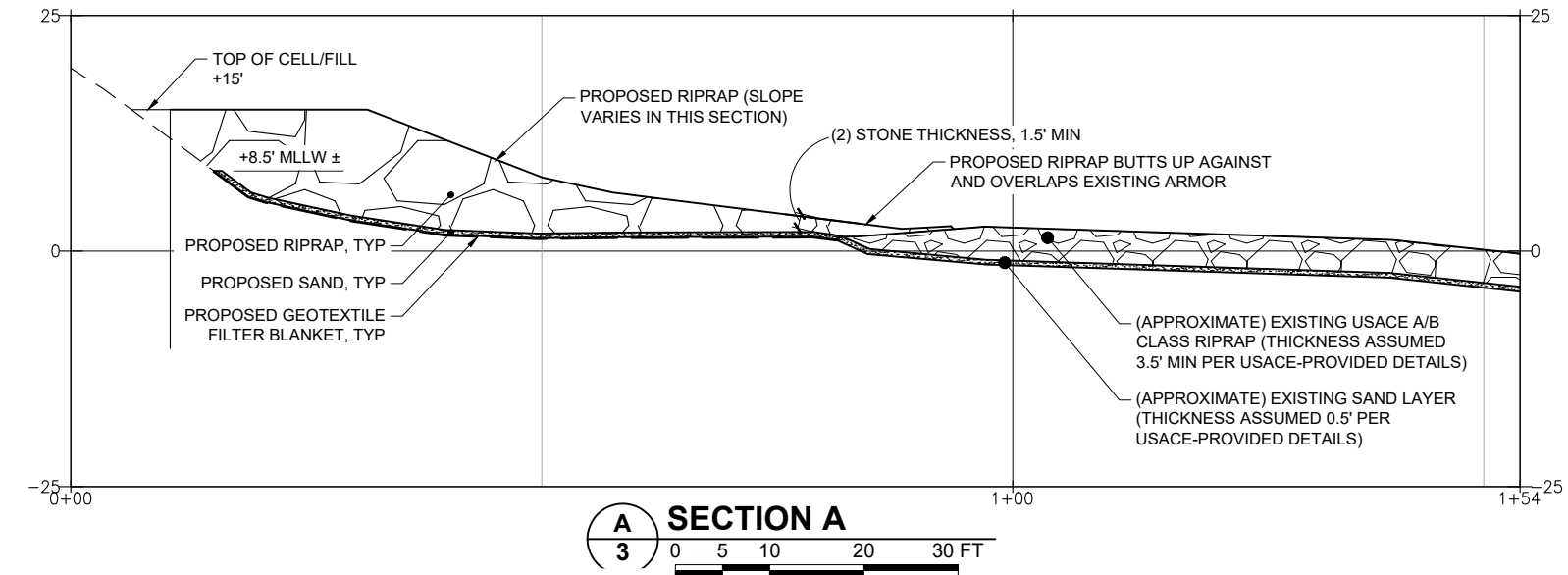


**KNIK CONSTRUCTION
BETHEL YARD DOCK**

RIPRAP TIE-IN DETAIL

DESIGNED BY:	EP/DDH	DATE:	JANUARY 2024
CHECKED BY:	DST	PROJECT NO:	131093

SHEET NO: **2** OF **R**



NOTES:

- ALL NEW RIPRAP SHALL BE SIZED, AT A MINIMUM, TO CONFORM WITH THE FOLLOWING GRADATION TO MATCH EXISTING USACE "A" ROCK:

% LIGHTER BY WEIGHT	WEIGHT (LBS)
NOT MORE THAN 95	800
NOT MORE THAN 50	400
NOT MORE THAN 10	200
- RIPRAP PLACED ON UNPROTECTED AREAS SHALL BE PLACED IN A THICKNESS NOT LESS THAN TWO (2) D50 STONES OR 3.5', WHICHEVER IS GREATER. RIPRAP PLACED OVER TOP OF EXISTING ROCK SHALL BE PLACED IN A THICKNESS NOT LESS THAN TWO (2) D50 STONES OR 1.5', WHICHEVER IS GREATER.
- RIPRAP SHALL BE INSTALLED SUCH THAT IT DAYLIGHTS AT BOTTOM OF CHANNEL AT ITS NATURAL ANGLE OF REPOSE.
- SAND BEDDING AND FILTER GEOTEXTILE SHALL BE INSTALLED UNDER NEW RIPRAP ON SUITABLE SLOPES NOT LESS THAN 2H:1V BETWEEN ELEVATIONS OF +8.5' TO -2.0' MLLW.

CONCEPT
JANUARY 2024

PND Engineers, Inc. is not responsible for safety programs, methods or procedures of operation, or the construction of the design shown on these drawings. Where specifications are general or not called out, the specifications shall conform to standards of industry. Drawings are for use on this project only and are not intended for reuse without written approval from PND. Drawings are also not to be used in any manner that would constitute a detriment directly or indirectly to PND.

REV	DATE	DESCRIPTION

DATE: _____

1506 West 36th Avenue
Anchorage, Alaska 99503
Phone: 907.561.1011
www.pndengineers.com
AK. LIC# AECC250

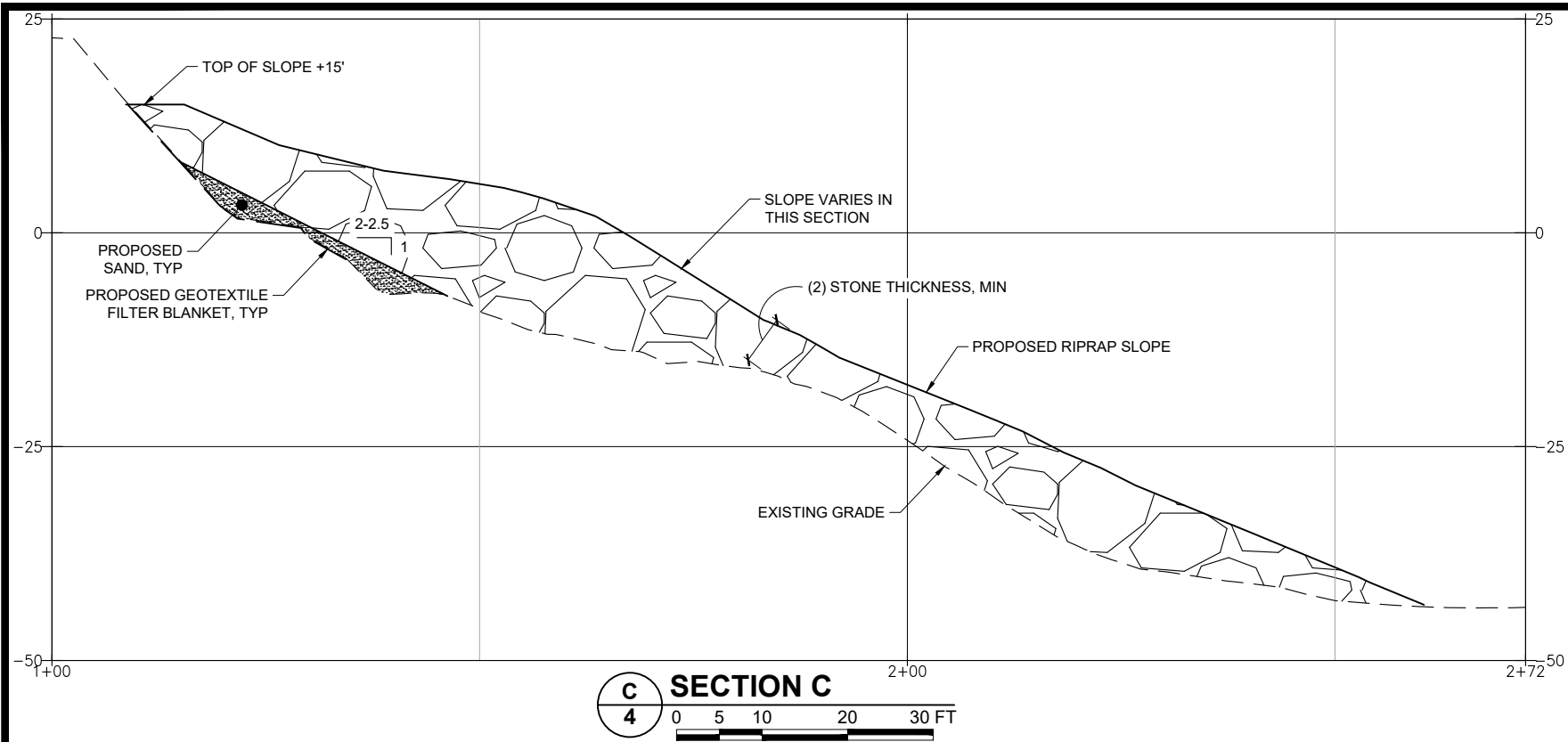


PROJECT: **KNIK CONSTRUCTION
BETHEL YARD DOCK**

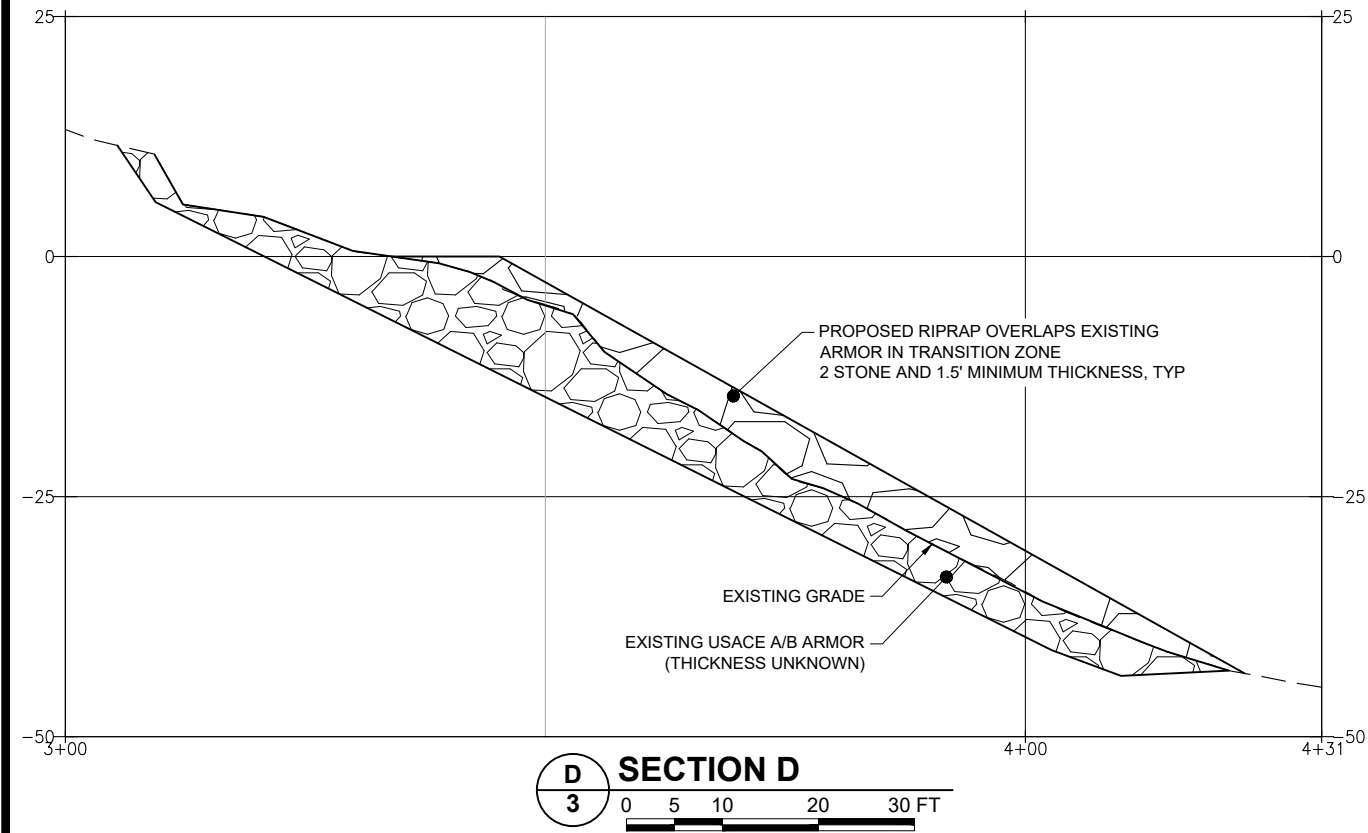
TITLE: **TYPICAL SECTIONS**

DESIGNED BY:	EP/DDH	DATE:	JANUARY 2024
CHECKED BY:	DST	PROJECT NO:	131093

SHEET NO: **3** OF 4



CONCEPT
JANUARY 2024



PND Engineers, Inc. is not responsible for safety programs, methods or procedures of operation, or the construction of the design shown on these drawings. Where specifications are general or not called out, the specifications shall conform to standards of industry. Drawings are for use on this project only and are not intended for reuse without written approval from PND. Drawings are also not to be used in any manner that would constitute a detriment directly or indirectly to PND.

REV	DATE	DESCRIPTION

DATE: _____

1506 West 36th Avenue
Anchorage, Alaska 99503
Phone: 907.561.1011
www.pndengineers.com
AK. LIC# AECC250



PROJECT: **KNIK CONSTRUCTION
BETHEL YARD DOCK**

TITLE: **TYPICAL SECTIONS**

DESIGNED BY: EP/DDH	DATE: JANUARY 2024	SHEET NO: 4 OF 4
CHECKED BY: DST	PROJECT NO: 131093	