

Alaska Regional Ports Conference

Patricia Opheen, PE

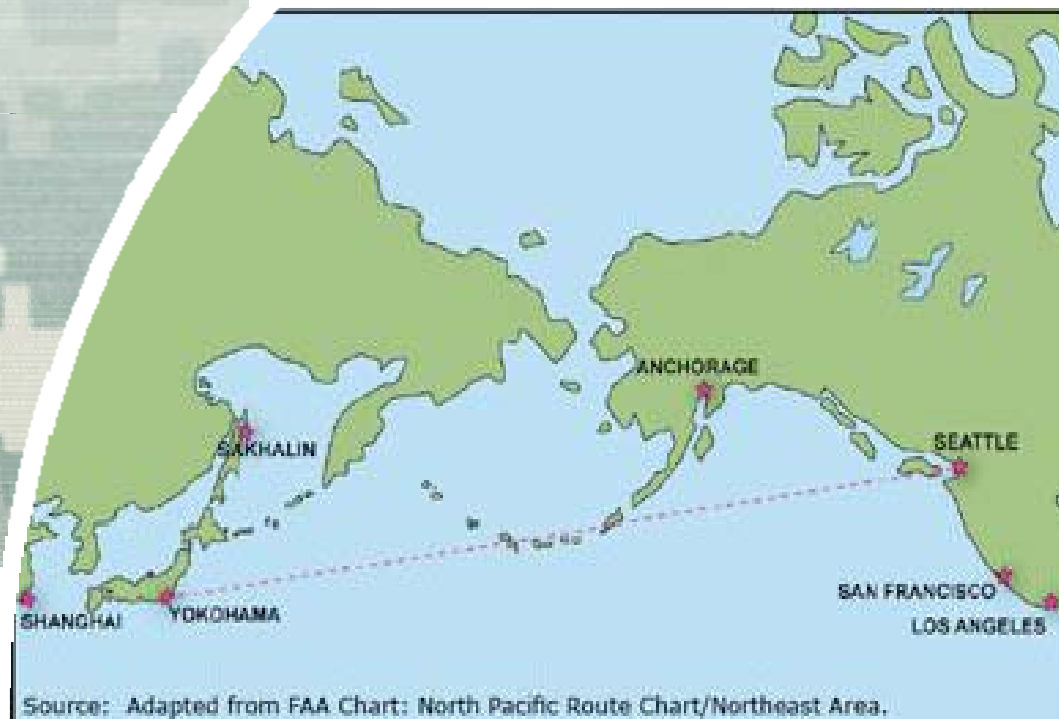
Chief, Engineering Division

Anchorage, Alaska

18 November 2010



US Army Corps of Engineers
BUILDING STRONG®



Agenda

- Marine transportation successes
- Ongoing work
 - Economic evaluation of subsistence
 - Rock quarry findings
 - Climate change effects on transportation
- The Path Forward



Marine Transportation Successes

- Constructed Harbor Projects or Phases

	Project Cost (\$000)	Basin Size (acres)	Approx # of Vessels Accommodated
Unalaska – Phase 1	8,900	16.8	75
Douglas – Phase 1	4,300	5.5	72
False Pass	23,000	5.2	88
Saint Paul	21,000	3.3	60
Chignik	8,800	4.8	70



Unalaska Harbor



Douglas Harbor



False Pass Harbor

Marine Transportation Success Stories

- Ongoing Construction Projects

	Project Cost (\$000)	Basin Size (acres)	Approx # of Vessels Accommodated
Akutan	31,897	14.9	58
Douglas Floating Breakwater – Phase 2	1,770	See Previous Slide	
Seward Breakwater Extension	4,164	11.7	346
Unalaska Floating Breakwater – Phase 2	12,526	See Previous Slide	



Akutan Harbor Site



Seward Breakwater Extension



BUILDING STRONG®

Marine Transportation Success Stories

- Projects in Design
 - Haines Harbor Expansion
 - Valdez Harbor
 - Port Lions (on hold pending funding)



Marine Transportation Success Stories

- Ongoing Harbor Studies

	Reconnaissance	Feasibility
Auke Bay	X	
Craig	X	
Kasaan	X	
Sitka	X	
AK Regional Ports		⊗
Elim		X
Homer (on hold)		⊗
Little Diomedede		X
Savoonga		X
Whittier		X
⊗ – Denotes limited funding		



Marine Transportation Success Stories

- Data Collection and Analyses
 - Western Alaska Hindcast Study
 - Western Alaska Storm-Induced Water Level Prediction
- Alaska Ocean Observing System
 - Multi-agency Initiative: DEC, F&G, DNR, Universities, USGS, USCG, Corps, USFWS, USFS, BOEMRE, and others
 - Building network of observation platforms and forecast models
- Coordinating planning and engineering efforts
 - State coastal engineers, University of Alaska, U.S. Navy



Accountability to 2008 Conference Action Items

- Develop long-range comprehensive ports and harbors plan
- Commitment to:
 - Ongoing collaboration and comprehensive planning
 - Engage in effective communication
 - Leadership
- Next Steps from 2008 Conference
 - Finalize reconnaissance report
 - Begin Statewide regional ports study
 - Discuss regional studies with potential sponsors



Capitalizing on Federal Policy Interpretations

- Subsistence Benefit Evaluation
 - Historically undervalued economic benefit
 - Partnered with Kawerak to study quantifiable value of subsistence activities
 - Will culminate in economic model which captures nuances of subsistence
- Watershed/Systems Approach
 - Harbors function as a system
- Streamline Planning Process



Improve Project Development Process

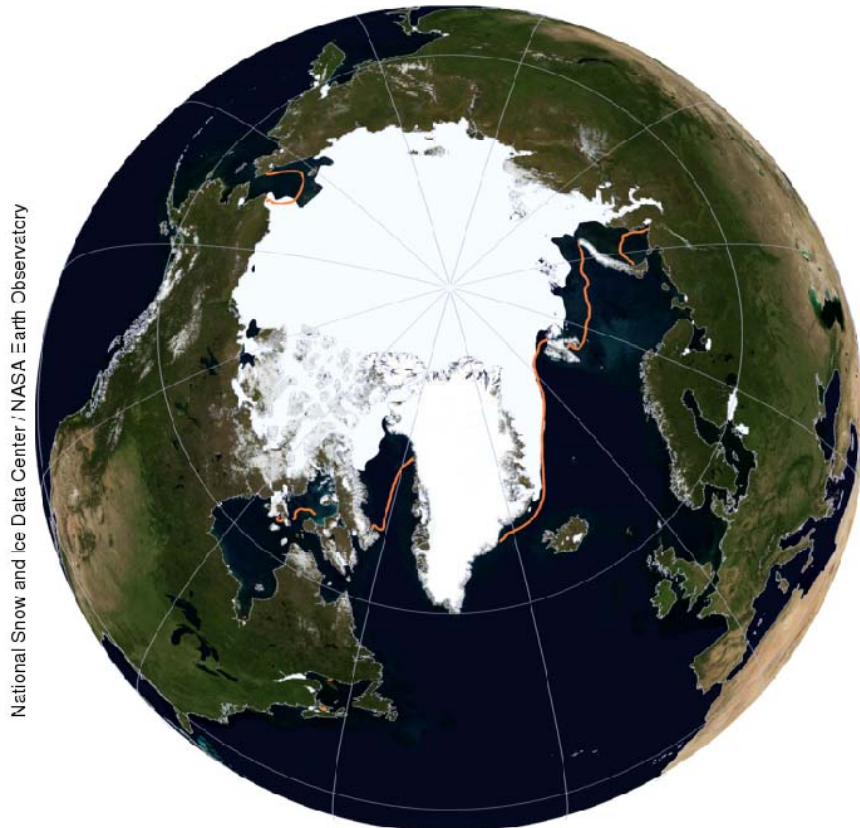
- Rock Quarry Investigation
 - Partnered with State explore new quarry development
 - Joint quarry development
 - Evaluate improvements to Corps permitting process
- Contracting Options
 - Notice to Proceed – specify multi-year time frame
 - Separable construction components (contracts)
- Shared Projects
 - Local, State, USCG, Corps, Navy, etc
 - Shared use and costs



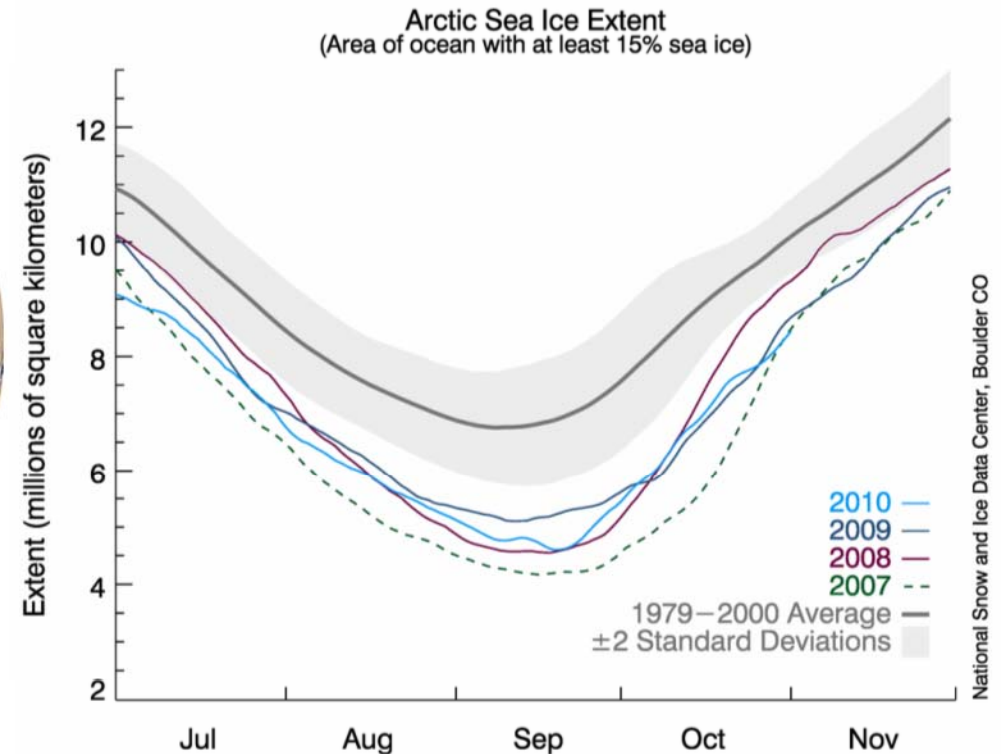
Climate Change Effects on Marine Transportation

Northern Sea Route

- Changing Ice extent, duration, thickness



— Median 1979 - 2000
Daily Sea Ice Extent for: Nov 04, 2010



01 Nov 2010

Committee for Marine Transportation Systems

- Develop and implement national MTS policies
- Interagency partnership of four lead MTS agencies
 - US Army Corps of Engineers (MG William Grisoli, Chair)
 - National Oceanic and Atmospheric Administration
 - Maritime Administration
 - U.S. Coast Guard
 - Over twenty agencies or departments represented
- 2010 Work Plan Tasks – Integrated Action Teams (IATs)
 - MTS National Strategy
 - Assessment of the MTS
 - Maritime Data Coordination and Information Management
 - Navigation Technology Integration & Coordination



Corps Waterfront Development Programs

- General Investigations
 - Specifically Authorized
- Continuing Authorities Program
 - Section 107 for small navigation projects
- Planning Assistance to States



Questions ?

Patricia S. Opheen, P.E.

**U.S. Army Engineer District, Alaska
Chief, Engineering Division
Office 907-753-2662**

patricia.s.opheen@usace.army.mil

© Fednav, Ltd.

BUILDING STRONG®