



U.S. Army Corps
of Engineers
Alaska District

ALASKA BASELINE EROSION ASSESSMENT

Erosion Information Paper - Coldfoot, Alaska

Current as of February 13, 2008

Community Information

Coldfoot, population 13, is on the east bank of the Middle Fork Koyukuk River on the southern slopes of the Brooks Range. It is at Milepost 175 of the Dalton Highway and is 248 miles north of Fairbanks. Coldfoot is in an unorganized borough.

Description of Erosion Problem

The Middle Fork Koyukuk River was on the west side of the floodplain until a major flood event in August of 1994. The Coldfoot airport has been subjected to periodic erosion since that event. The riverbank eroded an estimated 30 feet toward the airport during 2006 and 2007, putting the north end airfield safety zone and some non-permanent structures at risk.

Potential Damages

The airstrip is less than 300 feet from the Middle Fork Koyukuk River and an estimated 3,500 linear feet of the Coldfoot airfield is threatened by erosion. The road on the north end of the airport at one location is only 20 feet from the river's edge. This road is the only access to the river and is a secondary entrance to the west side of the airport property. Stakes have reportedly been placed from the airport to the river's edge to monitor erosion. A private mining claim at the mouth of Slate Creek has lost land and buildings were moved east to avoid erosion damage. The State of Alaska Department of Transportation and Public Facilities (DOT&PF) online *Draft FY 02-08 Rural Airport System Spending Plan* lists \$1,750,000 for Coldfoot airfield erosion control, but funding has not been confirmed.

Photos and Diagrams

A 1991 photo of erosion near the airport provided by DOT&PF is attached. A diagram depicting the linear extent of erosion is attached.

References

DOT/PF. 2006. *Draft FY 02-08 rural airport system AIP spending plan.* Prepared by the Department of Transportation and Public Facilities.

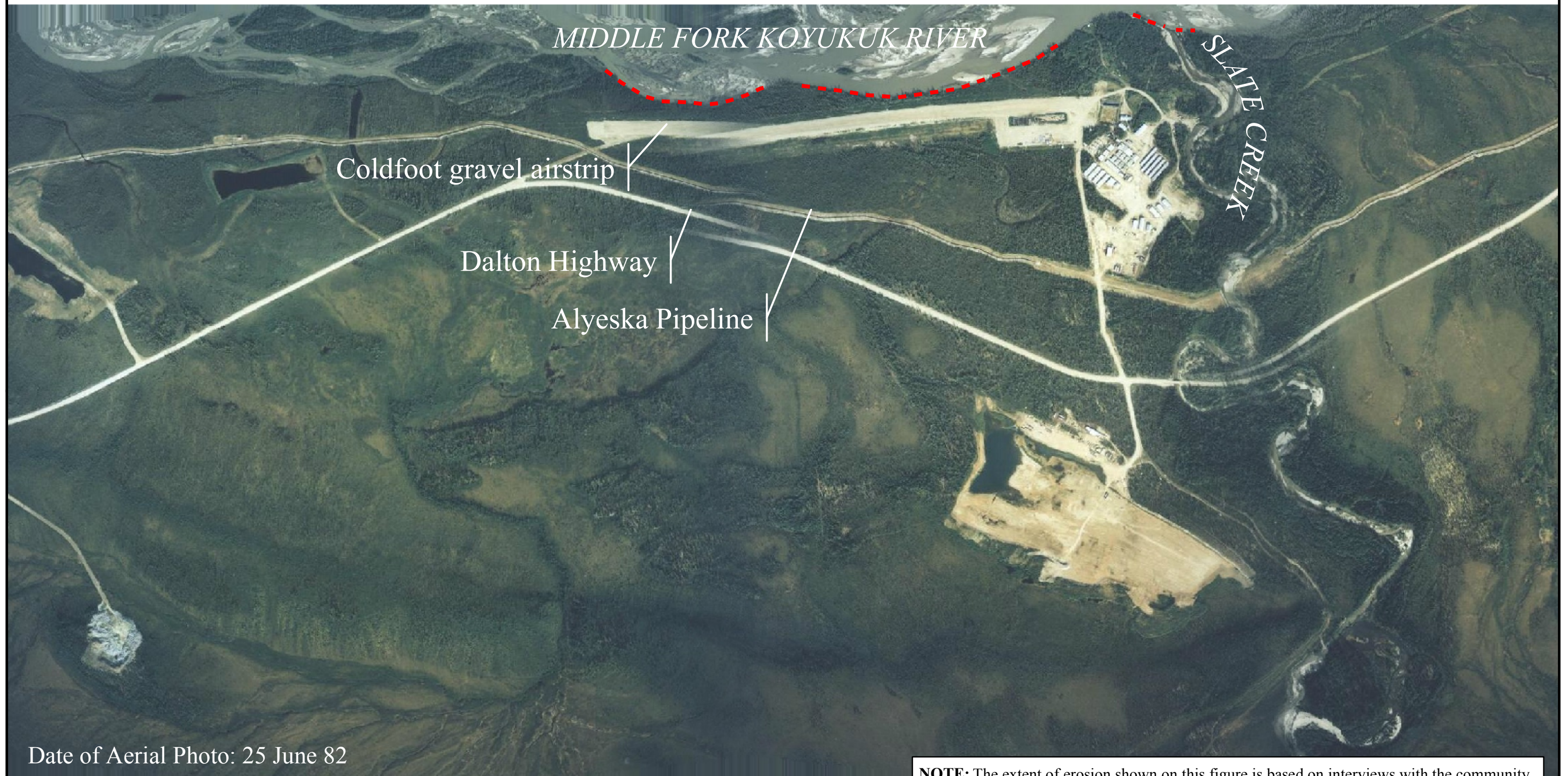
USACE. 2008. *Alaska Community Erosion Survey, OMB approved number 07100001*, expires September 30, 2009 administered to Ken Bear, Department of Transportation and Public Facilities foreman, on February 13, 2008.

Additional Information

This information paper, as well as those for other communities, can be accessed on the internet at www.alaskaerosion.com. For more information please contact the Corps of Engineers, project manager at (907) 753-5694 or email Alaska.Erosion.POA@usace.army.mil



Photo 1: Aerial view of Coldfoot airfield looking west across the middle fork Koyukuk River; Photo courtesy of AK DOT/PF, 1991.

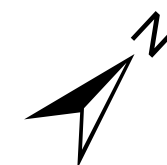


NOTE: The extent of erosion shown on this figure is based on interviews with the community. This data has not been field verified. This figure is only intended to show areas of erosion, not rates or severity of erosion



Alaska District
Corps of Engineers
Civil Works Branch

--- Linear Extent of Erosion



Alaska Baseline Erosion
Coldfoot, Alaska