



U.S. Army Corps
of Engineers
Alaska District

ALASKA BASELINE EROSION ASSESSMENT

Erosion Information Paper - Pilot Point, Alaska

Current as of March 3, 2008

Community Information

Pilot Point, population 61, is on the northern coast of the Alaska Peninsula, on the eastern shore of the Ugashik River where it enters Ugashik Bay, which opens into Bristol Bay. The community is 84 miles south of King Salmon and 368 miles southwest of Anchorage. Pilot Point is incorporated as a 2nd class city in the Lake and Peninsula Borough. Dago Creek is an estuary and small feeder stream to Ugashik Bay. It is used as a small boat harbor with a bulkhead-style dock and boat launch constructed in 1990.

Description of Erosion Problem

The mouth of the Ugashik River as it enters Ugashik Bay at Pilot Point is eroded periodically, primarily by storm surge associated with southwest and westerly storms. Pilot Point has 6- to 8-foot waves during large storms. Major erosion events were recorded in 2005 and 2007. The 2007 event resulted in approximately 15 to 20 feet of erosion. The extent of erosion from the 2005 event was not reported.

According to a 1984 *Pilot Point Dock Feasibility Study*, the beach at the erosion site consists of an upper beach of gravel and sand sloping approximately 10% to a point almost at the face of the dock. The beach seaward of the dock is a mud flat with a slope shallower than 1:50. In the *Feasibility Study* residents reported waves breaking over the top of the dock and high tide storms forcing ice over the dock. Boats weather storms in the mouth of Dago Creek where maximum waves are 3 to 4 feet.

Potential Damages

The community placed large rocks near the sewage leach field to retard erosion. Sand has built up around the rocks and erosion has slowed. The community is interested in placing large rocks in other areas, especially past the bulkhead at Dago Creek, but no action has been initiated.

The road north to Dago Creek and the area between two set net sites washed-out during a fall storm about 5 or 6 years ago. The community could lose boat access to Dago Creek if erosion continues. A washed-out road at another location is about 20 feet from the shoreline and another road is about 40 feet from the shoreline. Erosion in the south beach area is near some set net cabin sites. Roads also are at risk south of the old cannery. Waves and ice driven over the dock during storms have damaged buildings.

Photos and Diagrams

A photo of the erosion threat provided by community is attached. Also, attached is a diagram depicting the linear extent of erosion.

References

ESL. 1982. *Pilot Point*. Environmental Services Limited.

Robertson & Associates. 1984. *Pilot Point Dock Feasibility Study*. Prepared by Robertson & Associates, for the Department of Transportation and Public Facilities.

USACE. 1992. *Community Information Form: Pilot Point*. Alaska District, U.S. Army Corps of Engineers.

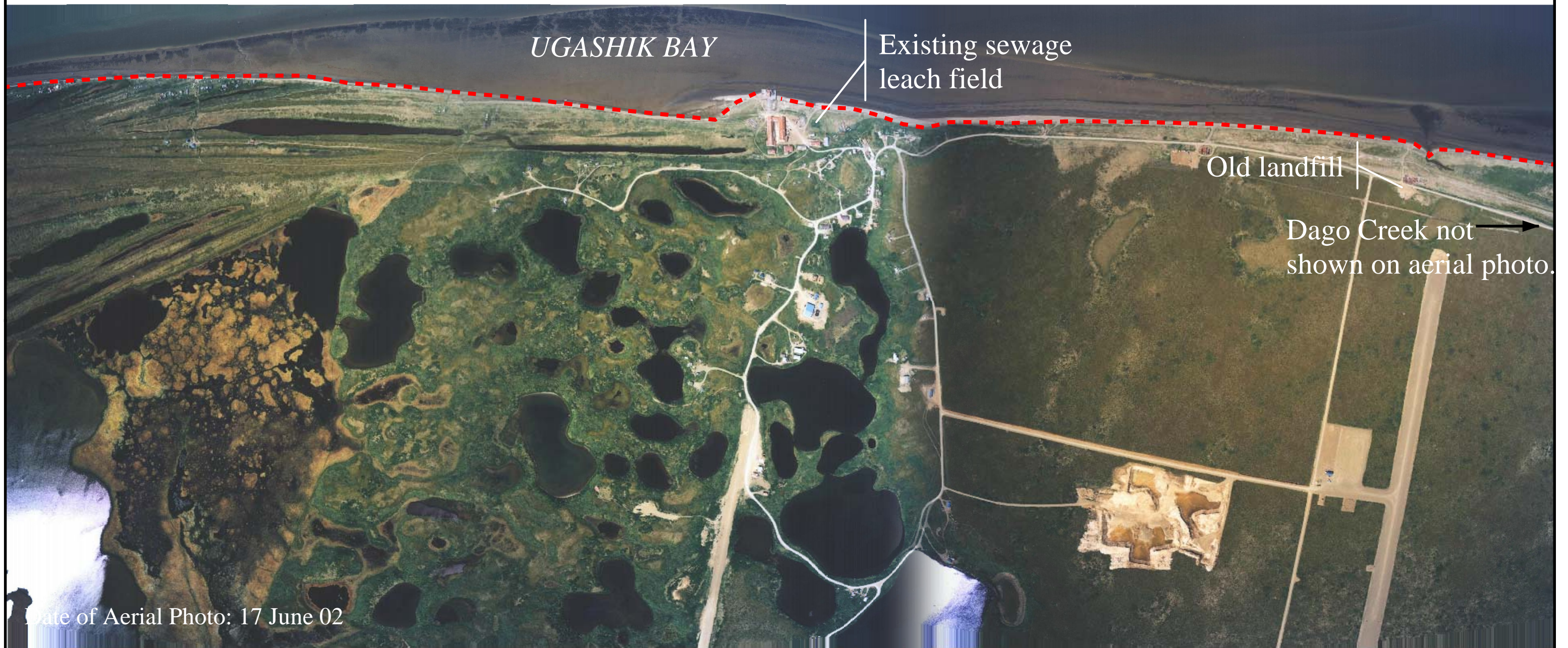
USACE. 2008. *Alaska Community Erosion Survey, OMB approved number 07100001*, expires September 30, 2009 administered to Valerie Jeffries, Pilot Point city manager and Desiree Faye, Pilot Point city council and heavy equipment operator on March 3, 2008.

Additional Information

This information paper, as well as those for other communities, can be accessed on the internet at www.alaskaerosion.com. For more information please contact the Corps of Engineers, project manager at (907) 753-5694 or email Alaska.Erosion.POA@usace.army.mil



Photo 1: Pilot Point Road along Ugashik Bay leading to the bulkhead dock is threatened by erosion, April 2008.



NOTE: The extent of erosion shown on this figure is based on interviews with the community. This data has not been field verified. This figure is only intended to show areas of erosion, not rates or severity of erosion



Alaska District
Corps of Engineers
Civil Works Branch

- - - - Linear Extent of Erosion



Alaska Baseline Erosion
Pilot Point, Alaska