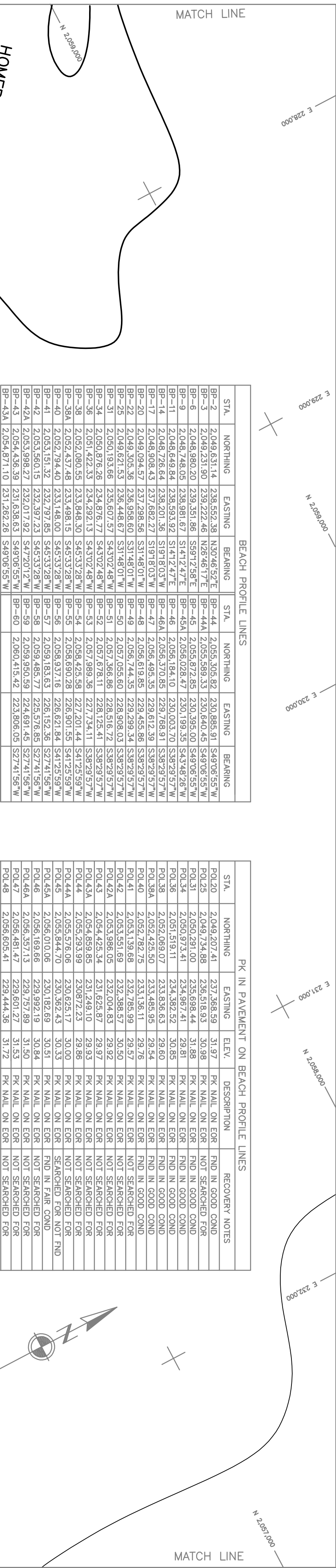
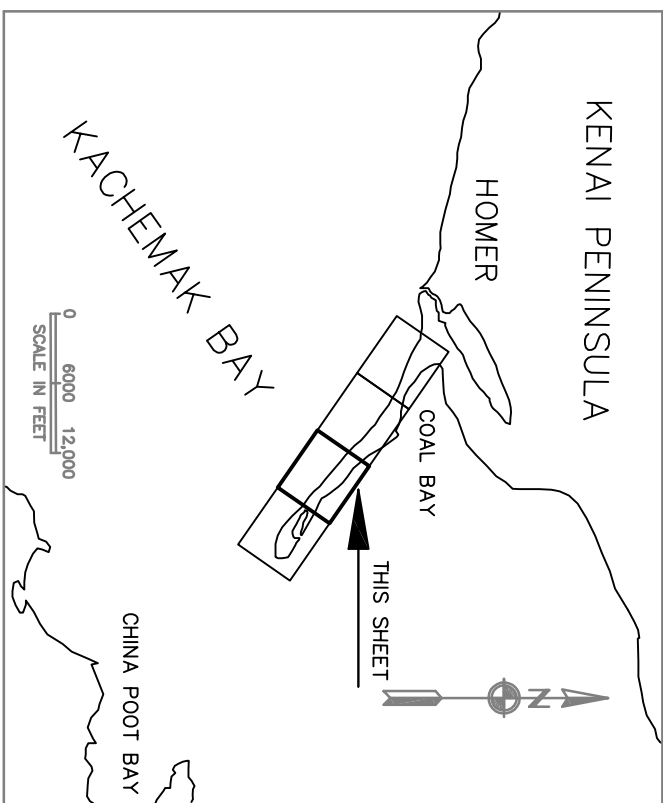


BEACH PROFILE LINES			
STA.	NORTHING	EASTING	BEARING
BP-1	2,048,628.84	235,593.92	S 114° 12' 47"E
BP-2	2,048,628.84	235,607.57	S 114° 02' 48"W
BP-3	2,048,628.84	235,621.22	S 114° 02' 48"W
BP-4	2,048,628.84	235,634.87	S 114° 02' 48"W
BP-5	2,048,628.84	235,648.52	S 114° 02' 48"W
BP-6	2,048,628.84	235,662.17	S 114° 02' 48"W
BP-7	2,048,628.84	235,675.82	S 114° 02' 48"W
BP-8	2,048,628.84	235,689.47	S 114° 02' 48"W
BP-9	2,048,628.84	235,703.12	S 114° 02' 48"W
BP-10	2,048,628.84	235,716.77	S 114° 02' 48"W
BP-11	2,048,628.84	235,730.42	S 114° 02' 48"W
BP-12	2,048,628.84	235,744.07	S 114° 02' 48"W
BP-13	2,048,628.84	235,757.72	S 114° 02' 48"W
BP-14	2,048,628.84	235,771.37	S 114° 02' 48"W
BP-15	2,048,628.84	235,785.02	S 114° 02' 48"W
BP-16	2,048,628.84	235,798.67	S 114° 02' 48"W
BP-17	2,048,628.84	235,812.32	S 114° 02' 48"W
BP-18	2,048,628.84	235,825.97	S 114° 02' 48"W
BP-19	2,048,628.84	235,839.62	S 114° 02' 48"W
BP-20	2,048,628.84	235,853.27	S 114° 02' 48"W
BP-21	2,048,628.84	235,866.92	S 114° 02' 48"W
BP-22	2,048,628.84	235,880.57	S 114° 02' 48"W
BP-23	2,048,628.84	235,894.22	S 114° 02' 48"W
BP-24	2,048,628.84	235,907.87	S 114° 02' 48"W
BP-25	2,048,628.84	235,921.52	S 114° 02' 48"W
BP-26	2,048,628.84	235,935.17	S 114° 02' 48"W
BP-27	2,048,628.84	235,948.82	S 114° 02' 48"W
BP-28	2,048,628.84	235,962.47	S 114° 02' 48"W
BP-29	2,048,628.84	235,976.12	S 114° 02' 48"W
BP-30	2,048,628.84	235,989.77	S 114° 02' 48"W
BP-31	2,048,628.84	236,003.42	S 114° 02' 48"W
BP-32	2,048,628.84	236,017.07	S 114° 02' 48"W
BP-33	2,048,628.84	236,030.72	S 114° 02' 48"W
BP-34	2,048,628.84	236,044.37	S 114° 02' 48"W
BP-35	2,048,628.84	236,058.02	S 114° 02' 48"W
BP-36	2,048,628.84	236,071.67	S 114° 02' 48"W
BP-37	2,048,628.84	236,085.32	S 114° 02' 48"W
BP-38	2,048,628.84	236,098.97	S 114° 02' 48"W
BP-39	2,048,628.84	236,112.62	S 114° 02' 48"W
BP-40	2,048,628.84	236,126.27	S 114° 02' 48"W
BP-41	2,048,628.84	236,139.92	S 114° 02' 48"W
BP-42	2,048,628.84	236,153.57	S 114° 02' 48"W
BP-43	2,048,628.84	236,167.22	S 114° 02' 48"W
BP-44	2,048,628.84	236,180.87	S 114° 02' 48"W
BP-45	2,048,628.84	236,194.52	S 114° 02' 48"W
BP-46	2,048,628.84	236,208.17	S 114° 02' 48"W
BP-47	2,048,628.84	236,221.82	S 114° 02' 48"W
BP-48	2,048,628.84	236,235.47	S 114° 02' 48"W
BP-49	2,048,628.84	236,249.12	S 114° 02' 48"W
BP-50	2,048,628.84	236,262.77	S 114° 02' 48"W
BP-51	2,048,628.84	236,276.42	S 114° 02' 48"W
BP-52	2,048,628.84	236,290.07	S 114° 02' 48"W
BP-53	2,048,628.84	236,303.72	S 114° 02' 48"W
BP-54	2,048,628.84	236,317.37	S 114° 02' 48"W
BP-55	2,048,628.84	236,331.02	S 114° 02' 48"W
BP-56	2,048,628.84	236,344.67	S 114° 02' 48"W
BP-57	2,048,628.84	236,358.32	S 114° 02' 48"W
BP-58	2,048,628.84	236,371.97	S 114° 02' 48"W
BP-59	2,048,628.84	236,385.62	S 114° 02' 48"W
BP-60	2,048,628.84	236,399.27	S 114° 02' 48"W
BP-61	2,048,628.84	236,412.92	S 114° 02' 48"W
BP-62	2,048,628.84	236,426.57	S 114° 02' 48"W
BP-63	2,048,628.84	236,440.22	S 114° 02' 48"W
BP-64	2,048,628.84	236,453.87	S 114° 02' 48"W
BP-65	2,048,628.84	236,467.52	S 114° 02' 48"W
BP-66	2,048,628.84	236,481.17	S 114° 02' 48"W
BP-67	2,048,628.84	236,494.82	S 114° 02' 48"W
BP-68	2,048,628.84	236,508.47	S 114° 02' 48"W
BP-69	2,048,628.84	236,522.12	S 114° 02' 48"W
BP-70	2,048,628.84	236,535.77	S 114° 02' 48"W
BP-71	2,048,628.84	236,549.42	S 114° 02' 48"W
BP-72	2,048,628.84	236,563.07	S 114° 02' 48"W
BP-73	2,048,628.84	236,576.72	S 114° 02' 48"W
BP-74	2,048,628.84	236,590.37	S 114° 02' 48"W
BP-75	2,048,628.84	236,604.02	S 114° 02' 48"W
BP-76	2,048,628.84	236,617.67	S 114° 02' 48"W
BP-77	2,048,628.84	236,631.32	S 114° 02' 48"W
BP-78	2,048,628.84	236,644.97	S 114° 02' 48"W
BP-79	2,048,628.84	236,658.62	S 114° 02' 48"W
BP-80	2,048,628.84	236,672.27	S 114° 02' 48"W
BP-81	2,048,628.84	236,685.92	S 114° 02' 48"W
BP-82	2,048,628.84	236,699.57	S 114° 02' 48"W
BP-83	2,048,628.84	236,713.22	S 114° 02' 48"W
BP-84	2,048,628.84	236,726.87	S 114° 02' 48"W
BP-85	2,048,628.84	236,740.52	S 114° 02' 48"W
BP-86	2,048,628.84	236,754.17	S 114° 02' 48"W
BP-87	2,048,628.84	236,767.82	S 114° 02' 48"W
BP-88	2,048,628.84	236,781.47	S 114° 02' 48"W
BP-89	2,048,628.84	236,795.12	S 114° 02' 48"W
BP-90	2,048,628.84	236,808.77	S 114° 02' 48"W
BP-91	2,048,628.84	236,822.42	S 114° 02' 48"W
BP-92	2,048,628.84	236,836.07	S 114° 02' 48"W
BP-93	2,048,628.84	236,849.72	S 114° 02' 48"W
BP-94	2,048,628.84	236,863.37	S 114° 02' 48"W
BP-95	2,048,628.84	236,877.02	S 114° 02' 48"W
BP-96	2,048,628.84	236,890.67	S 114° 02' 48"W
BP-97	2,048,628.84	236,904.32	S 114° 02' 48"W
BP-98	2,048,628.84	236,917.97	S 114° 02' 48"W
BP-99	2,048,628.84	236,931.62	S 114° 02' 48"W
BP-100	2,048,628.84	236,945.27	S 114° 02' 48"W
BP-101	2,048,628.84	236,958.92	S 114° 02' 48"W
BP-102	2,048,628.84	236,972.57	S 114° 02' 48"W
BP-103	2,048,628.84	236,986.22	S 114° 02' 48"W
BP-104	2,048,628.84	236,999.87	S 114° 02' 48"W
BP-105	2,048,628.84	237,013.52	S 114° 02' 48"W
BP-106	2,048,628.84	237,027.17	S 114° 02' 48"W
BP-107	2,048,628.84	237,040.82	S 114° 02' 48"W
BP-108	2,048,628.84	237,054.47	S 114° 02' 48"W
BP-109	2,048,628.84	237,068.12	S 114° 02' 48"W
BP-110	2,048,628.84	237,081.77	S 114° 02' 48"W
BP-111	2,048,628.84	237,095.42	S 114° 02' 48"W
BP-112	2,048,628.84	237,109.07	S 114° 02' 48"W
BP-113	2,048,628.84	237,122.72	S 114° 02' 48"W
BP-114	2,048,628.84	237,136.37	S 114° 02' 48"W
BP-115	2,048,628.84	237,149.92	S 114° 02' 48"W
BP-116	2,048,628.84	237,163.57	S 114° 02' 48"W
BP-117	2,048,628.84	237,177.22	S 114° 02' 48"W
BP-118	2,048,628.84	237,190.87	S 114° 02' 48"W
BP-119	2,048,628.84	237,204.52	S 114° 02' 48"W
BP-120	2,048,628.84	237,218.17	S 114° 02' 48"W
BP-121	2,048,628.84	237,231.82	S 114° 02' 48"W
BP-122	2,048,628.84	237,245.47	S 114° 02' 48"W
BP-123	2,048,628.84	237,259.12	S 114° 02' 48"W
BP-124	2,048,628.84	237,272.77	S 114° 02' 48"W
BP-125	2,048,628.84	237,286.42	S 114° 02' 48"W
BP-126	2,048,628.84	237,299.97	S 114° 02' 48"W
BP-127	2,048,628.84	237,313.62	S 114° 02' 48"W
BP-128	2,048,628.84	237,327.27	S 114° 02' 48"W
BP-129	2,048,628.84	237,340.92	S 114° 02' 48"W
BP-130	2,048,628.84	237,354.57	S 114° 02' 48"W
BP-131	2,048,628.84	237,368.22	S 114° 02' 48"W
BP-132	2,048,628.84	237,381.87	S 114° 02' 48"W
BP-133	2,048,628.84	237,395.52	S 114° 02' 48"W
BP-134	2,048,628.84	237,409.17	S 114° 02' 48"W
BP-135	2,048,628.84	237,422.82	S 114° 02' 48"W
BP-136	2,048,628.84	237,436.47	S 114° 02' 48"W
BP-137	2,048,628.84	237,450.12	S 114° 02' 48"W
BP-138	2,048,628.84	237,463.77	S 114° 02' 48"W
BP-139	2,048,628.84	237,477.42	S 114° 02' 48"W
BP-140	2,048,628.84	237,491.07	S 114° 02' 48"W
BP-141	2,048,628.84	237,504.72	S 114° 02' 48"W
BP-142	2,048,628.84	237,518.37	S 114° 02' 48"W
BP-143	2,048,628.84	237,532.02	S 114° 02' 48"W
BP-144	2,048,628.84	237,545.67	S 114° 02' 48"W
BP-145	2,048,628.84	237,559.32	S 114° 02' 48"W
BP-146	2,048,628.84	237,572.97	S 114° 02' 48"W
BP-147	2,048,628.84	237,586.62	S 114° 02' 48"W
BP-148	2,048,628.84	237,600.27	S 114° 02' 48"W
BP-149	2,048,628.84	237,613.92	S 114° 02' 48"W
BP-150	2,048,628.84	237,627.57	S 114° 02' 48"W
BP-151	2,048,628.84	237,641.22	S 114° 02' 48"W
BP-152	2,048,628.84	237,654.87	S 114° 02' 48"W
BP-153	2,048,628.84	237,668.52	S 114° 02' 48"W
BP-154	2,048,628.84	237,682.17	S 114° 02' 48"W
BP-155	2,048,628.84	237,695.82	S 114° 02' 48"W
BP-156	2,048,628.84	237,709.47	S 114° 02' 48"W
BP-157	2,048,628.84	237,723.12	S 114° 02' 48"W
BP-158	2,048,628.84	237,736.77	S 114° 02' 48"W
BP-159	2,048,628.84	237,750.42	S 114° 02' 48"W
BP-160	2,048,628.84	237,764.07	S 114° 02' 48"W
BP-161	2,048,628.84	237,777.72	S 114° 02' 48"W
BP-162	2,048,628.84	237,791.37	S 114° 02' 48"W
BP-163	2,048,628.84	237,805.02	S 114° 02' 48"W
BP-164	2,048,628.84	237,818.67	S 114° 02' 48"W
BP-165	2,048,628.84	237,832.32	S 114° 02' 48"W
BP-166	2,048,628.84	237,845.97	S 114° 02' 48"W
BP-167	2,048,628.84	237,859.62	S 114° 02' 48"W
BP-168	2,048,628.84	237,873.27	S 114° 02' 48"W
BP-169	2,048,628.84	237,886.92	S 114° 02' 48"W
BP-170	2,048,628.84	237,900.57	S 114° 02' 48"W
BP-171	2,048,628.84	237,914.22	S 114° 02' 48"W
BP-172	2,048,628.84	237,927.87	S 114° 02' 48"W
BP-173	2,048,628.84	237,941.52	S 114° 02' 48"W
BP-174	2,048,628.84	237,955.17	S 114° 02' 48"W
BP-175	2,048,628.84	237,968.82	S 114° 02' 48"W
BP-176	2,048,628.84	237,982.47	S 114° 02' 48"W
BP-177	2,048,628.84	237,996.12	S 114° 02' 48"W
BP-178	2,048,628.84	238,009.77	S 114° 02' 48"W
BP-179	2,048,628.84	238,023.42	S 114° 02' 48"W
BP-180	2,048,628.84	238,037.07	S 114° 02' 48"W
BP-181	2,048,628.84	238,050.72	S 114° 02' 48"W
BP-182	2,048,628.84	238,064.37	S 114° 02' 48"W
BP-183	2,048,628.84	238,078.02	S 114° 02' 48"W
BP-184	2,048,628.84	238,091.67	S 114° 02' 48"W
BP-185	2,048,628.84	238,105.32	S 114° 02' 48"W
BP-186	2,048,628.84	238,118.97	S 114° 02' 48"W
BP-187	2,048,628.84	238,132.62	S 114° 02' 48"W
BP-188	2,048,628.84	238,146.27	S 114° 02' 48"W
BP-189	2,048,628.84	238,159.92	S 114° 02' 48"W
BP-190	2,048,628.84	238,173.57	S 114° 02' 48"W
BP-191	2,048,628.84	238,187.22	S 114° 02'



BEACH PROFILE LINES							
STA.	NORTHING	EASTING	BEARING	STA.	NORTHING	EASTING	BEARING
BP-2	2,049,631.14	2,38,552.38	N30°46'52"E	BP-44	2,055,305.82	230,885.81	S49°06'55"W
BP-3	2,049,231.90	2,39,222.46	N28°46'17"E	BP-45	2,055,588.33	230,640.45	S49°06'55"W
BP-6	2,048,980.20	2,39,351.88	S59°12'59"E	BP-46	2,055,872.85	230,395.00	S49°06'55"W
BP-8	2,049,231.90	2,39,222.46	N28°46'17"E	BP-47	2,056,157.37	230,149.64	S49°06'55"W
BP-11	2,048,648.84	2,38,552.38	S14°12'47"E	BP-48	2,056,441.89	229,900.00	S49°06'55"W
BP-14	2,048,726.64	2,38,201.36	S19°18'03"W	BP-49	2,056,726.39	229,650.00	S49°06'55"W
BP-17	2,048,908.43	2,37,682.27	S19°18'03"W	BP-50	2,056,995.93	229,395.00	S49°06'55"W
BP-20	2,049,094.57	2,37,288.58	S31°48'01"W	BP-51	2,057,280.47	229,140.00	S49°06'55"W
BP-23	2,048,552.38	2,38,552.38	S31°48'01"W	BP-52	2,057,564.95	228,885.81	S49°06'55"W
BP-25	2,048,552.38	2,38,552.38	S31°48'01"W	BP-53	2,057,849.43	228,631.14	S49°06'55"W
BP-28	2,048,552.38	2,38,552.38	S31°48'01"W	BP-54	2,058,133.91	228,376.64	S49°06'55"W
BP-31	2,050,193.66	2,35,607.57	S43°02'48"W	BP-55	2,058,418.39	228,122.17	S49°06'55"W
BP-34	2,050,478.26	2,34,876.77	S43°02'48"W	BP-56	2,058,702.85	227,867.71	S49°06'55"W
BP-36	2,050,762.31	2,34,146.00	S43°02'48"W	BP-57	2,058,987.33	227,613.25	S49°06'55"W
BP-39	2,051,046.81	2,33,415.52	S43°02'48"W	BP-58	2,059,271.81	227,358.79	S49°06'55"W
BP-42	2,051,331.32	2,32,685.81	S43°02'48"W	BP-59	2,059,556.29	227,104.33	S49°06'55"W
BP-45	2,051,615.83	2,31,955.81	S43°02'48"W	BP-60	2,059,840.77	226,849.87	S49°06'55"W
BP-48	2,051,900.33	2,31,225.81	S43°02'48"W	BP-61	2,060,125.25	226,595.41	S49°06'55"W
BP-51	2,052,184.81	2,30,495.33	S43°02'48"W	BP-62	2,060,410.73	226,340.95	S49°06'55"W
BP-54	2,052,469.33	2,29,765.81	S43°02'48"W	BP-63	2,060,695.21	226,086.49	S49°06'55"W
BP-57	2,052,753.81	2,29,036.33	S43°02'48"W	BP-64	2,060,979.69	225,832.03	S49°06'55"W
BP-60	2,053,038.33	2,28,306.81	S43°02'48"W	BP-65	2,061,264.17	225,577.57	S49°06'55"W
BP-63	2,053,322.81	2,27,577.33	S43°02'48"W	BP-66	2,061,548.65	225,323.11	S49°06'55"W
BP-66	2,053,607.33	2,26,847.81	S43°02'48"W	BP-67	2,061,832.11	225,068.65	S49°06'55"W
BP-69	2,053,891.81	2,26,118.33	S43°02'48"W	BP-70	2,062,116.59	224,814.17	S49°06'55"W
BP-72	2,054,176.33	2,25,388.81	S43°02'48"W	BP-71	2,062,400.73	224,559.71	S49°06'55"W
BP-75	2,054,460.81	2,24,659.33	S43°02'48"W	BP-72	2,062,685.21	224,305.25	S49°06'55"W
BP-78	2,054,745.29	2,23,929.81	S43°02'48"W	BP-73	2,062,969.69	224,050.79	S49°06'55"W
BP-81	2,055,029.77	2,23,200.33	S43°02'48"W	BP-74	2,063,254.17	223,796.33	S49°06'55"W
BP-84	2,055,314.25	2,22,470.81	S43°02'48"W	BP-75	2,063,538.65	223,541.87	S49°06'55"W
BP-87	2,055,598.73	2,21,741.33	S43°02'48"W	BP-76	2,063,823.11	223,287.41	S49°06'55"W
BP-90	2,055,883.21	2,21,011.81	S43°02'48"W	BP-77	2,064,107.69	223,032.95	S49°06'55"W
BP-93	2,056,167.69	2,20,282.33	S43°02'48"W	BP-78	2,064,392.17	222,778.49	S49°06'55"W
BP-96	2,056,452.17	2,20,000.00	S43°02'48"W	BP-79	2,064,676.65	222,524.03	S49°06'55"W
BP-99	2,056,736.65	2,19,270.51	S43°02'48"W	BP-80	2,064,961.13	222,269.57	S49°06'55"W
BP-102	2,057,021.13	2,18,541.03	S43°02'48"W	BP-81	2,065,245.61	222,015.11	S49°06'55"W
BP-105	2,057,305.61	2,17,811.55	S43°02'48"W	BP-82	2,065,530.09	221,760.65	S49°06'55"W
BP-108	2,057,590.09	2,17,082.07	S43°02'48"W	BP-83	2,065,814.57	221,506.19	S49°06'55"W
BP-111	2,057,874.57	2,16,352.59	S43°02'48"W	BP-84	2,066,099.05	221,251.73	S49°06'55"W
BP-114	2,058,158.95	2,15,623.11	S43°02'48"W	BP-85	2,066,383.53	221,000.00	S49°06'55"W
BP-117	2,058,443.43	2,14,893.63	S43°02'48"W	BP-86	2,066,667.95	220,745.54	S49°06'55"W
BP-120	2,058,727.91	2,14,164.15	S43°02'48"W	BP-87	2,066,952.43	220,491.08	S49°06'55"W
BP-123	2,059,012.39	2,13,434.67	S43°02'48"W	BP-88	2,067,236.91	220,236.62	S49°06'55"W
BP-126	2,059,296.81	2,12,705.19	S43°02'48"W	BP-89	2,067,521.39	220,000.00	S49°06'55"W
BP-129	2,059,581.29	2,11,975.71	S43°02'48"W	BP-90	2,067,805.87	219,745.54	S49°06'55"W
BP-132	2,059,865.77	2,11,246.23	S43°02'48"W	BP-91	2,068,090.35	219,491.08	S49°06'55"W
BP-135	2,060,150.25	2,10,516.75	S43°02'48"W	BP-92	2,068,374.83	219,236.62	S49°06'55"W
BP-138	2,060,434.73	2,09,787.27	S43°02'48"W	BP-93	2,068,659.31	218,982.16	S49°06'55"W
BP-141	2,060,719.21	2,09,057.79	S43°02'48"W	BP-94	2,068,943.79	218,727.70	S49°06'55"W
BP-144	2,061,003.69	2,08,328.31	S43°02'48"W	BP-95	2,069,228.27	218,473.24	S49°06'55"W
BP-147	2,061,288.17	2,07,598.83	S43°02'48"W	BP-96	2,069,512.75	218,218.78	S49°06'55"W
BP-150	2,061,572.65	2,06,869.35	S43°02'48"W	BP-97	2,069,797.23	217,964.32	S49°06'55"W
BP-153	2,061,857.13	2,06,139.87	S43°02'48"W	BP-98	2,070,081.71	217,709.86	S49°06'55"W
BP-156	2,062,141.61	2,05,410.39	S43°02'48"W	BP-99	2,070,366.19	217,455.40	S49°06'55"W
BP-159	2,062,426.09	2,04,680.91	S43°02'48"W	BP-100	2,070,650.67	217,200.94	S49°06'55"W
BP-162	2,062,710.57	2,03,951.43	S43°02'48"W	BP-101	2,070,935.15	216,946.48	S49°06'55"W
BP-165	2,062,995.05	2,03,221.95	S43°02'48"W	BP-102	2,071,219.63	216,692.02	S49°06'55"W
BP-168	2,063,279.53	2,02,492.47	S43°02'48"W	BP-103	2,071,504.11	216,437.56	S49°06'55"W
BP-171	2,063,564.01	2,01,762.99	S43°02'48"W	BP-104	2,071,788.59	216,183.10	S49°06'55"W
BP-174	2,063,848.49	2,01,033.51	S43°02'48"W	BP-105	2,072,073.07	215,928.64	S49°06'55"W
BP-177	2,064,132.97	2,00,304.03	S43°02'48"W	BP-106	2,072,357.55	215,674.18	S49°06'55"W
BP-180	2,064,417.45	199,574.55	S43°02'48"W	BP-107	2,072,642.03	215,419.72	S49°06'55"W
BP-183	2,064,701.93	198,845.07	S43°02'48"W	BP-108	2,072,926.51	215,165.26	S49°06'55"W
BP-186	2,064,986.41	198,115.59	S43°02'48"W	BP-109	2,073,210.99	214,910.80	S49°06'55"W
BP-189	2,065,270.89	197,386.11	S43°02'48"W	BP-110	2,073,495.47	214,656.34	S49°06'55"W
BP-192	2,065,555.37	196,656.63	S43°02'48"W	BP-111	2,073,779.95	214,401.88	S49°06'55"W
BP-195	2,065,839.85	195,927.15	S43°02'48"W	BP-112	2,074,064.43	214,147.42	S49°06'55"W
BP-198	2,066,124.33	195,197.67	S43°02'48"W	BP-113	2,074,348.91	213,892.96	S49°06'55"W
BP-201	2,066,408.81	194,468.19	S43°02'48"W	BP-114	2,074,633.39	213,638.50	S49°06'55"W
BP-204	2,066,693.29	193,738.71	S43°02'48"W	BP-115	2,074,917.87	213,384.04	S49°06'55"W
BP-207	2,066,977.77	193,009.23	S43°02'48"W	BP-116	2,075,202.35	213,129.58	S49°06'55"W
BP-210	2,067,262.25	192,279.75	S43°02'48"W	BP-117	2,075,486.83	212,875.12	S49°06'55"W
BP-213	2,067,546.73	191,550.27	S43°02'48"W	BP-118	2,075,771.31	212,620.66	S49°06'55"W
BP-216	2,067,831.21	190,820.79	S43°02'48"W	BP-119	2,076,055.79	212,366.20	S49°06'55"W
BP-219	2,068,115.69	190,091.31	S43°02'48"W	BP-120	2,076,340.27	212,111.74	S49°06'55"W
BP-222	2,068,400.17	189,361.83	S43°02'48"W	BP-121	2,076,624.75	211,857.28	S49°06'55"W
BP-225	2,068,684.65	188,632.35	S43°02'48"W	BP-122	2,076,909.23	211,602.82	S49°06'55"W
BP-228	2,068,969.13	187,902.87	S43°02'48"W	BP-123	2,077,193.71	211,348.36	S49°06'55"W
BP-231	2,069,253.61	187,173.39	S43°02'48"W	BP-124	2,077,478.19	211,093.90	S49°06'55"W
BP-234	2,069,538.09	186,443.91	S43°02'48"W	BP-125	2,077,762.67	210,839.44	S49°06'55"W
BP-237	2,069,822.57	185,714.43	S43°02'48"W	BP-126	2,078,047.15	210,584.98	S49°06'55"W
BP-240	2,070,107.05	184,984.95	S43°02'48"W	BP-127	2,078,331.63	210,330.52	S49°06'55"W
BP-243	2,070,391.53	184,255.47	S43°02'48"W	BP-128	2,078,616.11	210,076.06	S49°06'55"W
BP-246	2,070,676.01	183,525.99	S43°02'48"W	BP-129	2,078,900.59	209,821.60	S49°06'55"W
BP-249	2,070,960.49	182,796.51	S43°02'48"W	BP-130	2,079,185.07	209,567.14	S49°06'55"W
BP-252	2,071,244.97	182,067.03	S43°02'48"W	BP-131	2,079,469.55	209,312.68	S49°06'55"W
BP-255	2,071,529.45	181,337.55	S43°02'48"W	BP-132	2,079,754.03	209,058.22	S49°06'55"W
BP-258	2,071,813.93	180,608.07	S43°02'48"W	BP-133	2,080,038.51	208,803.76	S49°06'55"W
BP-261	2,072,098.41	179,878.59	S43°02'48"W	BP-134	2,080,322.99	208,549.30	S49°06'55"W
BP-264	2,072,382.89	179,149.11	S43°02'48"W	BP-135	2,080,607.47	208,294.84	S49°06'55"W
BP-267	2,072,667.37	178,419.63	S43°02'48"W	BP-136	2,080,891.95	208,040.38	S49°06'55"W
BP-270	2,072,951.85	177,690.15	S43°02'48"W	BP-137	2,081,176.43	207,785.92	S49°06'55"W
BP-273	2,073,236.33	176,960.67	S43°02'48"W	BP-138	2,081,460.91	207,531.46	S49°06'55"W
BP-276	2,073,520.81	176,231.19	S43°02'48"W	BP-139	2,081,745.39	207,276.90	S49°06'55"W
BP-279	2,073,805.29	175,501.71	S43°02'48"W	BP-140	2,082,029.87	207,022.44	S49°06'55"W
BP-282	2,074,089.77	174,772.23	S43°02'48"W	BP-141	2,082,314.35	206,767.98	S49°06'55"W
BP-285	2,074,374.25	174,042.75	S43°02'48"W	BP-142	2,082,598.83	206,513.52	S49°06'55"W
BP-288	2,074,658.73	173,313.27	S43°02'48"W	BP-143	2,082,883.31	206,259.06	S49°06'55"W
BP-291	2,074,943.21	172,583.79	S43°02'48"W	BP-144	2,083,167.79	206,004.60	S49°06'55"W
BP-294	2,075,227.69	171,854.31	S43°02'48"W	BP-145	2,083,452.27	205,750.14	S49°06'55"W
BP-297	2,075,512.17	171,124.83	S43°02'48"W	BP-146	2,083,736.75	205,495.68	S49°06'55"W
BP-300	2,075,796.65	170,395.35	S43°02'48"W	BP-147	2,084,021.23	205,241.22	S49°06'55"W
BP-303	2,076,081.13	170,000.00	S43°02'48"W	BP-148	2,084,305.71	204,986.76	S49°06'55"W
BP-306	2,076,365.61	169,700.00	S43°02'48"W	BP-149	2,084,590.19	204,732.30	S49°06'5



1. HORIZONTAL COORDINATE IS ALGSA SURVEY PLANE, ZONE 4, NAD27, IN U.S. SURVEY FEET
N 209°1'36"E, DISTANCE = 250.00(92.58) E, Z25:16x31 AND ADDRESS AS
N 209°1'36"E, DISTANCE = 1.99(5.50) S, Z25:16x31
2. VERTICAL COORDINATE IS IN FEET BASED ON MEAN LOWER LOW WATER (MLLW-0) OF A HIGH
PIPE, LOCATED NEAR THE S. END OF HOOPER STREET, 1.5 NORTH OF A LARGE OIL TANK,
IN ORDER TO MAINTAIN CONSISTENCY, THE OLD VALUE OF 25.33' WAS TAKEN.
3. COORDINATES AND BEARINGS FOR "TEACH PEOPLE LINE" (BP) BASLINE STATIONS
ORIGINATED FROM THE ALASKA DEPARTMENT OF TRANSPORTATION'S PUBLIC FACILITIES
DIVISION, 1985. THE BEARING OF THIS LINE IS 100°00'00". THE BEARING OF THE
RESIDUALING AND SHOW PLOTTING ACTIVITIES, MANY OF THESE BP LINES WERE OBSERVED
WITHIN ONE FOOT OF THE EDGE OF ASPHALT, BY THE USACE IN 1985, DUE TO ROAD
THROW SHOT FROSTION STUDY - CONDITION SURVEY OF AUGUST 26-30, 1986.
4. FIELD SURVEY WAS CONDUCTED ON SEPTEMBER 17-19, 2001. RECOVERED POINT NAMES WE
SURVEYED USING "KOLMATIC CONTROL POINT" GPS METHODS. TOPOGRAPHIC DATA WAS
OBTAINED FROM THE "ALASKA STATE DATA CENTER" (ASDC). THE DATA WAS NOT
ANY OUTLITTED WITH A TRIMBLE 4600SERIES RECEIVER SET ON "TOLL 1984" OVER TIME ALTITUDE
BACKSCATTER FROM A TRIMBLE 4600SERIES RECEIVER SET ON "TOLL 1984" OVER TIME ALTITUDE
DATA COLLECTION WERE PERFORMED USING HYPOACK INTERACTIVE SOFTWARE
COLLECTABLE TO THE ANY WHERE SURVEYED USING A TRIMBLE RFX BACKPACK AND TSC1 DATUM
COLLECTOR.
5. THIS DRAWING INDICATES GENERAL CONDITIONS AT THE TIME OF SURVEY.
ALL TOPOGRAPHY IS IN FEET, REFERENCEING MEAN LOWER LOW WATER (MLW = 0.0').

[illegible]

STA.	PK IN PAWMENT ON			DESCRIPTION	RECOVERY NOTES
	NORTHING	EASTING	ELEV.		
P0.00	2,049,207.41	226,748.59	51.97	PK NAL ON TOP	IND IN GOOD COND
P0.05	2,049,734.88	237,816.89	51.97	PK NAL ON TOP	NOT SCAFFOLD FOR
P0.10	2,050,291.00	235,989.44	51.88	PK NAL ON TOP	IND IN GOOD COND
P0.15	2,051,911.31	235,989.44	51.88	PK NAL ON TOP	IND IN GOOD COND
P0.36	2,052,987.51	234,987.52	52.55	PK NAL ON TOP	IND IN GOOD COND
P0.38	2,052,686.07	233,986.63	52.60	PK NAL ON TOP	IND IN GOOD COND
P0.39A	2,052,425.90	233,985.95	52.64	PK NAL ON TOP	IND IN GOOD COND
P0.42	2,052,782.79	233,986.11	52.75	PK NAL ON TOP	IND IN GOOD COND
P0.42	2,053,551.99	232,988.57	52.95	PK NAL ON TOP	NOT SCAFFOLD FOR
P0.42	2,053,551.99	232,988.57	52.95	PK NAL ON TOP	NOT SCAFFOLD FOR
P0.42A	2,053,926.05	232,982.03	52.92	PK NAL ON TOP	NOT SCAFFOLD FOR
P0.43	2,054,424.93	231,925.87	52.93	PK NAL ON TOP	NOT SCAFFOLD FOR
P0.44	2,055,658.85	231,949.10	52.93	PK NAL ON TOP	NOT SCAFFOLD FOR
P0.44A	2,055,658.85	231,949.10	52.93	PK NAL ON TOP	NOT SCAFFOLD FOR
P0.44A	2,055,658.85	230,925.17	53.00	PK NAL ON TOP	NOT SCAFFOLD FOR
P0.45	2,055,914.70	230,925.43	53.03	PK NAL ON TOP	SCAFFOLD FOR NOT IND
P0.45A	2,055,914.70	230,925.69	53.03	PK NAL ON TOP	IND IN FAIR COND
P0.46	2,056,000.00	229,927.81	53.00	PK NAL ON TOP	NOT SCAFFOLD FOR
P0.46A	2,056,000.00	229,927.81	53.00	PK NAL ON TOP	NOT SCAFFOLD FOR
P0.47	2,056,481.47	229,921.07	53.15	PK NAL ON TOP	NOT SCAFFOLD FOR
P0.48	2,056,605.41	229,944.36	53.12	PK NAL ON TOP	NOT SCAFFOLD FOR
P0.49	2,056,930.36	229,930.51	53.21	PK NAL ON TOP	NOT SCAFFOLD FOR
P0.52	2,057,664.62	228,914.81	53.64	PK NAL ON TOP	NOT SCAFFOLD FOR
P0.56	2,058,917.05	226,004.08	53.84	PK NAL ON TOP	IND IN GOOD COND

CONTRACT NO. <u>DAW83-01-0-D-0001</u>	
CONTRACTOR <u>TERRA SURVEYS LLC</u>	
CITY <u>PAUMotu</u>	STATE <u>ALASKA</u>
ALASKA DISTRICT CORPS OF ENGINEERS ANCHORAGE, ALASKA	
SURVEYED: BY <u>KOW</u>	<u>HOMER, ALASKA</u>
DATE <u>12/24/01</u>	

STUDY

SEPTEMBER 17-19, 2000

RECOMMENDED:

SURVEY NO.

SCALE: 1" = 200'

1942-01

SHEET

3

OF

