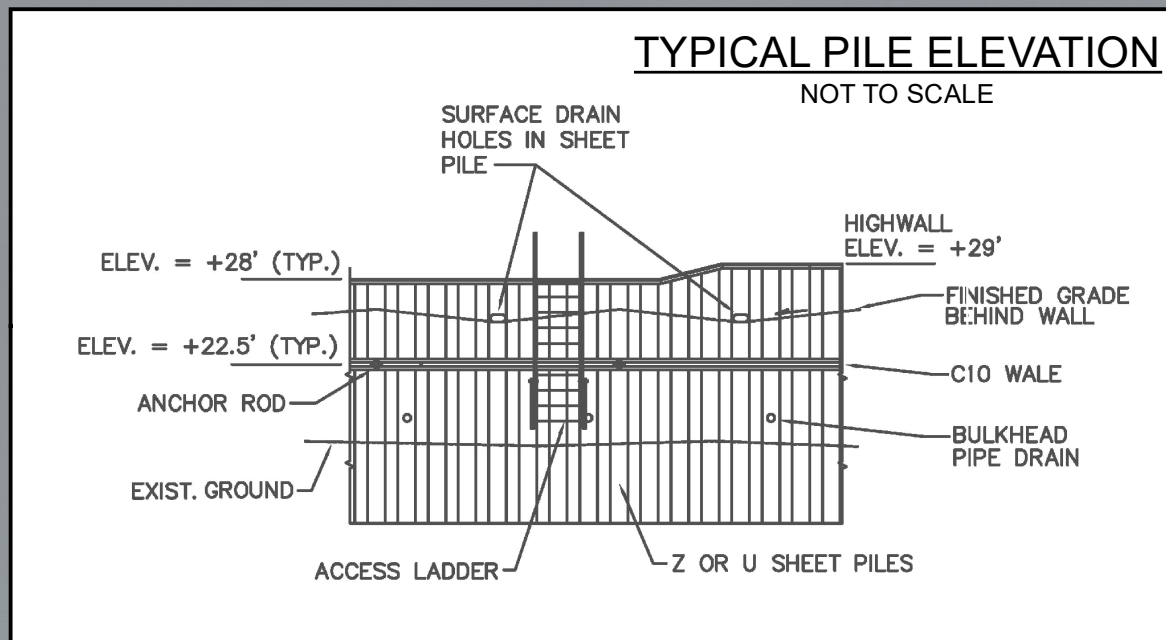
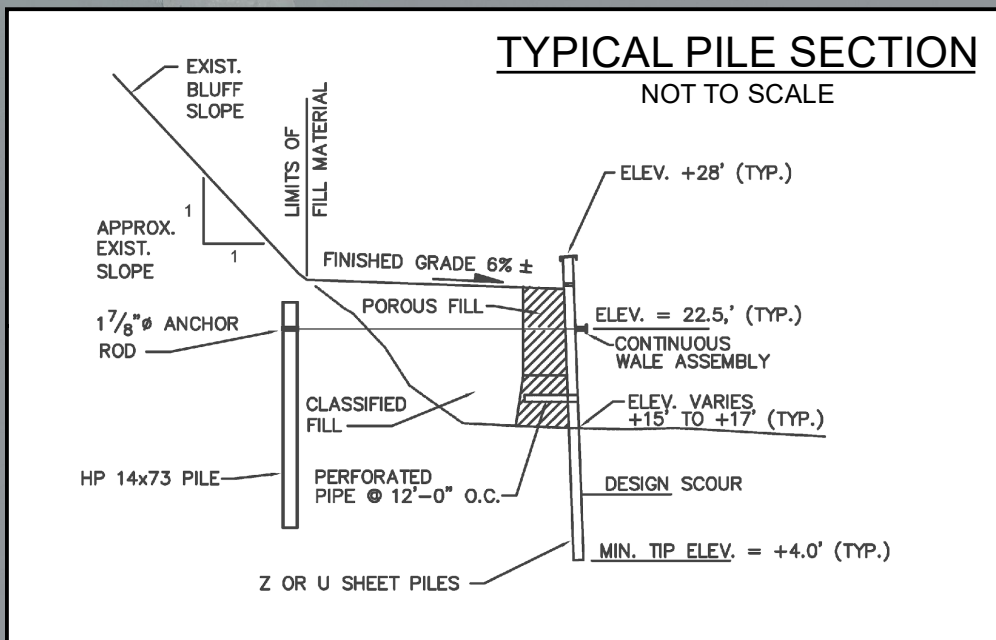




RIPRAP REVETMENT
LENGTH 600'

H-PILE SUPPORTED SHEETPILE BULKHEAD
LENGTH 1625'



NUSHAGAK RIVER



1:5,000

DILLINGHAM BANK PROTECTION

DILLINGHAM, ALASKA



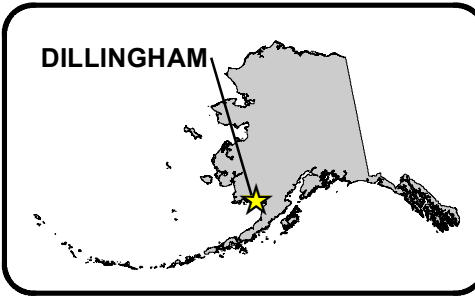
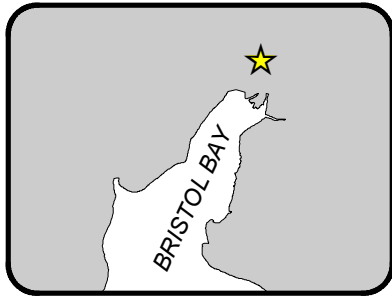
US Army Corps of Engineers Alaska District

NOTES:

1. THIS LOCALITY IS SHOWN ON USGS QUAD SHEET DILLINGHAM A-7
2. CURRENT SURVEY INFORMATION FOR THIS PROJECT AT www.poa.usace.army.mil/About/Offices/ConstructionOperations/RiversandHarbors.aspx

MAP DATE: 2016SEP IMAGERY DATE: 2016AUG27

Imagery Credits: National Geographic, ESRI, DeLorme, NAVTEQ, UNEP-WCMC, USGS, NASA, METI, NRCAN, GEBCO, NOAA, IPC, DigitalGlobe, GeoEye, Earthstar Geographics, SIO



Accession Number: The United States Government furnishes these data and the recipient accepts and uses them with the express understanding that the US Government makes no warranty, express or implied, concerning the accuracy, completeness, reliability, usability or suitability for any purpose of the information and the data furnished. The United States Government shall be under no liability whatsoever to any person by reason of any use made thereof. These data being in the US Government. Therefore the recipient fully agrees not to reproduce these data to anyone as other than US Government provided data. The recipient may not transfer these data to others without also transferring this disclaimer. Distribution Liability: This data represents the results of data collection/processing for a specific US Army Corps of Engineers activity and induces the general existing conditions. As such, it is only valid for its intended use, control, time and accuracy specifications. The user is responsible for the results of any of the application of the data for other than its intended purpose.