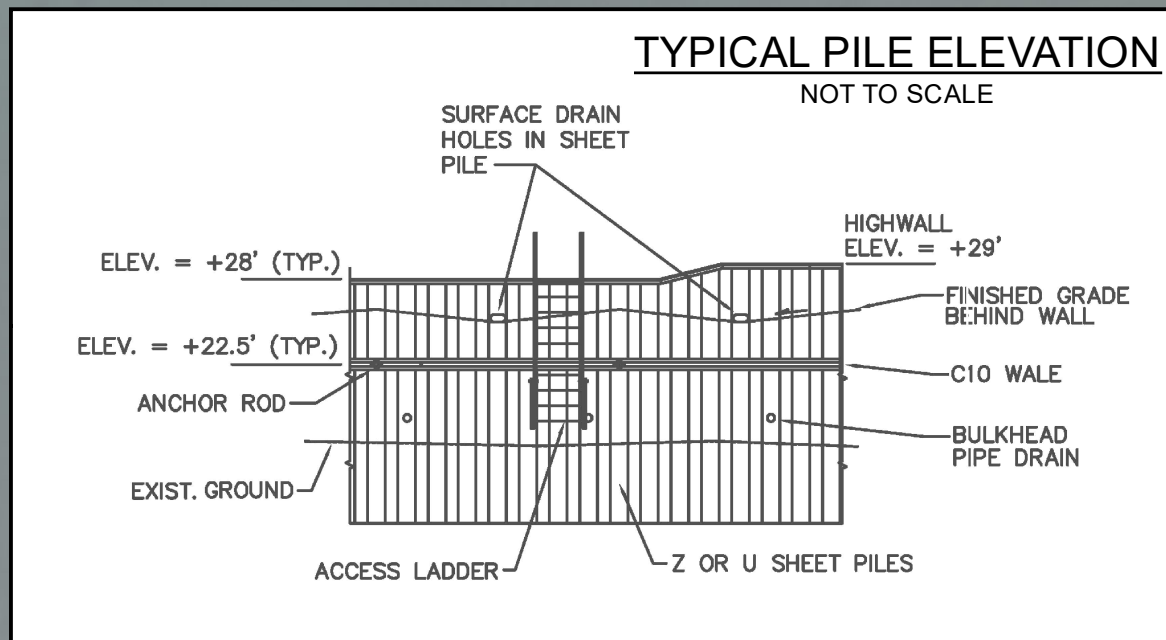
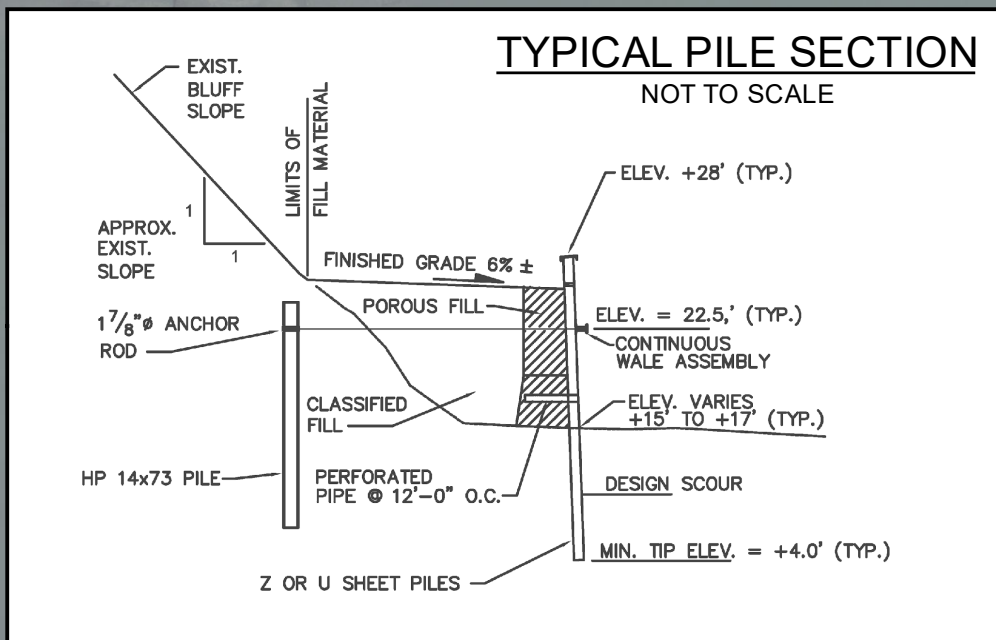




H-PILE SUPPORTED SHEETPILE BULKHEAD
LENGTH 1625'

RIPRAP REVETMENT
LENGTH 600'



NUSHAGAK RIVER



1:5,000

DILLINGHAM BANK PROTECTION

DILLINGHAM, ALASKA



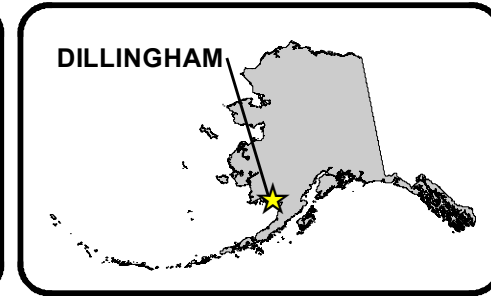
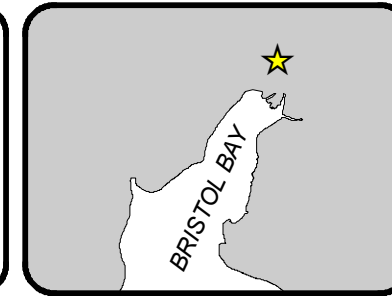
US Army Corps of Engineers Alaska District

NOTES:

1. THIS LOCALITY IS SHOWN ON USGS QUAD SHEET DILLINGHAM A-7
2. CURRENT SURVEY INFORMATION FOR THIS PROJECT AT <https://navigation.usace.army.mil/Survey/Hydro>

MAP DATE: 202001 IMAGERY DATE: 201907

Imagery Credits: National Geographic, ESRI, DeLorme, NAVTEQ, UNEP-WCMC, USGS, NASA, METI, NRCAN, GEBCO, NOAA, IPC, DigitalGlobe, GeoEye, Earthstar Geographics, SIO



01: 02-Project & Index Book/Map/Chgr/ Harbor/Chgr/ Template/Book.mxd
Accession: The United States Government furnishes these data and the recipient accepts and uses them with the express understanding that the US Government makes no warranty, expressed or implied, concerning accuracy, completeness, suitability, availability for any particular purpose of the information and the data furnished. The United States Government shall be under no liability whatsoever to any person by reason of any use made thereof. These data being in the US Government. Therefore the recipient fully agrees not to reproduce these data in any form or by any means without the express written permission of the US Government. Distribution: This data was prepared for a specific US Army Corps of Engineers activity and is not to be distributed outside the organization. The user is responsible for the results of any application of the data for other than its intended purpose.