



SHISHMAREF EROSION PROTECTION

SHISHMAREF, ALASKA



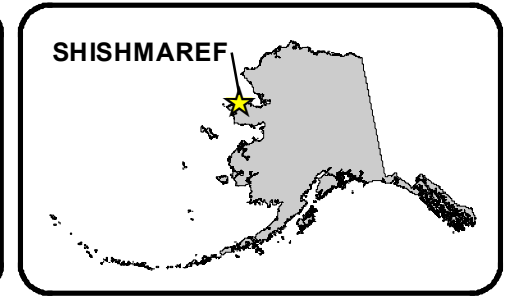
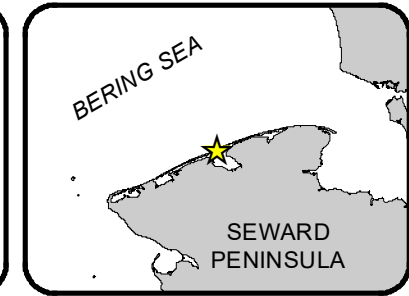
US Army Corps of Engineers Alaska District

NOTES:

1. THIS LOCALITY IS SHOWN ON USGS QUAD SHISHMAREF B-3
2. CURRENT SURVEY INFORMATION FOR THIS PROJECT AT <https://navigation.usace.army.mil/Survey/Hydro>

MAP DATE: 202001 IMAGERY DATE: 201910

Imagery Credits: National Geographic, ESRI, DeLorme, NAVTEQ, UNEP-WCMC, USGS, NASA, METI, NRCAN, GEBCO, NOAA, IPC, DigitalGlobe, GeoEye, Earthstar Geographics, SIO



Access Constraints: The United States Government furnishes these data and the acceptor accepts and uses them with the express understanding that the US Government makes no warranty, expressed, or implied concerning the accuracy, completeness, reliability, usability, or timeliness of the information and the data furnished. The United States Government shall be under no liability whatsoever to any person by reason of any use made thereof. These data belong to the US Government. Therefore the recipient hereby agrees not to release these data to anyone else without the US Government's explicit approval. The recipient may not transfer these data to others, in any form or by any means, without the US Government's explicit approval. Distribution Limits: This data represents the results of data of collection activities of a US Army Corps of Engineers and is not to be used for any other purpose without the express approval of the Corps. This data is not to be used for any other purpose without the express approval of the Corps.