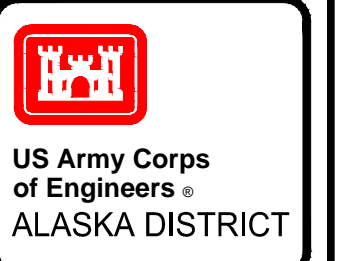


SHEET V-101

SHEET V-103

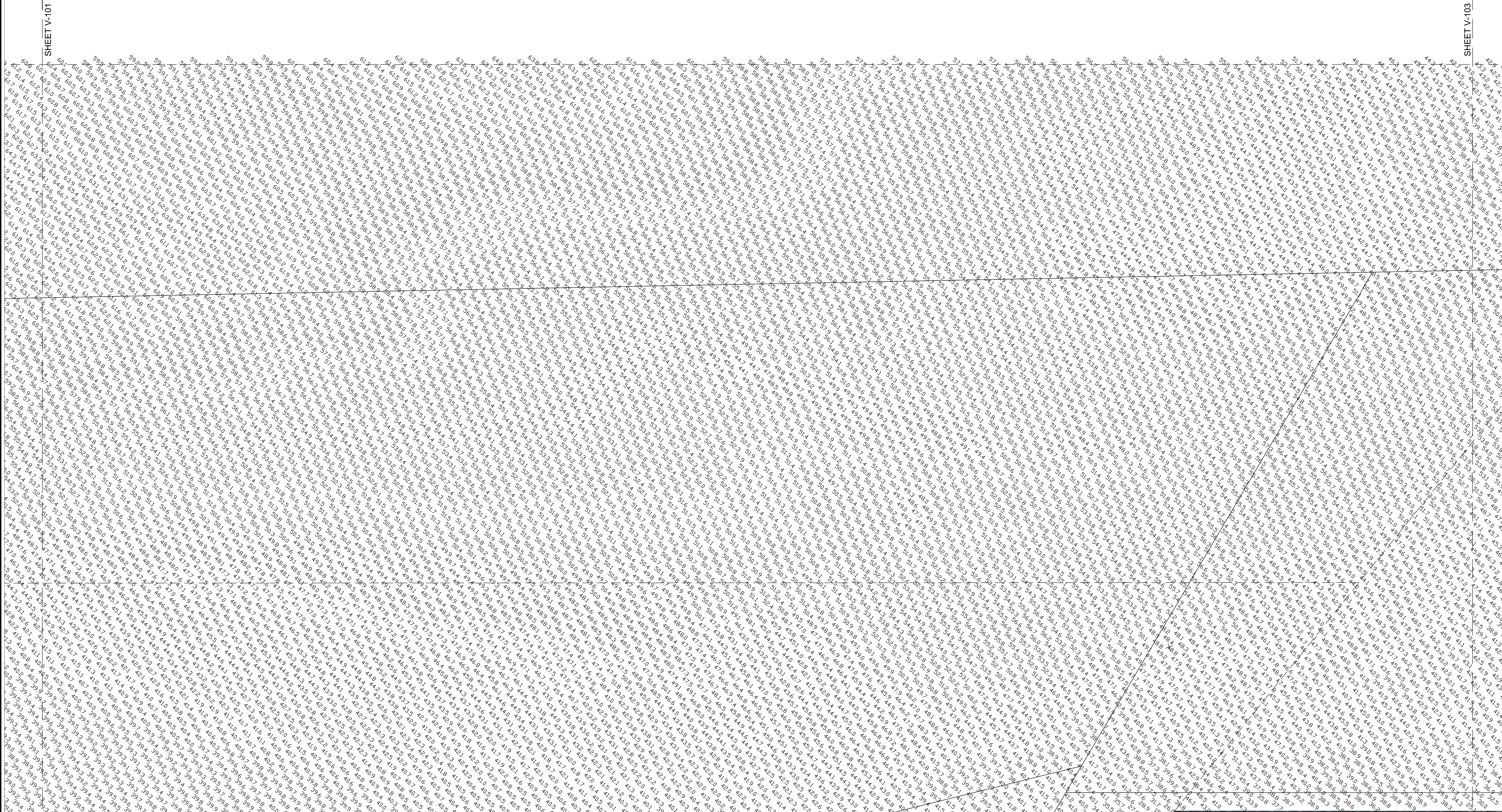


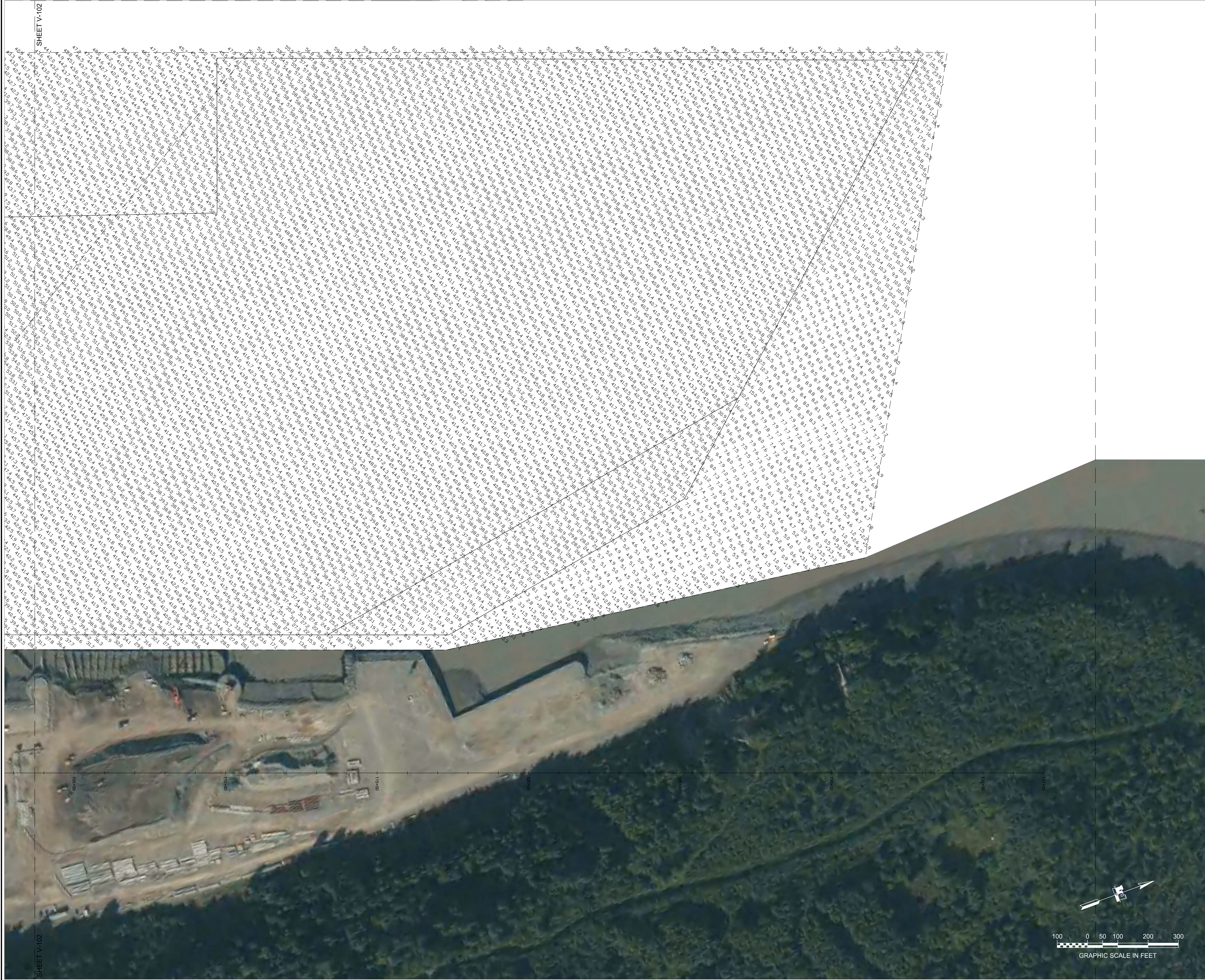
CONTRACT NO. MULTIPLE-LOCATIONS
DRAWING NO. MAINTENANCE
CITY STATE WASHINGTON
DATE
APPROVED
BY

NO.	DATE	DESCRIPTION	BY	APP'D

DATE: 07/11/2017
 DRAWN BY: JBER, ALASKA 8908-0088
 CHECKED BY: WITHERS-COLES
 SCALE: 1"=500'
 FILE NAME: POST_20171110-11_POA
 SHEET: 2 OF 5

ANCHORAGE, ALASKA
 2015-2017 MAINTENANCE DREDGING, PORT OF ANCHORAGE
 HYDROGRAPHIC SURVEY
 POST_20171110-11_POA
 SHEET IDENTIFICATION
 V-102
 Sheet 2 of 5





GRAPHIC SCALE IN FEET



CONTRACT NO.	WILLIS-15-000
CONTRACTOR	MAHON CONSTRUCTION CO.
CITY	STATE
DATE	11/13/17
APPROVED BY	
DATE	

NO.	DESCRIPTION	DATE	BY	APPV.

DATE PLOTTED	08/28/2017
DRAWN BY	JACOB
CHECKED BY	JACOB
SCALE	AS SHOWN
PLOT DATE	08/28/2017
FILE NAME	POST_20171110-11_POA
SIZE	11x17

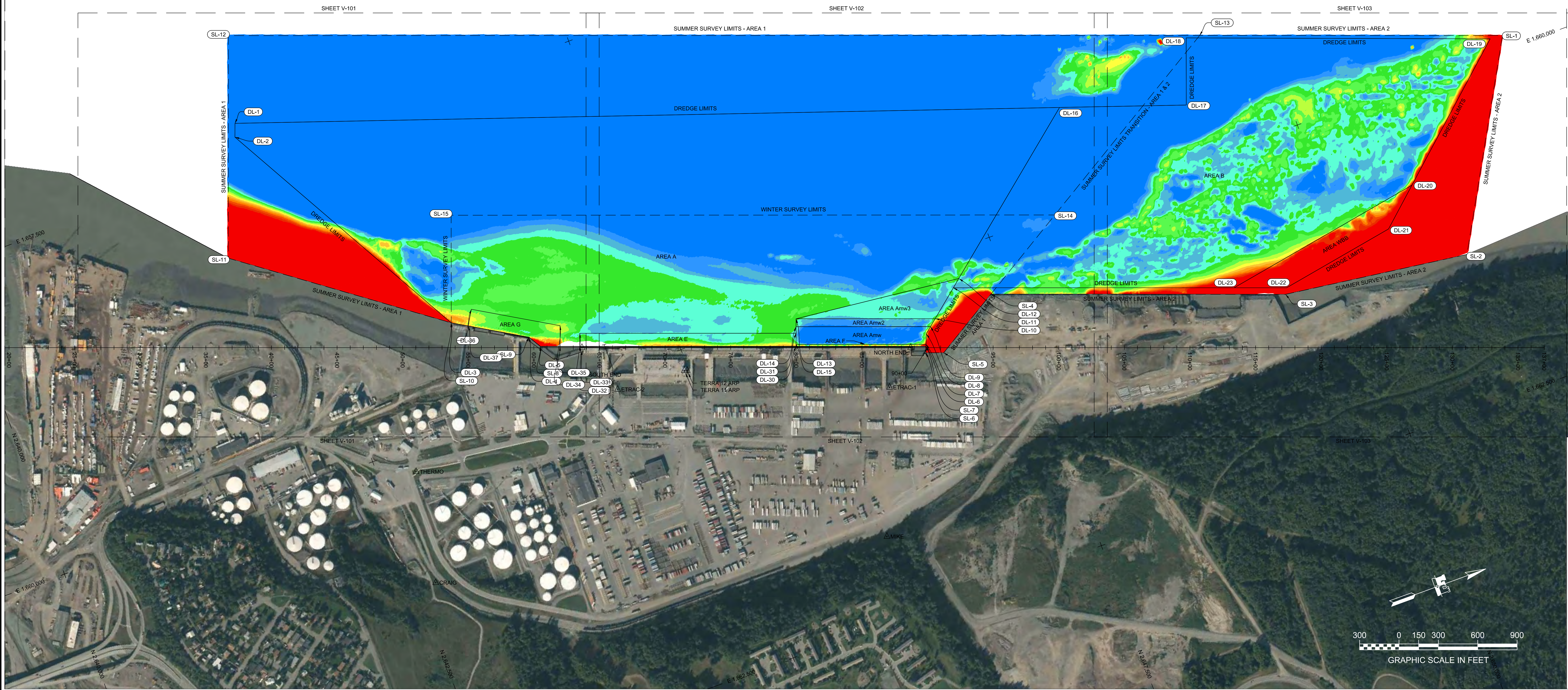
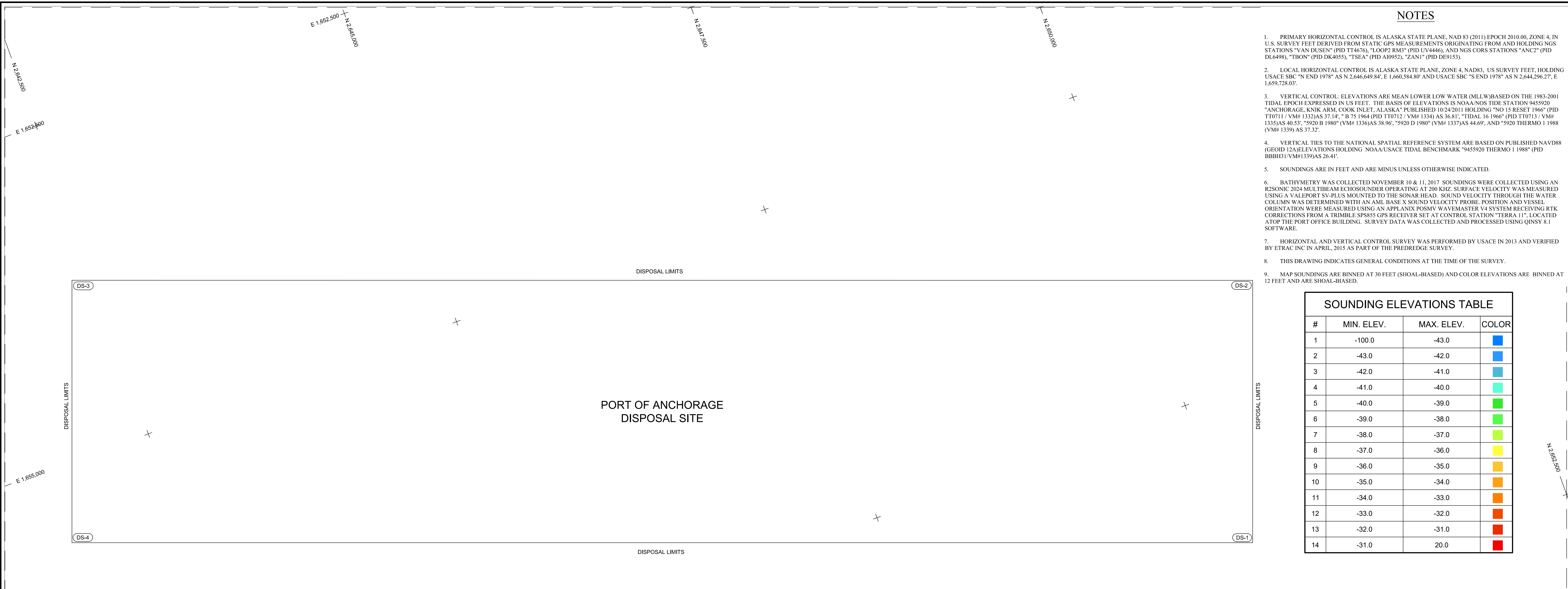
DESIGNED BY	ALASKA DISTRICT
DRAWN BY	JACOB
CHECKED BY	JACOB
SCALE	AS SHOWN
PLOT DATE	08/28/2017
FILE NAME	POST_20171110-11_POA
SIZE	11x17

NOTES

1. PRIMARY HORIZONTAL CONTROL IS ALASKA STATE PLANE, NAD 83 (2011) EPOCH 2010.00, ZONE 4, IN U.S. SURVEY FEET DERIVED FROM STATIC GPS MEASUREMENTS ORIGINATING FROM AND HOLDING NGS STATIONS "VAN DUSEN" (PID T14676), "LODGE" (PID U3446), AND NGS CORS STATIONS "ANC2" (PID DL4498), "TBN" (PID DK4055), "TSEA" (PID A10952), "ZANI" (PID DE9153).
2. LOCAL HORIZONTAL CONTROL IS ALASKA STATE PLANE, ZONE 4, NAD83, US SURVEY FEET, HOLDING USACE SBC "N END 1978" AS N 2,646,649.84, E 1,660,584.80 AND USACE SBC "S END 1978" AS N 2,644,296.27, E 1,659,728.03.
3. VERTICAL CONTROL: ELEVATIONS ARE MEAN LOWER LOW WATER (MLLW) BASED ON THE 1983-2001 TIDAL EPOCH EXPRESSED IN US FEET. THE BASIS OF ELEVATIONS IS NOAA'S TIDE STATION 9455920 "ANCHORAGE, KNIK ARM, COOK INLET, ALASKA" PUBLISHED 10/20/11 HOLDING "NO 15 RESET 1966" (PID T10711 / VMF 1332) AS 37.14, "B 75 1964 (PID T10712 / VMF 1334) AS 36.81, "TIDAL 16 1966" (PID T10713 / VMF 1335) AS 40.53, "5920 B 1980" (VMF 1336) AS 38.96, "5920 D 1980" (VMF 1337) AS 44.69, AND "5920 THERMO 1 1988 (VMF 1339) AS 37.37".
4. VERTICAL TIES TO THE NATIONAL SPATIAL REFERENCE SYSTEM ARE BASED ON PUBLISHED NAVD83 (GEOID) ELEVATIONS HOLDING NOAA-USACE TIDAL BENCHMARK "9455920 THERMO 1 1988" (PID BBBH31/VMF1339) AS 26.41'.
5. SOUNDINGS ARE IN FEET AND ARE MINUS UNLESS OTHERWISE INDICATED.
6. BATHYMETRY WAS COLLECTED NOVEMBER 10 & 11, 2017. SOUNDINGS WERE COLLECTED USING AN RESONIC 3024 MULTIBEAM ECHOSOUNDER OPERATING AT 200 KHZ. SURFACE VELOCITY WAS MEASURED USING A VALEPORT SV-PLUS MOUNTED TO THE SONAR HEAD. SOUND VELOCITY THROUGH THE WATER COLUMN WAS DETERMINED WITH AN AML BASE X SOUND VELOCITY PROBE. POSITION AND VESSEL ORIENTATION WERE MEASURED USING AN APPLANIX POSSEY WAVEMASTER V4 SYSTEM RECEIVING RTK CORRECTIONS FROM A TRIMBLE SPSS5 GPS RECEIVER SET AT CONTROL STATION "TERRA 11", LOCATED ATOP THE PORT OFFICE BUILDING. SURVEY DATA WAS COLLECTED AND PROCESSED USING QINSY 8.1 SOFTWARE.
7. HORIZONTAL AND VERTICAL CONTROL SURVEY WAS PERFORMED BY USACE IN 2013 AND VERIFIED BY ETAC INC IN APRIL, 2015 AS PART OF THE PREDREDGE SURVEY.
8. THIS DRAWING INDICATES GENERAL CONDITIONS AT THE TIME OF THE SURVEY.
9. MAP SOUNDINGS ARE BINNED AT 30 FEET (SHOAL-BIASED) AND COLOR ELEVATIONS ARE BINNED AT 12 FEET AND ARE SHOAL-BIASED.

SOUNDING ELEVATIONS TABLE			
#	MIN. ELEV.	MAX. ELEV.	COLOR
1	-100.0	-43.0	Blue
2	-43.0	-42.0	Blue
3	-42.0	-41.0	Blue
4	-41.0	-40.0	Light Blue
5	-40.0	-39.0	Light Green
6	-39.0	-38.0	Light Green
7	-38.0	-37.0	Light Green
8	-37.0	-36.0	Yellow
9	-36.0	-35.0	Yellow
10	-35.0	-34.0	Orange
11	-34.0	-33.0	Orange
12	-33.0	-32.0	Red
13	-32.0	-31.0	Red
14	-31.0	20.0	Red

PORT OF ANCHORAGE DISPOSAL SITE



US Army Corps of Engineers
ALASKA DISTRICT

CONTRACT NO. W17H12-C-0006
CONTRACTOR: MARSH CONSTRUCTION CO.
CITY: SEATTLE STATE: WASHINGTON
DATE: 11/13/17
REVISIONS: [Table with columns: NO., DATE, DESCRIPTION]

DESIGNED BY: [Name]
DRAWN BY: [Name]
CHECKED BY: [Name]
SCALE: [Scale]
DATE: [Date]

APPROVED BY: [Name]
DATE: [Date]

ANCHORAGE, ALASKA
2015 - 2017 MAINTENANCE DREDGING, PORT OF ANCHORAGE
HYDROGRAPHIC SURVEY
POST_20171110-11_POA

SHEET IDENTIFICATION
V-104
Sheet 4 of 5