

SHEET V-102

SHEET V-102

<p>US Army Corps of Engineers ALASKA DISTRICT</p>	
CONTRACT NO. W7HRLC-0006 CONTINGENT MANPOWER CONSTRUCTION CO. CITY SEATTLE Recommended	STATE WASHINGTON Approved DATE:
CHECKED BY: J. HANSEN DRAWN BY: J. HANSEN FILE NAME: POST 20181031_POA	U.S. ARMY CORPS OF ENGINEERS ALASKA DISTRICT JBER, ALASKA 99506-0888 1" = 100' PRELIMINARY
1/11/2018 09:18 AM U.S. ARMY CORPS OF ENGINEERS ALASKA DISTRICT JBER, ALASKA 99506-0888 1" = 100' PRELIMINARY	1/11/2018 09:18 AM U.S. ARMY CORPS OF ENGINEERS ALASKA DISTRICT JBER, ALASKA 99506-0888 1" = 100' PRELIMINARY
ANCHORAGE, ALASKA 2018-2020 MAINTENANCE DREDGING, PORT OF ALASKA HYDROGRAPHIC SURVEY POST 20181031_POA	SHEET IDENTIFICATION V-101 Sheet 1 of 5






SHEET V-101

SHEET V-103

SHEET V-101

SHEET V-103


  
 US Army Corps of Engineers  
 ALASKA DISTRICT

---

CONTRACT NO. W19HLE-0006  
 CONTINGENT: WINDSUN CONSTRUCTION CO.  
 CITY: SEATTLE STATE: WASHINGTON  
 Recommendation: Approved Date:

---

CHECKED BY: LUCY DAVIS  
 DESIGNED BY: JEFFREY HARRISON  
 DRAWN BY: JEFFREY HARRISON  
 FILE NAME: PORT OF ANCHORAGE  
 SCALE: 1" = 100'  
 DATE: 02/20/2018

---

U.S. ARMY CORPS OF ENGINEERS  
 ALASKA DISTRICT  
 JBER, ALASKA 99506-8988

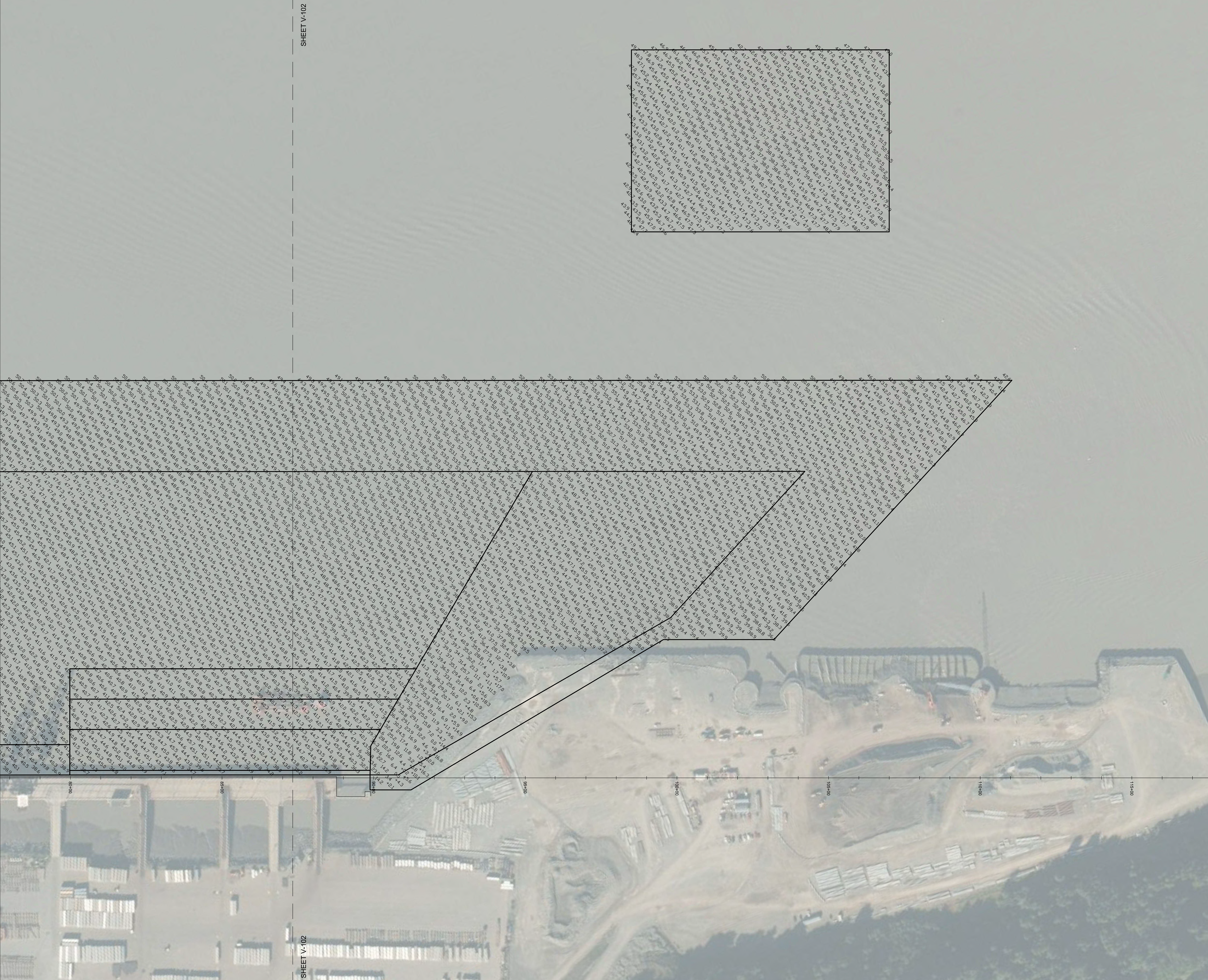
---

ANCHORAGE, ALASKA  
 2018-2020 MAINTENANCE DREDGING, PORT OF ALASKA  
 HYDROGRAPHIC SURVEY  
 POST 20181031\_POA

---

SHEET IDENTIFICATION  
 V-102  
 Sheet 2 of 5





SHEET V-102

SHEET V-102

**US Army Corps  
of Engineers**  
ALASKA DISTRICT

CONTRACT NO. W19HLE6C0006  
CONTINUATION: MANSON CONSTRUCTION CO.  
CITY: SEATTLE STATE: WASHINGTON  
APPROVED: \_\_\_\_\_  
DATE: \_\_\_\_\_

REVISIONS  
BY: \_\_\_\_\_ DATE: \_\_\_\_\_  
DESCRIPTION: \_\_\_\_\_

DATE PLOTTED: 01/11/2018  
DRAWN BY: JAWAIDHUSAN  
CHECKED BY: JAWAIDHUSAN  
APPROVED BY: JAWAIDHUSAN  
FILE NAME: POST20181031\_POA  
SCALE: 1"=100'

U.S. ARMY CORPS OF ENGINEERS  
ALASKA DISTRICT  
JBER, ALASKA 99506-0888

ANCHORAGE, ALASKA  
2018-2020 MAINTENANCE DREDGING, PORT OF ALASKA  
HYDROGRAPHIC SURVEY  
POST 20181031\_POA

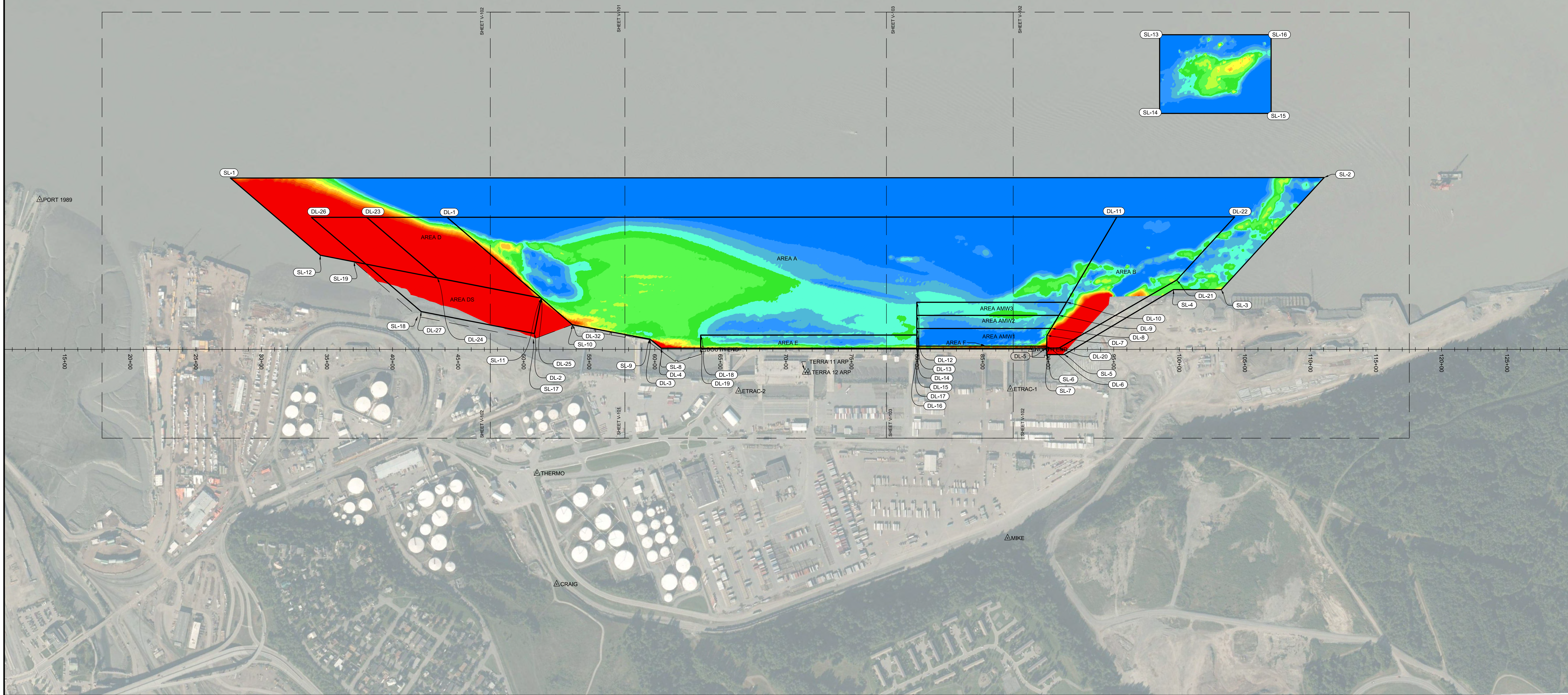
SHEET IDENTIFICATION  
V-103  
Sheet 3 of 5



NOTES

- PRIMARY HORIZONTAL CONTROL IS ALASKA STATE PLANE, NAD 83 (2011) EPOCH 2010.00, ZONE 4. IN U.S. SURVEY FEET DERIVED FROM STATIC GPS MEASUREMENTS ORIGINATING FROM AND HOLDING NGS STATIONS "VAN DUSEN" (PID T14676), "LOOP2 RMS" (PID LV4446), AND NGS CORS STATIONS "ANC2" (PID DL6498), "TBN" (PID DK4055), "TSEA" (PID AI0952), "ZAN1" (PID DE9153).
- LOCAL HORIZONTAL CONTROL IS ALASKA STATE PLANE, ZONE 4, NAD83. US SURVEY FEET. HOLDING USACE SBC "N END 1978" AS N 2,646,649.84', E 1,660,584.80' AND USACE SBC "S END 1978" AS N 2,644,296.27', E 1,659,728.03'.
- VERTICAL CONTROL: ELEVATIONS ARE MEAN LOWER LOW WATER (MLLW) BASED ON THE 1983-2001 TIDAL EPOCH EXPRESSED IN US FEET. THE BASIS OF ELEVATIONS IS NOAA NOS TIDE STATION 9455920 "ANCHORAGE, KNIK ARM, COOK INLET, ALASKA" PUBLISHED 10/24/2011 HOLDING "NO 15 RESET 1966" (VM# 1332) AS 37.14'.
- VERTICAL TIES TO THE NATIONAL SPATIAL REFERENCE SYSTEM ARE BASED ON PUBLISHED NAVD88 (GEOID 12B) ELEVATIONS HOLDING NOAA/USACE TIDAL BENCHMARK "9455920 TIDAL 16" (PID TT0713 VM# 1335) AS 29.79'.
- SOUNDINGS ARE IN FEET AND ARE MINUS UNLESS OTHERWISE INDICATED.
- BATHYMETRY WAS COLLECTED OCTOBER 31, 2018. SOUNDINGS WERE COLLECTED USING AN RESONIC 2024 MULTIBEAM ECHOSOUNDER OPERATING AT 200 KHZ. SURFACE SOUND VELOCITY WAS MEASURED USING A VALEPORT SV-PUS MOUNTED TO THE SONAR HEAD. SOUND VELOCITY THROUGH THE WATER COLUMN WAS DETERMINED WITH AN AML BASE X SOUND VELOCITY PROBE. POSITION AND VESSEL ORIENTATION WERE MEASURED USING AN APPLANIX POSMV WAVEMASTER V5 SYSTEM RECEIVING RTK CORRECTIONS FROM A TRIMBLE SPSS GNS5 RECEIVER SET AT CONTROL STATION "TERRA 11", LOCATED ATOP THE PORT OFFICE BUILDING. SURVEY DATA WAS COLLECTED USING QINSY 8.1 SOFTWARE AND PROCESSED USING QIMERA 1.5 SOFTWARE.
- HORIZONTAL AND VERTICAL CONTROL SURVEY WAS PERFORMED BY USACE IN 2013 AND VERIFIED BY ETRAC INC IN APRIL, 2018 AS PART OF THE PREDREDGE SURVEY.
- THIS DRAWING INDICATES GENERAL CONDITIONS AT THE TIME OF THE SURVEY.
- MAP SOUNDINGS ARE BINNED AT 30 FEET (SHOAL-BIASED) AND COLOR ELEVATIONS ARE BINNED AT 12 FEET AND ARE SHOAL-BIASED.

SOUNDING ELEVATIONS TABLE			
#	MIN. ELEV.	MAX. ELEV.	COLOR
1	-100.0	-43.0	Blue
2	-43.0	-42.0	Light Blue
3	-42.0	-41.0	Light Cyan
4	-41.0	-40.0	Cyan
5	-40.0	-39.0	Green
6	-39.0	-38.0	Light Green
7	-38.0	-37.0	Yellow-Green
8	-37.0	-36.0	Yellow
9	-36.0	-35.0	Orange
10	-35.0	-34.0	Light Orange
11	-34.0	-33.0	Orange-Red
12	-33.0	-32.0	Red-Orange
13	-32.0	-31.0	Red
14	-31.0	20.0	Dark Red



**U.S. Army Corps of Engineers**  
**ALASKA DISTRICT**

---

CONTRACT NO. W19HLE-C-0008  
 CONTINUATION: MAINTENANCE DREDGING, PORT OF ALASKA  
 CITY: ANCHORAGE, STATE: ALASKA  
 DRAWN BY: J. ANDERSON  
 CHECKED BY: J. ANDERSON  
 DATE: 10/30/2018 11:58 AM  
 SCALE: 1" = 100'  
 FILE NAME: POST\_20181031\_POA.DWG

---

**ANCHORAGE, ALASKA**  
**2018-2020 MAINTENANCE DREDGING, PORT OF ALASKA**  
**HYDROGRAPHIC SURVEY**  
**POST 20181031\_POA**

---

SHEET IDENTIFICATION  
V-104

Sheet 4 of 5