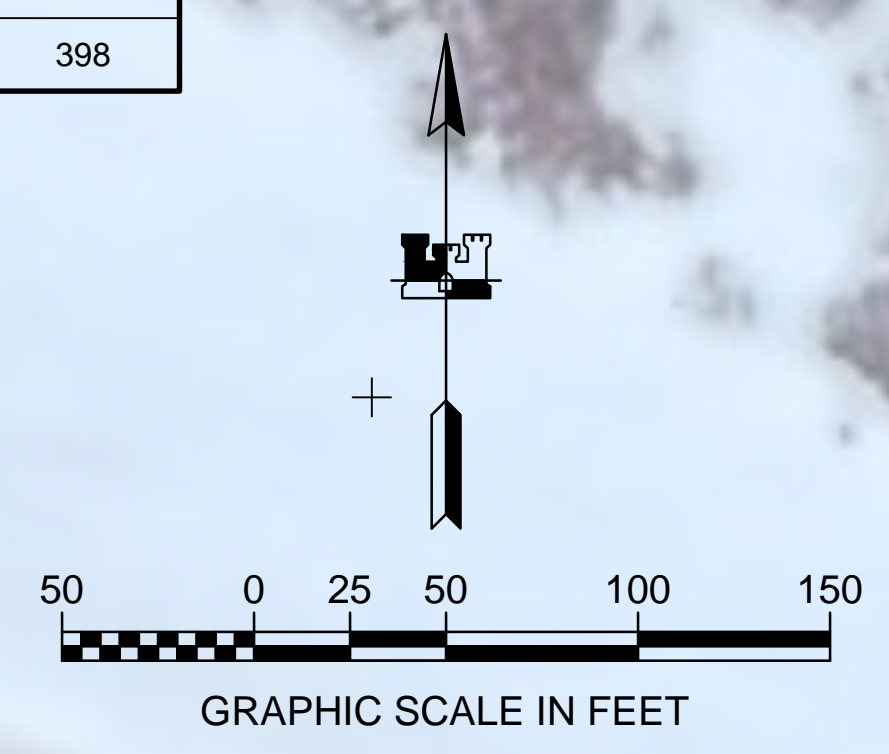


STATION	NORTHING	EASTING	MLLW	DESCRIPTION
1475-1 1986	2,482,263.76	1,687,527.24	8.44	USACE SBC
ATS 1346 1992	2,481,062.33	1,687,023.56	8.31	DAMAGED
BH-1 2013	2,481,189.68	1,687,698.40	8.19	(SET) 3 INCH BRASS CAP
BH-2 2013	2,482,278.40	1,687,609.26	9.09	(SET) 3 INCH ALUM. CAP
BH-A 1996	2,481,940.58	1,687,756.71		DESTROYED
BH-B 1996	2,481,469.27	1,687,431.20		DESTROYED
BH-C 1998	2,481,686.86	1,687,139.66	6.55	DAMAGED
BH-D 1998	2,481,244.34	1,687,288.37	8.52	3 INCH ALUM. CAP
BH-E 2001	2,481,197.92	1,687,709.26		DESTROYED
BH-F 2001	2,481,074.18	1,686,930.35	8.28	2.5 INCH ALUM. CAP
LCMF C1 1992	2,481,417.42	1,687,819.64	9.17	3 INCH ALUM. CAP
LCMF C2 1993	2,482,146.44	1,686,982.60		DESTROYED

PROJECT LIMITS			SURVEY LIMITS		
CORNER#	NORTHING	EASTING	CORNER#	NORTHING	EASTING
1	2,481,713.90	1,688,093.60	30	2,481,795.81	1,688,140.44
2	2,481,663.80	1,688,107.40	31	2,481,643.82	1,688,182.31
3	2,481,175.90	1,687,862.30	32	2,481,584.47	1,688,135.30
4	2,481,078.70	1,687,727.90	33	2,481,146.75	1,687,922.56
5	2,481,023.30	1,687,318.90	34	2,481,012.31	1,687,736.80
6	2,480,939.70	1,687,205.90	35	2,480,958.42	1,687,338.83
7	2,480,706.30	1,687,098.70	36	2,480,913.97	1,687,278.80
8	2,480,719.20	1,687,070.50	37	2,480,875.52	1,687,261.14
9	2,480,953.30	1,687,178.00	38	2,480,537.27	1,687,106.86
10	2,481,053.90	1,687,314.00	39	2,480,613.77	1,686,941.04
11	2,481,109.40	1,687,723.80	40	2,480,875.52	1,687,063.49
12	2,481,189.40	1,687,834.40	41	2,481,135.05	1,687,040.42
13	2,481,451.20	1,687,961.60	42	2,481,134.97	1,687,080.02
14	2,481,587.00	1,687,886.40	43	2,481,255.68	1,687,364.72
15	2,481,616.30	1,687,602.90	44	2,481,256.01	1,687,389.64
16	2,481,608.30	1,687,574.00	45	2,481,139.05	1,687,389.52
17	2,481,560.90	1,687,400.40	46	2,481,150.57	1,687,483.39
18	2,481,984.50	1,686,980.20	47	2,481,153.89	1,687,602.70
19	2,482,017.90	1,686,989.10	48	2,481,255.68	1,687,724.99
20	2,482,138.80	1,687,428.50	49	2,481,445.62	1,687,817.27
21	2,482,170.60	1,687,544.20	50	2,481,437.74	1,687,314.33
22	2,482,142.60	1,687,593.40	51	2,482,007.75	1,686,762.34
23	2,481,732.30	1,687,705.90	52	2,482,212.47	1,686,904.05
24	2,481,695.70	1,687,749.00	53	2,482,438.21	1,687,614.62
25	2,481,674.80	1,687,951.60	54	2,482,232.34	1,687,730.88
			55	2,482,010.86	1,687,791.61
			56	2,481,943.38	1,687,810.12
			57	2,481,909.01	1,687,751.62
			58	2,481,759.14	1,687,791.06
			59	2,481,760.36	1,688,003.00

PROJECT DEPTH (-4.0)	CY
AVAILABLE TO PROJECT DEPTH (-4.0)	15
AVAILABLE BETWEEN PROJECT DEPTH (-4.0) AND MAX PAY DEPTH (-5.0)	365
AVAILABLE ALONG SIDE SLOPES (3:1)	18
TOTAL MATERIAL AVAILABLE	398

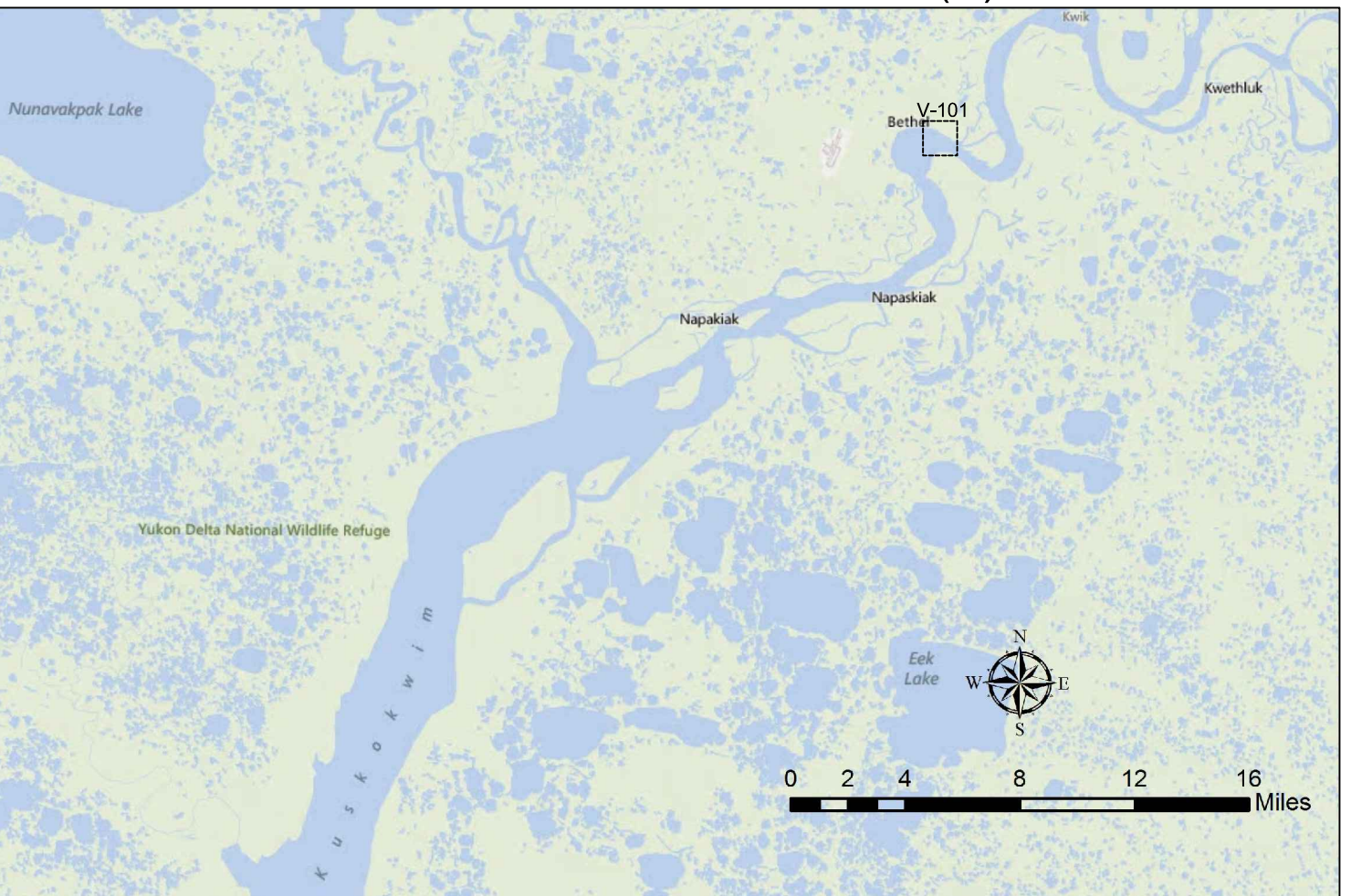
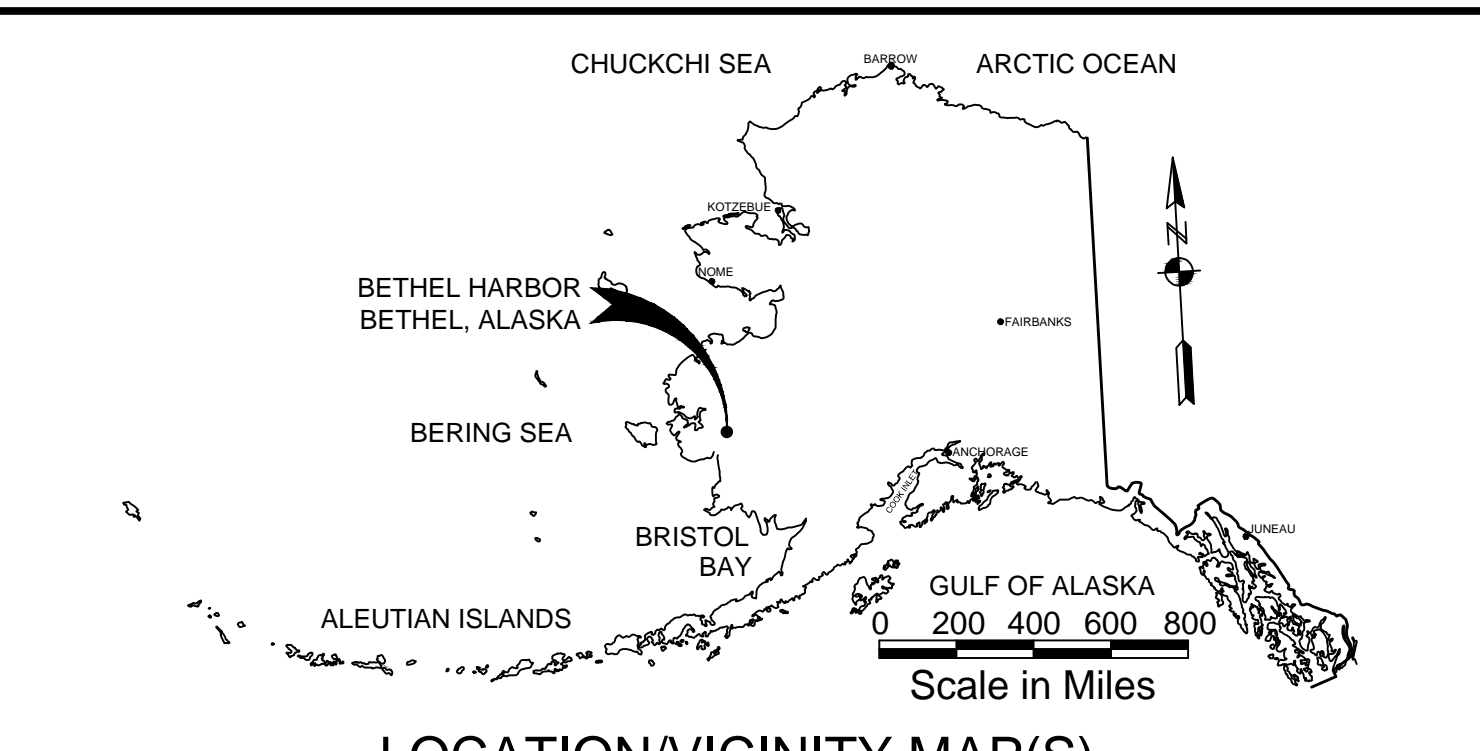
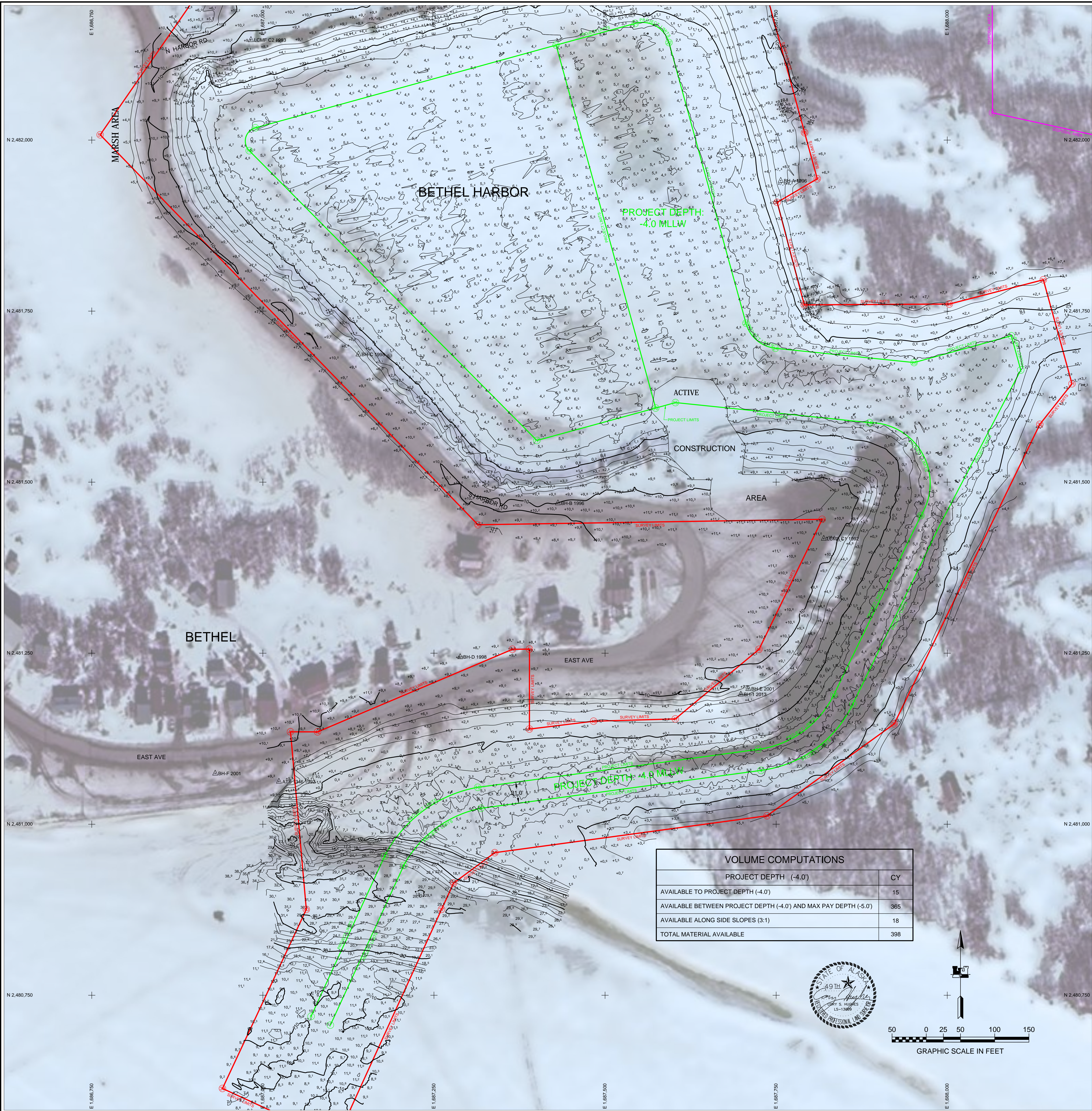


US Army Corps of Engineers - ALASKA DISTRICT

CONTRACT NO. W9133Q-03-00000001
 CONTRACTOR: HUGHES & ASSOCIATES
 CITY: WASILLA, ALASKA
 STATE: ALASKA
 DATE: SEPTEMBER 25, 2013

**BETHEL, ALASKA
 BETHEL HARBOR
 PROJECT CONDITION SURVEY
 SEPTEMBER 25, 2013**

**SHEET IDENTIFICATION
 V-102
 Sheet 2 of 2**



STATION	NORTHING	EASTING	MLLW	DESCRIPTION
1475-1 1986	2,482,263.76	1,687,527.24	8.44	USACE SBC
ATS 1346 1992	2,481,062.33	1,687,023.56	8.31	DAMAGED
BH-1 2013	2,481,189.68	1,687,698.40	8.19	(SET) 3 INCH BRASS CAP
BH-2 2013	2,482,278.40	1,687,609.26	9.09	(SET) 3 INCH ALUM. CAP
BH-A 1996	2,481,940.58	1,687,756.71		DESTROYED
BH-B 1996	2,481,469.27	1,687,431.20		DESTROYED
BH-C 1998	2,481,686.86	1,687,139.66	6.55	DAMAGED
BH-D 1998	2,481,244.34	1,687,288.37	8.52	3 INCH ALUM. CAP
BH-E 2001	2,481,197.92	1,687,709.26		DESTROYED
BH-F 2001	2,481,074.18	1,686,930.35	8.28	2.5 INCH ALUM. CAP
LCMF C1 1992	2,481,417.42	1,687,819.64	9.17	3 INCH ALUM. CAP
LCMF C2 1993	2,482,146.44	1,686,982.60		DESTROYED

CORNER#	NORTHING	EASTING	CORNER#	NORTHING	EASTING
1	2,481,713.90	1,688,093.60	30	2,481,795.81	1,688,140.44
2	2,481,663.80	1,688,107.40	31	2,481,643.82	1,688,182.31
3	2,481,175.90	1,687,862.30	32	2,481,584.47	1,688,135.30
4	2,481,078.70	1,687,727.90	33	2,481,146.75	1,687,922.56
5	2,481,023.30	1,687,318.90	34	2,481,012.31	1,687,736.80
6	2,480,939.70	1,687,205.90	35	2,480,958.42	1,687,338.83
7	2,480,706.30	1,687,098.70	36	2,480,913.97	1,687,278.80
8	2,480,719.20	1,687,070.50	37	2,480,875.52	1,687,261.14
9	2,480,953.30	1,687,178.00	38	2,480,537.27	1,687,106.86
10	2,481,053.90	1,687,314.00	39	2,480,613.77	1,686,941.04
11	2,481,109.40	1,687,723.80	40	2,480,875.52	1,687,063.49
12	2,481,189.40	1,687,834.40	41	2,481,135.05	1,687,040.42
13	2,481,451.20	1,687,961.60	42	2,481,134.97	1,687,080.02
14	2,481,587.00	1,687,886.40	43	2,481,255.68	1,687,364.72
15	2,481,616.30	1,687,602.90	44	2,481,256.01	1,687,389.64
16	2,481,608.30	1,687,574.00	45	2,481,139.05	1,687,389.52
17	2,481,560.90	1,687,400.40	46	2,481,150.57	1,687,483.39
18	2,481,984.50	1,686,980.20	47	2,481,153.89	1,687,602.70
19	2,482,017.90	1,686,989.10	48	2,481,255.68	1,687,724.99
20	2,482,138.80	1,687,428.50	49	2,481,445.62	1,687,817.27
21	2,482,170.60	1,687,544.20	50	2,481,437.74	1,687,314.33
22	2,482,142.60	1,687,593.40	51	2,482,007.75	1,686,762.34
23	2,481,732.30	1,687,705.90	52	2,482,212.47	1,686,904.05
24	2,481,695.70	1,687,749.00	53	2,482,438.21	1,687,614.62
25	2,481,674.80	1,687,951.60	54	2,482,232.34	1,687,730.88
			55	2,482,010.86	1,687,791.61
			56	2,481,943.38	1,687,810.12
			57	2,481,909.01	1,687,751.62
			58	2,481,759.14	1,687,791.06
			59	2,481,760.36	1,688,003.00

US Army Corps of Engineers
ALASKA DISTRICT

CONTRACT NO. W9133Q-03-00000001
DRAWING NO. JBERE ALASKA 9806-0988
CONTRACTOR: HUGHES & ASSOCIATES
DTP: WASILLA, ALASKA
APPROVED: [Signature]
DATE: [Date]

DATE: [Date]
DRAWN BY: [Name]
CHECKED BY: [Name]
SCALE: [Scale]
SIZE: [Size]
FILE NAME: [File Name]
PLOT DATE: [Date]

BETHEL, ALASKA
BETHEL HARBOR
PROJECT CONDITION SURVEY
SEPTEMBER 25, 2013

SHEET IDENTIFICATION
V-101
Sheet 1 of 2