

DREDGE AREA C	MLLW=0	CU. YD.
VOLUME AVAILABLE ABOVE	-38.0	146
VOLUME AVAILABLE ABOVE	-40.0	3,181
VOLUME AVAILABLE ABOVE	-43.0	105,843
DISPOSAL AREA		
VOLUME AVAILABLE BELOW	-45.0	1,453,963
TOTAL MAXIMUM VOLUME AVAILABLE IN AREA C (ABOVE -43.0)		
		105,843

#	MIN. ELEV.	MAX. ELEV.	COLOR
1	-95.0	-75.0	Red
2	-75.0	-65.0	Orange
3	-65.0	-55.0	Yellow-Orange
4	-55.0	-45.0	Yellow
5	-45.0	-44.0	Light Green
6	-44.0	-43.0	Green
7	-43.0	-42.0	Light Blue
8	-42.0	-41.0	Blue
9	-41.0	-40.0	Light Blue
10	-40.0	-39.0	Blue
11	-39.0	-38.0	Light Blue
12	-38.0	-37.0	Blue
13	-37.0	-36.0	Light Blue
14	-36.0	-35.0	Blue
15	-35.0	-30.0	Light Blue
16	-30.0	-20.0	Blue
17	-20.0	0.0	Light Blue



- NOTES
- PRIMARY PROJECT HORIZONTAL CONTROL IS ALASKA STATE PLANE, ZONE 4, NAD83 NA2011 EPOCH 2010.00, IN US SURVEY FEET BASED ON A FULLY CONSTRAINED STATIC GPS NETWORK HOLDING THE PUBLISHED NGS STATIONS "VAN DUSEN" (PID T14676) AND "LOOP 2 RM 3" (PID UV446) AND INCLUDED NGS CORS STATIONS "ANC2" (PID DL6498), "T80N" (PID DK4055), "T5EA" (PID AI0952), AND "ZAN1" (PID DE9153). LOCAL PROJECT HORIZONTAL CONTROL IS ALASKA STATE PLANE, ZONE 4, NAD83, IN US SURVEY FEET HOLDING USAGE "TERRA 11" AS N 2,644,969.84, E 1,660,159.24.
 - VERTICAL CONTROL IS A TILTED-PLANE MLLW DATUM DERIVED IN 2013 AND BASED ON THE NOAA/NO TIDAL BENCH MARK LISTS "9455520, ANCHORAGE, KNIK ARM, COOK INLET, ALASKA" PUBLISHED 10/24/2011, "9455910, FIRE ISLAND, ALASKA" PUBLISHED 05/21/2004, AND "9456304, PORT MACKENZIE, COOK INLET, ALASKA" PUBLISHED 05/23/2003. THIS TILTED-PLANE MLLW IS BASED ON THE 1983-2001 TIDAL EPOCH AT THOSE STATIONS AND IS REFERENCED BY HOLDING GPS CONTROL STATION "TERRA 11" (PID B8C704) AS 80.48 FT.
 - VERTICAL TIES TO THE NATIONAL SPATIAL REFERENCE SYSTEM ARE BASED ON PUBLISHED NAVD08 (GEOID 128) ELEVATIONS HOLDING "TIDAL 16" (PID T10713/VMM135) AS 29.79 FT.
 - SOUNDINGS ARE IN U.S. SURVEY FEET AND ARE MINUS UNLESS OTHERWISE INDICATED.
 - BATHYMETRY WAS COLLECTED MAY 02, 2018, BY ETAC INC. SOUNDINGS WERE COLLECTED USING AN RSONIC 2024 MULTIBEAM ECHOSOUNDER OPERATING AT 200 KHZ WITH A 120-DEGREE SWATH-WIDTH WITH A 1.0' BEAM-WIDTH. SOUND VELOCITY THROUGH THE WATER COLUMN WAS DETERMINED USING AN AML BASE X SVP. SOUND VELOCITY WAS ALSO MEASURED AT THE SOUNDER HEAD USING A VALEPORT MINIVS. POSITIONING, VESSEL ATTITUDE, AND RTK TIDES WERE PROVIDED IN REAL TIME USING AN APRILANK POSNAV MV 6 WAVEMASTER POSITIONING SYSTEM RECEIVING RTK CORRECTS FROM A TRIMBLE SP885 RECEIVER SET AT CONTROL STATION "TERRA 11" LOCATED ATOP THE PORT OFFICE BUILDING. POST-PROCESS KINEMATIC CORRECTION USING POSPAC MMS 7.1 SOFTWARE WERE APPLIED TO DATA FOLLOWING ACQUISITION. VESSEL NAVIGATION, DATA ACQUISITION AND PROCESSING WERE PERFORMED USING QPS INTEGRATED SOFTWARE.
 - THIS DRAWING INDICATES GENERAL CONDITIONS AT THE TIME OF THE SURVEY.
 - MAP SOUNDINGS ARE BINNED AT 48 FEET (SHOAL-BIASED). COLOR ELEVATIONS ARE BINNED AT 12 FEET (SHOAL-BIASED). VOLUME SOUNDINGS ARE BINNED AT 3 FEET (MEAN VALUE).

STATION	NORTHING	EASTING	MLLW	DESCRIPTION
5920 THERMO 1 1988	2,642,784.70	1,660,183.87	37.3	AL MON (DISTURBED)
BM 12 1974	2,620,563.82	1,604,566.35	27.63	BRASS CAP
BM 5934 F	2,655,203.73	1,655,049.51	36.48	BRASS CAP
CRAIG	2,642,635.95	1,661,029.47	44.73	BRASS CAP
ETRAC-1	2,646,395.57	1,660,814.72	38.22	BRASS CAP
ETRAC-2	2,644,443.04	1,660,120.66	36.31	BRASS CAP
MIKE	2,645,987.73	1,661,875.48	48.38	BRASS CAP
NORTH END	2,646,649.84	1,660,584.80	41.51	USACE SBC
PORT 1989	2,639,934.29	1,656,925.43	39.64	AL MON
PORT MAC	2,655,563.46	1,654,968.22	41.51	BRASS CAP
RIFE 1960	2,620,502.19	1,604,162.70	29.99	BRASS CAP
SOUTH END	2,644,296.27	1,659,728.03	40.57	USACE SBC
TERRA 11 ARP	2,644,969.84	1,660,159.24	80.48	GPS ANTENNA REFERENCE POINT
TERRA 12 ARP	2,644,990.65	1,660,166.56	81.21	GPS ANTENNA REFERENCE POINT

CORNER#	NORTHING	EASTING
DL-28	2,632,288.21	1,628,921.02
DL-29	2,633,360.88	1,628,352.82
DL-30	2,628,708.65	1,619,570.25
DL-31	2,627,635.79	1,620,138.09
DS-5	2,626,323.49	1,614,048.61

CORNER#	NORTHING	EASTING
DS-6	2,626,323.49	1,616,673.28
DS-7	2,624,354.99	1,616,673.28
DS-8	2,624,354.99	1,614,619.08
DS-9	2,624,587.68	1,614,048.61

CORNER#	NORTHING	EASTING
SL-20	2,628,562.99	1,619,081.63
SL-21	2,627,313.36	1,619,743.03
SL-22	2,632,899.16	1,630,288.87
SL-23	2,634,148.83	1,629,627.56

CORNER#	NORTHING	EASTING
SL-24	2,626,423.49	1,613,948.61
SL-25	2,624,254.99	1,613,948.61
SL-26	2,624,254.99	1,616,773.28
SL-27	2,626,423.49	1,616,773.28

STATE OF ALASKA
49TH
GREGORY W. GIBSON
No. LS14824
REGISTERED PROFESSIONAL LAND SURVEYOR

THIS HYDROGRAPHIC SURVEY WAS COMPLETED UNDER THE OVERSIGHT OF AN NSPS/THSOA CERTIFIED HYDROGRAPHER

Gregory W. Gibson (317)

US Army Corps of Engineers - ALASKA DISTRICT

CONTRACT NO. W18HLE-C-0004
CONTRACTOR: MANSION CONSTRUCTION CO.
CITY: SEATTLE STATE: WASHINGTON
APPROVED: [Signature] DATE: [Date]

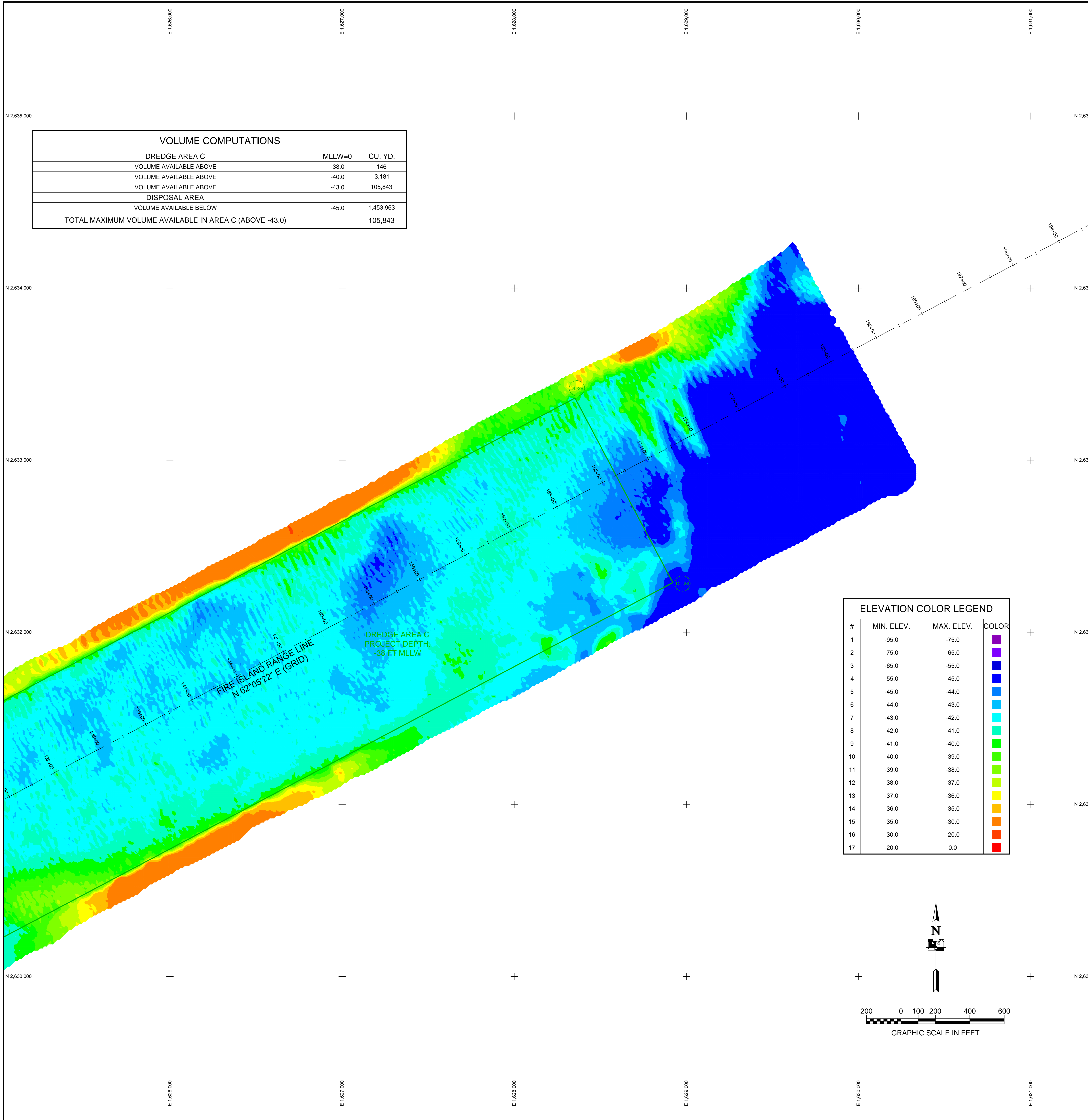
DATE: [Date] BY: [Name] DESCRIPTION: [Description]

FILE NAME: [File Name] FILE NUMBER: [File Number]

U.S. ARMY CORPS OF ENGINEERS
ALASKA DISTRICT
JBER, ALASKA 99506-0988

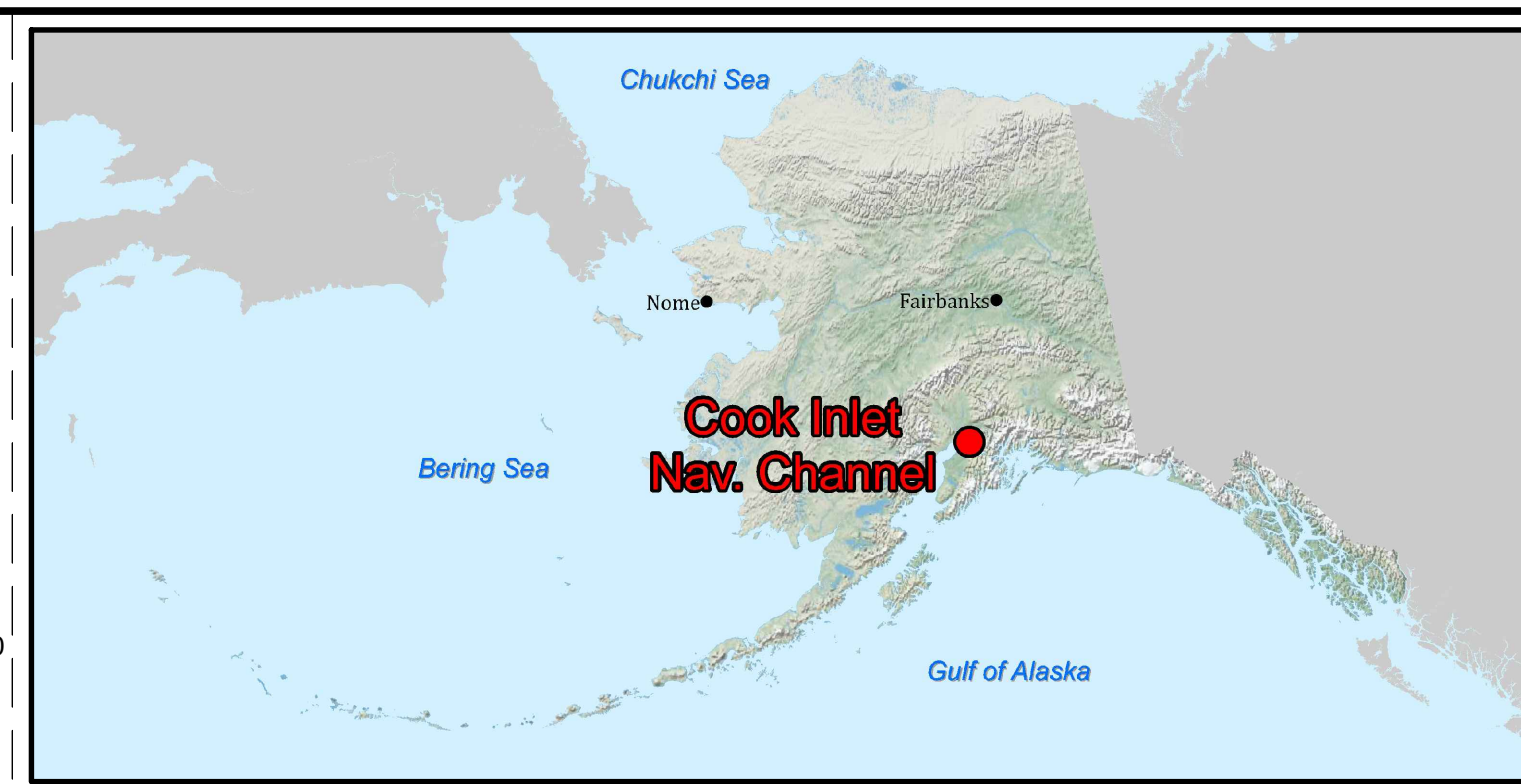
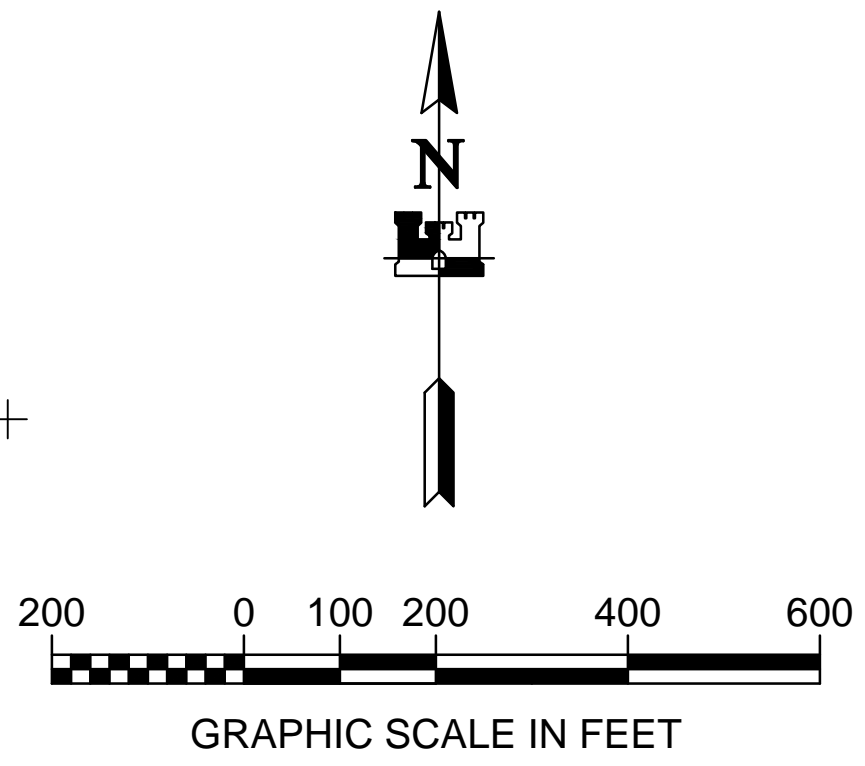
ANCHORAGE, ALASKA
2018-2020 MAINTENANCE DREDGING, COOK INLET
HYDROGRAPHIC SURVEY
PRE_20180502_CINC

SHEET IDENTIFICATION
V-101
Sheet 4 of 6



VOLUME COMPUTATIONS		
DREDGE AREA C	MLLW=0	CU. YD.
VOLUME AVAILABLE ABOVE	-38.0	146
VOLUME AVAILABLE ABOVE	-40.0	3,181
VOLUME AVAILABLE ABOVE	-43.0	105,843
DISPOSAL AREA		
VOLUME AVAILABLE BELOW	-45.0	1,453,963
TOTAL MAXIMUM VOLUME AVAILABLE IN AREA C (ABOVE -43.0)		105,843

ELEVATION COLOR LEGEND			
#	MIN. ELEV.	MAX. ELEV.	COLOR
1	-95.0	-75.0	Dark Purple
2	-75.0	-65.0	Purple
3	-65.0	-55.0	Dark Blue
4	-55.0	-45.0	Blue
5	-45.0	-44.0	Light Blue
6	-44.0	-43.0	Cyan
7	-43.0	-42.0	Teal
8	-42.0	-41.0	Green-Teal
9	-41.0	-40.0	Green
10	-40.0	-39.0	Light Green
11	-39.0	-38.0	Yellow-Green
12	-38.0	-37.0	Yellow
13	-37.0	-36.0	Orange-Yellow
14	-36.0	-35.0	Orange
15	-35.0	-30.0	Red-Orange
16	-30.0	-20.0	Red
17	-20.0	0.0	Dark Red



- NOTES**
- PRIMARY PROJECT HORIZONTAL CONTROL IS ALASKA STATE PLANE, ZONE 4, NAD83 NA2011 EPOCH 2010.00, IN US SURVEY FEET BASED ON A FULLY CONSTRAINED STATIC GPS NETWORK HOLDING THE PUBLISHED NGS STATIONS "VAN DUSEN" (PID TT4676) AND "LOOP 2 RM 3" (PID UV446) AND INCLUDED NGS CORS STATIONS "ANC2" (PID DL6498), "TBN" (PID DK4055), "TSEA" (PID A0952), AND "ZAN1" (PID DE9153). LOCAL PROJECT HORIZONTAL CONTROL IS ALASKA STATE PLANE, ZONE 4, NAD83, IN US SURVEY FEET HOLDING USAGE "TERRA 11" AS N 2,644,969.84, E 1,660,159.24.
 - VERTICAL CONTROL IS A TILTED-PLANE MLLW DATUM DERIVED IN 2013 AND BASED ON THE NOAA/NO TIDAL BENCH MARK LISTS "9455920, ANCHORAGE, KNIK ARM, COOK INLET, ALASKA" PUBLISHED 10/24/2011, "9455910, FIRE ISLAND, ALASKA" PUBLISHED 05/21/2004, AND "9455934, PORT MCKENZIE, COOK INLET, ALASKA" PUBLISHED 05/23/2003. THIS TILTED-PLANE MLLW IS BASED ON THE 1983-2001 TIDAL EPOCH AT THOSE STATIONS AND IS REFERENCED BY HOLDING GPS CONTROL STATION "TERRA 11" (PID B8C04) AS 80.48 FT.
 - VERTICAL TIES TO THE NATIONAL SPATIAL REFERENCE SYSTEM ARE BASED ON PUBLISHED NAVD83 (GEOID 128) ELEVATIONS HOLDING "TIDAL 16" (PID TT0713VMM135) AS 29.79 FT.
 - SOUNDINGS ARE IN U.S. SURVEY FEET AND ARE MINUS UNLESS OTHERWISE INDICATED.
 - BATHYMETRY WAS COLLECTED MAY 02, 2018, BY ETAC INC. SOUNDINGS WERE COLLECTED USING AN RSONIC 2024 MULTIBEAM ECHOSOUNDER OPERATING AT 200 KHZ WITH A 120-DEGREE SWATH-WIDTH WITH A 1.0' BEAM-WIDTH. SOUND VELOCITY THROUGH THE WATER COLUMN WAS DETERMINED USING AN AML BASE X SVP. SOUND VELOCITY WAS ALSO MEASURED AT THE SOUNDER HEAD USING A VALEPORT MINIVS. POSITIONING, VESSEL ATTITUDE, AND RTK TIDES WERE PROVIDED IN REAL TIME USING AN APPLANK POSNAV MV 6 WAVEMASTER POSITIONING SYSTEM RECEIVING RTK CORRECTS FROM A TRIMBLE SP885 RECEIVER SET AT CONTROL STATION "TERRA 11" LOCATED ATOP THE PORT OFFICE BUILDING. POST-PROCESS KINEMATIC CORRECTION USING POSPAC MMS 7.1 SOFTWARE WERE APPLIED TO DATA FOLLOWING ACQUISITION. VESSEL NAVIGATION, DATA ACQUISITION AND PROCESSING WERE PERFORMED USING QPS INTEGRATED SOFTWARE.
 - THIS DRAWING INDICATES GENERAL CONDITIONS AT THE TIME OF THE SURVEY.
 - MAP SOUNDINGS ARE BINNED AT 48 FEET (SHOAL-BIASED). COLOR ELEVATIONS ARE BINNED AT 12 FEET (SHOAL-BIASED). VOLUME SOUNDINGS ARE BINNED AT 3 FEET (MEAN VALUE).

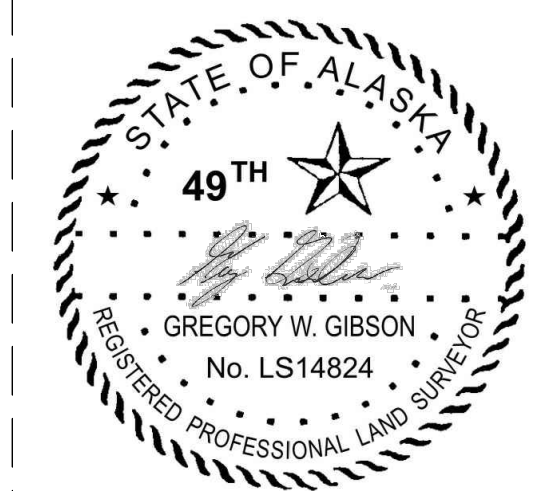
SURVEY CONTROL DATA				
STATION	NORTHING	EASTING	MLLW	DESCRIPTION
5920 THERMO 1 1988	2,642,784.70	1,660,183.87	37.3	AL MON (DISTURBED)
BM 12 1974	2,620,563.82	1,604,566.35	27.63	BRASS CAP
BM 5934 F	2,655,203.73	1,655,049.51	36.48	BRASS CAP
CRAIG	2,642,635.95	1,661,029.47	44.73	BRASS CAP
ETRAC-1	2,646,395.57	1,660,814.72	38.22	BRASS CAP
ETRAC-2	2,644,443.04	1,660,120.66	36.31	BRASS CAP
MIKE	2,645,987.73	1,661,875.48	48.38	BRASS CAP
NORTH END	2,646,649.84	1,660,584.80	41.51	USACE SBC
PORT 1989	2,639,934.29	1,656,925.43	39.64	AL MON
PORT MAC	2,655,563.46	1,654,968.22	41.51	BRASS CAP
RIFE 1960	2,620,502.19	1,604,162.70	29.99	BRASS CAP
SOUTH END	2,644,296.27	1,659,728.03	40.57	USACE SBC
TERRA 11 ARP	2,644,969.84	1,660,159.24	80.48	GPS ANTENNA REFERENCE POINT
TERRA 12 ARP	2,644,990.65	1,660,166.56	81.21	GPS ANTENNA REFERENCE POINT

DREDGE LIMITS		
CORNER#	NORTHING	EASTING
DL-28	2,632,288.21	1,628,921.02
DL-29	2,633,360.88	1,628,352.82
DL-30	2,628,708.65	1,619,570.25
DL-31	2,627,635.79	1,620,138.09
DS-5	2,626,323.49	1,614,048.61

DREDGE LIMITS		
CORNER#	NORTHING	EASTING
DS-6	2,626,323.49	1,616,673.28
DS-7	2,624,354.99	1,616,673.28
DS-8	2,624,354.99	1,614,619.08
DS-9	2,624,587.68	1,614,048.61

SURVEY LIMITS		
CORNER#	NORTHING	EASTING
SL-20	2,628,562.99	1,619,081.63
SL-21	2,627,313.36	1,619,743.03
SL-22	2,632,899.16	1,630,288.87
SL-23	2,634,148.83	1,629,627.56

SURVEY LIMITS		
CORNER#	NORTHING	EASTING
SL-24	2,626,423.49	1,613,948.61
SL-25	2,624,254.99	1,613,948.61
SL-26	2,624,254.99	1,616,773.28
SL-27	2,626,423.49	1,616,773.28



THIS HYDROGRAPHIC SURVEY WAS COMPLETED UNDER THE OVERSIGHT OF AN NSPS/THSOA CERTIFIED HYDROGRAPHER
 Gregory W. Gibson (317)

US Army Corps of Engineers - ALASKA DISTRICT

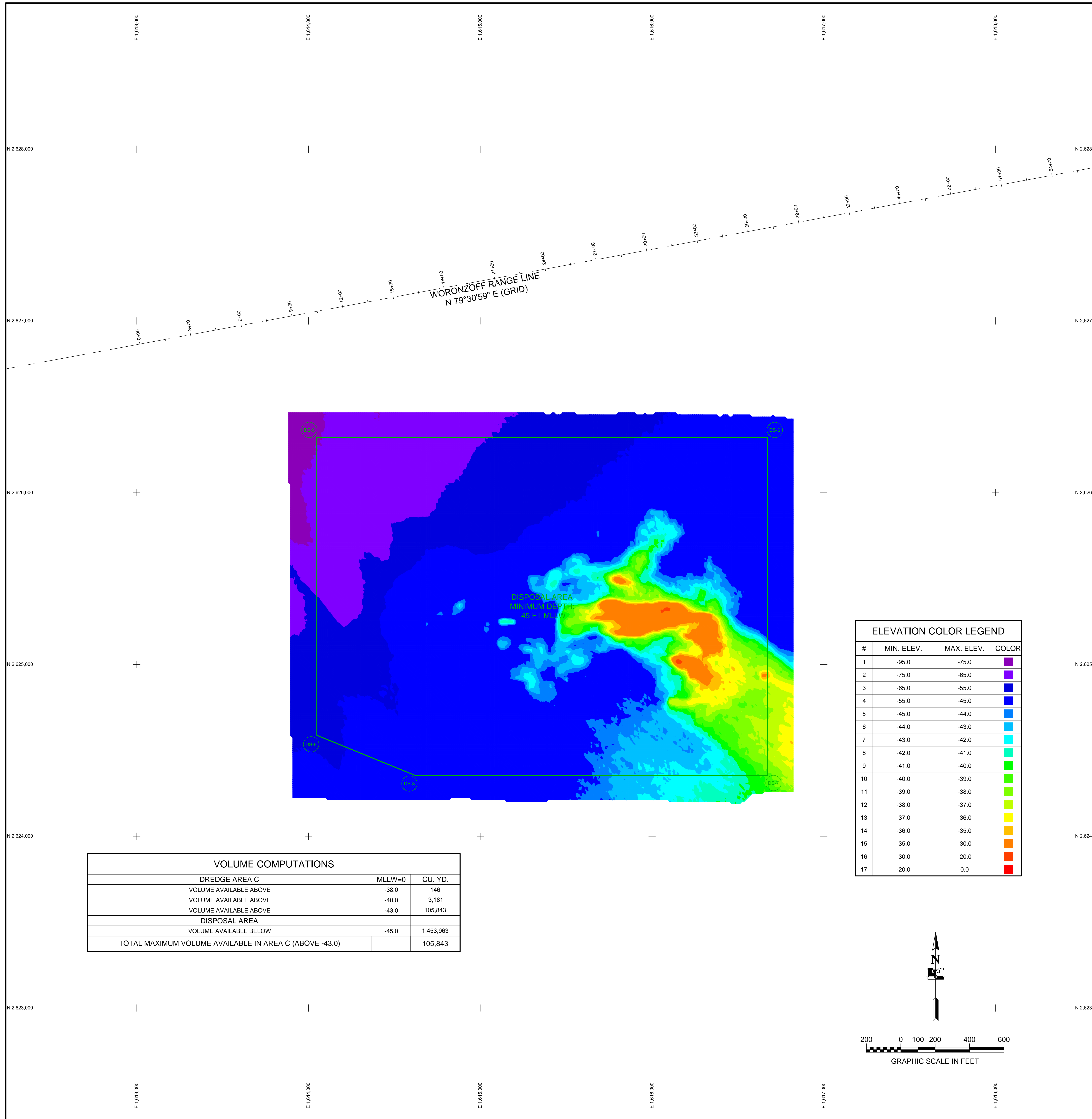
CONTRACT NO. W18HJFC0004
 CONTRACTOR: MANSION CONSTRUCTION CO.
 CITY: SEATTLE STATE: WASHINGTON
 RECOMMENDED BY: [Signature] APPROVED BY: [Signature]

DATE: []/ []/ []

FILE NAME: []
 FILE SIZE: []
 FILE DATE: []

ANCHORAGE, ALASKA
 2018-2020 MAINTENANCE DREDGING, COOK INLET
 HYDROGRAPHIC SURVEY
 PRE_20180502_CINC

SHEET IDENTIFICATION
 V-101
 Sheet 5 of 6



- NOTES**
- PRIMARY PROJECT HORIZONTAL CONTROL IS ALASKA STATE PLANE, ZONE 4, NAD83, NAD83 EPOCH 2010.00, IN US SURVEY FEET BASED ON A FULLY CONSTRAINED STATIC GPS NETWORK HOLDING THE PUBLISHED NGS STATIONS "VAN DUSEN" (PID T14678) AND "LOOP 2 RM 3" (PID UV446) AND INCLUDED NGS CORRS STATIONS "ANC2" (PID DK4055), "TSEA" (PID A10692), AND "ZAN1" (PID DE9153).
 - LOCAL PROJECT HORIZONTAL CONTROL IS ALASKA STATE PLANE, ZONE 4, NAD83, IN US SURVEY FEET HOLDING USACE "TERRA 11" AS N 2,644,969.84, E 1,660,159.24.
 - VERTICAL CONTROL IS A TILTED-PLANE MLLW DATUM DERIVED IN 2013 AND BASED ON THE NOAA/NOS TIDAL BENCH MARK LISTS "S455920, ANCHORAGE, KNIK ARM, COOK INLET, ALASKA" PUBLISHED 10/24/2011, "S455912, FIRE ISLAND, ALASKA" PUBLISHED 05/21/2004, AND "S455934, PORT MACKENZIE, COOK INLET, ALASKA" PUBLISHED 05/23/2003. THIS TILTED-PLANE MLLW IS BASED ON THE 1983-2001 TIDAL EPOCH AT THOSE STATIONS AND IS REFERENCED BY HOLDING GPS CONTROL STATION "TERRA 11" (PID B8C104) AS 60.48 FT.
 - VERTICAL TIES TO THE NATIONAL SPATIAL REFERENCE SYSTEM ARE BASED ON PUBLISHED NAVD83 (GEOID 12B) ELEVATIONS HOLDING "TIDAL 16" (PID T10713/VMH1335) AS 29.73 FT.
 - SOUNDINGS ARE IN U.S. SURVEY FEET AND ARE MINUS UNLESS OTHERWISE INDICATED.
 - BATHYMETRY WAS COLLECTED MAY 02, 2018, BY ETRAC INC. SOUNDINGS WERE COLLECTED USING AN RSONIC 2024 MULTIBEAM ECHOSOUNDER OPERATING AT 200 KHZ WITH A 120-DEGREE SWATH-WIDTH WITH A 1.0' BEAM-WIDTH. SOUND VELOCITY THROUGH THE WATER COLUMN WAS DETERMINED USING AN AML BASE X SVP. SOUND VELOCITY WAS ALSO MEASURED AT THE SOUNDER HEAD USING A VALEPORT MINUS. POSITIONING, VESSEL ATTITUDE, AND RTK TIDES WERE PROVIDED IN REAL TIME USING AN APLANK POSMV MV US WAVEMASTER POSITIONING SYSTEM RECEIVING RTK CORRECTS FROM A TRIMBLE SP855 RECEIVER SET AT CONTROL STATION "TERRA 11" LOCATED ATOP THE PORT OFFICE BUILDING. POST-PROCESS KINEMATIC CORRECTION USING POSPAC MMS 7.1 SOFTWARE WERE APPLIED TO DATA FOLLOWING ACQUISITION. VESSEL NAVIGATION, DATA ACQUISITION AND PROCESSING WERE PERFORMED USING GPS INTEGRATED SOFTWARE.
 - THIS DRAWING INDICATES GENERAL CONDITIONS AT THE TIME OF THE SURVEY.
 - MAP SOUNDINGS ARE BINNED AT 48 FEET (SHOAL-BIASED). COLOR ELEVATIONS ARE BINNED AT 12 FEET (SHOAL-BIASED). VOLUME SOUNDINGS ARE BINNED AT 3 FEET (MEAN VALUE).

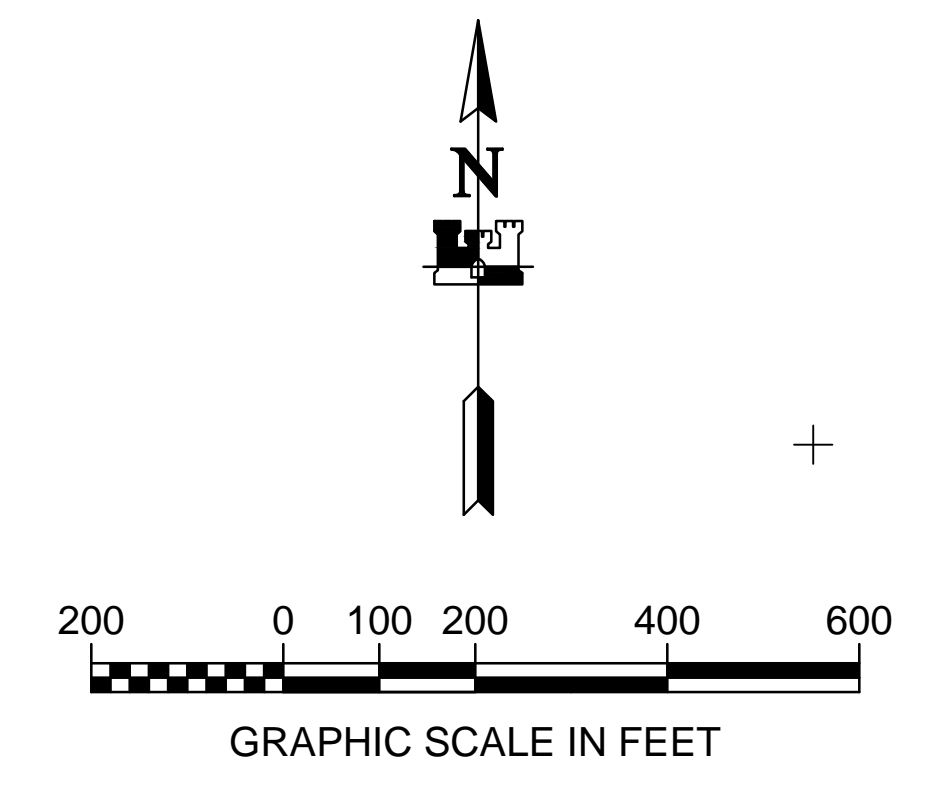
SURVEY CONTROL DATA				
STATION	NORTHING	EASTING	MLLW	DESCRIPTION
5920 THERMO 1 1988	2,642,784.70	1,660,183.87	37.3	AL MON (DISTURBED)
BM 12 1974	2,620,563.82	1,604,566.35	27.63	BRASS CAP
BM 5934 F	2,655,203.73	1,655,049.51	36.48	BRASS CAP
CRAIG	2,642,635.95	1,661,029.47	44.73	BRASS CAP
ETRAC-1	2,646,395.57	1,660,814.72	38.22	BRASS CAP
ETRAC-2	2,644,443.04	1,660,120.66	36.31	BRASS CAP
MIKE	2,645,987.73	1,661,875.48	48.38	BRASS CAP
NORTH END	2,646,649.84	1,660,584.80	41.51	USACE SBC
PORT 1989	2,639,934.29	1,656,925.43	39.64	AL MON
PORT MAC	2,655,563.46	1,654,968.22	41.51	BRASS CAP
RIFE 1960	2,620,502.19	1,604,162.70	29.99	BRASS CAP
SOUTH END	2,644,296.27	1,659,728.03	40.57	USACE SBC
TERRA 11 ARP	2,644,969.84	1,660,159.24	80.48	GPS ANTENNA REFERENCE POINT
TERRA 12 ARP	2,644,990.65	1,660,166.56	81.21	GPS ANTENNA REFERENCE POINT

DREDGE LIMITS			DREDGE LIMITS		
CORNER#	NORTHING	EASTING	CORNER#	NORTHING	EASTING
DL-28	2,632,288.21	1,628,921.02	DS-6	2,626,323.49	1,616,673.28
DL-29	2,633,360.88	1,628,352.82	DS-7	2,624,354.99	1,616,673.28
DL-30	2,628,708.65	1,619,570.25	DS-8	2,624,354.99	1,614,619.08
DL-31	2,627,635.79	1,620,138.09	DS-9	2,624,587.68	1,614,048.61
DS-5	2,626,323.49	1,614,048.61			

SURVEY LIMITS			SURVEY LIMITS		
CORNER#	NORTHING	EASTING	CORNER#	NORTHING	EASTING
SL-20	2,628,562.99	1,619,081.63	SL-24	2,626,423.49	1,613,948.61
SL-21	2,627,313.36	1,619,743.03	SL-25	2,624,254.99	1,613,948.61
SL-22	2,632,899.16	1,630,288.87	SL-26	2,624,254.99	1,616,773.28
SL-23	2,634,148.83	1,629,627.56	SL-27	2,626,423.49	1,616,773.28

VOLUME COMPUTATIONS		
DREDGE AREA C	MLLW=0	CU. YD.
VOLUME AVAILABLE ABOVE	-38.0	146
VOLUME AVAILABLE ABOVE	-40.0	3,181
VOLUME AVAILABLE ABOVE	-43.0	105,843
DISPOSAL AREA		
VOLUME AVAILABLE BELOW	-45.0	1,453,963
TOTAL MAXIMUM VOLUME AVAILABLE IN AREA C (ABOVE -43.0)		105,843

ELEVATION COLOR LEGEND			
#	MIN. ELEV.	MAX. ELEV.	COLOR
1	-95.0	-75.0	Purple
2	-75.0	-65.0	Dark Purple
3	-65.0	-55.0	Blue
4	-55.0	-45.0	Dark Blue
5	-45.0	-44.0	Light Blue
6	-44.0	-43.0	Cyan
7	-43.0	-42.0	Light Green
8	-42.0	-41.0	Green
9	-41.0	-40.0	Light Green
10	-40.0	-39.0	Yellow-Green
11	-39.0	-38.0	Yellow
12	-38.0	-37.0	Light Yellow
13	-37.0	-36.0	Yellow
14	-36.0	-35.0	Orange
15	-35.0	-30.0	Dark Orange
16	-30.0	-20.0	Red
17	-20.0	0.0	Dark Red



US Army Corps of Engineers - ALASKA DISTRICT

CONTRACT NO. W71013-18-C-0001
 CONTRACTOR: MANSION CONSTRUCTION CO.
 CITY: SEATTLE, STATE: WASHINGTON
 APPROVED: _____ DATE: _____
 RECOMMENDED: _____

ANCHORAGE, ALASKA
 2018-2020 MAINTENANCE DREDGING, COOK INLET
 HYDROGRAPHIC SURVEY
 PRE_20180502_CINC

SHEET IDENTIFICATION
 V-101
 Sheet 6 of 6

THIS HYDROGRAPHIC SURVEY WAS COMPLETED UNDER THE OVERSIGHT OF AN NSPS/THSOA CERTIFIED HYDROGRAPHER

Gregory W. Gibson
 Gregory W. Gibson (317)

