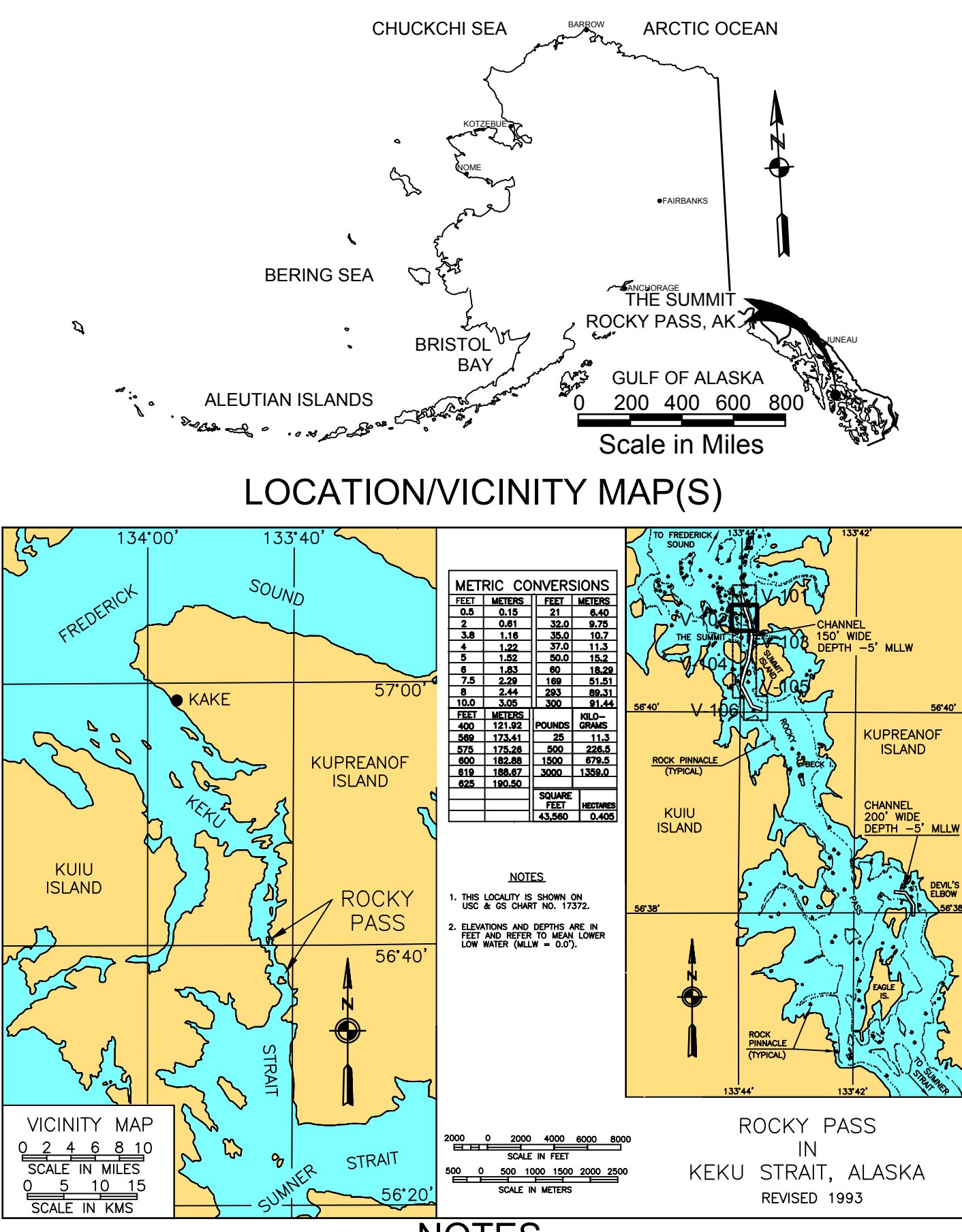


VOLUME COMPUTATIONS	
PROJECT DEPTH - 5.0'	CY
AVAILABLE TO PROJECT DEPTH (-5.0')	317
AVAILABLE BETWEEN PROJECT DEPTH (-5.0') AND MAX PAY DEPTH (-6.0')	1,965
AVAILABLE WITHIN SIDE SLOPES (3:1)	332
TOTAL MATERIAL AVAILABLE	2,614



NAVIGATION AIDS			
USCG NO.	NORTHING	EASTING	DESCRIPTION
23306.6	1,764,634.00	2,673,037.00	DAYBEACON 23 - SG ON PILE
23306.7	1,765,775.50	2,672,308.90	DAYBEACON 25 - SG ON PILE
23306.8	1,767,194.00	2,672,506.30	DAYBEACON 26 - TR ON PILE
23306.9	1,772,457.90	2,671,777.10	DAYBEACON 29 - SG ON PILE
23306.65	1,765,266.60	2,672,936.00	DAYBEACON 24 - TR ON PILE
23306.83	1,769,141.30	2,672,916.00	DAYBEACON 26A - TR ON PILE
23306.85	1,770,948.30	2,672,374.10	DAYBEACON 27 - SG ON PILE
23306.86	1,771,492.50	2,672,306.40	DAYBEACON 28 - TR ON PILE
23307	1,773,344.00	2,671,632.50	DAYBEACON 30 - TR ON PILE

PROJECT LIMITS (CENTERLINE)		
CORNER#	NORTHING	EASTING
PL-1	1,722,720.44	2,671,971.84
PL-2	1,771,463.35	2,672,190.30
PL-3	1,770,714.97	2,672,599.36
PL-4	1,769,783.12	2,672,806.62
PL-5	1,768,148.33	2,672,691.37
PL-6	1,767,339.84	2,672,364.76
PL-7	1,766,450.98	2,672,230.21
PL-8	1,765,022.34	2,672,948.20
PL-9	1,764,787.46	2,673,844.94



- NOTES**
- HORIZONTAL CONTROL IS ALASKA STATE PLANE, ZONE 1, NAD83, IN US SURVEY FEET, PREVIOUSLY ESTABLISHED ON SURVEY DATED MAY 8-10, 2007, BASED ON A STATIC GPS NETWORK HOLDING THE NOS EPOCH 2003.00 CORRS ARP VALUES FOR "JUNEAU WAS 1" (NGS PID D14367), "BORRKA ISLAND 1" (NGS PID A15022), AND "LEVEL ISLAND 1" (NGS PID A14403). HARBOR CONTROL WAS TRANSFORMED INTO THE NOS EPOCH 2003.00 DATUM HOLDING USACE SBC "YOU 1927" AS N 1,774,322.55, E 2,673,005.64 AND USACE DOMEID BC "SUMMIT-2 2001" AS N 1,772,192.79, E 2,671,484.38. CURRENT SURVEY WAS BASED ON RECORD VALUES HOLDING CONTROL MONUMENTS "SUMMIT-3" AS N 1,770,295.49, E 2,672,487.49 AND "CHARLIE" AS N 1,770,237.18, E 2,672,408.92.
 - VERTICAL CONTROL IS MEAN LOWER LOW WATER (MLLW=0.0'), BASED ON THE NOAANS TIDAL BENCH MARK LIST "945 1349 THE SUMMIT, N.W. SUMMIT ISLAND, ALASKA". THIS TIDAL DATUM IS BASED ON THE 1983-2001 TIDAL EPOCH AND IS REFERENCED BY HOLDING NOS TIDAL BENCHMARK "945 1349 TIDAL 1" AS 18.12' AND NOS TIDAL BENCHMARK "945 1349 TIDAL 3" AS 15.55'. THIS TIDAL DATUM HAS A PUBLICATION DATE OF 09/17/2008.
 - VERTICAL TIES TO THE NATIONAL SPATIAL REFERENCE SYSTEM ARE BASED ON PUBLISHED NAVD83 ELEVATIONS HOLDING NOAANS TIDAL BENCHMARK "945 1349 TIDAL 1" AS 14.80' (PID BBBG28).
 - SOUNDINGS ARE IN FEET AND ARE MINUS UNLESS OTHERWISE INDICATED.
 - THE EXISTING PROJECT CONSISTS OF THE SUMMIT LOCATED IN ROCKY PASS, ALASKA.
 - THE SURVEY WAS CONDUCTED ON JULY 25, 2013. HYDROGRAPHIC SOUNDING DATA WAS COLLECTED USING AN ODOM ESS MULTI-BEAM ECHOSOUNDER (200KHZ, 120-DEGREE SWATH WIDTH WITH 480, 0.75 DEGREE BEAMS). POSITIONING AND VESSEL ATTITUDE WERE PROVIDED IN REAL TIME USING A TRIMBLE 461 RTK GPS RECEIVER OPERATING ON KINEMATIC CORRECTORS BROADCAST FROM A TRIMBLE R6 RTK BASE RECEIVER SET AT CONTROL STATION, "SUMMIT-3". SOUND VELOCITY PROFILE WAS PROVIDED USING AN ODOM DIGI-BAR PRO, AND WAS PROVIDED IN REAL TIME AT THE SOUNDER HEAD USING AN ODOM DIGI-BAR V. DATA COLLECTION AND NAVIGATION WERE PERFORMED USING HYPPACK HYPSWEEP (2013) SOFTWARE. MULTI-BEAM SURVEY DATA WAS POST-PROCESSED USING HYPPACK HYPACKSWEEP (2013) SOFTWARE.
 - HEAVY AREAS OF KELP SHOULD BE EXPECTED THROUGHOUT THE SURVEY AREA, PARTICULARLY AT LOWER STAGES OF THE TIDE.
 - ALL NAVIGATION AIDS APPEARED TO BE IN GOOD CONDITION AND IN THEIR SPECIFIED LOCATION.
 - THIS DRAWING INDICATES GENERAL CONDITIONS AT THE TIME OF THE SURVEY.
 - MAP SOUNDINGS ARE BINNED AT 12 FEET AND ARE NEAREST CELL CENTER VALUE. VOLUME SOUNDINGS ARE BINNED AT 3 FEET AND ARE AVERAGE CELL VALUE.

SURVEY CONTROL DATA				
STATION	NORTHING	EASTING	MLLW	DESCRIPTION
1349-5 2006	1,770,667.49	2,672,034.91	16.37	3.25 INCH NOS BC
ABLE 1958	1,772,781.08	2,672,206.09		NOT SURVEYED - SEARCHED FOR - LOST (REMOVE)
BAKER 1958	1,770,387.60	2,672,875.82	17.75	STEEL ROD
CHARLIE 1958	1,770,237.18	2,672,408.92	17.02	BRIDGE SPIKE IN BEDROCK
DOG 1958	1,768,794.28	2,672,899.38	17.01	5/8 INCH CONC. FILLED GALV. PIPE WITH TACK
EASY 1958	1,768,221.13	2,672,442.11		DESTROYED
FAST 1927	1,769,882.42	2,672,950.21		NOT SURVEYED - SEARCHED FOR - LOST (REMOVE)
FOX 1958	1,767,196.06	2,672,511.32		NOT SURVEYED - OBLITERATED (UNDER NAV AID FOUNDATION)
GEORGE 1958	1,766,531.37	2,671,774.80	18.40	BRIDGE SPIKE IN BEDROCK
MOST 1927	1,767,184.21	2,672,497.52	10.97	3.25 INCH USCGS SBC HYDROGRAPHIC STATION
R-6 1977	1,770,967.42	2,673,044.51	19.11	3.25 INCH DBC
R-7 1977	1,770,129.56	2,672,241.98	11.54	3.25 INCH DBC
R-8 1977	1,770,245.29	2,672,872.62	19.62	3.25 INCH DBC
R-9 1977	1,768,795.03	2,672,903.85	17.68	3.25 INCH DBC
RKY-2 1973	1,766,666.54	2,671,823.30	19.10	USACE SBC
RKY-3 1973	1,767,012.35	2,672,541.29		NOT SURVEYED - SEARCHED FOR - LOST (REMOVE)
RKY-4 1973	1,767,470.01	2,672,575.32		NOT SURVEYED - SEARCHED FOR - LOST (REMOVE)
SUMMIT-1 2001	1,769,152.43	2,672,939.01	17.83	3.25 INCH DBC
SUMMIT-2 2001	1,772,192.79	2,671,484.38	16.73	2.35 INCH DBC
SUMMIT-3 2007	1,770,295.49	2,672,487.76	18.15	3.25 INCH DBC
YOU 1927	1,764,322.55	2,673,005.64	16.54	3.25 INCH USCGS SBC HYDROGRAPHIC STATION

VOLUME COMPUTATIONS	
PROJECT DEPTH - 5.0'	CY
AVAILABLE TO PROJECT DEPTH (-5.0')	317
AVAILABLE BETWEEN PROJECT DEPTH (-5.0') AND MAX PAY DEPTH (-6.0')	1,965
AVAILABLE WITHIN SIDE SLOPES (3:1)	332
TOTAL MATERIAL AVAILABLE	2,614

US Army Corps of Engineers
ALASKA DISTRICT

CONTRACT NO. W19126-AUG-2013
CONTRACTOR: HUGHES & ASSOCIATES
CITY: WASILLA
STATE: ALASKA
PROJECT: ROCKY PASS IN KIU STRAIT, ALASKA
DATE: JULY 22 - 27, 2013

CHECKED BY: GHI
DRAWN BY: MXXX
SCALE: AS SHOWN
FILE NAME: THE SUMMIT 2013.PCS - FINAL.DWG

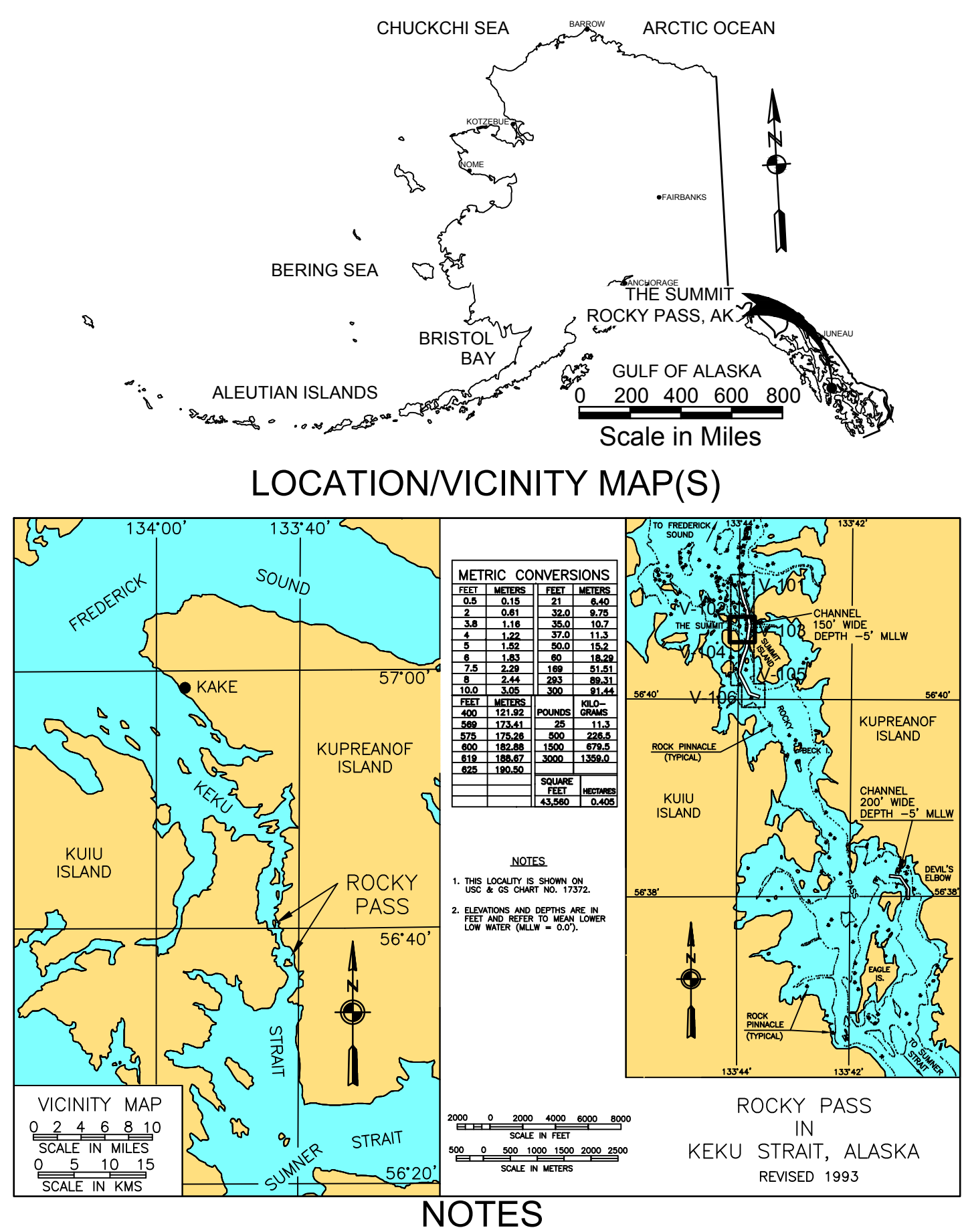
U.S. ARMY CORPS OF ENGINEERS
ALASKA DISTRICT
JBER, ALASKA 99506-0988

HUGHES & ASSOCIATES
WASILLA, ALASKA 99664

ROCKY PASS IN KIU STRAIT, ALASKA
THE SUMMIT
PROJECT CONDITION SURVEY
JULY 22 - 27, 2013

SHEET IDENTIFICATION
V-102

Sheet 2 of 12



1. HORIZONTAL CONTROL IS ALASKA STATE PLANE, ZONE 1, NAD83, IN US SURVEY FEET, PREVIOUSLY ESTABLISHED ON SURVEY DATED MAY 8-10, 2007, BASED ON A STATIC GPS NETWORK HOLDING THE NOS EPOCH 2003.00 COR ARP VALUES FIXED FOR "JUNEAU WAS 1" (NGS PID D14367), "BORRKA ISLAND 1" (NGS PID A1022), AND "LEVEL ISLAND 1" (NGS PID A1430). HARBOR CONTROL WAS TRANSFORMED INTO THE NOS EPOCH 2003.00 DATUM HOLDING USACE SBC "YOU 1927" AS N 1,764,322.55, E 2,673,005.64 AND USACE COMED 9C "SUMMIT-2 2001" AS N 1,772,192.79, E 2,671,484.38. CURRENT SURVEY WAS BASED ON RECORD VALUES HOLDING CONTROL MONUMENTS "SUMMIT-3" AS N 1,770,295.49, E 2,672,487.49 AND "CHARLIE" AS N 1,770,237.18, E 2,672,408.92.
2. VERTICAL CONTROL IS MEAN LOWER LOW WATER (MLLW=0'), BASED ON THE NOAA'S TIDAL BENCH MARK LIST: "945 1349 THE SUMMIT, N.W. SUMMIT ISLAND, ALASKA". THIS TIDAL DATUM IS BASED ON THE 1983-2001 TIDAL EPOCH AND IS REFERENCED BY HOLDING NOS TIDAL BENCHMARK "945 1349 TIDAL 1" AS 18.12' AND NOS TIDAL BENCHMARK "945 1349 TIDAL 3" AS 15.55'. THIS TIDAL DATUM HAS A PUBLICATION DATE OF 09/17/2008.
3. VERTICAL TIES TO THE NATIONAL SPATIAL REFERENCE SYSTEM ARE BASED ON PUBLISHED NAVD83 ELEVATIONS HOLDING NOAA'S TIDAL BENCHMARK "945 1349 TIDAL 1" AS 14.80' (PI D BBBG28).
4. SOUNDINGS ARE IN FEET AND ARE MINUS UNLESS OTHERWISE INDICATED.
5. THE EXISTING PROJECT CONSISTS OF THE SUMMIT LOCATED IN ROCKY PASS, ALASKA.
6. THE SURVEY WAS CONDUCTED ON JULY 25, 2013. HYDROGRAPHIC SOUNDING DATA WAS COLLECTED USING AN ODOM ESS MULTI-BEAM ECHOSOUNDER (200KHZ, 120-DEGREE SWATH-WIDTH WITH 480, 0.75 DEGREE BEAMS). POSITIONING AND VESSEL ATTITUDE WERE PROVIDED IN REAL TIME USING A TRIMBLE 461 RTK GPS RECEIVER OPERATING ON KINEMATIC CORRECTORS BROADCAST FROM A TRIMBLE R6 RTK BASE RECEIVER SET AT CONTROL STATION, "SUMMIT-3". SOUND VELOCITY PROFILE WAS PROVIDED USING AN ODOM DIGI-BAR V. DATA COLLECTION AND NAVIGATION WERE PERFORMED USING HYPACK HYDROSWEEP (2013) SOFTWARE. MULTI-BEAM SURVEY DATA WAS POST-PROCESSED USING HYPACK HYDROSWEEP (2013) SOFTWARE.
7. HEAVY AREAS OF KELP SHOULD BE EXPECTED THROUGHOUT THE SURVEY AREA, PARTICULARLY AT LOWER STAGES OF THE TIDE.
8. ALL NAVIGATION AIDS APPEARED TO BE IN GOOD CONDITION AND IN THEIR SPECIFIED LOCATION.
9. THIS DRAWING INDICATES GENERAL CONDITIONS AT THE TIME OF THE SURVEY.
10. MAP SOUNDINGS ARE BINNED AT 12 FEET AND ARE NEAREST CELL CENTER VALUE. VOLUME SOUNDINGS ARE BINNED AT 3 FEET AND ARE AVERAGE CELL VALUE.

SURVEY CONTROL DATA				
STATION	NORTHING	EASTING	MLLW	DESCRIPTION
1349-5 2006	1,770,667.49	2,672,034.91	16.37	3.25 INCH NOS BC
ABLE 1958	1,772,781.08	2,672,206.09		NOT SURVEYED - SEARCHED FOR - LOST (REMOVE)
BAKER 1958	1,770,387.60	2,672,875.82	17.75	STEEL ROD
CHARLIE 1958	1,770,237.18	2,672,408.92	17.02	BRIDGE SPIKE IN BEDROCK
DOG 1958	1,768,794.28	2,672,899.38	17.01	5/8 INCH CONC. FILLED GALV. PIPE WITH TACK
EASY 1958	1,768,221.13	2,672,442.11		DESTROYED
FAST 1927	1,769,882.42	2,672,950.21		NOT SURVEYED - SEARCHED FOR - LOST (REMOVE)
FOX 1958	1,767,196.06	2,672,511.32		NOT SURVEYED - OBLITERATED (UNDER NAV AID FOUNDATION)
GEORGE 1958	1,766,531.37	2,671,774.80	18.40	BRIDGE SPIKE IN BEDROCK
MOST 1927	1,767,184.21	2,672,497.52	10.97	3.25 INCH USCGS SBC HYDROGRAPHIC STATION
R-6 1977	1,770,967.42	2,673,044.51	19.11	3.25 INCH DBC
R-7 1977	1,770,129.56	2,672,241.98	11.54	3.25 INCH DBC
R-8 1977	1,770,245.29	2,672,872.62	19.62	3.25 INCH DBC
R-9 1977	1,768,795.03	2,672,903.85	17.68	3.25 INCH DBC
RKY-2 1973 2007	1,766,666.54	2,671,823.30	19.10	USACE SBC
RKY-3 1973	1,767,012.35	2,672,541.29		NOT SURVEYED - SEARCHED FOR - LOST (REMOVE)
RKY-4 1973	1,767,470.01	2,672,575.32		NOT SURVEYED - SEARCHED FOR - LOST (REMOVE)
SUMMIT-1 2001	1,769,152.43	2,672,939.01	17.83	3.25 INCH DBC
SUMMIT-2 2001	1,772,192.79	2,671,484.38	16.73	2.35 INCH DBC
SUMMIT-3 2007	1,770,295.49	2,672,487.76	18.15	3.25 INCH DBC
YOU 1927	1,764,322.55	2,673,005.64	16.54	3.25 INCH USCGS SBC HYDROGRAPHIC STATION

VOLUME COMPUTATIONS	
PROJECT DEPTH - 5.0'	CY
AVAILABLE TO PROJECT DEPTH (-5.0')	317
AVAILABLE BETWEEN PROJECT DEPTH (-5.0') AND MAX PLY DEPTH (-6.0')	1,965
AVAILABLE WITHIN SIDE SLOPES (3:1)	332
TOTAL MATERIAL AVAILABLE	2,614

US Army Corps of Engineers
of Engineers
ALASKA DISTRICT

CONTRACT NO. W19HBA-AUG-2013
CONTRACTOR: HUGHES & ASSOCIATES
CITY: WASILLA
STATE: ALASKA
PROJECT: ROCKY PASS
SHEET: 3 OF 12

DATE: 10/10/2013
SURVEY NO.: 3183-13
DRAWN BY: JBER ALASKA 9806-0988
CHECKED BY: JBER
FILE NAME: ROCKY PASS 2013.PCS - FINAL.DWG
SCALE: 1"=1000'
SIZE: A

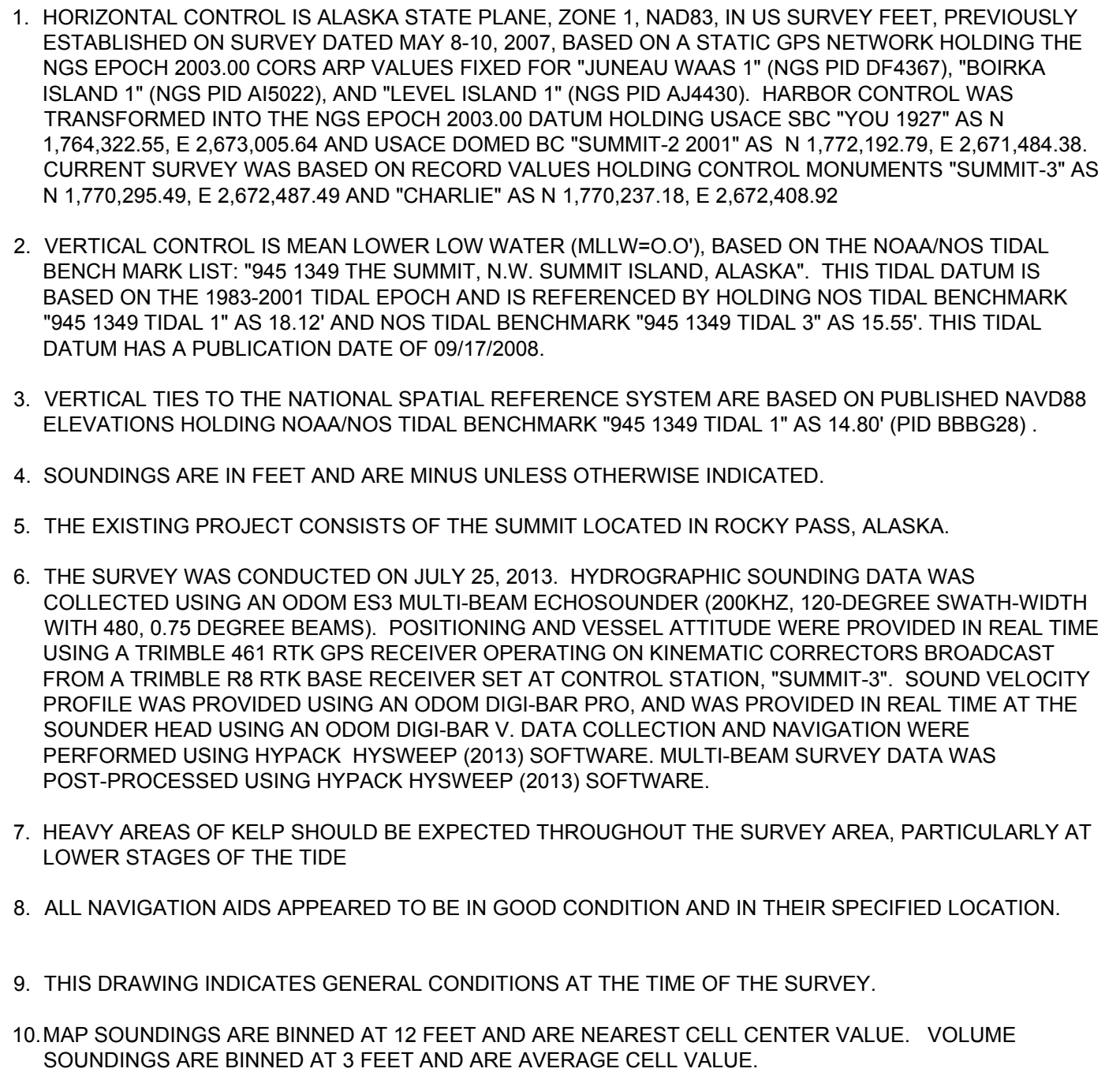
DATE: 10/10/2013
SURVEY NO.: 3183-13
DRAWN BY: JBER ALASKA 9806-0988
CHECKED BY: JBER
FILE NAME: ROCKY PASS 2013.PCS - FINAL.DWG
SCALE: 1"=1000'
SIZE: A

DATE: 10/10/2013
SURVEY NO.: 3183-13
DRAWN BY: JBER ALASKA 9806-0988
CHECKED BY: JBER
FILE NAME: ROCKY PASS 2013.PCS - FINAL.DWG
SCALE: 1"=1000'
SIZE: A

ROCKY PASS IN Keku Strait, Alaska
THE SUMMIT
PROJECT CONDITION SURVEY
JULY 22 - 27, 2013

SHEET IDENTIFICATION
V-103

Sheet 3 of 12

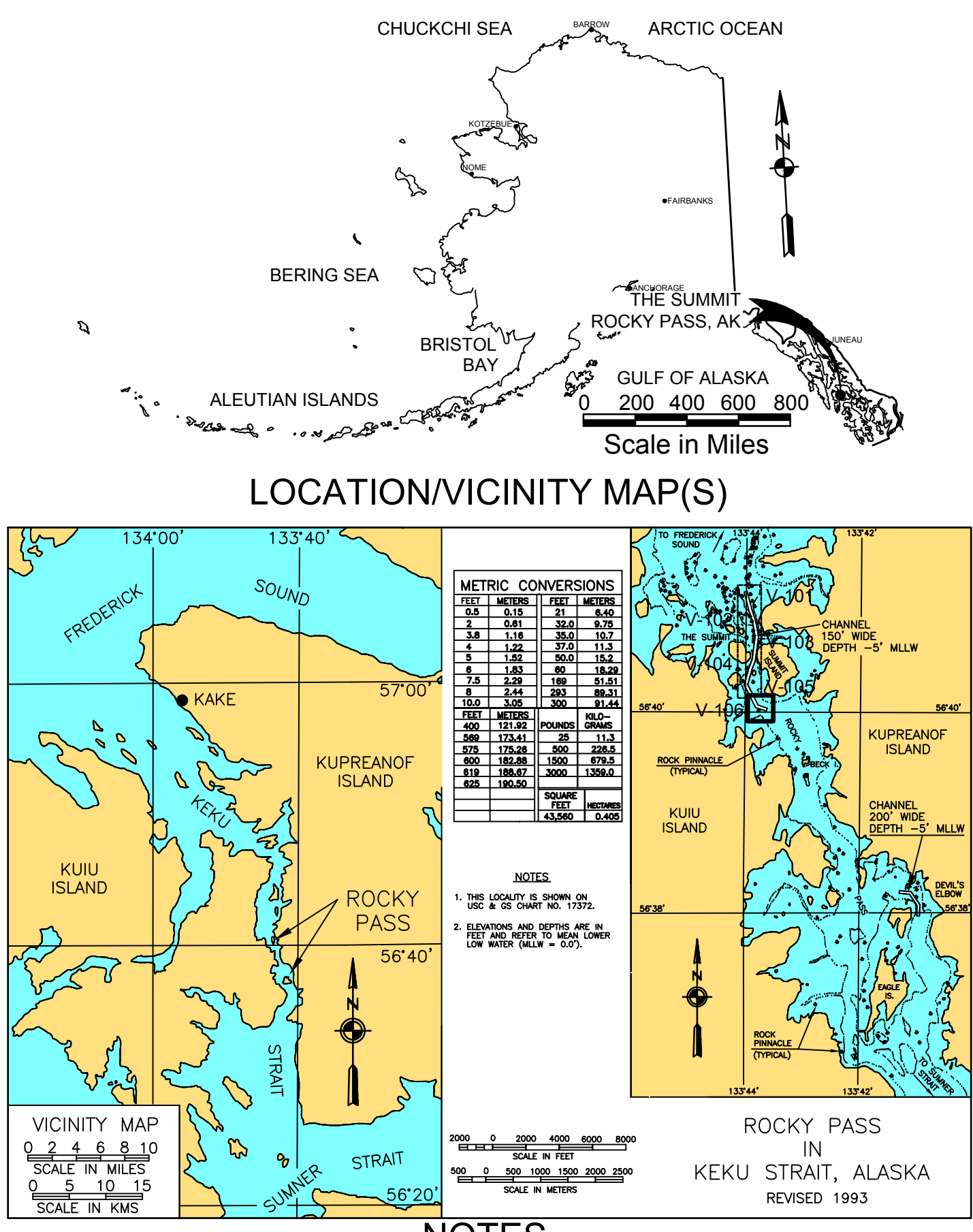


VOLUME COMPUTATIONS	
PROJECT DEPTH - 5.0'	CY
AVAILABLE TO PROJECT DEPTH (-5.0')	317
AVAILABLE BETWEEN PROJECT DEPTH (-5.0') AND MAX PAY DEPTH (-6.0')	1,965
AVAILABLE WITHIN SIDE SLOPES (3:1)	332
TOTAL MATERIAL AVAILABLE	2,614



NAVIGATION AIDS			
USCG NO.	NORTHING	EASTING	DESCRIPTION
23306.6	1,764,634.00	2,673,037.00	DAYBEACON 23 - SG ON PILE
23306.7	1,765,775.50	2,672,308.90	DAYBEACON 25 - SG ON PILE
23306.8	1,767,194.00	2,672,506.30	DAYBEACON 26 - TR ON PILE
23306.9	1,772,457.90	2,671,777.10	DAYBEACON 29 - SG ON PILE
23306.65	1,765,266.60	2,672,936.00	DAYBEACON 24 - TR ON PILE
23306.83	1,769,141.30	2,672,916.00	DAYBEACON 26A - TR ON PILE
23306.85	1,770,948.30	2,672,374.10	DAYBEACON 27 - SG ON PILE
23306.86	1,771,492.50	2,672,306.40	DAYBEACON 28 - TR ON PILE
23307	1,773,344.00	2,671,632.50	DAYBEACON 30 - TR ON PILE

PROJECT LIMITS (CENTERLINE)		
CORNER#	NORTHING	EASTING
PL-1	1,722,720.44	2,671,971.84
PL-2	1,771,463.35	2,672,190.30
PL-3	1,770,714.97	2,672,599.36
PL-4	1,769,783.12	2,672,906.62
PL-5	1,768,148.33	2,672,691.37
PL-6	1,767,339.84	2,672,364.76
PL-7	1,766,450.98	2,672,230.21
PL-8	1,765,022.34	2,672,948.20
PL-9	1,764,787.46	2,673,644.94



1. HORIZONTAL CONTROL IS ALASKA STATE PLANE, ZONE 1, NAD83, IN US SURVEY FEET, PREVIOUSLY ESTABLISHED ON SURVEY DATED MAY 8-10, 2007, BASED ON A STATIC GPS NETWORK HOLDING THE NOS EPOCH 2003 NOS CORRS ARP VALUES FIXED FOR JUNEAU WAS 1" (NGS PID DT4367), BORRKA ISLAND 1" (NGS PID A5022), AND "LEVEL ISLAND 1" (NGS PID A4430). HARBOR CONTROL WAS TRANSFORMED INTO THE NOS EPOCH 2003.00 DATUM HOLDING USACE SBC "YOU 1927" AS N 1,764,322.55, E 2,673,005.64 AND USACE COMED 9C "SUMMIT-2 2001" AS N 1,772,192.79, E 2,671,484.38. CURRENT SURVEY WAS BASED ON RECORD VALUES HOLDING CONTROL MONUMENTS "SUMMIT-3" AS N 1,770,295.49, E 2,672,487.49 AND "CHARLIE" AS N 1,770,237.18, E 2,672,408.92.
2. VERTICAL CONTROL IS MEAN LOWER LOW WATER (MLLW=0.0'), BASED ON THE NOAA'S TIDAL BENCH MARK LIST: "945 1349 THE SUMMIT, N.W. SUMMIT ISLAND, ALASKA". THIS TIDAL DATUM IS BASED ON THE 1983-2001 TIDAL EPOCH AND IS REFERENCED BY HOLDING NOS TIDAL BENCHMARK "945 1349 TIDAL 1" AS 18.12' AND NOS TIDAL BENCHMARK "945 1349 TIDAL 3" AS 15.55'. THIS TIDAL DATUM HAS A PUBLICATION DATE OF 09/17/2008.
3. VERTICAL TIES TO THE NATIONAL SPATIAL REFERENCE SYSTEM ARE BASED ON PUBLISHED NAVD83 ELEVATIONS HOLDING NOAA'S TIDAL BENCHMARK "945 1349 TIDAL 1" AS 14.80' (PID BBBG28).
4. SOUNDINGS ARE IN FEET AND ARE MINUS UNLESS OTHERWISE INDICATED.
5. THE EXISTING PROJECT CONSISTS OF THE SUMMIT LOCATION IN ROCKY PASS, ALASKA.
6. THE SURVEY WAS CONDUCTED ON JULY 25, 2013. HYDROGRAPHIC SOUNDING DATA WAS COLLECTED USING AN ODOM ESS MULTI-BEAM ECHOSOUNDER (200KHZ, 120-DEGREE SWATH WIDTH WITH 480, 0.75 DEGREE BEAMS). POSITIONING AND VESSEL ATTITUDE WERE PROVIDED IN REAL TIME USING A TRIMBLE 461 RTK GPS RECEIVER OPERATING ON KINEMATIC CORRECTIONS BROADCAST FROM A TRIMBLE R6 RTK BASE RECEIVER SET AT CONTROL STATION "SUMMIT-3". SOUND VELOCITY PROFILE WAS PROVIDED USING AN ODOM DIGI-BAR PRO, AND WAS PROVIDED IN REAL TIME AT THE SOUNDER HEAD USING AN ODOM DIGI-BAR V. DATA COLLECTION AND NAVIGATION WERE PERFORMED USING HYPACK HYSWEEP (2013) SOFTWARE. MULTI-BEAM SURVEY DATA WAS POST-PROCESSED USING HYPACK HYSWEEP (2013) SOFTWARE.
7. HEAVY AREAS OF KELP SHOULD BE EXPECTED THROUGHOUT THE SURVEY AREA, PARTICULARLY AT LOWER STAGES OF THE TIDE.
8. ALL NAVIGATION AIDS APPEARED TO BE IN GOOD CONDITION AND IN THEIR SPECIFIED LOCATION.
9. THIS DRAWING INDICATES GENERAL CONDITIONS AT THE TIME OF THE SURVEY.
10. MAP SOUNDINGS ARE BINNED AT 12 FEET AND ARE NEAREST CELL CENTER VALUE. VOLUME SOUNDINGS ARE BINNED AT 3 FEET AND ARE AVERAGE CELL VALUE.

SURVEY CONTROL DATA				
STATION	NORTHING	EASTING	MLLW	DESCRIPTION
1349-5 2006	1,770,667.49	2,672,034.91	16.37	3.25 INCH NOS BC
ABLE 1958	1,772,781.08	2,672,206.09		NOT SURVEYED - SEARCHED FOR - LOST (REMOVE)
BAKER 1958	1,770,387.60	2,672,875.82	17.75	STEEL ROD
CHARLIE 1958	1,770,237.18	2,672,408.92	17.02	BRIDGE SPIKE IN BEDROCK
DOG 1958	1,768,794.28	2,672,899.38	17.01	5/8 INCH CONC. FILLED GALV. PIPE WITH TACK
EASY 1958	1,768,221.13	2,672,442.11		DESTROYED
FAST 1927	1,769,882.42	2,672,950.21		NOT SURVEYED - SEARCHED FOR - LOST (REMOVE)
FOX 1958	1,767,196.06	2,672,511.32		NOT SURVEYED - OBLITERATED (UNDER NAV AID FOUNDATION)
GEORGE 1958	1,766,531.37	2,671,774.80	18.40	BRIDGE SPIKE IN BEDROCK
MOST 1927	1,767,184.21	2,672,497.52	10.97	3.25 INCH USCGS SBC HYDROGRAPHIC STATION
R-6 1977	1,770,967.42	2,673,044.51	19.11	3.25 INCH DBC
R-7 1977	1,770,129.56	2,672,241.98	11.54	3.25 INCH DBC
R-8 1977	1,770,245.29	2,672,872.62	19.62	3.25 INCH DBC
R-9 1977	1,768,795.03	2,672,903.85	17.68	3.25 INCH DBC
RKY-2 1907	1,766,666.54	2,671,823.30	19.10	USACE SBC
RKY-3 1973	1,767,012.35	2,672,541.29		NOT SURVEYED - SEARCHED FOR - LOST (REMOVE)
RKY-4 1973	1,767,470.01	2,672,575.32		NOT SURVEYED - SEARCHED FOR - LOST (REMOVE)
SUMMIT-1 2001	1,769,152.43	2,672,939.01	17.83	3.25 INCH DBC
SUMMIT-2 2001	1,772,192.79	2,671,484.38	16.73	2.35 INCH DBC
SUMMIT-3 2007	1,770,295.49	2,672,487.76	18.15	3.25 INCH DBC
YOU 1927	1,764,322.55	2,673,005.64	16.54	3.25 INCH USCGS SBC HYDROGRAPHIC STATION

VOLUME COMPUTATIONS	
PROJECT DEPTH - (-5.0')	CY
AVAILABLE TO PROJECT DEPTH (-5.0')	317
AVAILABLE BETWEEN PROJECT DEPTH (-5.0') AND MAX PLY DEPTH (-6.0')	1,965
AVAILABLE WITHIN SIDE SLOPES (3:1)	332
TOTAL MATERIAL AVAILABLE	2,614

US Army Corps of Engineers
ALASKA DISTRICT

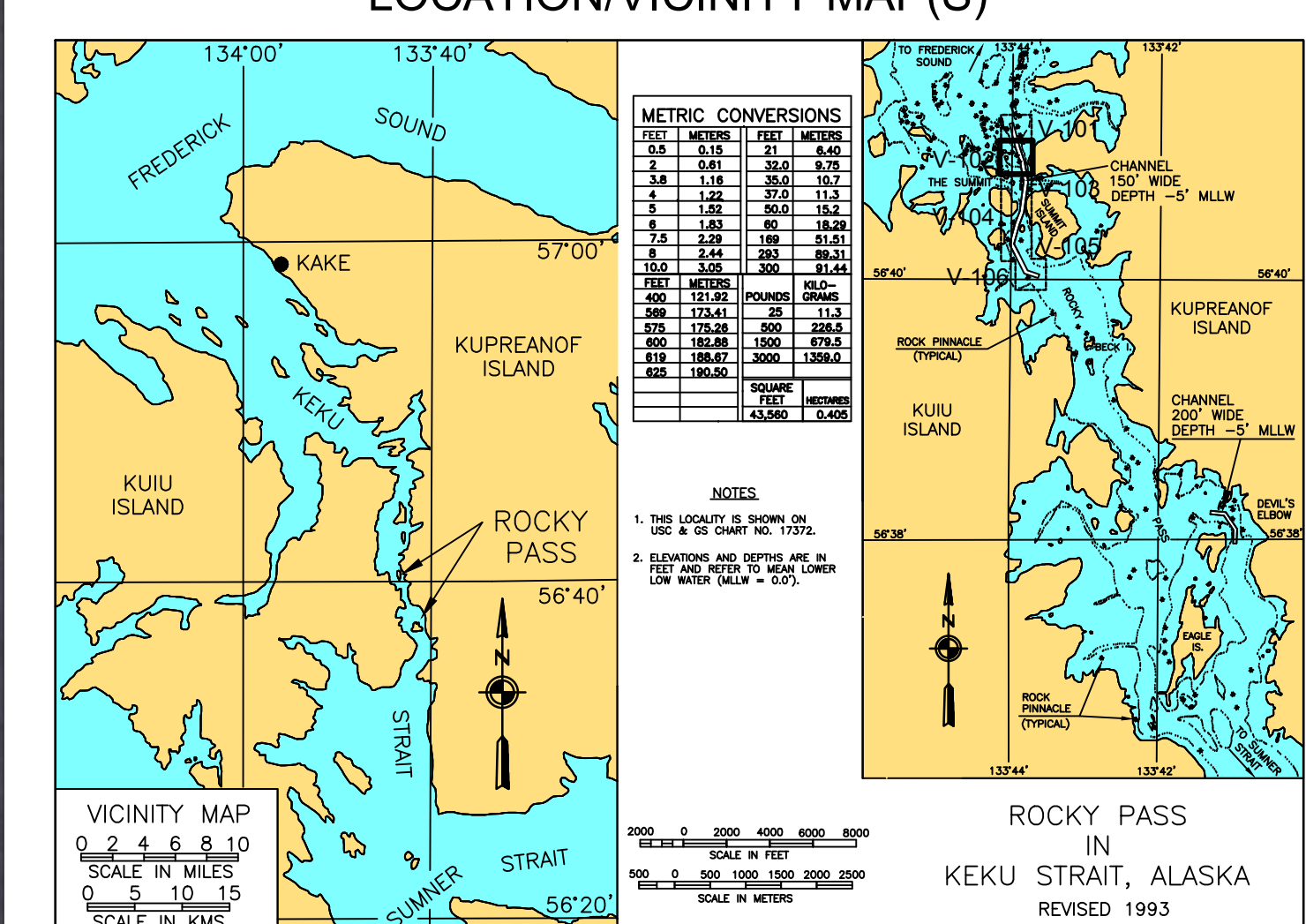
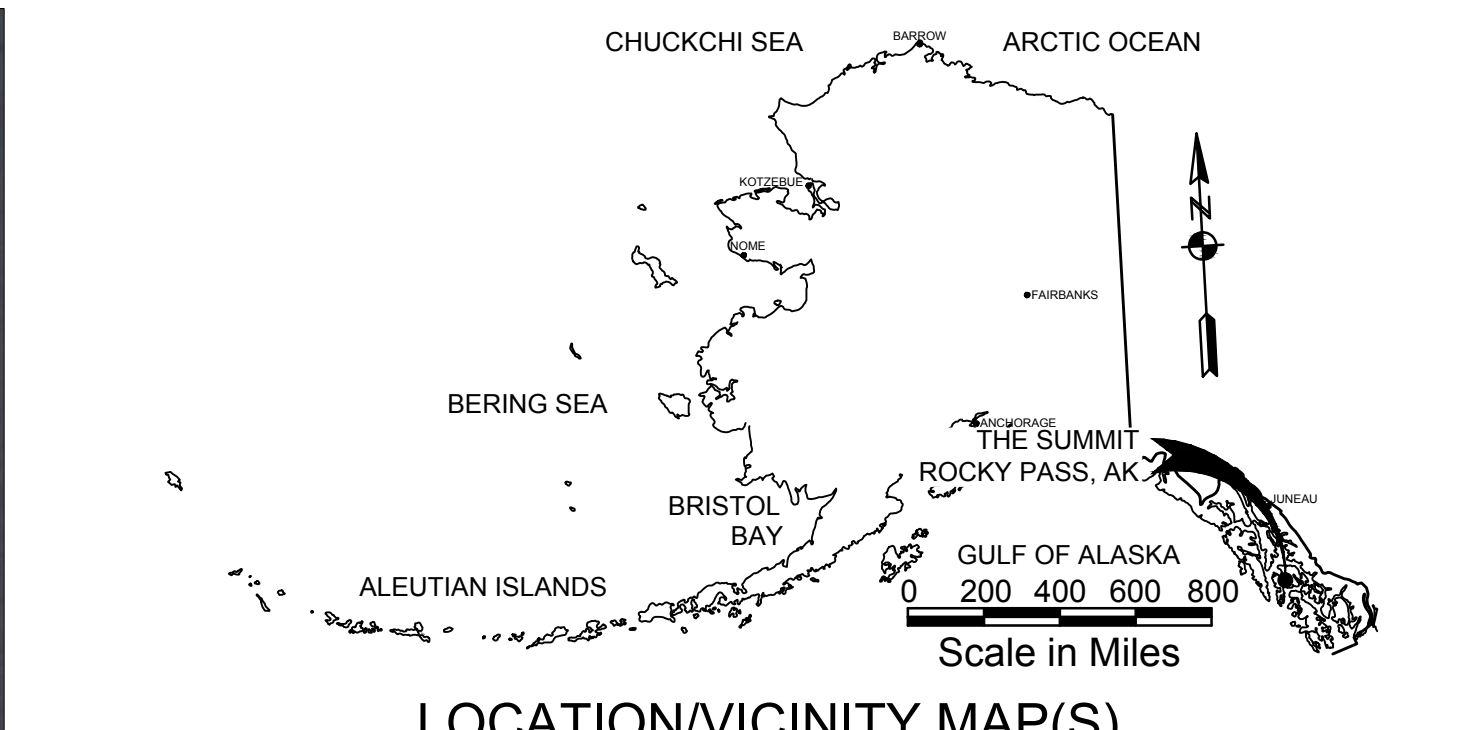
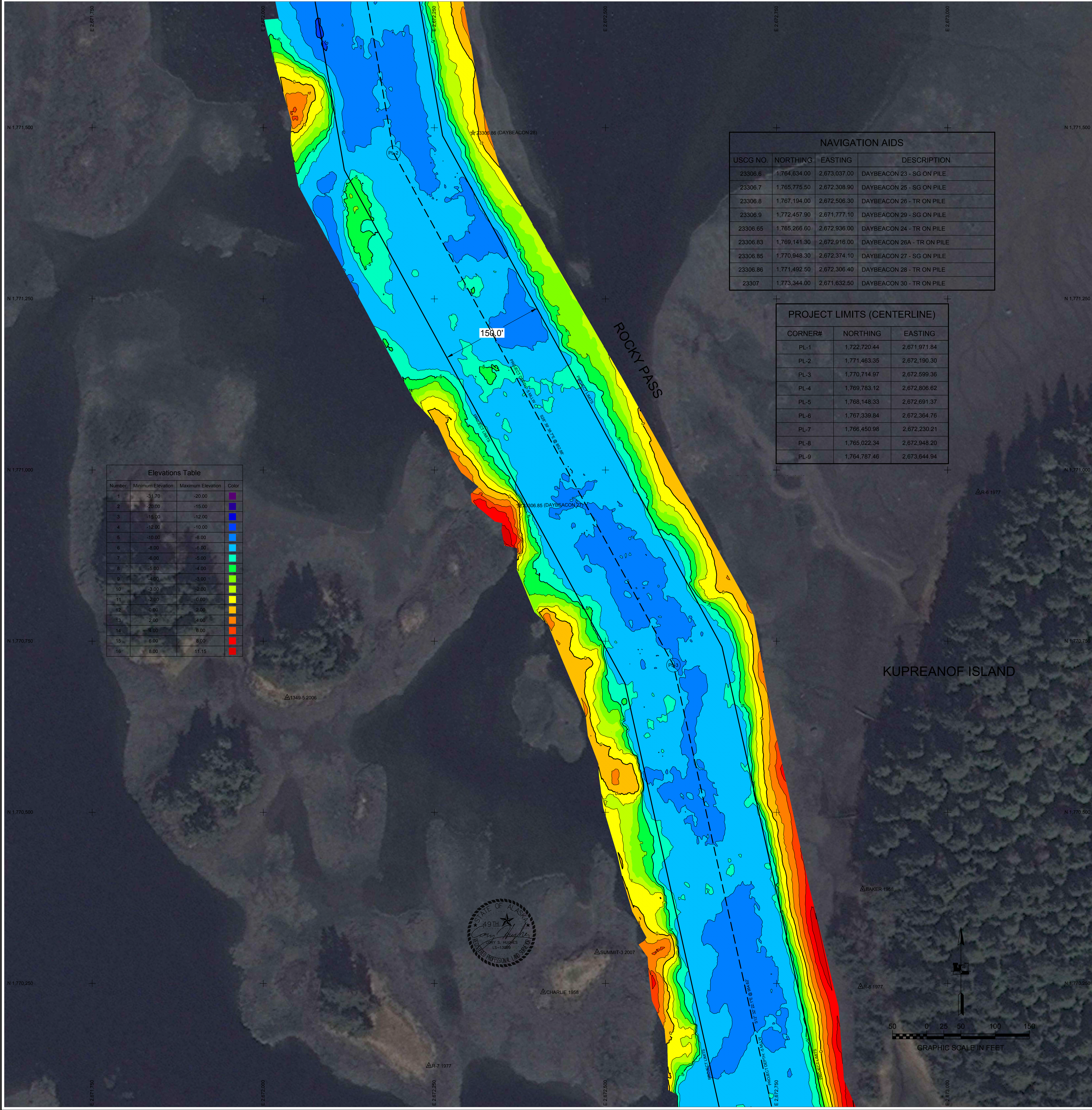
CONTRACT NO. W19B6-AUG-2013
CONTRACTOR: HUGHES & ASSOCIATES
STATE: ALASKA
CITY: WASILLA
PROJECT: ROCKY PASS IN KEKU STRAIT, ALASKA
SHEET: 6 OF 12

DATE	BY	DESCRIPTION
2013.07.25	JP	PROJECT CONDITION SURVEY

ROCKY PASS IN KEKU STRAIT, ALASKA
THE SUMMIT
PROJECT CONDITION SURVEY
JULY 22 - 27, 2013

SHEET IDENTIFICATION
V-106

Sheet 6 of 12



STATION	NORTHING	EASTING	MLLW	DESCRIPTION
1349-5 2006	1,770,667.49	2,672,034.91	16.37	3.25 INCH NOS BC
ABLE 1958	1,772,781.08	2,672,206.09		NOT SURVEYED - SEARCHED FOR - LOST (REMOVE)
BAKER 1958	1,770,387.60	2,672,875.82	17.75	STEEL ROD
CHARLIE 1958	1,770,237.18	2,672,408.92	17.02	BRIDGE SPIKE IN BEDROCK
DOG 1958	1,768,794.28	2,672,899.38	17.01	5/8 INCH CONC. FILLED GALV. PIPE WITH TACK
EASY 1958	1,768,221.13	2,672,442.11		DESTROYED
FAST 1927	1,769,882.42	2,672,950.21		NOT SURVEYED - SEARCHED FOR - LOST (REMOVE)
FOX 1958	1,767,196.06	2,672,511.32		NOT SURVEYED - OBLITERATED (UNDER NAV AID FOUNDATION)
GEORGE 1958	1,766,531.37	2,671,774.80	18.40	BRIDGE SPIKE IN BEDROCK
MOST 1927	1,767,184.21	2,672,497.52	10.97	3.25 INCH USCGS SBC HYDROGRAPHIC STATION
R-6 1977	1,770,967.42	2,673,044.51	19.11	3.25 INCH DBC
R-7 1977	1,770,129.56	2,672,241.98	11.54	3.25 INCH DBC
R-8 1977	1,770,245.29	2,672,872.62	19.62	3.25 INCH DBC
R-9 1977	1,768,795.03	2,672,903.85	17.68	3.25 INCH DBC
RKY-2 1973 2007	1,766,666.54	2,671,823.30	19.10	USACE SBC
RKY-3 1973	1,767,012.35	2,672,541.29		NOT SURVEYED - SEARCHED FOR - LOST (REMOVE)
RKY-4 1973	1,767,470.01	2,672,575.32		NOT SURVEYED - SEARCHED FOR - LOST (REMOVE)
SUMMIT-1 2001	1,769,152.43	2,672,939.01	17.83	3.25 INCH DBC
SUMMIT-2 2001	1,772,192.79	2,671,484.38	16.73	2.35 INCH DBC
SUMMIT-3 2007	1,770,295.49	2,672,487.76	18.15	3.25 INCH DBC
YOU 1927	1,764,322.55	2,673,005.64	16.54	3.25 INCH USCGS SBC HYDROGRAPHIC STATION

SURVEY CONTROL DATA	
STATION	DESCRIPTION
1349-5 2006	3.25 INCH NOS BC
ABLE 1958	NOT SURVEYED - SEARCHED FOR - LOST (REMOVE)
BAKER 1958	STEEL ROD
CHARLIE 1958	BRIDGE SPIKE IN BEDROCK
DOG 1958	5/8 INCH CONC. FILLED GALV. PIPE WITH TACK
EASY 1958	DESTROYED
FAST 1927	NOT SURVEYED - SEARCHED FOR - LOST (REMOVE)
FOX 1958	NOT SURVEYED - OBLITERATED (UNDER NAV AID FOUNDATION)
GEORGE 1958	BRIDGE SPIKE IN BEDROCK
MOST 1927	3.25 INCH USCGS SBC HYDROGRAPHIC STATION
R-6 1977	3.25 INCH DBC
R-7 1977	3.25 INCH DBC
R-8 1977	3.25 INCH DBC
R-9 1977	3.25 INCH DBC
RKY-2 1973 2007	USACE SBC
RKY-3 1973	NOT SURVEYED - SEARCHED FOR - LOST (REMOVE)
RKY-4 1973	NOT SURVEYED - SEARCHED FOR - LOST (REMOVE)
SUMMIT-1 2001	3.25 INCH DBC
SUMMIT-2 2001	2.35 INCH DBC
SUMMIT-3 2007	3.25 INCH DBC
YOU 1927	3.25 INCH USCGS SBC HYDROGRAPHIC STATION

VOLUME COMPUTATIONS	
PROJECT DEPTH - 5.0'	CY
AVAILABLE TO PROJECT DEPTH (-5.0')	317
AVAILABLE BETWEEN PROJECT DEPTH (-5.0') AND MAX PAY DEPTH (-6.0')	1,965
AVAILABLE WITHIN SIDE SLOPES (3:1)	332
TOTAL MATERIAL AVAILABLE	2,614

US Army Corps of Engineers
ALASKA DISTRICT

CONTRACT NO. W1912B-AUG-2013
CONTRACTOR: HUGHES & ASSOCIATES
CITY: WASILLA
STATE: ALASKA
PROJECT NO. 1349-5 2006
SHEET NO. 8 OF 12

ROCKY PASS IN KEKU STRAIT, ALASKA
THE SUMMIT
PROJECT CONDITION SURVEY
JULY 22 - 27, 2013

SHEET IDENTIFICATION
V-108
Sheet 8 of 12

