

NOTES

1. HORIZONTAL CONTROL IN ALASKA STATE PLANE, ZONE 4, NAD83(CORS) IN U.S. SURVEY FEET BASED ON A FULLY CONSTRAINED STATIC GPS NETWORK HOLDING THE EPOCH 2003 (CURRENT) VALUES OF NGS CORS STATIONS: "ANCHORAGE AK UT DCOPS CORP" (TBN - PID 4K0405) AS LAT 61114.4740000"N LONG 14953.4770614"W, "NORTH ESKIMOS ARS ARSEA" - PID 4H0362) AS LAT 61111.14.37488"N LONG 14953.51.81986"W AND "U ALASKA COOP CORP ARS" (JAGG - PID DF7929) AS LAT 61111.27.85611"N LONG 14949.926.64633"W.
2. VERTICAL CONTROL IN U.S. SURVEY FEET AND REFERS TO MEAN-LOWER-LOW-WATER DATUM (MLW=0.0'). THE MLLW VALUES SHOWN ON THIS PLAT ARE BASED ON NOAA/NGS TIDE STATION, 9455090 SEWARD, RESURRECTION BAY, ALASKA. HOLDING USCGS BENCH MARK SHO "NO 19 1966" AS 24.36 FEET. THIS VALUE IS FROM TIDAL EPOCH 1983-2001, PUBLISHED 4/21/2003 FOR THIS STATION.
3. VERTICAL CONTROL WAS ALSO TIED TO THE NORTH AMERICAN VERTICAL DATUM OF 1988 (NAVD88) HOLDING THE NGS PUBLISHED VALUE OF USCGS BENCH MARK SHO "945 5090 TIDAL 10" (PID 120002) AS 49.49 FEET. THE PUBLISHED VALUE OF THIS MONUMENT WAS RETRIEVED FROM THE NGS WEBSITE ON MAY 7, 2009.
4. THE HORIZONTAL CONTROL SURVEY WAS CONDUCTED MAY 16 THROUGH 21, 2009 USING THREE (3) TRIMBLE RB GPS RECEIVERS AND A COMBINATION OF STATIC GPS AND CONVENTIONAL SURVEY TECHNIQUES. GPS DATA PROCESSING WAS ACCOMPLISHED USING TRIMBLE GEOMATICS OFFICE V1.6.
5. THE TOPOGRAPHIC AND PLANIMETRIC SURVEYS WERE CONDUCTED MAY 16 THROUGH 21, 2009 USING TRIMBLE RB GPS RECEIVERS AND REAL-TIME-KINEMATIC PROCEDURES. FIXED AIDS-TO-NAVIGATION WERE TIED AT THE LIGHT GLOBE.
6. HYDROGRAPHIC DATA ACQUISITION WAS CONDUCTED MAY 16 THROUGH 17 AND JUNE 10 THROUGH 11, 2009 USING A TRIMBLE SC911 MULTIBeam ECHOSOUNDER (240KHZ WITH 101 BEAMS WITH 1.5 DEGREES EACH). VESSEL POSITIONING, HEADING AND ATTITUDE WERE MEASURED USING A APPLANIX RP5 M/V/ INERTIAL MOTION UNIT OPERATING WITH RTK CORRECTIONS FROM THE BASE STATION SET AT LONG 14953.51.81986" SOUNDING 2008". SOUNDING WAS MEASURED AND COLLECTED USING AN ODOM DIGIMETER PRO SOUND VELOCITY PROFILER. VESSEL NAVIGATION AND DATA COLLECTION WAS PERFORMED USING HYPACK HYSWEEP INTEGRATED SOFTWARE (v2009). TIDE STATIONS WERE USED TO DETERMINE THE TIME OF TIDE FOR GPS RECEIVER OPERATING ON KINEMATIC CORRECTORS BROADCAST FROM A TRIMBLE RB GPS BASE RECEIVER SET AT USGS SHO "SH-12 2006". DATA PROCESSING AND FINAL DATA ANALYSIS WERE PERFORMED USING CARIS HIPS SOFTWARE (V6.1).
7. SOUNDINGS ARE SHOWN IN U.S. SURVEY FEET AND ARE MINUS UNLESS NOTED OTHERWISE.
8. THIS SURVEY IS INDICATIVE OF CONDITIONS ON THE DATES OF SURVEY.

CONTROL DATA					
STATION	NORTHING	EASTING	MLLW ELEV.	NAD83 ELEV.	DESCRIPTION
LP-8 1965	2,234,892.45	1,743,831.61	16.45	--	DESTROYED
LP-9 1965	2,234,534.04	1,743,621.86	19.12	--	DESTROYED
SH-1	2,236,330.31	1,743,164.45	17.99	--	DESTROYED
SH-2	2,235,952.76	1,742,771.00	18.43	--	DESTROYED
SH-3	2,235,145.33	1,742,766.88	18.58	18.78	PK NAIL IN PIER
SH-5 1995	2,236,206.76	1,743,161.53	17.84	--	DESTROYED
SH-6 1995	2,236,107.00	1,742,714.21	16.54	--	DESTROYED
SH-8 1999	2,234,559.23	1,742,936.09	17.25	17.45	3 1/4" DBC IN CONC.
SH-9 1999	2,236,052.97	1,743,818.33	16.45	--	DESTROYED
SH-10 2002	2,234,669.22	1,742,593.91	17.15	17.35	3 1/4" DBC IN ASPH.
SH-11 2002	2,236,322.74	1,742,912.85	16.91	--	DESTROYED
SH-12 2006	2,234,535.51	1,743,161.53	20.25	20.85	7/8" DBC IN ROCK
SH-13 2006	2,236,056.77	1,744,199.94	20.28	20.78	3 1/4" DBC IN ROCK
SH-14 2009	2,236,080.45	1,743,820.69	16.27	16.47	SET 3 1/4" DBC IN ROCK
SH-15 2009	2,236,350.26	1,742,761.11	19.92	20.12	SET 3 1/4" DBC IN CONC.
SH-16 (UNMARKED)	2,236,057.07	1,744,198.55	20.52	20.72	FND 2 1/2" BC IN ROCK
SH-17 (UNMARKED)	2,235,088.26	1,744,277.61	20.51	20.71	FND 2 1/2" BC IN ROCK
SH-18 (UNMARKED)	2,234,559.23	1,742,936.09	20.51	20.71	FND 2 1/2" BC IN CONC.
SH-19 (UNMARKED)	2,234,899.90	1,743,830.72	20.51	20.71	FND 2 1/2" BC IN ROCK
SH-20 (UNMARKED)	2,234,552.71	1,743,630.82	20.41	20.61	FND 2 1/2" BC IN ROCK

PROJECT LIMITS						
CORNER	NORTHING	EASTING	CORNER	NORTHING	EASTING	
1	2,234,389.4	1,744,126.1	13	2,235,679.2	1,742,797.9	
2	2,234,483.5	1,743,751.5	14	2,234,483.5	1,743,808.0	
3	2,234,588.8	1,743,894.6	15	2,234,647.4	1,743,582.0	
4	2,235,095.1	1,744,186.9	16	2,234,943.4	1,743,753.0	
5	2,235,315.4	1,743,838.0	17	2,234,853.4	1,743,908.8	
6	2,235,522.8	1,743,720.0	18	2,234,342.6	1,743,613.9	
7	2,235,988.4	1,743,716.8	19	2,235,926.2	1,743,530.5	
8	2,235,988.3	1,743,728.2	20	2,235,611.0	1,743,532.6	
9	2,236,428.2	1,743,722.8	21	2,234,943.7	1,743,908.8	
10	2,236,424.3	1,743,325.2	22	2,236,258.3	1,742,792.3	
11	2,236,086.0	1,743,325.2	23	2,236,957.7	1,742,951.7	
12	2,235,684.4	1,743,332.8	24	2,235,985.7	1,744,112.2	

NAVIGATION AIDS			
DESCRIPTION	USCG No.	NORTHING	EASTING
SEWARD BOAT HARBOR LIGHT 1	26015	2,233,886.2	1,743,706.8
SEWARD EAST BREAKWATER LIGHT 2	26020	2,234,552.0	1,743,971.1
SEWARD WEST BREAKWATER LIGHT 3	26025	2,234,541.9	1,743,624.1

CONTRACT NO. W911KB-08-D-0002-0008

CONTRACTOR TERRASOND LIMITED
CITY PALMER STATE ALASKA

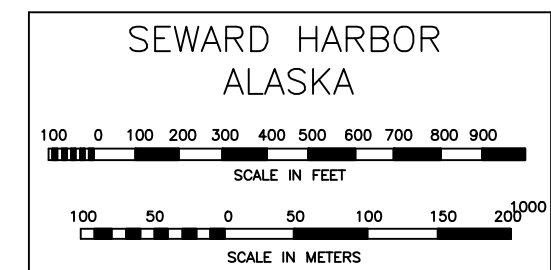
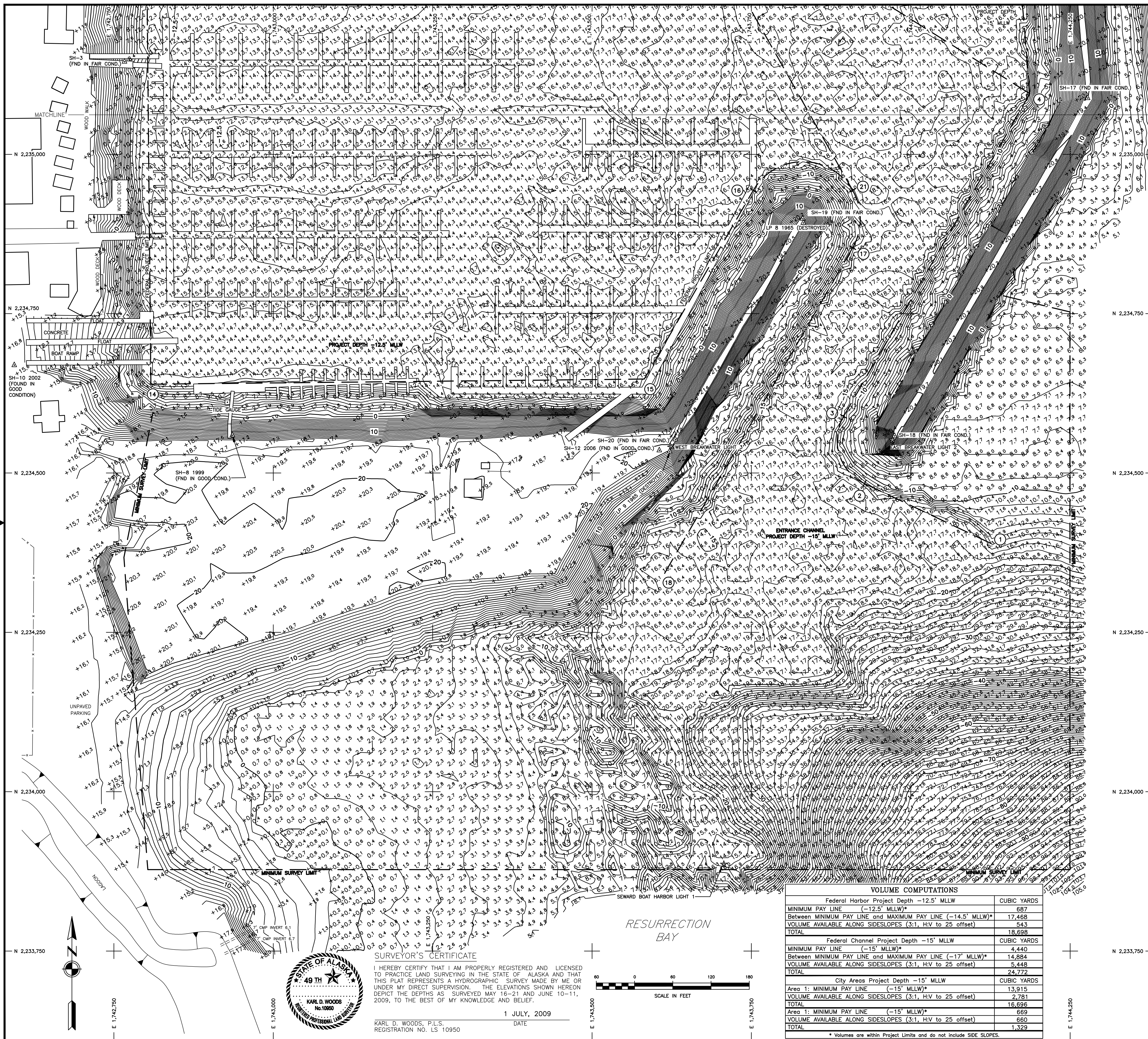
ALASKA DISTRICT
CORPS OF ENGINEERS
ANCHORAGE, ALASKA

SEWARD, ALASKA
SEWARD HARBOR
PROJECT CONDITION SURVEY
MAY 16-21 and JUNE 10-11, 2009

RECOMMENDED:	APPROVED:	DATE:
--------------	-----------	-------

PROJECT MANAGER	CHIEF OPERATIONS-READINESS BRANCH
SURVEY NO.	SCALE: 1" = 60'

2604-09



NOTES

- HORIZONTAL CONTROL IS ALASKA STATE PLANE, ZONE 4, NAD83(CORS) IN U.S. SURVEY FEET BASED ON A FULLY CONSTRAINED STATIC GPS NETWORK HOLDING THE EPOCH 2003 (CURRENT) VALUES OF NGS CORS STATIONS: "ANCHORAGE AK DOT CORS ARP" (TSON - PID 04055) AS LAT 61°10'46.9800"N, LONG 149°47'06.4148"W, "ANCHORAGE CORS ARP" (TSEA - PID A0952) AS LAT 61°11'43.7488"N, LONG 149°53'41.8198"W AND "U ALASKA COOP CORS ARP" (UAG - PID 07929) AS LAT 61°11'27.8561"N, LONG 149°49'26.6463"W.
- VERTICAL CONTROL IS IN U.S. SURVEY FEET AND REFERS TO MEAN-LOWER-LOW-WATER DATUM (MLLW=0.0'). THE MLLW VALUES SHOWN ON THIS PLAT ARE BASED ON NOAA NOS TIDE STATION, "945 5090 SEWARD, RESURRECTION BAY, ALASKA" HOLDING USCGS BENCH MARK SBC "NO 19 1965" AS 24.36 FEET. THIS VALUE IS FROM TIDAL EPOCH 1983-2001, PUBLISHED 4/21/2003 FOR THIS STATION.
- VERTICAL CONTROL WAS ALSO TIED INTO THE NORTH AMERICAN VERTICAL DATUM OF 1988 (NAVD88) HOLDING THE NGS PUBLISHED VALUE OF USCGS BENCH MARK SBC "945 5090 TIDAL 10" (PID IT0402) AS 49.35 FEET. THE PUBLISHED VALUE OF THIS MONUMENT WAS RETRIEVED FROM THE NGS WEBSITE ON MAY 7, 2009.
- THE HORIZONTAL CONTROL SURVEY WAS CONDUCTED MAY 16 THROUGH 21, 2009 USING THREE (3) TRIMBLE R8 GPS RECEIVERS AND A COMBINATION OF STATIC GPS AND CONVENTIONAL SURVEY TECHNIQUES. GPS DATA PROCESSING WAS ACCOMPLISHED USING TRIMBLE GEOMATICS OFFICE V1.6.
- THE TOPOGRAPHIC AND PLANIMETRIC SURVEYS WERE CONDUCTED MAY 16 THROUGH 21, 2009 USING TRIMBLE R8 GPS RECEIVERS AND REAL-TIME KINEMATIC PROCEDURES. FIXED AIDS-TO-NAVIGATION WERE TIED AT THE LIGHT GLOBE.
- HYDROGRAPHIC DATA ACQUISITION WAS CONDUCTED MAY 16 THROUGH 17 AND JUNE 10 THROUGH 11, 2009 USING A RESON SEABAT 8101 MULTIBEAM ECHOSOUNDER (240KHZ WITH 101 BEAMS AT 1.5 DEGREES EACH). VESSEL POSITIONING, HEADING AND ATTITUDE WERE MEASURED USING A APPLIX POS-WAY INERTIAL MOTION UNIT OPERATING WITH RTK CORRECTORS FROM THE BASE STATION SET AT USCGS SBC "SH-12 2006". SOUND VELOCITY WAS MEASURED AND COLLECTED USING AN ODOM DIGIBAR PRO SOUND VELOCITY PROFILER. VESSEL NAVIGATION AND DATA COLLECTION WAS PERFORMED USING HYPERACK HYPERVIEW INTEGRATED SOFTWARE (V2009). TIDE CORRECTIONS WERE PROVIDED IN REAL-TIME USING A TRIMBLE R8 GPS RECEIVER OPERATING ON KINEMATIC CORRECTORS BROADCAST FROM A TRIMBLE R8 GPS BASE RECEIVER SET AT USCGS SBC "SH-12 2006". DATA PROCESSING AND FINAL DATA ANALYSIS WERE PERFORMED USING CARIS HIPS SOFTWARE (V6.1).
- SOUNDINGS ARE SHOWN IN U.S. SURVEY FEET AND ARE MINUS UNLESS NOTED OTHERWISE.
- THIS SURVEY IS INDICATIVE OF CONDITIONS ON THE DATES OF SURVEY.

CONTROL DATA

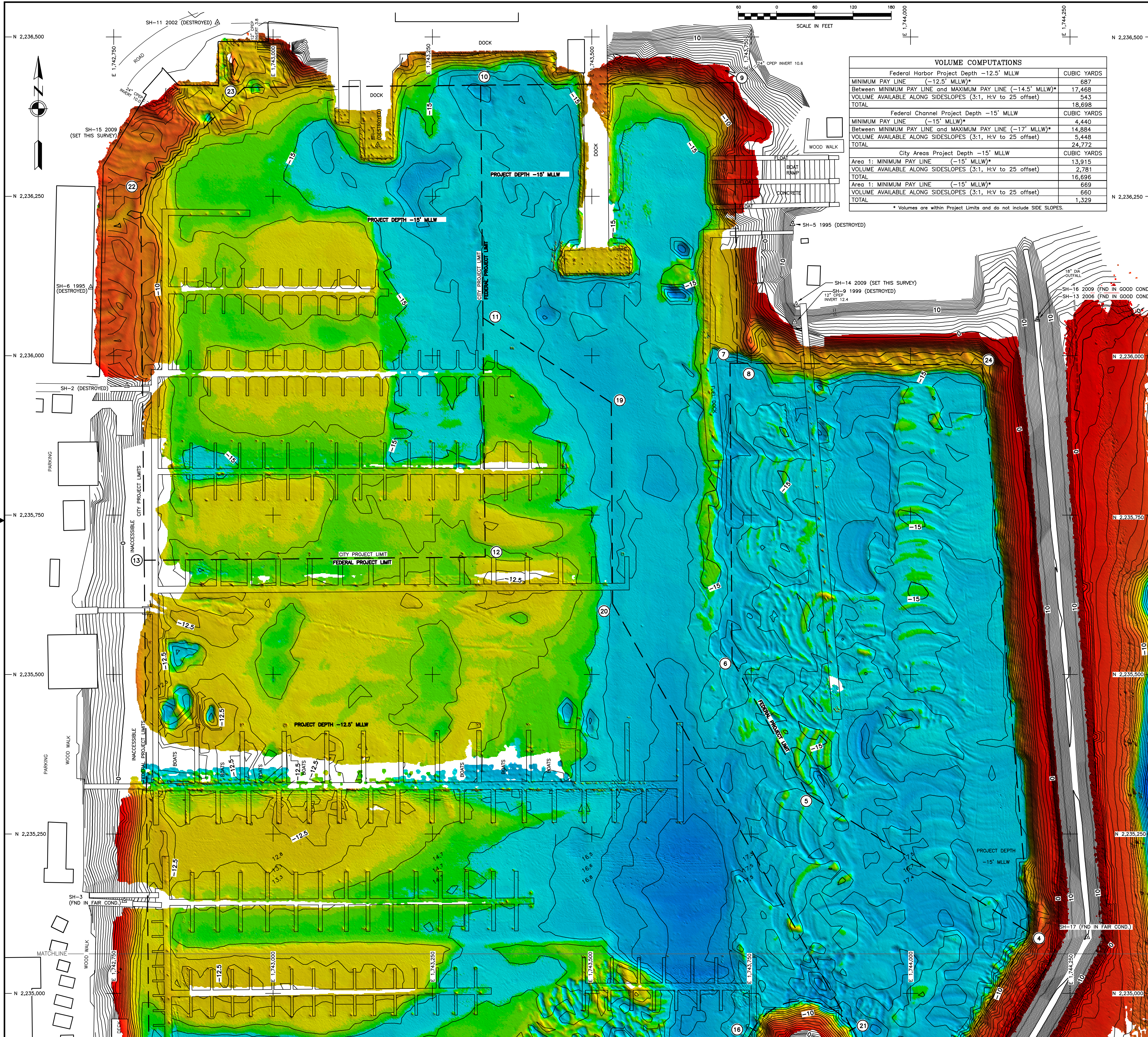
STATION	NORTHING	EASTING	MLLW ELEV.	NAVDB8 ELEV.	DESCRIPTION
LP-8 1965	2,234,892.45	1,743,831.61	16.45	---	DESTROYED
LP-9 1965	2,234,534.04	1,743,621.86	19.12	---	DESTROYED
SH-1	2,236,330.31	1,743,164.45	17.99	---	DESTROYED
SH-2	2,235,952.79	1,742,771.09	18.43	---	DESTROYED
SH-3	2,235,145.33	1,742,765.85	19.58	18.78	PK NAIL IN PIER
SH-5 1995	2,236,208.78	1,743,814.93	17.04	---	DESTROYED
SH-6 1995	2,236,107.00	1,742,714.21	16.54	---	DESTROYED
SH-8 1999	2,234,559.23	1,742,936.09	17.25	17.45	3 1/4" DBC IN CONC.
SH-9 1999	2,236,052.97	1,743,818.33	16.44	---	DESTROYED
SH-10 2002	2,234,665.24	1,742,593.91	17.15	17.35	3 1/4" DBC IN ASPH.
SH-11 2002	2,236,529.74	1,742,912.85	18.91	---	DESTROYED
SH-12 2006	2,234,535.51	1,743,605.71	20.65	20.85	3 1/4" DBC IN ROCK
SH-13 2006	2,236,056.67	1,744,199.94	20.58	20.78	3 1/4" DBC IN ROCK
SH-14 2009	2,236,080.45	1,743,820.69	16.27	16.47	SET 3 1/4" DBC IN ROCK
SH-15 2009	2,236,350.26	1,742,781.11	19.82	20.12	SET 3 1/4" DBC IN CONC.
SH-16 (UNMARKED)	2,236,057.07	1,744,198.55	20.52	20.72	FND 2 1/2" BC IN ROCK
SH-17 (UNMARKED)	2,235,088.26	1,744,277.61	19.51	19.71	FND 2 1/2" BC IN ROCK
SH-18 (UNMARKED)	2,234,558.18	1,743,974.82	20.69	20.89	FND 2 1/2" BC IN CONC.
SH-19 (UNMARKED)	2,234,898.90	1,743,830.72	20.51	20.71	FND 2 1/2" BC IN ROCK
SH-20 (UNMARKED)	2,234,552.71	1,743,630.82	20.41	20.61	FND 2 1/2" BC IN ROCK

PROJECT LIMITS

CORNER	NORTHING	EASTING	CORNER	NORTHING	EASTING
1	2,234,389.4	1,744,126.1	13	2,235,679.2	1,742,797.9
2	2,234,483.5	1,743,927.5	14	2,234,639.3	1,742,808.0
3	2,234,588.8	1,743,894.6	15	2,234,647.4	1,743,582.0
4	2,235,095.1	1,744,186.9	16	2,234,943.4	1,743,753.0
5	2,235,313.4	1,743,838.0	17	2,234,853.4	1,743,908.8
6	2,235,522.8	1,743,720.0	18	2,234,342.6	1,743,613.9
7	2,235,988.4	1,743,716.8	19	2,235,926.3	1,743,530.5
8	2,235,988.3	1,743,728.2	20	2,235,611.0	1,743,532.6
9	2,236,428.2	1,743,722.8	21	2,234,943.7	1,743,908.8
10	2,236,424.3	1,743,325.6	22	2,236,258.3	1,742,792.3
11	2,236,059.4	1,743,329.2	23	2,236,420.7	1,742,955.0
12	2,235,684.4	1,743,332.8	24	2,235,985.7	1,744,112.2

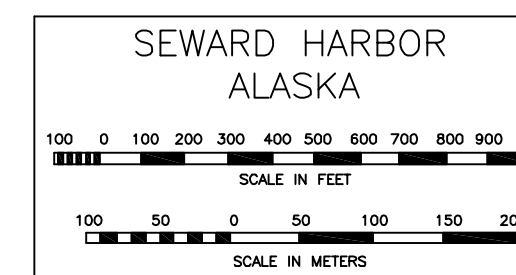
NAVIGATION AIDS			
DESCRIPTION	USCG No.	NORTHING	EASTING
SEWARD BOAT HARBOR LIGHT 1	26015	2,233,886.2	1,743,706.8
SEWARD EAST BREAKWATER LIGHT 2	26020	2,234,552.0	1,743,971.1
SEWARD WEST BREAKWATER LIGHT 3	26025	2,234,541.9	1,743,624.1

CONTRACT NO. W911KB-08-D-0002-0008		
CONTRACTOR TERRASOND LIMITED		
CITY PALMER STATE ALASKA		
ALASKA DISTRICT CORPS OF ENGINEERS ANCHORAGE, ALASKA		
SEWARD, ALASKA SEWARD HARBOR PROJECT CONDITION SURVEY MAY 16-21 and JUNE 10-11, 2009		
SURVEYED: JCM/ZRM/WJB/MRE DRAWN: LEP CHECKED: MRE/KDW SUBMITTED:	RECOMMENDED: APPROVED: DATE:	DATE:
SURVEY NO. 2604-09		SCALE: 1" = 60'
SHEET 2 OF 2		



VOLUME COMPUTATIONS	
Federal Harbor Project Depth -12.5' MLLW	CUBIC YARDS
MINIMUM PAY LINE (-12.5' MLLW)*	687
Between MINIMUM PAY LINE and MAXIMUM PAY LINE (-14.5' MLLW)*	17,468
VOLUME AVAILABLE ALONG SIDESLOPES (3:1, HV to 25 offset)	543
TOTAL	18,698
Federal Channel Project Depth -15' MLLW	CUBIC YARDS
MINIMUM PAY LINE (-15' MLLW)*	4,440
Between MINIMUM PAY LINE and MAXIMUM PAY LINE (-17' MLLW)*	14,854
VOLUME AVAILABLE ALONG SIDESLOPES (3:1, HV to 25 offset)	5,448
TOTAL	24,772
City Areas Project Depth -15' MLLW	CUBIC YARDS
Area 1: MINIMUM PAY LINE (-15' MLLW)*	13,915
VOLUME AVAILABLE ALONG SIDESLOPES (3:1, HV to 25 offset)	2,781
TOTAL	16,696
Area 2: MINIMUM PAY LINE (-15' MLLW)*	669
VOLUME AVAILABLE ALONG SIDESLOPES (3:1, HV to 25 offset)	660
TOTAL	1,329

* Volumes are within Project Limits and do not include SIDE SLOPES.



NOTES

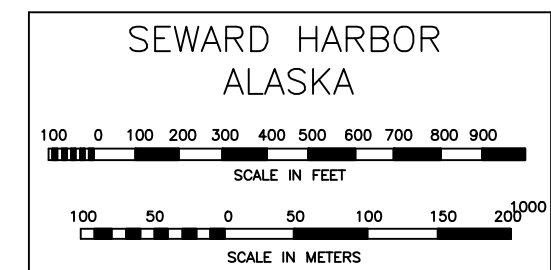
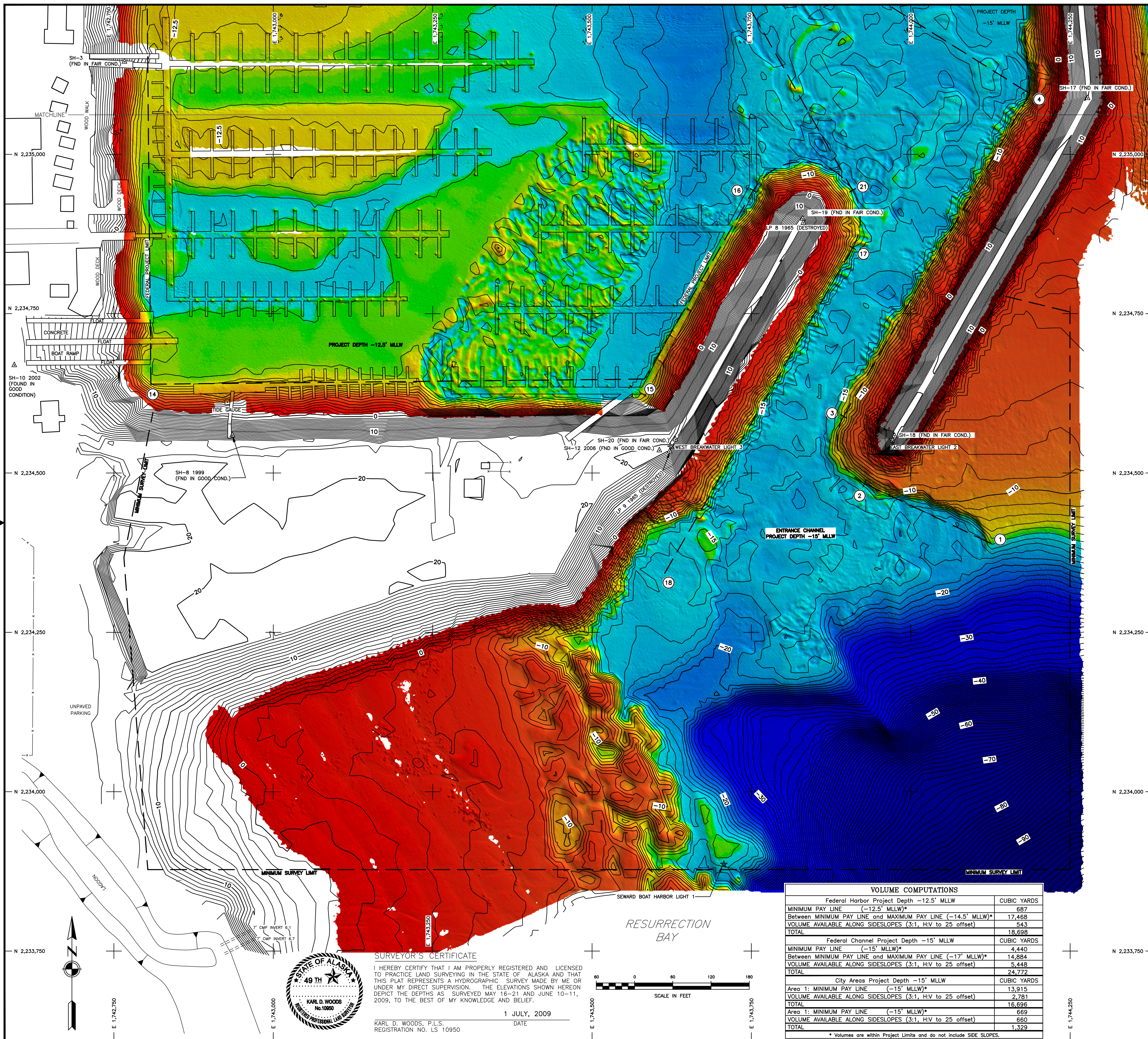
- HORIZONTAL CONTROL IS ALASKA STATE PLANE, ZONE 4, NAD83(CORS) IN U.S. SURVEY FEET BASED ON A FULLY CONSTRAINED STATIC GPS NETWORK HOLDING THE EPOCH 2003 (CURRENT) VALUES OF NGS CORS STATIONS: "ANCHORAGE AK DOT CORS ARP" (TBOA - PID DK4055) AS LAT 61°10'46.9800"N, LONG 149°47'06.41489"W, "ANCHORAGE CORS ARP" (TSEA - PID AIG952) AS LAT 61°11'14.37488"N, LONG 149°35'41.81988"W AND "U ALASKA COOP CORS ARP" (UAG - PID DF7929) AS LAT 61°11'27.85611"N, LONG 149°49'26.64633"W.
- VERTICAL CONTROL IS IN U.S. SURVEY FEET AND REFERS TO MEAN-LOWER-LOW-WATER DATUM (MLLW=0.0'). THE MLLW VALUES SHOWN ON THIS PLAT ARE BASED ON NOAA/NOS TIDE STATION, "945 5090 SEWARD, RESURRECTION BAY, ALASKA" HOLDING USCGS BENCH MARK SBC "NO 19 1966" AS 24.36 FEET. THIS VALUE IS FROM TIDAL EPOCH 1983-2001, PUBLISHED 4/21/2003 FOR THIS STATION.
- VERTICAL CONTROL WAS ALSO TIED INTO THE NORTH AMERICAN VERTICAL DATUM OF 1988 (NAVD88) HOLDING THE NGS PUBLISHED VALUE OF USCGS BENCH MARK SBC "945 5090 TIDAL 10" (PID IT0402) AS 49.35 FEET. THE PUBLISHED VALUE OF THIS MONUMENT WAS RETRIEVED FROM THE NGS WEBSITE ON MAY 7, 2009.
- THE HORIZONTAL CONTROL SURVEY WAS CONDUCTED MAY 16 THROUGH 21, 2009 USING THREE (3) TRIMBLE R8 GPS RECEIVERS AND A COMBINATION OF STATIC GPS AND CONVENTIONAL SURVEY TECHNIQUES. GPS DATA PROCESSING WAS ACCOMPLISHED USING TRIMBLE GEOMATICS OFFICE V1.6.
- THE TOPOGRAPHIC AND PLANIMETRIC SURVEYS WERE CONDUCTED MAY 16 THROUGH 21, 2009 USING TRIMBLE R8 GPS RECEIVERS AND REAL-TIME-KINEMATIC PROCEDURES. FIXED AIDS-TO-NAVIGATION WERE TIED AT THE LIGHT GLOBE.
- HYDROGRAPHIC DATA ACQUISITION WAS CONDUCTED MAY 16 THROUGH 17 AND JUNE 10 THROUGH 11, 2009 USING A RESON SEABAT 8101 MULTIBEAM ECHOSOUNDER (240KHZ WITH 101 BEAMS AT 1.5 DEGREES EACH). VESSEL POSITIONING, HEADING AND ALTITUDE WERE MEASURED USING A APPLIX POS M/V INERTIAL MOTION UNIT OPERATING WITH RTK CORRECTORS FROM THE BASE STATION SET AT USCGS SBC "SH-12 2006". SOUND VELOCITY WAS MEASURED AND COLLECTED USING AN ODOM DIGIBAR PRO SOUND VELOCITY PROFILER. VESSEL NAVIGATION AND DATA COLLECTION WAS PERFORMED USING HYPACK HYSWEEP INTEGRATED SOFTWARE (V2009). TIDE CORRECTIONS WERE PROVIDED IN REAL-TIME USING A TRIMBLE R8 GPS RECEIVER OPERATING ON KINEMATIC CORRECTORS BROADCAST FROM A TRIMBLE R8 GPS BASE RECEIVER SET AT USCGS SBC "SH-12 2006". DATA PROCESSING AND FINAL DATA ANALYSIS WERE PERFORMED USING GARIS HPFS SOFTWARE (V6.1).
- SOUNDINGS ARE SHOWN IN U.S. SURVEY FEET AND ARE MINUS UNLESS NOTED OTHERWISE.
- THIS SURVEY IS INDICATIVE OF CONDITIONS ON THE DATES OF SURVEY.

CONTROL DATA				
STATION	NORTHING	EASTING	MLLW ELEV.	DESCRIPTION
LP-8 1966	2,234,892.45	1,743,631.61	16.45	DESTROYED
LP-9 1965	2,234,534.04	1,743,621.86	19.12	DESTROYED
SH-1	2,236,330.31	1,743,164.45	17.99	DESTROYED
SH-2	2,235,952.75	1,742,771.00	18.43	DESTROYED
SH-3	2,235,145.33	1,742,766.86	18.58	PK NAIL IN PIER
SH-5 1995	2,236,206.70	1,743,814.93	17.04	DESTROYED
SH-6 1995	2,236,107.00	1,742,714.21	16.54	DESTROYED
SH-8 1999	2,234,559.23	1,742,936.09	17.25	3 1/4" DBC IN CONC.
SH-9 1989	2,236,052.97	1,743,818.33	16.44	DESTROYED
SH-10 2002	2,234,669.22	1,742,593.91	17.15	3 1/4" DBC IN ASPH.
SH-11 2002	2,236,522.74	1,742,912.85	18.91	DESTROYED
SH-12 2006	2,234,535.51	1,743,605.71	20.65	20.85 3 1/4" DBC IN ROCK
SH-13 2006	2,236,056.67	1,744,199.94	20.58	20.78 3 1/4" DBC IN ROCK
SH-14 2009	2,236,080.45	1,743,820.69	16.27	16.47 SET 3 1/4" DBC IN ROCK
SH-15 2009	2,236,350.26	1,742,761.11	19.82	20.12 SET 3 1/4" DBC IN CONC.
SH-16 (UNMARKED)	2,236,057.07	1,744,198.55	20.52	20.72 FND 2 1/2" BC IN ROCK
SH-17 (UNMARKED)	2,235,088.26	1,744,277.61	19.51	19.71 FND 2 1/2" BC IN ROCK
SH-18 (UNMARKED)	2,234,558.18	1,743,974.82	20.69	20.89 FND 2 1/2" BC IN CONC.
SH-19 (UNMARKED)	2,234,898.90	1,743,830.72	20.51	20.71 FND 2 1/2" BC IN ROCK
SH-20 (UNMARKED)	2,234,552.71	1,743,630.82	20.41	20.61 FND 2 1/2" BC IN ROCK

PROJECT LIMITS					
CORNER	NORTHING	EASTING	CORNER	NORTHING	EASTING
1	2,234,389.4	1,744,126.1	13	2,235,679.2	1,742,797.9
2	2,234,483.5	1,743,927.5	14	2,234,639.3	1,742,808.0
3	2,234,588.6	1,743,894.6	15	2,234,647.4	1,743,582.0
4	2,235,095.1	1,744,186.9	16	2,234,943.4	1,743,753.0
5	2,235,313.4	1,743,838.0	17	2,234,853.4	1,743,908.8
6	2,235,522.8	1,743,720.0	18	2,234,342.6	1,743,613.9
7	2,235,988.4	1,743,716.8	19	2,235,926.3	1,743,530.5
8	2,235,988.3	1,743,728.2	20	2,235,611.0	1,743,532.6
9	2,236,428.2	1,743,722.8	21	2,234,943.7	1,743,908.8
10	2,236,424.3	1,743,325.6	22	2,236,258.3	1,742,792.3
11	2,236,059.4	1,743,329.2	23	2,236,420.7	1,742,955.0
12	2,235,684.4	1,743,332.8	24	2,235,985.7	1,744,112.2

NAVIGATION AIDS			
DESCRIPTION	USCG No.	NORTHING	EASTING
SEWARD BOAT HARBOR LIGHT 1	26015	2,233,886.2	1,743,706.8
SEWARD EAST BREAKWATER LIGHT 2	26020	2,234,552.0	1,743,971.1
SEWARD WEST BREAKWATER LIGHT 3	26025	2,234,541.9	1,743,624.1

CONTRACT NO. W911KB-08-D-0002-0008			
CONTRACTOR TERRASOND LIMITED		STATE ALASKA	
CITY PALMER			
ALASKA DISTRICT CORPS OF ENGINEERS ANCHORAGE, ALASKA			
SURVEYED: JCM/ZRM/WJB/MRE DRAWN: LEP CHECKED: MRE/KDW SUBMITTED:		SEWARD, ALASKA SEWARD HARBOR PROJECT CONDITION SURVEY MAY 16-21 and JUNE 10-11, 2009	
RECOMMENDED:		APPROVED:	DATE:
PROJECT MANAGER		CHIEF OPERATIONS-RESEARCH BRANCH	
SURVEY NO. 2604-09		SCALE: 1" = 60'	
		SHEET 1 OF 2	



NOTES

- HORIZONTAL CONTROL IS ALASKA STATE PLANE, ZONE 4, NAD83(CORS) IN U.S. SURVEY FEET BASED ON A FULLY CONSTRAINED STATIC GPS NETWORK HOLDING THE EPOCH 2003 (CURRENT) VALUES OF NGS CORRS STATIONS: ANCHORAGE AK DOT CORRS ARP (TBEON - PID 04055) AS LAT 61°10'46.98000"N, LONG 149°47'06.41489"W; ANCHORAGE CORRS ARP (TSEA - PID A0952) AS LAT 61°11'43.74888"N, LONG 149°53'41.81988"W AND U ALASKA COOP CORRS ARP (UAGG - PID D7829) AS LAT 61°11'27.85611"N, LONG 149°49'26.64635"W.
- VERTICAL CONTROL IS IN U.S. SURVEY FEET AND REFERS TO MEAN-LOWER-LOW-WATER DATUM (MLLW=0.0'). THE MLLW VALUES SHOWN ON THIS PLAN ARE BASED ON NOAA/NOS TIDE STATION, 945 5090 SEWARD, RESURRECTION BAY, ALASKA HOLDING USCGS BENCH MARK SBC "NO 19 1966" AS 24.36 FEET. THIS VALUE IS FROM TIDAL EPOCH 1983-2001, PUBLISHED 4/21/2003 FOR THIS STATION.
- VERTICAL CONTROL WAS ALSO TIED INTO THE NORTH AMERICAN VERTICAL DATUM OF 1988 (NAV88) HOLDING THE NGS PUBLISHED VALUE OF USCGS BENCH MARK SBC "945 5090 TIDAL 10" (PID IT0402) AS 49.35 FEET. THE PUBLISHED VALUE OF THIS MONUMENT WAS RETRIEVED FROM THE NGS WEBSITE ON MAY 7, 2009.
- THE HORIZONTAL CONTROL SURVEY WAS CONDUCTED MAY 16 THROUGH 21, 2009 USING THREE (3) TRIMBLE R8 GPS RECEIVERS AND A COMBINATION OF STATIC GPS AND CONVENTIONAL SURVEY TECHNIQUES. GPS DATA PROCESSING WAS ACCOMPLISHED USING TRIMBLE GEOMATICS OFFICE V1.6.
- THE TOPOGRAPHIC AND PLANIMETRIC SURVEYS WERE CONDUCTED MAY 16 THROUGH 21, 2009 USING TRIMBLE R8 GPS RECEIVERS AND REAL-TIME KINEMATIC PROCEDURES. FIXED AIDS-TO-NAVIGATION WERE TIED AT THE LIGHT GLOBE.
- HYDROGRAPHIC DATA ACQUISITION WAS CONDUCTED MAY 16 THROUGH 17 AND JUNE 10 THROUGH 11, 2009 USING A RESON SEABAT 8101 MULTIBEAM ECHOSOUNDER (240KHZ WITH 101 BEAMS AT 1.5 DEGREES EACH). VESSEL POSITIONING, HEADING AND ATTITUDE WERE MEASURED USING A APPLIXIN FDS W/V INERTIAL MOTION UNIT OPERATING WITH RTK CORRECTORS FROM THE BASE STATION SET AT USCGS SBC "SH-12 2006". SOUND VELOCITY WAS MEASURED AND COLLECTED USING AN ODOM DIGIBAR PRO SOUND VELOCITY PROFILER. VESSEL NAVIGATION AND DATA COLLECTION WAS PERFORMED USING HYPERACK HYSWIM INTEGRATED SOFTWARE (V2009). TIDE CORRECTIONS WERE PROVIDED IN REAL-TIME USING A TRIMBLE R8 GPS RECEIVER OPERATING ON KINEMATIC CORRECTORS BROADCAST FROM A TRIMBLE R8 GPS BASE RECEIVER SET AT USCGS SBC "SH-12 2006". DATA PROCESSING AND FINAL DATA ANALYSIS WERE PERFORMED USING CARIS HIPS SOFTWARE (V6.1).
- SOUNDINGS ARE SHOWN IN U.S. SURVEY FEET AND ARE MINUS UNLESS NOTED OTHERWISE.
- THIS SURVEY IS INDICATIVE OF CONDITIONS ON THE DATES OF SURVEY.

CONTROL DATA				
STATION	NORTHING	EASTING	MLLW ELEV.	NAV88 ELEV.
LP-8 1965	2,234,892.45	1,743,831.61	16.45	---
LP-9 1965	2,234,534.04	1,743,621.86	19.12	---
SH-1	2,236,330.31	1,743,164.45	17.99	---
SH-2	2,235,952.79	1,742,771.00	18.43	---
SH-3	2,235,145.33	1,742,766.86	18.58	18.78
SH-5 1995	2,236,208.78	1,743,814.93	17.04	---
SH-6 1995	2,236,107.00	1,742,714.21	16.54	---
SH-8 1999	2,234,559.23	1,742,936.09	17.25	17.45
SH-9 1999	2,236,052.97	1,743,818.33	16.44	---
SH-10 2002	2,234,669.22	1,742,593.91	17.15	17.35
SH-11 2002	2,236,522.74	1,742,912.85	18.91	---
SH-12 2006	2,234,535.51	1,743,605.71	20.65	20.85
SH-13 2006	2,236,056.67	1,744,199.94	20.58	20.78
SH-14 2009	2,236,080.45	1,743,820.69	16.27	16.47
SH-15 2009	2,236,350.26	1,742,781.11	19.82	20.12
SH-16 (UNMARKED)	2,236,057.07	1,744,198.55	20.52	20.72
SH-17 (UNMARKED)	2,235,088.26	1,744,277.61	19.51	19.71
SH-18 (UNMARKED)	2,234,558.18	1,743,974.82	20.69	20.89
SH-19 (UNMARKED)	2,234,898.90	1,743,830.72	20.51	20.71
SH-20 (UNMARKED)	2,234,552.71	1,743,630.82	20.41	20.61

PROJECT LIMITS				
CORNER	NORTHING	EASTING	CORNER	NORTHING
1	2,234,389.4	1,744,126.1	13	2,235,679.2
2	2,234,483.5	1,743,927.5	14	2,234,639.3
3	2,234,588.5	1,743,894.6	15	2,234,647.4
4	2,235,095.1	1,744,186.9	16	2,234,943.4
5	2,235,313.4	1,743,838.0	17	2,234,853.4
6	2,235,522.8	1,743,720.0	18	2,234,342.6
7	2,235,988.4	1,743,716.8	19	2,235,926.3
8	2,235,988.3	1,743,728.2	20	2,235,611.0
9	2,236,428.2	1,743,722.8	21	2,234,943.7
10	2,236,424.3	1,743,325.6	22	2,236,258.3
11	2,236,059.4	1,743,329.2	23	2,236,420.7
12	2,235,684.4	1,743,332.8	24	2,235,985.7

NAVIGATION AIDS			
DESCRIPTION	USCG No.	NORTHING	EASTING
SEWARD BOAT HARBOR LIGHT 1	26015	2,233,886.2	1,743,706.8
SEWARD EAST BREAKWATER LIGHT 2	26020	2,234,552.0	1,743,971.1
SEWARD WEST BREAKWATER LIGHT 3	26025	2,234,541.9	1,743,624.1

CONTRACT NO. W911KB-08-D-0002-0008
CONTRACTOR TERRASOND LIMITED
CITY PALMER STATE ALASKA

ALASKA DISTRICT
CORPS OF ENGINEERS
ANCHORAGE, ALASKA

SURVEYED: JCM/ZRM/WJB/MRE
DRAWN: LEP
CHECKED: MRE/KDW
SUBMITTED: _____

RECOMMENDED: _____ APPROVED: _____ DATE: _____
PROJECT MANAGER: _____ CHIEF OPERATIONS/ENGINEER: _____
SURVEY NO. 2604-09

SCALE: 1" = 60'
SHEET 2 OF 2