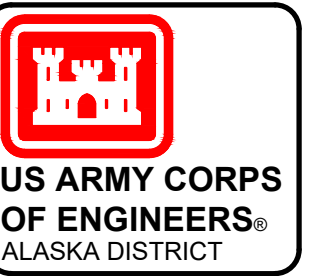
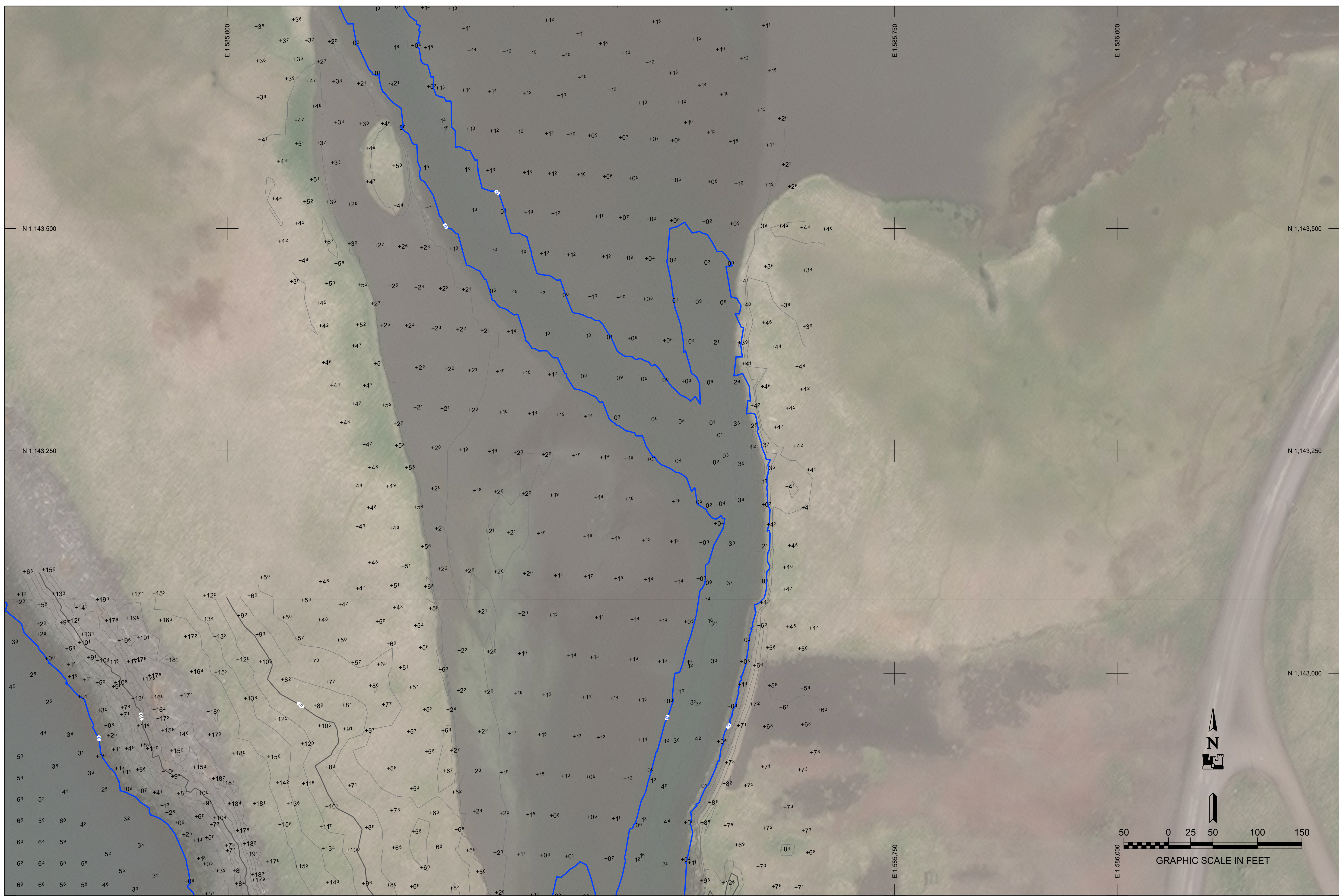


REV.	DATE	BY	APPR.	DESCRIPTION

U.S. ARMY CORPS OF ENGINEERS ALASKA DISTRICT 204 3RD STREET JBER, ALASKA 99506-0888	SURVEYED BY: GREGORY W. GIBSON	U.P.C. 010169	CONTRACT NO.: 1W811K-16-D-0014
	DRAWN BY: ROBERT GOUGHNOUR	PLOT DATE: 08 October 2019	TASK ORDER NO.: 16P0055
CHECKED BY: THASJGGV/C	SIZE: 11 x 8.5	ANS/D	JOB NO.: 16P0055
FILE: 010169-VH01.DWG	CHIEF GEOMATICS SECTION	CONTRACTOR: LETRAC INC.	STATE: ALASKA

ST. PAUL ISLAND, ALASKA
 010169 - ST. PAUL HARBOR
 PROJECT CONDITION SURVEY
 JULY 18 - JULY 26, 2019

REFERENCE NUMBER:
 5-STP-92-07-01
 SHEET 3 OF 12



REV.	DATE	BY	APPR.	DESCRIPTION

U.S. ARMY CORPS OF ENGINEERS ALASKA DISTRICT 204 3RD STREET JBER, ALASKA 99506-0888	U.S. ARMY CORPS OF ENGINEERS	U.P.C.	CONTRACT NO.:
	GREGORY W. GIBSON	010169	1W81KB-16D-0014
DRAWN BY:	ROBERT GOUGHNOUR	PLOT DATE:	TASK ORDER NO.:
CHECKED BY:	TASJG/BJG	08 October 2019	19P0055
SCALE:	1" = 50'	ANSI D	JOB NO.:
FILE:	010169-VH01.DWG	CHIEF GEOMATICS SECTION	CONTRACTOR:
		ETAC INC.	ETAC INC.
		CITY:	STATE:
		WASILLA	ALASKA

ST. PAUL ISLAND, ALASKA
010169 - ST. PAUL HARBOR
 PROJECT CONDITION SURVEY
 JULY 18 - JULY 26, 2019

REFERENCE NUMBER:
5-STP-92-07-01
 SHEET 4 OF 12

