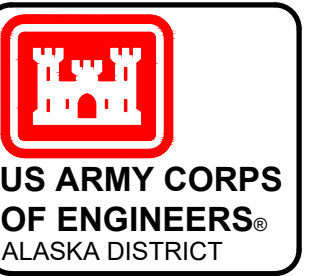
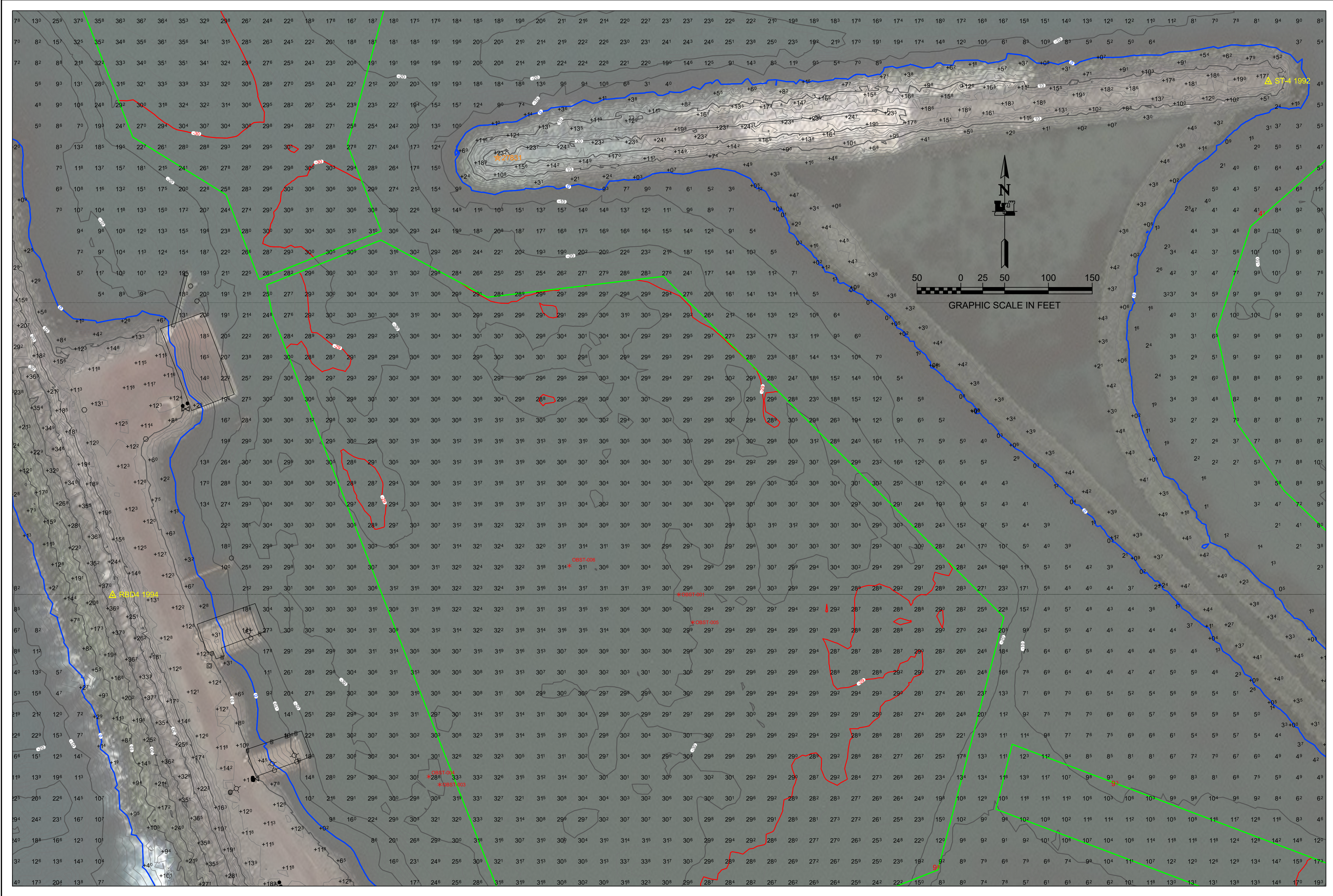


REV.	DATE	BY	APPR.	DESCRIPTION

U.S. ARMY CORPS OF ENGINEERS ALASKA DISTRICT 204 3RD STREET JBER, ALASKA 99506-0888	U.P.C. GREGORY W. GIBSON 010169	CONTRACT NO.: 1W81TK-16-D-0014
DRAWN BY: ROBERT GOUGHNOUR	PLOT DATE: 08 October 2019	TASK ORDER NO.: 19P0055
CHECKED BY: TASHEGGYV	SCALE: 1" = 50'	JOB NO.: 19P0055
TASKING BY: THOMAS SLOAN, CHIEF GEOMATICS SECTION	ANSI D	CONTRACTOR: LETRAC INC.
FILE: 010169-VH01.DWG	CITY: WASILLA	STATE: ALASKA

ST. PAUL ISLAND, ALASKA  
010169 - ST. PAUL HARBOR  
PROJECT CONDITION SURVEY  
JULY 18 - JULY 26, 2019

REFERENCE NUMBER:  
5-STP-92-07-01  
SHEET 5 OF 12



REV.	DATE	BY	APPR.	DESCRIPTION

U.S. ARMY CORPS OF ENGINEERS ALASKA DISTRICT 204 3RD STREET JBER, ALASKA 99506-0888	SURVEYED BY: GREGORY W. GIBSON	U.P.C. 010169	CONTRACT NO.: W811KB-16D-0014
	DRAWN BY: ROBERT GOUGHNOUR	PLOT DATE: 08 October 2019	TASK ORDER NO.: 19P0055
CHECKED BY: TASHIGOVIG	SIZE: 11 x 8.5	ANS/D 1-1-50	JOB NO.: 19P0055
TASHIGOVIG THOMAS SLOAN, CHIEF GEOMATICS SECTION	FILE: 010169-VH01.DWG	STATE: ALASKA	CONTRACTOR: LERIC INC.

ST. PAUL ISLAND, ALASKA  
 010169 - ST. PAUL HARBOR  
 PROJECT CONDITION SURVEY  
 JULY 18 - JULY 26, 2019

REFERENCE NUMBER:  
 5-STP-92-07-01  
 SHEET 6 OF 12