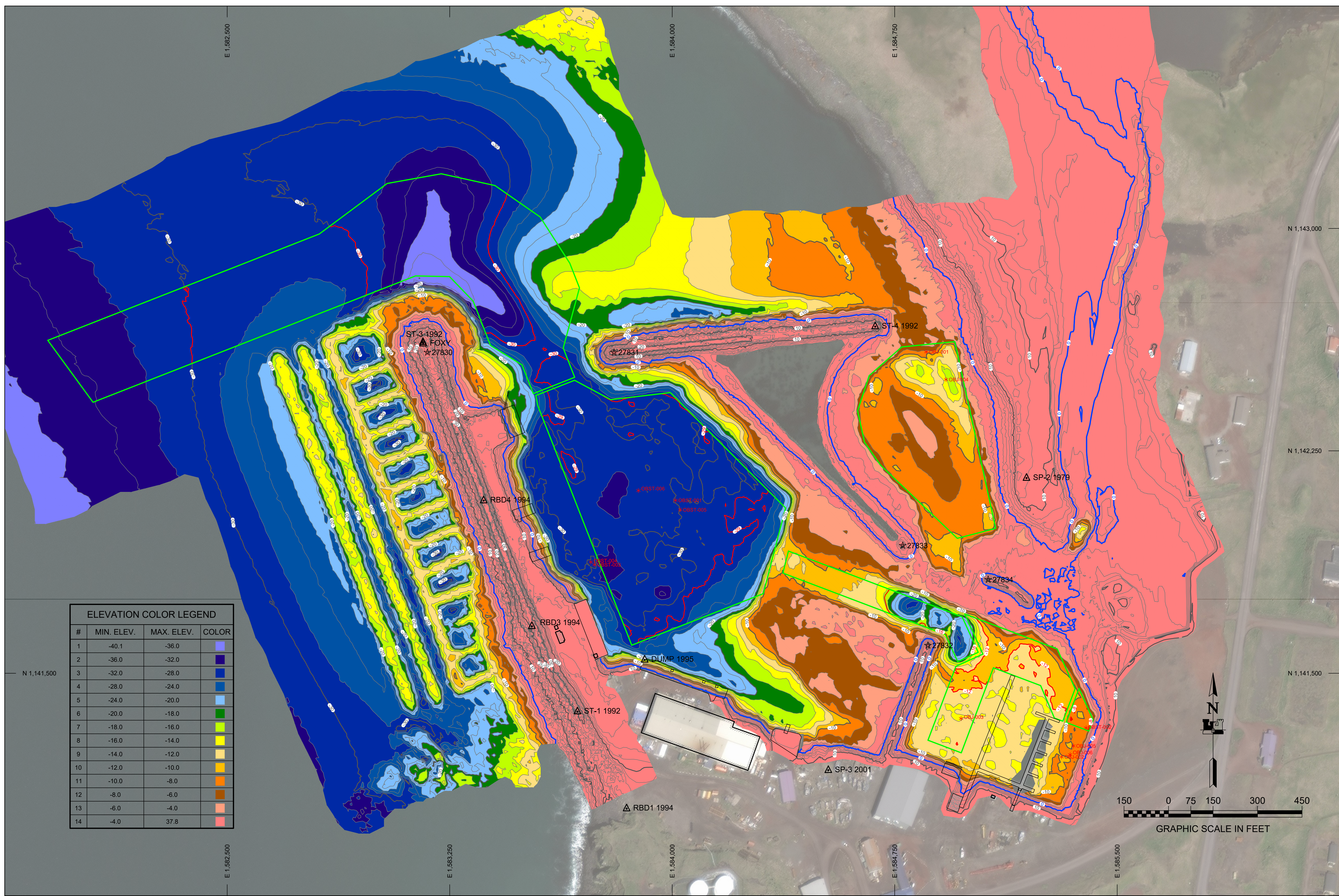


REV.	DATE	BY	APPR.	DESCRIPTION

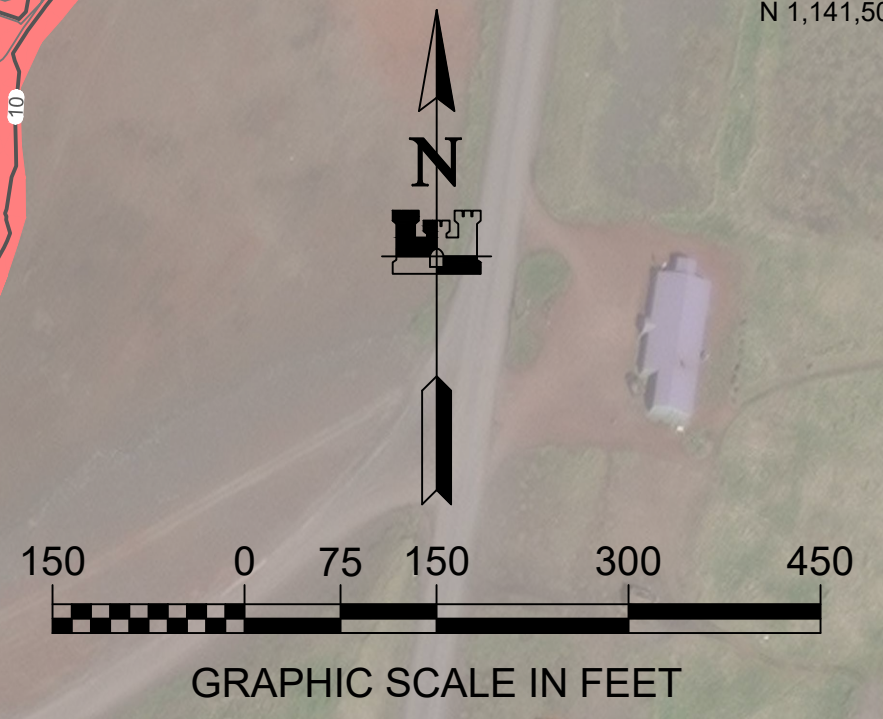
U.S. ARMY CORPS OF ENGINEERS ALASKA DISTRICT 204 3RD STREET JBER, ALASKA 99506-0898		SURVEYED BY: GREGORY W. GIBSON		UPC: 010169		CONTRACT NO.: 1W81KB-16D-0014	
DRAWN BY: ROBERT GOUGHNOUR		PLOT DATE: 08 October 2019		TASK ORDER NO.: 19P0055		JOB NO.:	
CHECKED BY: TASHI GYING		SCALE: 1" = 150'		JOB NO.:		CONTRACTOR:	
FILE: 010169-VH01.DWG		CHIEF GEOMATICS SECTION		LETRAC INC.		STATE: ALASKA	

ST. PAUL ISLAND, ALASKA
010169 - ST. PAUL HARBOR
 PROJECT CONDITION SURVEY
 JULY 18 - JULY 26, 2019

REFERENCE NUMBER:
5-STP-92-07-01
 SHEET 11 OF 12



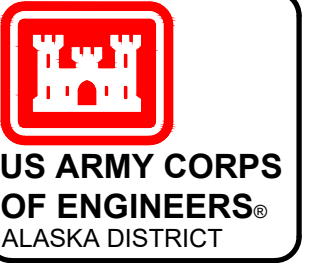
ELEVATION COLOR LEGEND			
#	MIN. ELEV.	MAX. ELEV.	COLOR
1	-40.1	-36.0	Dark Purple
2	-36.0	-32.0	Dark Blue
3	-32.0	-28.0	Blue
4	-28.0	-24.0	Light Blue
5	-24.0	-20.0	Light Green
6	-20.0	-18.0	Green
7	-18.0	-16.0	Yellow-Green
8	-16.0	-14.0	Yellow
9	-14.0	-12.0	Light Orange
10	-12.0	-10.0	Orange
11	-10.0	-8.0	Dark Orange
12	-8.0	-6.0	Brown
13	-6.0	-4.0	Red
14	-4.0	37.8	Dark Red



PROJECT LIMITS		
CORNER#	NORTHING	EASTING
1	1,142,622.52	1,581,895.40
2	1,142,981.30	1,582,810.55
3	1,143,151.52	1,583,039.22
4	1,143,184.20	1,583,221.67
5	1,143,144.58	1,583,402.73
6	1,143,038.69	1,583,554.85
7	1,142,882.64	1,583,654.87
8	1,142,799.55	1,583,687.45
9	1,142,596.81	1,583,632.66
10	1,142,498.09	1,583,671.36
11	1,142,443.01	1,583,531.83
12	1,142,539.77	1,583,493.89
13	1,142,605.59	1,583,387.57
14	1,142,754.87	1,583,329.05
15	1,142,837.58	1,583,249.44
16	1,142,839.79	1,583,134.65
17	1,142,413.84	1,582,047.81
18	1,142,487.90	1,583,670.98
19	1,142,422.69	1,583,792.65
20	1,142,446.47	1,583,993.42
21	1,142,057.34	1,584,382.13
22	1,141,768.53	1,584,306.91
23	1,141,594.69	1,583,863.58
24	1,142,403.08	1,583,546.68
25	1,142,436.72	1,583,540.43
26	1,141,912.08	1,584,391.78
27	1,141,690.43	1,584,977.33

PROJECT LIMITS		
CORNER#	NORTHING	EASTING
28	1,141,570.67	1,585,031.47
29	1,141,539.36	1,584,962.22
30	1,141,630.48	1,584,921.02
31	1,141,837.91	1,584,373.06
32	1,141,699.90	1,584,986.22
33	1,141,582.02	1,585,297.63
34	1,141,447.98	1,585,358.05
35	1,141,338.50	1,585,316.62
36	1,141,349.24	1,585,288.21
37	1,141,458.60	1,585,241.83
38	1,141,518.60	1,585,082.67
39	1,141,231.80	1,584,974.31
40	1,141,274.28	1,584,862.08
41	1,141,523.48	1,584,956.23
42	1,141,564.68	1,585,047.35
43	1,141,448.38	1,585,371.03
44	1,141,342.63	1,585,418.71
45	1,141,305.25	1,585,404.55
46	1,141,334.25	1,585,327.84
47	1,142,618.20	1,584,952.40
48	1,141,988.50	1,585,090.31
49	1,141,955.03	1,584,960.95
50	1,142,201.48	1,584,702.39
51	1,142,278.78	1,584,648.35
52	1,142,384.68	1,584,624.90
53	1,142,503.54	1,584,663.93
54	1,142,600.32	1,584,773.71

OBJECTS AND OBSTRUCTION DATA				
ID	NORTHING	EASTING	DEPTH	APPROX SIZE (FEET)
OBJ-001	1,142,583.9	1,584,856.4	-7.2	28X4X3
OBJ-002	1,141,218.1	1,585,312.5	-9.9	5X2X2
OBJ-003	1,141,347.6	1,584,973.7	-12.9	11X5X2
OBJ-004	1,142,490.4	1,584,922.9	-13.7	7X7X3
OBJ-005	1,141,255.2	1,585,352.1	-7.4	6X4X2
OBJ-006	1,141,225.6	1,585,341.3	-8.4	4X3X2
OBST-001	1,142,083.2	1,584,011.1	-28.0	8X4X2
OBST-002	1,141,315.9	1,585,395.2	-7.8	3X2X2
OBST-003	1,141,866.0	1,583,738.0	-27.2	11X4X3
OBST-004	1,141,875.2	1,583,725.5	-27.6	13X8X3
OBST-005	1,142,051.3	1,584,026.9	-28.9	5X5X1
OBST-006	1,142,116.0	1,583,886.1	-27.8	6X5X3



REV.	DATE	BY	APPR.	DESCRIPTION

U.S. ARMY CORPS OF ENGINEERS ALASKA DISTRICT 204 3RD STREET BER, ALASKA 99506-6988	U.P.C.: 010169	CONTRACT NO.: 1W81KB-16-D-0014	STATE: ALASKA
SURVEYED BY: GREGORY W. GIBSON	PLOT DATE: 08 October 2019	TASK ORDER NO.: 19P0055	CITY: WASILLA
DRAWN BY: ROBERT GOUGHNOUR	CHECKED BY: TASHJGGVIG	JOB NO.: 19P0055	CONTRACTOR: LTRAC INC.
FILE: 010169-VH01.DWG	SCALE: 1" = 150'	SECTION: GEOMATICS	

ST. PAUL ISLAND, ALASKA
010169 - ST. PAUL HARBOR
 PROJECT CONDITION SURVEY
 JULY 18 - JULY 26, 2019

REFERENCE NUMBER:
 5-STP-92-07-01
 SHEET 12 OF 12