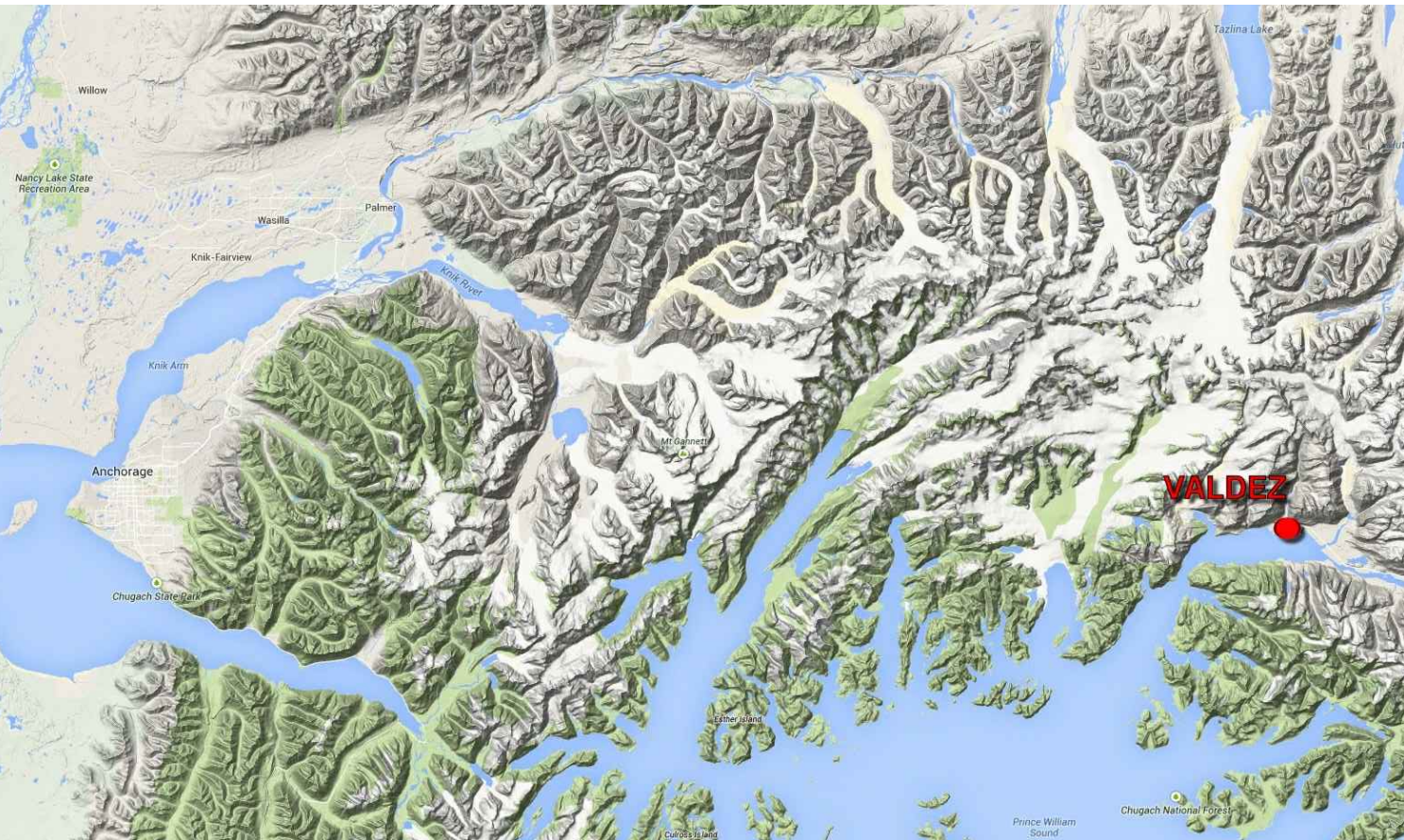




VOLUME COMPUTATIONS			
AREA A: ENTRANCE CHANNEL	MLLW=0	CU. YD.	
AVAILABLE TO PROJECT DEPTH (PD)	-12.0	263	
AVAILABLE TO MAX PAY DEPTH (MP)	-13.0	659	
AREA B: BASIN			
AVAILABLE TO PROJECT DEPTH (PD)	-12.0	2,536	
AVAILABLE TO MAX PAY DEPTH (MP)	-13.0	9,966	
AREA C: USCG APPROACH CHANNEL			
AVAILABLE TO PROJECT DEPTH (PD)	-12.0	172	
AVAILABLE TO MAX PAY DEPTH (MP)	-13.0	536	
AVAILABLE SS AT 3:1 (H:V) & 25' WIDE	VARIABLE	4,504	
TOTAL MAXIMUM VOLUME AVAILABLE (MP + SS)		15,655	

CURVE DATA			
CURVE	RADIUS	ARC LENGTH	DELTA ANGLE
C1	398.00'	294.70'	042°25'29.0"
C2	100.00'	98.481'	056°25'31.1"
C3	100.00'	183.261'	105°00'01.1"
C4	100.00'	157.076'	089°59'52.6"
C5	278.00'	295.969'	060°59'56.9"



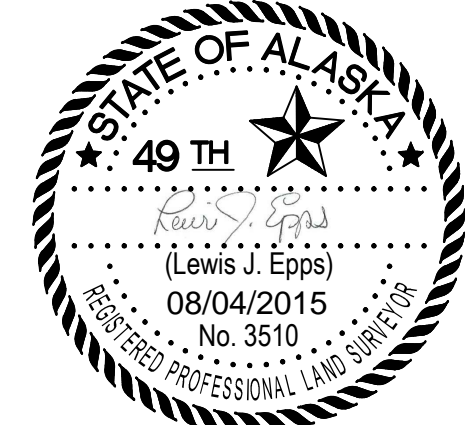
NOTES

- PRIMARY PROJECT HORIZONTAL CONTROL IS ALASKA STATE PLANE, ZONE 3, NAD83, IN US SURVEY FEET BASED ON A FULLY CONSTRAINED STATIC GPS NETWORK HOLDING THE PUBLISHED NAD83(CORS) 2003.00 EPOCH VALUES OF NGS CORS STATIONS: "GLENALLEN CORS ARP" (GNAA - NGS PID AH2492) ; "POTATO POINT 5 CORS ARP" (POTS - NGS PID DJ3043) AND "ANCHORAGE AK DOT CORS ARP" (TBON - NGS PID DK4055) . LOCAL PROJECT HORIZONTAL CONTROL IS ALASKA STATE PLANE, ZONE 3, NAD83, IN US SURVEY FEET HOLDING "VH-4 2000" AS N 2,603,143.94' E 1,578,248.04'.
- VERTICAL CONTROL IS MEAN LOWER LOW WATER (MLLW=0.0), BASED ON THE NOAA/NOS TIDAL BENCH MARK LIST: "945 4240, VALDEZ, PRINCE WILLIAM SOUND, ALASKA, PUBLISHED 08/30/2011". THIS TIDAL DATUM IS BASED ON THE 1983-2001 TIDAL EPOCH AND IS REFERENCED BY HOLDING NOAA/NOS TIDAL BENCH MARK "4240 L 1978" (VM11257) AS 34.30'.
- VERTICAL TIES TO THE NATIONAL SPATIAL REFERENCE SYSTEM ARE BASED ON PUBLISHED NAVD88 ELEVATIONS HOLDING 3.25" STAMPED BRASS CAP, "VH-4 2000" (NGS PID BBDW96), AS 20.60'.
- SOUNDINGS ARE IN FEET AND ARE MINUS UNLESS OTHERWISE INDICATED.
- WAS COLLECTED JUNE 19-21, 2015. SOUNDINGS WERE COLLECTED USING AN R2SONIC 2022 MULTIBEAM ECHOSOUNDER OPERATING AT 200 KHZ. SOUND VELOCITY, THOUGH THE WATER COLUMN WAS DETERMINED WITH AN AML BASE X SOUND VELOCITY PROBE. POSITION AND VESSEL ORIENTATION WERE MEASURED USING AN APPLANIX POSMV 320 V4 SYSTEM. DATA WAS COLLECTED AND PROCESSED USING QINSY 8.1 SOFTWARE. HORIZONTAL CONTROL WAS SURVEYED USING STATIC AND RTK GNSS EQUIPMENT AND TECHNIQUES. VERTICAL CONTROL WAS SURVEYED USING DIFFERENTIAL LEVELING TECHNIQUES.
- THIS DRAWING INDICATES GENERAL CONDITIONS AT THE TIME OF THE SURVEY.
- MAP SOUNDINGS ARE BINNED AT 24 FEET AND ARE SHOAL-BIASED. CONTOURS ARE BASED ON 12 FEET BINNED SHOAL-BIASED SOUNDINGS. VOLUME SOUNDINGS ARE BINNED AT 3 FEET AND ARE MEAN VALUE SOUNDINGS.

SURVEY CONTROL DATA				
STATION	NORTHING	EASTING	MLLW	DESCRIPTION
4240 L 1978	2,603,915.9	1,577,794.0	34.30	3 1/2 INCH NOAA/NOS TIDAL BENCH MARK
BM 98 1964	2,608,238.5	1,584,077.4	16.98	NGS NAVD 88 BENCH MARK
BREAK 1965	2,602,778.67	1,578,004.17	17.75	3 1/2 INCH USACE DBC
NO 21 1966	2,603,536.2	1,577,411.0	20.57	3 1/2 INCH NOAA/NOS TIDAL BENCH MARK
TMP-1 1982	2,603,279.85	1,579,007.85	23.16	3 1/2 INCH USACE DBC
VH-1 1997	2,603,041.94	1,577,733.46	17.77	3 1/4 INCH TERRA SURVEYS SBC
VH-2 1997	2,603,735.41	1,578,538.01	20.51	3 1/4 INCH TERRA SURVEYS SBC
VH-3 2000	2,603,371.17	1,579,485.89	21.26	3 1/4 INCH TERRA SURVEYS SBC
VH-4 2000	2,603,143.94	1,578,248.04	21.90	3 1/4 INCH TERRA SURVEYS SBC
VH-5 2003	2,604,218.42	1,580,381.26	16.79	3 1/4 INCH TERRA SURVEYS SBC
VH-6 2003	2,603,739.93	1,580,595.12	17.59	3 1/4 INCH TERRA SURVEYS SBC
VH-7 2006	2,603,960.18	1,579,020.58	21.24	3 INCH HUGHES & ASSOC. SBC
VH-8 2006	2,604,074.83	1,579,772.68	17.42	3 INCH HUGHES & ASSOC. SBC
VH-9 2009	2,603,513.62	1,578,487.96	21.24	3 1/4 INCH TERRA SURVEYS SBC
WAREHOUSE 1965			25.52	4 INCH NOAA/NOS TIDAL BENCH MARK

NAVIGATION AIDS			
USCG NO.	NORTHING	EASTING	DESCRIPTION
25815	2,602,429	1,577,868	VALDEZ BOAT HARBOR LIGHT 2 RED
25820	2,602,641	1,577,601	VALDEZ BOAT HARBOR LIGHT 3 GREEN

PROJECT LIMITS			PROJECT LIMITS		
CORNER#	NORTHING	EASTING	CORNER#	NORTHING	EASTING
1	2,602,310.63	1,577,595.91	11	2,603,536.25	1,578,610.46
2	2,603,103.53	1,577,876.10	12	2,603,773.16	1,578,570.66
3	2,603,363.42	1,578,185.40	13	2,603,983.57	1,579,822.90
4	2,603,321.97	1,578,063.82	14	2,603,558.47	1,579,894.36
5	2,603,400.25	1,578,116.20	15	2,603,513.76	1,579,804.19
6	2,603,532.00	1,578,128.80	16	2,603,302.72	1,578,548.30
7	2,603,525.77	1,578,193.93	17	2,603,265.48	1,578,326.70
8	2,603,491.96	1,578,190.69	18	2,603,245.08	1,578,205.29
9	2,603,383.83	1,578,306.81	19	2,603,063.55	1,577,989.24
10	2,603,421.06	1,578,528.41	20	2,602,270.65	1,577,709.05



THIS HYDROGRAPHIC SURVEY WAS COMPLETED UNDER THE OVERSIGHT OF AN ACSM/THOSOA CERTIFIED HYDROGRAPHER

David R. Neff C.H. (275)

US Army Corps of Engineers
of Engineers
ALASKA DISTRICT

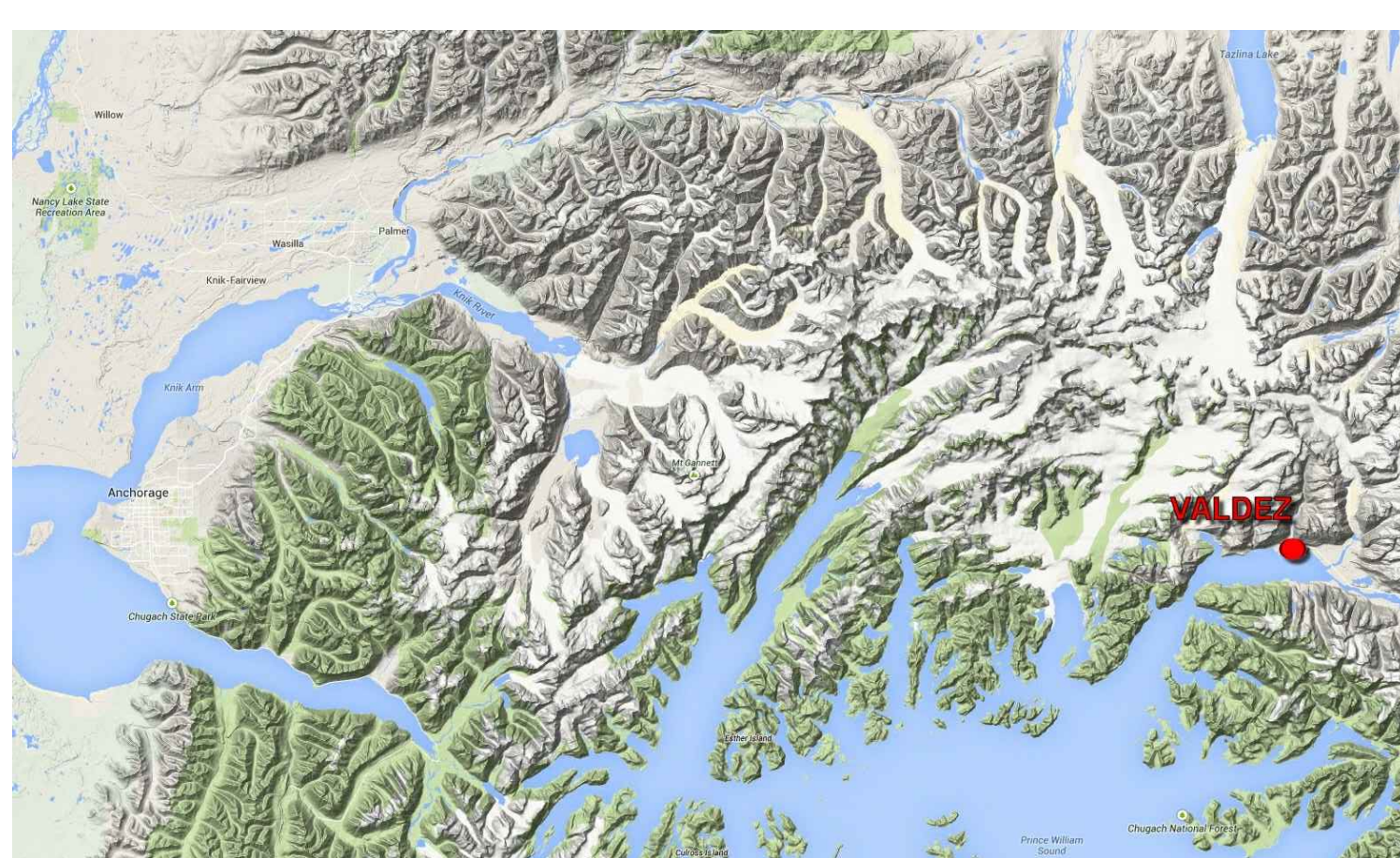
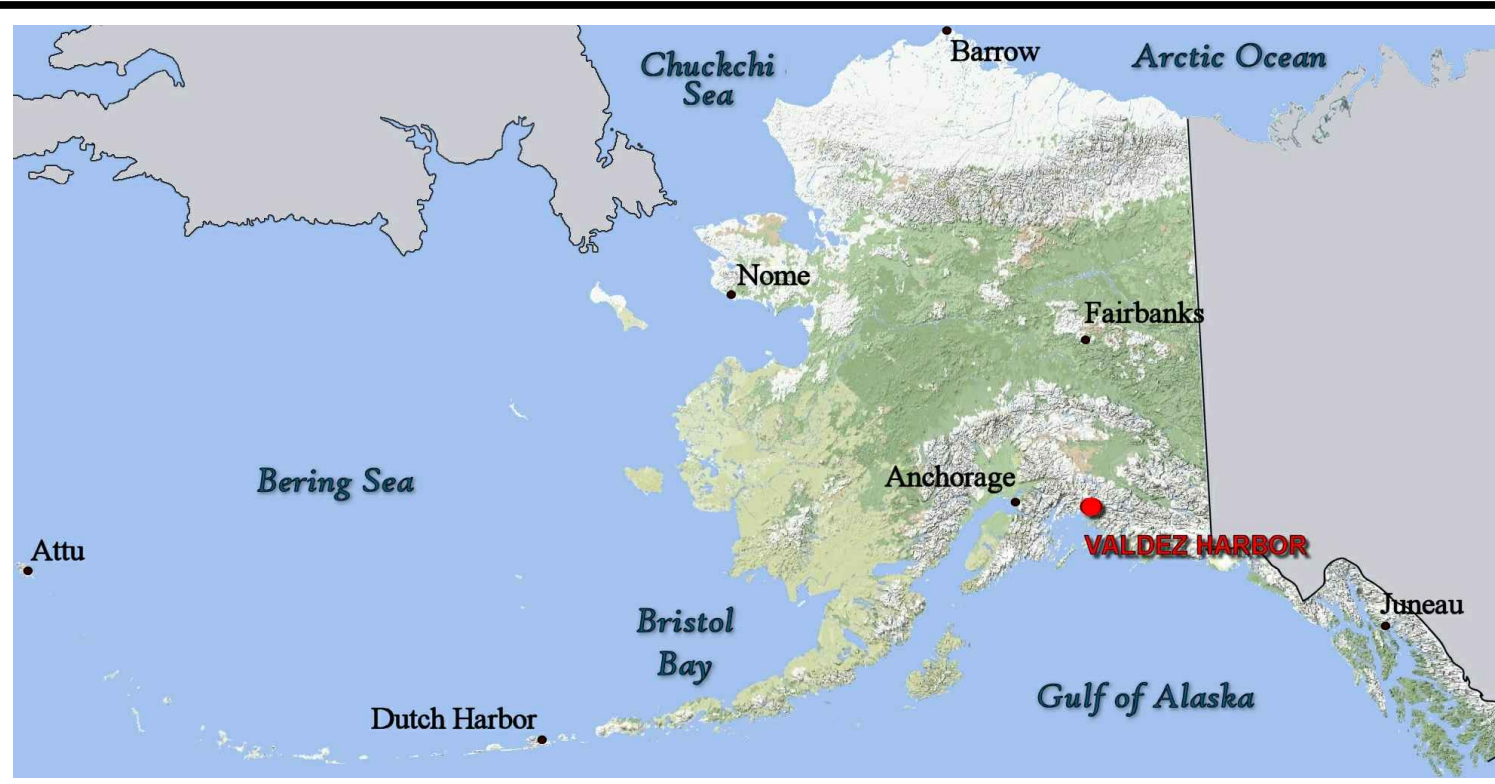
CONTRACT NO. W11H8-14-0003
CONTRACTOR: ETAC INC.
CITY: SAN RAFAEL
STATE: CALIFORNIA
APPROVED: MICHAEL E. JUEHLER
DATE: 08/04/2015
BY: JAWO

DATE: 08/04/2015
CHECKED BY: JAWO
DRAWN BY: JAWO
PROJECT NO.: W11H8-14-0003 (074)
JOB NO.: 100
FILE NAME: 3-VAL-92-07-10
SCALE: AS SHOWN
SIZE: 11x17

U.S. ARMY CORPS OF ENGINEERS
ALASKA DISTRICT
JBER, ALASKA 99506-0988
ETAC INC.
637 L. L. ETRAC, INC.
SAN RAFAEL, CA 94901

VALDEZ, ALASKA
VALDEZ HARBOR
PROJECT CONDITION SURVEY
JUNE 15-22, 2015

SHEET IDENTIFICATION
3-VAL-92-07-10
Sheet 2 of 8



NOTES

1. PRIMARY PROJECT HORIZONTAL CONTROL IS ALASKA STATE PLANE, ZONE 3, NAD83 IN US SURVEY FEET BASED ON A FULLY CONSTRAINED STATIC GPS NETWORK HOLDING THE PUBLISHED NAD83(CORS) 2003.00 EPOCH VALUES OF NGS CORS STATIONS: "GLENALLEN CORS ARP" (GNAA - NGS PID AH2492), "POTATO POINT 5 CORS ARP" (POTS - NGS PID DJ3043) AND "ANCHORAGE AK DOT CORS ARP" (TBOA - NGS PID DK4055).
2. LOCAL PROJECT HORIZONTAL CONTROL IS ALASKA STATE PLANE, ZONE 3, NAD83, IN US SURVEY FEET HOLDING "VH-4 2000" AS N 2,603,143.94, E 1,578,248.04.
3. VERTICAL CONTROL IS MEAN LOWER LOW WATER (MLLW=0.0), BASED ON THE NOAA/NOS TIDAL BENCH MARK LIST: "945 4240, VALDEZ, PRINCE WILLIAM SOUND, ALASKA, PUBLISHED 08/30/2011". THIS TIDAL DATUM IS BASED ON THE 1983-2001 TIDAL EPOCH AND IS REFERENCED BY HOLDING NOAA/NOS TIDAL BENCH MARK "4240 L 1978" (VM1257) AS 34.30.
4. VERTICAL TIES TO THE NATIONAL SPATIAL REFERENCE SYSTEM ARE BASED ON PUBLISHED NAVD88 ELEVATIONS HOLDING 3.25' STAMPED BRASS CAP, "VH-4 2000" (NGS PID BBDW96), AS 20.60.
5. SOUNDINGS ARE IN FEET AND ARE MINUS UNLESS OTHERWISE INDICATED.
6. WAS COLLECTED JUNE 19-21, 2015. SOUNDINGS WERE COLLECTED USING AN R2SONIC 2022 MULTIBeam ECHOSOUNDER OPERATING AT 200 KHZ. SOUND VELOCITY, SOUNDING VELOCITY, POSITION AND VESSEL ORIENTATION WERE MEASURED USING AN AML BASE X SOUND VELOCITY PROBE. POSITION AND VESSEL ORIENTATION WERE MEASURED USING AN AML PLAN POSMV 320 V4 SYSTEM. DATA WAS COLLECTED AND PROCESSED USING QINSY 8.1 SOFTWARE. HORIZONTAL CONTROL WAS SURVEYED USING STATIC AND RTK GNSS EQUIPMENT AND TECHNIQUES. VERTICAL CONTROL WAS SURVEYED USING DIFFERENTIAL LEVELING TECHNIQUES.
7. THIS DRAWING INDICATES GENERAL CONDITIONS AT THE TIME OF THE SURVEY.
8. MAP SOUNDINGS ARE BINNED AT 24 FEET AND ARE SHOAL-BIASED. CONTOURS ARE BASED ON 12 FEET BINNED SHOAL-BIASED SOUNDINGS. VOLUME SOUNDINGS ARE BINNED AT 3 FEET AND ARE MEAN VALUE SOUNDINGS.

SURVEY CONTROL DATA

STATION	NORTHING	EASTING	MLLW	DESCRIPTION
4240 L 1978	2,603,915.9	1,577,794.0	34.30	3 1/2 INCH NOAA/NOS TIDAL BENCH MARK
BM 98 1964	2,608,238.5	1,584,077.4	16.98	NGS NAVD 88 BENCH MARK
BREAK 1965	2,602,778.67	1,578,004.17	17.75	3 1/2 INCH USACE DBC
NO 21 1966	2,603,536.2	1,577,411.0	20.57	3 1/2 INCH NOAA/NOS TIDAL BENCH MARK
TMP-1 1982	2,603,279.85	1,579,007.85	23.16	3 1/2 INCH USACE DBC
VH-1 1997	2,603,041.94	1,577,733.46	17.77	3 1/4 INCH TERRA SURVEYS SBC
VH-2 1997	2,603,735.41	1,578,538.01	20.51	3 1/4 INCH TERRA SURVEYS SBC
VH-3 2000	2,603,371.17	1,579,485.89	21.26	3 1/4 INCH TERRA SURVEYS SBC
VH-4 2000	2,603,143.94	1,578,248.04	21.90	3 1/4 INCH TERRA SURVEYS SBC
VH-5 2003	2,604,218.42	1,580,381.26	16.79	3 1/4 INCH TERRA SURVEYS SBC
VH-6 2003	2,603,739.93	1,580,595.12	17.59	3 1/4 INCH TERRA SURVEYS SBC
VH-7 2006	2,603,960.18	1,579,020.58	21.24	3 INCH HUGHES & ASSOC. SBC
VH-8 2006	2,604,074.83	1,579,772.68	17.42	3 INCH HUGHES & ASSOC. SBC
VH-9 2009	2,603,513.62	1,578,487.96	21.24	3 1/4 INCH TERRA SURVEYS SBC
WAREHOUSE 1965			25.52	4 INCH NOAA/NOS TIDAL BENCH MARK

NAVIGATION AIDS

USCG NO.	NORTHING	EASTING	DESCRIPTION
25815	2,602,429	1,577,868	VALDEZ BOAT HARBOR LIGHT 2 RED
25820	2,602,641	1,577,601	VALDEZ BOAT HARBOR LIGHT 3 GREEN

PROJECT LIMITS

CORNER#	NORTHING	EASTING
1	2,602,310.63	1,577,595.91
2	2,603,103.53	1,577,876.10
3	2,603,363.42	1,578,185.40
4	2,603,321.97	1,578,063.82
5	2,603,400.25	1,578,116.20
6	2,603,532.00	1,578,128.80
7	2,603,525.77	1,578,193.93
8	2,603,491.96	1,578,190.69
9	2,603,383.83	1,578,306.81
10	2,603,421.06	1,578,528.41

PROJECT LIMITS

CORNER#	NORTHING	EASTING
11	2,603,536.25	1,578,610.46
12	2,603,773.16	1,578,570.66
13	2,603,983.57	1,579,822.90
14	2,603,558.47	1,579,894.36
15	2,603,513.76	1,579,804.19
16	2,603,302.72	1,578,548.30
17	2,603,265.48	1,578,326.70
18	2,603,245.08	1,578,205.29
19	2,603,063.55	1,577,989.24
20	2,602,270.65	1,577,709.05



THIS HYDROGRAPHIC SURVEY WAS COMPLETED UNDER THE OVERSIGHT OF AN ACSM/THOSAA CERTIFIED HYDROGRAPHER

David R. Neff C.H. (275)

US Army Corps of Engineers
ALASKA DISTRICT

CONTRACT NO. W11H8-14-0003

CONTRACTOR: ETAC INC.

CITY: SAN RAFAEL

STATE: CALIFORNIA

DATE: 08/04/2015

APPROVED: THOMAS A. SLON

DESIGNED: MICHAEL E. MUELLER

TIME: 08/04/2015

BY: JAWO

DATE: 08/04/2015

DESCRIPTION: 3-VAL-92-07-10

Sheet 3 of 8

DATE: 08/04/2015

CHECKED BY: JAWO

DESIGNED BY: JAWO

PROJECT NO.: W11H8-14-0003

FILE NAME: 3-VAL-92-07-10

SCALE: AS SHOWN

SIZE: 11x17

DATE: 08/04/2015

FILE NAME: 3-VAL-92-07-10

SCALE: AS SHOWN

SIZE: 11x17

DATE: 08/04/2015

CHECKED BY: JAWO

DESIGNED BY: JAWO

PROJECT NO.: W11H8-14-0003

FILE NAME: 3-VAL-92-07-10

SCALE: AS SHOWN

SIZE: 11x17

DATE: 08/04/2015

CHECKED BY: JAWO

DESIGNED BY: JAWO

PROJECT NO.: W11H8-14-0003

FILE NAME: 3-VAL-92-07-10

SCALE: AS SHOWN

SIZE: 11x17

VALDEZ, ALASKA

VALDEZ HARBOR

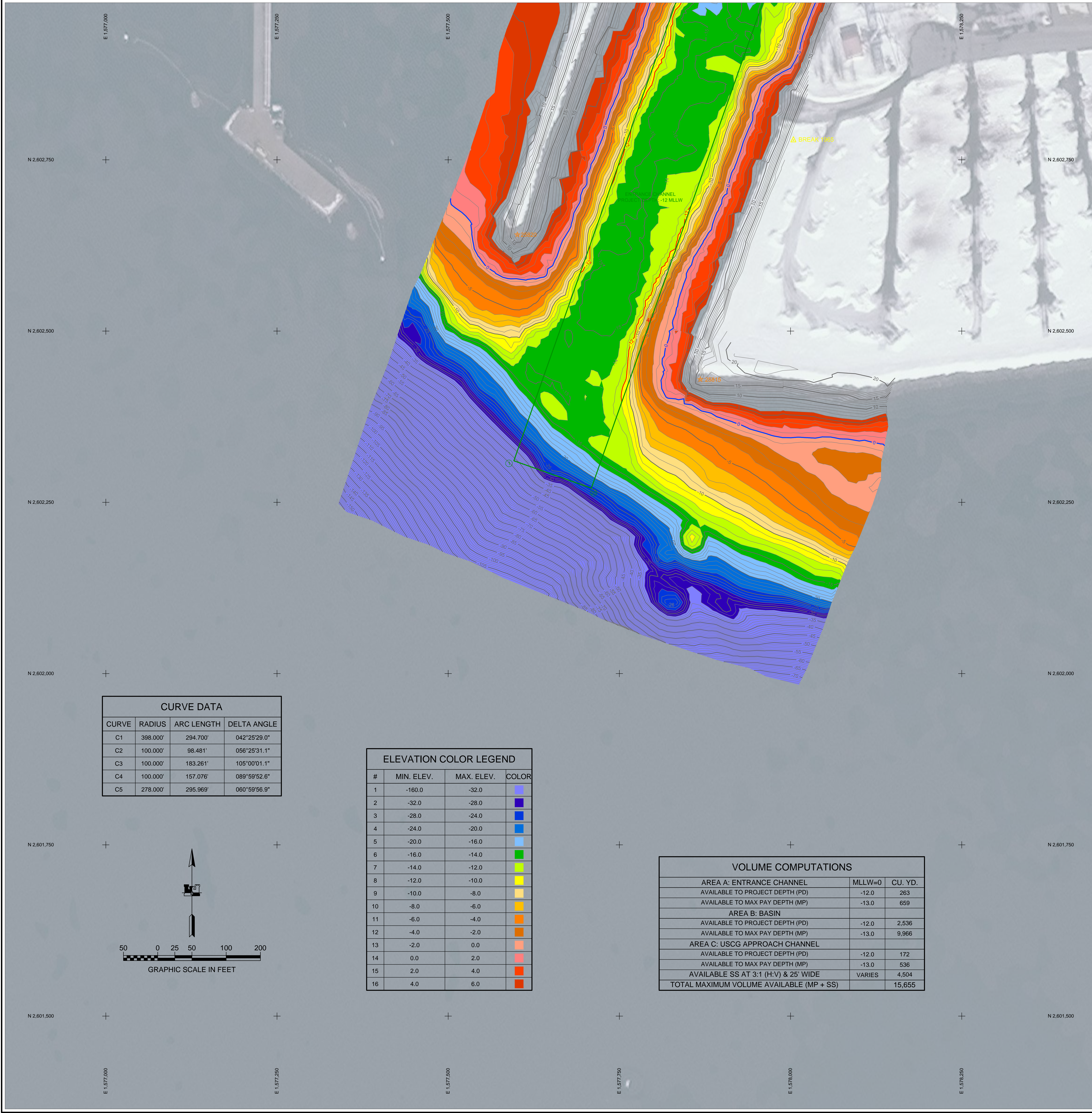
PROJECT CONDITION SURVEY

JUNE 15-22, 2015

SHEET IDENTIFICATION

3-VAL-92-07-10

Sheet 3 of 8



CURVE DATA			
CURVE	RADIUS	ARC LENGTH	DELTA ANGLE
C1	398.000'	294.700'	042°25'29.0"
C2	100.000'	98.481'	058°25'31.1"
C3	100.000'	183.261'	105°00'01.1"
C4	100.000'	157.076'	089°59'52.6"
C5	278.000'	295.969'	060°59'58.9"

ELEVATION COLOR LEGEND			
#	MIN. ELEV.	MAX. ELEV.	COLOR
1	-160.0	-32.0	
2	-32.0	-28.0	
3	-28.0	-24.0	
4	-24.0	-20.0	
5	-20.0	-16.0	
6	-16.0	-14.0	
7	-14.0	-12.0	
8	-12.0	-10.0	
9	-10.0	-8.0	
10	-8.0	-6.0	
11	-6.0	-4.0	
12	-4.0	-2.0	
13	-2.0	0.0	
14	0.0	2.0	
15	2.0	4.0	
16	4.0	6.0	

VOLUME COMPUTATIONS		
AREA A: ENTRANCE CHANNEL	MLLW=0	CU. YD.
AVAILABLE TO PROJECT DEPTH (PD)	-12.0	263
AVAILABLE TO MAX PAY DEPTH (MP)	-13.0	659
AREA B: BASIN		
AVAILABLE TO PROJECT DEPTH (PD)	-12.0	2,536
AVAILABLE TO MAX PAY DEPTH (MP)	-13.0	9,966
AREA C: USCG APPROACH CHANNEL		
AVAILABLE TO PROJECT DEPTH (PD)	-12.0	172
AVAILABLE TO MAX PAY DEPTH (MP)	-13.0	536
AVAILABLE SS AT 3:1 (H:V) & 25' WIDE	VARIES	4,504
TOTAL MAXIMUM VOLUME AVAILABLE (MP + SS)		15,655



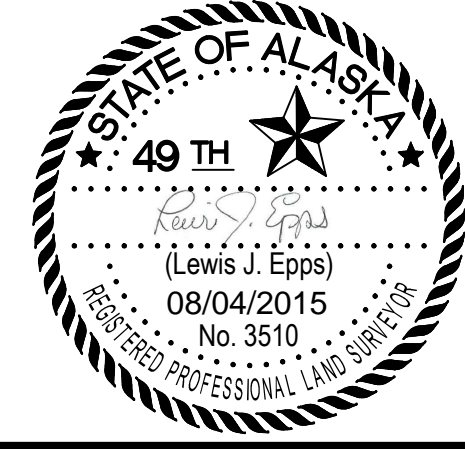
NOTES

- PRIMARY PROJECT HORIZONTAL CONTROL IS ALASKA STATE PLANE, ZONE 3, NAD83, IN US SURVEY FEET BASED ON A FULLY CONSTRAINED STATIC GPS NETWORK HOLDING THE PUBLISHED NAD83(CORS) 2003.00 EPOCH VALUES OF NGS CORS STATIONS: "GLENALLEN CORS ARP" (GNA - NGS PID AH2492), "POTATO POINT 5 CORS ARP" (POTS - NGS PID DJ3043) AND "ANCHORAGE AK DOT CORS ARP" (TBOB - NGS PID DK4055).
- LOCAL PROJECT HORIZONTAL CONTROL IS ALASKA STATE PLANE, ZONE 3, NAD83, IN US SURVEY FEET HOLDING "VH-4 2000" AS N 2,603,143.94', E 1,578,248.04'.
- VERTICAL CONTROL IS MEAN LOWER LOW WATER (MLLW=0.0), BASED ON THE NOAA/NOS TIDAL BENCH MARK LIST: "945 4240, VALDEZ, PRINCE WILLIAM SOUND, ALASKA, PUBLISHED 08/20/2011". THIS TIDAL DATUM IS BASED ON THE 1983-2001 TIDAL EPOCH AND IS REFERENCED BY HOLDING NOAA/NOS TIDAL BENCH MARK "4240 L 1978" (VM11257) AS 34.30'.
- VERTICAL TIES TO THE NATIONAL SPATIAL REFERENCE SYSTEM ARE BASED ON PUBLISHED NAVD88 ELEVATIONS HOLDING 3.25" STAMPED BRASS CAP, "VH-4 2000" (NGS PID BBDW96), AS 20.60'.
- SOUNDINGS ARE IN FEET AND ARE MINUS UNLESS OTHERWISE INDICATED.
- WAS COLLECTED JUNE 19-21, 2015. SOUNDINGS WERE COLLECTED USING AN R2SONIC 2022 MULTIBEAM ECHOSOUNDER OPERATING AT 200 KHZ. SOUND VELOCITY, THOUGH THE WATER COLUMN WAS DETERMINED WITH AN AML BASE X SOUND VELOCITY PROBE. POSITION AND VESSEL ORIENTATION WERE MEASURED USING AN APPLANIX POSMV 320 V4 SYSTEM. DATA WAS COLLECTED AND PROCESSED USING QINSY 8.1 SOFTWARE. HORIZONTAL CONTROL WAS SURVEYED USING STATIC AND RTK GNSS EQUIPMENT AND TECHNIQUES. VERTICAL CONTROL WAS SURVEYED USING DIFFERENTIAL LEVELING TECHNIQUES.
- THIS DRAWING INDICATES GENERAL CONDITIONS AT THE TIME OF THE SURVEY.
- MAP SOUNDINGS ARE BINNED AT 24 FEET AND ARE SHOAL-BIASED. CONTOURS ARE BASED ON 12 FEET BINNED SHOAL-BIASED SOUNDINGS. VOLUME SOUNDINGS ARE BINNED AT 3 FEET AND ARE MEAN VALUE SOUNDINGS.

SURVEY CONTROL DATA				
STATION	NORTHING	EASTING	MLLW	DESCRIPTION
4240 L 1978	2,603,915.9	1,577,794.0	34.30	3 1/2 INCH NOAA/NOS TIDAL BENCH MARK
BM 98 1964	2,608,238.5	1,584,077.4	16.98	NGS NAVD 88 BENCH MARK
BREAK 1965	2,602,778.67	1,578,004.17	17.75	3 1/2 INCH USACE DBC
NO 21 1966	2,603,536.2	1,577,411.0	20.57	3 1/2 INCH NOAA/NOS TIDAL BENCH MARK
TMP-1 1982	2,603,279.85	1,579,007.85	23.16	3 1/2 INCH USACE DBC
VH-1 1997	2,603,041.94	1,577,733.46	17.77	3 1/4 INCH TERRA SURVEYS SBC
VH-2 1997	2,603,735.41	1,578,538.01	20.51	3 1/4 INCH TERRA SURVEYS SBC
VH-3 2000	2,603,371.17	1,579,485.89	21.26	3 1/4 INCH TERRA SURVEYS SBC
VH-4 2000	2,603,143.94	1,578,248.04	21.90	3 1/4 INCH TERRA SURVEYS SBC
VH-5 2003	2,604,218.42	1,580,381.26	16.79	3 1/4 INCH TERRA SURVEYS SBC
VH-6 2003	2,603,739.93	1,580,595.12	17.59	3 1/4 INCH TERRA SURVEYS SBC
VH-7 2006	2,603,960.18	1,579,020.58	21.24	3 INCH HUGHES & ASSOC. SBC
VH-8 2006	2,604,074.83	1,579,772.68	17.42	3 INCH HUGHES & ASSOC. SBC
VH-9 2009	2,603,513.62	1,578,487.96	21.24	3 1/4 INCH TERRA SURVEYS SBC
WAREHOUSE 1965			25.52	4 INCH NOAA/NOS TIDAL BENCH MARK

NAVIGATION AIDS			
USCG NO.	NORTHING	EASTING	DESCRIPTION
25815	2,602,429	1,577,868	VALDEZ BOAT HARBOR LIGHT 2 RED
25820	2,602,641	1,577,601	VALDEZ BOAT HARBOR LIGHT 3 GREEN

PROJECT LIMITS			PROJECT LIMITS		
CORNER#	NORTHING	EASTING	CORNER#	NORTHING	EASTING
1	2,602,310.63	1,577,595.91	11	2,603,536.25	1,578,610.46
2	2,603,103.53	1,577,876.10	12	2,603,773.16	1,578,570.66
3	2,603,363.42	1,578,185.40	13	2,603,983.57	1,579,822.90
4	2,603,321.97	1,578,063.82	14	2,603,558.47	1,579,894.36
5	2,603,400.25	1,578,116.20	15	2,603,513.76	1,579,804.19
6	2,603,532.00	1,578,128.80	16	2,603,302.72	1,578,548.30
7	2,603,525.77	1,578,193.93	17	2,603,265.48	1,578,326.70
8	2,603,491.96	1,578,190.69	18	2,603,245.08	1,578,205.29
9	2,603,383.83	1,578,306.81	19	2,603,063.55	1,577,989.24
10	2,603,421.06	1,578,528.41	20	2,602,270.65	1,577,709.05



THIS HYDROGRAPHIC SURVEY WAS COMPLETED UNDER THE OVERSIGHT OF AN ACSM/THOSOA CERTIFIED HYDROGRAPHER

David R. Neff C.H. (275)

US Army Corps of Engineers
of Engineers
ALASKA DISTRICT

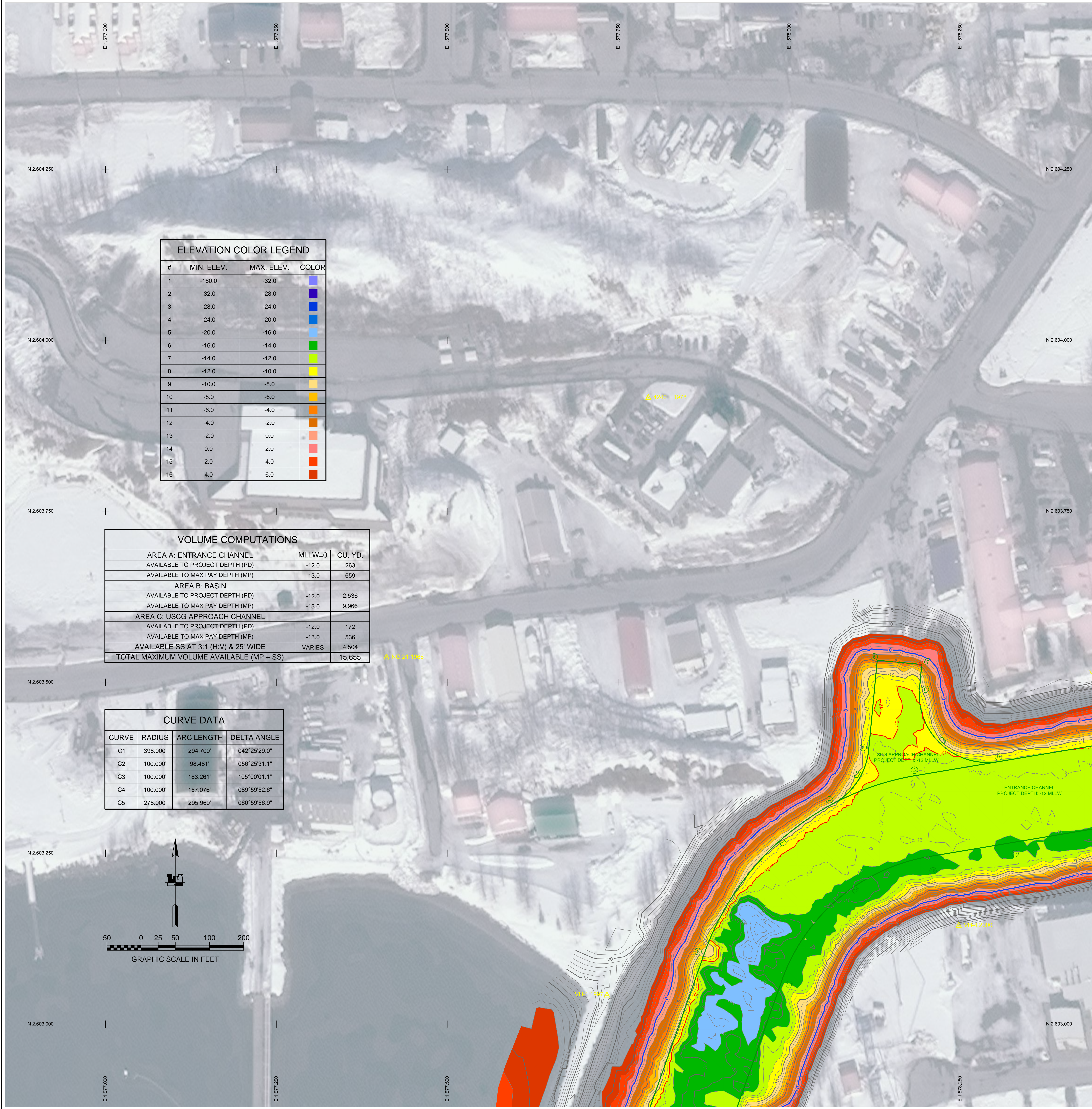
CONTRACT NO. W11H8-14-2-003
CONTRACTOR: ETAC INC.
CITY: SAN RAFAEL
STATE: CALIFORNIA
APPROVED: MICHAEL E. JUEHLER
THOMAS A. SLON
DATE: 08/04/2015
BY: [Signature]
DESCRIPTION: VALDEZ BOAT HARBOR

DATE: 06-22-2015
CHECKED BY: [Signature]
DRAWN BY: [Signature]
PROJECT NO.: W11H8-14-2-003 (004)
JOB NO.: 0001
FILE NAME: 0001-VALDEZ.DWG
SCALE: AS SHOWN
SIZE: 11x17

U.S. ARMY CORPS OF ENGINEERS
ALASKA DISTRICT
JBER, ALASKA 99506-0988
ETAC INC.
637 LILAC AVE, 100
SAN RAFAEL, CA 94901

VALDEZ, ALASKA
VALDEZ HARBOR
PROJECT CONDITION SURVEY
JUNE 15-22, 2015

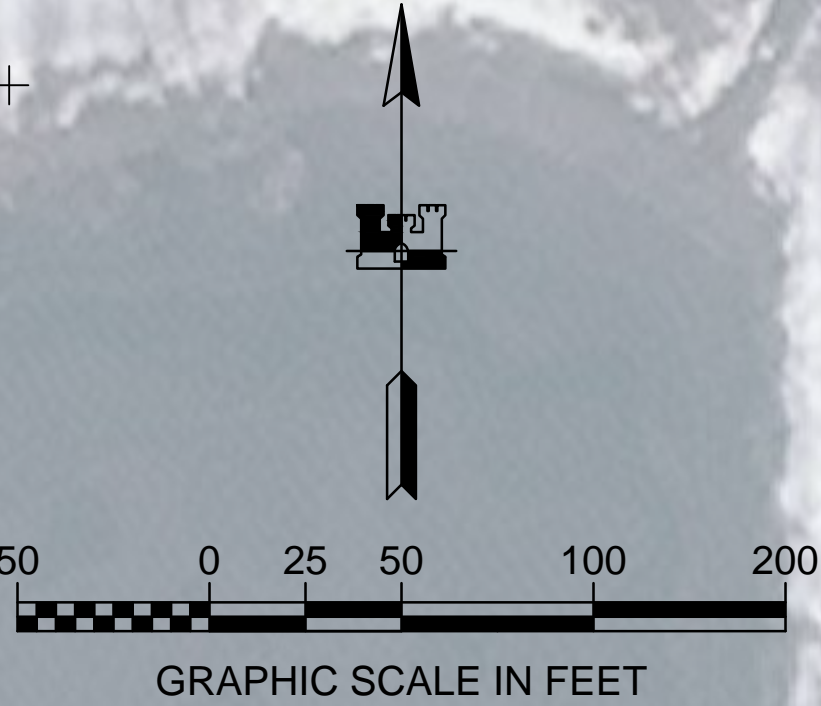
SHEET IDENTIFICATION
3-VAL-92-07-10
Sheet 5 of 8



ELEVATION COLOR LEGEND			
#	MIN. ELEV.	MAX. ELEV.	COLOR
1	-160.0	-32.0	
2	-32.0	-28.0	
3	-28.0	-24.0	
4	-24.0	-20.0	
5	-20.0	-16.0	
6	-16.0	-14.0	
7	-14.0	-12.0	
8	-12.0	-10.0	
9	-10.0	-8.0	
10	-8.0	-6.0	
11	-6.0	-4.0	
12	-4.0	-2.0	
13	-2.0	0.0	
14	0.0	2.0	
15	2.0	4.0	
16	4.0	6.0	

VOLUME COMPUTATIONS			
AREA A: ENTRANCE CHANNEL		MLLW=0	CU. YD.
AVAILABLE TO PROJECT DEPTH (PD)		-12.0	263
AVAILABLE TO MAX PAY DEPTH (MP)		-13.0	659
AREA B: BASIN			
AVAILABLE TO PROJECT DEPTH (PD)		-12.0	2,536
AVAILABLE TO MAX PAY DEPTH (MP)		-13.0	9,966
AREA C: USCG APPROACH CHANNEL			
AVAILABLE TO PROJECT DEPTH (PD)		-12.0	172
AVAILABLE TO MAX PAY DEPTH (MP)		-13.0	536
AVAILABLE SS AT 3:1 (H:V) & 25' WIDE		VARIES	4,504
TOTAL MAXIMUM VOLUME AVAILABLE (MP + SS)			15,655

CURVE DATA			
CURVE	RADIUS	ARC LENGTH	DELTA ANGLE
C1	398.000'	294.700'	042°25'29.0"
C2	100.000'	98.481'	056°25'31.1"
C3	100.000'	183.261'	105°00'01.1"
C4	100.000'	157.076'	089°59'52.6"
C5	278.000'	295.969'	060°59'56.9"



- NOTES**
- PRIMARY PROJECT HORIZONTAL CONTROL IS ALASKA STATE PLANE, ZONE 3, NAD83, IN US SURVEY FEET BASED ON A FULLY CONSTRAINED STATIC GPS NETWORK HOLDING THE PUBLISHED NAD83(CORS) 2003.00 EPOCH VALUES OF NGS CORS STATIONS: "GLENALLEN CORS ARP" (GNAA - NGS PID AH2492) ; "POTATO POINT 5 CORS ARP" (POTS - NGS PID DJ3043) AND "ANCHORAGE AK DOT CORS ARP" (TBON - NGS PID DK4055) . LOCAL PROJECT HORIZONTAL CONTROL IS ALASKA STATE PLANE, ZONE 3, NAD83, IN US SURVEY FEET HOLDING "VH-4 2000" AS N 2,603,143.94 ; E 1,578,248.04.
 - VERTICAL CONTROL IS MEAN LOWER LOW WATER (MLLW=0.0), BASED ON THE NOAA/NOS TIDAL BENCH MARK LIST: "945 4240, VALDEZ, PRINCE WILLIAM SOUND, ALASKA, PUBLISHED 08/30/2011". THIS TIDAL DATUM IS BASED ON THE 1983-2001 TIDAL EPOCH AND IS REFERENCED BY HOLDING NOAA/NOS TIDAL BENCH MARK "4240 L 1978" (VM11257) AS 34.30.
 - VERTICAL TIES TO THE NATIONAL SPATIAL REFERENCE SYSTEM ARE BASED ON PUBLISHED NAVD88 ELEVATIONS HOLDING 3.25" STAMPED BRASS CAP, "VH-4 2000" (NGS PID BBDW96), AS 20.60.
 - SOUNDINGS ARE IN FEET AND ARE MINUS UNLESS OTHERWISE INDICATED.
 - WAS COLLECTED JUNE 19-21, 2015. SOUNDINGS WERE COLLECTED USING AN R2SONIC 2022 MULTIBEAM ECHOSOUNDER OPERATING AT 200 KHZ. SOUND VELOCITY, THROUGH THE WATER COLUMN WAS DETERMINED WITH AN AML BASE X SOUND VELOCITY PROBE. POSITION AND VESSEL ORIENTATION WERE MEASURED USING AN APPLANIX POSMV 320 V4 SYSTEM. DATA WAS COLLECTED AND PROCESSED USING QINSY 8.1 SOFTWARE. HORIZONTAL CONTROL WAS SURVEYED USING STATIC AND RTK GNSS EQUIPMENT AND TECHNIQUES. VERTICAL CONTROL WAS SURVEYED USING DIFFERENTIAL LEVELING TECHNIQUES.
 - THIS DRAWING INDICATES GENERAL CONDITIONS AT THE TIME OF THE SURVEY.
 - MAP SOUNDINGS ARE BINNED AT 24 FEET AND ARE SHOAL-BIASED. CONTOURS ARE BASED ON 12 FEET BINNED SHOAL-BIASED SOUNDINGS. VOLUME SOUNDINGS ARE BINNED AT 3 FEET AND ARE MEAN VALUE SOUNDINGS.

SURVEY CONTROL DATA				
STATION	NORTHING	EASTING	MLLW	DESCRIPTION
4240 L 1978	2,603,915.9	1,577,794.0	34.30	3 1/2 INCH NOAA/NOS TIDAL BENCH MARK
BM 98 1964	2,608,238.5	1,584,077.4	16.98	NGS NAVD 88 BENCH MARK
BREAK 1965	2,602,778.67	1,578,004.17	17.75	3 1/2 INCH USACE DBC
NO 21 1966	2,603,536.2	1,577,411.0	20.57	3 1/2 INCH NOAA/NOS TIDAL BENCH MARK
TMP-1 1982	2,603,279.85	1,579,007.85	23.16	3 1/2 INCH USACE DBC
VH-1 1997	2,603,041.94	1,577,733.46	17.77	3 1/4 INCH TERRA SURVEYS SBC
VH-2 1997	2,603,735.41	1,578,538.01	20.51	3 1/4 INCH TERRA SURVEYS SBC
VH-3 2000	2,603,371.17	1,579,485.89	21.26	3 1/4 INCH TERRA SURVEYS SBC
VH-4 2000	2,603,143.94	1,578,248.04	21.90	3 1/4 INCH TERRA SURVEYS SBC
VH-5 2003	2,604,218.42	1,580,381.26	16.79	3 1/4 INCH TERRA SURVEYS SBC
VH-6 2003	2,603,739.93	1,580,595.12	17.59	3 1/4 INCH TERRA SURVEYS SBC
VH-7 2006	2,603,960.18	1,579,020.58	21.24	3 INCH HUGHES & ASSOC. SBC
VH-8 2006	2,604,074.83	1,579,772.68	17.42	3 INCH HUGHES & ASSOC. SBC
VH-9 2009	2,603,513.62	1,578,487.96	21.24	3 1/4 INCH TERRA SURVEYS SBC
WAREHOUSE 1965			25.52	4 INCH NOAA/NOS TIDAL BENCH MARK

NAVIGATION AIDS			
USCG NO.	NORTHING	EASTING	DESCRIPTION
25815	2,602,429	1,577,868	VALDEZ BOAT HARBOR LIGHT 2 RED
25820	2,602,641	1,577,601	VALDEZ BOAT HARBOR LIGHT 3 GREEN

PROJECT LIMITS			PROJECT LIMITS		
CORNER#	NORTHING	EASTING	CORNER#	NORTHING	EASTING
1	2,602,310.63	1,577,595.91	11	2,603,536.25	1,578,610.46
2	2,603,103.53	1,577,876.10	12	2,603,773.16	1,578,570.66
3	2,603,363.42	1,578,185.40	13	2,603,983.57	1,579,822.90
4	2,603,321.97	1,578,063.82	14	2,603,558.47	1,579,894.36
5	2,603,400.25	1,578,116.20	15	2,603,513.76	1,579,804.19
6	2,603,532.00	1,578,128.80	16	2,603,302.72	1,578,548.30
7	2,603,525.77	1,578,193.93	17	2,603,265.48	1,578,326.70
8	2,603,491.96	1,578,190.69	18	2,603,245.08	1,578,205.29
9	2,603,383.83	1,578,306.81	19	2,603,063.55	1,577,989.24
10	2,603,421.06	1,578,528.41	20	2,602,270.65	1,577,709.05



THIS HYDROGRAPHIC SURVEY WAS COMPLETED UNDER THE OVERSIGHT OF AN ACSM/THOSAA CERTIFIED HYDROGRAPHER

David R. Neff C.H. (275)

US Army Corps of Engineers
of Engineers
ALASKA DISTRICT

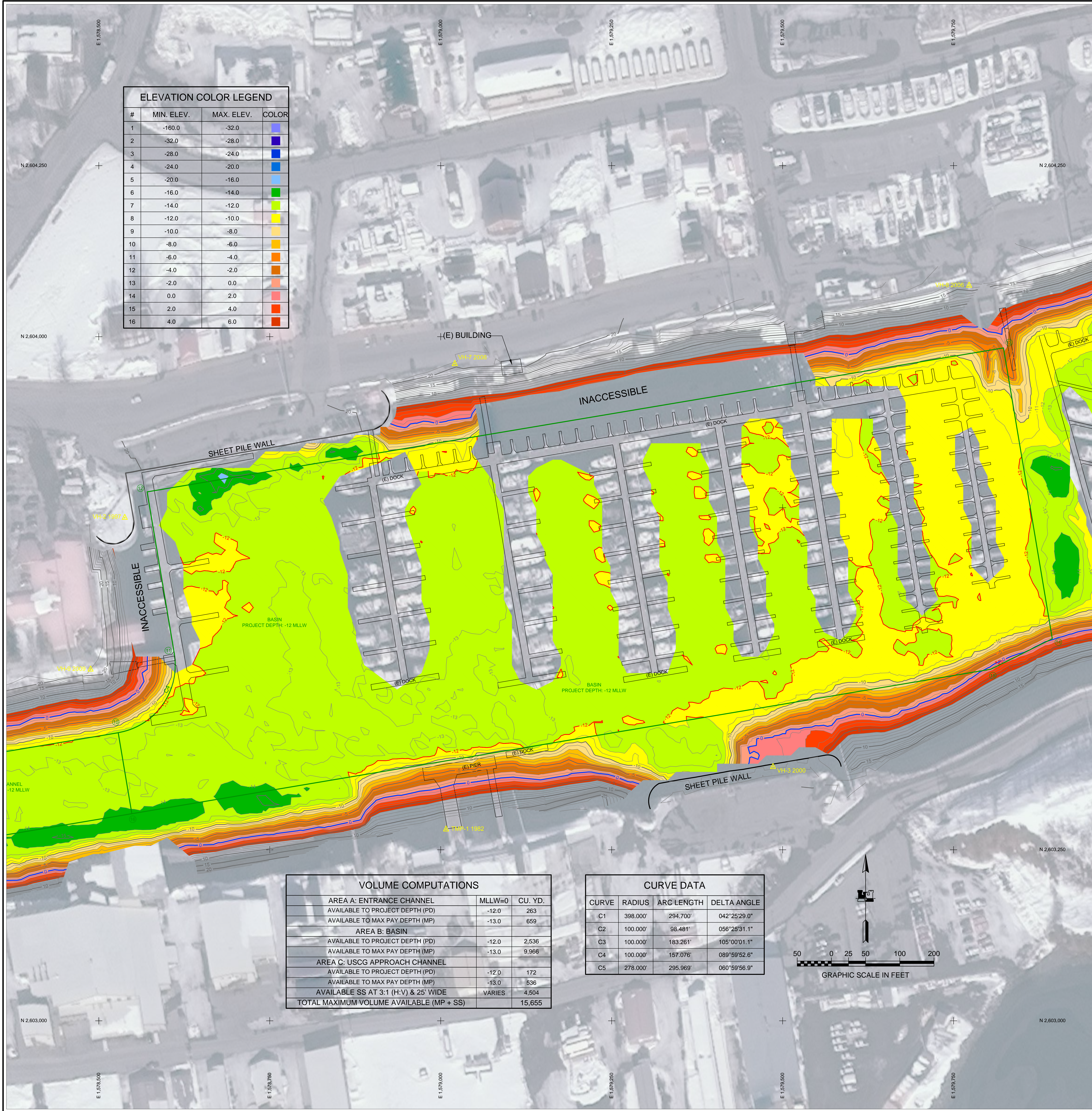
CONTRACT NO. W11H8-14-0003
CONTRACTOR: ETAC INC.
CITY: SAN RAFAEL
STATE: CALIFORNIA
APPROVED: MICHAEL E. JUEHLER
THOMAS F. SLON
DATE: 08/04/2015
BY: [Signature]

DATE: 06-15-2015
CHECKED BY: [Signature]
DRAWN BY: [Signature]
SCALE: 1"=100'
FILE NAME: [Signature]
SIZE: [Signature]

U.S. ARMY CORPS OF ENGINEERS
ALASKA DISTRICT
JBER, ALASKA 99506-0988
ETAC INC.
637 LILAC AVE, 100
SAN RAFAEL, CA 94901

VALDEZ, ALASKA
VALDEZ HARBOR
PROJECT CONDITION SURVEY
JUNE 15-22, 2015

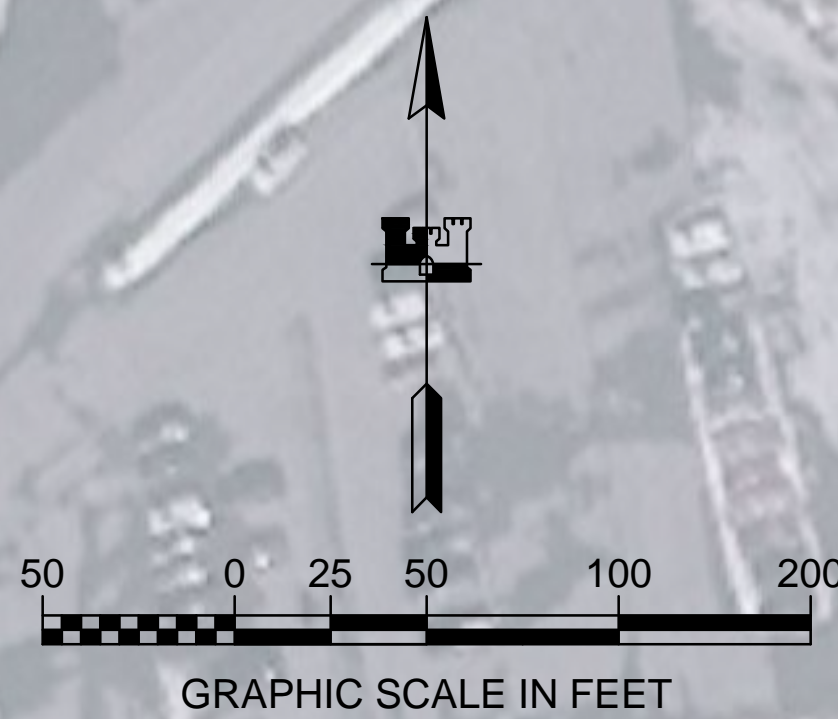
SHEET IDENTIFICATION
3-VAL-92-07-10
Sheet 6 of 8



ELEVATION COLOR LEGEND			
#	MIN. ELEV.	MAX. ELEV.	COLOR
1	-160.0	-32.0	
2	-32.0	-28.0	
3	-28.0	-24.0	
4	-24.0	-20.0	
5	-20.0	-16.0	
6	-16.0	-14.0	
7	-14.0	-12.0	
8	-12.0	-10.0	
9	-10.0	-8.0	
10	-8.0	-6.0	
11	-6.0	-4.0	
12	-4.0	-2.0	
13	-2.0	0.0	
14	0.0	2.0	
15	2.0	4.0	
16	4.0	6.0	

VOLUME COMPUTATIONS		
AREA A: ENTRANCE CHANNEL	MLLW=0	CU. YD.
AVAILABLE TO PROJECT DEPTH (PD)	-12.0	263
AVAILABLE TO MAX PAY DEPTH (MP)	-13.0	659
AREA B: BASIN		
AVAILABLE TO PROJECT DEPTH (PD)	-12.0	2,536
AVAILABLE TO MAX PAY DEPTH (MP)	-13.0	9,966
AREA C: USCG APPROACH CHANNEL		
AVAILABLE TO PROJECT DEPTH (PD)	-12.0	172
AVAILABLE TO MAX PAY DEPTH (MP)	-13.0	536
AVAILABLE SS AT 3:1 (H:V) & 25' WIDE	VARIES	4,504
TOTAL MAXIMUM VOLUME AVAILABLE (MP + SS)		15,655

CURVE DATA			
CURVE	RADIUS	ARC LENGTH	DELTA ANGLE
C1	398.000'	294.700'	042°25'29.0"
C2	100.000'	98.481'	056°28'31.1"
C3	100.000'	183.261'	105°00'01.1"
C4	100.000'	157.076'	089°59'52.6"
C5	278.000'	295.969'	060°59'56.9"



- ### NOTES
- PRIMARY PROJECT HORIZONTAL CONTROL IS ALASKA STATE PLANE, ZONE 3, NAD83 IN US SURVEY FEET BASED ON A FULLY CONSTRAINED STATIC GPS NETWORK HOLDING THE PUBLISHED NAD83(CORS) 2003.00 EPOCH VALUES OF NGS CORS STATIONS: 'GLENALLEN CORS ARP' (GNAA - NGS PID AH2492), 'POTATO POINT 5 CORS ARP' (POTS - NGS PID DJ3043) AND 'ANCHORAGE AK DOT CORS ARP' (TBOA - NGS PID DK4055).
 - LOCAL PROJECT HORIZONTAL CONTROL IS ALASKA STATE PLANE, ZONE 3, NAD83, IN US SURVEY FEET HOLDING 'VH-4 2000' AS N 2,603,143.94', E 1,578,248.04'.
 - VERTICAL TIES TO THE NATIONAL SPATIAL REFERENCE SYSTEM ARE BASED ON PUBLISHED NAVD88 ELEVATIONS HOLDING 3.25' STAMPED BRASS CAP, 'VH-4 2000' (NGS PID BBDW96), AS 20.60'.
 - SOUNDINGS ARE IN FEET AND ARE MINUS UNLESS OTHERWISE INDICATED.
 - WAS COLLECTED JUNE 19-21, 2015. SOUNDINGS WERE COLLECTED USING AN R2SONIC 2022 MULTIBeam ECHOSOUNDER OPERATING AT 200 KHZ. SOUND VELOCITY, THROUGH THE WATER COLUMN WAS DETERMINED WITH AN AML BASE X SOUND VELOCITY PROBE. POSITION AND VESSEL ORIENTATION WERE MEASURED USING AN APPLANIX POSMV 320 V4 SYSTEM. DATA WAS COLLECTED AND PROCESSED USING QINSY 8.1 SOFTWARE. HORIZONTAL CONTROL WAS SURVEYED USING STATIC AND RTK GNSS EQUIPMENT AND TECHNIQUES. VERTICAL CONTROL WAS SURVEYED USING DIFFERENTIAL LEVELING TECHNIQUES.
 - THIS DRAWING INDICATES GENERAL CONDITIONS AT THE TIME OF THE SURVEY.
 - MAP SOUNDINGS ARE BINNED AT 24 FEET AND ARE SHOAL-BIASED. CONTOURS ARE BASED ON 12 FEET BINNED SHOAL-BIASED SOUNDINGS. VOLUME SOUNDINGS ARE BINNED AT 3 FEET AND ARE MEAN VALUE SOUNDINGS.

SURVEY CONTROL DATA				
STATION	NORTHING	EASTING	MLLW	DESCRIPTION
4240 L 1978	2,603,915.9	1,577,794.0	34.30	3 1/2 INCH NOAA/NOS TIDAL BENCH MARK
BM 98 1964	2,608,238.5	1,584,077.4	16.98	NGS NAVD 88 BENCH MARK
BREAK 1965	2,602,778.67	1,578,004.17	17.75	3 1/2 INCH USACE DBC
NO 21 1966	2,603,536.2	1,577,411.0	20.57	3 1/2 INCH NOAA/NOS TIDAL BENCH MARK
TMP-1 1982	2,603,279.85	1,579,007.85	23.16	3 1/2 INCH USACE DBC
VH-1 1997	2,603,041.94	1,577,733.46	17.77	3 1/4 INCH TERRA SURVEYS SBC
VH-2 1997	2,603,735.41	1,578,538.01	20.51	3 1/4 INCH TERRA SURVEYS SBC
VH-3 2000	2,603,371.17	1,579,485.89	21.26	3 1/4 INCH TERRA SURVEYS SBC
VH-4 2000	2,603,143.94	1,578,248.04	21.90	3 1/4 INCH TERRA SURVEYS SBC
VH-5 2003	2,604,218.42	1,580,381.26	16.79	3 1/4 INCH TERRA SURVEYS SBC
VH-6 2003	2,603,739.93	1,580,595.12	17.59	3 1/4 INCH TERRA SURVEYS SBC
VH-7 2006	2,603,960.18	1,579,020.58	21.24	3 INCH HUGHES & ASSOC. SBC
VH-8 2006	2,604,074.83	1,579,772.68	17.42	3 INCH HUGHES & ASSOC. SBC
VH-9 2009	2,603,513.62	1,578,487.96	21.24	3 1/4 INCH TERRA SURVEYS SBC
WAREHOUSE 1965			25.52	4 INCH NOAA/NOS TIDAL BENCH MARK

NAVIGATION AIDS			
USCG NO.	NORTHING	EASTING	DESCRIPTION
25815	2,602,429	1,577,868	VALDEZ BOAT HARBOR LIGHT 2 RED
25820	2,602,641	1,577,601	VALDEZ BOAT HARBOR LIGHT 3 GREEN

PROJECT LIMITS			PROJECT LIMITS		
CORNER#	NORTHING	EASTING	CORNER#	NORTHING	EASTING
1	2,602,310.63	1,577,595.91	11	2,603,536.25	1,578,610.46
2	2,603,103.53	1,577,876.10	12	2,603,773.16	1,578,570.66
3	2,603,363.42	1,578,185.40	13	2,603,983.57	1,579,822.90
4	2,603,321.97	1,578,063.82	14	2,603,558.47	1,579,894.36
5	2,603,400.25	1,578,116.20	15	2,603,513.76	1,579,804.19
6	2,603,532.00	1,578,128.80	16	2,603,302.72	1,578,548.30
7	2,603,525.77	1,578,193.93	17	2,603,265.48	1,578,326.70
8	2,603,491.96	1,578,190.69	18	2,603,245.08	1,578,205.29
9	2,603,383.83	1,578,306.81	19	2,603,063.55	1,577,989.24
10	2,603,421.06	1,578,528.41	20	2,602,270.65	1,577,709.05



THIS HYDROGRAPHIC SURVEY WAS COMPLETED UNDER THE OVERSIGHT OF AN ACSM/THOSAA CERTIFIED HYDROGRAPHER

David R. Neff C.H. (275)

US Army Corps of Engineers
ALASKA DISTRICT

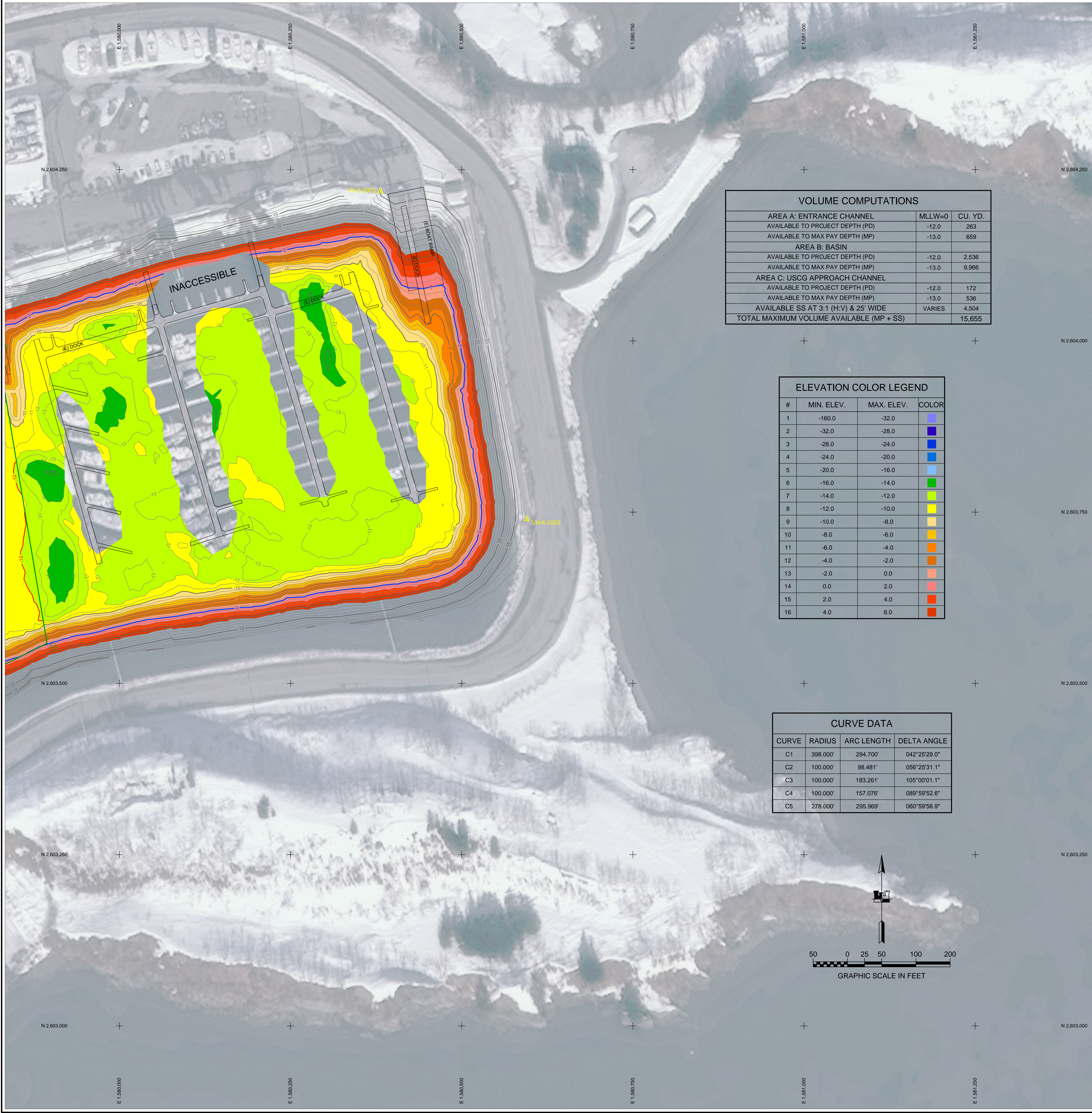
CONTRACT NO. W11H9-14-0003
CONTRACTOR: ETAC INC.
CITY: SAN RAFAEL
STATE: CALIFORNIA
DATE: 08/04/2015
APPROVED: MICHAEL E. JUEHLER
THOMAS A. SLON
CHIEF ENGINEER

DATE: 08-15-2015
CHECKED BY: J. J. JUEHLER
DESIGNED BY: J. J. JUEHLER
PROJECT NO.: W11H9-14-0003
JOB NO.: 1004
FILE NAME: 3-VAL-92-07-10
SCALE: AS SHOWN
SIZE: 11x17

U.S. ARMY CORPS OF ENGINEERS
ALASKA DISTRICT
JBER, ALASKA 99506-0988
ETAC INC.
637 LILAC AVE. #100
SAN RAFAEL, CA 94901

VALDEZ, ALASKA
VALDEZ HARBOR
PROJECT CONDITION SURVEY
JUNE 15-22, 2015

SHEET IDENTIFICATION
3-VAL-92-07-10
Sheet 7 of 8



VOLUME COMPUTATIONS		
AREA A: ENTRANCE CHANNEL	MLLW=0	CU. YD.
AVAILABLE TO PROJECT DEPTH (PD)	-12.0	263
AVAILABLE TO MAX PAY DEPTH (MP)	-13.0	659
AREA B: BASIN		
AVAILABLE TO PROJECT DEPTH (PD)	-12.0	2,536
AVAILABLE TO MAX PAY DEPTH (MP)	-13.0	9,966
AREA C: USCG APPROACH CHANNEL		
AVAILABLE TO PROJECT DEPTH (PD)	-12.0	172
AVAILABLE TO MAX PAY DEPTH (MP)	-13.0	536
AVAILABLE SS AT 3:1 (H:V) & 25' WIDE	VARIES	4,504
TOTAL MAXIMUM VOLUME AVAILABLE (MP + SS)		15,655

ELEVATION COLOR LEGEND			
#	MIN. ELEV.	MAX. ELEV.	COLOR
1	-160.0	-32.0	
2	-32.0	-28.0	
3	-28.0	-24.0	
4	-24.0	-20.0	
5	-20.0	-16.0	
6	-16.0	-14.0	
7	-14.0	-12.0	
8	-12.0	-10.0	
9	-10.0	-8.0	
10	-8.0	-6.0	
11	-6.0	-4.0	
12	-4.0	-2.0	
13	-2.0	0.0	
14	0.0	2.0	
15	2.0	4.0	
16	4.0	6.0	

CURVE DATA			
CURVE	RADIUS	ARC LENGTH	DELTA ANGLE
C1	398.000'	294.700'	042°25'29.0"
C2	100.000'	98.481'	056°25'31.1"
C3	100.000'	183.261'	105°00'01.1"
C4	100.000'	157.076'	089°59'52.6"
C5	278.000'	295.969'	060°59'56.9"



NOTES

- PRIMARY PROJECT HORIZONTAL CONTROL IS ALASKA STATE PLANE, ZONE 3, NAD83 IN US SURVEY FEET BASED ON A FULLY CONSTRAINED STATIC GPS NETWORK HOLDING THE PUBLISHED NAD83(CORS) 2003.00 EPOCH VALUES OF NGS CORS STATIONS: 'GLENALLEN CORS ARP' (GNAA - NGS PID AH2492) ; 'POTATO POINT 5 CORS ARP' (POTS - NGS PID DJ3043) AND 'ANCHORAGE AK DOT CORS ARP' (TBON - NGS PID DK4055) . LOCAL PROJECT HORIZONTAL CONTROL IS ALASKA STATE PLANE, ZONE 3, NAD83, IN US SURVEY FEET HOLDING "VH-4 2000" AS N 2,603,143.94' E 1,578,248.04'.
- VERTICAL CONTROL IS MEAN LOWER LOW WATER (MLLW=0.0), BASED ON THE NOAA/NOS TIDAL BENCH MARK LIST: '945 4240, VALDEZ, PRINCE WILLIAM SOUND, ALASKA, PUBLISHED 08/30/2011'. THIS TIDAL DATUM IS BASED ON THE 1983-2001 TIDAL EPOCH AND IS REFERENCED BY HOLDING NOAA/NOS TIDAL BENCH MARK '4240 L 1978' (VM11257) AS 34.30'.
- VERTICAL TIES TO THE NATIONAL SPATIAL REFERENCE SYSTEM ARE BASED ON PUBLISHED NAVD88 ELEVATIONS HOLDING 3.25" STAMPED BRASS CAP, "VH-4 2000" (NGS PID BBDW96), AS 20.60'.
- SOUNDINGS ARE IN FEET AND ARE MINUS UNLESS OTHERWISE INDICATED.
- WAS COLLECTED JUNE 19-21, 2015. SOUNDINGS WERE COLLECTED USING AN R2SONIC 2022 MULTIBEAM ECHOSOUNDER OPERATING AT 200 KHZ. SOUND VELOCITY, THROUGH THE WATER COLUMN WAS DETERMINED WITH AN AML BASE X SOUND VELOCITY PROBE. POSITION AND VESSEL ORIENTATION WERE MEASURED USING AN APPLANIX POSMV 320 V4 SYSTEM. DATA WAS COLLECTED AND PROCESSED USING QINSY 8.1 SOFTWARE. HORIZONTAL CONTROL WAS SURVEYED USING STATIC AND RTK GNSS EQUIPMENT AND TECHNIQUES. VERTICAL CONTROL WAS SURVEYED USING DIFFERENTIAL LEVELING TECHNIQUES.
- THIS DRAWING INDICATES GENERAL CONDITIONS AT THE TIME OF THE SURVEY.
- MAP SOUNDINGS ARE BINNED AT 24 FEET AND ARE SHOAL-BIASED. CONTOURS ARE BASED ON 12 FEET BINNED SHOAL-BIASED SOUNDINGS. VOLUME SOUNDINGS ARE BINNED AT 3 FEET AND ARE MEAN VALUE SOUNDINGS.

SURVEY CONTROL DATA

STATION	NORTHING	EASTING	MLLW	DESCRIPTION
4240 L 1978	2,603,915.9	1,577,794.0	34.30	3 1/2 INCH NOAA/NOS TIDAL BENCH MARK
BM 98 1964	2,608,238.5	1,584,077.4	16.98	NGS NAVD 88 BENCH MARK
BREAK 1965	2,602,778.67	1,578,004.17	17.75	3 1/2 INCH USACE DBC
NO 21 1966	2,603,536.2	1,577,411.0	20.57	3 1/2 INCH NOAA/NOS TIDAL BENCH MARK
TMP-1 1982	2,603,279.85	1,579,007.85	23.16	3 1/2 INCH USACE DBC
VH-1 1997	2,603,041.94	1,577,733.46	17.77	3 1/4 INCH TERRA SURVEYS SBC
VH-2 1997	2,603,735.41	1,578,538.01	20.51	3 1/4 INCH TERRA SURVEYS SBC
VH-3 2000	2,603,371.17	1,579,485.89	21.26	3 1/4 INCH TERRA SURVEYS SBC
VH-4 2000	2,603,143.94	1,578,248.04	21.90	3 1/4 INCH TERRA SURVEYS SBC
VH-5 2003	2,604,218.42	1,580,381.26	16.79	3 1/4 INCH TERRA SURVEYS SBC
VH-6 2003	2,603,739.93	1,580,595.12	17.59	3 1/4 INCH TERRA SURVEYS SBC
VH-7 2006	2,603,960.18	1,579,020.58	21.24	3 INCH HUGHES & ASSOC. SBC
VH-8 2006	2,604,074.83	1,579,772.68	17.42	3 INCH HUGHES & ASSOC. SBC
VH-9 2009	2,603,513.62	1,578,487.96	21.24	3 1/4 INCH TERRA SURVEYS SBC
WAREHOUSE 1965			25.52	4 INCH NOAA/NOS TIDAL BENCH MARK

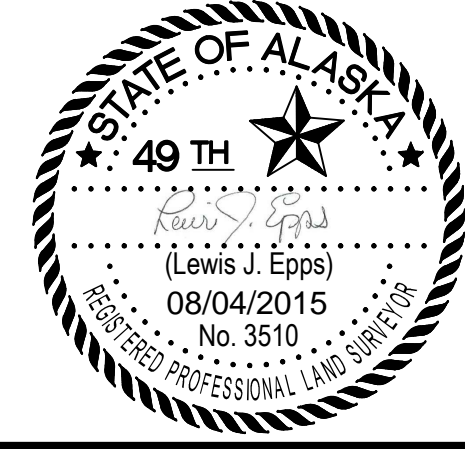
NAVIGATION AIDS

USCG NO.	NORTHING	EASTING	DESCRIPTION
25815	2,602,429	1,577,868	VALDEZ BOAT HARBOR LIGHT 2 RED
25820	2,602,641	1,577,601	VALDEZ BOAT HARBOR LIGHT 3 GREEN

PROJECT LIMITS

CORNER#	NORTHING	EASTING
1	2,602,310.63	1,577,595.91
2	2,603,103.53	1,577,876.10
3	2,603,363.42	1,578,185.40
4	2,603,321.97	1,578,063.82
5	2,603,400.25	1,578,116.20
6	2,603,532.00	1,578,128.80
7	2,603,525.77	1,578,193.93
8	2,603,491.96	1,578,190.69
9	2,603,383.83	1,578,306.81
10	2,603,421.06	1,578,528.41

CORNER#	NORTHING	EASTING
11	2,603,536.25	1,578,610.46
12	2,603,773.16	1,578,570.66
13	2,603,983.57	1,579,822.90
14	2,603,558.47	1,579,894.36
15	2,603,513.76	1,579,804.19
16	2,603,302.72	1,578,548.30
17	2,603,265.48	1,578,326.70
18	2,603,245.08	1,578,205.29
19	2,603,063.55	1,577,989.24
20	2,602,270.65	1,577,709.05



THIS HYDROGRAPHIC SURVEY WAS COMPLETED UNDER THE OVERSIGHT OF AN ACSM/THOSAA CERTIFIED HYDROGRAPHER

David R. Neff C.H. (275)

US Army Corps of Engineers of Engineers of ALASKA DISTRICT

CONTRACT NO. W11H8-14-0013
CONTRACTOR: ETAC INC.
CITY: SAN RAFAEL
STATE: CALIFORNIA
APPROVED: THOMAS A. SLON
DATE: 08/04/2015
RECOMMENDED: MICHAEL E. MUELLER
DATE: 08/04/2015
BY: [Signature]
DATE: [Date]

DATE: 06-15-2015
CHECKED BY: [Signature]
DRAWN BY: [Signature]
SCALE: 1"=400'
FILE NAME: 3-VAL-92-07-10
FILE SIZE: 1,000,000
FILE TYPE: PDF

U.S. ARMY CORPS OF ENGINEERS
ALASKA DISTRICT
JBER, ALASKA 99506-0988
ETAC INC.
637 L. J. BLVD.
SAN RAFAEL, CA 94901

VALDEZ, ALASKA
VALDEZ HARBOR
PROJECT CONDITION SURVEY
JUNE 15-22, 2015

SHEET IDENTIFICATION
3-VAL-92-07-10
Sheet 8 of 8