

**APPROVED JURISDICTIONAL DETERMINATION FORM**  
**U.S. Army Corps of Engineers**

This form should be completed by following the instructions provided in Section IV of the JD Form Instructional Guidebook.

**SECTION I: BACKGROUND INFORMATION**

**A. REPORT COMPLETION DATE FOR APPROVED JURISDICTIONAL DETERMINATION (JD):** 8/19/2016

**B. DISTRICT OFFICE, FILE NAME, AND NUMBER:** Alaska District, POA-2001-155

**C. PROJECT LOCATION AND BACKGROUND INFORMATION:**

State: Alaska                      Borough: Juneau                      City: Juneau  
Center coordinates of site (lat/long in degree decimal format): Lat. 58.4419° N., Long. 134.7669°W.  
Universal Transverse Mercator: NAD83  
Name of nearest waterbody: North Tee Creek  
Name of nearest Traditional Navigable Water (TNW) into which the aquatic resource flows: Tee Harbor  
Name of watershed or Hydrologic Unit Code (HUC): North Tee Creek

Check if map/diagram of review area and/or potential jurisdictional areas is/are available upon request.

Check if other sites (e.g., offsite mitigation sites, disposal sites, etc...) are associated with this action and are recorded on a different JD form

**D. REVIEW PERFORMED FOR SITE EVALUATION (CHECK ALL THAT APPLY):**

Office (Desk) Determination.                      Date: 8/19/2016

Field Determination.                      Date(s): 8/15/2016

**SECTION II: SUMMARY OF FINDINGS**

**A. RHA SECTION 10 DETERMINATION OF JURISDICTION.**

There: are no "*navigable waters of the U.S.*" within Rivers and Harbors Act (RHA) jurisdiction (as defined by 33 CFR part 329) in the review area.

- Waters subject to the ebb and flow of the tide.
- Waters are presently used, or have been used in the past, or may be susceptible for use to transport interstate or foreign commerce. Explain:

**B. CWA SECTION 404 DETERMINATION OF JURISDICTION.**

There: are "*waters of the U.S.*" within Clean Water Act (CWA) jurisdiction (as defined by 33 CFR part 328) in the review area.

**1. Waters of the U.S.**

**a. Indicate presence of waters of U.S. in review area (check all that apply):<sup>1</sup>**

- TNWs, including territorial seas
- Wetlands adjacent to TNWs
- Relatively permanent waters<sup>2</sup> (RPWs) that flow directly or indirectly into TNWs
- Non-RPWs that flow directly or indirectly into TNWs
- Wetlands directly abutting RPWs that flow directly or indirectly into TNWs
- Wetlands adjacent to but not directly abutting RPWs that flow directly or indirectly into TNWs
- Wetlands adjacent to non-RPWs that flow directly or indirectly into TNWs
- Impoundments of jurisdictional waters
- Isolated (interstate or intrastate) waters, including isolated wetlands

**b. Identify (estimate) size of waters of the U.S. in the review area:**

---

<sup>1</sup> Boxes checked below shall be supported by completing the appropriate sections in Section III below.

<sup>2</sup> For purposes of this form an RPW is defined as a tributary that is not a TNW and that typically flows year-round or has continuous flow at least "seasonally" (e.g., typically 3 months).

Non-wetland waters: 215 linear feet.

Wetlands: 0.93 acres.

- c. **Limits (boundaries) of jurisdiction based on:** 1987 Delineation Manual and ordinary high water mark.  
Elevation of established OHWM (if known): N/A

**2. Non-regulated waters/wetlands (check if applicable):<sup>3</sup>**

Potentially jurisdictional waters and/or wetlands were assessed within the review area and determined to be not jurisdictional.

Explain: The property contains previously authorized fill and a portion of the tract does not meet the three parameter criteria for wetlands.

**SECTION III: CWA ANALYSIS**

**A. TNWs AND WETLANDS ADJACENT TO TNWs**

The agencies will assert jurisdiction over TNWs and wetlands adjacent to TNWs. If the aquatic resource is a TNW, complete Section III.A.1 and Section III.D.1. only; if the aquatic resource is a wetland adjacent to a TNW, complete Sections III.A.1 and 2 and Section III.D.1.; otherwise, see Section III.B below.

**1. TNW**

Identify TNW:

Summarize rationale supporting determination:

**2. Wetland adjacent to TNW**

Summarize rationale supporting conclusion that wetland is “adjacent”:

**B. CHARACTERISTICS OF TRIBUTARY (THAT IS NOT A TNW) AND ITS ADJACENT WETLANDS (IF ANY):**

This section summarizes information regarding characteristics of the tributary and its adjacent wetlands, if any, and it helps determine whether or not the standards for jurisdiction established under *Rapanos* have been met.

The agencies will assert jurisdiction over non-navigable tributaries of TNWs where the tributaries are “relatively permanent waters” (RPWs), i.e. tributaries that typically flow year-round or have continuous flow at least seasonally (e.g., typically 3 months). A wetland that directly abuts an RPW is also jurisdictional. If the aquatic resource is not a TNW, but has year-round (perennial) flow, skip to Section III.D.2. If the aquatic resource is a wetland directly abutting a tributary with perennial flow, skip to Section III.D.4.

A wetland that is adjacent to but that does not directly abut an RPW requires a significant nexus evaluation. Corps districts and EPA regions will include in the record any available information that documents the existence of a significant nexus between a relatively permanent tributary that is not perennial (and its adjacent wetlands if any) and a traditional navigable water, even though a significant nexus finding is not required as a matter of law.

If the waterbody<sup>4</sup> is not an RPW, or a wetland directly abutting an RPW, a JD will require additional data to determine if the waterbody has a significant nexus with a TNW. If the tributary has adjacent wetlands, the significant nexus evaluation must consider the tributary in combination with all of its adjacent wetlands. This significant nexus evaluation that combines, for analytical purposes, the tributary and all of its adjacent wetlands is used whether the review area identified in the JD request is the tributary, or its adjacent wetlands, or both. If the JD covers a tributary with adjacent wetlands, complete Section III.B.1 for the tributary, Section III.B.2 for any onsite wetlands, and Section III.B.3 for all wetlands adjacent to that tributary, both onsite and offsite. The determination whether a significant nexus exists is determined in Section III.C below.

**1. Characteristics of non-TNWs that flow directly or indirectly into TNW**

**(i) General Area Conditions:**

---

<sup>3</sup> Supporting documentation is presented in Section III F.

<sup>4</sup> Note that the Instructional Guidebook contains additional information regarding swales, ditches, washes, and erosional features generally and in the arid West.

Watershed size: 175 acres

Drainage area: 17 acres

Average annual rainfall: 62.27 inches

Average annual snowfall: 87.4 inches

(ii) **Physical Characteristics:**

(a) Relationship with TNW:

- Tributary flows directly into TNW.  
 Tributary flows through tributaries before entering TNW.

Project waters are 1 river miles from TNW.

Project waters are 0 river miles from RPW.

Project waters are 0.7 aerial (straight) miles from TNW.

Project waters are 0 aerial (straight) miles from RPW.

Project waters cross or serve as state boundaries. Explain: N/A

Identify flow route to TNW<sup>5</sup>: Tee originates just north of Cohen Drive within the vicinity of the review area. The creek flows south within a well incised valley and enters salt water on the north bight of Tee Harbor.

Tributary stream order, if known: 3 or 4

(b) General Tributary Characteristics (check all that apply):

- Tributary is:**  Natural  
 Artificial (man-made). Explain:  
 Manipulated (man-altered). Explain:

**Tributary properties with respect to top of bank (estimate):**

Average width: 2 -4 feet

Average depth: 1 feet

Average side slopes: 2:1.

**Primary tributary substrate composition (check all that apply):**

- Silts       Sands       Concrete  
 Cobbles       Gravel       Muck  
 Bedrock       Vegetation. Type/% cover:  
 Other. Explain:

Tributary condition/stability [e.g., highly eroding, sloughing banks]. Explain: In its lower reaches, the stream has many pools with excellent overhead and instream cover. Upstream from Cohen Drive, the stream canopy is more open, with overhanging grass and many undercut banks.

Presence of run/riffle/pool complexes. Explain: Yes, see above.

Tributary geometry: Meandering

Tributary gradient (approximate average slope): 2 - 3% moderate throughout its length.

(c) Flow:

Tributary provides for: Perennial

Estimate average number of flow events in review area/year: 20 (or greater)

Describe flow regime: 150 cubic feet per second 75% of the time.

Other information on duration and volume:

Surface flow is: Confined Characteristics:

Subsurface flow: Yes Explain findings: With few exception stream in Southeast Alaska are associated with subsurface flow, the streambed strata composition (i.e. sand, gravel, cobble) and surrounding wetland soil (mucky peat) allows for subsurface water movement until reaching glacial till.

---

<sup>5</sup> Flow route can be described by identifying, e.g., tributary a, which flows through the review area, to flow into tributary b, which then flows into TNW.

Dye (or other) test performed:

Tributary has (check all that apply):

Bed and banks

OHWM<sup>6</sup> (check all indicators that apply):

clear, natural line impressed on the bank

the presence of litter and debris

changes in the character of soil

destruction of terrestrial vegetation

shelving

the presence of wrack line

vegetation matted down, bent, or absent

sediment sorting

leaf litter disturbed or washed away

scour

sediment deposition

multiple observed or predicted flow events

water staining

abrupt change in plant community

other (list):

Discontinuous OHWM.<sup>7</sup> Explain:

If factors other than the OHWM were used to determine lateral extent of CWA jurisdiction (check all that apply):

High Tide Line indicated by:

Mean High Water Mark indicated by:

oil or scum line along shore objects

survey to available datum;

fine shell or debris deposits (foreshore)

physical markings;

physical markings/characteristics

vegetation lines/changes in vegetation types.

tidal gauges

other (list):

**(iii) Chemical Characteristics:**

Characterize tributary (e.g., water color is clear, discolored, oily film; water quality; general watershed characteristics, etc.). Explain: The water is clear, with a brownish tint.

Identify specific pollutants, if known: Sediment from residential construction and potential sewage from failing on-site water treatment facilities.

**(iv) Biological Characteristics. Channel supports (check all that apply):**

Riparian corridor. Characteristics (type, average width): >100 feet

Wetland fringe. Characteristics: Palustrine forested >100 feet

Habitat for:

Federally Listed species. Explain findings:

Fish/spawn areas. Explain findings: Historically good spawning habitat is found throughout North Tee Creek. Pink and chum salmon spawn from the intertidal area upstream to just below Cohen Drive. Coho salmon spawn from the intertidal area to above Cohen Drive. The creek has populations of Dolly Varden and cutthroat trout. The stream has not been stocked.

Other environmentally-sensitive species. Explain findings:

Aquatic/wildlife diversity. Explain findings:

**2. Characteristics of wetlands adjacent to non-TNW that flow directly or indirectly into TNW**

**(i) Physical Characteristics:**

(a) General Wetland Characteristics:

Properties:

Wetland size: 0.93 acres

Wetland type. Explain: Palustrine forested

Wetland quality. Explain: Functional rating is high to medium.

<sup>6</sup> A natural or man-made discontinuity in the OHWM does not necessarily sever jurisdiction (e.g., where the stream temporarily flows underground, or where the OHWM has been removed by development or agricultural practices). Where there is a break in the OHWM that is unrelated to the waterbody's flow regime (e.g., flow over a rock outcrop or through a culvert), the agencies will look for indicators of flow above and below the break.

<sup>7</sup> Ibid.

Project wetlands cross or serve as state boundaries. Explain: No.

(b) General Flow Relationship with Non-TNW:

Flow is: Choose an item. Explain: Perennial

Surface flow is: Confined/Overland Sheetflow

Characteristics:

Subsurface flow: Yes Explain findings: Wetlands in Southeast Alaska with few exceptions are groundwater driven. The site is subject to perennial inundation and groundwater discharge into and off the project area does take place. However, the presence of a wetland soil with an impervious underlying stratum (glacial till) indicates that ground water infiltration rates would be slow and appreciable ground water movement off-site would not occur.

Dye (or other) test performed:

(c) Wetland Adjacency Determination with Non-TNW:

Directly abutting

Not directly abutting

Discrete wetland hydrologic connection.

Ecological connection. Explain: Fish habitat

Separated by berm/barrier.

(d) Proximity (Relationship) to TNW

Project wetlands are 1 river miles from TNW.

Project waters are 0.7 aerial (straight) miles from TNW.

Flow is from: Wetland to Navigable Water

Estimate approximate location of wetland as within the 100-year floodplain.

**(ii) Chemical Characteristics:**

Characterize wetland system (e.g., water color is clear, brown, oil film on surface; water quality; general watershed characteristics; etc.). Explain: The water is clear, with a brownish tint.

Identify specific pollutants, if known: Sediment from residential construction and potential sewage from failing on-site water treatment facilities.

**(iii) Biological Characteristics. Wetland supports (check all that apply):**

Riparian buffer. Characteristics (type, average width): >100 feet

Vegetation type/percent cover. Explain: Western Hemlock/blueberry forest 100%

Habitat for:

Federally Listed species. Explain findings:

Fish/spawn areas. Explain findings: See III.1.(iv) above

Other environmentally-sensitive species. Explain findings:

Aquatic/wildlife diversity. Explain findings:

**3. Characteristics of all wetlands adjacent to the tributary (if any)**

All wetland(s) being considered in the cumulative analysis: 1

Approximately 0.93 acres in total are being considered in the cumulative analysis.

For each wetland, specify the following:

Directly abuts? (Y/N)	Size (in acres)
Y	0.93

Summarize overall biological, chemical and physical functions being performed: this wetland performs the following functions: Groundwater Discharge, Surface Hydrologic Control, Sediment/Toxicant Retention, Nutrient Export, Riparian Support, Salmonid Habitat, Wildlife Habitat, Sediment/shoreline Stabilization.

**C. SIGNIFICANT NEXUS DETERMINATION**

A significant nexus analysis will assess the flow characteristics and functions of the tributary itself and the functions performed by any wetlands adjacent to the tributary to determine if they significantly affect the chemical, physical, and biological integrity of a TNW. For each of the following situations, a significant nexus exists if the tributary, in combination with all of its adjacent wetlands, has more than a speculative or insubstantial effect on the chemical, physical and/or biological integrity of a TNW. Considerations when evaluating significant nexus include, but are not limited to the volume, duration, and frequency of the flow of water in the tributary and its proximity to a TNW, and the functions performed by the tributary and all its adjacent wetlands. It is not appropriate to determine significant nexus based solely on any specific threshold of distance (e.g. between a tributary and its adjacent wetland or between a tributary and the TNW). Similarly, the fact an adjacent wetland lies within or outside of a floodplain is not solely determinative of significant nexus.

**Draw connections between the features documented and the effects on the TNW, as identified in the Rapanos Guidance and discussed in the Instructional Guidebook. Factors to consider include, for example:**

- Does the tributary, in combination with its adjacent wetlands (if any), have the capacity to carry pollutants or flood waters to TNWs, or to reduce the amount of pollutants or flood waters reaching a TNW?
- Does the tributary, in combination with its adjacent wetlands (if any), provide habitat and lifecycle support functions for fish and other species, such as feeding, nesting, spawning, or rearing young for species that are present in the TNW?
- Does the tributary, in combination with its adjacent wetlands (if any), have the capacity to transfer nutrients and organic carbon that support downstream foodwebs?
- Does the tributary, in combination with its adjacent wetlands (if any), have other relationships to the physical, chemical, or biological integrity of the TNW?

*Note: the above list of considerations is not inclusive and other functions observed or known to occur should be documented below:*

1. **Significant nexus findings for non-RPW that has no adjacent wetlands and flows directly or indirectly into TNWs.** Explain findings of presence or absence of significant nexus below, based on the tributary itself, then go to Section III.D:
2. **Significant nexus findings for non-RPW and its adjacent wetlands, where the non-RPW flows directly or indirectly into TNWs.** Explain findings of presence or absence of significant nexus below, based on the tributary in combination with all of its adjacent wetlands, then go to Section III.D:
3. **Significant nexus findings for wetlands adjacent to an RPW but that do not directly abut the RPW.** Explain findings of presence or absence of significant nexus below, based on the tributary in combination with all of its adjacent wetlands, then go to Section III.D:

**D. DETERMINATIONS OF JURISDICTIONAL FINDINGS. THE SUBJECT WATERS/WETLANDS ARE (CHECK ALL THAT APPLY):**

1. **TNWs and Adjacent Wetlands.** Check all that apply and provide size estimates in review area:

- TNWs: linear feet width (ft), Or, acres.
- Wetlands adjacent to TNWs: acres.

2. **RPWs that flow directly or indirectly into TNWs.**

Tributaries of TNWs where tributaries typically flow year-round are jurisdictional. Provide data and rationale indicating that tributary is perennial: See Section III.B.1. Also, North Tee Creek is listed in the Alaska Department of Fish and Game as an anadromous fish stream for spawning and rearing.

Tributaries of TNW where tributaries have continuous flow “seasonally” (e.g., typically three months each year) are jurisdictional. Data supporting this conclusion is provided at Section III.B. Provide rationale indicating that tributary flows seasonally:

Provide estimates for jurisdictional waters in the review area (check all that apply):

- Tributary waters: linear feet width (ft).
- Other non-wetland waters: acres.

Identify type(s) of waters:

**3. Non-RPWs<sup>8</sup> that flow directly or indirectly into TNWs.**

Waterbody that is not a TNW or an RPW, but flows directly or indirectly into a TNW, and it has a significant nexus with a TNW is jurisdictional. Data supporting this conclusion is provided at Section III.C.

Provide estimates for jurisdictional waters within the review area (check all that apply):

Tributary waters: linear feet width (ft).

Other non-wetland waters: acres.

Identify type(s) of waters:

**4. Wetlands directly abutting an RPW that flow directly or indirectly into TNWs.**

Wetlands directly abut RPW and thus are jurisdictional as adjacent wetlands.

Wetlands directly abutting an RPW where tributaries typically flow year-round. Provide data and rationale indicating that tributary is perennial in Section III.D.2, above. Provide rationale indicating that wetland is directly abutting an RPW: The wetland adjoins the stream.

Wetlands directly abutting an RPW where tributaries typically flow “seasonally.” Provide data indicating that tributary is seasonal in Section III.B and rationale in Section III.D.2, above. Provide rationale indicating that wetland is directly abutting an RPW:

Provide acreage estimates for jurisdictional wetlands in the review area: acres.

**5. Wetlands adjacent to but not directly abutting an RPW that flow directly or indirectly into TNWs.**

Wetlands that do not directly abut an RPW, but when considered in combination with the tributary to which they are adjacent and with similarly situated adjacent wetlands, have a significant nexus with a TNW are jurisdictional. Data supporting this conclusion is provided at Section III.C.

Provide acreage estimates for jurisdictional wetlands in the review area: acres.

**6. Wetlands adjacent to non-RPWs that flow directly or indirectly into TNWs.**

Wetlands adjacent to such waters, and have when considered in combination with the tributary to which they are adjacent and with similarly situated adjacent wetlands, have a significant nexus with a TNW are jurisdictional. Data supporting this conclusion is provided at Section III.C.

Provide estimates for jurisdictional wetlands in the review area: acres.

**7. Impoundments of jurisdictional waters.<sup>9</sup>**

As a general rule, the impoundment of a jurisdictional tributary remains jurisdictional.

Demonstrate that impoundment was created from “waters of the U.S.,” or

Demonstrate that water meets the criteria for one of the categories presented above (1-6), or

Demonstrate that water is isolated with a nexus to commerce (see E below).

**E. ISOLATED [INTERSTATE OR INTRA-STATE] WATERS, INCLUDING ISOLATED WETLANDS, THE USE, DEGRADATION OR DESTRUCTION OF WHICH COULD AFFECT INTERSTATE COMMERCE, INCLUDING ANY SUCH WATERS (CHECK ALL THAT APPLY):<sup>10</sup>**

which are or could be used by interstate or foreign travelers for recreational or other purposes.

from which fish or shellfish are or could be taken and sold in interstate or foreign commerce.

which are or could be used for industrial purposes by industries in interstate commerce.

Interstate isolated waters. Explain:

Other factors. Explain:

---

<sup>8</sup> See Footnote #3.

<sup>9</sup> To complete the analysis refer to the key in Section III D.6 of the Instructional Guidebook.

<sup>10</sup> Prior to asserting or declining CWA jurisdiction based solely on this category, Corps Districts will elevate the action to Corps and EPA HQ for review consistent with the process described in the Corps/EPA *Memorandum Regarding CWA Jurisdiction Following Rapanos*.

**Identify water body and summarize rationale supporting determination:**

Provide estimates for jurisdictional waters in the review area (check all that apply):

- Tributary waters: linear feet width (ft).
- Other non-wetland waters: acres.  
Identify type(s) of waters:
- Wetlands: acres.

**F. NON-JURISDICTIONAL WATERS, INCLUDING WETLANDS (CHECK ALL THAT APPLY):**

If potential wetlands were assessed within the review area, these areas did not meet the criteria in the 1987 Corps of Engineers Wetland Delineation Manual and/or appropriate Regional Supplements. There are 0.25 acres of the property that are not subject to Corps of Engineers regulatory authority. These areas are uplands and previously authorized existing fill.

- Review area included isolated waters with no substantial nexus to interstate (or foreign) commerce.
  - Prior to the Jan 2001 Supreme Court decision in "SWANCC," the review area would have been regulated based solely on the "Migratory Bird Rule" (MBR).
- Waters do not meet the "Significant Nexus" standard, where such a finding is required for jurisdiction. Explain:
- Other: (explain, if not covered above):

Provide acreage estimates for non-jurisdictional waters in the review area, where the sole potential basis of jurisdiction is the MBR factors (i.e., presence of migratory birds, presence of endangered species, use of water for irrigated agriculture), using best professional judgment (check all that apply):

- Non-wetland waters (i.e., rivers, streams): linear feet width (ft).
- Lakes/ponds: acres.
- Other non-wetland waters: acres. List type of aquatic resource:
- Wetlands: acres.

Provide acreage estimates for non-jurisdictional waters in the review area that do not meet the "Significant Nexus" standard, where such a finding is required for jurisdiction (check all that apply):

- Non-wetland waters (i.e., rivers, streams): linear feet width (ft).
- Lakes/ponds: acres.
- Other non-wetland waters: acres. List type of aquatic resource:
- Wetlands: acres.

**SECTION IV: DATA SOURCES.**

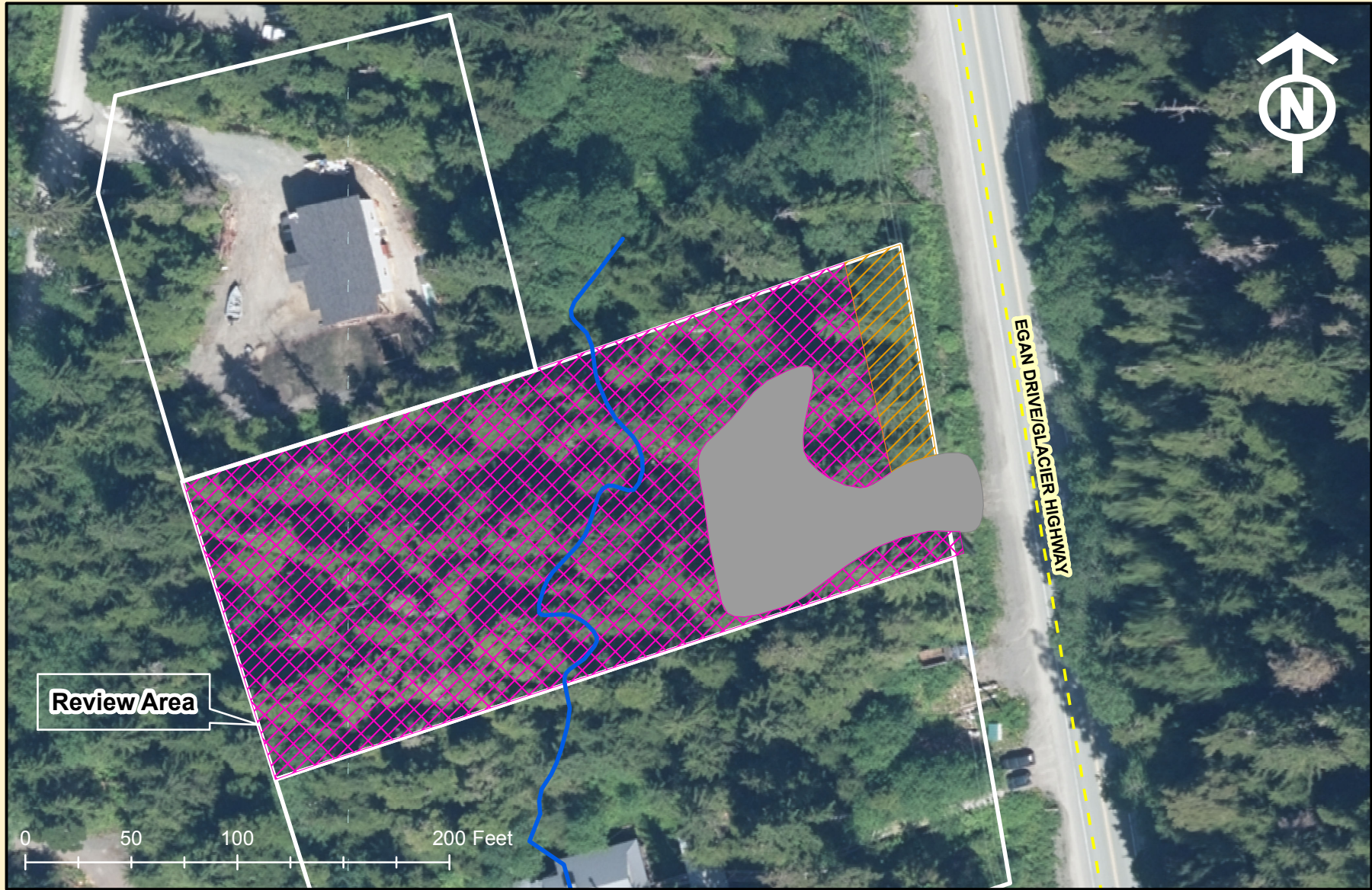
**A. SUPPORTING DATA. Data reviewed for JD (check all that apply - checked items shall be included in case file and, where checked and requested, appropriately reference sources below):**

- Maps, plans, plots or plat submitted by or on behalf of the applicant/consultant: Jackson Residential Development
- Data sheets prepared/submitted by or on behalf of the applicant/consultant.
  - Office concurs with data sheets/delineation report.
  - Office does not concur with data sheets/delineation report.
- Data sheets prepared by the Corps: Field inspection August 15, 2016
- Corps navigable waters' study:
- U.S. Geological Survey Hydrologic Atlas:
  - USGS NHD data.
  - USGS 8 and 12 digit HUC maps.
- Alaska District's Approved List of Navigable Waters
- U.S. Geological Survey map(s). Cite scale & quad name:
- USDA Natural Resources Conservation Service Soil Survey. Citation:
- National wetlands inventory map(s). Cite name: Juneau B-2
- State/Local wetland inventory map(s):
- FEMA/FIRM maps:



- 100-year Floodplain Elevation is: (National Geodetic Vertical Datum of 1929)
- Photographs:  Aerial (Name & Date): City & Borough of Juneau, 6/2013  
or  Other (Name & Date): USACE ground photography 8/15/2016
- Previous determination(s). File no. and date of response letter:
- Applicable/supporting case law:
- Applicable/supporting scientific literature:
- Other information (please specify):

**B. ADDITIONAL COMMENTS TO SUPPORT JD:**



# Delineation Waters of the United States

POA-2001-155, Tee Harbor  
 Gerald P. Jackson  
 Residential Development  
 8/18/2016

- Stream
- Wetlands
- Uplands
- Existing Fill