

**DRY LAND APPROVED JURISDICTIONAL DETERMINATION FORM<sup>1</sup>**  
**U.S. Army Corps of Engineers**

This form should be completed by following the instructions provided in Section IV of the JD Form Instructional Guidebook.

**SECTION I: BACKGROUND INFORMATION**

**A. REPORT COMPLETION DATE FOR APPROVED JURISDICTIONAL DETERMINATION (JD): August 6, 2013**

**B. DISTRICT OFFICE, FILE NAME, AND NUMBER: POA-2006-442 Tanana River**

**C. PROJECT LOCATION AND BACKGROUND INFORMATION:**

State: Alaska County/parish/borough: Fairbanks North Star Borough City: Fairbanks  
Center coordinates of site (lat/long in degree decimal format): Lat. 64.79535 °, Long. -147.7374 °  
Universal Transverse Mercator: 06W 464972 7185853

Name of nearest waterbody: Tanana River

Name of watershed or Hydrologic Unit Code (HUC): 19080307 Middle Tanana

- Check if map/diagram of review area is available upon request.
- Check if other sites (e.g., offsite mitigation sites, disposal sites, etc...) are associated with this action and are recorded on a different JD form.

**D. REVIEW PERFORMED FOR SITE EVALUATION (CHECK ALL THAT APPLY):**

- Office (Desk) Determination. Date: August 2, 2013
- Field Determination. Date(s):

**SECTION II: SUMMARY OF FINDINGS**

**A. RHA SECTION 10 DETERMINATION OF JURISDICTION.**

There are **no** "navigable waters of the U.S." within Rivers and Harbors Act (RHA) jurisdiction (as defined by 33 CFR part 329) in the review area.

**B. CWA SECTION 404 DETERMINATION OF JURISDICTION.**

There are **no** "waters of the U.S." within Clean Water Act (CWA) jurisdiction (as defined by 33 CFR part 328) in the review area.

**SECTION III: DATA SOURCES.**

**A. SUPPORTING DATA. Data reviewed for JD (check all that apply - checked items shall be included in case file and, where checked and requested, appropriately reference sources below):**

- Maps, plans, plots or plat submitted by or on behalf of the applicant/consultant: Fairbanks North Star Borough Parks and Recreation 'No Permit Required' Application dated June 2, 2018. Included a map of the area showing aerial imagery and a description of the vegetation.
- Data sheets prepared/submitted by or on behalf of the applicant/consultant.
- Office concurs with data sheets/delineation report.
- Office does not concur with data sheets/delineation report.
- Data sheets prepared by the Corps: Permit issuance and original JD, POA-2006-442 Tanana River September 6, 2006
- U.S. Geological Survey Hydrologic Atlas:
- USGS NHD data. NHD Flowline, accessed online (NHD 2017)
- USGS 8 and 12 digit HUC maps. 19080307 Middle Tanana
- U.S. Geological Survey map(s). Cite scale & quad name: Fairbanks D-2, 1:63,300 USGS (1954, photo revised in 1972, 1973, minor revisions in 1994)
- USDA Natural Resources Conservation Service Soil Survey. Citation: Soil Survey of Greater Fairbanks Area (2004)
- National wetlands inventory map(s). Cite name: HU8\_19080307 accessed online (USFWS 8/2017)
- State/Local wetland inventory map(s):
- FEMA/FIRM maps: Accessed online database (FEMA 07/2018)
- 100-year Floodplain Elevation is: (National Geodetic Vertical Datum of 1929)
- Photographs:  Aerial (Name & Date): ESRI Basemap (accessed online 08/18), Pictometry\_2012\_1meter\_Mosaic\_Partial.ecw (FNSB 2012), Google Earth Pro imagery from 1996, 2006, 2012, 2015 and 2017.
- or  Other (Name & Date): Hillshade\_2010\_LiDAR\_DEM.img
- Previous determination(s). File no. and date of response letter: POA-2006-442 Tanana River
- Applicable/supporting case law:
- Applicable/supporting scientific literature:
- Other information (please specify): Permit verification and Approved Jurisdictional Determination, ORM number POA-2006-442 (Sharon Siem, USACE, 2006)

**B. REQUIRED ADDITIONAL COMMENTS TO SUPPORT JD. EXPLAIN RATIONALE FOR DETERMINATION THAT THE REVIEW AREA ONLY INCLUDES DRY LAND:** This JD is GEOGRAPHICALLY LIMITED to the small arm of land beginning at approximately -147.738250 64.795356 and ending at -147.735658 64.795589. It is an average of 25 feet in width over its almost 100 foot

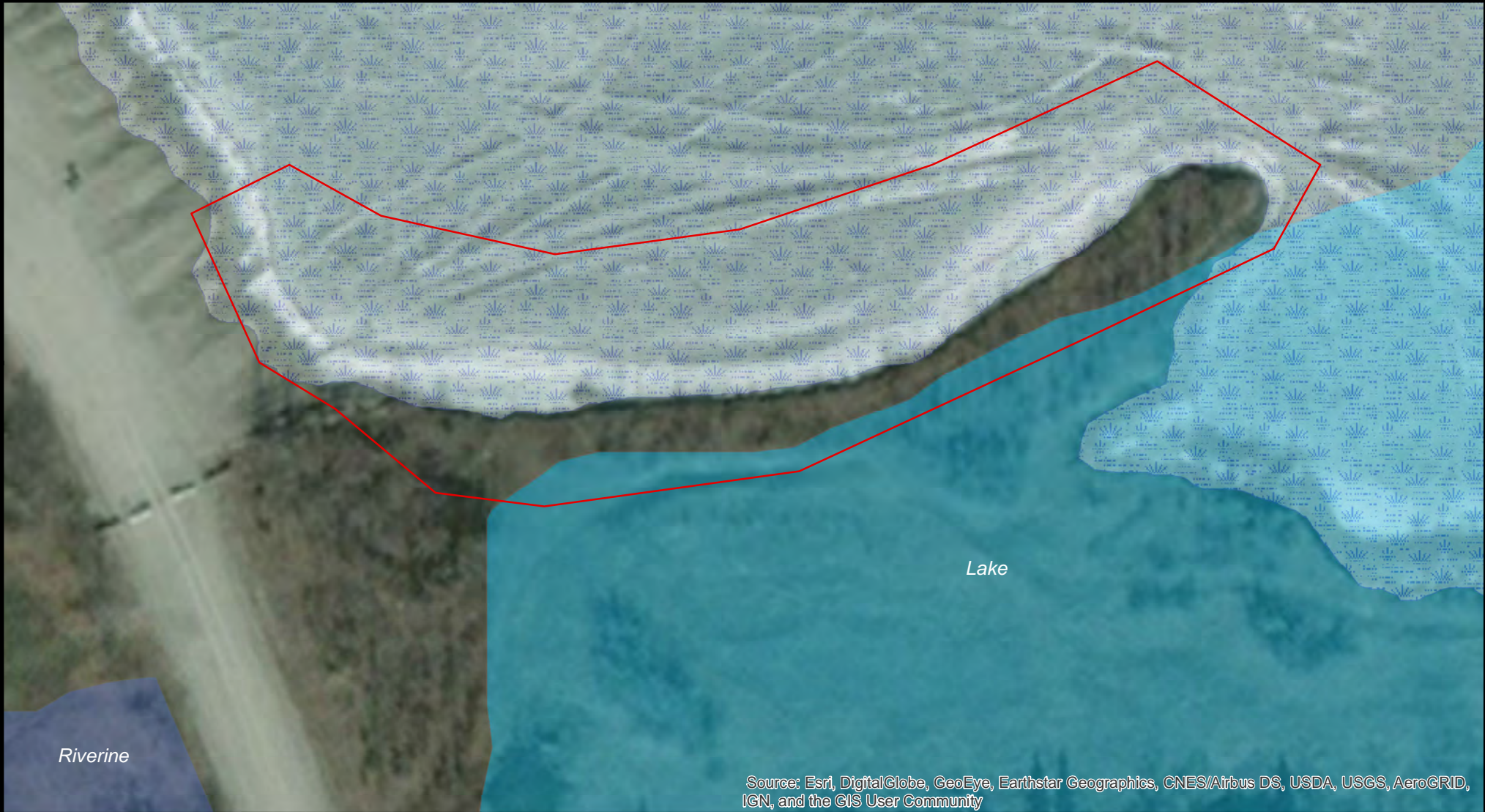
<sup>1</sup> This form is for use only in recording approved JDs involving dry land. It extracts the relevant elements of the longer approved JD form in use since 2007 for aquatic areas and adds no new fields.

east/west length. This isthmus supports upland species that have existed there for at least two decades based on aerial imagery. This shows that while it is in the historic pathway of the Tanana River, a Section 10 Navigable Water, the upland arm does not have and has not had hydric regime conditions in over two decades. However, it is surrounded by wetlands: an engineered shoreline to the north which occurred during the creation/expansion of Cushman Lake (between 2013 and 2015) and a natural wetland to the south. Due to man-made stabilization structures such as levees and roads that govern the sites hydrology, the expectation is that it will continue in upland status indefinitely. Additionally, this area is slated to be maintained as an upland lobe of Cushman Lake's shoreline in the Tanana Lakes Recreation Area Master Plan (FNSB Department of Parks and Recreation, 2007), making conversion to man-made or natural wetlands unlikely.

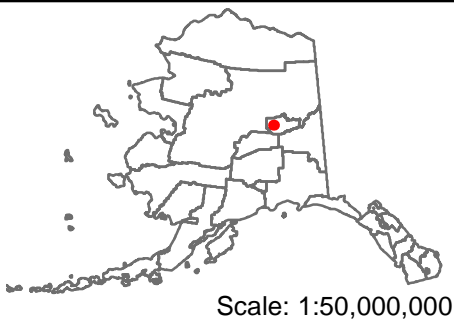


US Army Corps  
of Engineers  
Alaska District

# POA-2006-442 Tanana River. National Wetland Inventory (NWI) & United States Army Corps (USACE) Wetland Map Overlays



Source: Esri, DigitalGlobe, GeoEye, Earthstar Geographics, CNES/Airbus DS, USDA, USGS, AeroGRID, IGN, and the GIS User Community



USACE Regulatory, Alaska District  
Fairbanks Field Office (907) 474-2166  
Contact: amy.c.tipperty@usace.army.mil  
Date: 8/6/2018  
Citation: NWI (online database, 2018)  
Projection: NAD 1983 Scale: 1:751  
Imagery: ESRI Basemap online 2018



### Legend

- Project Area
- USACE mapped Section 10 Waters
- L1UBH
- R2UBG
- Boroughs