

DRY LAND APPROVED JURISDICTIONAL DETERMINATION FORM¹
U.S. Army Corps of Engineers

This form should be completed by following the instructions provided in Section IV of the JD Form Instructional Guidebook.

SECTION I: BACKGROUND INFORMATION

A. REPORT COMPLETION DATE FOR APPROVED JURISDICTIONAL DETERMINATION (JD): October 12, 2017

B. DISTRICT OFFICE, FILE NAME, AND NUMBER: Alaska District, POA-2017-497 Black River

C. PROJECT LOCATION AND BACKGROUND INFORMATION:

State: Alaska County/parish/borough: Yukon-Koyukuk Census Area City: Chalkyitsik
Center coordinates of site (lat/long in degree decimal format): Lat. 66.65486° N., Long. 143.72552° W.
Name of nearest waterbody: Black River
Name of watershed or Hydrologic Unit Code (HUC): Chalkyitsik Slough-Black River; HUC 12: 190801061702

- Check if map/diagram of review area is available upon request.
 Check if other sites (e.g., offsite mitigation sites, disposal sites, etc...) are associated with this action and are recorded on a different JD form.

D. REVIEW PERFORMED FOR SITE EVALUATION (CHECK ALL THAT APPLY):

- Office (Desk) Determination. Date: October 12, 2017
 Field Determination. Date(s):

SECTION II: SUMMARY OF FINDINGS

A. RHA SECTION 10 DETERMINATION OF JURISDICTION.

There are **no** "navigable waters of the U.S." within Rivers and Harbors Act (RHA) jurisdiction (as defined by 33 CFR part 329) in the review area.

B. CWA SECTION 404 DETERMINATION OF JURISDICTION.

There are **no** "waters of the U.S." within Clean Water Act (CWA) jurisdiction (as defined by 33 CFR part 328) in the review area.

SECTION III: DATA SOURCES.

A. SUPPORTING DATA. Data reviewed for JD (check all that apply - checked items shall be included in case file and, where checked and requested, appropriately reference sources below):

- Maps, plans, plots or plat submitted by or on behalf of the applicant/consultant:
 Data sheets prepared/submitted by or on behalf of the applicant/consultant.
 Office concurs with data sheets/delineation report.
 Office does not concur with data sheets/delineation report.
 Data sheets prepared by the Corps:
 U.S. Geological Survey Hydrologic Atlas:
 USGS NHD data.
 USGS 8 and 12 digit HUC maps.
 U.S. Geological Survey map(s). Cite scale & quad name: Black River C-6
 USDA Natural Resources Conservation Service Soil Survey. Citation:
 National wetlands inventory map(s). Cite name: USFWS mapper website: accessed October 12, 2017.
 State/Local wetland inventory map(s):
 FEMA/FIRM maps:
 100-year Floodplain Elevation is: (National Geodetic Vertical Datum of 1929)
 Photographs: Aerial (Name & Date): Satellite imagery in Simsuite (Bing 2010): accessed October 12, 2017
or Other (Name & Date): Applicant provided pictures of the Lots showing upland vegetative cover
 Previous determination(s). File no. and date of response letter:
 Applicable/supporting case law:
 Applicable/supporting scientific literature:
 Other information (please specify):

B. REQUIRED ADDITIONAL COMMENTS TO SUPPORT JD. EXPLAIN RATIONALE FOR DETERMINATION THAT THE REVIEW AREA ONLY INCLUDES DRY LAND:

The entire Block is located in uplands. Photographs of the Lots provided by the applicant show a dominance by uplands species, including white spruce (*Picea glauca*), narrow-leaf fireweed (*Chamaenerion angustifolium*), and birch trees (*Betula papyrifera*). The trees (both mature and young) do not show morphological adaptations to saturated conditions. This site conditions and information is consistent with the photographic documentation provided for another project in the vicinity (POA-2012-811), which was determined to be in uplands only. The Lots are situated on a bench around 530' elevation. The bench is approximately twenty feet above the Black River, and not regularly influenced by flooding. The most recent flood event that reached this elevation was in 1967. NWI covers this area, but does not include it as wetlands or waters.

¹ This form is for use only in recording approved JDs involving dry land. It extracts the relevant elements of the longer approved JD form in use since 2007 for aquatic areas and adds no new fields.



POA-2017-497 AJD - Block 2 in Chalkyitsik: Uplands

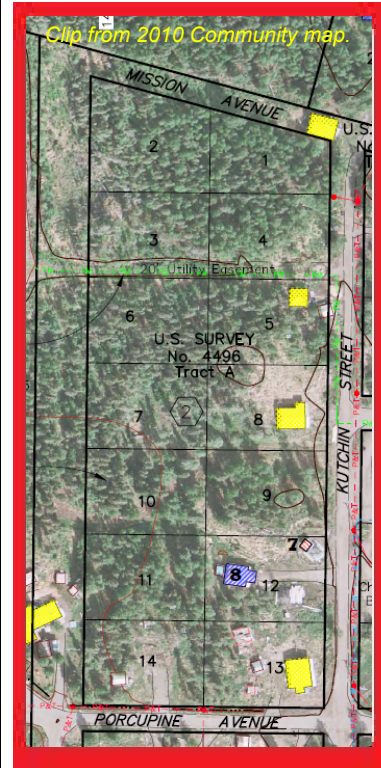
US ARMY CORPS OF ENGINEERS



LEGEND

National Wetland Inventory FWS

- Estuarine and Marine Water
- Estuarine and Marine Wetland
- Freshwater Emergent Wetland
- Freshwater Forest/Shrub Wetland
- Freshwater Pond
- Lake
- Other
- Riverine



US Army Corps of Engineers
This map was produced using the
SimSuite web application on:
13 Oct 2017 @ 0854