

**PROJECT:**

**INDIAN RIVER WETLANDS REPORT**

Prepared for Submittal to: United States Army Corp of Engineers, Sitka Field Office

**Figure 1 - Project Location & Vicinity Maps**

Location: Baranof Island, Alaska	Date: 09/04/2012	Sheet: 1 of 7
Water Course/Body: Indian River	Scale: AS NOTED	
Latitude: 57°3.160' N Longitude: 135° 18.771'W W	Drafted By: EJC	Revision #: 000
Date of Field Work: 08/07/2012 through 08/08/2012	Checked By: BH	Original Date: 09/04/2012
R&M Project #:122748 Field Crew: GS & BH	Approved By: GS	
Client: The City and Borough of Sitka Alaska	Path: R:\Projects\2012\122748\CIVIL 3D\INDIAN RIVER WETLANDS.DWG	



R&M Engineering - Ketchikan, Inc.  
355 Carlanna Lake Road  
Ketchikan, Alaska 99901

Phone: (907) 225-7917  
Fax: (907) 225-3441

Vicinity Map Source  
USGS Sitka A5 SE - 1:24K Series, Alaska  
Contours and Elevations in Meters  
20 Meter Intervals

R&M Engineering Wrangell Office  
PO Box 1331  
Wrangell, Alaska 99929

Phone: (907) 874-2177  
Fax: (907) 874-2187





PROJECT:

## INDIAN RIVER WETLANDS

Prepared for Submittal to: United States Army Corp of Engineers, Sitka Field Office

### **Figure 2 - Study Area Aerial Photograph**

**Source: City of Sitka GIS**

Location: Baranof Island, Alaska	Date: 09/04/2012	Sheet: 2 of 7
Water Course/Body: Indian River	Scale: AS NOTED	
Latitude: 57°3.160' N	Longitude: 135° 18.771'W W	Drafted By: EJC
Date of Field Work: 08/07/2012 through 08/08/2012	Checked By: BH	Revision #: 000
R&M Project #:122748	Field Crew: GS & BH	Approved By: GS
Client: The City and Borough of Sitka Alaska	Path: R:\Projects\2012\122748\CIVIL 3D\INDIAN RIVER WETLANDS.DWG	Original Date: 09/04/2012



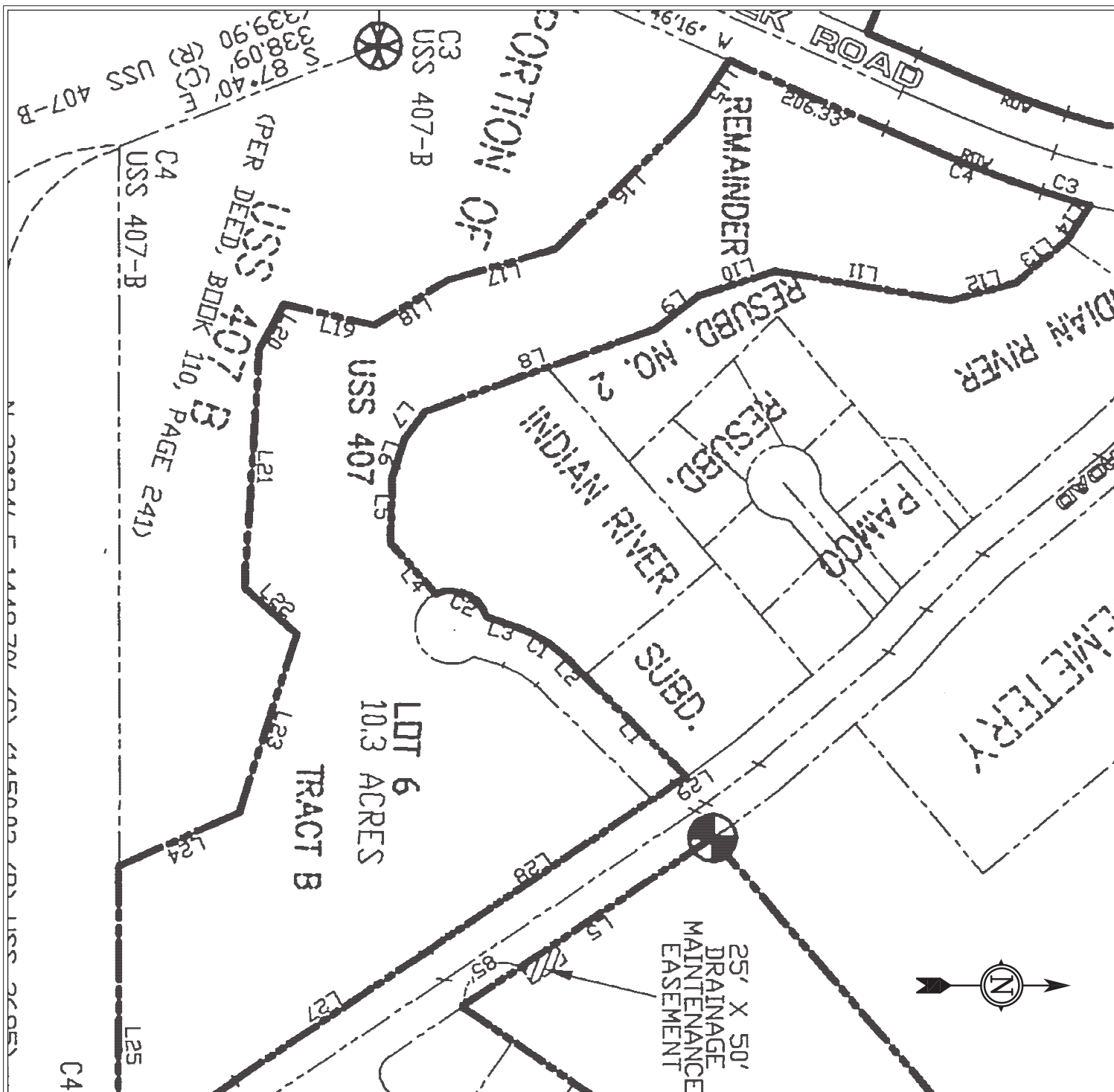
R&M Engineering - Ketchikan, Inc.  
355 Carlanna Lake Road  
Ketchikan, Alaska 99901

Phone: (907) 225-7917  
Fax: (907) 225-3441

R&M Engineering Wrangell Office  
PO Box 1331  
Wrangell, Alaska 99929

Phone: (907) 874-2177  
Fax: (907) 874-2187





PROJECT:

## INDIAN RIVER WETLAND DELINEATION REPORT

Prepared for Submittal to: United States Army Corp of Engineers, Sitka Field Office

### Figure 3 - SHELDON COLLEGE SUBDIVISION PLAT OF U.S.S 407-B

#### PLAT 2008-9 SITKA DISTRICT

Location: Baranof Island, Alaska	Date: 09/04/2012	Sheet: 3 of 7
Water Course/Body: Indian River	Scale: AS NOTED	
Latitude: 57°3.160' N Longitude: 135° 18.771'W W	Drafted By: EJC	Revision #: 000
Date of Field Work: 08/07/2012 through 08/08/2012	Checked By: BH	Original Date: 09/04/2012
R&M Project #:122748 Field Crew: GS & BH	Approved By: GS	
Client: The City and Borough of Sitka Alaska	Path: R:\Projects\2012\122748\CIVIL 3D\INDIAN RIVER WETLANDS.DWG	

R&M

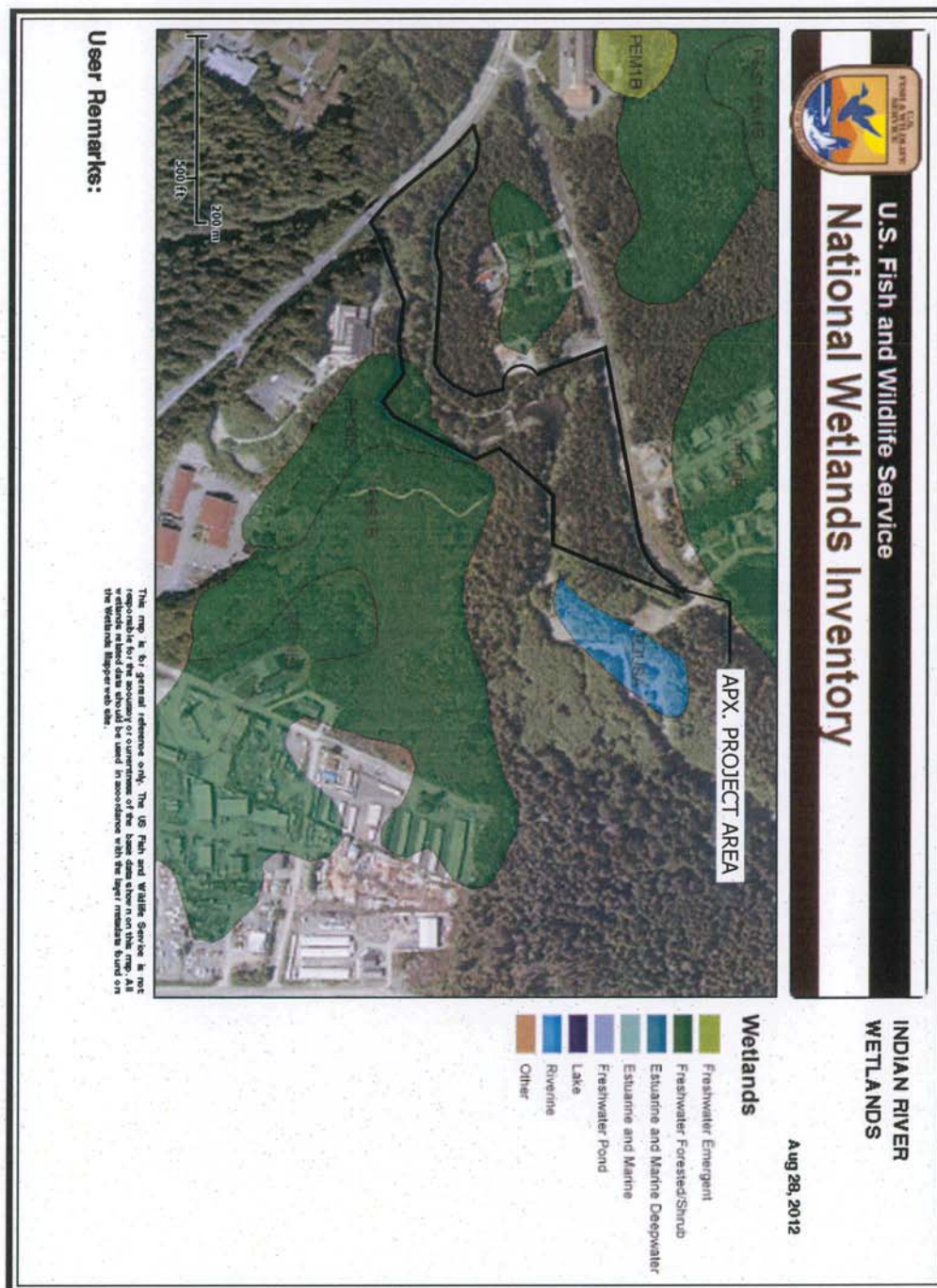
R&M Engineering - Ketchikan, Inc.  
355 Carlanna Lake Road  
Ketchikan, Alaska 99901

Phone: (907) 225-7917  
Fax: (907) 225-3441

Plat Source  
Sitka Recording District  
Plat 2009-7

R&M Engineering Wrangell Office  
PO Box 1331  
Wrangell, Alaska 99929

Phone: (907) 874-2177  
Fax: (907) 874-2187



## INDIAN RIVER WETLAND DELINIATION

### Wetlands Delineation Report - Indian River

Prepared for Submittal to: United States Army Corp of Engineers, Sitka Field Office

### Figure 4 - National Wetlands Inventory Overlay

Location: Baranof Island, Alaska	Date: 09/04/2012	Sheet: 4 of 7
Water Course/Body: Indian River	Scale: AS NOTED	
Latitude: 57°3.160' N Longitude: 135° 18.771'W W	Drafted By: EJC	Revision #: 000
Date of Field Work: 08/07/2012 through 08/08/2012	Checked By: BH	Original Date: 09/04/2012
R&M Project #:122748 Field Crew: GS & BH	Approved By: GS	
Client: The City and Borough of Sitka Alaska	Path: R:\Projects\2012\122748\CIVIL 3D\INDIAN RIVER WETLANDS.DWG	



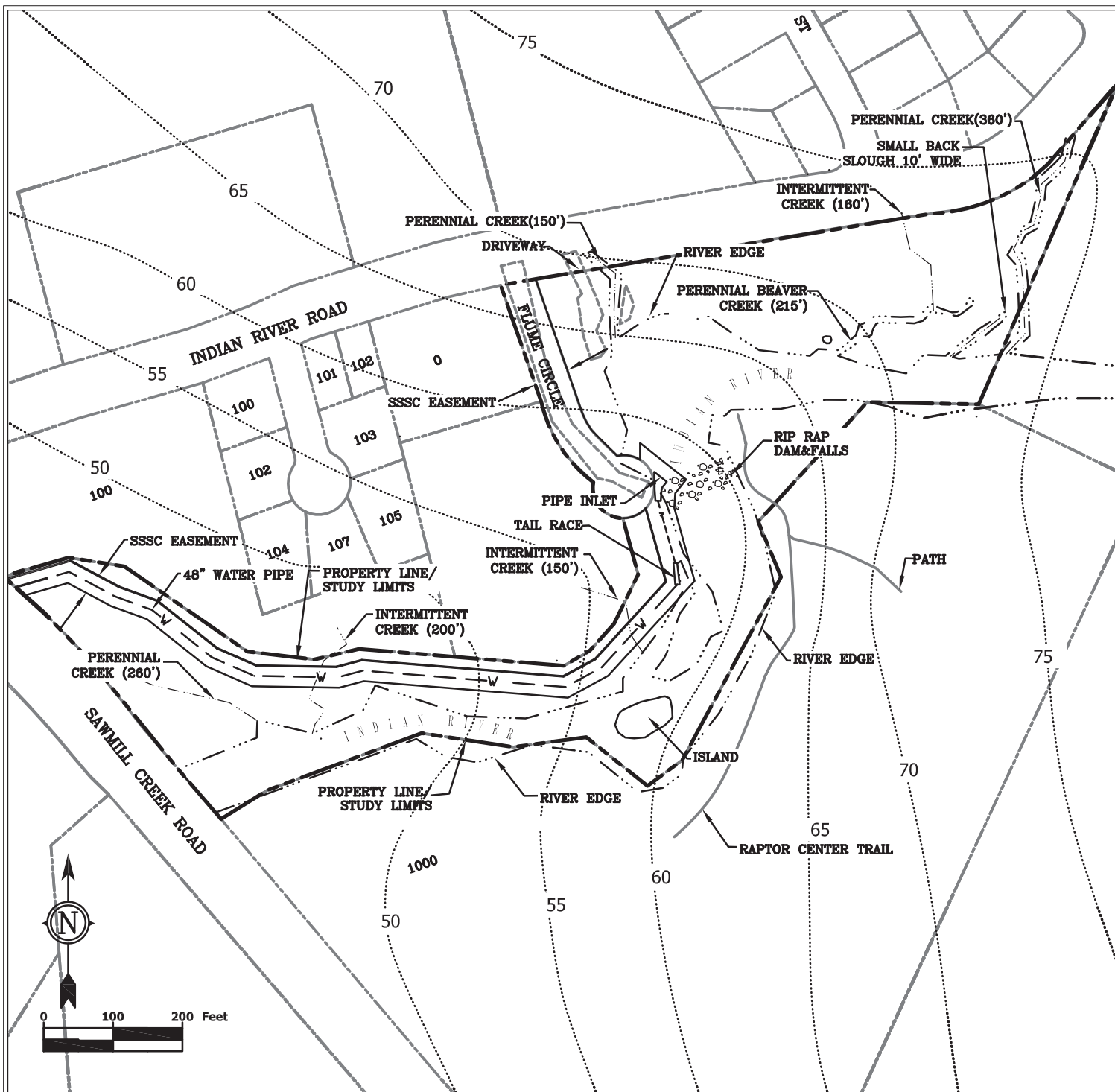
R&M Engineering - Ketchikan, Inc.  
355 Carlanna Lake Road  
Ketchikan, Alaska 99901

Phone: (907) 225-7917  
Fax: (907) 225-3441

Map Source  
U.S. Fish and Wildlife Service  
National Wetlands Inventory - 08/28/2012  
[www.fws.gov/wetlands/Data/Mapper.html](http://www.fws.gov/wetlands/Data/Mapper.html)

R&M Engineering Wrangell Office  
PO Box 1331  
Wrangell, Alaska 99929

Phone: (907) 874-2177  
Fax: (907) 874-2187



PROJECT:

## INDIAN RIVER WETLANDS

Prepared for Submittal to: United States Army Corp of Engineers, Sitka Field Office

**Figure 5 - Topographic Map.** Elevations are based on the best available information taken from USGS mapping and field notes. As such, this topographic map is only intended to show the general topography of the study area.

Location: Baranof Island, Alaska	Date: 09/04/2012	Sheet: 5 of 7
Water Course/Body: Indian River	Scale: AS NOTED	
Latitude: 57°3.160' N	Longitude: 135° 18.771'W W	Drafted By: EJC
Date of Field Work: 08/07/2012 through 08/08/2012	Checked By: BH	Revision #: 000
R&M Project #:122748	Field Crew: GS & BH	Original Date: 09/04/2012
Client: The City and Borough of Sitka Alaska	Approved By: GS	
	Path: R:\Projects\2012\122748\CIVIL 3D\INDIAN RIVER WETLANDS.DWG	



R&M Engineering - Ketchikan, Inc.  
355 Carlanna Lake Road  
Ketchikan, Alaska 99901

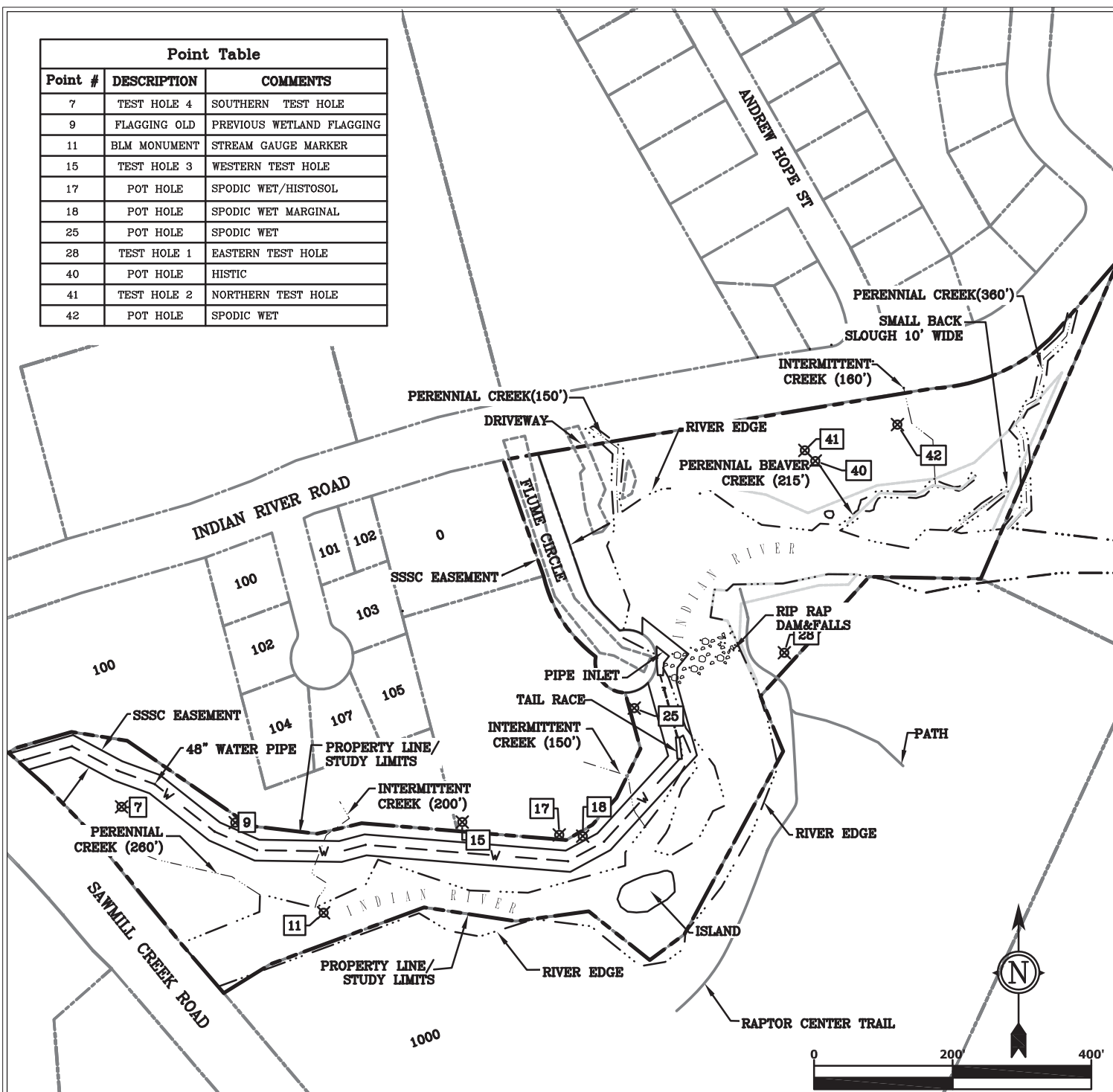
Phone: (907) 225-7917  
Fax: (907) 225-3441

R&M Engineering Wrangell Office  
PO Box 1331  
Wrangell, Alaska 99929

Phone: (907) 874-2177  
Fax: (907) 874-2187



Point Table		
Point #	DESCRIPTION	COMMENTS
7	TEST HOLE 4	SOUTHERN TEST HOLE
9	FLAGGING OLD	PREVIOUS WETLAND FLAGGING
11	BLM MONUMENT	STREAM GAUGE MARKER
15	TEST HOLE 3	WESTERN TEST HOLE
17	POT HOLE	SPODIC WET/HISTOSOL
18	POT HOLE	SPODIC WET MARGINAL
25	POT HOLE	SPODIC WET
28	TEST HOLE 1	EASTERN TEST HOLE
40	POT HOLE	HISTIC
41	TEST HOLE 2	NORTHERN TEST HOLE
42	POT HOLE	SPODIC WET



PROJECT:

## INDIAN RIVER WETLANDS

Prepared for Submittal to: United States Army Corp of Engineers, Sitka Field Office

**Figure 6 - Test Hole Locations**

Location: Baranof Island, Alaska	Date: 09/04/2012	Sheet: 6 of 7
Water Course/Body: Indian River	Scale: AS NOTED	
Latitude: 57°3.160' N	Longitude: 135° 18.771'W W	Drafted By: EJC
Date of Field Work: 08/07/2012 through 08/08/2012	Checked By: BH	Revision #: 000
R&M Project #:122748	Field Crew: GS & BH	Original Date: 09/04/2012
Client: The City and Borough of Sitka Alaska	Approved By: GS	
Path: R:\Projects\2012\122748\CIVIL 3D\INDIAN RIVER WETLANDS.DWG		

R&M

R&M Engineering - Ketchikan, Inc.  
355 Carlanna Lake Road  
Ketchikan, Alaska 99901

Phone: (907) 225-7917  
Fax: (907) 225-3441

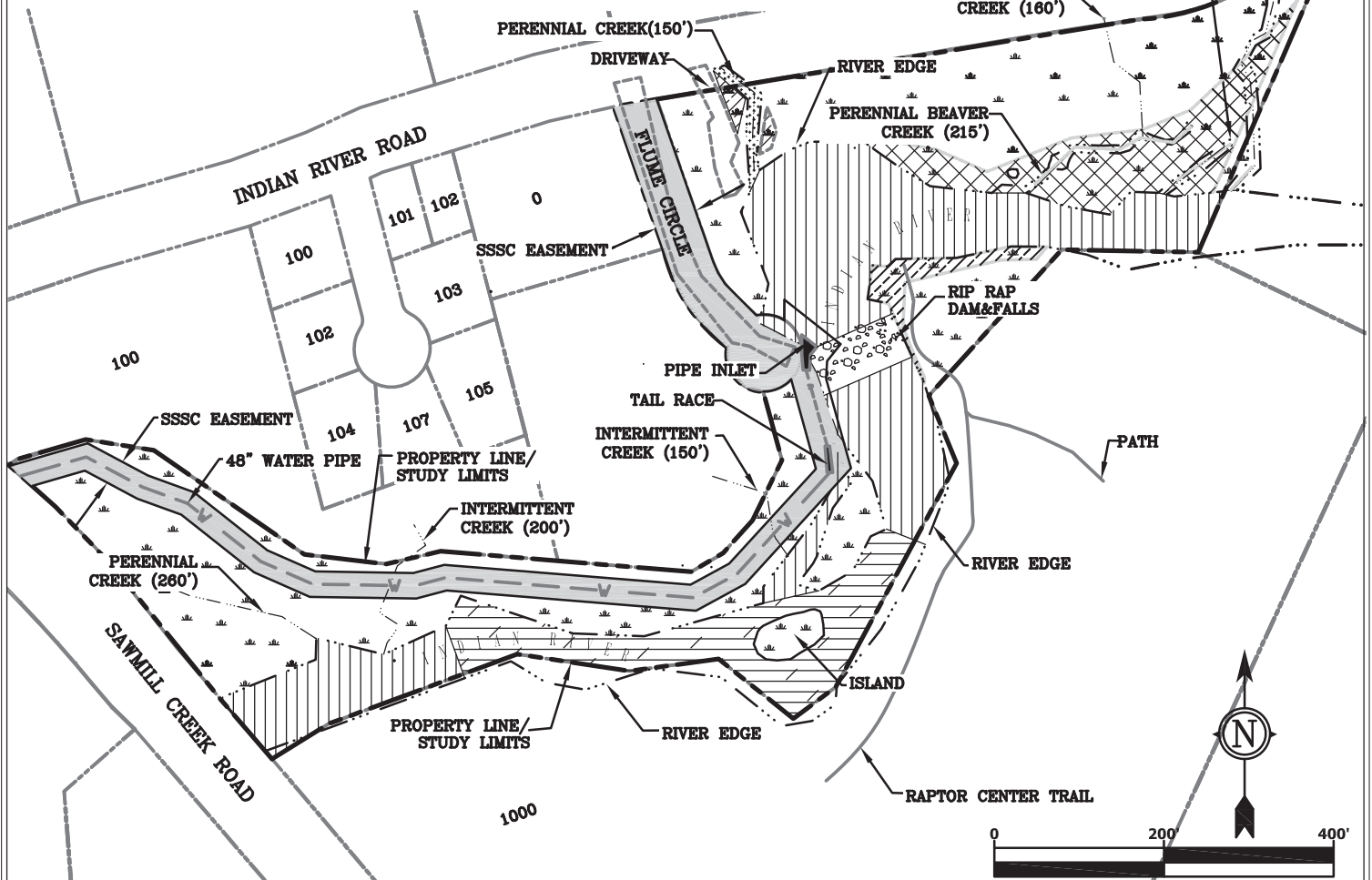
R&M Engineering Wrangell Office  
PO Box 1331  
Wrangell, Alaska 99929

Phone: (907) 874-2177  
Fax: (907) 874-2187

# WETLANDS CLASSIFICATION KEY

	PF04Eg	0.03 acres
	PF04Bg	5.12 acres
	PF04By/PF04Eg (MOSAIC)	0.67 acres
	PF04B(disturbed)	1.30 acres
	R3RB1,2 R3UB1	0.79 acres
	R3UB1,2	2.34 acres
	R3UB1,2,3	0.05 acres

TOTAL: 10.30 ACRES



PROJECT:

## INDIAN RIVER WETLANDS

Prepared for Submittal to: United States Army Corp of Engineers, Sitka Field Office

Figure 7 - Soil Classifications

Location: Baranof Island, Alaska	Date: 09/04/2012	Sheet: 7 of 7
Water Course/Body: Indian River	Scale: AS NOTED	
Latitude: 57°3.160' N Longitude: 135° 18.771'W W	Drafted By: EJC	Revision #: 000
Date of Field Work: 08/07/2012 through 08/08/2012	Checked By: BH	Original Date: 09/04/2012
R&M Project #:122748 Field Crew: GS & BH	Approved By: GS	
Client: The City and Borough of Sitka Alaska	Path: R:\Projects\2012\122748\CIVIL 3D\INDIAN RIVER WETLANDS.DWG	



R&M Engineering - Ketchikan, Inc.  
355 Carlanna Lake Road  
Ketchikan, Alaska 99901

Phone: (907) 225-7917  
Fax: (907) 225-3441

R&M Engineering Wrangell Office  
PO Box 1331  
Wrangell, Alaska 99929

Phone: (907) 874-2177  
Fax: (907) 874-2187