



This map is based on U.S.G.S quad Beechey Point (B-3)  
 and on the Unit Operator's Facility Maps.



**PROJECT LOCATION:**

PRUDHOE BAY UNIT - PUT 23 MINE SITE  
 NAD83  
 LAT. = 70° 17' 32.029" / DD 70.292230  
 LONG. = -148° 31' 14.313" / DD -148.520642

ALASKA STATE PLANE ZONE 4, NAD83  
 X = 1,623,124.46 FEET  
 Y = 5,958,525.96 FEET

SEC. 14, 22, 23 T11N, R14E UMIAT M.

ADL # 028306, 028307, 028308

DATUM: MEAN SEA LEVEL

PURPOSE: MINE STATUS

ADJACENT PROPERTY OWNER:  
 STATE OF ALASKA

**BP EXPLORATION (ALASKA) INC.**

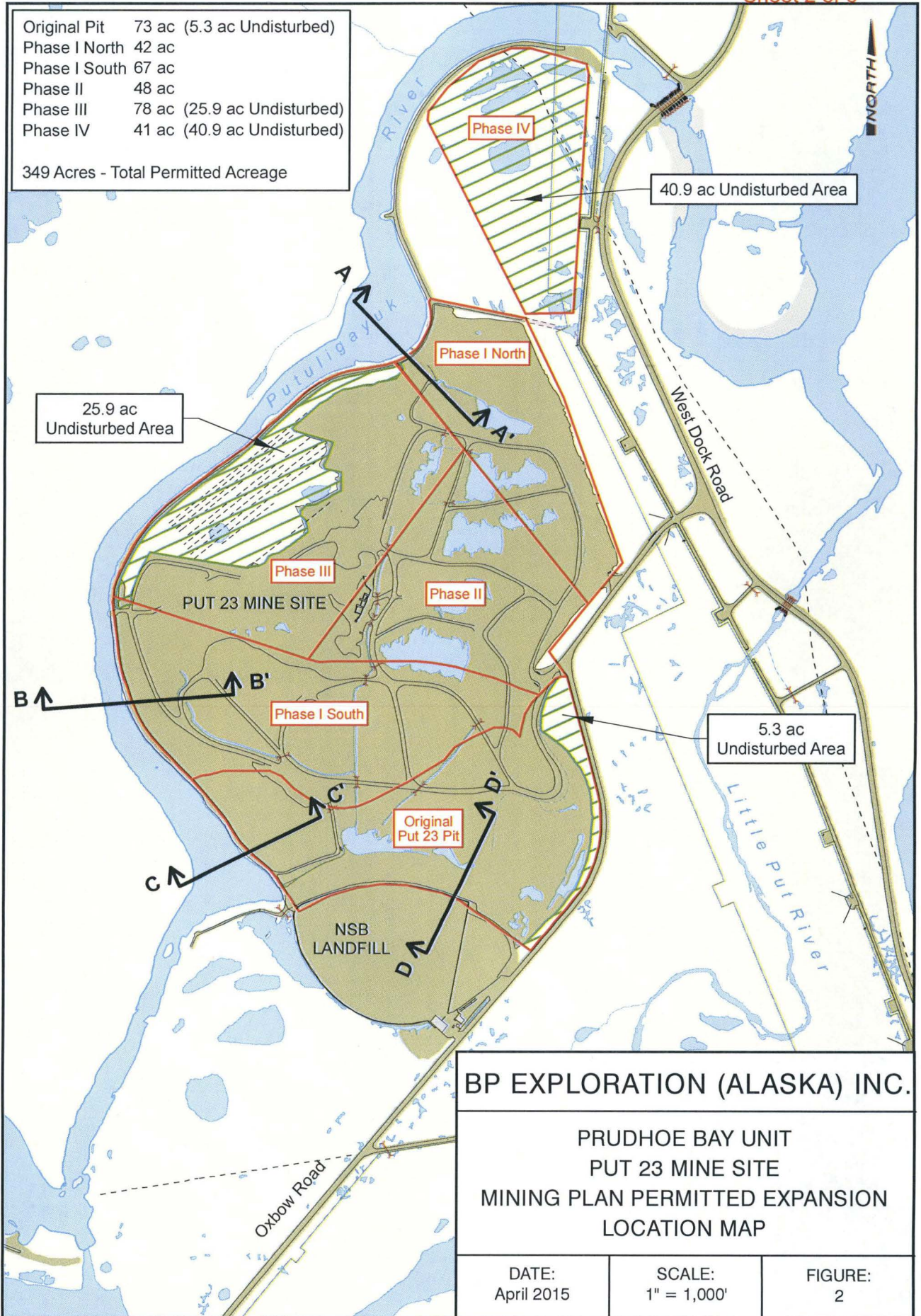
**PRUDHOE BAY UNIT  
 PUT 23 MINE SITE  
 2014 MINE SITE STATUS  
 VICINITY MAP**

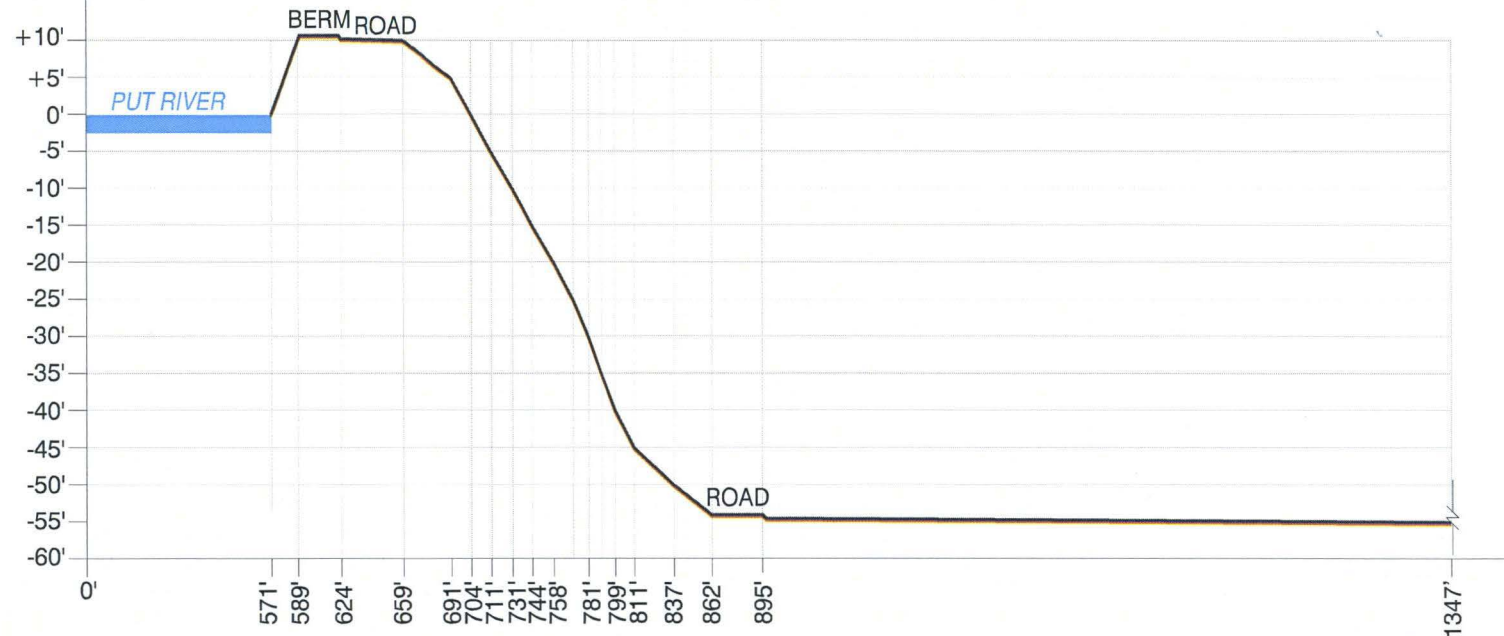
DATE:  
 April 2014

SCALE:  
 1" = 1 Mile

FIGURE:  
 1







PROFILE A - A'  
 VERTICAL EXAGGERATION x4

**BP EXPLORATION (ALASKA) INC.**

PRUDHOE BAY UNIT  
 PUT 23 MINE SITE  
 MINING PLAN PERMITTED EXPANSION  
 CROSS SECTIONS

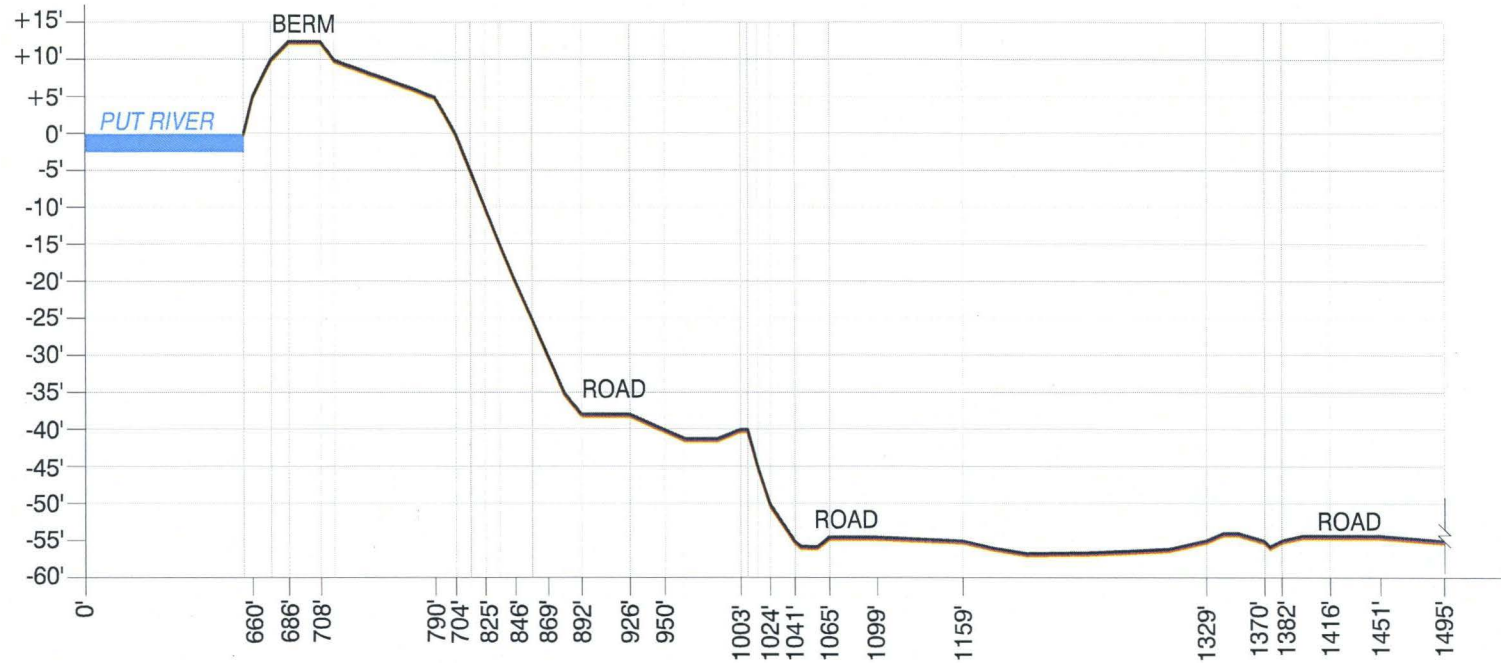
DATE:  
 April 2015

SCALE:  
 N/A

FIGURE:  
 3

- 1) ALL DIMENSIONS ARE APPROXIMATE
- 2) BASED ON TOPOGRAPHY FROM 2014 PHOTOGRAPHY





**PROFILE B - B'**  
 VERTICAL EXAGGERATION x4

**BP EXPLORATION (ALASKA) INC.**

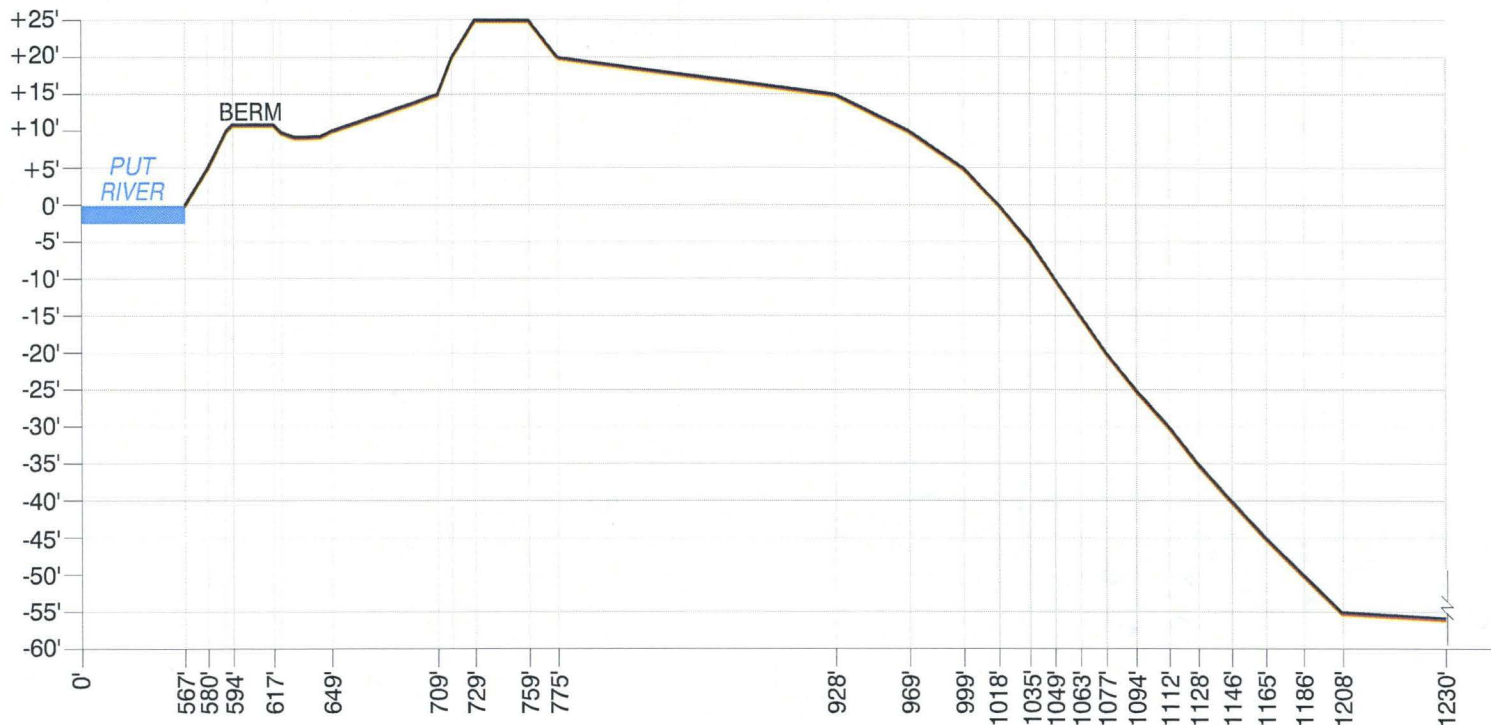
PRUDHOE BAY UNIT  
 PUT 23 MINE SITE  
 MINING PLAN PERMITTED EXPANSION  
 CROSS SECTIONS

DATE:  
 April 2015

SCALE:  
 N/A

FIGURE:  
 4

- 1) ALL DIMENSIONS ARE APPROXIMATE
- 2) BASED ON TOPOGRAPHY FROM 2014 PHOTOGRAPHY



**PROFILE C - C'**  
 VERTICAL EXAGGERATION x4

**BP EXPLORATION (ALASKA) INC.**

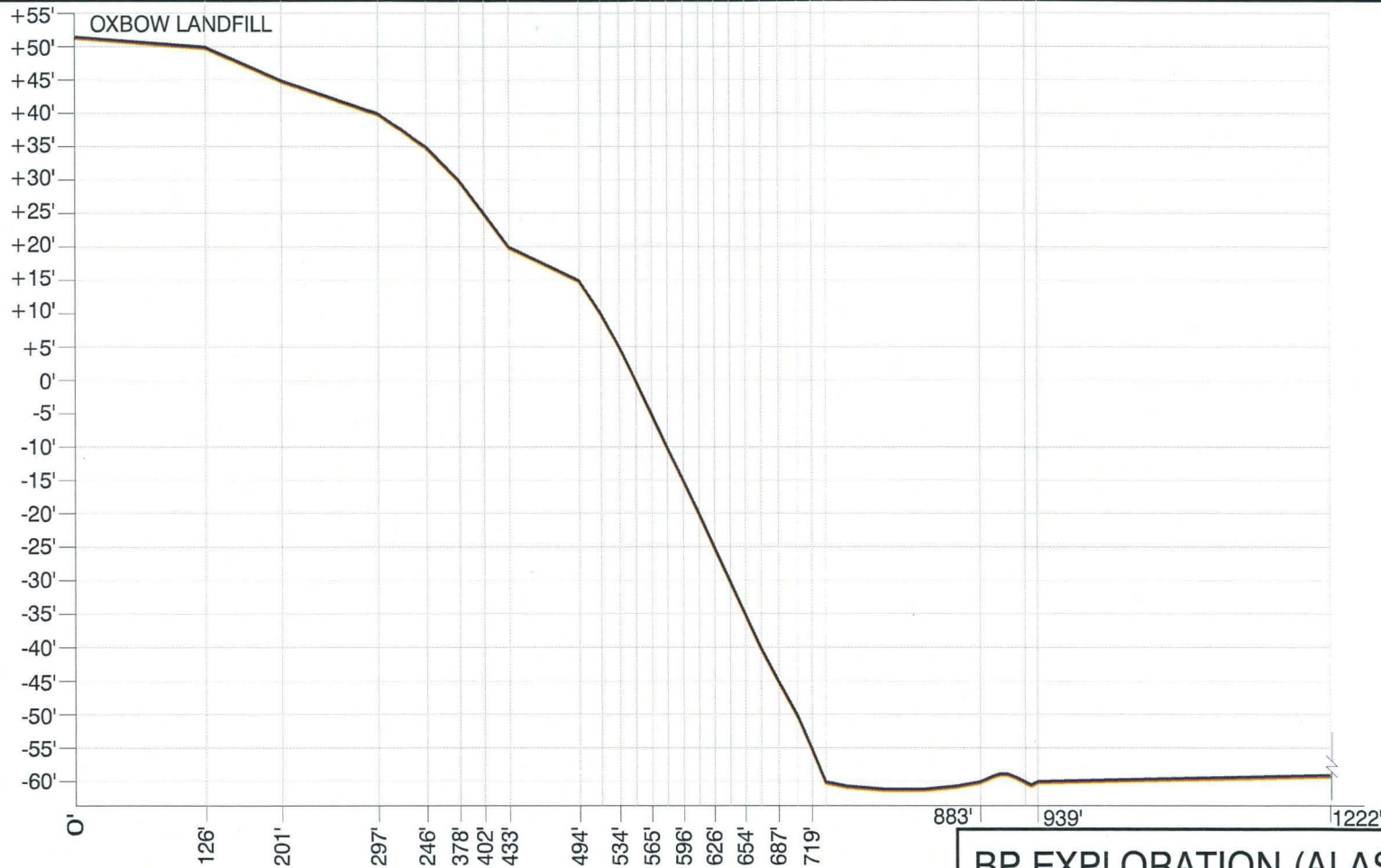
PRUDHOE BAY UNIT  
 PUT 23 MINE SITE  
 MINING PLAN PERMITTED EXPANSION  
 CROSS SECTIONS

DATE:  
 April 2015

SCALE:  
 N/A

FIGURE:  
 5

1) ALL DIMENSIONS ARE APPROXIMATE  
 2) BASED ON TOPOGRAPHY FROM 2014 PHOTOGRAPHY



**PROFILE D - D'**  
 VERTICAL EXAGGERATION x4

**BP EXPLORATION (ALASKA) INC.**

**PRUDHOE BAY UNIT  
 PUT 23 MINE SITE  
 MINING PLAN PERMITTED EXPANSION  
 CROSS SECTIONS**

DATE: April 2015	SCALE: N/A	FIGURE: 6
---------------------	---------------	--------------

1) ALL DIMENSIONS ARE APPROXIMATE  
 2) BASED ON TOPOGRAPHY FROM 2014 PHOTOGRAPHY