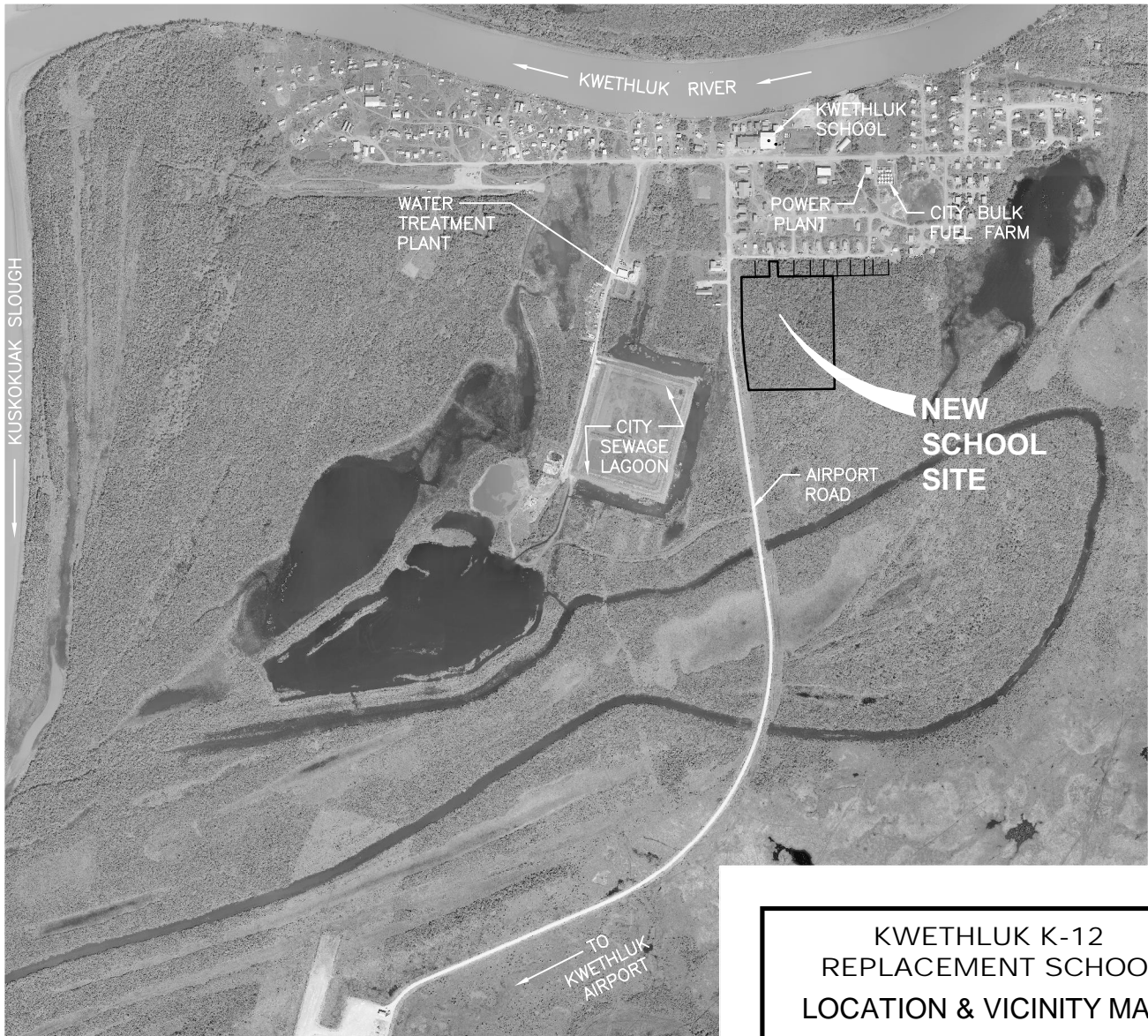


LOCATION MAP



KWETHLUK VICINITY MAP



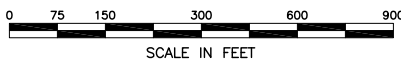
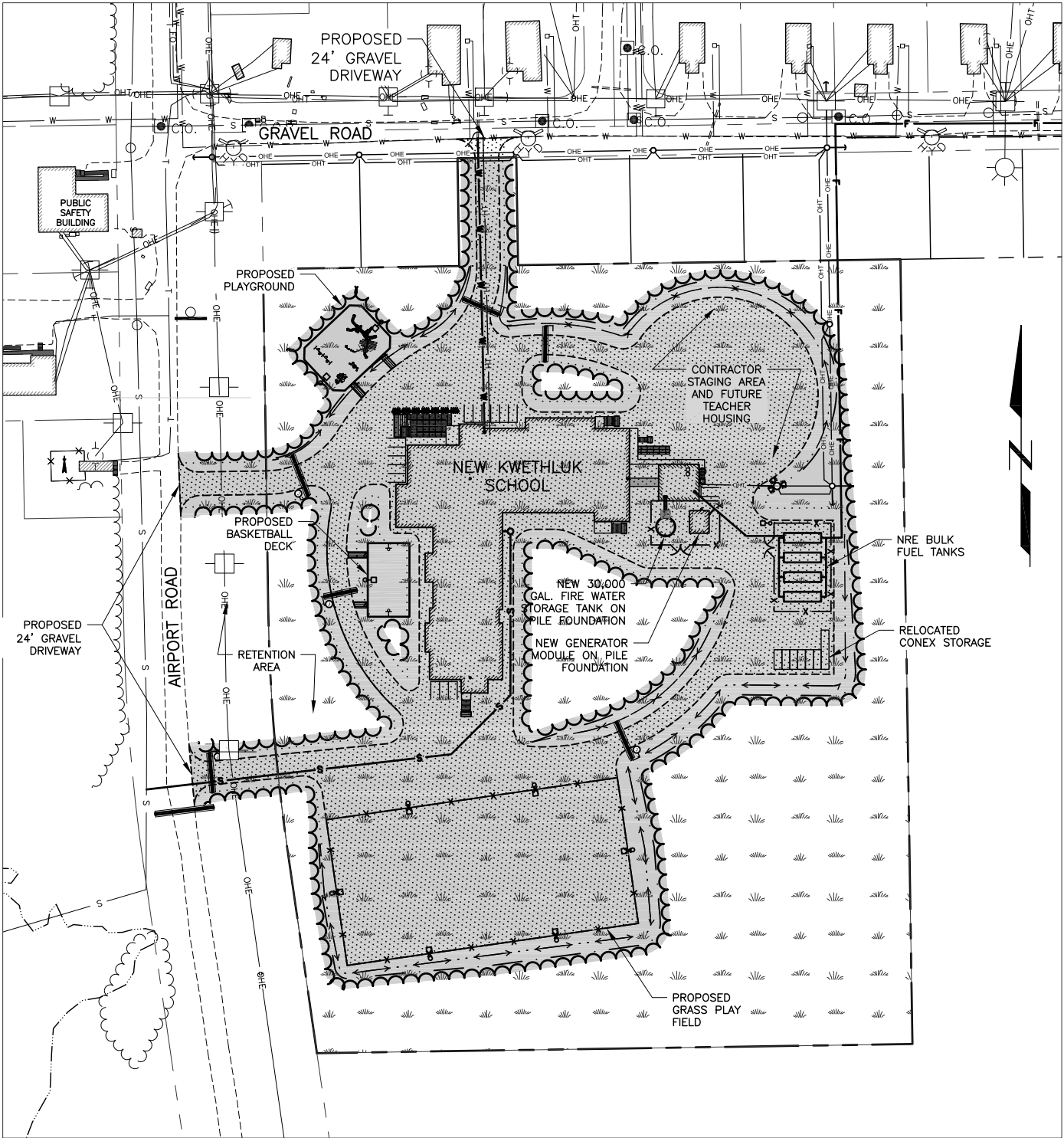
**KWETHLUK K-12
REPLACEMENT SCHOOL
LOCATION & VICINITY MAP**

Application by: LKSD
 Location: Kwethluk, Alaska
 Lat. 60.8075° N, Long. 161.4229° W
 USGS Bethel (D-7) Alaska
 Township 8N, Range 69W, Section 5
 Seward Meridian
 Water Body: Kwethluk River

DATE: April 2015

SHEET 1 OF 4

FILE: U:\204600113\DWGS\N\FIGURES\ACOE\204600113_ACOE_FIG-02.DWG PLOTTED: Apr 23, 2015 -- 9:02:17 AM (Pamone, Cindl)



LEGEND:

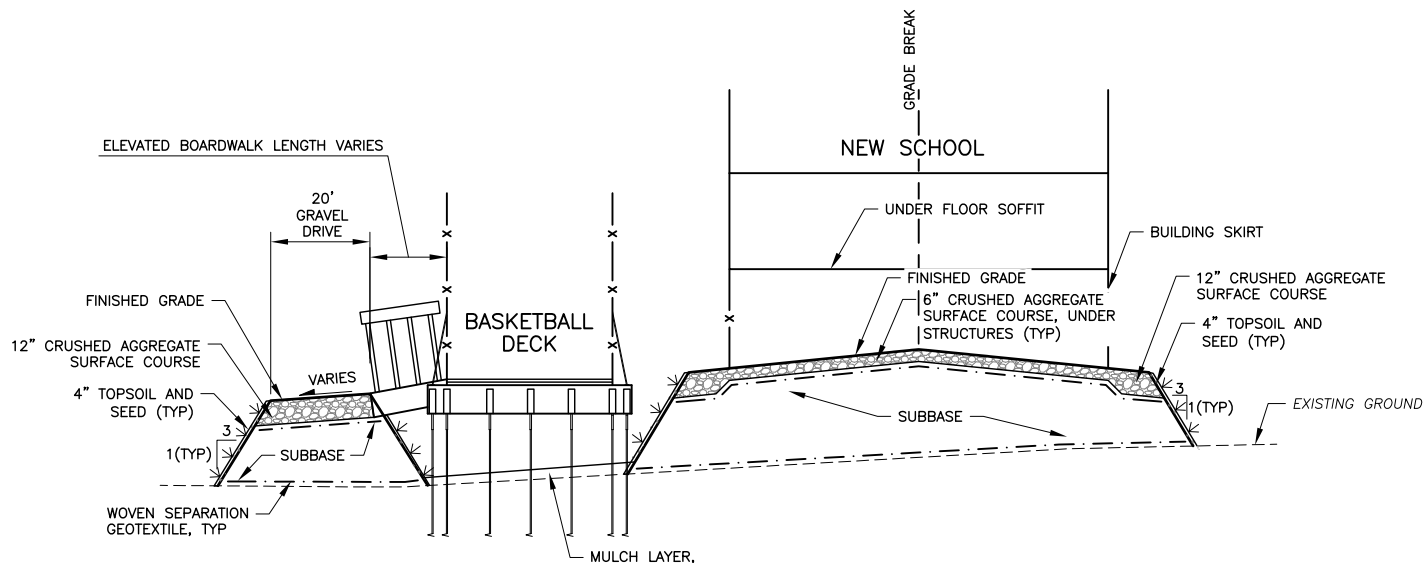
	PROPOSED CULVERT
	WETLANDS
	WETLAND IMPACT
	FILL/GRAVEL

**KWETHLUK K-12
REPLACEMENT SCHOOL
SITE PLAN**

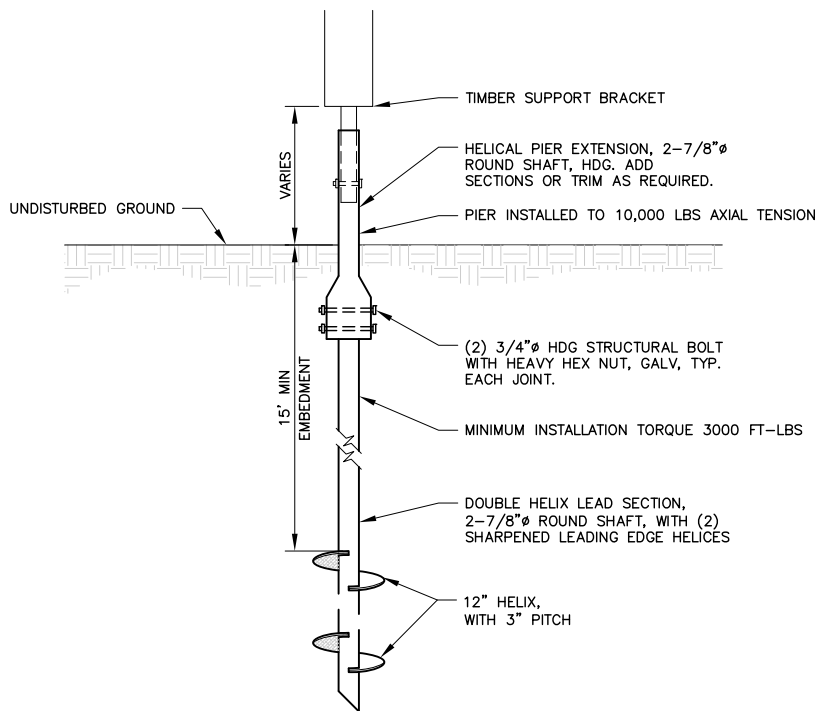
Application by: LKSD
 Location: Kwethluk, Alaska
 Lat. 60.8075° N, Long. 161.4229° W
 USGS Bethel (D-7) Alaska
 Township 8N, Range 69W, Section 5
 Seward Meridian
 Water Body: Kwethluk River

DATE: April 2015 SHEET 2 OF 4

FILE: U:\204600113\DWGS\N\FIGURES\ACOE\204600113_ACOE_FIG-03-04.DWG PLOTTED: Apr. 23, 2015 10:55:18 AM (Pannone, Cindi)



1 NEW SCHOOL & BASKETBALL DECK SECTION
 3 SCALE: NOT TO SCALE



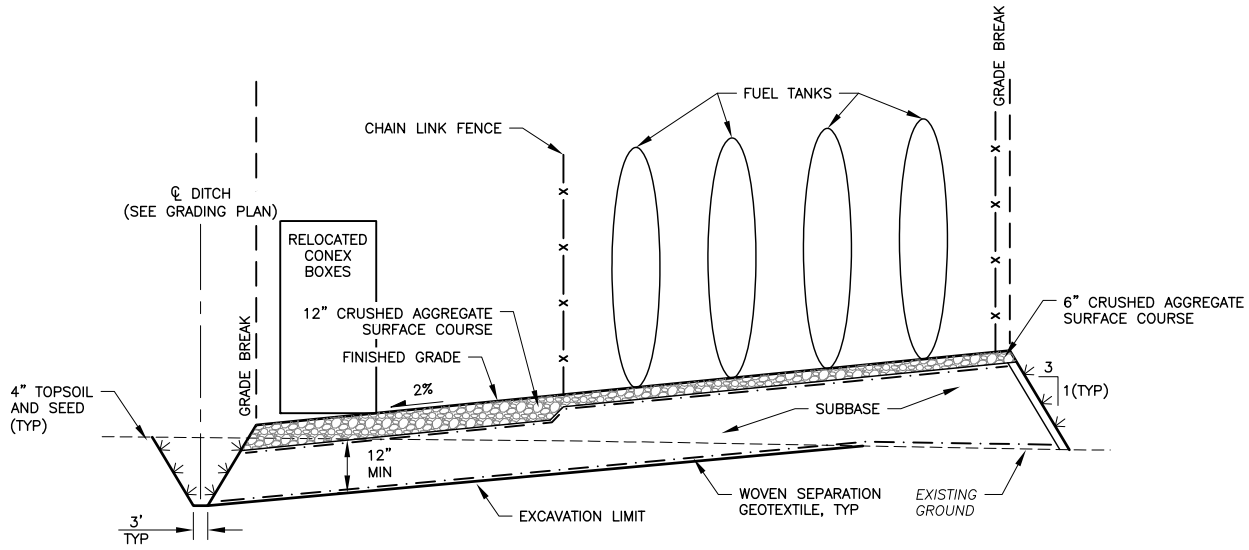
2 HELICAL PIER DETAIL
 3 SCALE: NOT TO SCALE

**KWETHLUK K-12
 REPLACEMENT SCHOOL
 SITE SECTIONS**

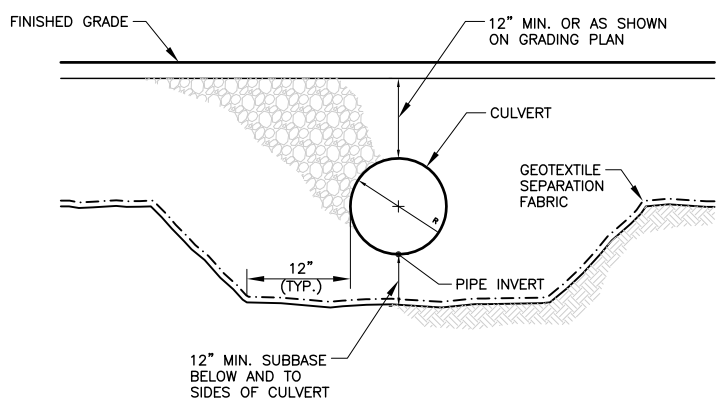
Application by: LKSD
 Location: Kwethluk, Alaska
 Lat. 60.8075° N, Long. 161.4229° W
 USGS Bethel (D-7) Alaska
 Township 8N, Range 69W, Section 5
 Seward Meridian
 Water Body: Kwethluk River

DATE: April 2015 SHEET 3 OF 4

FILE: U:\204600113\DWGS\N\FIGURES\ACOE\204600113_ACOE_FIG-03-04.DWG PLOTTED: Apr. 23, 2015 10:29:37 AM (Pannone, Cindi)



1 STORAGE/FUEL FARM SECTION
4 SCALE: NOT TO SCALE



2 TYPICAL CULVERT SECTION
4 SCALE: N.T.S.

**KWETHLUK K-12
REPLACEMENT SCHOOL
SITE SECTIONS**

Application by: LKSD
Location: Kwethluk, Alaska
Lat. 60.8075° N, Long. 161.4229° W
USGS Bethel (D-7) Alaska
Township 8N, Range 69W, Section 5
Seward Meridian
Water Body: Kwethluk River

DATE: April 2015 SHEET 4 OF 4