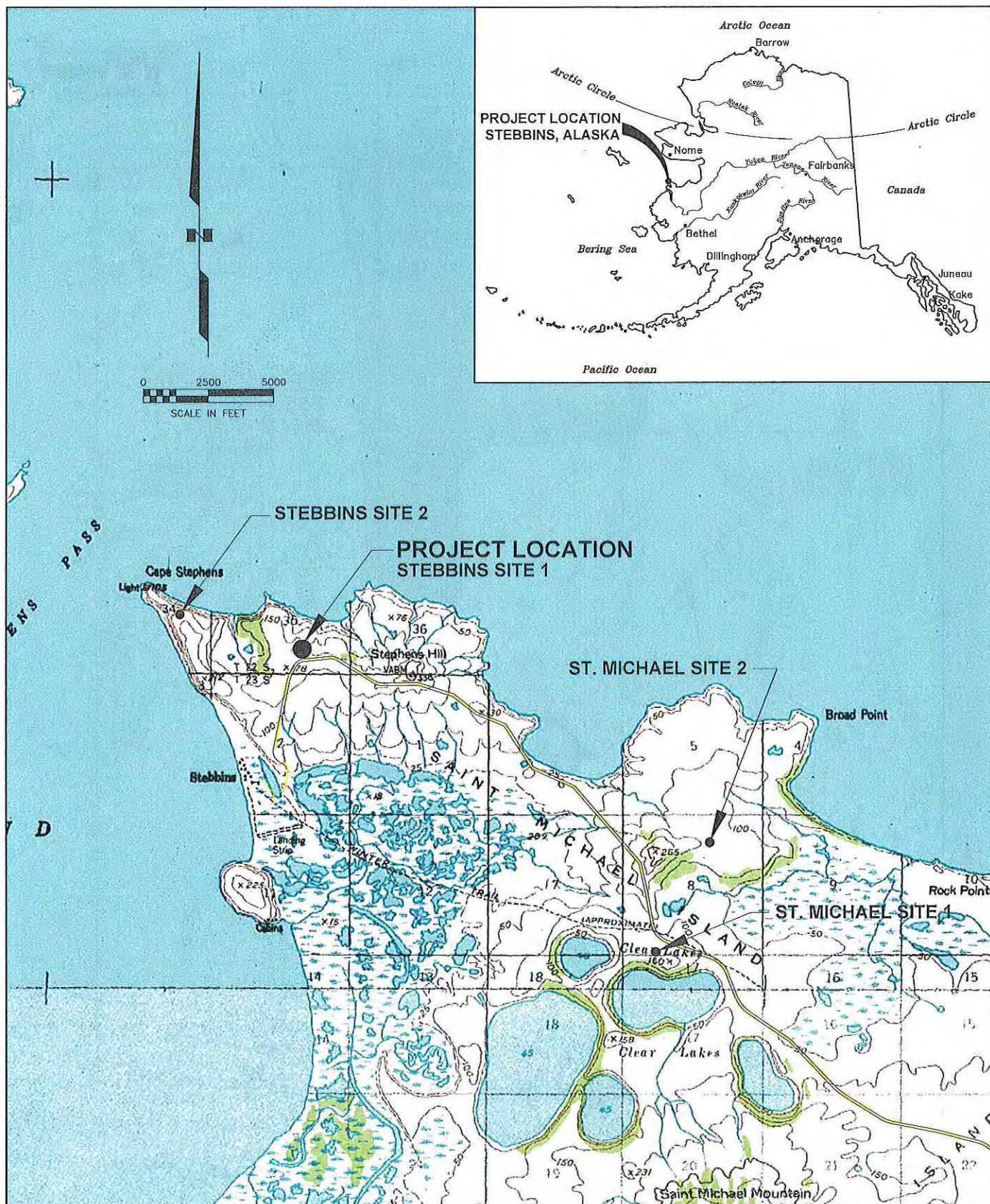
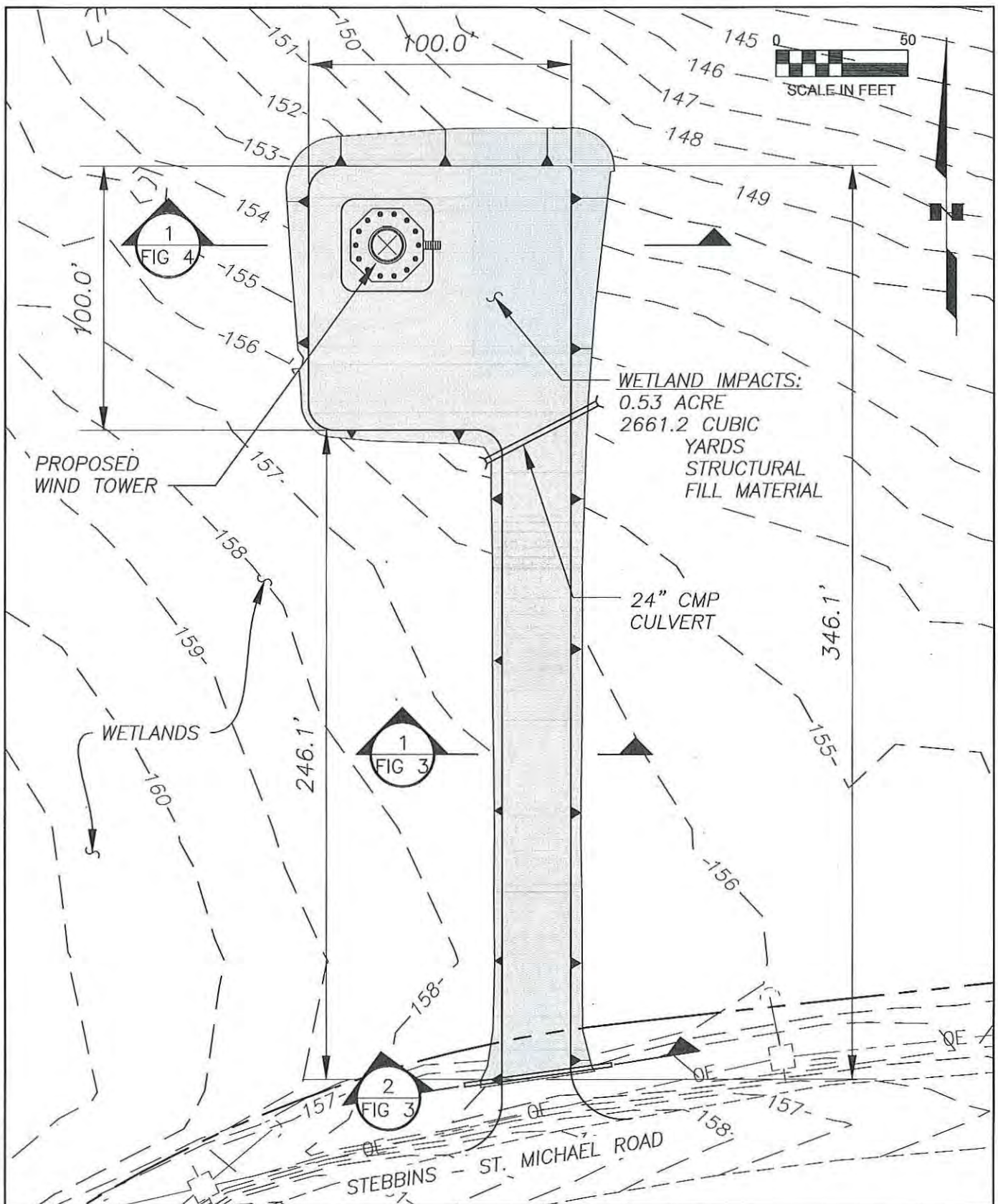


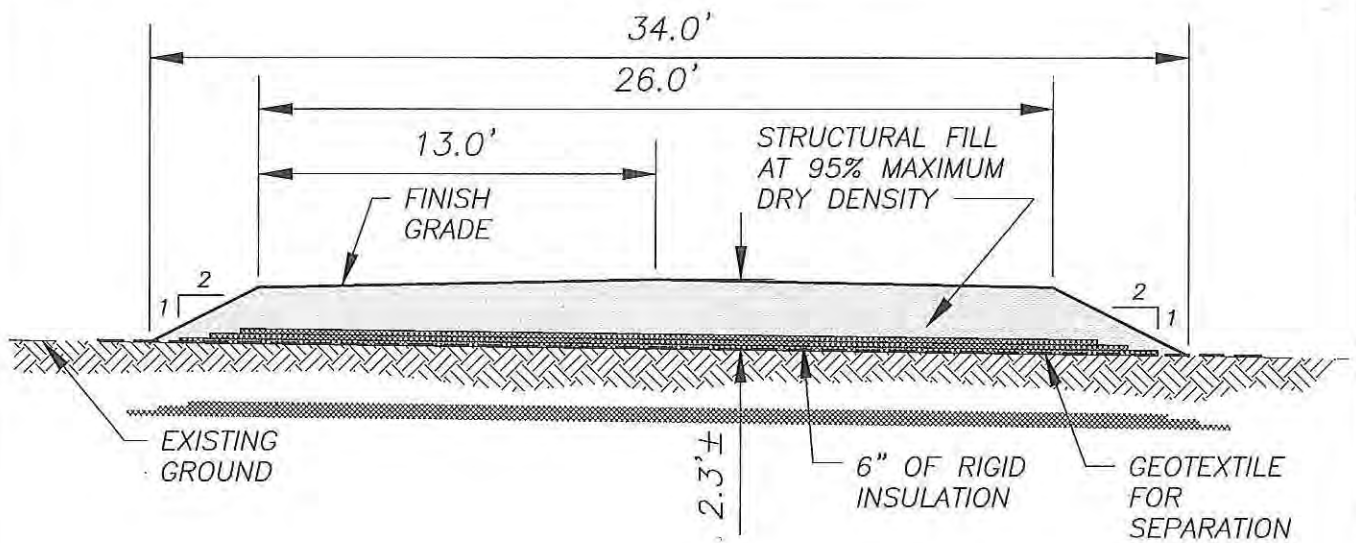
H:\Jobs\14-023 Stebbins Wind Project Design (AVEC term)\CADD\DRAWINGS\14023\_00\_Fig1-404, 1=1, 08-09-16 at 15:59 by jkk  
 LAYOUT: Figure2



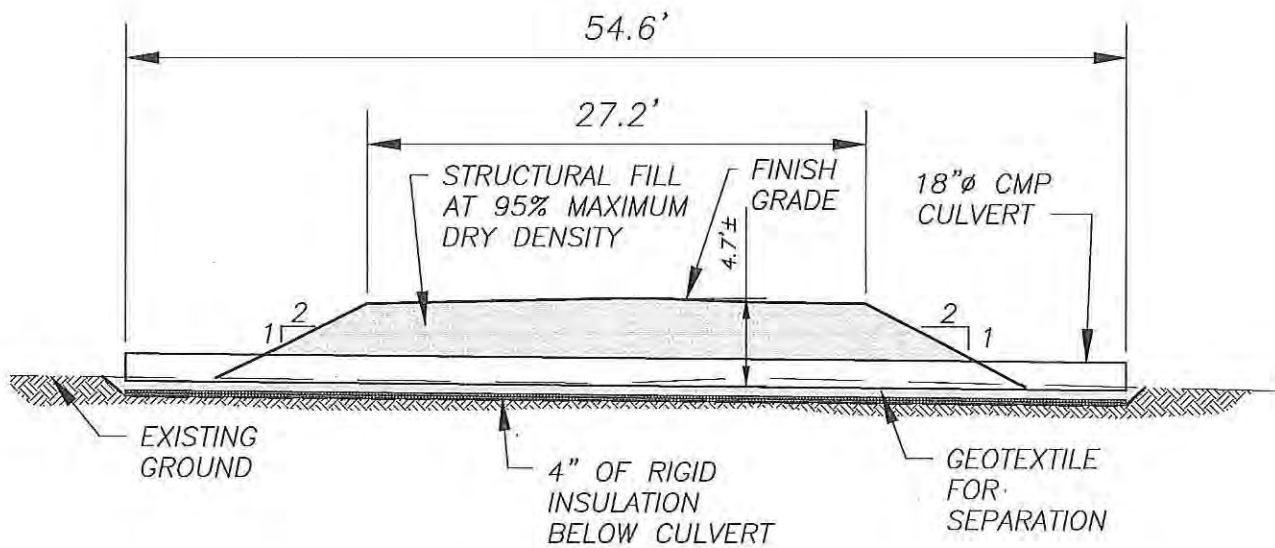


H:\jobs\14-023 Stebbins Wind Project Design (AVEC term)\CAD\DRAWINGS\14-023\_00\_fig-2-404, 1=1, 08-31-16 at 16:28 by jkk  
LAYOUT: FIG 2 culvert





1 **SECTION - ROAD**  
FIG 3 SCALE: NOT TO SCALE



2 **SECTION - CULVERT**  
FIG 3 SCALE: NOT TO SCALE

H:\jobs\14-023 Stebbins Wind Project Design (AVEC term)\CAD\DRAWINGS\14-023\_DO\_fig-2-404, 1=1, 08-08-16 at 12:59 by jkk LAYOUT: FIG 3

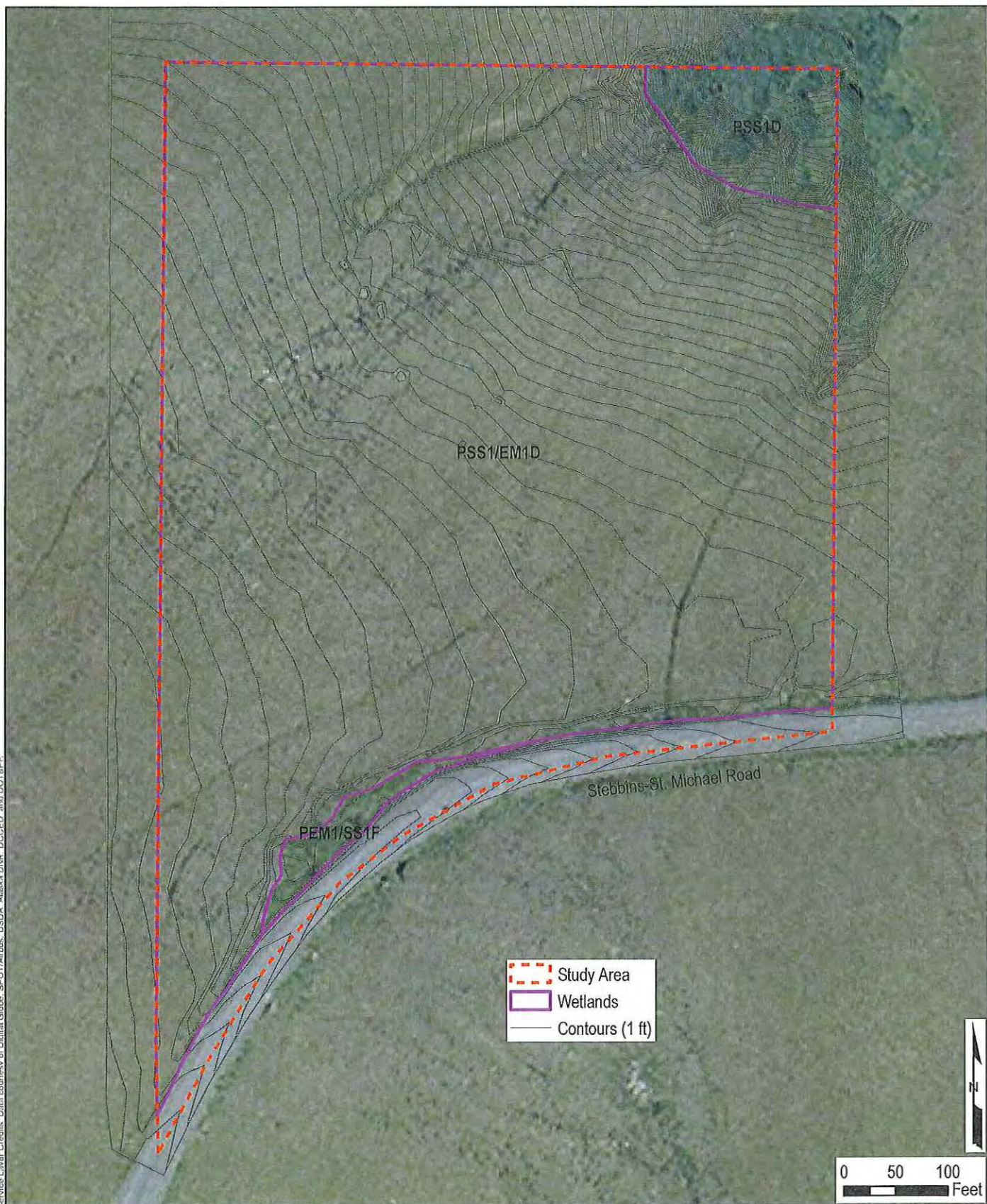


H:\jbs14-023 Stebbins Wind Project Design (AVEC term)\GIS\Stebbins\_Look\_Vic.mxd, 2/9/2016 9:03:10 AM by oneams; Coordinate System: NAD 1983 StatePlane Alaska 8 FIPS 5005 Feet  
Service Layer Credits: Data courtesy of Digital Globe, SPOT/Airbus, USDA, Alaska DNR, DCCED, and DOT&PF





H:\jobs\14-023 Stebbins Wind Project Design (AVEC term)\GIS\Stebbins\_Wetlands.mxd, 7/22/2016 8:30:26 AM by omeans, Coordinate System: NAD 1983 StatePlane Alaska 7 FIPS 5007 Feet  
 Service Layer Credits: Data courtesy of Digital Globe, SPOT/Airbus, USDA, Alaska DNR, DCCED, and DOT&PF





8/10.14.16

3130-312 AVEC



September 15, 2016

Judith Bittner  
Chief  
Alaska Office of History and Archaeology  
550 West 7<sup>th</sup> Avenue, Suite 1310  
Anchorage, Alaska 99510

**No Historic Properties Affected** *SAD*  
**Alaska State Historic Preservation Officer**  
**Date:** 10.14.16 **File No.:** 3130-312 AVEC  
**Please review: 36 CFR 800.13 / A.S. 41.35.070(d)**

RE: Stebbins Wind Project  
Alaska Historic Preservation Act  
Request for Concurrence to Proceed with the Project

Dear Ms. Bittner:

The Alaska Village Electric Cooperative (AVEC) is proposing to develop a wind energy generation facility in Stebbins, Alaska. The proposed project is located in Section 35 of Township 22S, Range 19W, of the Kateel River Meridian, and on U.S. Geological Survey Quadrangle Map St. Michael C-1 (Figure 1).

We are consulting with you to assist us in identifying historic properties that might be affected by the proposed project and determine its potential effect. Consultation is being conducted under the Alaska Historic Preservation Act. HDL Engineering Consultants is conducting this review on AVEC's behalf.

#### Project Description

Construction of the wind power facility would consist of the following (Figures 2 - 4):

- One (1) wind turbine with a hub height of 50 meters (164 feet) and rotor diameter of 52 meters (171 feet)
- 246-foot gravel access road and 10,000 square foot wind tower pad
- Buried power supply line from the wind turbine pad to the existing Stebbins-St. Michael intertie
- Generator hub lighting per Federal Aviation Administration specifications

#### Area of Potential Effect (APE)

The Area of Potential Effect (APE) for direct effects consists of the direct project footprint depicted on Figure 2. Due to the remote location of the proposed project, no APE for indirect or visual impacts has been developed.

#### Identification Efforts

On August 28, 2012, Cultural Resource Consultants, LLC (CRC) completed a review of the Alaska Heritage Resources Survey. No known cultural, historic, prehistoric, or archaeological sites have been identified within the APE.

CIVIL  
ENGINEERING  
  
GEOTECHNICAL  
ENGINEERING  
  
TRANSPORTATION  
ENGINEERING  
  
ENVIRONMENTAL  
SERVICES  
  
PLANNING  
  
SURVEYING  
& MAPPING  
  
CONSTRUCTION  
ADMINISTRATION  
  
MATERIAL  
TESTING  
  
RIGHT-OF-WAY  
SERVICES

Anchorage  
Mat-Su  
Kenai Peninsula

3335 Arctic Boulevard, Suite 100, Anchorage 99503  
202 West Elmwood Avenue, Palmer 99645  
10735 Spur Highway, Suite 1B, Kenai 99611

907.564.2120  
907.746.5230  
907.283.2051

7012.01225

**Finding of Effect**


Based on the research conducted by CRC, AVEC finds that the proposed project would have no direct effect on known historic properties.

**Consultation Efforts**

The following parties are being consulted for this project in addition to SHPO: Stebbins Native Corporation, Calista Corporation, Stebbins Community Association, and Native Village of St. Michael.

We respectfully request concurrence with our finding of no historic properties affected. If you have questions or comments related to this project, please contact me by telephone at 907-564-2143, or by email at [omeans@hdlalaska.com](mailto:omeans@hdlalaska.com).

Sincerely,



Owen Means  
Environmental Specialist  
HDL Engineering Consultants

**Enclosures:**

- Figure 1: Project Location
- Figure 2: Area of Potential Effect
- Figure 3: Section View – Road
- Figure 4: Section View – Pad
- Report: *Known Archaeological and Historical Sites in the Stebbins Area* (August 2012)

**Electronic cc:**

Onya Stein, AVEC, Project Manager