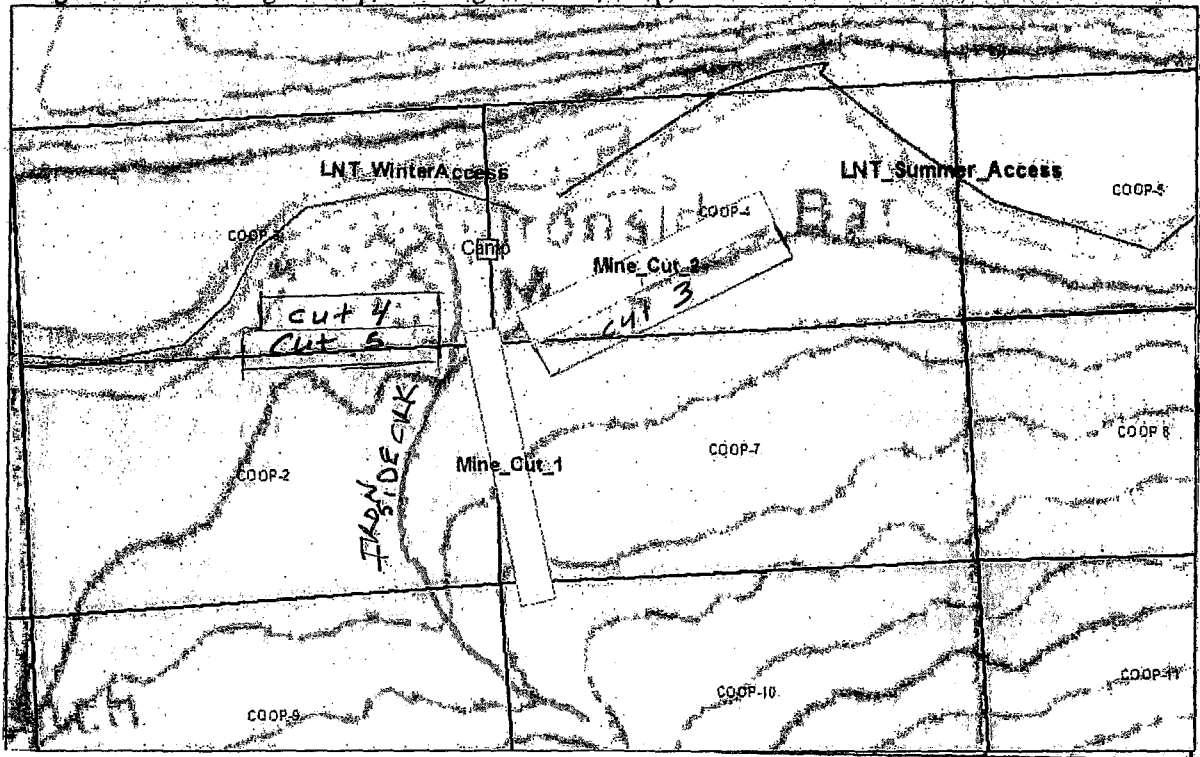


Figure 1: Winter and Summer Access routes proposed by LNT Mining. Summer access will occur along the South Fork Koyukuk and Winter access will occur overland from the Chapman Creek trail.

POA-2012-197, Ironside Creek
 Permittee: Lynn Lythgoe III, LNT MINING LLC
 Location: Secs. 13, 14, 15, 16, 21, 22, 25 T. 25 N., R. 14 W.
 Secs. 18 & 19, T. 25 N., R. 13 W.
 Lat. 66.985 N., Long. -150. 6248

Figure 2: LNT Mining site map, including mine cuts, camp, winter and summer access, and claim outlines.



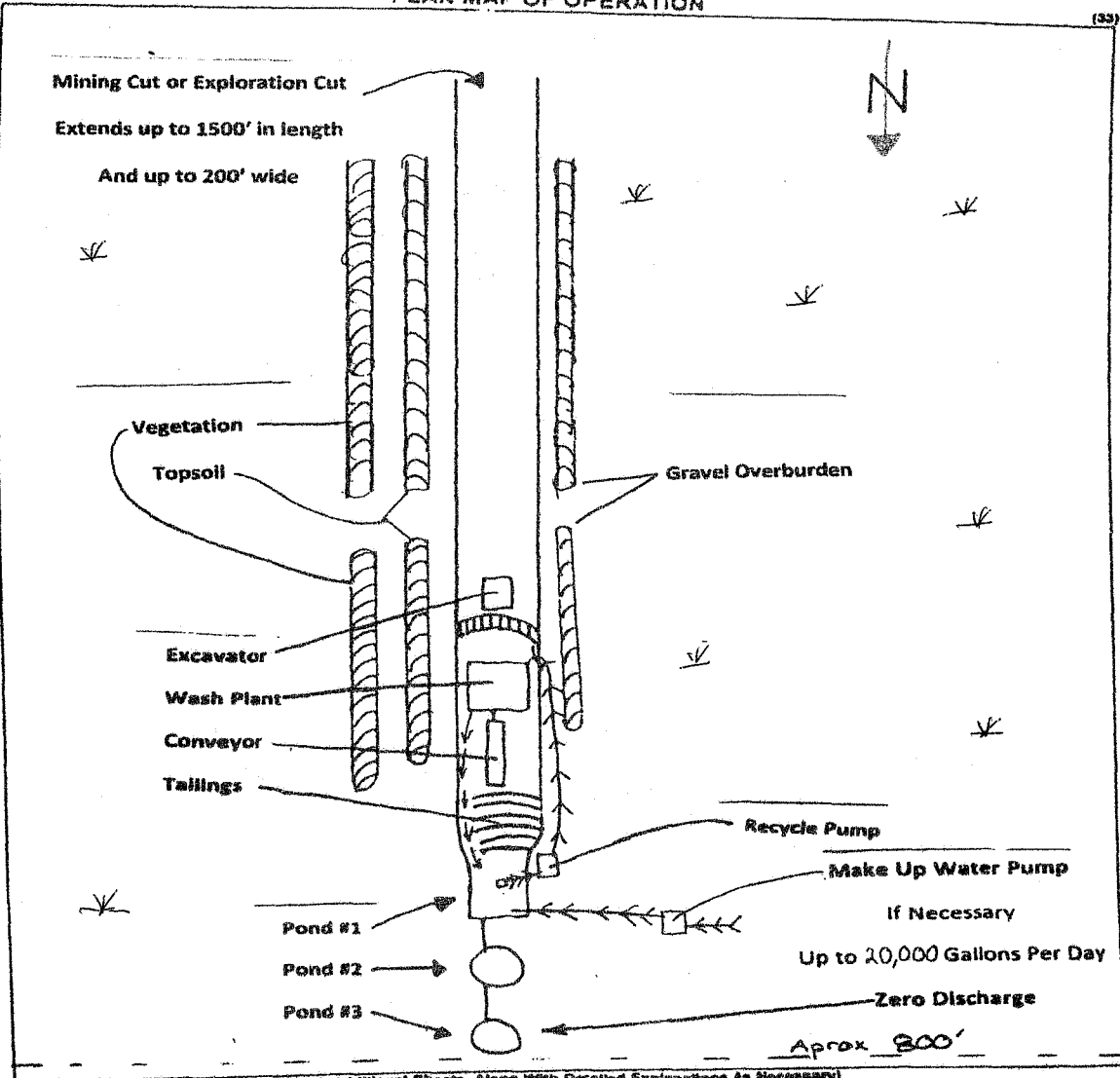
*Estimated 270,000 cubic yards over 5 year time frame.

N ↑

POA-2012-197, Ironside Creek
Permittee: Lynn Lythgoe III, LNT MINING LLC
Location: Secs. 13, 14, 15, 16, 21, 22, 25 T. 25 N., R. 14 W.
Secs. 18 & 19, T. 25 N., R. 13 W.
Lat. 66.985 N., Long. -150. 6248

LNT Mining LLC

PLAN MAP OF OPERATION



(Attach Additional Sheets, Along With Detailed Explanations As Necessary)
 PLEASE REVIEW THE SKETCH SHEET CHECKLIST TO ENSURE THAT ALL REQUIRED ITEMS ARE INCLUDED

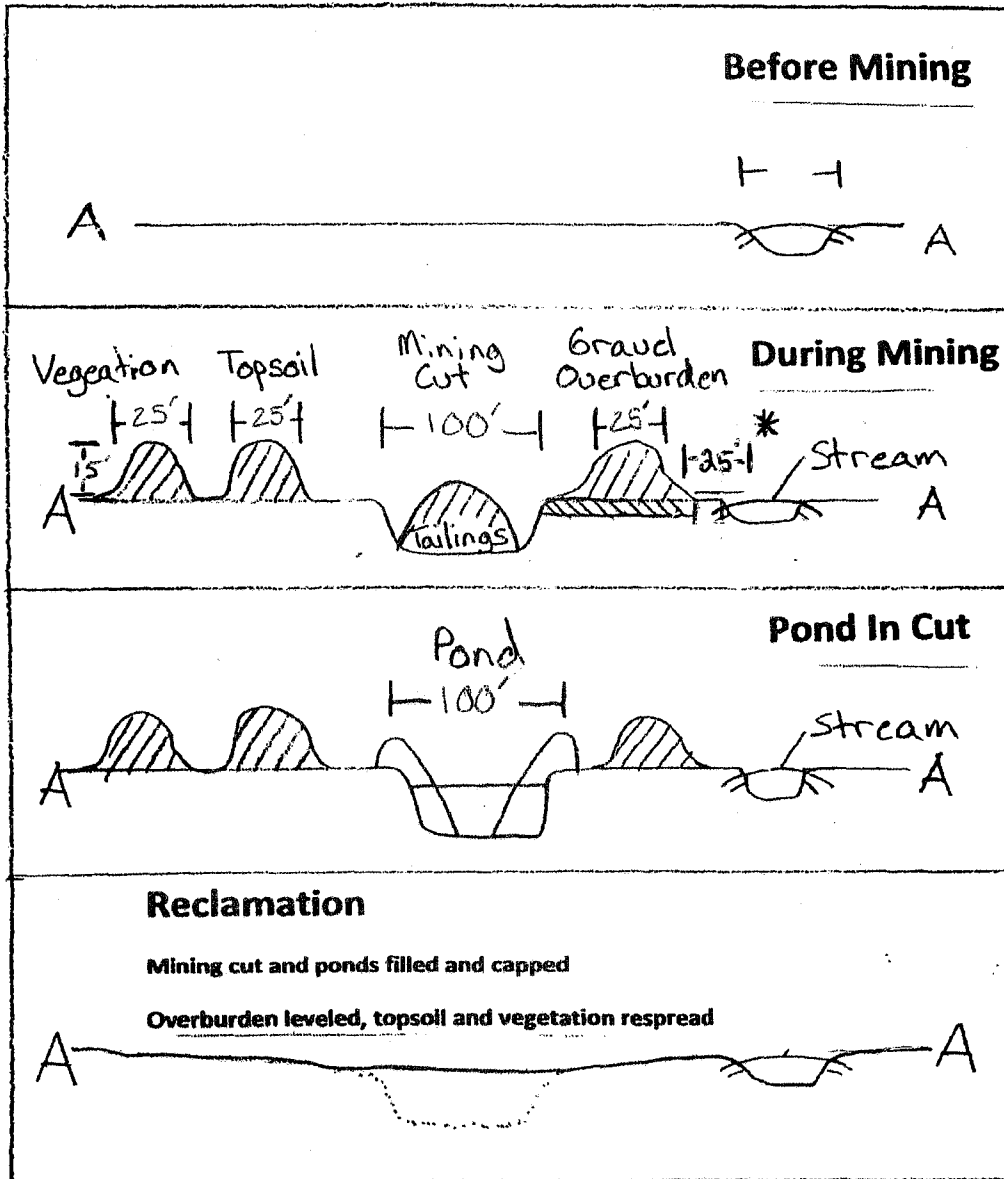
INCOMPLETE SKETCH SHEETS WILL CAUSE THE ENTIRE APPLICATION TO BE RETURNED

↘ = wetlands

POA-2012-197, Ironside Creek
 Permittee: Lynn Lythgoe III, LNT MINING LLC
 Location: Secs. 13, 14, 15, 16, 21, 22, 25 T. 25 N., R. 14 W.
 Secs. 18 & 19, T. 25 N., R. 13 W.
 Lat. 66.985 N., Long. -150.6248

LNT Mining LLC

PLAN OF OPERATION CROSS SECTION



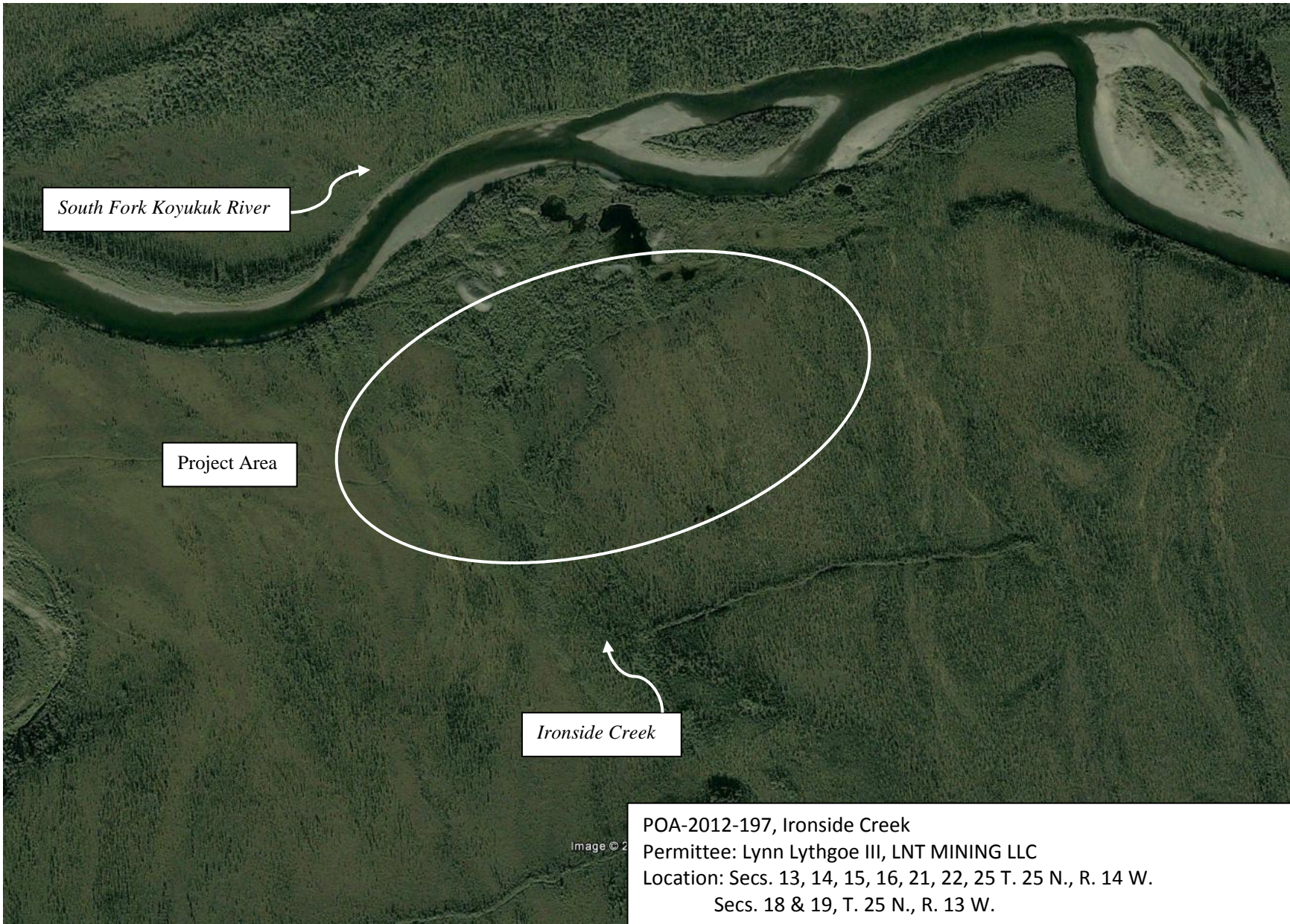
*Note - Disturbance from small creeks will be set back 25 feet.

POA-2012-197, Ironside Creek
 Permittee: Lynn Lythgoe III, LNT MINING LLC
 Location: Secs. 13, 14, 15, 16, 21, 22, 25 T. 25 N., R. 14 W.
 Secs. 18 & 19, T. 25 N., R. 13 W.
 Lat. 66.985 N., Long. -150. 6248

CROSS SECTION VIEW

p 4 of 5

3/11/13



South Fork Koyukuk River

Project Area

Ironside Creek

POA-2012-197, Ironside Creek
Permittee: Lynn Lythgoe III, LNT MINING LLC
Location: Secs. 13, 14, 15, 16, 21, 22, 25 T. 25 N., R. 14 W.
Secs. 18 & 19, T. 25 N., R. 13 W.
Lat. 66.985 N., Long. -150. 6248

GOOGLE PHOTO p 5 of 5 3/11/13

