






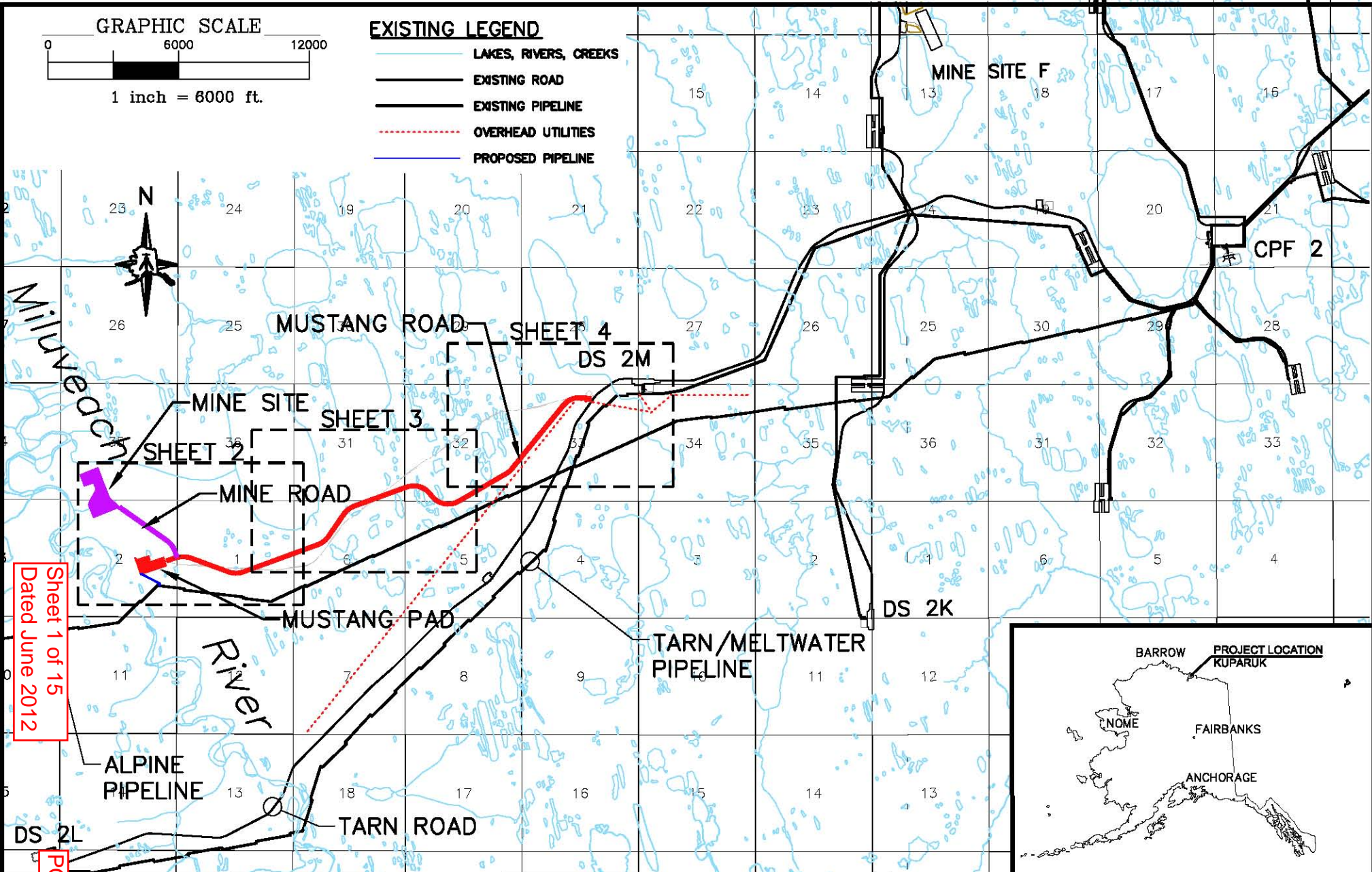
EXISTING LEGEND

-  LAKES, RIVERS, CREEKS
-  EXISTING ROAD
-  EXISTING PIPELINE
-  OVERHEAD UTILITIES
-  PROPOSED PIPELINE

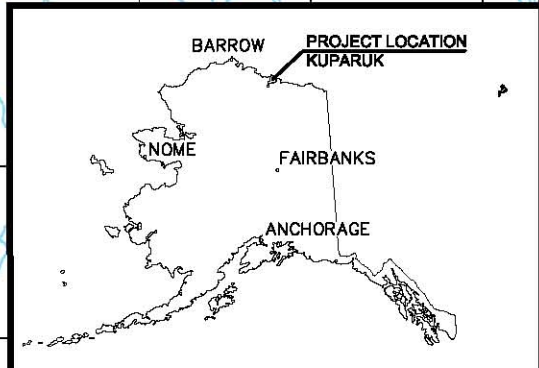


Sheet 1 of 15
 Dated June 2012

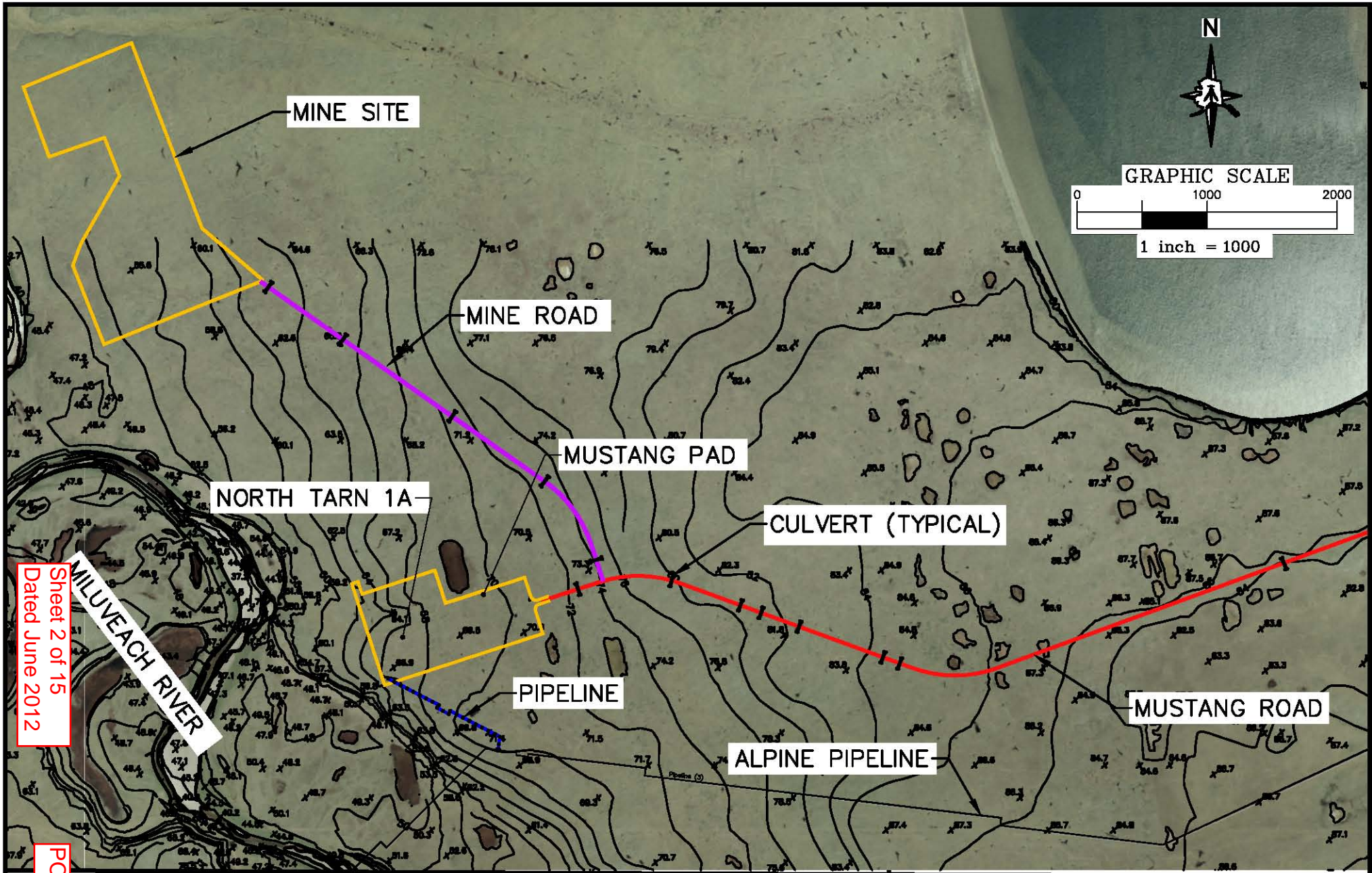
POA-2012-236



MUSTANG DEVELOPMENT
VICINITY/LOCATION MAP



Applicant: BROOKS RANGE PETROLEUM CORPORATION
 Project: MUSTANG DEVELOPMENT
 Location: T11N, R7E: T11N R8E: T10N R7E: T10N R8E
 Waterbody: MILUVEACH RIVER
 Sheet: 1 of 14
 Date: JULY 2012



Sheet 2 of 15
Dated June 2012

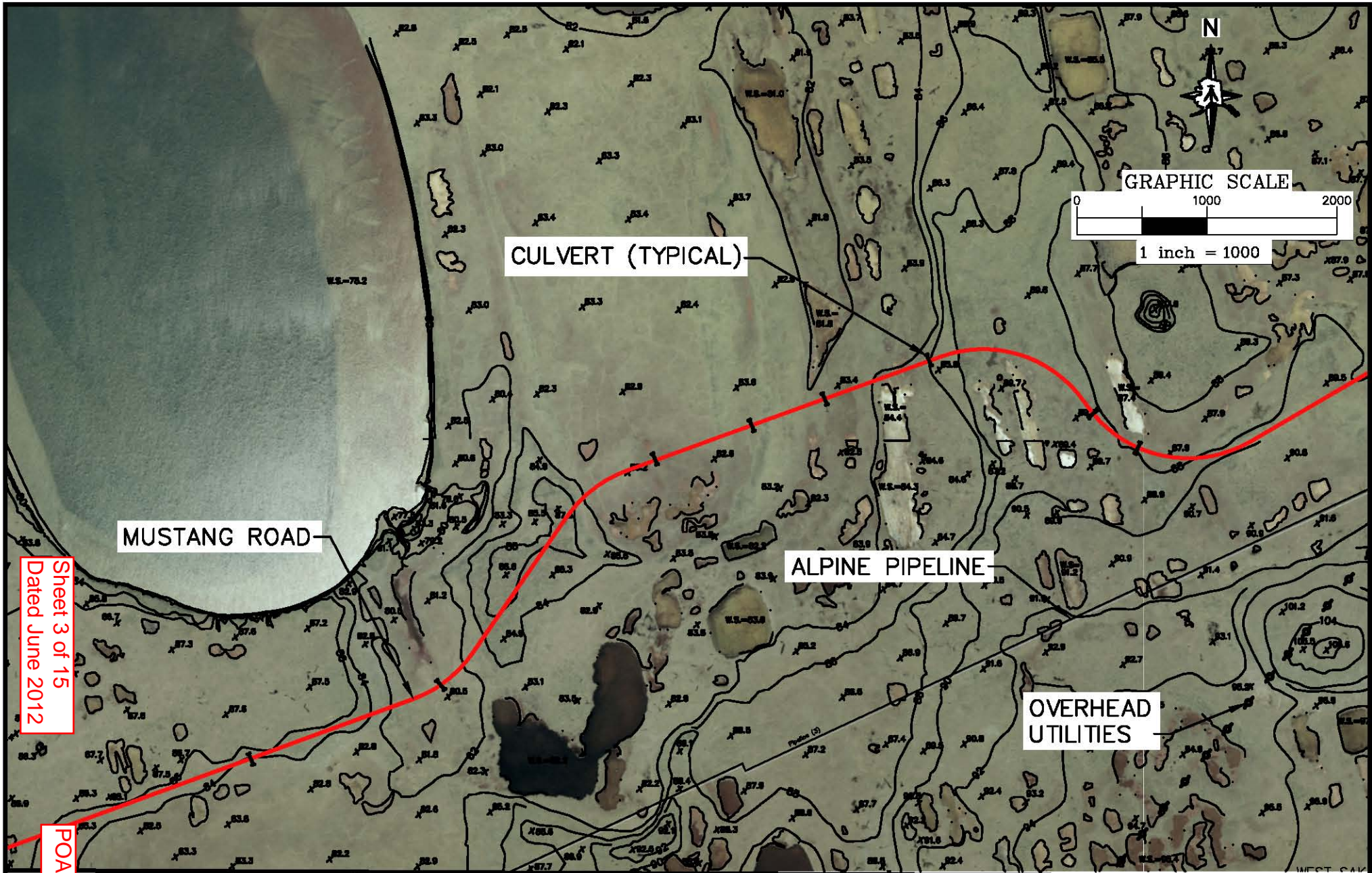
MILUVEACH RIVER



MUSTANG DEVELOPMENT
PLAN VIEW ROAD (WEST)

Applicant: BROOKS RANGE PETROLEUM CORPORATION
 Project: MUSTANG DEVELOPMENT
 Location: T11N, R7E: T11N R8E: T10N R7E: T10N R8E
 Waterbody: MILUVEACH RIVER
 Sheet: 2 of 14
 Date: JULY 2012

POA-2012-236



Sheet 3 of 15
Dated June 2012

POA-2012-236



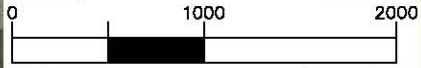
MUSTANG DEVELOPMENT

PLAN VIEW ROAD (CENTER)

Applicant: BROOKS RANGE PETROLEUM CORPORATION
 Project: MUSTANG DEVELOPMENT
 Location: T11N, R7E: T11N R8E: T10N R7E: T10N R8E
 Waterbody: MILUVEACH RIVER
 Sheet: 3 of 14
 Date: JULY 2012



GRAPHIC SCALE



1 inch = 1000

TARN ROAD

DS 2M

TARN/MELTWATER PIPELINE

CULVERT (TYPICAL)

OVERHEAD UTILITIES

MUSTANG ROAD

ALPINE PIPELINE

Sheet 4 of 15
Dated June 2012

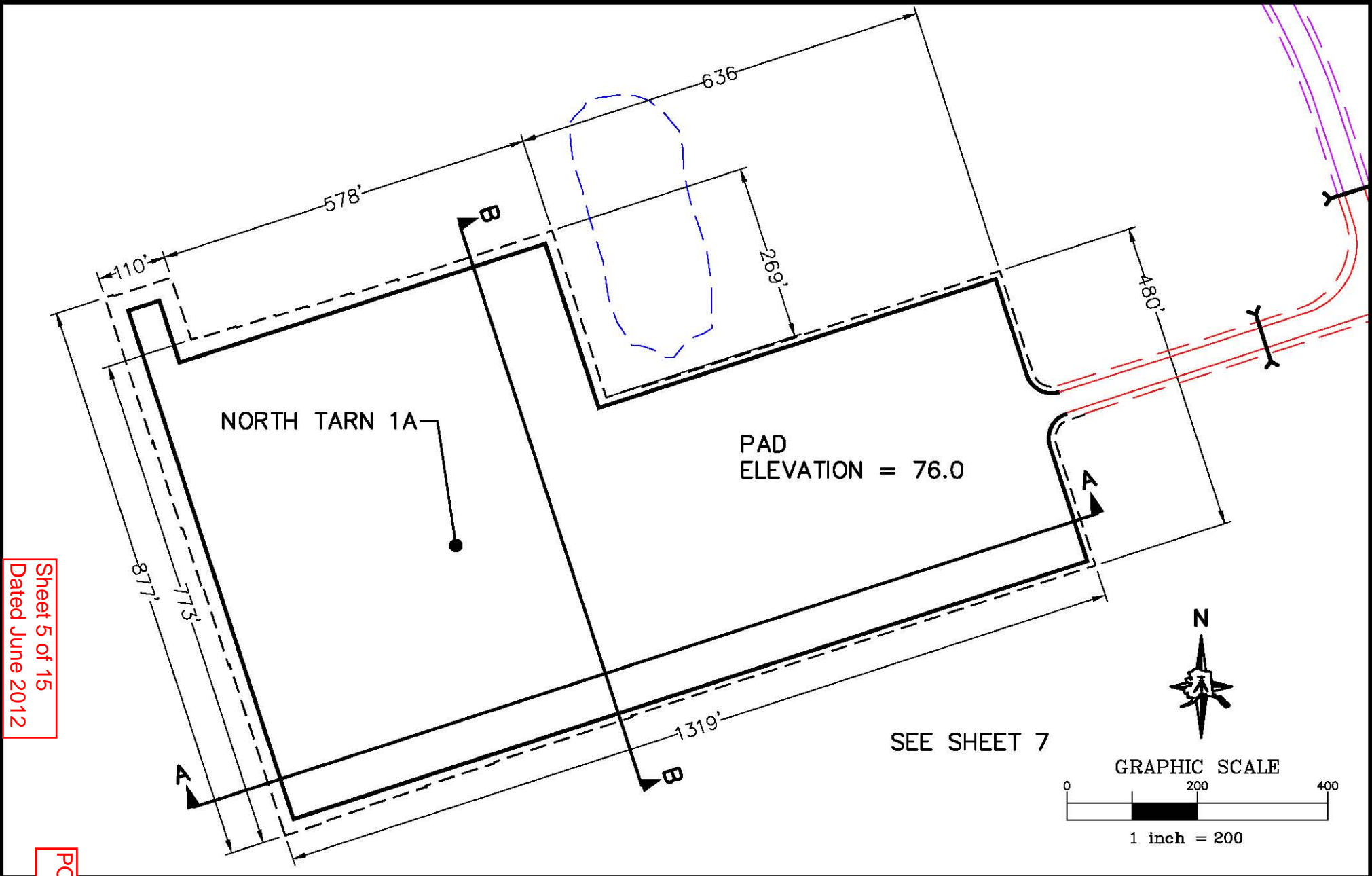
POA-2012-236



MUSTANG DEVELOPMENT

PLAN VIEW ROAD (EAST)

Applicant: BROOKS RANGE PETROLEUM CORPORATION
Project: MUSTANG DEVELOPMENT
Location: T11N, R7E: T11N R8E: T10N R7E: T10N R8E
Waterbody: MILUVEACH RIVER
Sheet: 4 of 14
Date: JULY 2012



Sheet 5 of 15
Dated June 2012

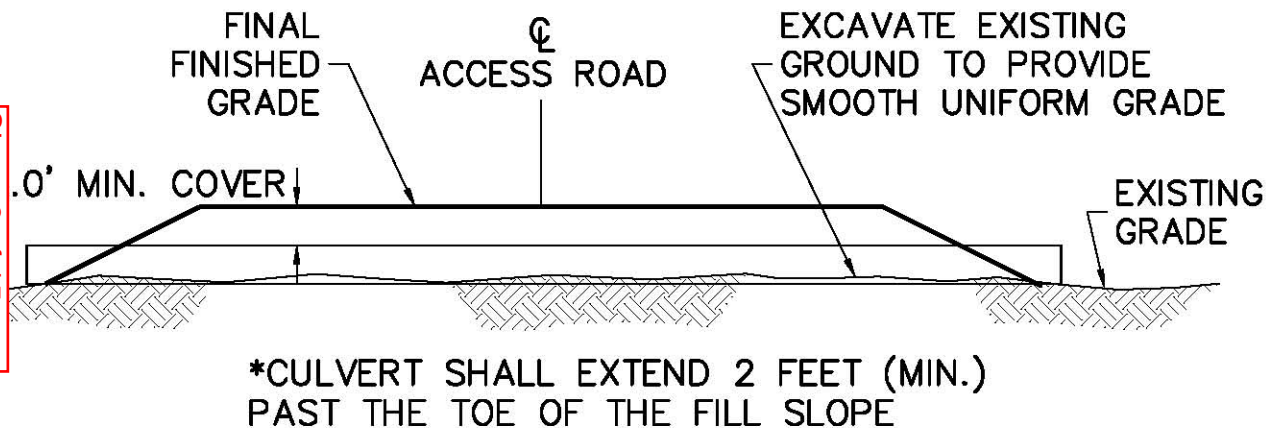
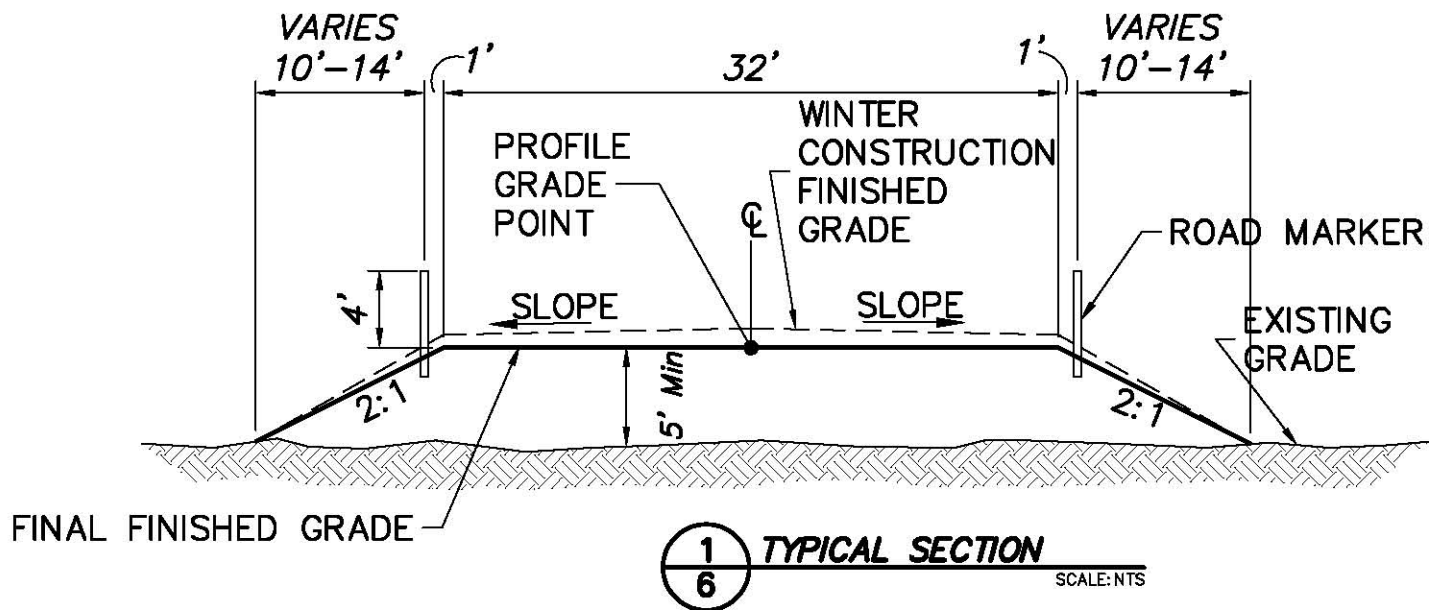
POA-2012-236



MUSTANG DEVELOPMENT

PLAN VIEW PAD MAP

Applicant: BROOKS RANGE PETROLEUM CORPORATION
 Project: MUSTANG DEVELOPMENT
 Location: T11N, R7E: T11N R8E: T10N R7E: T10N R8E
 Waterbody: MILUVEACH RIVER
 Sheet: 5 of 14
 Date: JULY 2012



Sheet 6 of 15
Dated June 2012

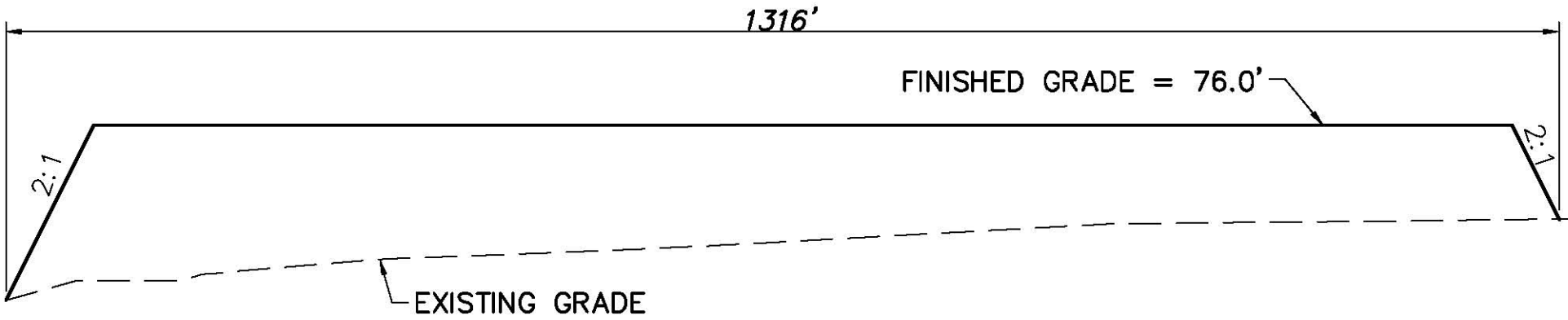
POA-2012-236



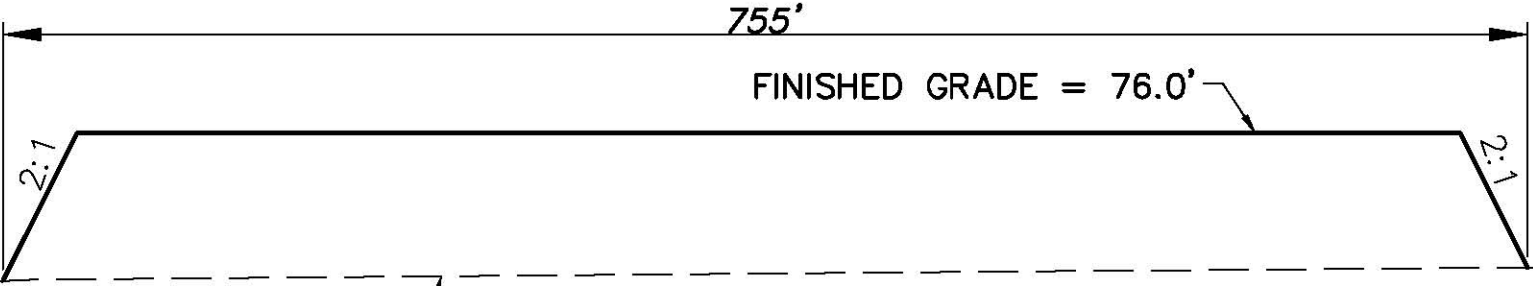
MUSTANG DEVELOPMENT

ROAD SECTION/CULVERT DETAIL

Applicant: BROOKS RANGE PETROLEUM CORPORATION
 Project: MUSTANG DEVELOPMENT
 Location: T11N, R7E: T11N R8E: T10N R7E: T10N R8E
 Waterbody: MILUVEACH RIVER
 Sheet: 6 of 14
 Date: JULY 2012



1
7 SECTION AA
SCALE: NTS



2
7 SECTION BB
SCALE: NTS

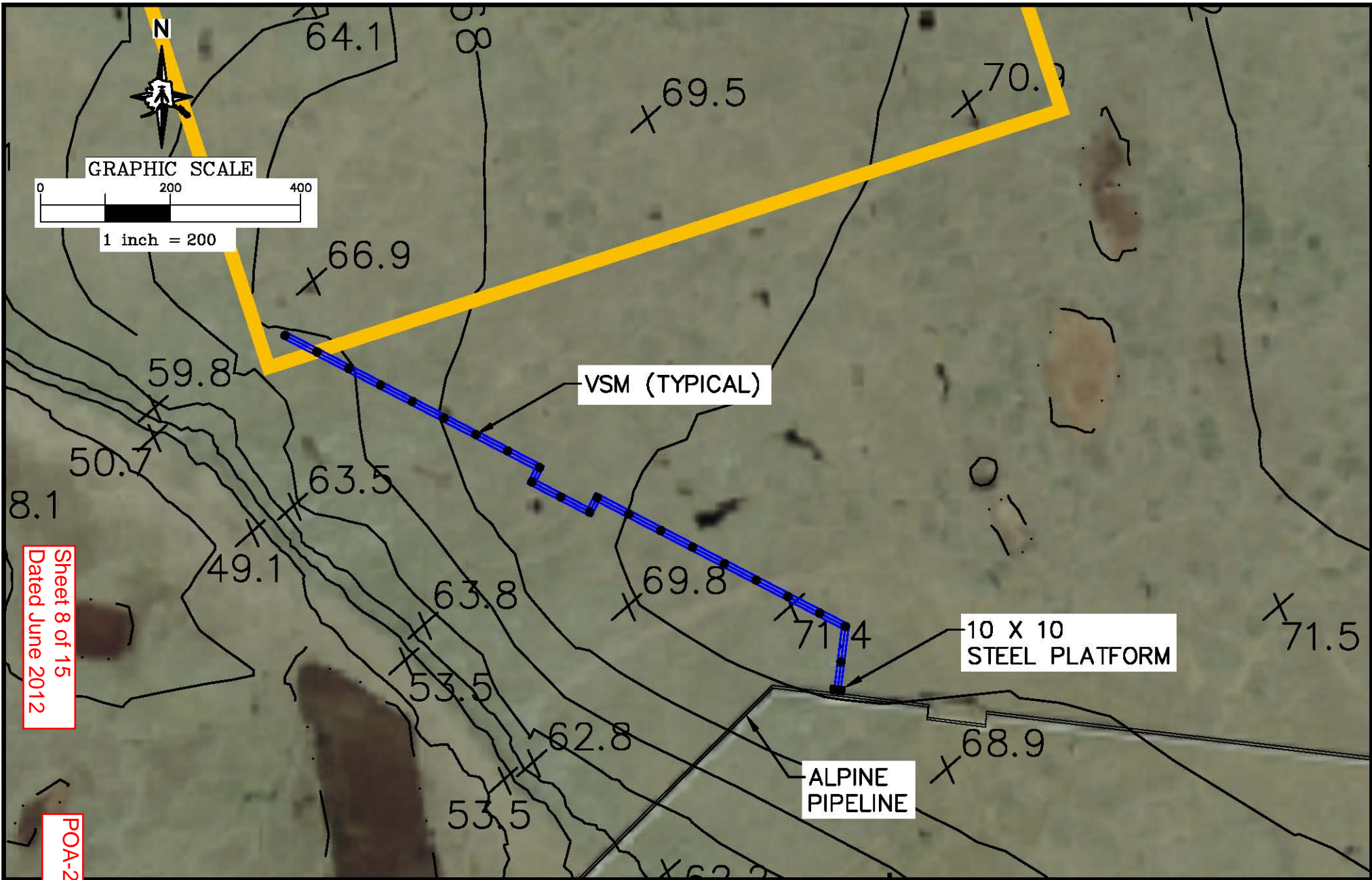
Sheet 7 of 15
Dated June 2012

POA-2012-236



MUSTANG DEVELOPMENT
TYPICAL PAD SECTIONS

Applicant: BROOKS RANGE PETROLEUM CORPORATION
 Project: MUSTANG DEVELOPMENT
 Location: T11N, R7E: T11N R8E: T10N R7E: T10N R8E
 Waterbody: MILUVEACH RIVER
 Sheet: 7 of 14
 Date: JULY 2012



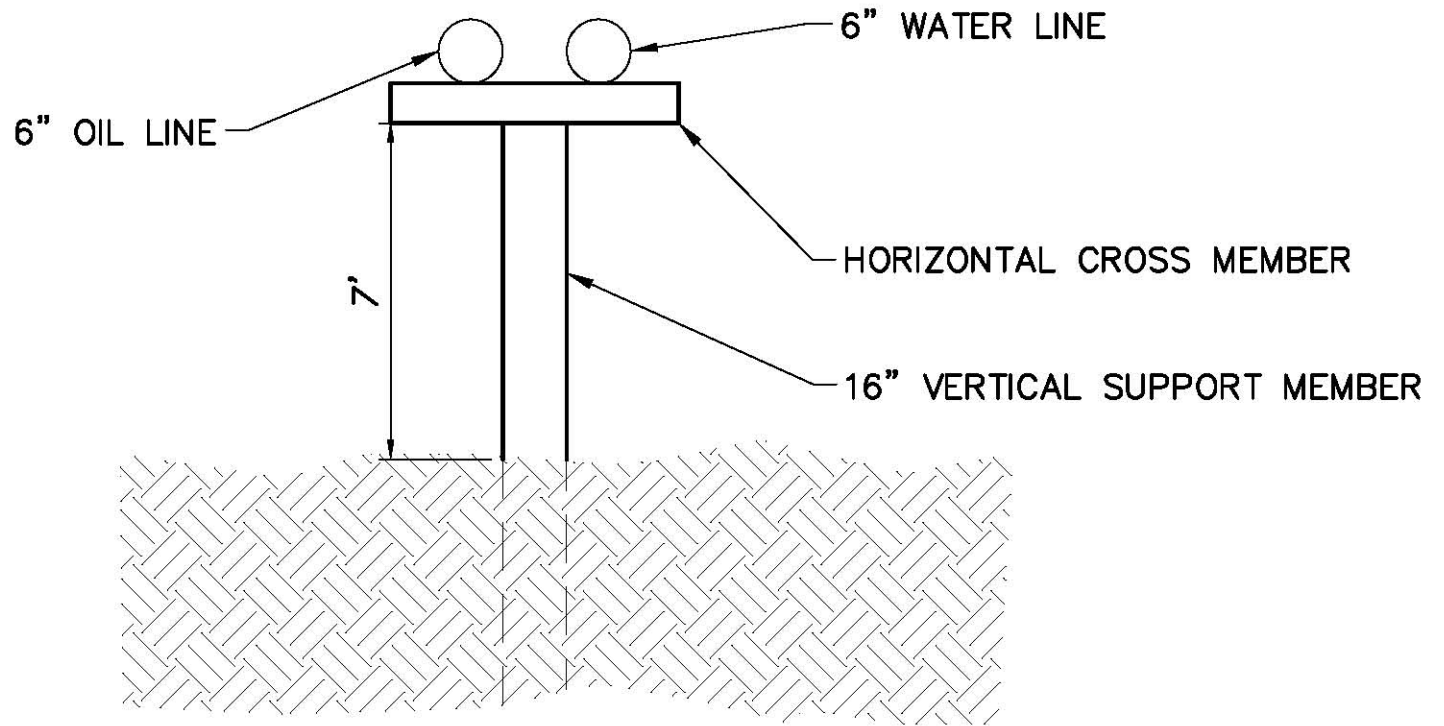
Sheet 8 of 15
Dated June 2012

POA-2012-236



MUSTANG DEVELOPMENT
PIPELINE ROUTE DETAIL

Applicant: BROOKS RANGE PETROLEUM CORPORATION
Project: MUSTANG DEVELOPMENT
Location: T11N, R7E: T11N R8E: T10N R7E: T10N R8E
Waterbody: MILUVEACH RIVER
Sheet: 8 of 14
Date: JULY 2012



1
8
PIPELINE SUPPORT TYPICAL
 SCALE: NTS

Sheet 9 of 15
 Dated June 2012

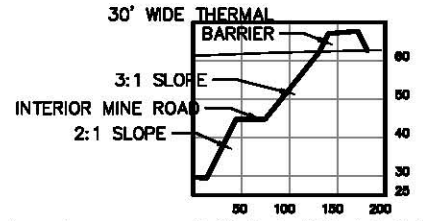
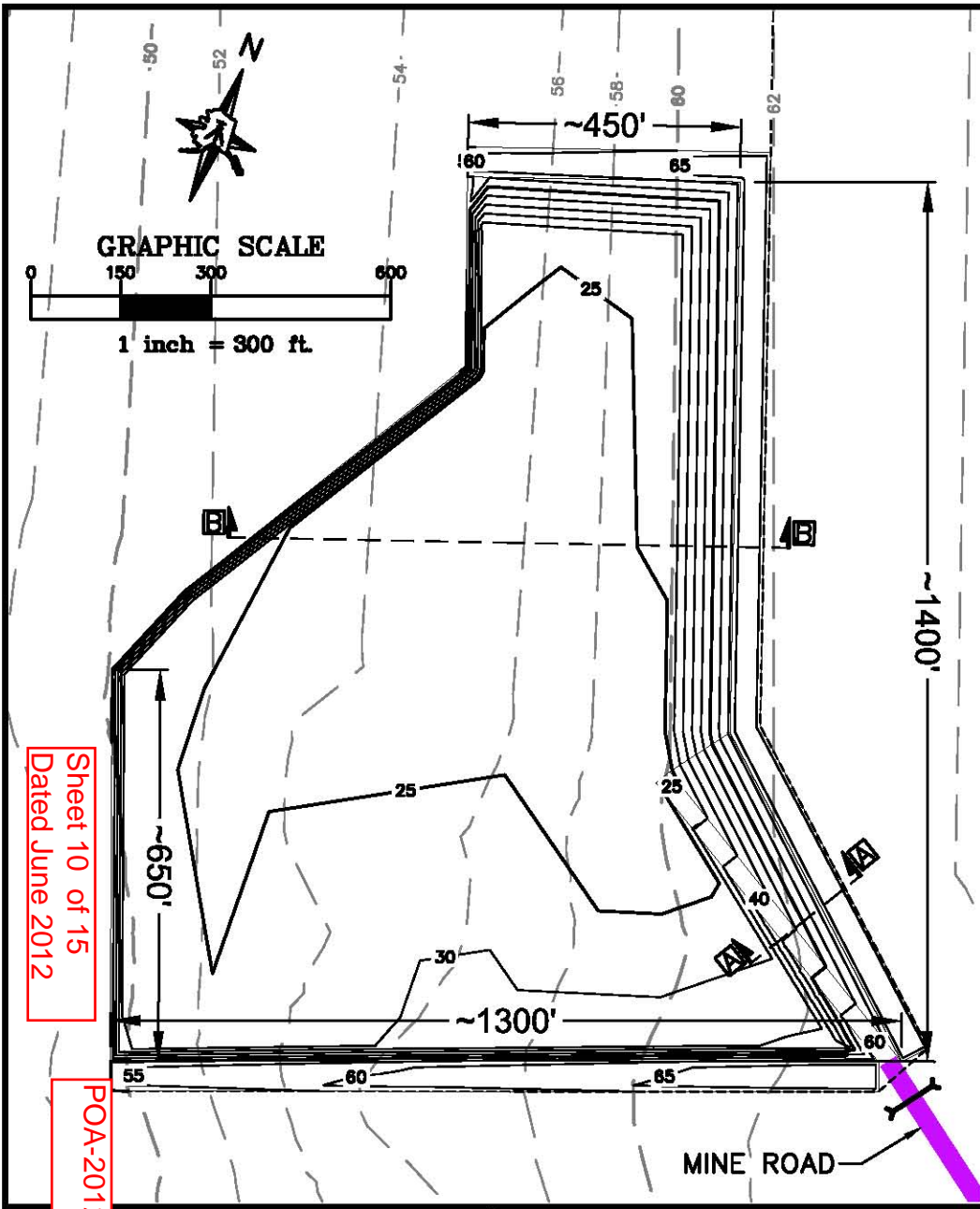
POA-2012-236



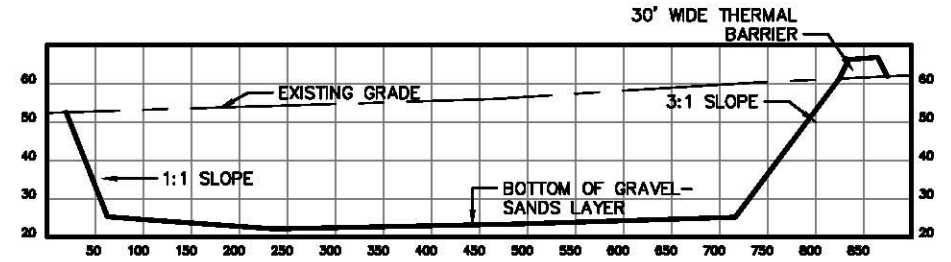
MUSTANG DEVELOPMENT

PIPE SUPPORT TYPICAL

Applicant: BROOKS RANGE PETROLEUM CORPORATION
 Project: MUSTANG DEVELOPMENT
 Location: T11N, R7E: T11N R8E: T10N R7E: T10N R8E
 Waterbody: MILUVEACH RIVER
 Sheet: 9 of 14
 Date: JULY 2012



SECTION A-A - MINE INTERIOR ROAD SECTION



SECTION B-B - PRIMARY PHASE MINE SECTION

Sheet 10 of 15
Dated June 2012

POA-2012-236

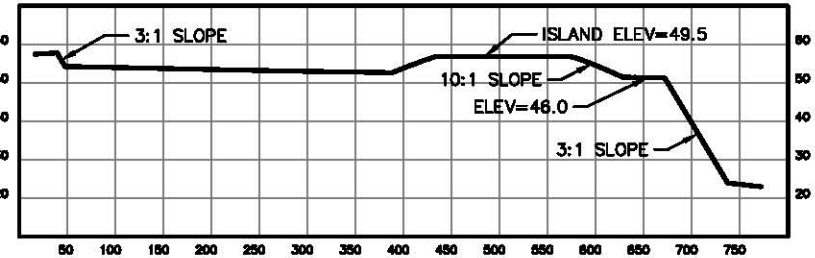


MUSTANG DEVELOPMENT

PRIMARY PHASE MINING PLAN

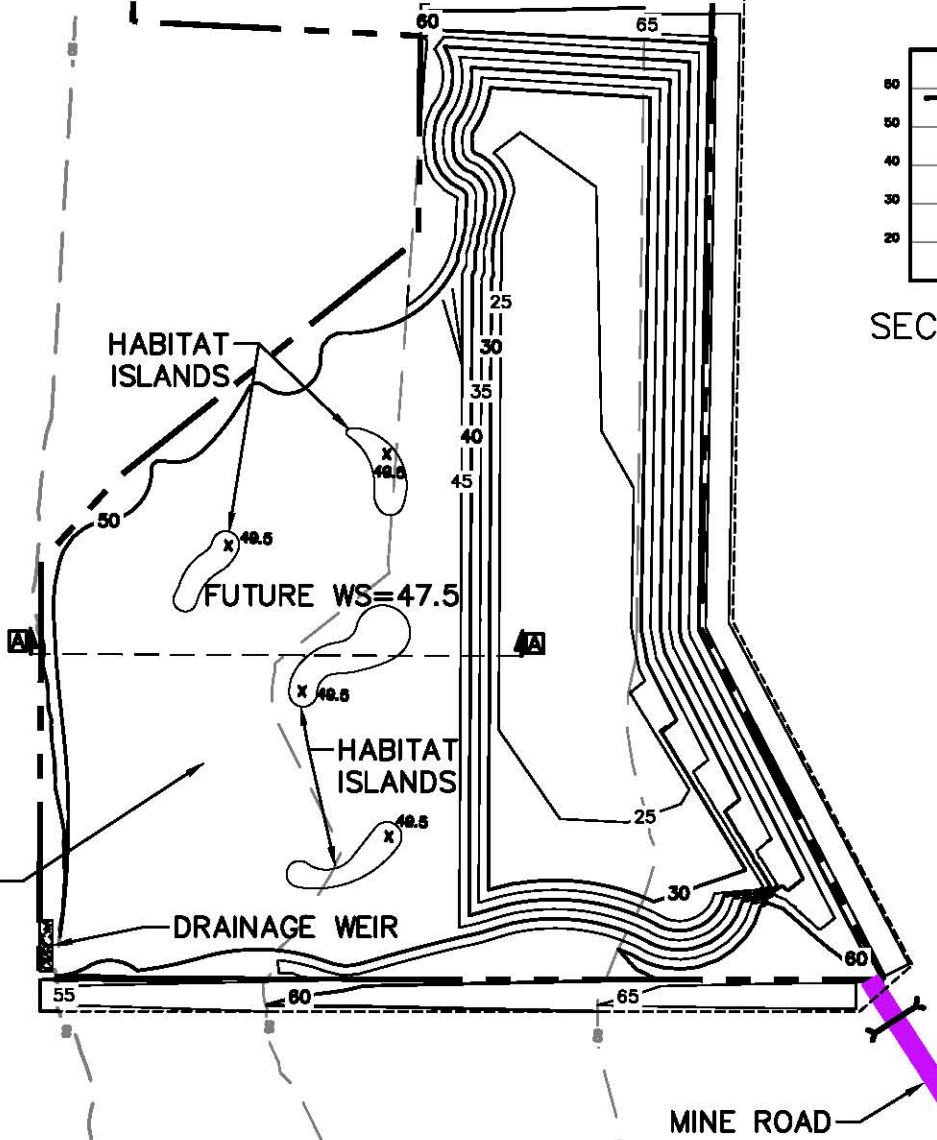
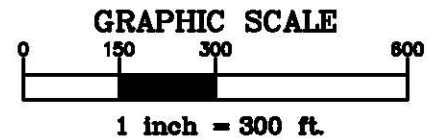
Applicant: BROOKS RANGE PETROLEUM
 Project: MUSTANG DEVELOPMENT
 Location: T11N, R7E: T11N, R8E: T10N, R7E, T10N, R8E
 Waterbody: MILUVEACH RIVER
 Sheet: 10 of 14
 Date: JUNE 2012

CONTINGENT MINING PHASE



SECTION A-A - LITORAL HABITAT SECTION

SCALE: NTS



Sheet 11 of 15
Dated June 2012

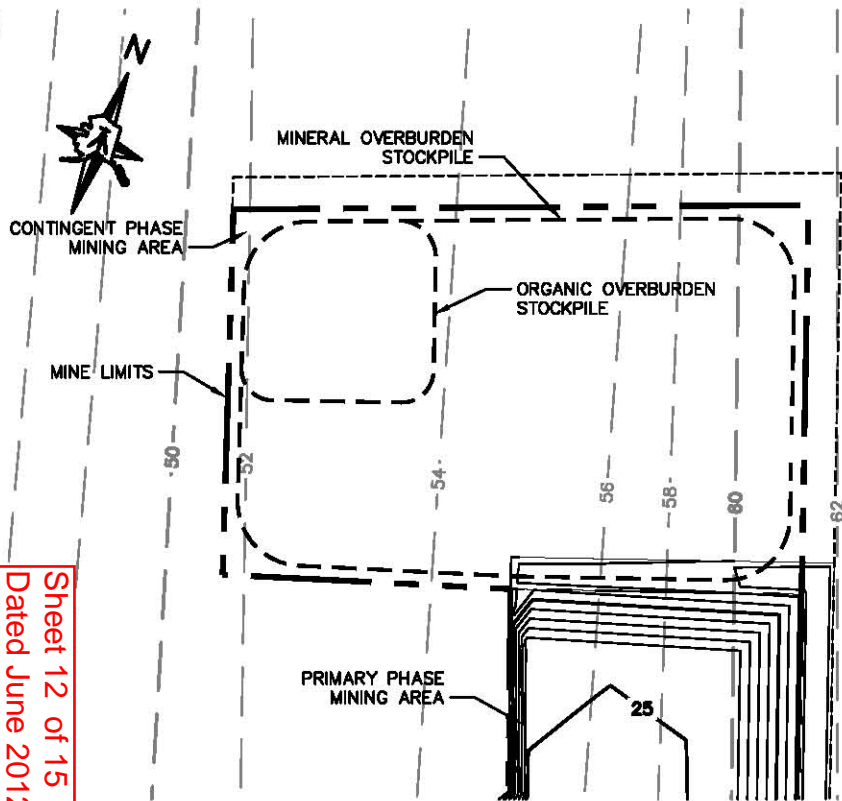
POA-2012-236



MUSTANG DEVELOPMENT

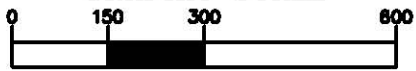
PRIMARY PHASE REHABILITATION PLAN

Applicant: BROOKS RANGE PETROLEUM CORPORATION
 Project: MUSTANG DEVELOPMENT
 Location: T11N, R7E: T11N, R8E: T10N, R7E, T10N, R8E
 Waterbody: MILUVEACH RIVER
 Sheet: 11 of 14
 Date: JUNE 2012

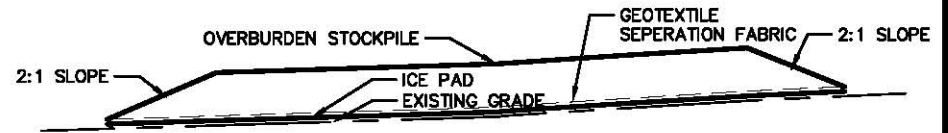


Sheet 12 of 15
Dated June 2012

GRAPHIC SCALE



1 inch = 300 ft.



STOCKPILE TYPICAL SECTION

NTS

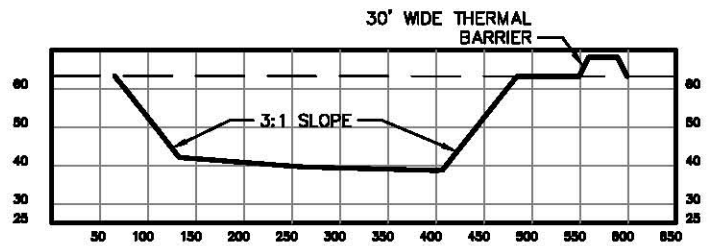
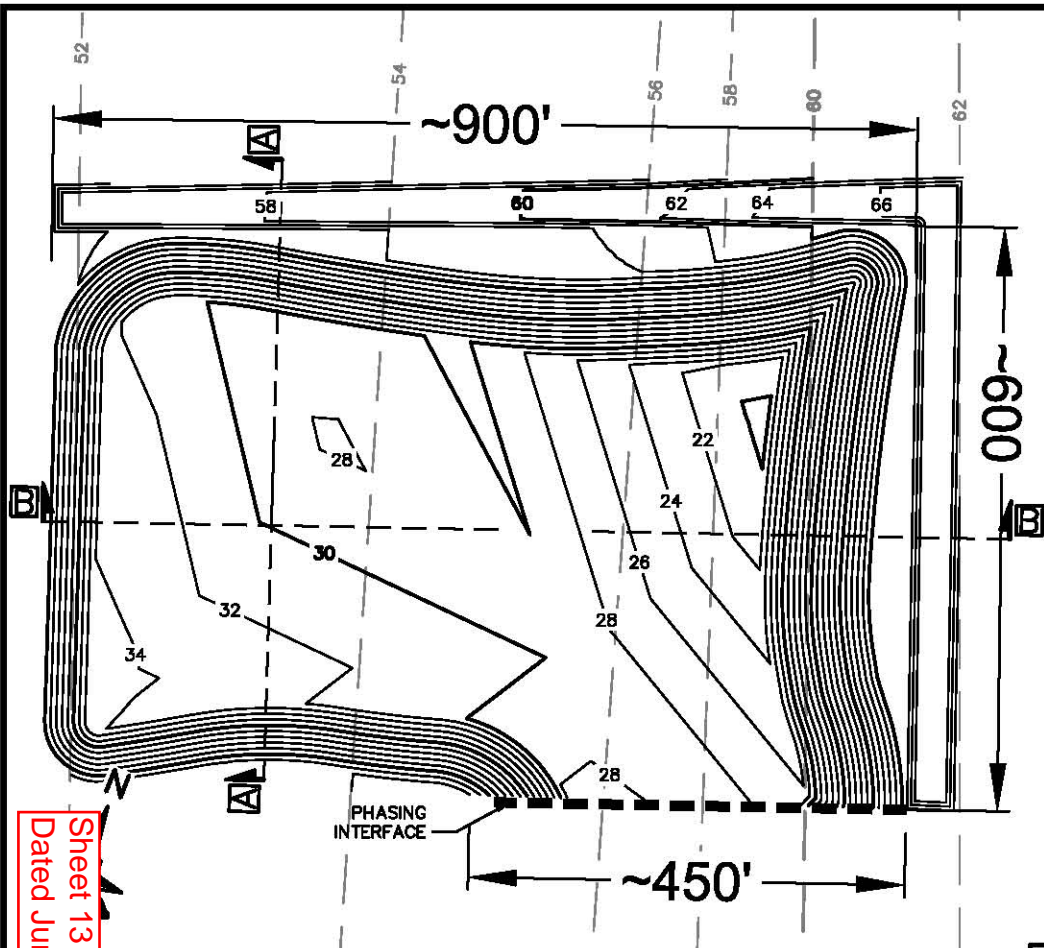
POA-2012-236



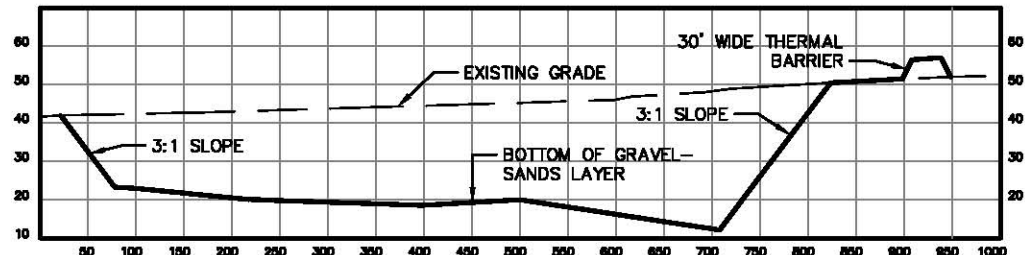
MUSTANG DEVELOPMENT

PRIMARY PHASE OVERBURDEN STOCKPILE PLAN

Applicant: BROOKS RANGE PETROLEUM
 Project: MUSTANG DEVELOPMENT
 Location: T11N, R7E: T11N, R8E: T10N, R7E, T10N, R8E
 Waterbody: MILUVEACH RIVER
 Sheet: 12 of 14
 Date: JUNE 2012

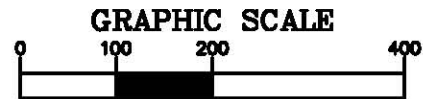


SECTION A-A
CONTINGENT PHASE MINE SECTION



SECTION B-B
CONTINGENT PHASE MINE SECTION

Sheet 13 of 15
Dated June 2012



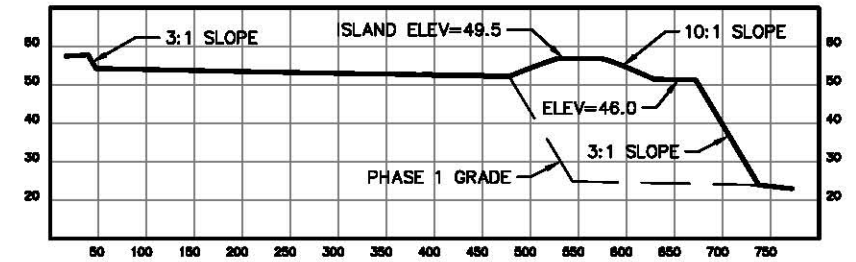
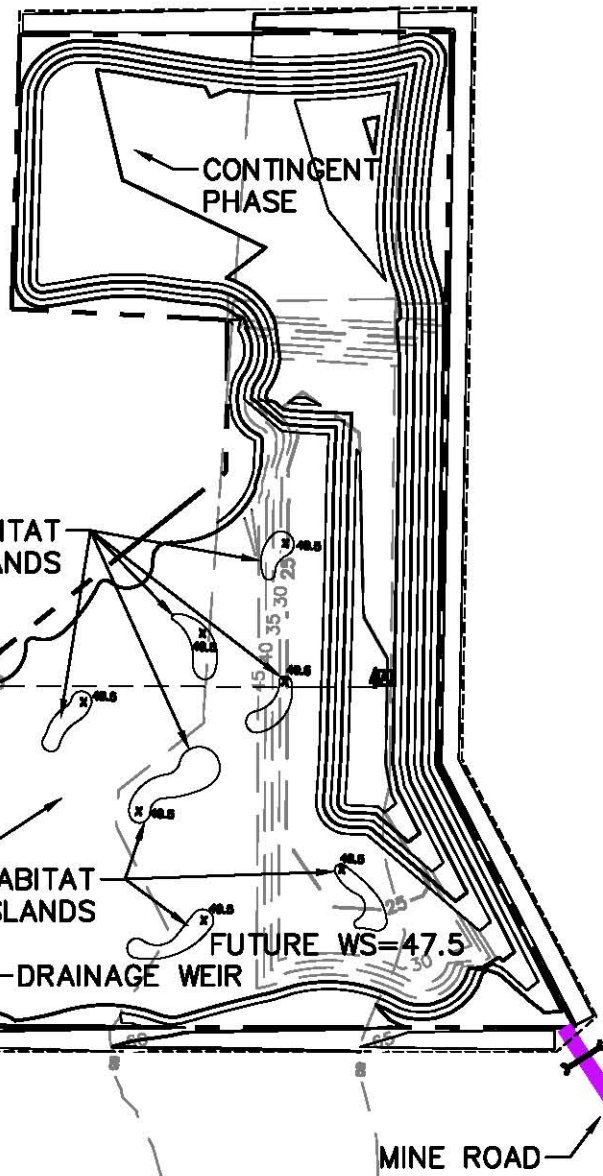
1 inch = 200 ft.

POA-2012-236



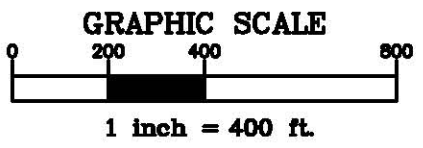
MUSTANG DEVELOPMENT
CONTINGENT PHASE MINING PLAN

Applicant: BROOKS RANGE PETROLEUM COMPANY
 Project: MUSTANG DEVELOPMENT
 Location: T11N, R7E: T11N, R8E: T10N, R7E, T10N, R8E
 Waterbody: MILUVEACH RIVER
 Sheet: 13 of 14
 Date: JUNE 2012



SECTION A-A - LITORAL HABITAT SECTION

SCALE: NTS



Sheet 14 of 15
Dated June 2012

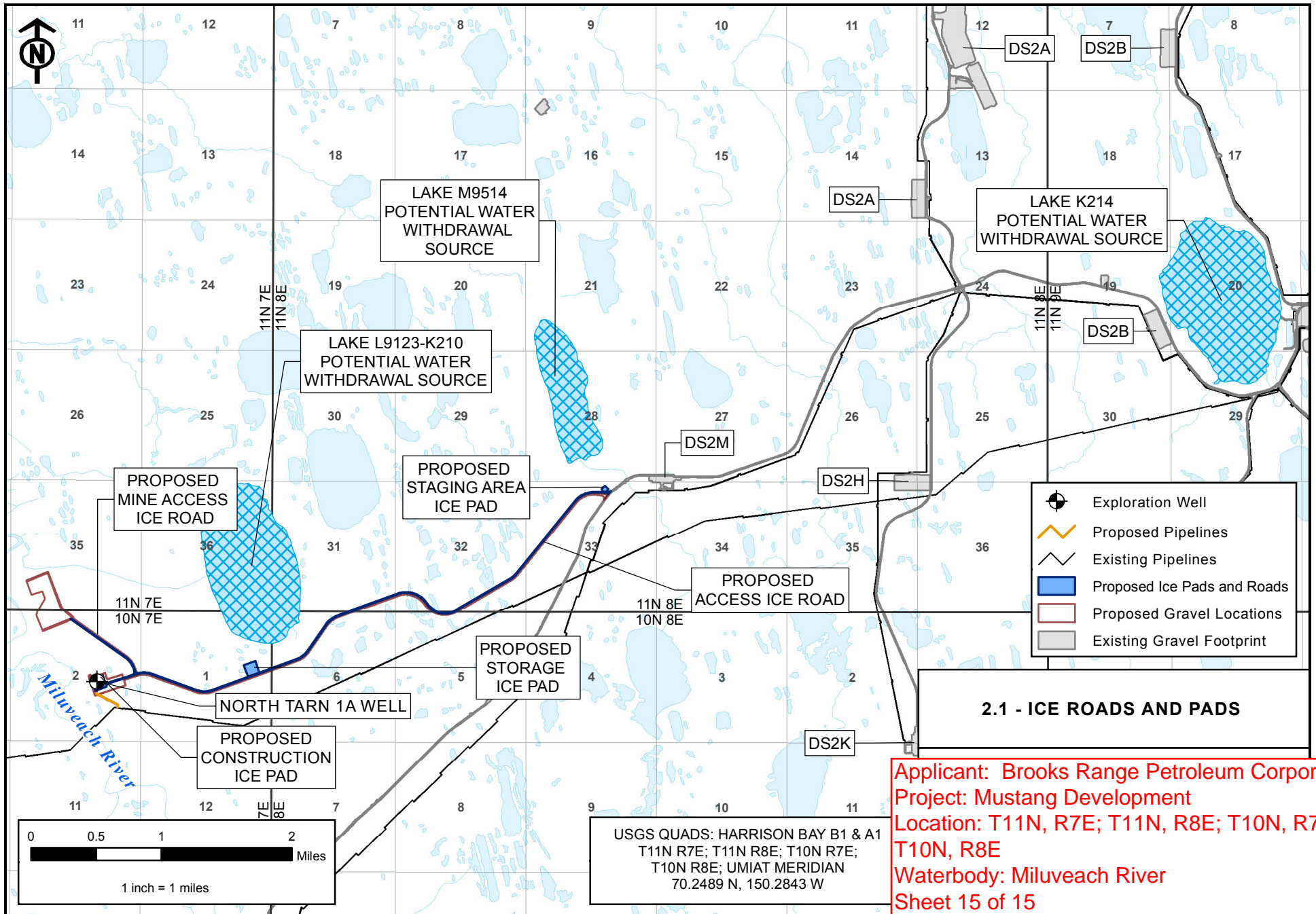
POA-2012-236



MUSTANG DEVELOPMENT

CONTINGENT PHASE REHABILATION PLAN

Applicant: BROOKS RANGE PETROLEUM CORPORATION
 Project: MUSTANG DEVELOPMENT
 Location: T11N, R7E: T11N, R8E: T10N, R7E, T10N, R8E
 Waterbody: MILUVEACH RIVER
 Sheet: 14 of 14
 Date: JUNE 2012



2.1 - ICE ROADS AND PADS

Applicant: Brooks Range Petroleum Corporation
 Project: Mustang Development
 Location: T11N, R7E; T11N, R8E; T10N, R7E;
 T10N, R8E
 Waterbody: Miluveach River
 Sheet 15 of 15
 Dated: June 2012

USGS QUADS: HARRISON BAY B1 & A1
 T11N R7E; T11N R8E; T10N R7E;
 T10N R8E; UMIAT MERIDIAN
 70.2489 N, 150.2843 W