

## **Permit Application**

**Applicant: Northern Construction & Maintenance, LLC**

**File No.: POA-2012-557, Sagavanirktok River**

**Waterway: Wetlands**

**Proposed Activity: Discharge Fill (Gravel)**

### Background

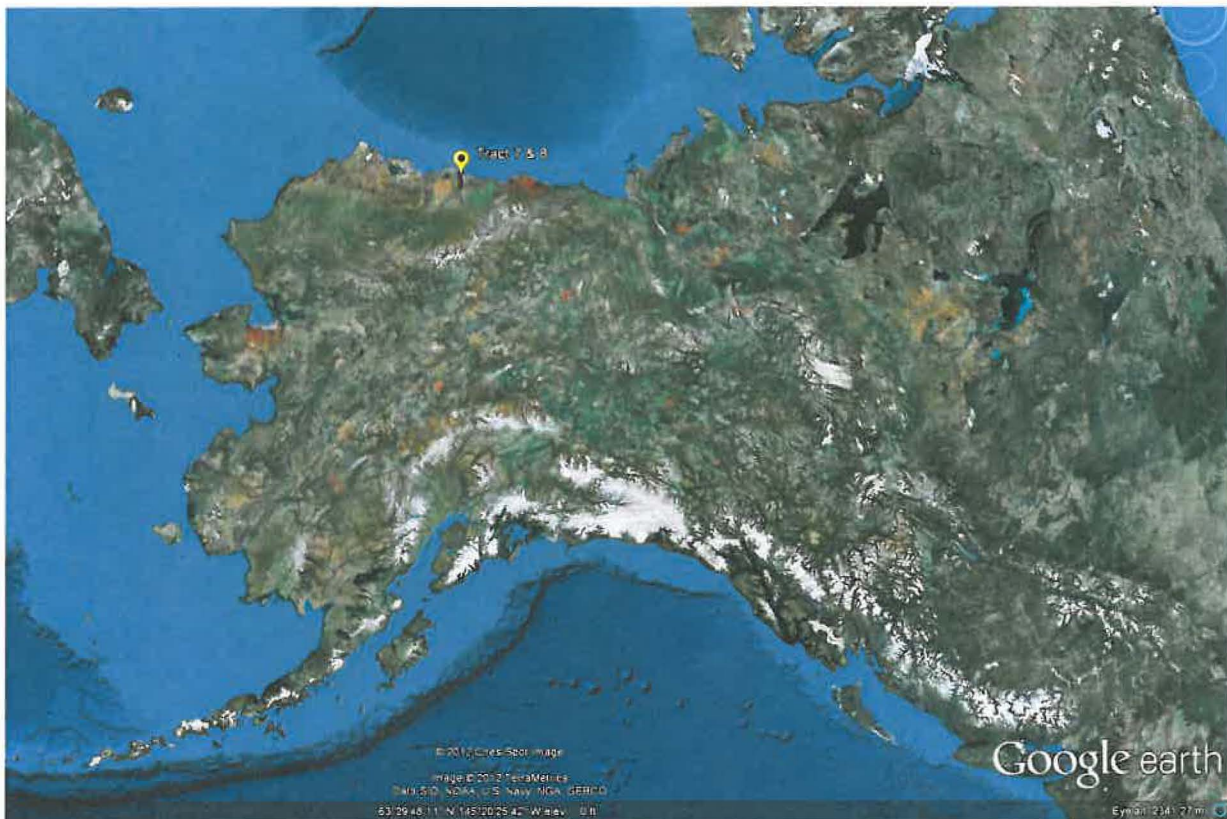
Deadhorse is an unincorporated community in the North Slope Borough, Alaska, United States, along the North Slope near the Arctic Ocean. The town consists mainly of facilities for the workers and companies that operate at the nearby Prudhoe Bay oil fields. Deadhorse is accessible via the Dalton Highway from Fairbanks, or the Deadhorse Airport. Deadhorse Alaska is considered wetlands according to the description of wetlands published by the EPA [40 CFR 230.3(t)], however, so is the majority of the North Slope of Alaska. The Deadhorse community total usable land area is less than 6 square miles (including the FAA lands associated with the Deadhorse Airport) which is situated in the North Slope Borough containing lands encompassing 89,000 square miles of Arctic territory. Lands here in Deadhorse, were originally platted by the State of Alaska and demised for public or private use as "industrial" on May 18<sup>th</sup>, 1970 pursuant to AS 38.05. In 1970, these lands were thus platted Industrial because they were found to be suitable for gravel fill discharge to support industrial activities that would not have an unacceptable adverse impact either individually or in combination with known and/or probable impacts of other activities affecting the ecosystems of concern. Northern Construction and Maintenance, LLC entered into a lease agreement for Tracts 7 and 8 in Deadhorse with the State of Alaska and the North Slope Borough in April 2012. In particular ADL Plat File No. 67-8 for Tracts 7 and 8, according to the State of Alaska was also included as Industrial Lands on May 18th 1970. Refer to 55 year lease agreement ADL No. 64458. Due to NCM's need for more pad space to accommodate material and equipment staging for upcoming oil and gas projects on the North Slope of Alaska, NCM is proposing to discharge 235,000 cubic yards of clean gravel fill onto North Slope Borough Lease Tract 6, 7 and 8, in Deadhorse Alaska in a three (3) phased approach.

Phase 1: The project timing for Phase 1 is planned as soon as NCM receives authorization from the Agencies (USACE 404 permit) expected later this fall 2012. Phase 1 involves the discharge of approximately 78,300 cubic yards of gravel onto tract 6, 7 & 8 to make approximately 9.7 acres of gravel pad. This would provide for a sufficient working pad for a laydown area for equipment, procured project material, logistics and project support activities

Phase 2: The project timing for Phase 2 is planned for 2013. Phase 2 involves the discharge of approximately 78,366 cubic yards of gravel onto tract 7 to make approximately 9.7 acres of gravel pad. This would expand the working pad to approximately 19.4 acres and provide the necessary additional working pad space for equipment, procured project material, logistics and project support activities.

Phase 3: The project timing for Phase 3 is planned for 2013 or may need to be postponed through 2014 or 2015. Phase 3 involves the discharge of approximately 78,334 cubic yards of gravel onto tract 7 to make approximately 10.6 acres of gravel pad. This would expand the working pad to approximately 30 acres and provide the necessary additional working pad space for equipment, procured project material, logistics and project support activities.

**Map 1: Location – State of Alaska, USA**



**Map 2: Location – North Slope, State of Alaska, USA**





**Map 3: Location – Deadhorse, North Slope, State of Alaska, USA: Elevation Profile: 52 Feet MSL**



Map 4: Location – Tract 7 & 8, Deadhorse, North Slope, State of Alaska, USA





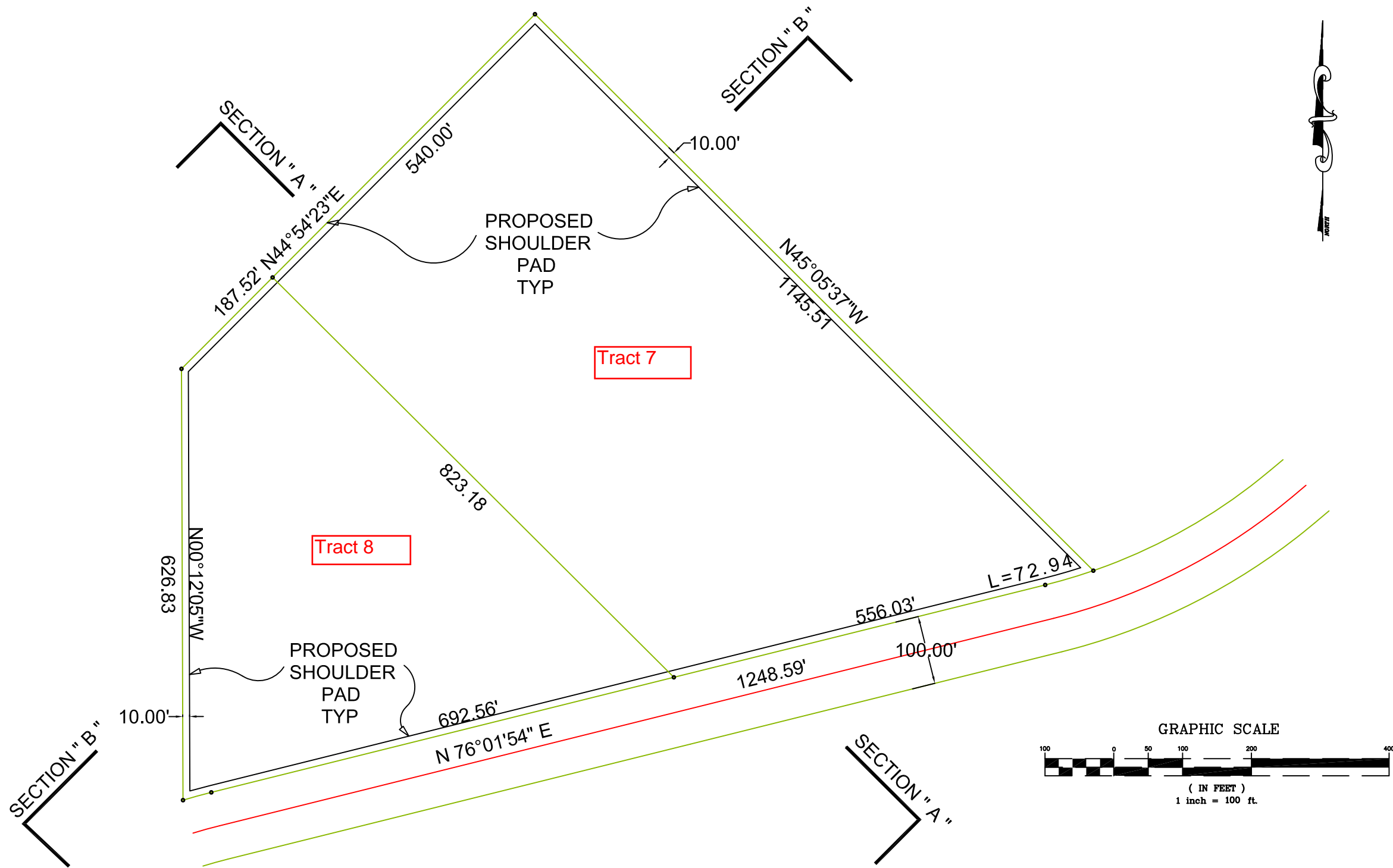
**Diagram 1. Tract 6, 7 & 8 General Area**



**Diagram 2. Close up of Tract 6, 7 & 8**



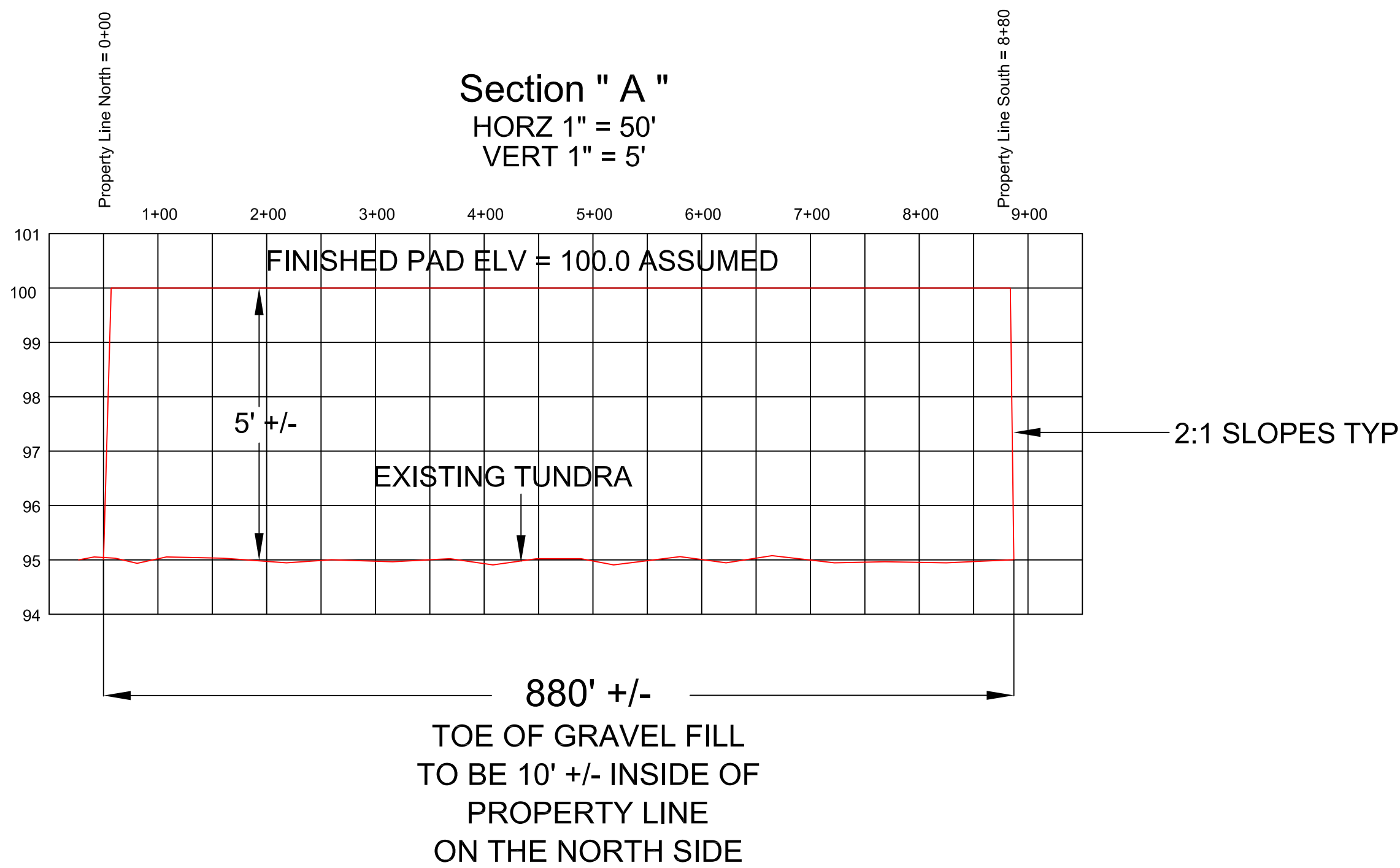
**Elevation Diagram 3.**



# GRAVEL FILL TRACTS 7 & 8

NORTHERN CONSTRUCTION  
AND  
MAINTENANCE  
  
6250 S. Airpark Place  
Anchorage, Alaska 99502  
(p): 907-562-5303  
(f): 907-562-5309

POA-2012-557, Sagavanirktok River  
Northern Construction & Maintenance  
Gravel Pad Laydown Yard Development  
Drawings dated August 1, 2012  
Sheet 6 of 8



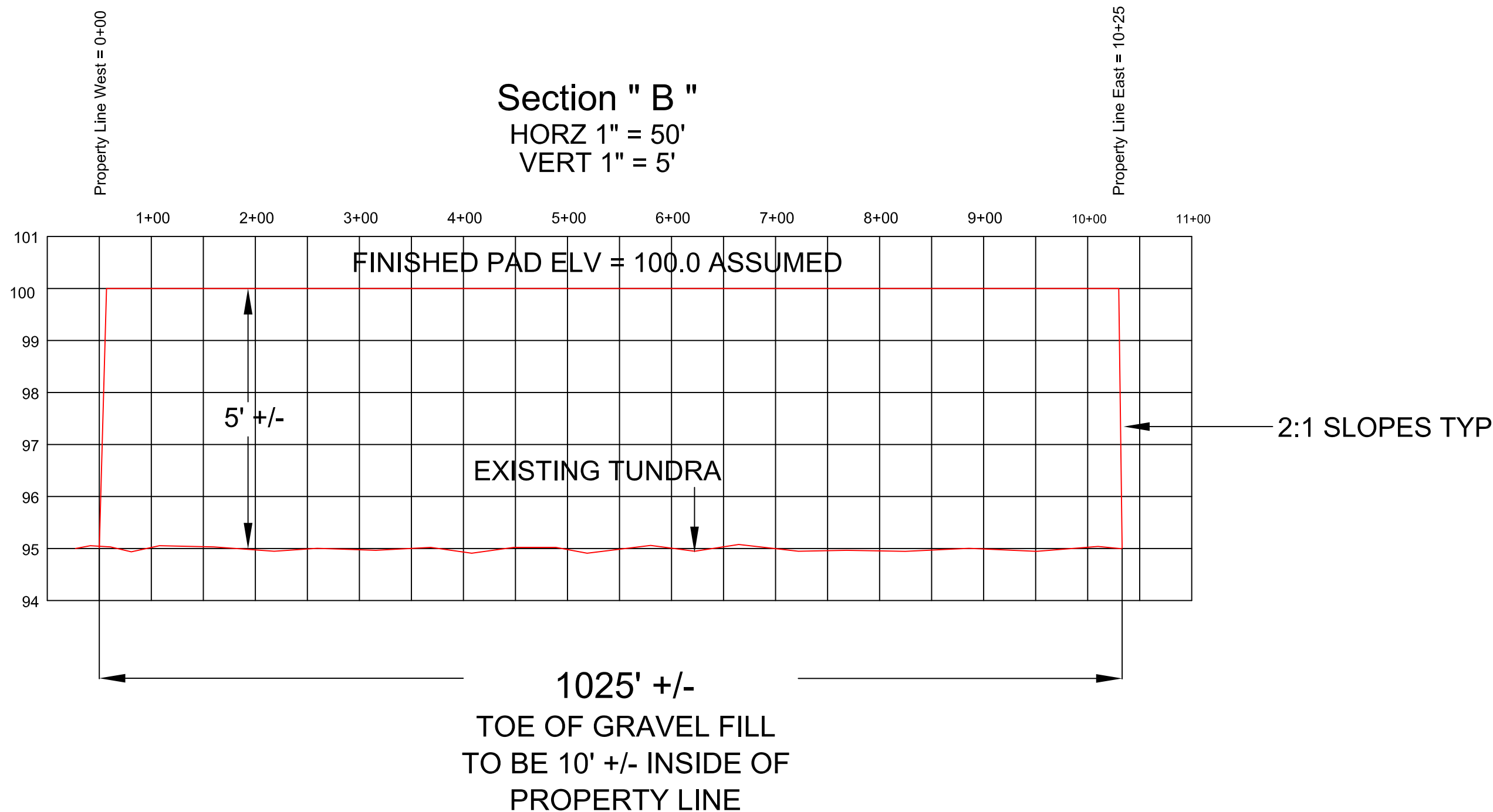
GRAVEL FILL  
TRACTS 7 & 8

NORTHERN CONSTRUCTION  
AND  
MAINTENANCE

6250 S. Airpark Place  
Anchorage, Alaska 99502  
(p): 907-562-5303  
(f): 907-562-5309

Section " A "

POA-2012-557, Sagavanirktok River  
Northern Construction & Maintenance  
Gravel Pad Laydown Yard Development  
Drawings dated August 1, 2012  
Sheet 7 of 8



GRAVEL FILL  
TRACTS 7 & 8

NORTHERN CONSTRUCTION  
AND  
MAINTENANCE

6250 S. Airpark Place  
Anchorage, Alaska 99502  
(p): 907-562-5303  
(f): 907-562-5309

POA-2012-557, Sagavanirktok River  
Northern Construction & Maintenance  
Gravel Pad Laydown Yard Development  
Drawings dated August 1, 2012  
Sheet 8 of 8