

PURPOSE:
 OPEN & CONTAINER STORAGE,
 STAGING & REPACKAGING AREA
 LOCATION: ST. PAUL ISLAND, ALASKA

DATUM:
 ADJACENT PROPERTY OWNERS:
 1. CITY OF ST. PAUL
 2. TANADGUSIK CORPORATION
 3.

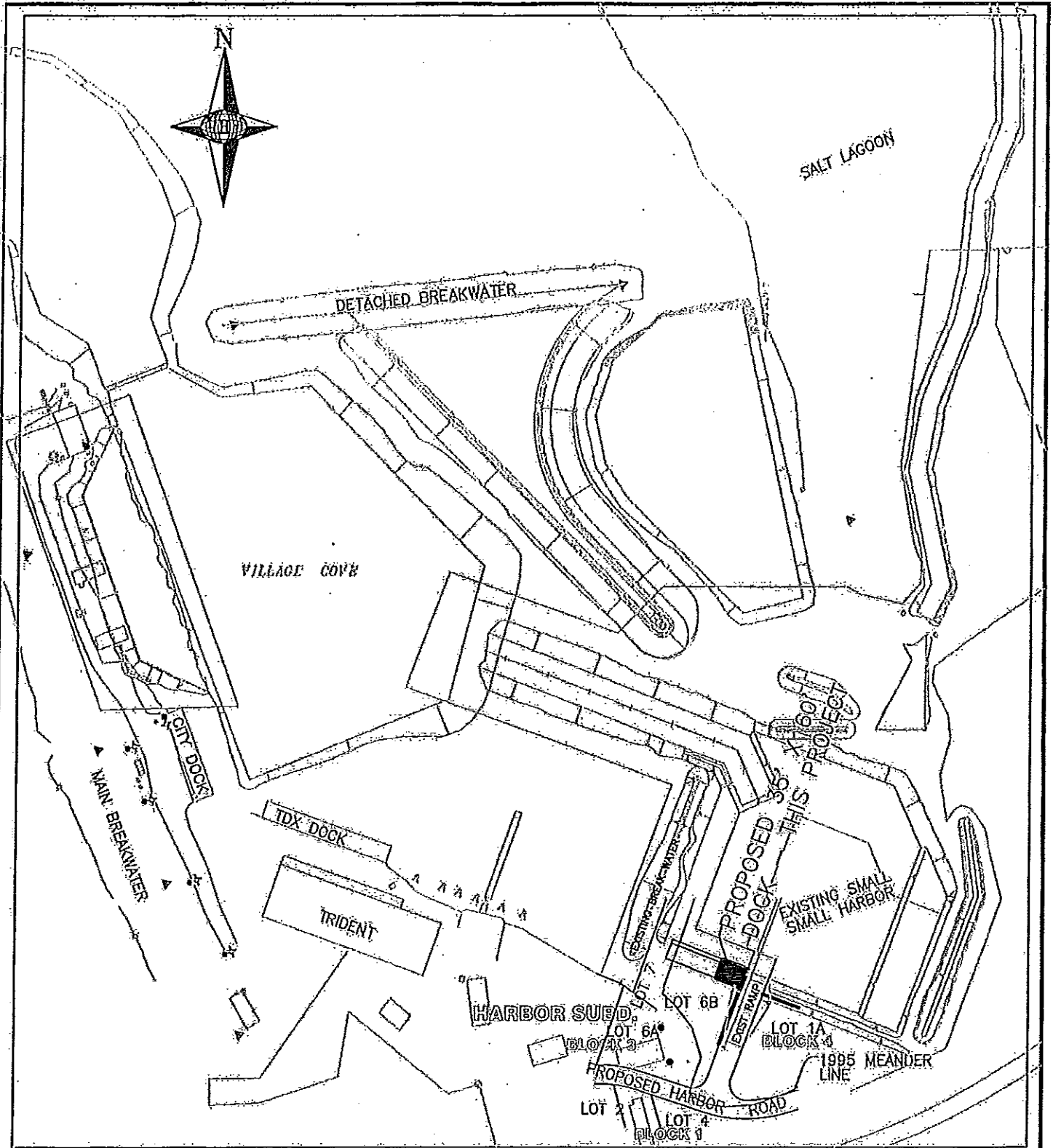
VICINITY MAP
 NOT TO SCALE
 POA-2013-191, Bering Sea

APPLICATION BY:
 ALEUT COMMUNITY OF ST. PAUL
 P.O. BOX 86
 ST. PAUL, ALASKA 99660

LOT 6B, BLOCK 3
 HARBOR SUBDIVISION (PENDING)
 2013 PUBLIC DOCK PROJECT

DRAWING PREPARED BY:
 DHI CONSULTING ENGINEERS
 800 E. DIMOND BLVD. 3-650
 ANCHORAGE, ALASKA 99515
 PHONE: (907) 344-1385
 FIGURE 1 DATE: 3/26/13

1 OF 4



PURPOSE:
 OPEN & CONTAINER STORAGE
 STAGING & REPACKAGING AREA

LOCATION: ST. PAUL ISLAND, ALASKA

DATUM:

ADJACENT PROPERTY OWNERS:
 1. CITY OF ST. PAUL
 2. TANAGSUX CORPORATION

SITE PLAN
 SCALE: 1"=300'

POA-2013-191, Bering Sea

APPLICATION BY:
 ALEUT COMMUNITY OF ST. PAUL

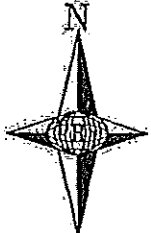
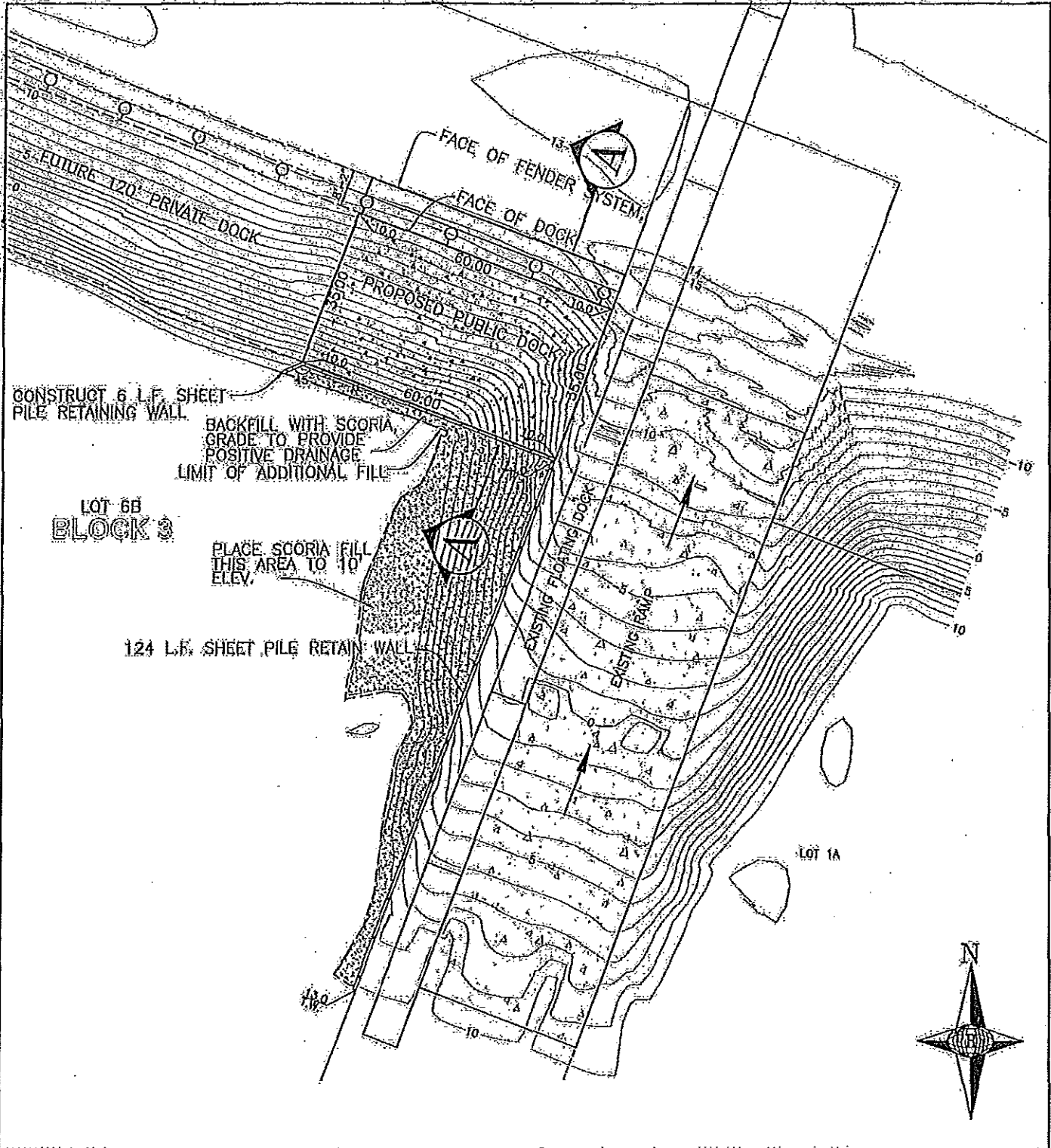
ST. PAUL, ALASKA 99660

LOT 6B, BLOCK 3
 HARBOR SUBDIVISION (PENDING)
 2013 PUBLIC DOCK PROJECT

DRAWING PREPARED BY:
 DHI CONSULTING ENGINEERS
 800 E. DIMOND BLVD, 3-550
 ANCHORAGE, ALASKA 99515
 PHONE: (907) 344-1385

FIGURE 2. DATE: 3/26/13

2
 OF
 4



PURPOSE:
 OPEN & CONTAINER STORAGE
 STAGING & REPACKAGING AREA

LOCATION: ST. PAUL ISLAND, ALASKA

DATUM:

ADJACENT PROPERTY OWNERS:
 1. CITY OF ST. PAUL
 2. TANAGUSIX CORPORATION

SITE DETAIL
 SCALE 1"=30'

POA-2013-191, Bering Sea

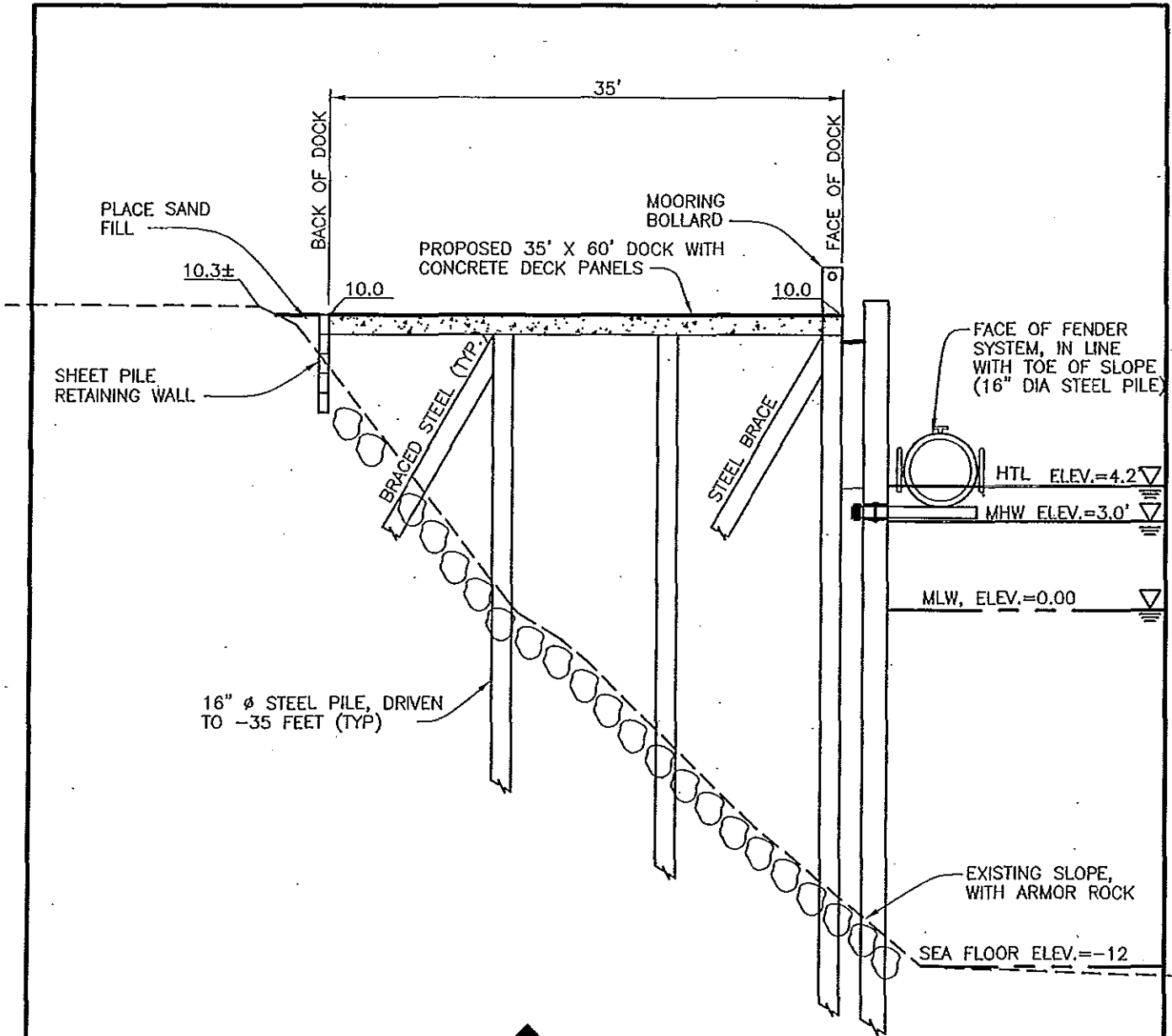
APPLICATION BY:
 ALEUT COMMUNITY OF ST. PAUL
 P.O. BOX 86
 ST. PAUL, ALASKA 99660

**LOT 6B, BLOCK 3
 HARBOR SUBDIVISION (PENDING)
 2013 PUBLIC DOCK PROJECT**

DRAWING PREPARED BY:
 DHI CONSULTING ENGINEERS
 800 E. DIMOND BLVD. 3-550
 ANCHORAGE, ALASKA 99515
 PHONE: (907) 344-1385

FIGURE 3 DATE: 3/26/13





SECTION 

POA-2013-191, Bering Sea
Sheet 4 of 4, Dated May 2013

PURPOSE:
OPEN & CONTAINER STORAGE,
STAGING & REPACKAGING AREA

LOCATION: ST. PAUL ISLAND, ALASKA

DATUM:

ADJACENT PROPERTY OWNERS:

1. CITY OF ST. PAUL
2. TANADGUSIX CORPORATION

TYPICAL SECTION
NOT TO SCALE

POA-2013-191, Bering Sea

APPLICATION BY:

ALEUT COMMUNITY OF ST. PAUL
P.O. BOX 86
ST. PAUL, ALASKA 99660

LOT 6B, BLOCK 3
HARBOR SUBDIVISION (PENDING)
2013 PUBLIC DOCK PROJECT

DRAWING PREPARED BY:
DHI CONSULTING ENGINEERS
800 E. DIMOND BLVD. 3-550
ANCHORAGE, ALASKA 99515
PHONE: (907) 344-1385

FIGURE 4 DATE: 5/1/13

4
OF
4