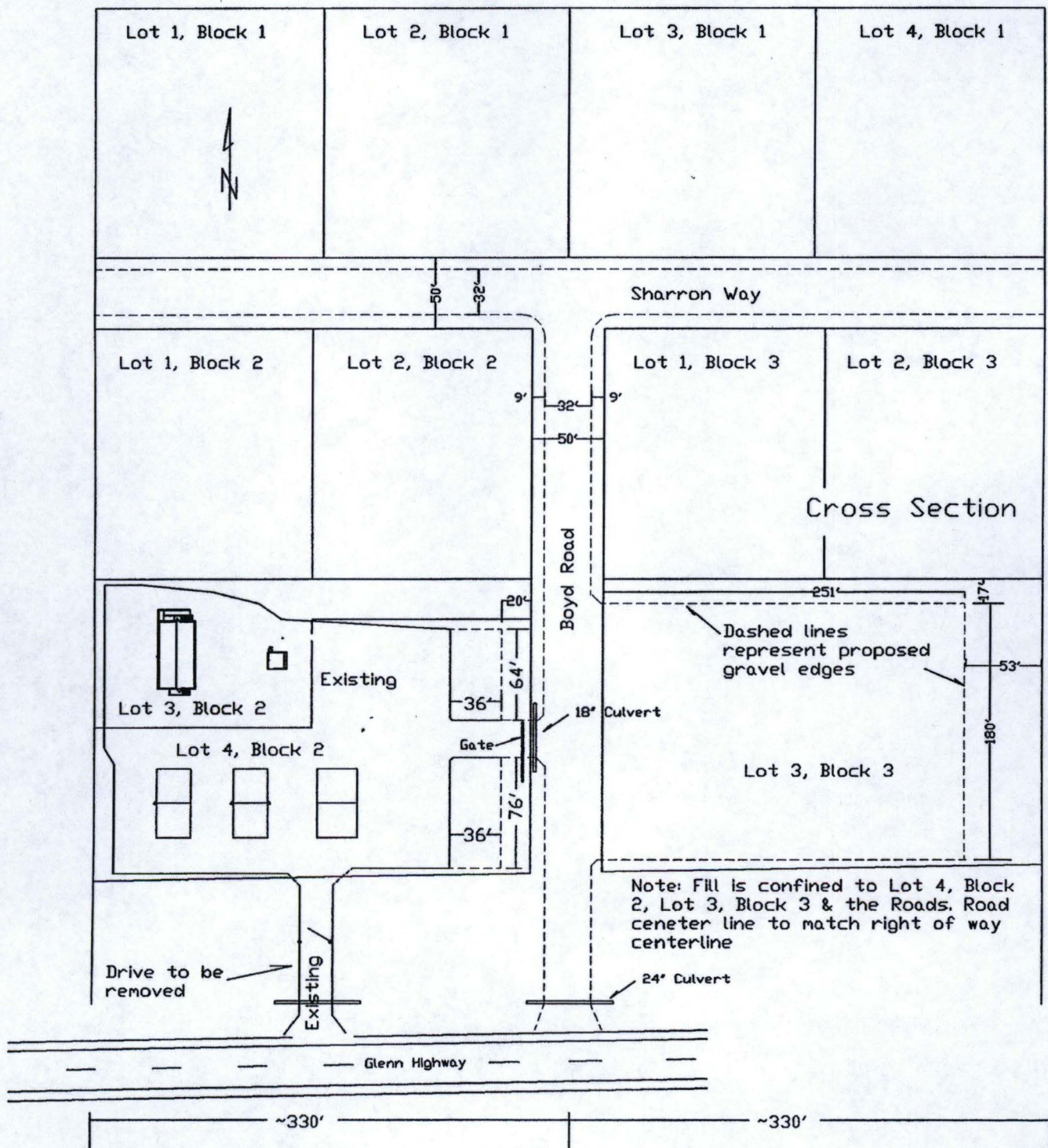


Boyd Ables  
POA-2013-264  
Moose Creek  
June 11, 2103  
Sheet 1 of 3

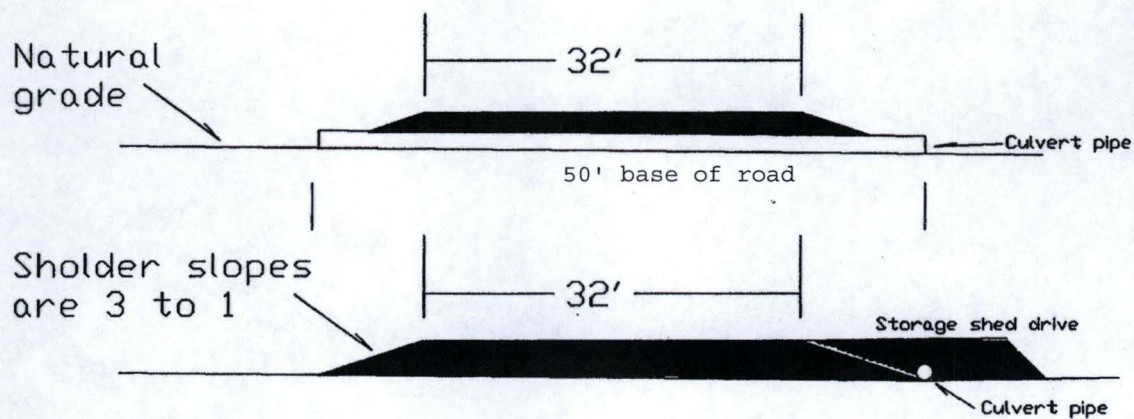


Roads & Pad - Plan  
Copper River Meridian  
Ables Subdivision, Lots 38 & 39 Sec 21 TS 4N R 2W

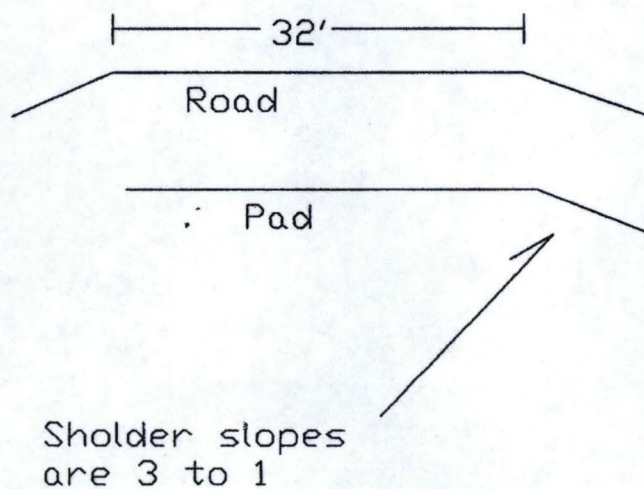




Cross Section  
Copper River Meridian  
Ables Subdivision, Lots 38 & 39 Sec 21 TS 4N R 2W



Note: natural slope is approximately 1% draining to the south east



Note: Fill is confined to Lot 4, Block 2, Lot 3, Block 3 & the Roads