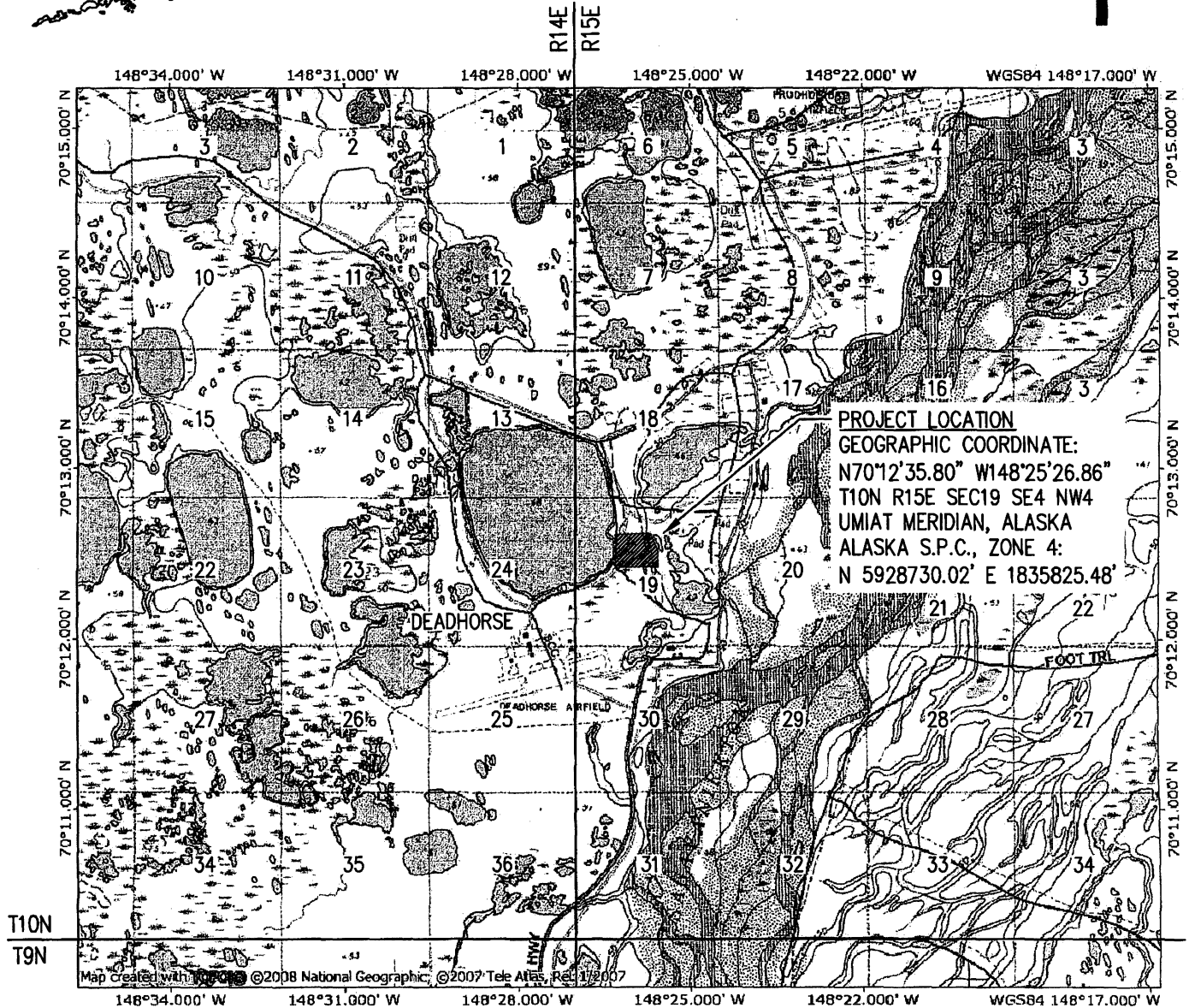
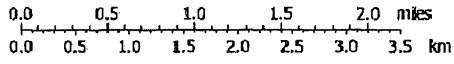


Plotted: S:\AES\ENG\13. ENG PROJ\PS\F02305. PSI PRODUCT STORAGE AND HANDLING\1. FEAS\DSGN\DWG\USAGE PERMIT PLATES ON 9/25/2013 3:01 PM BY NUMKENA, TALAWNA AARON

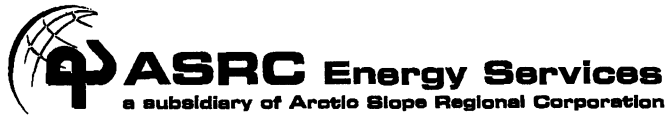


**PROJECT LOCATION**  
 GEOGRAPHIC COORDINATE:  
 N70°12'35.80" W148°25'26.86"  
 T10N R15E SEC19 SE4 NW4  
 UMIAT MERIDIAN, ALASKA  
 ALASKA S.P.C., ZONE 4:  
 N 5928730.02' E 1835825.48'




TNT / MN  
21°  
09/16/13

ADJACENT PROPERTY OWNER: STATE OF ALASKA  
 DATUM: ELEVATION = 50' BPMSL TO 75' BPMSL



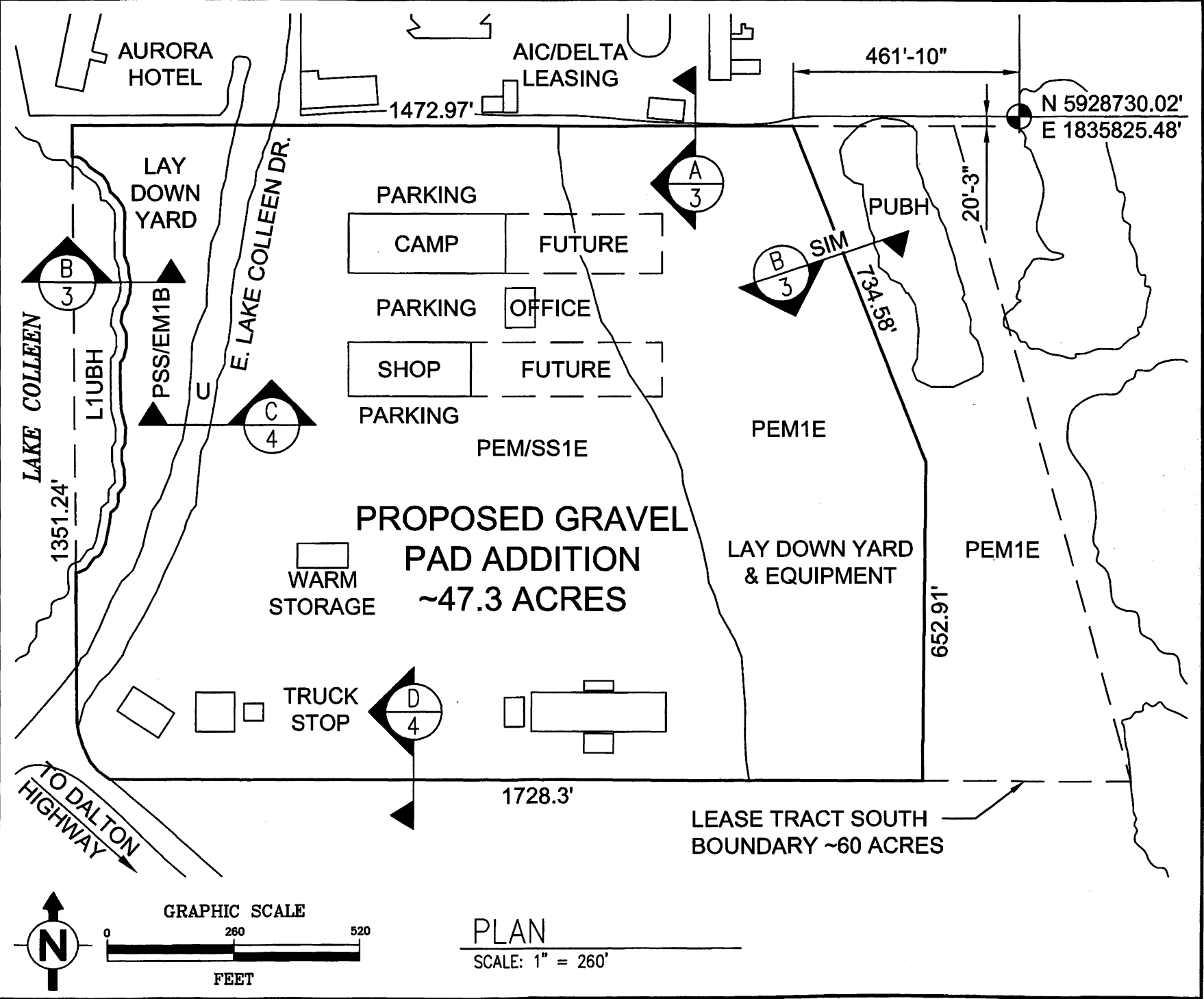
1	09-23-13	ISSUED FOR PERMIT	TAN	R2G	-	-	-
NO.	DATE		BY	CHK	ENG	LEAD	CLIENT
TITLE			USACE WETLANDS - GRAVEL ADDITION LOCATION AND VICINITY MAPS				
SUB-PROJ#	DIV.	WORK PK	DISCIPLINE#	DWG. NO.	SHEET NO.		REV.
-	-	-	CE	USACE PERMIT PLATES - 01	1		1

DRAWN	CHECK	APPRVD.	DATE	SCALE
T. NUMKENA	R. GONZALES	.	09-23-13	AS NOTED

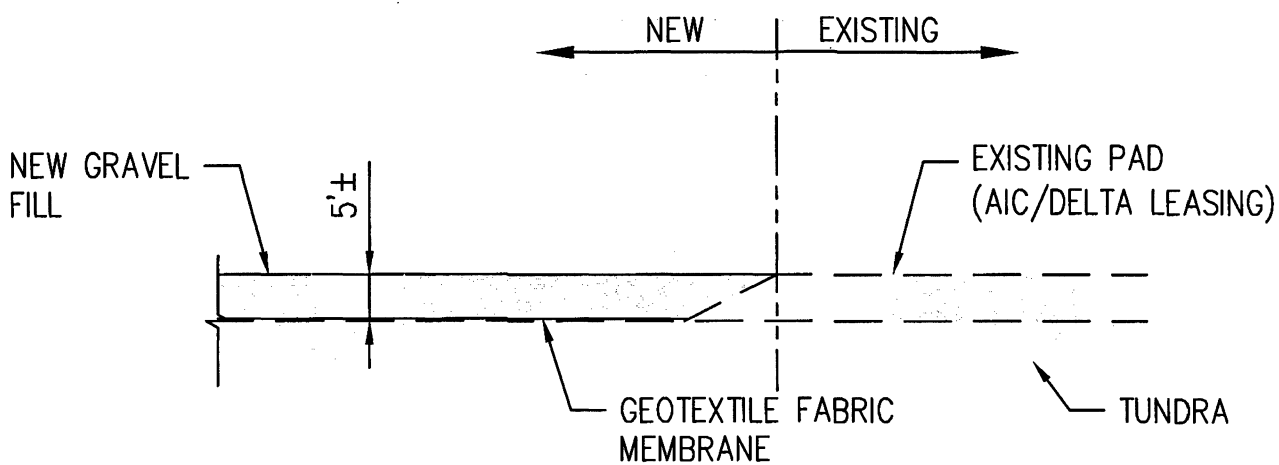


**ASRC Energy Services**  
a subsidiary of Arctic Slope Regional Corporation

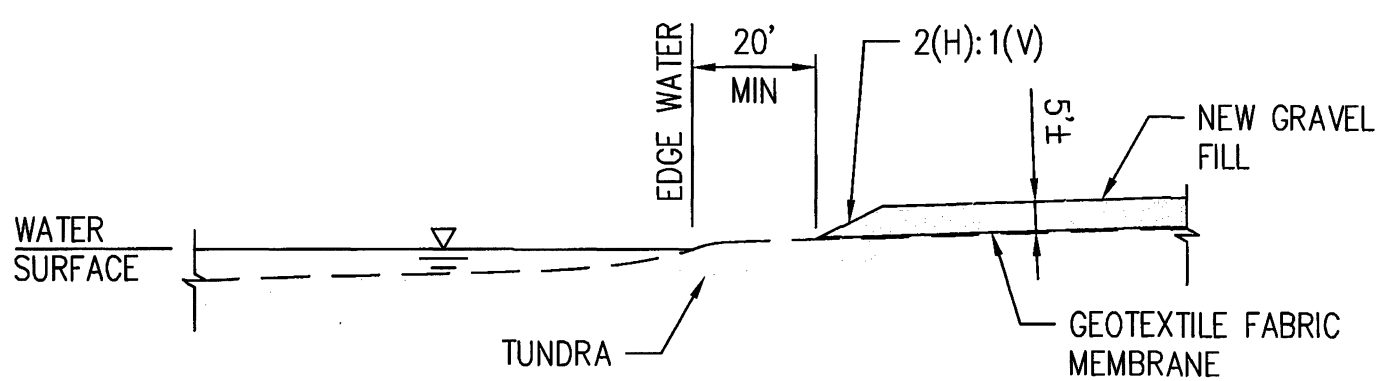
DRAWN T. NUMKENA	CHECK R. GONZALES	APPROV.	DATE 09-23-13
SUB-PROJ/ DIV. / WORK PK / DISCIPLINE / DWG. NO.		SCALE	
NO. / DATE		AS NOTED	
1 / 09-23-13		ISSUED FOR PERMIT	
BY / CHK / ENG / LEAD / CLIENT		TAN / R2G / - / - / -	
TITLE USACE WETLANDS - GRAVEL ADDITION PLAN			
SHEET NO. / REV. 02 / 1			



Plotted S:\AES ENY\13. ENG. PROJ\APS\EQ2305.PSI PRODUCT STORAGE AND HANDLING\1. FEAS\DSGN DWG\CE\USACE PERMIT PLATES ON 9/25/2013 11:07 AM BY NUMKE'NA, TALAWWA-AARON



SECTION A  
SCALE: 1" = 20'



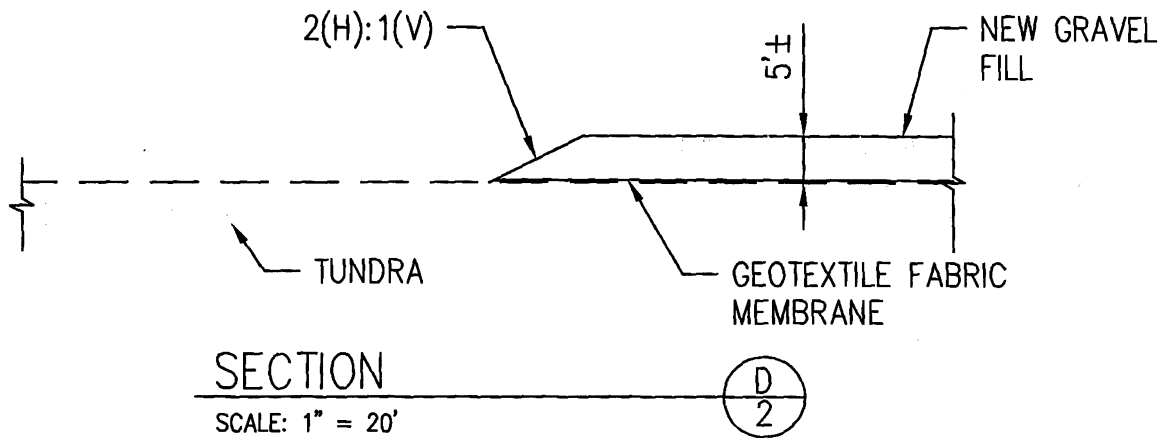
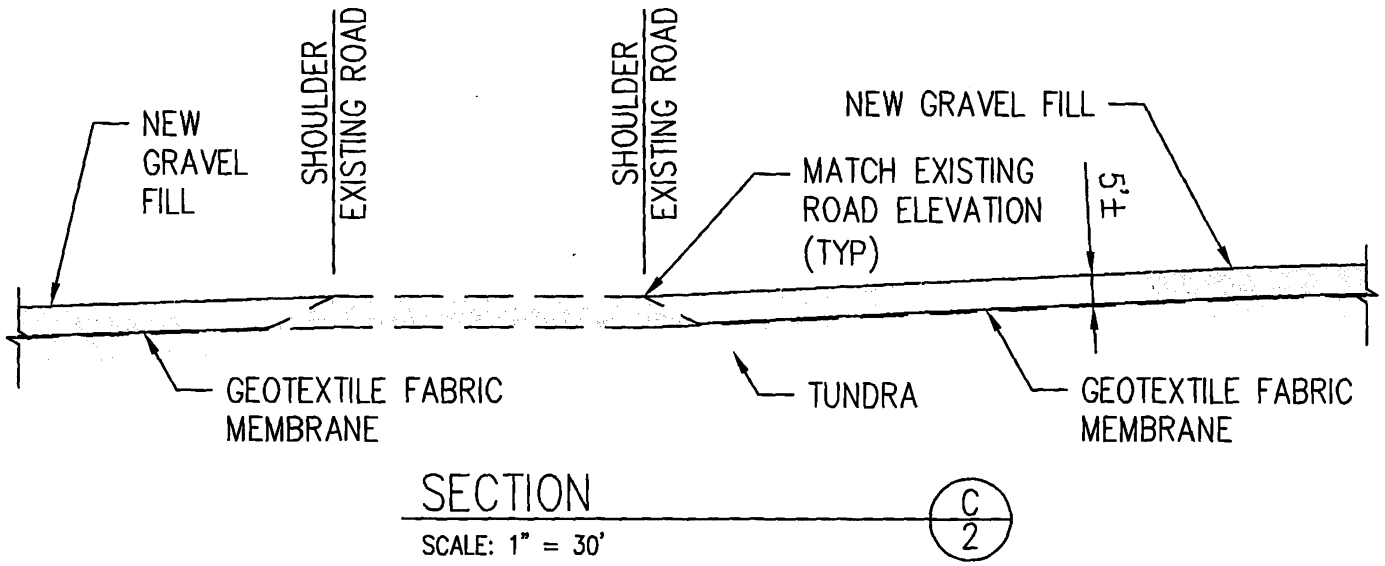
SECTION B  
SCALE: 1" = 30'



1	09-23-13	ISSUED FOR PERMIT	TAN	R2G	-	-	-				
NO.	DATE	TITLE	BY	CHK	ENG	LEAD	CLIENT				
		USACE WETLANDS - GRAVEL ADDITION SECTIONS									
DRAWN	CHECK	APPRVD.	DATE	SCALE	SUB-PROJ#	DIV.	WORK PK	DISCIPLINE#	DWG. NO.	SHEET NO.	REV.
T. NUMKE'NA	R. GONZALES	-	09-23-13	AS NOTED	--	-	-	CE	USACE PERMIT PLATES - 03	1	1

# ESTIMATED FILL QUANTITIES

	TOTAL
GRAVEL FILL (SF)	47.3 ACRES
GRAVEL FILL (CY)	419,710 CY



Plotted S:\AES\_ENG\13\_ENG\_PROJ\AES\02305\_PSI\_PRODUCT\_STORAGE\_AND\_HANDLING\1\_FEAS\DSGN\_DWG\CE\_USAGE\_PERMIT\_PLATES\_ON\_9\26\2013\_3:58 PM BY NUMKE'NA\_TALAWWA\_AARON



1	09-23-13	ISSUED FOR PERMIT	TAN	R2G	-	-	-				
NO.	DATE		BY	CHK	ENG	LEAD	CLIENT				
TITLE			USACE WETLANDS - GRAVEL ADDITION SECTIONS								
DRAWN	CHECK	APPRVD.	DATE	SCALE	SUB-PROJ#	DIV.	WORK PK	DISCIPLINE#	DWG. NO.	SHEET NO.	REV.
T. NUMKE'NA	R. GONZALES	-	09-23-13	AS NOTED	--	-	-	CE	USACE PERMIT PLATES - 04	1	1